

Injury attendances to Stepping Hill Emergency Department

January to December 2010

This report summarises recorded injury attendances to Stepping Hill Emergency Department (ED) between January and December 2010.

Between January and December 2010 there were 37,365 injury attendances to Stepping Hill ED. Males accounted for over half (55%) of all attendances. The month with the highest injury attendances was May (n=3,500) with February having the lowest attendances (n=2,523) (**Figure 1**). The majority (66%) of attendances did not have a specific injury group recorded. Of the specified injury groups, falls (12%) accounted for the highest proportion followed by sports injury (10%), road traffic collision (RTC) (6%) and assault (3%) (**Table 1**).

For all injuries, the highest proportion of attendances was for persons aged 5-19 (26%) and 20-34 (21%) years (**Figure 2**). Over half (54%) of fall attendees were aged 65 or over. Nearly half (45%) of assault attendees were aged 20-34. Almost four in ten (37%) of RTC attendees were aged 20-34 (**Figure 3**).

The majority (87%) of attendees were white. Of the remaining attendees 8% were recorded as not stated whilst 3% were recorded as not known (**Table 2**).

The disposal of a patient can give an indication of the severity of the injuries sustained. Six in ten (60%) of attendees were discharged, a quarter (25%) were referred, and 11% were admitted (**Table 3**). Over

three-quarters (79%) of RTC attendees were discharged whilst nearly four in ten (38%) fall attendees were admitted (**Table 4**).

Table 5 shows the arrival methods of attendees at Stepping Hill ED. Nearly three-quarters (73%) arrived by car and 18% by ambulance.

Table 6 and **Table 7** shows the day of the week and time of day which injury attendees arrived at the hospital. The day with the highest attendances was Monday (16%) whilst 10.00am to 11.59am accounted for the highest proportion (14%) of attendees.

Table 8 presents data for assault attendees to Stepping Hill ED. The majority of attendees were male (72%) and nearly half (45%) were aged 20-34 years; 36% arrived by ambulance. One in six (17%) of assaults were recorded as occurring in a public place and over a third (34%) at the weekend between the hours of 8pm and 4am.

Figure 4 (a-d) shows crude rates of attendance at Stepping Hill ED by attendee's area of residence, in this case Middle Super Output Area (MSOA). The MSOAs with the highest crude rates are indicated beneath each figure.¹

¹ Population figures are drawn from mid-2008 population estimates from the Office for National Statistics.

Figure 1: Stepping Hill ED: Total injury attendances by gender and month, January to December 2010

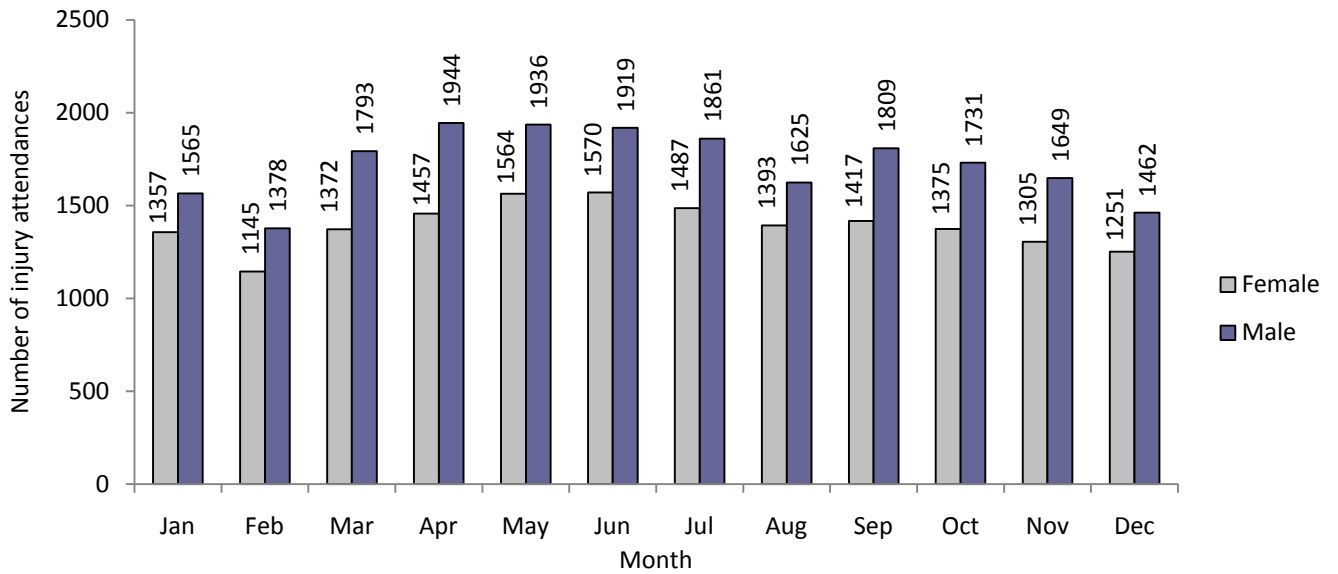


Table 1: Stepping Hill ED: Total injury attendances by injury group and month, January to December 2010

	Jan	Feb	Mar	Apr	May	Jun	Jul	Aug	Sep	Oct	Nov	Dec	Total	%
Other injury	2025	1640	2017	2215	2337	2406	2220	1972	2137	1972	1875	1838	24654	66
Falls	402	293	388	406	449	373	362	361	314	326	355	409	4438	12
Sports injury	163	259	397	406	350	303	324	252	356	325	333	109	3577	10
RTC	164	194	199	188	177	166	194	167	209	254	249	189	2350	6
Assault	98	86	85	110	91	115	107	124	96	133	85	88	1218	3
Bites & stings	34	26	40	42	57	82	96	94	64	47	21	36	639	2
Burns & scalds	36	25	39	34	39	44	45	48	50	49	36	44	489	1
Total	2922	2523	3165	3401	3500	3489	3348	3018	3226	3106	2954	2713	37365	100

Figure 2: Stepping Hill ED: Total injury attendances by age group and month, January to December 2010

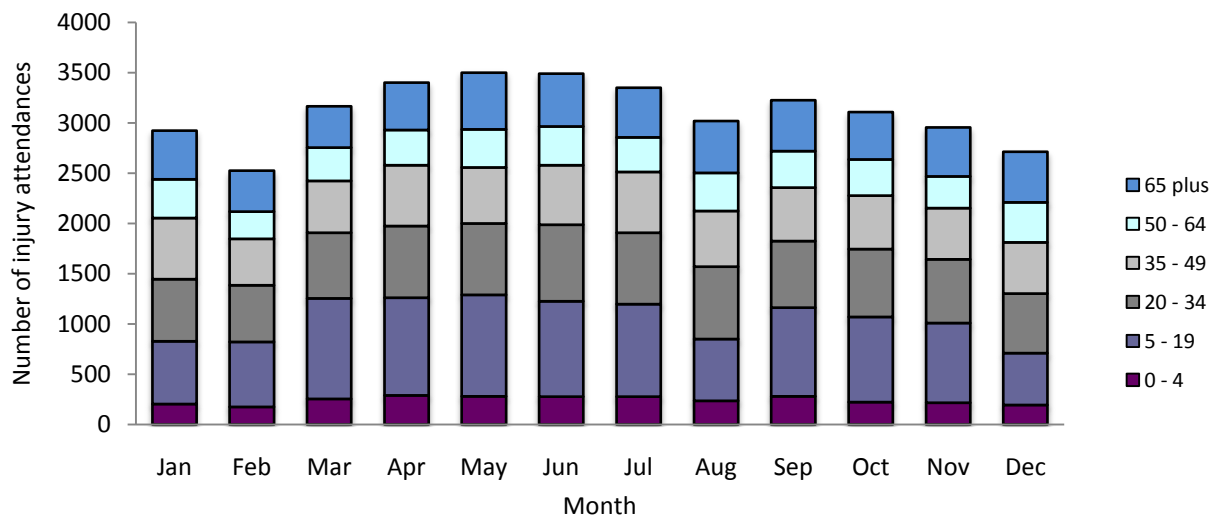


Figure 3: Stepping Hill ED: Total injury attendances by age group and injury group (excluding other injury), January to December 2010

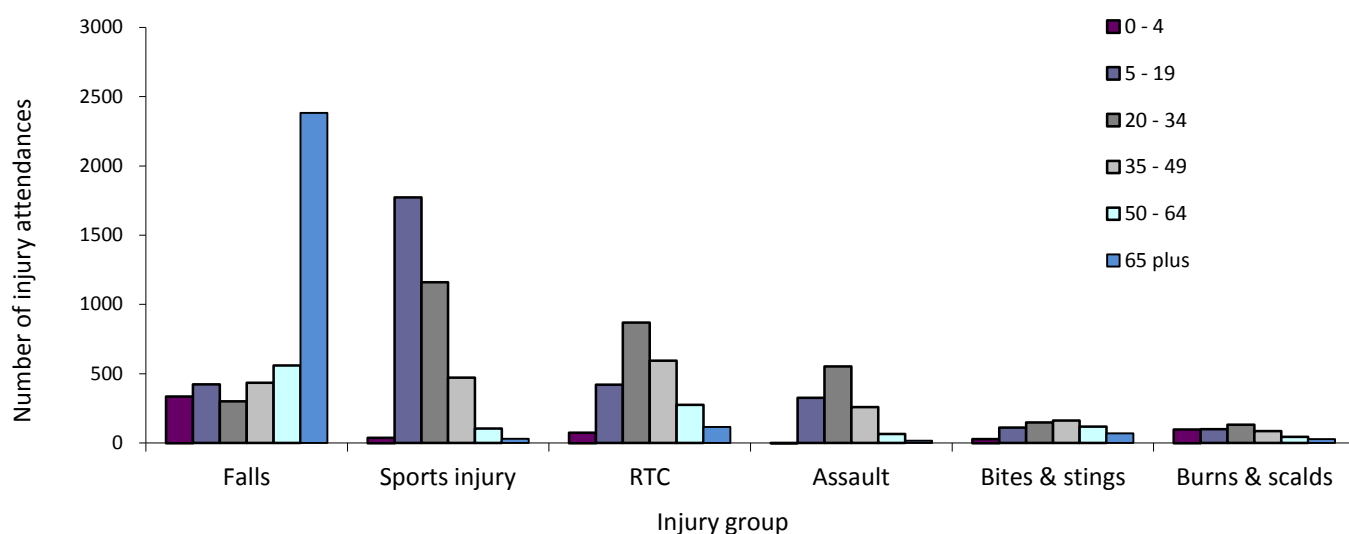


Table 2: Stepping Hill ED: Total injury attendances by ethnicity and month, January to December 2010²

Ethnicity	Jan	Feb	Mar	Apr	May	Jun	Jul	Aug	Sep	Oct	Nov	Dec	Total	%*
White	2580	2214	2688	2892	3008	3033	2906	2564	2822	2722	2582	2341	32352	87
Not stated	234	187	291	281	272	287	287	270	239	237	218	235	3038	8
Not known	61	80	125	155	147	92	96	117	110	88	102	84	1257	3
Mixed	11	12	15	16	14	19	14	18	12	8	9	9	157	0
Pakistani	6	10	12	14	17	20	12	15	5	20	10	11	152	0
Indian	***	***	10	13	10	***	10	11	14	7	6	11	100	0
Any other	10	***	6	***	8	9	7	10	7	8	6	9	90	0
Black	9	***	8	7	7	11	5	***	8	***	9	6	81	0
Asian other	7	***	***	8	7	9	***	7	***	***	***	6	65	0
Chinese	***	***	***	***	***	***	***	***	5	7	***	***	37	0
Bangladeshi	***	***	***	5	8	***	***	***	***	***	5	***	36	0
Total	2922	2523	3165	3401	3500	3489	3348	3018	3226	3106	2954	2713	37365	100

*Percentages may not add up to 100 due to rounding

Table 3: Stepping Hill ED: Total injury attendances by method of disposal and month, January to December 2010

Disposal	Jan	Feb	Mar	Apr	May	Jun	Jul	Aug	Sep	Oct	Nov	Dec	Total	%
Discharged	1671	1565	1969	2038	2058	2034	1997	1821	1902	1853	1726	1622	22256	60
Referral	765	609	797	857	970	950	879	721	804	770	741	625	9488	25
Admitted	418	309	290	355	343	367	341	313	318	285	343	359	4041	11
Other	68	40	109	151	129	138	131	163	202	198	144	107	1580	4
Total	2922	2523	3165	3401	3500	3489	3348	3018	3226	3106	2954	2713	37365	100

² Please note that all numbers less than five have been suppressed in line with patient confidentiality and if there is only one number <5 in a category then two numbers will be suppressed at the next level.

Table 4: Stepping Hill ED: Total injury attendances by method of disposal and injury group, January to December 2010*

Disposal	Assault		Bites		Burns		Falls		Other injury		RTC		Sports injury		Total	
	n	%	n	%	n	%	n	%	n	%	n	%	n	%	n	%
Discharged	644	53	443	69	152	31	1797	40	15157	61	1849	79	2214	62	22256	60
Referral	258	21	120	19	286	58	831	19	6617	27	241	10	1135	32	9488	25
Admitted	129	11	32	5	26	5	1682	38	1928	8	138	6	106	3	4041	11
Other	187	15	44	7	25	5	128	3	952	4	122	5	122	3	1580	4
Total	1218	100	639	100	489	100	4438	100	24654	100	2350	100	3577	100	37365	100

*Percentages may not add up to 100 due to rounding

Table 5: Stepping Hill ED: Total injury attendances by mode of arrival and month, January to December 2010

Arrival mode	Jan	Feb	Mar	Apr	May	Jun	Jul	Aug	Sep	Oct	Nov	Dec	Total	%
Car	2061	1859	2334	2520	2590	2586	2520	2155	2404	2257	2086	1848	27220	73
Ambulance	565	449	483	553	585	575	538	551	523	567	589	567	6545	18
Bus	105	71	110	113	129	112	106	104	117	94	97	92	1250	3
Taxi	100	61	68	96	84	85	86	85	76	82	79	94	996	3
Walked	69	63	69	88	72	89	66	72	76	74	80	79	897	2
Other	***	***	91	21	30	31	20	34	19	22	16	17	313	1
Police vehicle	16	11	9	9	10	7	***	14	8	7	***	12	111	0
Public transport	***	***	***	***	***	***	***	***	***	***	***	***	17	0
Bicycle	***	***	***	***	***	***	***	***	***	***	***	***	***	0
Helicopter	***	***	***	***	***	***	***	***	***	***	***	***	***	0
Total	2922	2523	3165	3401	3500	3489	3348	3018	3226	3106	2954	2713	37365	100

Table 6: Stepping Hill ED: Total injury attendances by day and injury group, January to December 2010*

Day	Assault		Bites & stings		Burns & scalds		Falls		Other injury		RTC		Sports injury		Total	
	n	%	n	%	n	%	n	%	n	%	n	%	n	%	n	%
Mon	158	13	103	16	77	16	690	16	3933	16	349	15	590	16	5900	16
Tue	108	9	79	12	61	12	533	12	3896	16	413	18	457	13	5547	15
Wed	108	9	83	13	67	14	537	12	3745	15	324	14	470	13	5334	14
Thu	116	10	82	13	71	15	589	13	3439	14	355	15	460	13	5112	14
Fri	159	13	84	13	61	12	729	16	3251	13	357	15	323	9	4964	13
Sat	296	24	101	16	77	16	720	16	2940	12	280	12	526	15	4940	13
Sun	273	22	107	17	75	15	640	14	3450	14	272	12	751	21	5568	15
Total	1218	100	639	100	489	100	4438	100	24654	100	2350	100	3577	100	37365	100

*Percentages may not add up to 100 due to rounding

Table 7: Stepping Hill ED: Total injury attendances by time and injury group, January to December 2010*

Time	Assault		Bites & stings		Burns & scalds		Falls		Other injury		RTC		Sports injury		Total	
	n	%	n	%	n	%	n	%	n	%	n	%	n	%	n	%
0-1.59	177	15	20	3	19	4	211	5	513	2	41	2	35	1	1016	3
2-3.59	146	12	5	1	8	2	148	3	371	2	30	1	8	0	716	2
4-5.59	80	7	15	2	***	***	121	3	246	1	22	1	***	***	503	1
6-7.59	27	2	8	1	***	***	140	3	425	2	27	1	***	***	704	2
8-9.59	53	4	46	7	34	7	463	10	2233	9	191	8	379	11	3399	9
10-11.59	103	8	76	12	61	12	666	15	3634	15	284	12	476	13	5300	14
12-13.59	100	8	87	14	64	13	581	13	3446	14	328	14	434	12	5040	13
14-15.59	99	8	70	11	66	13	502	11	3576	15	345	15	449	13	5107	14
16-17.59	101	8	89	14	64	13	476	11	3425	14	347	15	475	13	4977	13
18-19.59	97	8	85	13	68	14	438	10	3412	14	362	15	540	15	5002	13
20-21.59	109	9	90	14	65	13	377	8	2281	9	256	11	472	13	3650	10
22-23.59	126	10	48	8	31	6	315	7	1092	4	117	5	222	6	1951	5
Total	1218	100	639	100	489	100	4438	100	24654	100	2350	100	3577	100	37365	100

*Percentages may not add up to 100 due to rounding

Table 8: Total assault attendances by gender, mode of arrival, location of incident, age group and day/time of attendance, January to December 2010

	Assault attendees (n=1,218)		All injury attendees (n=37,365)
Gender*	n	%	%
Male	881	72	55
Female	337	28	45
Mode of arrival	n	%	%
Ambulance	536	36	18
Other	682	64	82
Location	n	%	%
Other	873	72	32
Public place	205	17	18
Home	98	8	38
Work	26	2	7
Educational establishment	16	1	5
Age group*	n	%	%
0 - 4	***	***	8
5 - 19	390	27	26
20 - 34	817	45	21
35 - 49	435	21	18
50 - 64	132	5	11
65 plus	***	***	16
Day and time of attendance	n	%	%
Weekends**	417	34	14
Weekend day	247	20	19
Weekdays	554	45	68

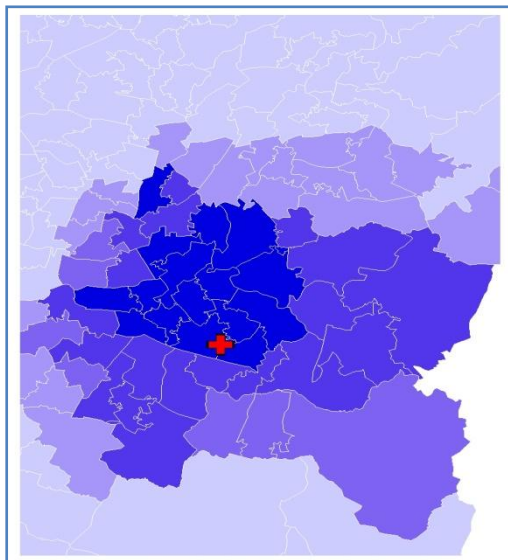
*Age was not recorded in two assault cases.

**8pm to 4am, Friday night/Saturday morning; Saturday night/Sunday morning; Sunday night/Monday morning.

Figure 4a,b,c,d: Middle Super Output Area of residence for injury attendances to Stepping Hill ED. Quintiles of crude rates per 1,000 population, January to December 2010

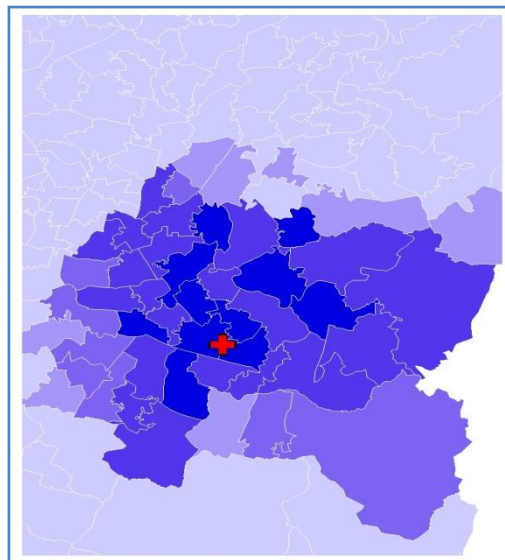
a) All injury attendances: quintiles of crude rates per 1,000 population b) Fall: quintiles of crude rates per 1,000 population

✚ Stepping Hill ED



1	1 (0.00 – 6.28)	
2	2 (6.29 – 30.83)	MSOA E02001212 (183.61)
3	3 (30.84 – 75.97)	MSOA E02001210 (170.98)
4	4 (75.98 – 119.32)	MSOA E02001190 (170.88)
5	5 (119.33 – 183.61)	MSOA E02001217 (166.13)

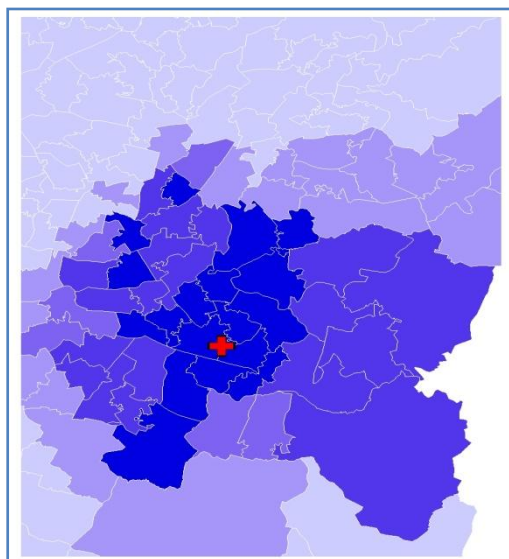
✚ Stepping Hill ED



1	1 (0.00 – 1.18)	MSOA E02001200 (22.39)
2	2 (1.19 – 4.58)	MSOA E02001206 (20.88)
3	3 (4.59 – 10.16)	MSOA E02001198 (19.74)
4	4 (10.17 – 15.65)	MSOA E02001217 (19.63)
5	5 (15.66 – 22.39)	

c) Sports injury: quintiles of crude rates per 1,000 population

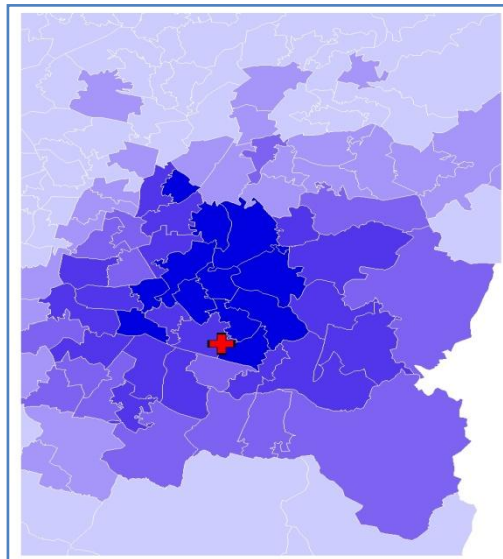
✚ Stepping Hill ED



1	1 (0.00 – 0.64)	MSOA E02001187 (14.54)
2	2 (0.65 – 2.49)	MSOA E02001228 (14.34)
3	3 (2.50 – 6.88)	MSOA E02001205 (13.61)
4	4 (6.89 – 11.02)	MSOA E02001212 (13.37)
5	5 (11.03 – 14.54)	

d) RTC: quintiles of crude rates per 1,000 population

✚ Stepping Hill ED



1	1 (0.00 – 0.39)	MSOA E02001212 (12.59)
2	2 (0.40 – 1.67)	MSOA E02001200 (10.70)
3	3 (1.68 – 4.24)	MSOA E02001205 (10.34)
4	4 (4.25 – 7.78)	MSOA E02001210 (10.13)
5	5 (7.79 – 12.59)	