

Injury attendances to Stepping Hill Emergency Department

July 2010 to June 2011

This report summarises recorded injury attendances to Stepping Hill Emergency Department (ED) between July 2010 and June 2011.

Between July 2010 and June 2011 there were 37,669 injury attendances to Stepping Hill ED. Males accounted for over half (55%) of all attendances. The month with the highest injury attendances was April (n=3,553) with December having the lowest attendances (n=2,713) (**Figure 1**). The majority (66%) of attendances did not have a specific injury group recorded. Of the specified injury groups, falls (11%) accounted for the highest proportion followed by sports injury (10%), road traffic collision (RTC) (6%) and assault (3%) (**Table 1**).

For all injuries, the highest proportion of attendances were for persons aged 5-19 (26%) and 20-34 (22%) years (**Figure 2**). Over half (55%) of fall attendees were aged 65 or over. Nearly half (45%) of assault attendees were aged 20-34. Almost four in ten (38%) of RTC attendees were aged 20-34 (**Figure 3**).

The majority (85%) of attendees were white. Of the remaining attendees 8% were recorded as not stated whilst 6% were recorded as not known (**Table 2**).

The disposal of a patient can give an indication of the severity of the injuries sustained. Six in ten (60%) of attendees were discharged, a quarter (25%) were referred, and 10% were admitted (**Table 3**). Nearly

four-fifths (78%) of RTC attendees were discharged whilst nearly four in ten (38%) fall attendees were admitted (**Table 4**).

Table 5 shows the arrival methods of attendees at Stepping Hill ED. Nearly three-quarters (73%) arrived by car and 18% by ambulance.

Table 6 presents data for assault attendees to Stepping Hill ED. The majority of assault attendees were male (71%) and 44% arrived by ambulance. Nearly three in ten (29%) of assault attendees presented at the ED between the hours of 8pm and 3.59am at weekends.

Figure 4 (a-d) shows crude rates of attendance at Stepping Hill ED by attendee's area of residence, in this case Middle Super Output Area (MSOA). The MSOAs with the highest crude rates are indicated beneath each figure.¹

¹ Population figures are drawn from mid-2008 population estimates from the Office for National Statistics.

Figure 1: Stepping Hill ED: Total injury attendances by gender and month, July 2010 to June 2011

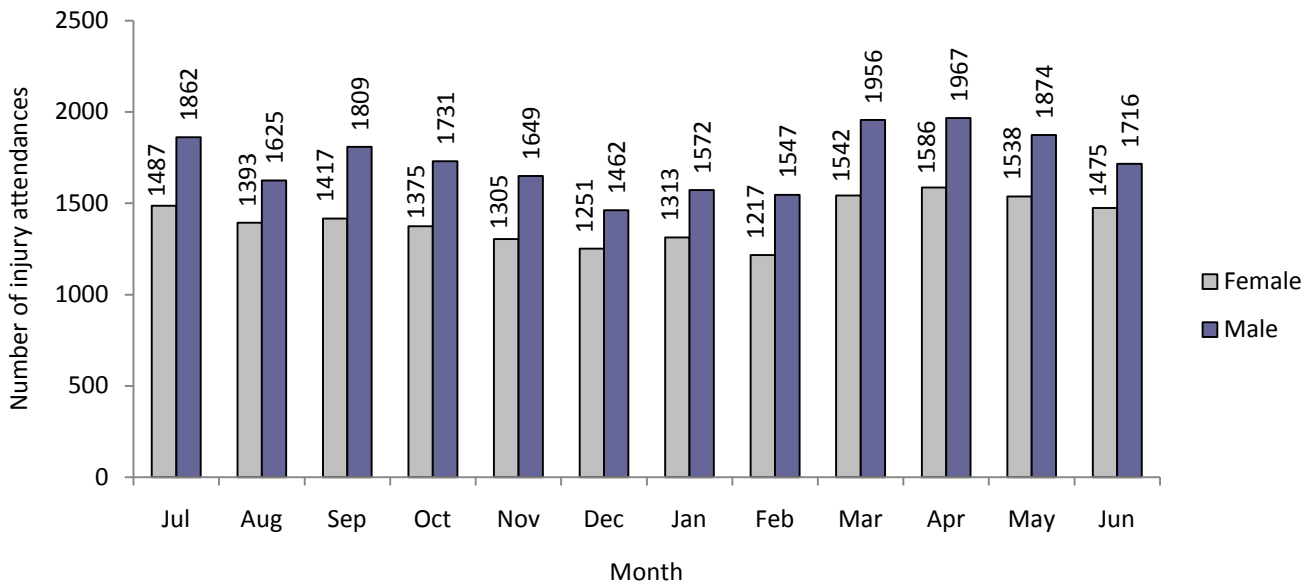


Table 1: Stepping Hill ED: Total injury attendances by injury group and month, July 2010 to June 2011*

Injury group	Jul	Aug	Sep	Oct	Nov	Dec	Jan	Feb	Mar	Apr	May	Jun	Total	%
Other injury	2220	1972	2137	1972	1875	1838	1899	1811	2366	2394	2203	2081	24768	66
Falls	362	361	314	326	355	409	329	309	310	345	392	366	4178	11
Sports injury	325	252	356	325	333	109	301	298	458	436	393	292	3878	10
RTC	194	167	209	254	249	189	163	158	156	161	224	199	2323	6
Assault	107	124	96	133	85	88	102	106	130	116	105	97	1289	3
Bites and stings	96	94	64	47	21	36	41	39	43	56	51	87	675	2
Burns and scalds	45	48	50	49	36	44	50	43	35	45	44	69	558	1
Total	3349	3018	3226	3106	2954	2713	2885	2764	3498	3553	3412	3191	37669	100

*Percentages may not add to 100 due to rounding.

Figure 2: Stepping Hill ED: Total injury attendances by age group and month, July 2010 to June 2011

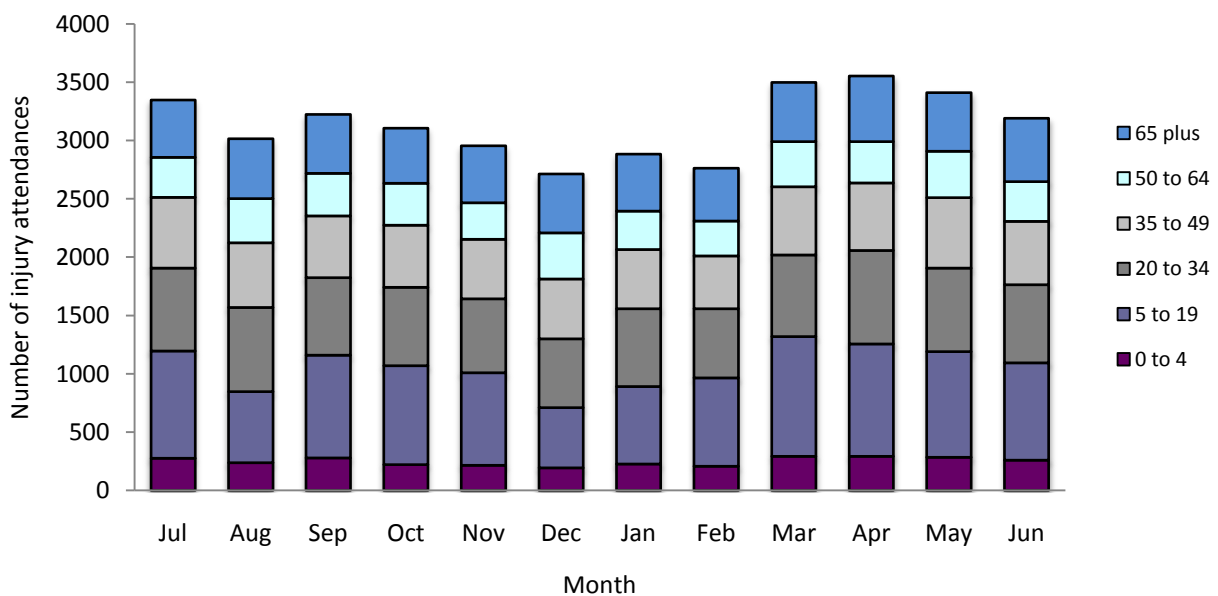


Figure 3: Stepping Hill ED: Total injury attendances by age group and injury group, July 2010 to June 2011

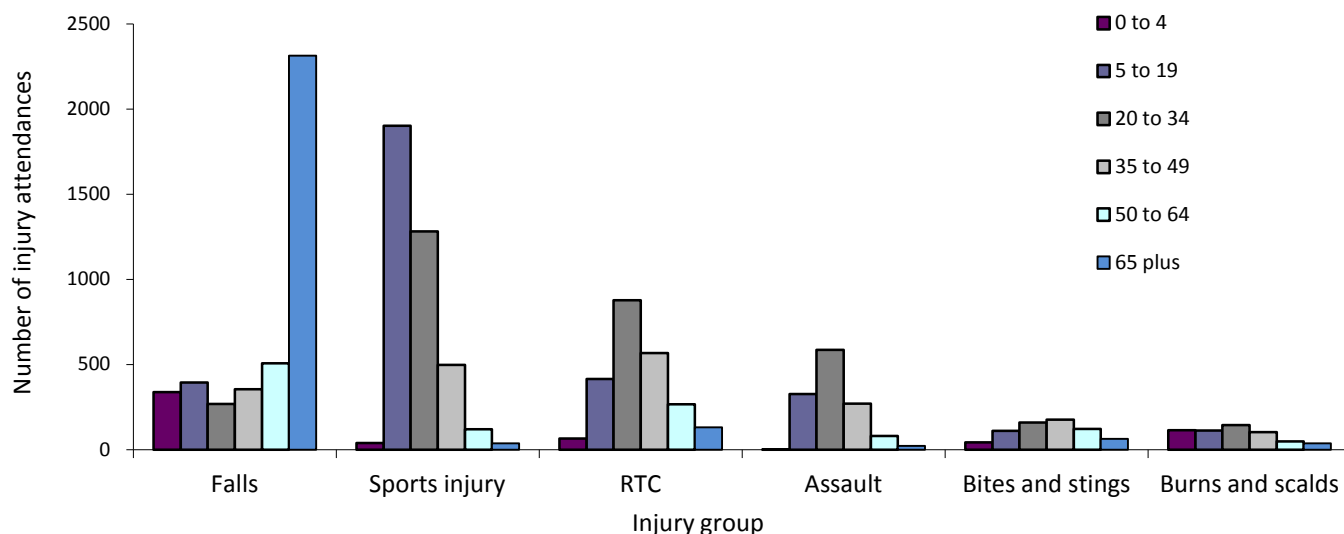


Table 2: Stepping Hill ED: Total injury attendances by ethnicity and month, July 2010 to June 2011^{23*}

Ethnicity	Jul	Aug	Sep	Oct	Nov	Dec	Jan	Feb	Mar	Apr	May	Jun	Total	%
White	2807	2468	2733	2633	2515	2255	2459	2398	3028	3010	2905	2665	31876	85
Not stated	287	270	239	237	218	235	217	184	218	254	262	256	2877	8
Not known	196	216	200	178	169	173	159	133	188	211	167	201	2191	6
Other	11	16	9	10	9	14	13	14	16	22	14	17	165	0
Mixed	14	18	12	8	9	9	10	11	13	16	15	20	155	0
Pakistani	12	15	***	20	10	10	***	7	9	18	20	17	147	0
Indian	10	10	14	7	6	10	10	7	9	5	12	7	107	0
Black	5	***	8	***	9	6	5	6	8	10	9	***	76	0
Chinese	***	***	5	7	***	***	6	***	***	***	***	***	46	0
Bangladeshi	***	***	***	***	***	***	***	***	***	***	***	***	29	0
Total	3349	3018	3226	3106	2954	2713	2885	2764	3498	3553	3412	3191	37669	100

*Percentages may not add up to 100 due to rounding.

Table 3: Stepping Hill ED: Total injury attendances by method of disposal and month, July 2010 to June 2011

Disposal	Jul	Aug	Sep	Oct	Nov	Dec	Jan	Feb	Mar	Apr	May	Jun	Total	%
Discharged	1999	1821	1903	1853	1728	1623	1745	1713	2181	2188	2090	1901	22745	60
Referred/follow-up	888	731	812	776	744	634	736	636	846	849	847	747	9246	25
Admitted	331	302	309	278	338	348	334	308	319	357	326	344	3894	10
Other	131	164	202	199	144	108	70	107	152	159	149	199	1784	5
Total	3349	3018	3226	3106	2954	2713	2885	2764	3498	3553	3412	3191	37669	100

Table 4: Stepping Hill ED: Total injury attendances by method of disposal and injury group, July 2010 to June 2011*

Disposal	Assault		Bites and stings		Burns and scalds		Falls		Other injury		RTC		Sports injury		Total	
	n	%	n	%	n	%	n	%	n	%	n	%	n	%	n	%
Discharged	696	54	484	72	173	31	1780	43	15330	62	1819	78	2463	64	22745	60
Referred/follow-up	250	19	110	16	330	59	699	17	6437	26	250	11	1170	30	9246	25
Admitted	130	10	31	5	27	5	1568	38	1891	8	127	5	120	3	3894	10
Other	213	17	50	7	28	5	131	3	1110	4	127	5	125	3	1784	5
Total	1289	100	675	100	558	100	4178	100	24768	100	2323	100	3878	100	37669	100

*Percentages may not add to 100 due to rounding.

² Please note that all numbers less than five have been suppressed in line with patient confidentiality and if there is only one number <5 in a category then two numbers will be suppressed at the next level.

³ White = Irish, British, other white background; Mixed = white and black, white and Asian, mixed any other; Other = any other ethnic group, Any other Asian background; Black = African, Caribbean, other black.

Table 5: Stepping Hill ED: Total injury attendances by mode of arrival and month, July 2010 to June 2011

Arrival mode	Jul	Aug	Sep	Oct	Nov	Dec	Jan	Feb	Mar	Apr	May	Jun	Total	%
Car	2521	2155	2404	2257	2086	1848	2051	1937	2591	2618	2542	2309	27319	73
Ambulance	539	551	523	568	589	567	571	531	563	618	560	611	6791	18
Bus	106	104	117	94	97	92	84	96	118	93	92	97	1190	3
Taxi	86	85	76	82	79	94	78	79	83	76	98	88	1004	3
Walked	66	72	76	74	80	79	61	84	97	100	69	62	920	2
Other	20	34	19	22	16	17	21	25	23	35	39	7	278	1
Police vehicle	***	14	8	7	***	12	14	10	15	12	6	14	120	0
Bicycle	***	***	***	***	***	***	***	***	***	***	***	***	27	0
Public transport	***	***	***	***	***	***	***	***	***	***	***	***	20	0
Total	3349	3018	3226	3106	2954	2713	2885	2764	3498	3553	3412	3191	37669	100

Table 6: Total assault attendances by gender, arrival mode, age group and day/time of attendance, July 2010 to June 2011

	Assault attendees		All injury attendees (n=37,669)
Gender	n	%	%
Male	915	71	55
Female	374	29	45
Arrival mode			
Ambulance	564	44	18
Other	725	56	82
Age group			
0 - 4	***	***	8
5 - 19	328	25	26
20 - 34	586	45	22
35 - 49	271	21	17
50 - 64	80	6	11
65 plus	***	***	16
Day and time of attendance			
Weekend nights*	377	29	9
Weekend day	299	23	22
Weekdays	613	48	69

*8pm to 3.59am, Friday night/Saturday morning; Saturday night/Sunday morning; Sunday night/Monday morning

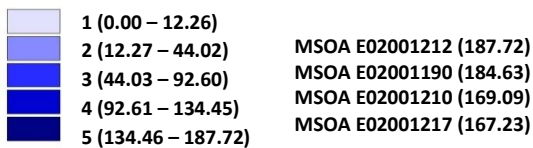
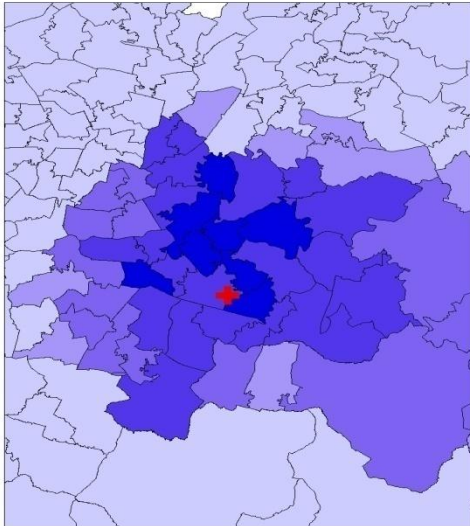
Author: Ian Warren, Published September 2011

For further information please contact: Ian Warren, Centre for Public Health, Liverpool John Moores University, 2nd Floor, Henry Cotton Building, 15-21 Webster St., Liverpool, L3 2ET, Tel: 0151 231 4513 or Email: i.j.warren@ljmu.ac.uk

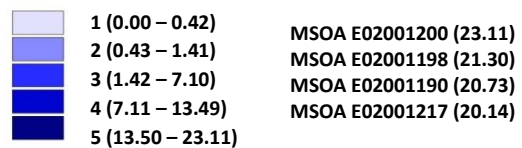
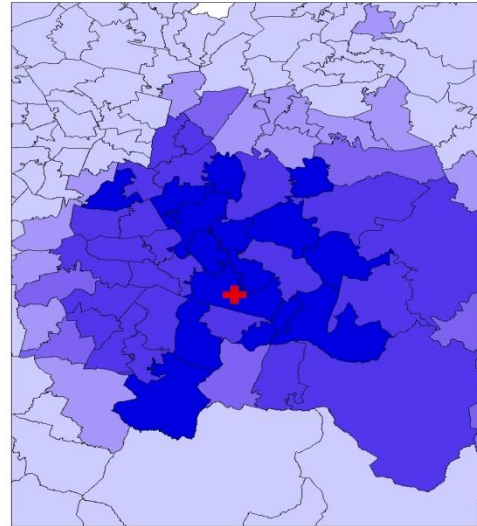
Figure 4a,b,c,d: Middle Super Output Area of residence for injury attendances to Stepping Hill ED. Quintiles of crude rates per 1,000 population, July 2010 to June 2011

a) All injury attendances: quintiles of crude rates per 1,000 population b) Fall: quintiles of crude rates per 1,000 population

⊕ Stepping Hill ED

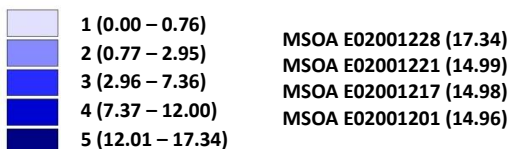
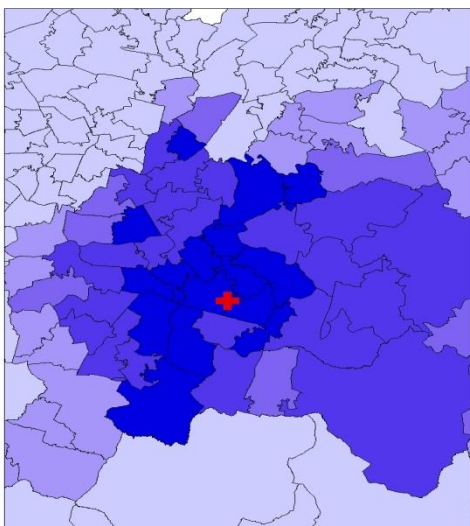


⊕ Stepping Hill ED



c) Sports injury: quintiles of crude rates per 1,000 population

⊕ Stepping Hill ED



d) RTC: quintiles of crude rates per 1,000 population

⊕ Stepping Hill ED

