

Injury attendances to Stepping Hill Emergency Department

April 2011 to March 2012

This report summarises recorded injury attendances to Stepping Hill Emergency Department (ED) between April 2011 and March 2012.

Between April 2011 and March 2012 there were 35,424 injury attendances to Stepping Hill ED. Males accounted for over half (54%) of all attendances. The month with the highest injury attendances was March (n=3,310) with December having the lowest attendances (n=2,564) (**Figure 1**). The majority (64%) of attendances did not have a specific injury group recorded. Of the specified injury groups, falls (13%) accounted for the highest proportion followed by sports injury (11%), road traffic collision (RTC) (6%) and assault (4%) (**Table 1**).

For all injuries, the highest proportion of attendances were for persons aged 5 to 19 (26%) and 20 to 34 (22%) years (**Figure 2**). Over half (55%) of fall attendees were aged 65 or over. Nearly half (45%) of assault attendees were aged 20 to 34 years. Almost four in ten (36%) of RTC attendees were aged 20 to 34 years (**Figure 3**).

The majority (87%) of attendees were white. Of the remaining attendees 11% were recorded as not stated (**Table 2**).

The disposal of a patient can give an indication of the severity of the injuries sustained. Six in ten (60%) of attendees were discharged, a quarter (25%) were

referred, and 10% were admitted (**Table 3**). Over four-fifths (82%) of RTC attendees were discharged whilst a third (33%) fall attendees were admitted (**Table 4**).

Table 5 shows the arrival methods of attendees at Stepping Hill ED. Nearly three-quarters (72%) arrived by car and 19% by ambulance.

Table 6 presents data for assault attendees to Stepping Hill ED. The majority of attendees were male (69%) and 45% were aged 20 to 34 years. Over four-fifths (43%) of assault attendances arrived by ambulance.

Figure 1: Stepping Hill ED: Total injury attendances by gender and month, April 2011 to March 2012

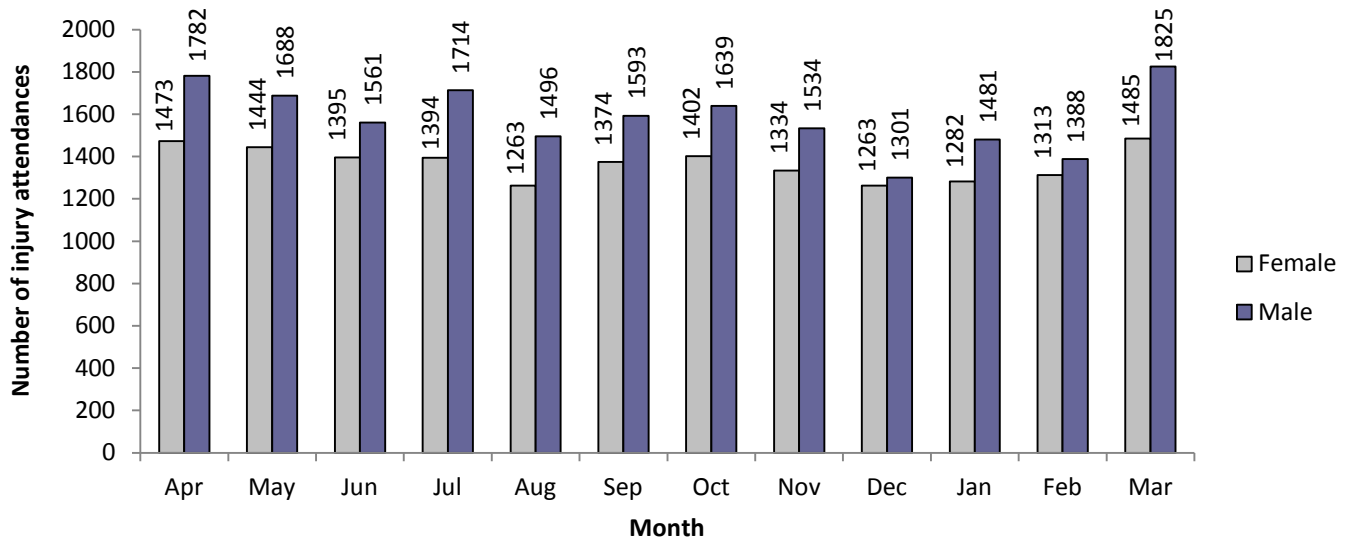


Table 1: Stepping Hill ED: Total injury attendances by injury group and month, April 2011 to March 2012

Injury group	Apr	May	Jun	Jul	Aug	Sep	Oct	Nov	Dec	Jan	Feb	Mar	Total	%
Other injury	2094	1919	1840	1956	1693	1772	1785	1700	1636	1720	1734	2067	21916	62
Fall	338	389	365	399	392	352	408	384	405	390	315	391	4528	13
Sports injury	436	393	292	311	287	403	379	367	164	265	293	469	4059	11
RTC	161	224	199	162	145	199	194	205	181	190	171	168	2199	6
Assault	116	105	97	116	117	122	125	113	105	104	90	96	1306	4
Bites & stings	56	51	87	117	84	69	79	55	29	38	49	61	775	2
Burns & scalds	54	51	76	47	41	50	71	44	44	56	49	58	641	2
Total	3255	3132	2956	3108	2759	2967	3041	2868	2564	2763	2701	3310	35424	100

Figure 2: Stepping Hill ED: Total injury attendances by age group and month, April 2011 to March 2012

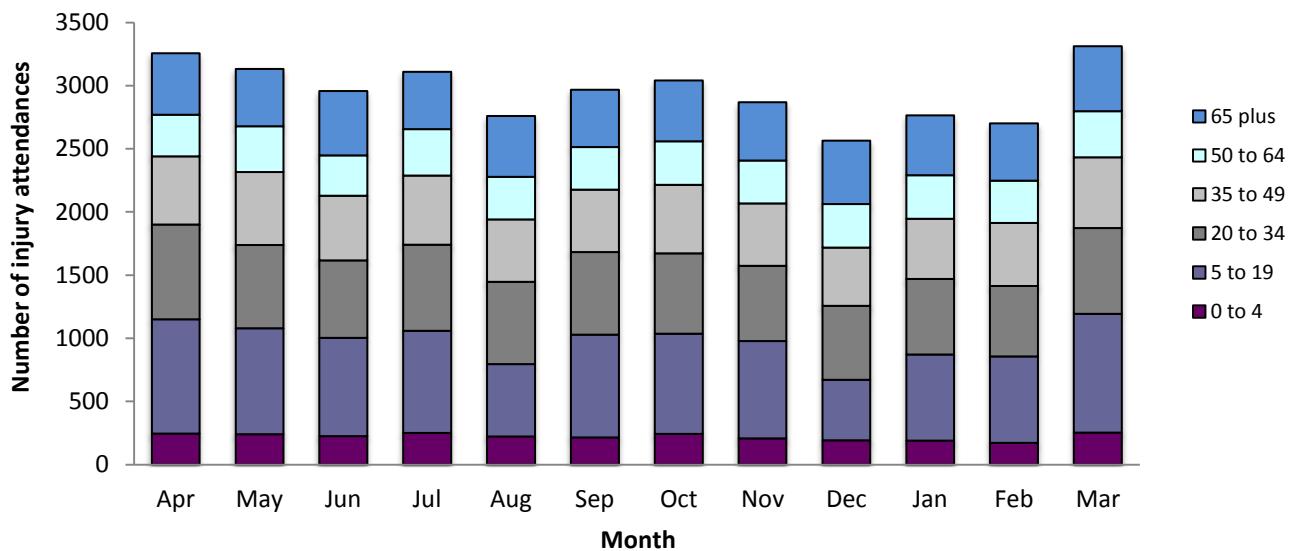


Figure 3: Stepping Hill ED: Total injury attendances by age group and injury group, April 2011 to March 2012

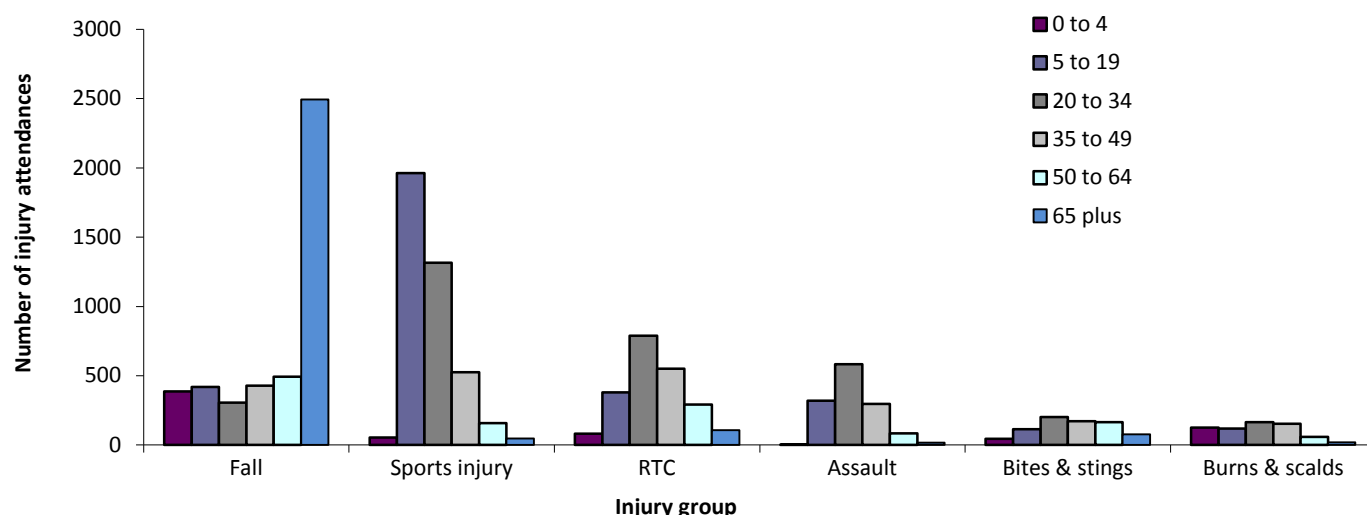


Table 2: Stepping Hill ED: Total injury attendances by ethnicity and month, April 2011 to March 2012^{1*}

Ethnicity	Apr	May	Jun	Jul	Aug	Sep	Oct	Nov	Dec	Jan	Feb	Mar	Total	%
White	2833	2719	2549	2701	2398	2579	2723	2528	2232	2424	2346	2921	30953	87
Not known	345	345	344	354	318	325	249	290	279	282	300	326	3757	11
Mixed	16	14	18	13	11	14	16	9	13	15	12	17	168	0
Pakistani	17	16	12	10	12	13	16	14	5	12	11	15	153	0
Any other Asian background	15	7	9	10	5	5	9	7	8	10	6	10	101	0
Indian	6	9	7	5	6	9	8	6	9	5	8	5	83	0
Any other ethnic group	6	5	9	8	6	7	6	6	6	6	7	5	77	0
Black	10	9	5	2	1	7	13	4	7	5	6	7	76	0
Chinese	4	4	2	5	1	4	1	2	3	2	1	3	32	0
Bangladeshi	3	4	1	0	1	4	0	2	2	2	4	1	24	0
Total	3255	3132	2956	3108	2759	2967	3041	2868	2564	2763	2701	3310	35424	100

*Percentages may not add up to 100 due to rounding.

Table 3: Stepping Hill ED: Total injury attendances by method of disposal and month, April 2011 to March 2012

Disposal	Apr	May	Jun	Jul	Aug	Sep	Oct	Nov	Dec	Jan	Feb	Mar	Total	%
Discharged	1994	1902	1729	1927	1727	1827	1809	1732	1533	1609	1651	1970	21410	60
Referral/follow-up	764	764	678	842	658	746	776	760	638	729	670	916	8941	25
Admitted	340	329	337	206	284	263	291	258	262	330	286	309	3495	10
Other	157	137	212	133	90	131	165	118	131	95	94	115	1578	4
Total	3255	3132	2956	3108	2759	2967	3041	2868	2564	2763	2701	3310	35424	100

*Percentages may not add up to 100 due to rounding.

Table 4: Stepping Hill ED: Total injury attendances by method of disposal and injury group, April 2011 to March 2012^{1*}

Disposal	Assault		Bites and stings		Burns and scalds		Fall		Other injury		RTC		Sports injury		Total	
	n	%	n	%	n	%	n	%	n	%	n	%	n	%	n	%
Discharged	709	54	561	72	232	36	1991	44	13539	62	1797	82	2581	64	21410	60
Referral/follow-up	306	23	143	18	339	53	849	19	5812	27	223	10	1269	31	8941	25
Admitted	104	8	38	5	35	5	1509	33	1590	7	104	5	115	3	3495	10
Other	187	14	33	4	35	5	180	4	975	4	75	3	94	2	1578	4
Total	1306	100	775	100	641	100	4529	100	21916	100	2199	100	4059	100	35424	100

*Percentages may not add to 100 due to rounding.

¹ Please note that all numbers less than five have been suppressed in line with patient confidentiality and if there is only one number <5 in a category then two numbers will be suppressed at the next level.

Table 5: Stepping Hill ED: Total injury attendances by arrival mode and month, April 2011 to March 2012

Arrival mode	Apr	May	Jun	Jul	Aug	Sep	Oct	Nov	Dec	Jan	Feb	Mar	Total	%
Car	2384	2303	2101	2303	1945	2178	2189	2097	1751	1923	1926	2410	25510	72
Ambulance	594	540	603	554	572	565	593	542	566	571	552	599	6851	19
Bus	87	86	89	100	84	93	106	89	80	103	84	117	1118	3
Taxi	57	89	82	70	69	57	75	55	88	69	57	74	842	2
Walked	91	62	59	65	60	49	57	55	47	64	51	78	738	2
Other	32	40	7	6	10	14	8	9	14	13	18	17	188	1
Police	9	7	12	7	12	8	10	14	14	16	12	7	128	0
Bicycle	1	4	2	1	6	2	1	3	2	2	1	5	30	0
Public transport	0	1	1	2	1	1	2	4	2	2	0	3	19	0
Total	3255	3132	2956	3108	2759	2967	3041	2868	2564	2763	2701	3310	35424	100

Table 6: Total assault attendances by gender, arrival mode and age group, April 2011 to March 2012

Gender	Assault attendees (n=1,306)		All injury attendees (n=35,424)
	n	%	%
Male	907	69	54
Female	399	31	46
Arrival mode			
Ambulance	558	43	19
Other	748	57	81
Age group			
0 - 4	***	***	7
5 - 19	320	25	26
20 - 34	584	45	22
35 - 49	296	23	17
50 - 64	85	7	12
65 plus	***	***	16

Published: August 2012

For further information please contact: Ian Warren, Centre for Public Health, Liverpool John Moores University, 2nd Floor,
Henry Cotton Building, 15-21 Webster St., Liverpool, L3 2ET, Tel: 0151 231 4513 or Email: ij.warren@ljmu.ac.uk