

Injury attendances to Tameside Emergency Department

April 2010 to March 2011

This report summarises recorded injury attendances to Tameside Emergency Department (ED) between April 2010 and March 2011.

Between April 2010 and March 2011 there were 74,973 injury attendances to Tameside ED. Males accounted for just over half (51%) of all attendances. The month with the highest attendances for injury was May (n=6,760) with February having the lowest (n=5,670) (**Figure 1**). The majority of attendances were recorded as other injury (87%); falls accounted for the highest proportion (6%) of specified injury groups followed by road traffic collisions (RTC) (2%) and assaults (2%) (**Table 1**).

For all injuries the highest proportion of attendances were for persons aged 20 to 34 (22%) and 65 plus (19%) years (**Figure 2**). Nearly a third (32%) of fall injury attendances were by persons aged 65 or over. Nearly two-fifths (39%) of RTC attendances were for persons aged 20 to 34. Over a half (55%) of all sports injury attendances were for persons aged 5 to 19 with over a third (36%) aged between 20 and 34 (**Figure 3**).

Table 2 shows the ethnicity of injury attendees to Tameside ED. Over four-fifths (83%) were white, 11% were recorded as unknown and 2% were Pakistani.

The disposal of a patient can give an indication of the severity of the injuries sustained. Most attendees

were referred for further treatment (59%), nearly a quarter (23%) were admitted and 11% were discharged. (**Table 3**). Nearly four in ten (37%) of deliberate self harm (DSH) attendees were referred whilst nearly two-fifths (39%) were admitted. Nearly three-quarters (74%) of sports injury attendances were referred. Over a fifth (22%) of RTC attendances were discharged (**Table 4**).

Table 5 shows the arrival method of injury attendances at Tameside ED. For nearly seven in ten (69%) of attendees the method of arrival was recorded as other.

Table 6 shows assault attendances to Tameside ED. Over seven in ten (72%) of assault attendees were male, and over two-fifths (42%) were aged 20 to 34. Nearly a half (49%) of assault attendees arrived at the ED by ambulance, and nearly two-fifths (39%) of assault attendances occurred at weekend nights.

Figure 4 (a-d) shows crude rates of injury attendance at Tameside ED by area of residence, in this case Middle Super Output Area (MSOA). The MSOA with the highest crude rates are indicated beneath each figure.¹

¹ Population figures are drawn from mid-2008 population estimates from the Office for National Statistics.

Figure 1: Tameside ED: Total injury attendances by gender and month, April 2010 to March 2011

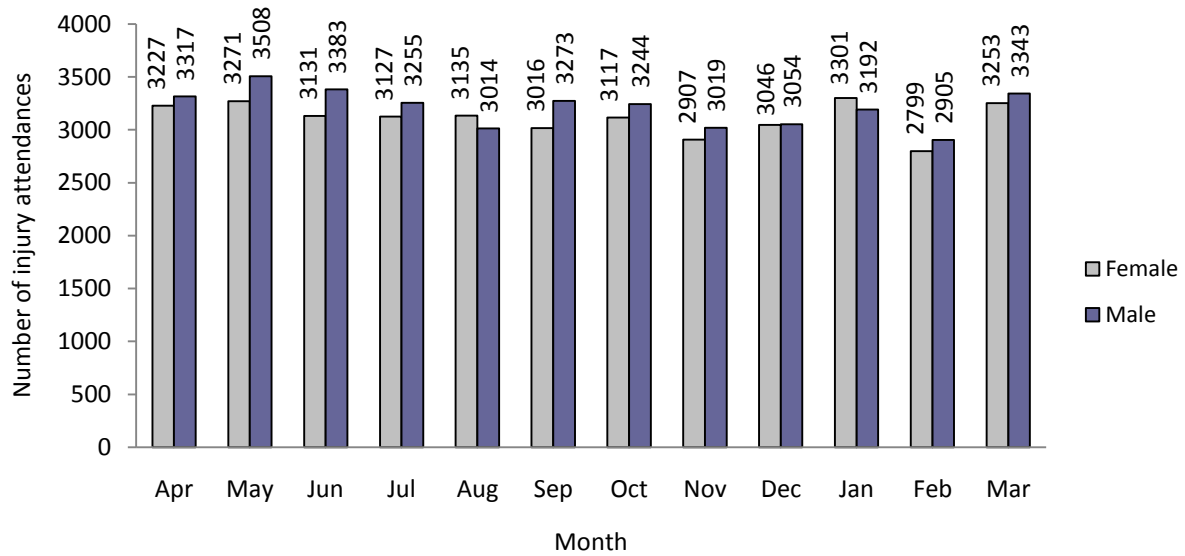


Table 1: Tameside ED: Total injury attendances by injury group and month, April 2010 to March 2011

Injury group	Apr	May	Jun	Jul	Aug	Sep	Oct	Nov	Dec	Jan	Feb	Mar	Total	%
Other	5641	5789	5612	5291	5117	5525	5476	5145	5363	5623	5018	5754	65354	87
Fall	401	442	432	403	384	320	368	306	398	405	281	362	4502	6
RTC	133	213	140	136	118	142	160	143	141	121	100	140	1687	2
Assault	112	102	146	109	100	96	119	77	79	117	114	77	1248	2
Sports injury	117	115	77	95	67	102	101	77	20	74	82	133	1060	1
DSH	69	51	52	73	51	48	58	55	36	60	45	54	652	1
Alcohol related	48	48	29	46	53	27	43	25	30	50	30	41	470	1
Total	6521	6760	6488	6153	5890	6260	6325	5828	6067	6450	5670	6561	74973	100

Figure 2: Tameside ED: Total injury attendances by age group and month, April 2010 to March 2011

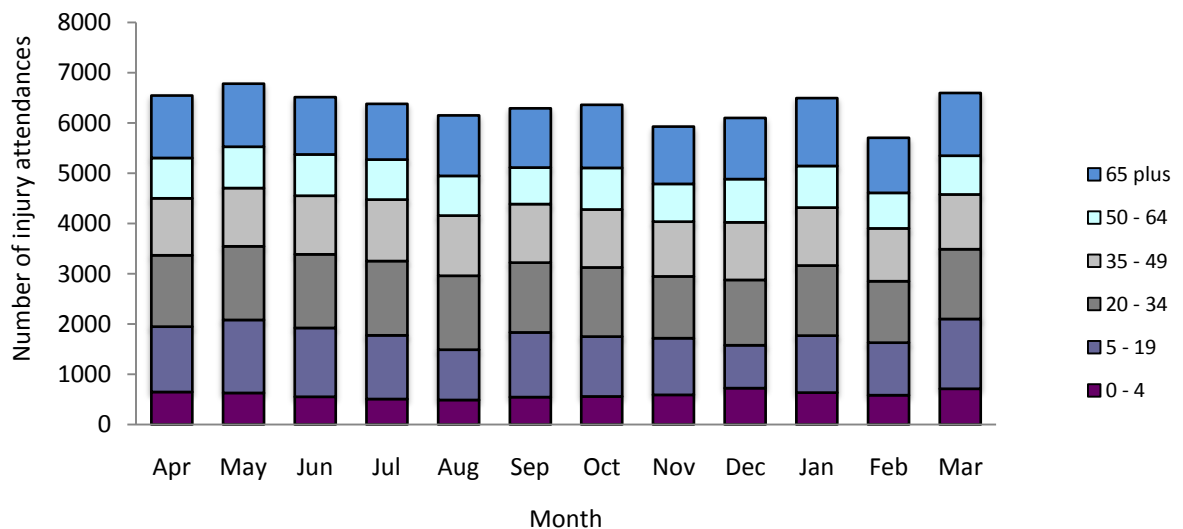


Figure 3: Tameside ED: Total injury attendances by age group and injury group, April 2010 to March 2011

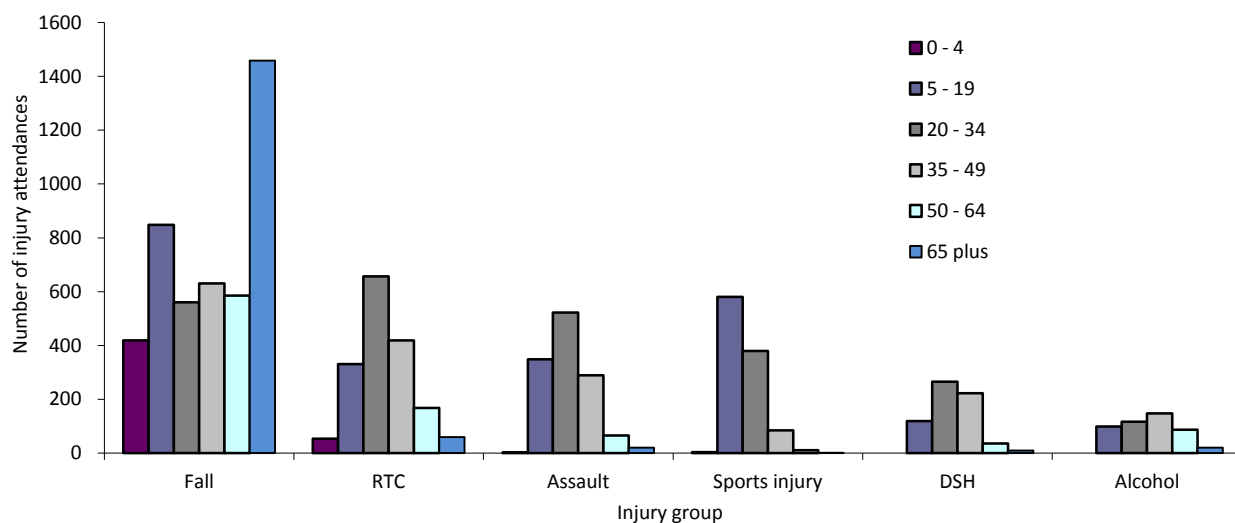


Table 2: Tameside ED: Total injury attendances by ethnicity and month, April 2010 to March 2011^{2*}

Ethnicity	Apr	May	Jun	Jul	Aug	Sep	Oct	Nov	Dec	Jan	Feb	Mar	Total	%
White	5421	5608	5255	5057	4903	5189	5235	4846	4995	5347	4636	5414	61906	83
Not recorded	713	703	770	656	603	681	638	590	641	642	650	699	7986	11
Pakistani	101	124	105	102	86	90	108	104	102	121	96	107	1261	2
Any other ethnic	71	64	89	83	89	63	85	64	89	84	69	91	941	1
Bangladeshi	75	87	80	82	52	76	64	65	60	80	64	81	866	1
Indian	41	65	51	51	57	44	80	48	55	52	37	61	642	1
Not stated	34	40	53	28	25	45	44	41	45	50	38	36	479	1
Mixed	38	28	43	50	34	37	28	40	34	38	41	38	449	1
Black	15	21	20	28	20	20	25	25	20	19	23	20	256	0
Chinese	***	12	9	9	9	8	7	***	21	7	***	***	111	0
Asian other	***	9	14	7	12	7	11	***	5	10	***	***	91	0
Total	6521	6760	6488	6153	5890	6260	6325	5828	6067	6450	5670	6561	74973	100

*Percentages may not add up to 100 due to rounding

Table 3: Tameside ED: Total injury attendances by method of disposal and month, April 2010 to March 2011³

Disposal method	Apr	May	Jun	Jul	Aug	Sep	Oct	Nov	Dec	Jan	Feb	Mar	Total	%
Referred/follow-up	3941	4077	3869	3586	3504	3888	3724	3482	3577	3630	3214	3699	44191	59
Admitted	1474	1498	1294	1343	1326	1328	1465	1441	1534	1683	1497	1587	17470	23
Discharged	614	779	879	781	676	697	740	519	523	629	538	780	8155	11
Other	492	406	446	443	384	347	396	386	433	508	421	495	5157	7
Total	6521	6760	6488	6153	5890	6260	6325	5828	6067	6450	5670	6561	74973	100

² White = white Irish, white British, white; Mixed = mixed white and black, mixed white and black African, mixed white and Asian, mixed any other; Other = Any other ethnic group, Any other Asian background; Black = African, Caribbean, other black

³ Admitted=admitted to ED bed/became a lodged patient of the same health care provider; Discharged=discharged - did not require any follow up treatment; Referred=discharged - follow up treatment to be provided by GP, referred to ED clinic, referred to fracture clinic, referred to other out-patient clinic, transferred to other health care provider, referred to other health care professional; Other=died in department, left department before being treated, left department having refused treatment, other.

Table 4: Tameside ED: Total injury attendances by method of disposal and injury group (excluding other injury and not recorded), April 2010 to March 2011*

Disposal method	Assault		Sports		DSH		RTC		Fall		Alcohol		Total	
	n	%	n	%	n	%	n	%	n	%	n	%	n	%
Admitted	77	6	14	1	253	39	64	4	658	15	83	18	1149	12
Referred	793	64	782	74	244	37	1169	69	2935	65	225	48	6148	64
Discharged	184	15	226	21	14	2	369	22	686	15	49	10	1528	16
Other	194	16	38	4	141	22	85	5	223	5	113	24	794	8
Total	1248	100	1060	100	652	100	1687	100	4502	100	470	100	9619	100

*Percentages may not add up to 100 due to rounding.

Table 5: Tameside ED: Total injury attendances by mode of arrival and month, April 2010 to March 2011

Mode	Apr	May	Jun	Jul	Aug	Sep	Oct	Nov	Dec	Jan	Feb	Mar	Total	%
Ambulance	1993	1942	1958	1840	1871	1913	2044	1947	2071	2250	1836	1975	23640	31
Other	4528	4818	4530	4313	4019	4347	4281	3881	3996	4200	3834	4586	51333	69
Total	6521	6760	6488	6153	5890	660	6325	5828	6067	6450	5670	6561	74973	100

Table 6: Tameside General Hospital ED: Assault attendances by gender, mode of arrival, age group and day/time of attendance, April 2010 to March 2011

Injury type	Assault attendees		All injuries % (n=75,837)
Gender	n	%	%
Female	354	28	46
Male	894	72	54
Mode	n	%	%
Ambulance	616	49	31
Other	632	51	69
Age group	n	%	%
0 - 4	***	0	13
5 - 19	349	28	26
20 - 34	522	42	24
35 - 49	289	23	16
50 - 64	66	5	10
65 plus	***	2	12
Day & time	n	%	%
Weekend nights*	486	39	11
Weekend days	250	20	20
Weekdays	515	41	69

*8pm to 4am, Friday night/Saturday morning; Saturday night/Sunday morning; Sunday night/Monday morning

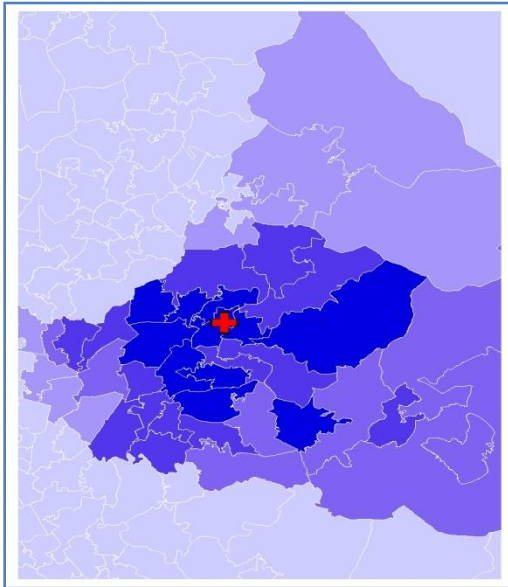
Author: Ian Warren, Published: June 2011

For further information please contact: Centre for Public Health, Research Directorate, Liverpool John Moores University, 2nd Floor, Henry Cotton Building, 15-21 Webster Street, Liverpool, L3 2ET, Tel: 0151 231 4513 or Email: i.j.warren@ljmu.ac.uk . Website: www.tiig.info

Figure 4a,b,c,d: Middle Super Output Area of residence for injury attendances to Tameside ED. Quintiles of crude rates per 1,000 population, April 2010 to March 2011

a) All injuries: quintiles of crude rates per 1,000 population

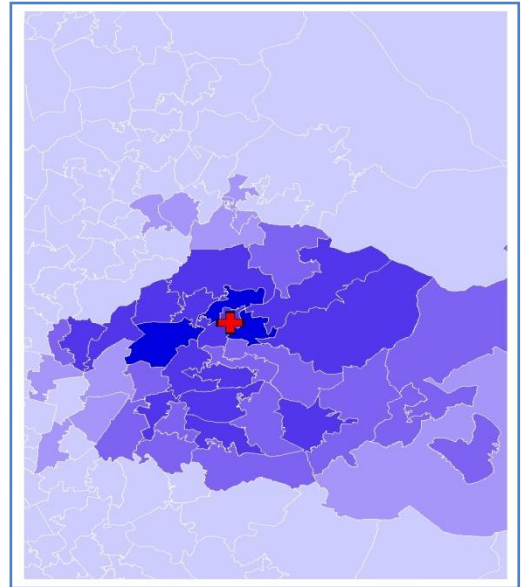
✚ Tameside ED



1 (0.00 – 14.32)	MSOA E02001236 (453.29)
2 (14.33 – 89.37)	MSOA E02001241 (447.88)
3 (89.38 – 226.83)	MSOA E02001234 (438.73)
4 (226.84 – 314.06)	MSOA E02001232 (418.44)
5 (314.07 – 453.29)	

b) Fall injuries: quintiles of crude rates per 1,000 population

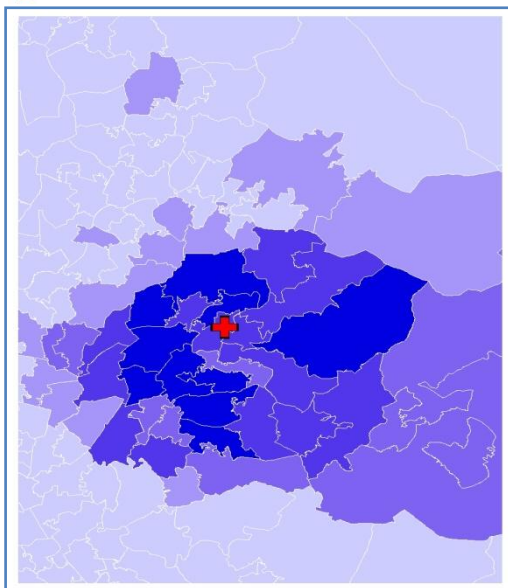
✚ Tameside ED



1 (0.00 – 0.88)	MSOA E02001234 (28.27)
2 (0.89 – 2.63)	MSOA E02001236 (25.88)
3 (2.64 – 11.77)	MSOA E02001246 (24.50)
4 (11.78 – 18.32)	MSOA E02001232 (23.79)
5 (18.33 – 28.27)	

c) RTC: quintiles of crude rates per 1,000 population

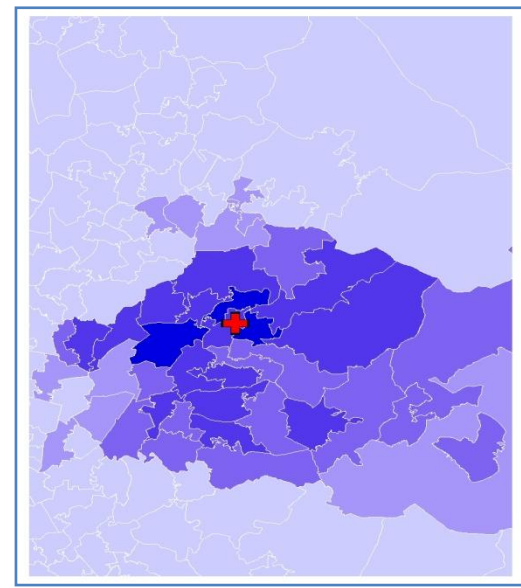
✚ Tameside ED



1 (0.00 – 0.39)	MSOA E02001247 (9.27)
2 (0.40 – 1.58)	MSOA E02001237 (9.08)
3 (1.59 – 4.72)	MSOA E02001232 (8.95)
4 (4.73 – 6.86)	MSOA E02001245 (8.87)
5 (6.87 – 9.27)	

d) Assault: quintiles of crude rates per 1,000 population

✚ Tameside ED



1 (0.00 – 0.38)	MSOA E02001232 (9.57)
2 (0.39 – 1.62)	MSOA E02001236 (8.63)
3 (1.63 – 3.97)	MSOA E02001241 (8.43)
4 (3.98 – 6.71)	MSOA E02001255 (6.71)
5 (6.72 – 9.57)	