



**TIIG**  
INJURY SURVEILLANCE IN THE NORTH WEST OF ENGLAND

**TRAFFORD GENERAL HOSPITAL EMERGENCY DEPARTMENT**

**MONTHLY BULLETIN: OCTOBER 2013 TO SEPTEMBER 2014**

This bulletin provides a breakdown of all injury attendances to Trafford General Hospital Emergency Department (ED) between October 2013 and September 2014.

During this twelve month period there were 47,020 injury attendances to the ED. The month with the highest injury attendances, calculated as a daily average, was October 2013 (146 per day) with December 2013 having the lowest attendances (101 per day; **Figure 1**).

Females accounted for just over half (51%) of all injury attendances (**Figure 1**). The highest proportion of attendances was for persons aged between 20 and 34 years (22%; **Figure 2**).

The majority (93%) of attendances were recorded as other injury. Sports injuries accounted for 4% of all injury attendances while 2% were sustained by road traffic collisions (RTCs; **Table 1**). Over half (54%) of sports injury attendees were aged between five and 19 years and over four in ten (41%) RTC attendees were aged between 20 and 34 years (**Figure 3**).

**Table 2** shows the ethnicity of attendees to Trafford General ED. Almost nine in ten (88%) were recorded as White.

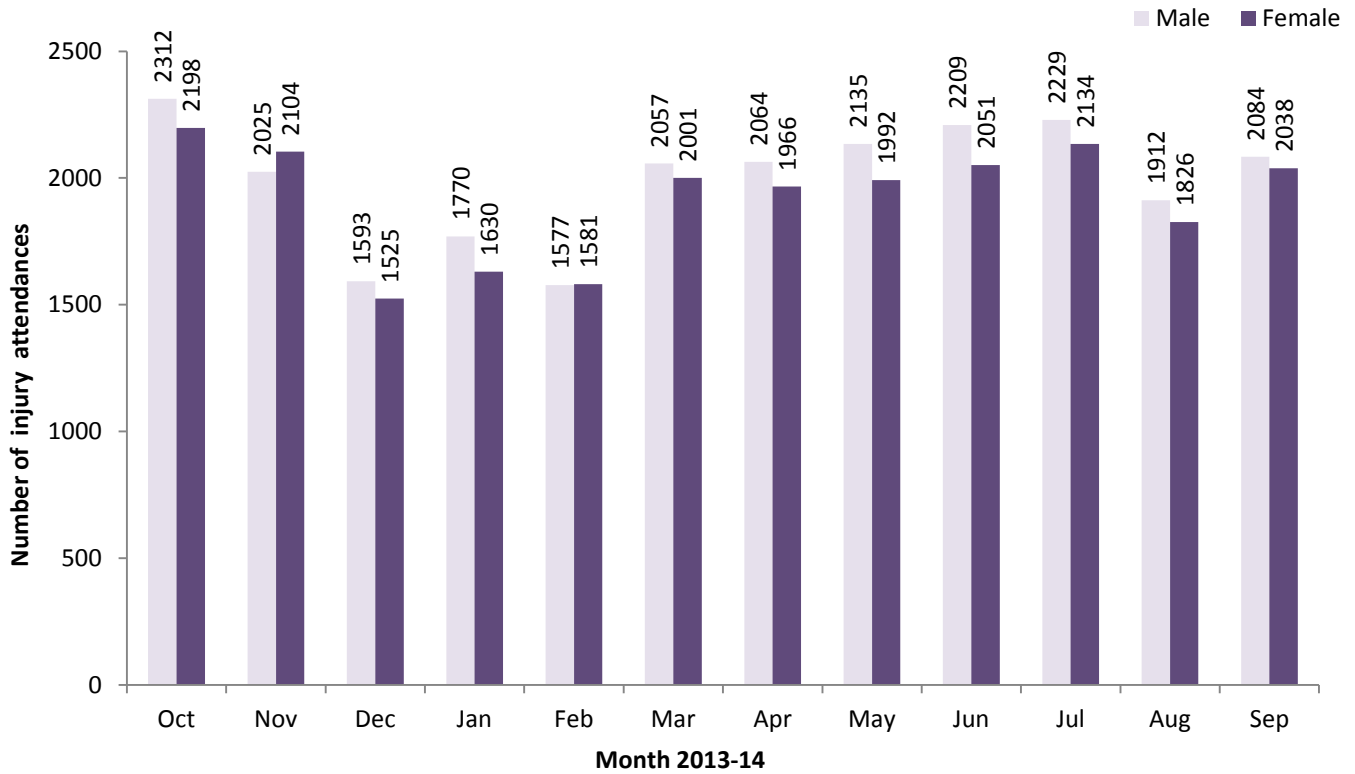
The disposal of a patient can give an indication of the severity of the injuries sustained. Forty-six per cent of attendees were referred for further treatment, over two-fifths (41%) were discharged with no follow-up treatment required and 7% were admitted to hospital (**Table 3**). Almost six in ten (58%) RTC attendees and over half (53%) of sports injury attendees were discharged, while six in ten (60%) deliberate self-harm (DSH) attendees were referred for further treatment (**Table 4**).

***Assault attendances***

Between October 2013 and September 2014 there were 301 assault-related injury attendances to Trafford General Hospital ED.

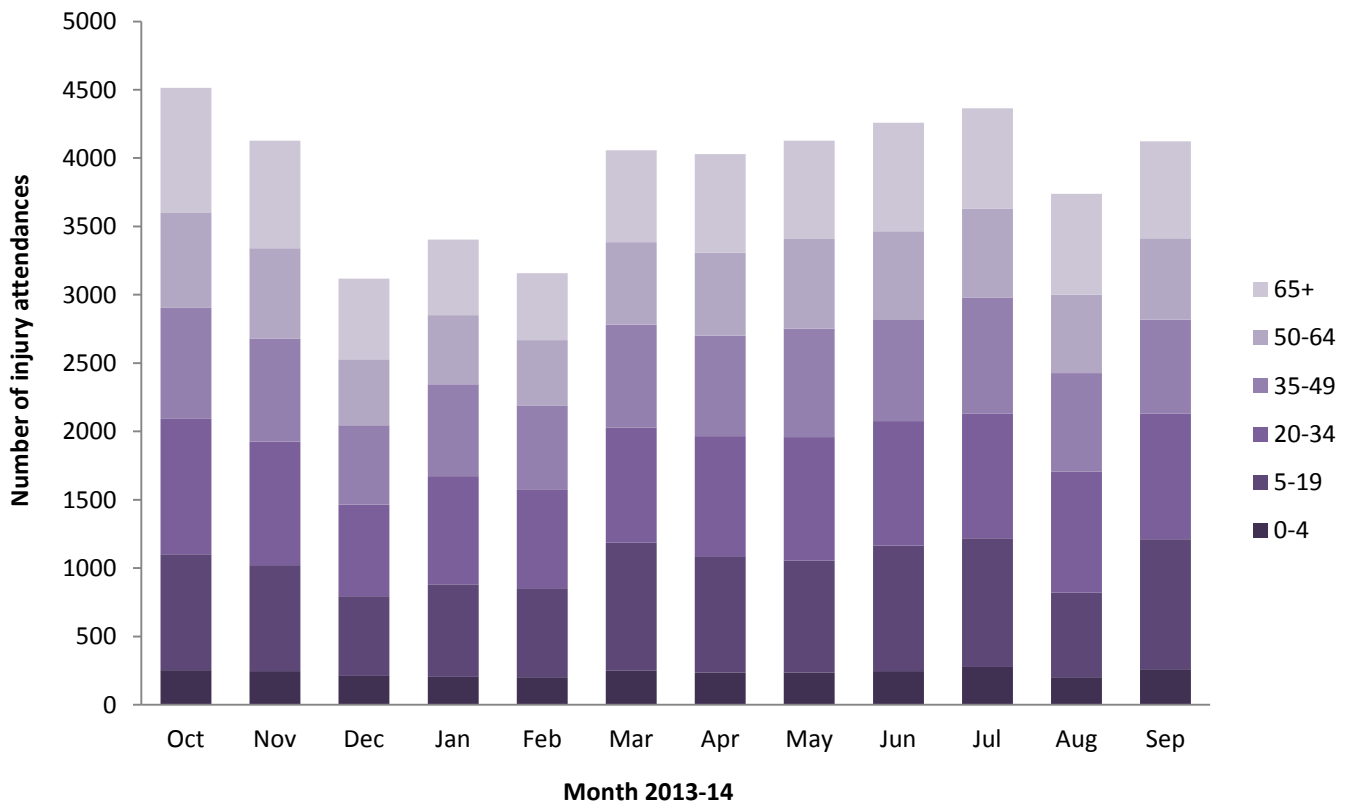
Almost seven in ten (68%) assault attendees were male and over four in ten (41%) were aged between 20 and 34 years. Almost one in ten (9%) arrived at the ED by ambulance (**Table 6**).

Figure 1: ED injury attendances by gender and month, October 2013 to September 2014<sup>^</sup>



<sup>^</sup>There were 7 records where the gender was unknown; these have been omitted from the chart.

Figure 2: ED injury attendances by age group and month, October 2013 to September 2014<sup>§</sup>

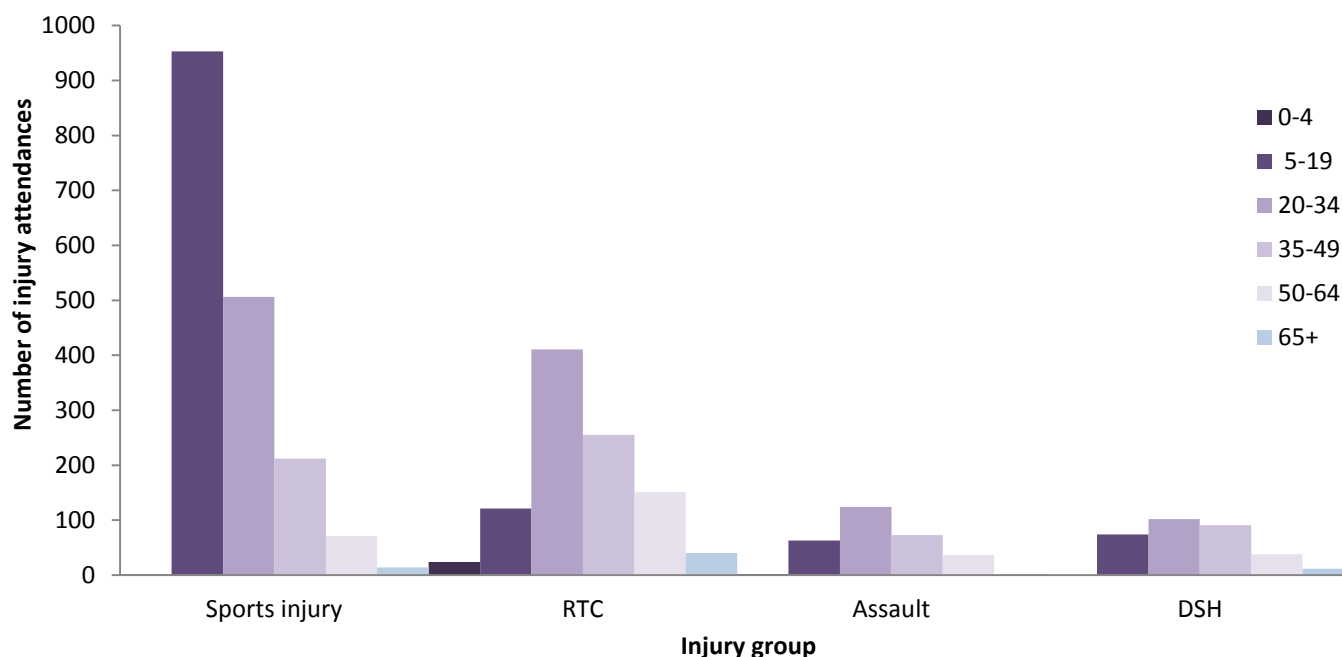


<sup>§</sup> There were 5 records where the age was unknown; these have been omitted from the chart.

**Table 1: ED injury attendances by injury group and month, October 2013 to September 2014**

Injury group	Oct	Nov	Dec	Jan	Feb	Mar	Apr	May	Jun	Jul	Aug	Sep	Total	%
Other injury	4182	3869	2915	3167	2868	3674	3726	3856	3967	4130	3536	3753	43643	93
Sports injury	173	99	106	119	182	248	179	119	131	86	86	229	1757	4
RTC	76	80	65	75	59	86	82	115	101	90	75	98	1002	2
DSH	59	53	16	15	22	20	20	18	25	31	18	20	317	1
Assault	23	29	16	27	27	30	23	19	36	26	23	22	301	1
<b>Total</b>	<b>4513</b>	<b>4130</b>	<b>3118</b>	<b>3403</b>	<b>3158</b>	<b>4058</b>	<b>4030</b>	<b>4127</b>	<b>4260</b>	<b>4363</b>	<b>3738</b>	<b>4122</b>	<b>47020</b>	<b>100</b>

**Figure 3: ED injury attendances by age group and injury group (excluding other injury), October 2013 to September 2014**



**Table 2: ED injury attendances by ethnicity and month, October 2013 to September 2014<sup>1,2</sup>**

Ethnicity	Oct	Nov	Dec	Jan	Feb	Mar	Apr	May	Jun	Jul	Aug	Sep	Total	%
White	3969	3692	2676	2969	2750	3549	3517	3554	3781	3881	3285	3605	41228	88
Pakistani	100	99	97	102	70	115	94	123	117	91	112	124	1244	3
Black	85	67	76	61	59	74	90	90	70	70	69	66	877	2
Mixed	81	66	55	60	66	90	76	94	75	85	67	91	906	2
Indian	71	63	42	57	58	70	77	81	90	72	61	99	841	2
Other ethnic group	63	38	58	58	62	71	83	80	71	55	50	52	741	2
Not stated	61	38	42	43	32	27	64	50	0	52	47	35	491	1
Asian other	27	23	29	30	19	25	10	22	27	26	20	23	281	1
Not known	27	27	9	13	15	18	0	8	10	11	10	6	154	0
Chinese	23	9	29	<10	17	14	<20	17	14	14	<15	14	187	0
Bangladeshi	6	8	5	***	10	5	***	8	5	6	***	7	70	0
<b>Total</b>	<b>4513</b>	<b>4130</b>	<b>3118</b>	<b>3403</b>	<b>3158</b>	<b>4058</b>	<b>4030</b>	<b>4127</b>	<b>4260</b>	<b>4363</b>	<b>3738</b>	<b>4122</b>	<b>47020</b>	<b>100</b>

<sup>1</sup> Please note that for all tables, all numbers less than five have been suppressed (with \*\*\*) in line with patient confidentiality. If there is only one number less than five in a category then two numbers will be suppressed to prevent back calculation from totals.

<sup>2</sup> White = Irish, British, other White background; Mixed = White and Black, White and Asian, mixed - any other; Black = African, Caribbean, other Black.

**Table 3: ED injury attendances by disposal method and month, October 2013 to September 2014**

Disposal method	Oct	Nov	Dec	Jan	Feb	Mar	Apr	May	Jun	Jul	Aug	Sep	Total	%
Referral/follow-up	1767	1656	1236	1438	1426	1824	1912	2063	2223	2161	1662	2109	21477	46
Discharged	1806	1604	1511	1534	1382	1728	1632	1559	1531	1711	1625	1621	19244	41
Admitted	641	522	204	222	214	238	240	246	246	240	218	226	3457	7
Other	299	348	167	209	136	268	246	259	260	251	233	166	2842	6
<b>Total</b>	<b>4513</b>	<b>4130</b>	<b>3118</b>	<b>3403</b>	<b>3158</b>	<b>4058</b>	<b>4030</b>	<b>4127</b>	<b>4260</b>	<b>4363</b>	<b>3738</b>	<b>4122</b>	<b>47020</b>	<b>100</b>

**Table 4: ED injury attendances by disposal method and injury group (excluding other injury), October 2013 to September 2014<sup>1</sup>**

Disposal method	Assault		DSH		RTC		Sports injury		Total	
	n	%	n	%	n	%	n	%	n	%
Discharged	131	44	43	15	582	58	938	53	1694	50
Referral/follow-up	151	50	173	60	394	39	763	43	1481	44
Other	11	4	68	11	<30	2	<55	3	117	3
Admitted	8	3	33	13	***	0	<10	0	85	3
<b>Total</b>	<b>301</b>	<b>100</b>	<b>317</b>	<b>100</b>	<b>1002</b>	<b>100</b>	<b>1757</b>	<b>100</b>	<b>3377</b>	<b>100</b>

**Table 5: ED injury attendances by arrival mode and month, October 2013 to September 2014**

Arrival mode	Oct	Nov	Dec	Jan	Feb	Mar	Apr	May	Jun	Jul	Aug	Sep	Total	%
Other	3880	3577	2982	3254	3021	3894	3884	3968	4113	4230	3603	4003	44409	94
Ambulance	633	553	136	149	137	164	146	159	147	133	135	119	2611	6
<b>Total</b>	<b>4513</b>	<b>4130</b>	<b>3118</b>	<b>3403</b>	<b>3158</b>	<b>4058</b>	<b>4030</b>	<b>4127</b>	<b>4260</b>	<b>4363</b>	<b>3738</b>	<b>4122</b>	<b>47020</b>	<b>100</b>

## ASSAULTS

**Table 6: ED assault attendances by gender, arrival mode and age group, October 2013 to September 2014<sup>1</sup>**

	Assault attendances (n=301)		All injury attendances (n=47,020)
	n	%	%
<b>Gender</b>			
Female	96	32	51
Male	205	68	49
<b>Arrival mode</b>			
Other	274	91	94
Ambulance	27	9	6
<b>Age group</b>			
0 - 4	***	1	6
5 - 19	63	21	20
20 - 34	124	41	22
35 - 49	73	24	19
50 - 64	37	12	15
65 plus	***	1	18

Published January 2015

Trauma and Injury Intelligence Group

Centre for Public Health, Faculty of Education, Health and Community, Liverpool John Moores University,  
2nd Floor, Henry Cotton Building, Liverpool L3 2ET

T: 0151 231 4498 | E: [tiig@ljmu.ac.uk](mailto:tiig@ljmu.ac.uk) | W: [www.tiig.info](http://www.tiig.info) and [www.cph.org.uk](http://www.cph.org.uk) | Twitter: [www.twitter.com/tiig\\_cph](https://twitter.com/tiig_cph)