

Injury attendances to Trafford General Hospital Emergency Department

January to December 2011

This report summarises recorded injury attendances to Trafford General Emergency Department (ED) between January and December 2011.

Between January and December 2011 there were 57,174 injury attendances to Trafford General ED. Females accounted for half (50%) of all injury attendances. The month with the highest injury attendances was July (n=5,198) with February (n=4,041) having the lowest attendances ([Figure 1](#)). The majority of attendances were recorded as other injury (94%). Road traffic collisions (RTC) accounted for 2% of all injury attendances, as did sports injury ([Table 1](#)).

For all injuries the highest proportion of attendances were for persons aged 20 to 34 (21%) and 5 to 19 years (19%) ([Figure 2](#)). Nearly four in ten (39%) of RTC attendees were aged 20 to 34 years. Over half (51%) of sports injury attendees were aged 5 to 19 years ([Figure 3](#)).

[Table 2](#) shows the ethnicity of attendees to Trafford General ED. Almost nine in ten (86%) were white.

The disposal of a patient can give an indication of the severity of the injuries sustained. Two-fifths (40%) of attendees were discharged, nearly four in ten (36%) were referred and 12% were admitted to hospital ([Table 3](#)). Almost two-thirds (65%) of RTC attendees were discharged. Over half (53%) of sports injury

attendees were discharged, while over a quarter (26%) of deliberate self-harm (DSH) attendees were admitted ([Table 4](#)).

[Table 5](#) shows the arrival methods of attendances at Trafford General ED. Over four-fifths (84%) of attendees arrived by other means, whilst 16% arrived by ambulance.

[Table 6](#) shows assault attendances to Trafford General ED. Seven in ten (70%) of assault attendees were male, and over two-fifths (43%) were aged 20 to 34 years. Almost three in ten (29%) of assault attendees arrived at the ED by ambulance.

Figure 1: Trafford General ED: Total injury attendances by gender and month, January to December 2011

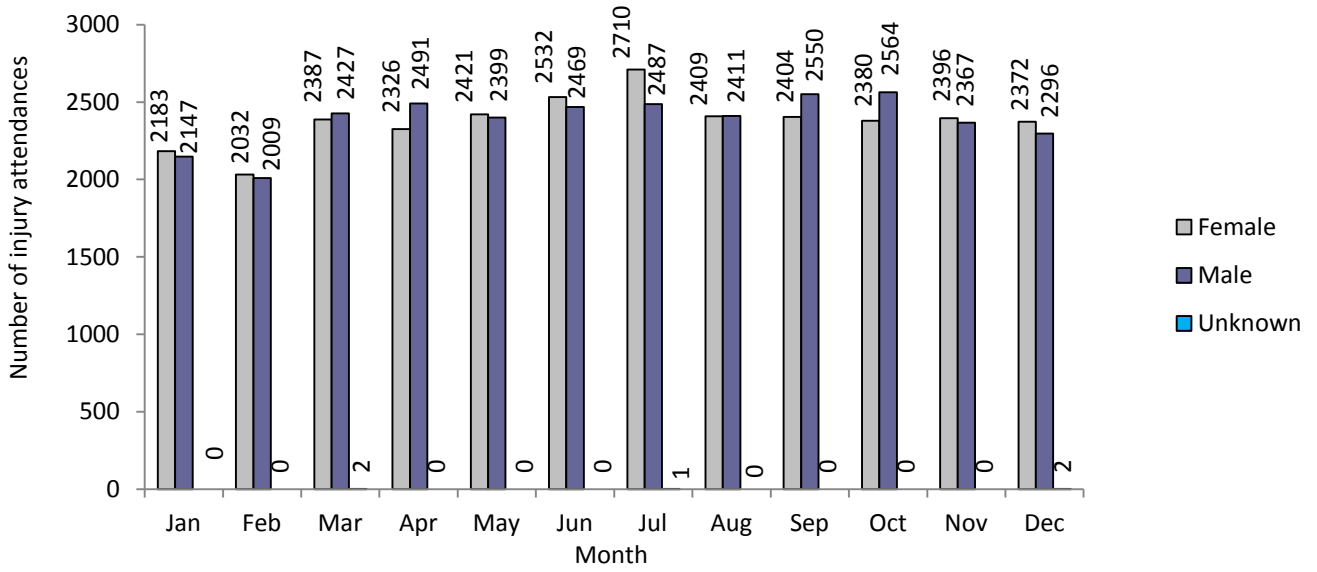


Table 1: Trafford General ED: Total injury attendances by injury group and month, January to December 2011*

Injury group	Jan	Feb	Mar	Apr	May	Jun	Jul	Aug	Sep	Oct	Nov	Dec	Total	%
Other injury	4098	3831	4529	4531	4521	4808	4915	4590	4582	4508	4412	4388	53713	94
RTC	95	97	119	116	131	80	94	85	92	138	112	131	1290	2
Sports injury	60	52	99	80	72	45	110	59	187	186	157	64	1171	2
Assault	34	31	44	44	46	33	38	53	50	61	53	37	524	1
DSH	43	30	25	46	50	35	41	33	43	51	29	50	476	0
Total	4330	4041	4816	4817	4820	5001	5198	4820	4954	4944	4763	4670	57174	100

*Percentages may not total 100 due to rounding.

Figure 2: Trafford General ED: Total injury attendances by age group and month, January to December 2011

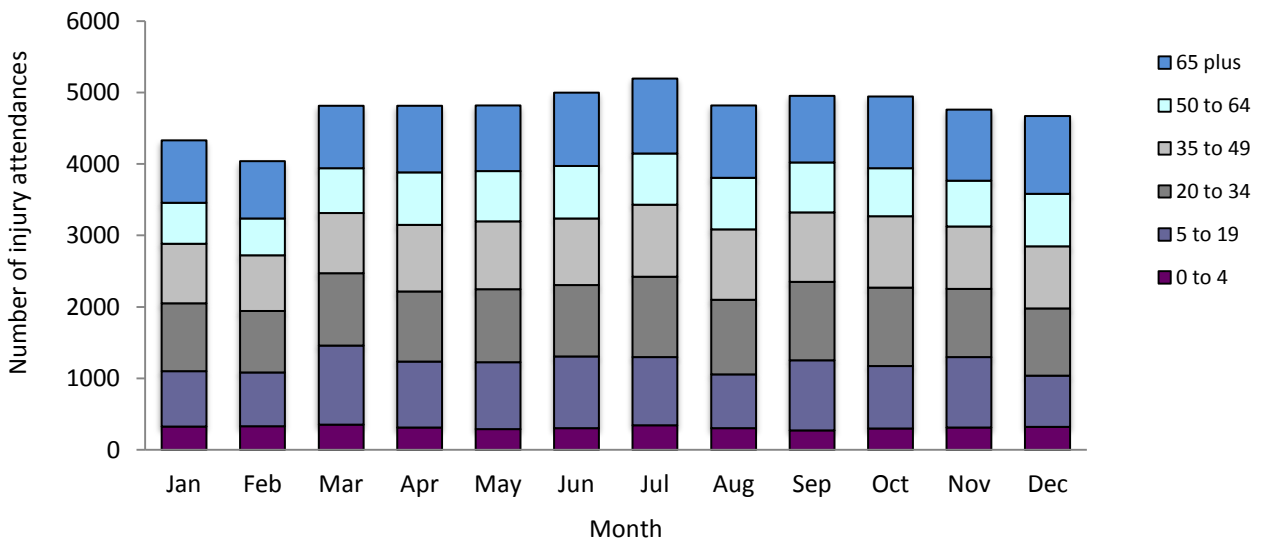


Figure 3: Trafford General ED: Total injury attendances by age group and injury group (excluding other injury), January to December 2011

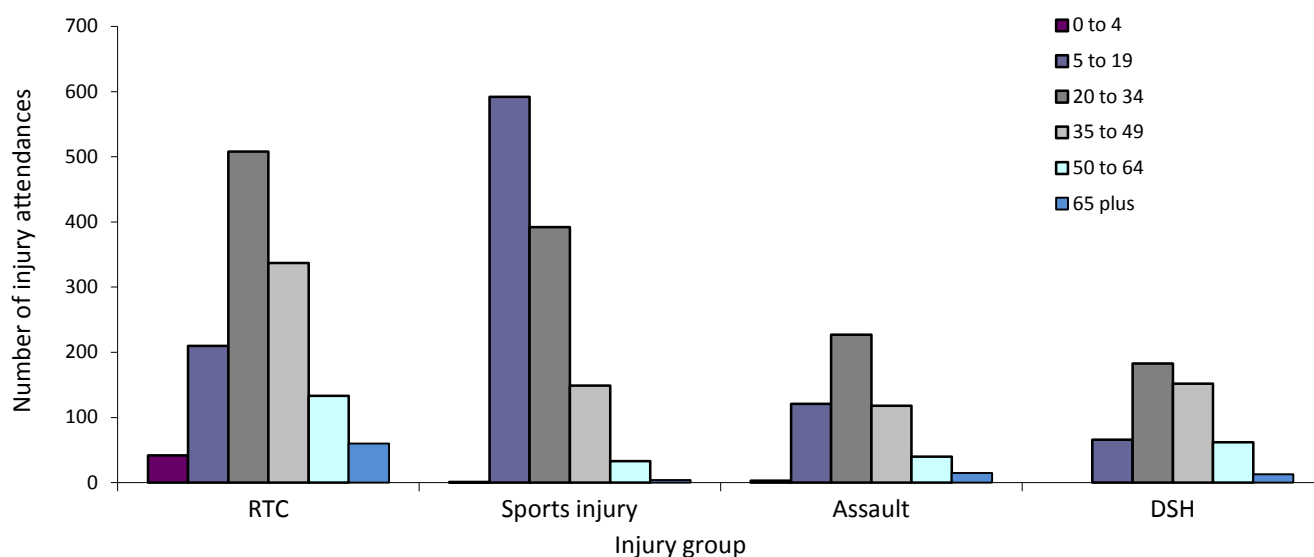


Table 2: Trafford General ED: Total injury attendances by ethnicity and month, January to December 2011¹²

Ethnicity	Jan	Feb	Mar	Apr	May	Jun	Jul	Aug	Sep	Oct	Nov	Dec	Total	%
White	3647	3435	4123	4092	4112	4311	4465	4196	4310	4278	4178	4051	49198	86
Not stated	172	108	144	134	138	142	201	154	170	154	98	107	1722	3
Pakistani	97	80	90	103	126	119	95	108	113	104	109	125	1269	2
Black	77	59	89	81	68	93	73	80	83	94	70	94	961	2
Not known	85	129	144	154	129	76	44	40	36	33	43	28	941	2
Any other ethnic group	80	86	70	81	91	80	95	71	57	57	67	72	907	2
Indian	78	54	66	70	62	76	74	65	71	88	69	86	859	2
Mixed	56	53	53	68	59	61	89	75	77	98	85	71	845	1
Asian other	19	21	15	18	23	24	34	11	20	19	26	17	247	0
Chinese	***	9	***	***	***	***	21	14	12	9	12	12	161	0
Bangladeshi	***	7	***	***	***	***	7	6	5	10	6	7	64	0
Total	4330	4041	4816	4817	4820	5001	5198	4820	4954	4944	4763	4670	57174	100

Table 3: Trafford General ED: Total injury attendances by method of disposal and month, January to December 2011^{3*}

Disposal	Jan	Feb	Mar	Apr	May	Jun	Jul	Aug	Sep	Oct	Nov	Dec	Total	%
Discharged	1702	1720	1999	1913	2039	2089	2209	2013	1995	1938	1719	1804	23140	40
Referral/ follow-up	1720	1534	1812	1665	1619	1710	1776	1723	1793	1695	1837	1593	20477	36
Admitted	642	534	599	571	570	596	577	569	557	608	625	696	7144	12
Other	266	253	406	668	592	606	636	515	609	703	582	577	6413	11
Total	4330	4041	4816	4817	4820	5001	5198	4820	4954	4944	4763	4670	57174	100

*Percentages may not add to 100 due to rounding.

¹ Please note that all numbers less than five have been suppressed in line with patient confidentiality and if there is only one number <5 in a category then two numbers will be suppressed at the next level.

² White=Irish, British, other white background; Mixed = white and black, white and Asian, mixed any other; Black=African, Caribbean, other black.

³ Admitted=admitted to hospital/became a lodged patient of the same health care provider; Discharged=discharged - did not require any follow up treatment; Referral/follow-up=discharged - follow up treatment to be provided by GP, referred to ED clinic, referred to fracture clinic, referred to other out-patient clinic, referred to other health care professional; Other=died in department, left department before being treated, left department having refused treatment, other.

Table 4: Trafford General ED: Total injury attendances by method of disposal and injury group, January to December 2011*

Disposal	Assault		DSH		Other injury		RTC		Sports injury		Total	
	n	%	n	%	n	%	n	%	n	%	n	%
Discharged	207	40	48	10	21434	40	833	65	618	53	23140	40
Referral/follow-up	156	30	88	18	19442	36	342	27	449	38	20477	36
Admitted	34	6	125	26	6950	13	***	2	***	0	7144	12
Other	127	24	215	45	5887	11	***	7	***	9	6413	11
Total	524	100	476	100	53713	100	1290	100	1171	100	57174	100

*Percentages may not total 100 due to rounding.

Table 5: Trafford General ED: Total injury attendances by mode of arrival and month, January to December 2011*

Arrival mode	Jan	Feb	Mar	Apr	May	Jun	Jul	Aug	Sep	Oct	Nov	Dec	Total	%
Other	3612	3332	4095	4074	4136	4278	4451	4068	4252	4228	4046	3844	48416	84
Ambulance	718	709	721	743	684	723	747	752	702	716	717	826	8758	15
Total	4330	4041	4816	4817	4820	5001	5198	4820	4954	4944	4763	4670	57174	100

*Percentages may not total 100 due to rounding.

Table 6: Trafford General Hospital ED: Assault attendances by gender, mode of arrival and age group, January to December 2011*

Injury type	Assault attendees (n=524)		All injuries % (n=57,174)
	n	%	%
Gender			
Female	155	30	50
Male	369	70	50
Arrival mode			
Ambulance	154	29	15
Other	370	71	84
Age group			
0 - 4	***	0	7
5 - 19	121	23	19
20 - 34	227	43	21
35 - 49	118	23	19
50 - 64	40	8	14
65 plus	***	3	20

* Percentages may not total 100 due to rounding.

Author: Ian Warren, Published: March 2012

For further information please contact: Centre for Public Health, Research Directorate, Liverpool John Moores University, 2nd Floor, Henry Cotton Building, 15-21 Webster Street, Liverpool, L3 2ET.

Tel: 0151 231 4513 or Email: i.j.warren@ljmu.ac.uk

Website: www.tiig.info (data requests should be made through the website)