

Injury attendances to Trafford General Hospital Emergency Department

October 2011 to September 2012

This report summarises recorded injury attendances to Trafford General Emergency Department (ED) between October 2011 and September 2012.

Between October 2011 and September 2012 there were 57,430 injury attendances to Trafford General ED. Females accounted for half (50%) of all injury attendances. The month with the highest injury attendances was March (n=5,124) with February (n=4,430) having the lowest attendances ([Figure 1](#)). The majority of attendances were recorded as other injury (93%). Sports injury accounted for 3% of all injury attendances, road traffic collisions (RTC) 2% ([Table 1](#)).

For all injuries the highest proportion of attendances were for persons aged 20 to 34 (21%) and 65 plus years (21%) ([Figure 2](#)). Almost four in ten (38%) RTC attendees were aged 20 to 34 years. Over two thirds (67%) of sports injury attendees were aged 5 to 19 years ([Figure 3](#)).

[Table 2](#) shows the ethnicity of attendees to Trafford General ED. Almost nine in ten (88%) were white.

The disposal of a patient can give an indication of the severity of the injuries sustained. Almost two-fifths (39%) of attendees were discharged, nearly four in ten (38%) were referred and 13% were admitted to hospital ([Table 3](#)). Six in ten (60%) of RTC attendees were discharged. Half (50%) of sports injury

attendees were discharged, while over a quarter (27%) of deliberate self-harm (DSH) attendees were admitted ([Table 4](#)).

[Table 5](#) shows the arrival methods of attendances at Trafford General ED. Over four-fifths (85%) of attendees arrived by other means, whilst 15% arrived by ambulance.

[Table 6](#) shows assault attendances to Trafford General ED. There were 546 assault attendances recorded between October 2011 and September 2012. Over seven in ten (73%) were male, and almost half (48%) were aged 20 to 34 years. Two in ten (20%) of assault attendees arrived at the ED by ambulance.

Figure 1: Trafford General ED: Total injury attendances by gender and month, October 2011 to September 2012

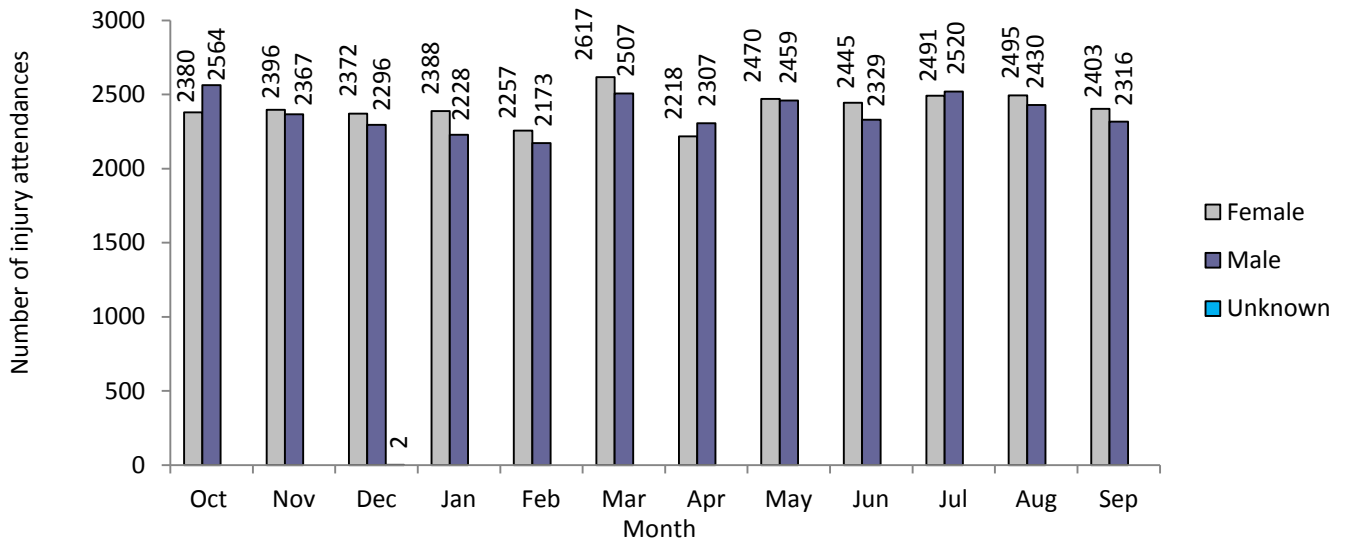


Table 1: Trafford General ED: Total injury attendances by injury group and month, October 2011 to September 2012

Injury group	Oct	Nov	Dec	Jan	Feb	Mar	Apr	May	Jun	Jul	Aug	Sep	Total	%
Other injury	4508	4412	4388	4299	4117	4725	4236	4605	4482	4718	4654	4338	53482	93
Sports injury	186	157	64	78	135	203	99	153	113	89	81	174	1532	3
RTC	138	112	131	134	95	113	112	104	96	91	106	123	1355	2
Assault	61	53	37	42	49	39	34	40	40	62	45	44	546	1
DSH	51	29	50	63	34	44	44	27	43	51	39	40	515	1
Total	4944	4763	4670	4616	4430	5124	4525	4929	4774	5011	4925	4719	57430	100

Figure 2: Trafford General ED: Total injury attendances by age group and month, October 2011 to September 2012

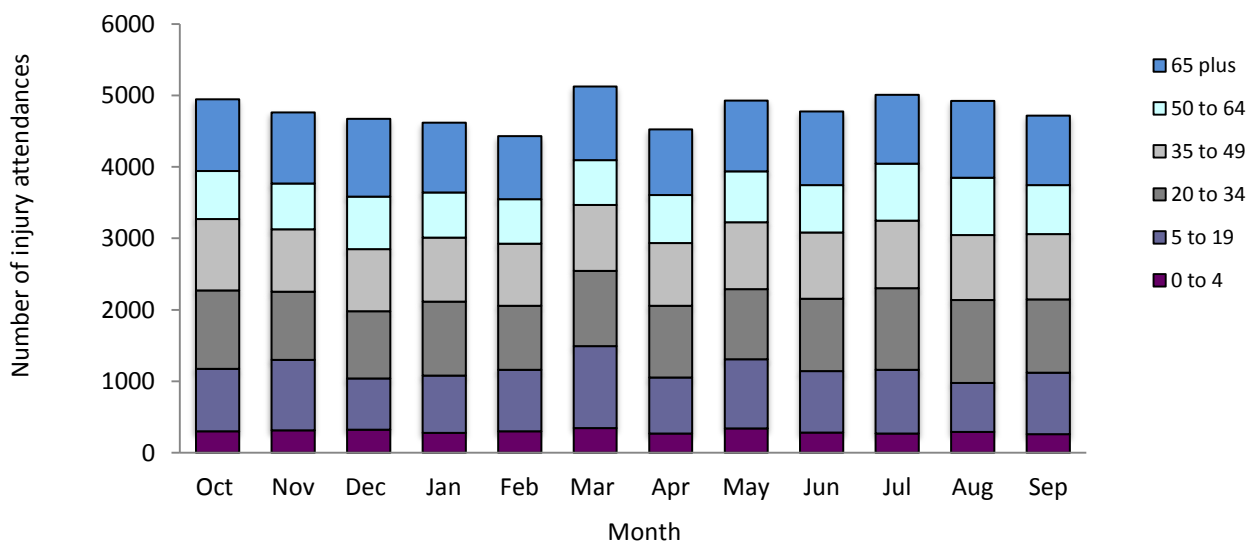


Figure 3: Trafford General ED: Total injury attendances by age group and injury group (excluding other injury), October 2011 to September 2012

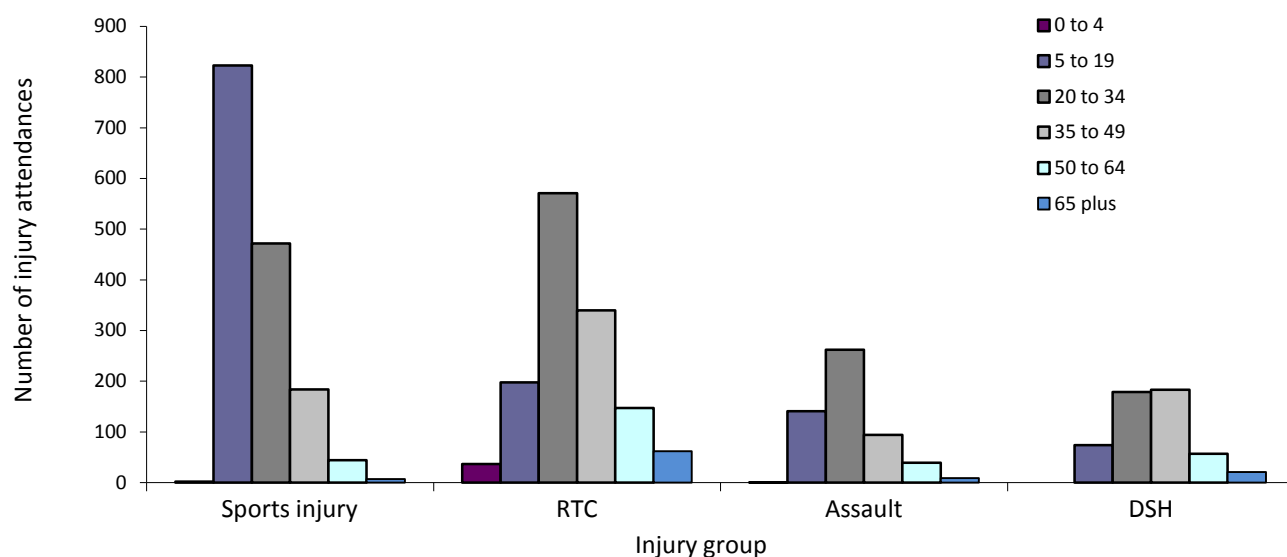


Table 2: Trafford General ED: Total injury attendances by ethnicity and month, October 2011 to September 2012^{1,2*}

Ethnicity	Oct	Nov	Dec	Jan	Feb	Mar	Apr	May	Jun	Jul	Aug	Sep	Total	%
White	4278	4178	4051	4044	3780	4479	4003	4329	4201	4454	4360	4109	50266	88
Pakistani	104	109	125	106	138	98	100	127	104	92	105	104	1312	2
Not stated	154	98	107	111	109	89	101	71	74	68	78	109	1169	2
Black	94	70	94	96	104	102	83	95	99	82	100	76	1095	2
Mixed	98	85	71	60	87	97	66	94	86	93	81	70	988	2
Indian	88	69	86	63	79	94	75	85	83	91	79	80	972	2
Any other ethnic group	57	67	72	70	58	73	59	59	77	67	71	78	808	1
Asian other	19	26	17	21	28	32	17	29	17	24	15	41	286	0
Not known	33	43	28	26	24	31	9	18	16	21	11	22	282	0
Chinese	9	12	12	13	12	23	<10	15	12	12	12	<27	167	0
Bangladeshi	10	6	7	6	11	6	***	7	5	7	13	***	85	0
Total	4944	4763	4670	4616	4430	5124	4525	4929	4774	5011	4925	4719	57430	100

*Percentages may not add to 100 due to rounding

Table 3: Trafford General ED: Total injury attendances by method of disposal and month, October 2011 to September 2012^{3*}

Disposal	Oct	Nov	Dec	Jan	Feb	Mar	Apr	May	Jun	Jul	Aug	Sep	Total	%
Discharged	1938	1719	1804	1676	1681	1904	1644	1734	1789	1944	2209	2075	22117	39
Referral/ follow-up	1695	1837	1593	1680	1570	1882	1864	2099	1995	2092	1702	1648	21657	38
Admitted	608	625	696	644	629	664	619	659	641	640	643	602	7670	13
Other	703	582	577	616	550	674	398	437	349	335	371	394	5986	10
Total	4944	4763	4670	4616	4430	5124	4525	4929	4774	5011	4925	4719	57430	100

*Percentages may not add to 100 due to rounding.

¹ Please note that all numbers less than five have been suppressed in line with patient confidentiality and if there is only one number <5 in a category then two numbers will be suppressed at the next level.

² White=Irish, British, other white background; Mixed = white and black, white and Asian, mixed any other; Black=African, Caribbean, other black.

³ Admitted=admitted to hospital/became a lodged patient of the same health care provider; Discharged=discharged - did not require any follow up treatment; Referral/follow-up=discharged - follow up treatment to be provided by GP, referred to ED clinic, referred to fracture clinic, referred to other out-patient clinic, referred to other health care professional; Other=died in department, left department before being treated, left department having refused treatment, other.

Table 4: Trafford General ED: Total injury attendances by method of disposal and injury group, October 2011 to September 2012*

Disposal	Assault		DSH		Other injury		RTC		Sports injury		Total	
	n	%	n	%	n	%	n	%	n	%	n	%
Discharged	218	40	51	10	20262	38	816	60	770	50	22117	39
Referral/ follow-up	191	35	143	28	20284	38	430	32	609	40	21657	38
Admitted	36	7	139	27	7464	14	22	2	9	1	7670	13
Other	101	18	182	35	5472	10	87	6	144	9	5986	10
Total	546	100	515	100	53482	100	1355	100	1532	100	57430	100

*Percentages may not total 100 due to rounding.

Table 5: Trafford General ED: Total injury attendances by mode of arrival and month, October 2011 to September 2012

Arrival mode	Oct	Nov	Dec	Jan	Feb	Mar	Apr	May	Jun	Jul	Aug	Sep	Total	%
Other	4228	4046	3844	3853	3728	4388	3848	4254	4142	4398	4198	4050	48977	85
Ambulance	716	717	826	763	702	736	677	675	632	613	727	669	8453	15
Total	4944	4763	4670	4616	4430	5124	4525	4929	4774	5011	4925	4719	57430	100

Table 6: Trafford General Hospital ED: Assault attendances by gender, mode of arrival and age group, October 2011 to September 2012*

Injury type	Assault attendees (n=546)		All injuries % (n=57,430)
	n	%	%
Gender			
Female	146	27	50
Male	400	73	50
Arrival mode			
Ambulance	110	20	15
Other	436	80	85
Age group			
0 - 4	***	0	6
5 - 19	141	26	18
20 - 34	262	48	21
35 - 49	94	17	19
50 - 64	39	7	14
65 plus	<10	2	21

* Percentages may not total 100 due to rounding.

Author: Johnathan Rooney, Val Upton Published: November 2012

For further information please contact: Centre for Public Health, Research Directorate, Liverpool John Moores University, 2nd Floor, Henry Cotton Building, 15-21 Webster Street, Liverpool, L3 2ET.

Tel: 0151 231 4539 or Email: j.rooney@ljmu.ac.uk

Website: www.tiig.info (data requests should be made through the website)