



TIIG

INJURY SURVEILLANCE IN THE NORTH WEST OF ENGLAND

Injury attendances to Trafford General Hospital Emergency Department

April 2012 to March 2013

This report summarises recorded injury attendances to Trafford General Emergency Department (ED) between April 2012 and March 2013.

Between April 2012 and March 2013 there were 56,139 injury attendances to Trafford General ED. Females accounted for just over half (51%) of all injury attendances. The month with the highest injury attendances was July (n=5,011) with February (n=4,270) having the lowest attendances ([Figure 1](#)). The majority of attendances were recorded as other injury (93%). Sports injury accounted for 3% of all injury attendances and road traffic collisions (RTC) 2% ([Table 1](#)).

For all injuries the highest proportion of attendances were for persons aged 20 to 34 (22%) and 65 plus years (21%) ([Figure 2](#)). Over four in ten (44%) RTC attendees were aged 20 to 34 years. Almost half (49%) of sports injury attendees were aged 5 to 19 years ([Figure 3](#)).

[Table 2](#) shows the ethnicity of attendees to Trafford General ED. Almost nine in ten (88%) were white.

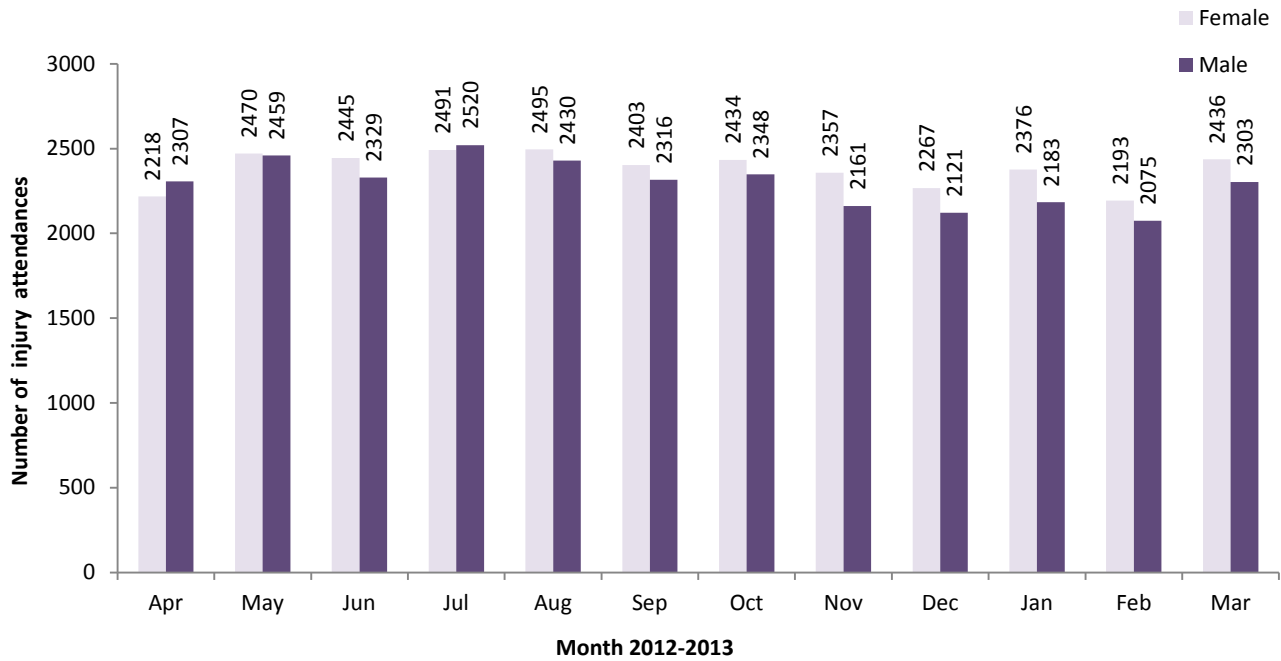
The disposal of a patient can give an indication of the severity of the injuries sustained. Almost two-fifths (39%) of attendees were discharged, over a third (36%) were referred and 14% were admitted to hospital ([Table 3](#)). Over six in ten (62%) of RTC attendees were discharged. Over half (51%) of sports

injury attendees were discharged, while almost a third (32%) of deliberate self-harm (DSH) attendees were admitted ([Table 4](#)).

[Table 5](#) shows the arrival methods of attendances at Trafford General ED. Most (86%) of attendees arrived by other means, whilst 14% arrived by ambulance.

[Table 6](#) shows assault attendances to Trafford General ED. There were 556 assault attendances recorded between April 2012 and March 2013. Seven in ten (70%) were male, and over four in ten (44%) were aged 20 to 34 years. Over two in ten (22%) of assault attendees arrived at the ED by ambulance.

Figure 1: Trafford General ED: Total injury attendances by gender and month, April 2012 to March 2013*



*There were two attendances where gender was recorded as unknown

Table 1: Trafford General ED: Total injury attendances by injury group and month, April 2012 to March 2013

Injury group	Apr	May	Jun	Jul	Aug	Sep	Oct	Nov	Dec	Jan	Feb	Mar	Total	%
Other injury	4236	4605	4482	4718	4654	4338	4434	4156	4124	4252	3955	4374	52328	93
Sports injury	99	153	113	89	81	174	166	157	74	122	151	178	1557	3
RTC	112	104	96	91	106	123	111	114	91	90	91	88	1217	2
Assault	34	40	40	62	45	44	35	46	53	51	43	63	556	1
DSH	44	27	43	51	39	40	36	45	46	44	30	36	481	1
Total	4525	4929	4774	5011	4925	4719	4782	4518	4388	4559	4270	4739	56139	100

Figure 2: Trafford General ED: Total injury attendances by age group and month, April 2012 to March 2013

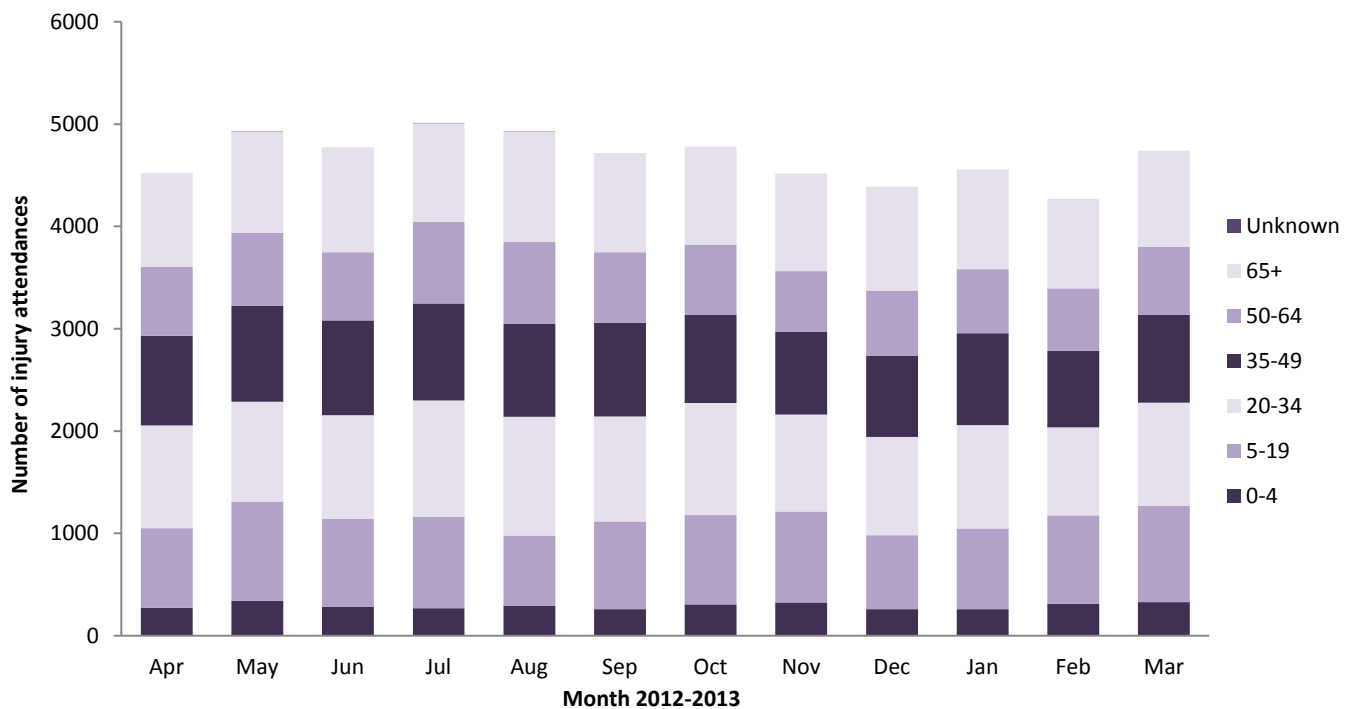


Figure 3: Trafford General ED: Total injury attendances by age group and injury group (excluding other injury), April 2012 to March 2013

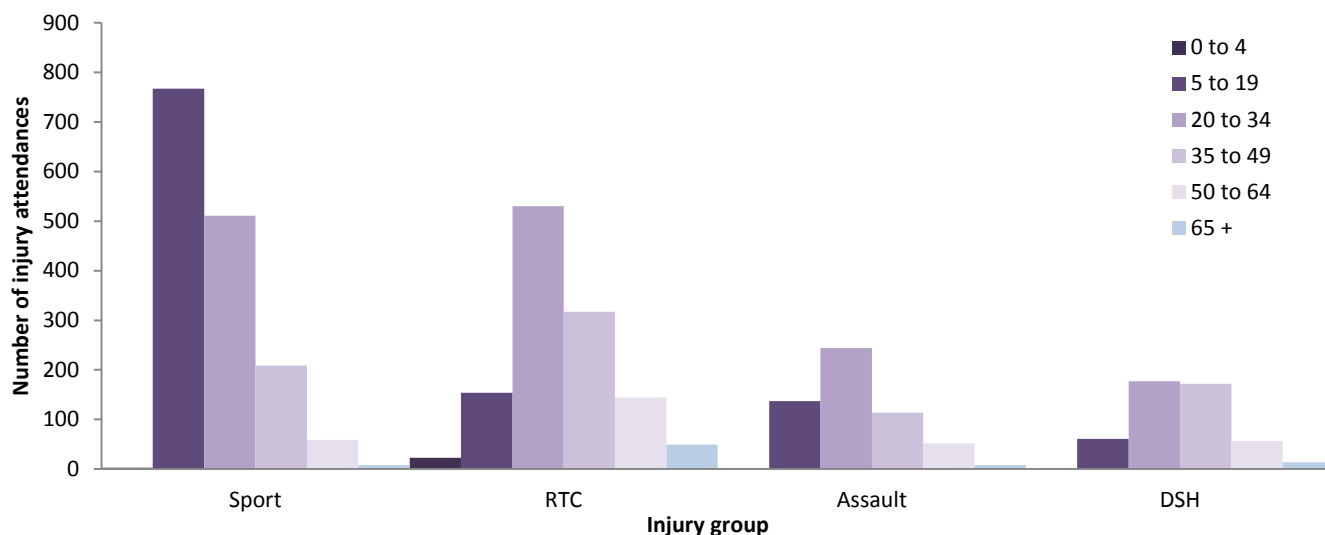


Table 2: Trafford General ED: Total injury attendances by ethnicity and month, April 2012 to March 2013^{1,2}

Ethnicity	Apr	May	Jun	Jul	Aug	Sep	Oct	Nov	Dec	Jan	Feb	Mar	Total	%
White	4003	4329	4201	4454	4360	4109	4163	3935	3816	3988	3747	4162	49267	88
Pakistani	100	127	104	92	105	104	124	125	130	138	86	116	1351	2
Black	83	95	99	82	100	76	77	91	69	72	74	80	998	2
Mixed	66	94	86	93	81	70	83	90	81	63	84	76	967	2
Not stated	101	71	74	68	78	109	88	67	72	77	71	81	957	2
Indian	75	85	83	91	79	80	87	79	82	69	78	64	952	2
Any other ethnic group	59	59	77	67	71	78	68	65	71	79	73	87	854	2
Asian other	17	29	17	24	15	41	42	30	28	33	20	34	330	1
Chinese	9	15	12	12	12	26	19	20	19	20	18	22	204	0
Not known	<10	18	16	21	11	<25	22	11	10	12	14	<15	179	0
Bangladeshi	***	7	5	7	13	***	9	5	10	8	5	***	80	0
Total	4525	4929	4774	5011	4925	4719	4782	4518	4388	4559	4270	4739	56139	100

Table 3: Trafford General ED: Total injury attendances by method of disposal and month, April 2012 to March 2013³

Disposal	Apr	May	Jun	Jul	Aug	Sep	Oct	Nov	Dec	Jan	Feb	Mar	Total	%
Discharged	1644	1734	1789	1944	2209	2075	2039	1932	1775	1612	1562	1738	22053	39
Referral/follow-up	1864	2099	1995	2092	1702	1648	1470	1361	1404	1681	1518	1593	20427	36
Admitted	619	659	641	640	643	602	614	640	661	667	619	713	7718	14
Other	398	437	349	335	371	394	659	585	548	599	571	695	5941	11
Total	4525	4929	4774	5011	4925	4719	4782	4518	4388	4559	4270	4739	56139	100

Table 4: Trafford General ED: Total injury attendances by method of disposal and injury group (excluding other injury), April 2012 to March 2013

Disposal	Assault		DSH		RTC		Sports injury		Total	
	n	%	n	%	n	%	n	%	n	%
Discharged	243	44	41	9	754	62	787	51	1825	48
Referral/follow-up	183	33	38	8	345	28	584	38	1150	30
Admitted	25	4	152	32	17	1	9	1	203	5
Other	105	19	250	52	101	8	177	11	633	17
Total	556	100	481	100	1217	100	1557	100	3811	100

¹ Please note that all numbers less than five have been suppressed in line with patient confidentiality and if there is only one number <5 in a category then two numbers will be suppressed at the next level.

² White=Irish, British, other white background; Mixed = white and black, white and Asian, mixed any other; Black=African, Caribbean, other black.

³ Admitted=admitted to hospital/became a lodged patient of the same health care provider; Discharged=discharged - did not require any follow up treatment; Referral/follow-up=discharged - follow up treatment to be provided by GP, referred to ED clinic, referred to fracture clinic, referred to other out-patient clinic, referred to other health care professional; Other=died in department, left department before being treated, left department having refused treatment, other.

Table 5: Trafford General ED: Total injury attendances by mode of arrival and month, April 2012 to March 2013

Arrival mode	Apr	May	Jun	Jul	Aug	Sep	Oct	Nov	Dec	Jan	Feb	Mar	Total	%
Other	3848	4254	4142	4398	4198	4050	4090	3825	3660	3821	3681	4033	48000	86
Ambulance	677	675	632	613	727	669	692	693	728	738	589	706	8139	14
Total	4525	4929	4774	5011	4925	4719	4782	4518	4388	4559	4270	4739	56139	100

Table 6: Trafford General Hospital ED: Assault attendances by gender, mode of arrival and age group, April 2012 to March 2013¹

Injury type	Assault attendees (n=556)		All injuries % (n=56,139)
Gender	n	%	%
Female	167	30	51
Male	389	70	49
Arrival mode			
Ambulance	122	22	14
Other	434	78	86
Age group			
0 - 4	***	0	6
5 - 19	137	25	18
20 - 34	244	44	22
35 - 49	114	21	19
50 - 64	52	9	15
65 plus	<10	1	21

Published August 2013

Jennifer Brizell (TIIG researcher)

Centre for Public Health, Faculty of Education, Health & Community, Liverpool John Moores University

2nd Floor, Henry Cotton Campus, 15-21 Webster Street, Liverpool, L3 2ET

Tel: 0151 231 4500 Email: j.s.brizell@ljmu.ac.uk

Website: www.tiig.info (please note all data requests should be made through the TIIG website)

¹ Please note that all numbers less than five have been suppressed in line with patient confidentiality and if there is only one number <5 in a category then two numbers will be suppressed at the next level.