

**TIIG**  
INJURY SURVEILLANCE IN THE NORTH WEST OF ENGLAND

**WYTHENSHAWE HOSPITAL EMERGENCY DEPARTMENT**

**MONTHLY BULLETIN: OCTOBER 2013 TO SEPTEMBER 2014**

This bulletin provides a breakdown of all injury attendances to Wythenshawe Hospital Emergency Department (ED) between October 2013 and September 2014.

During this twelve month period there were 14,641 injury attendances to the ED. The month with the highest number of attendances, calculated as a daily average, was July 2014 (45 per day) with March 2014 having the lowest attendances (33 per day; **Figure 1**).

Males accounted for over half (52%) of all attendances (**Figure 1**) and the highest proportion of attendances were for those aged between 20 and 34 years (23%) and between 5 and 19 years (20%; **Figure 2**).

Falls accounted for the highest proportion of injuries (50%), followed by sports injury (15%), road traffic collisions (RTCs; 14%) and bites and stings (7%; **Table 1**).

Close to four in ten (38%) fall attendees were aged 65 years or over, approximately four in ten sports injury attendees were aged between five and 19 years (39%) or between 20 and 34 years (38%) and close to four in ten (38%) RTC attendees were aged between 20 and 34 years (**Figure 3**).

**Table 2** shows the ethnicity of injury attendees to Wythenshawe Hospital ED. The large majority (89%) were White.

The disposal of a patient can give an indication of the severity of the injuries sustained. Over six in ten (62%) attendees were discharged, 18% were admitted to hospital and 17% were referred for further treatment (**Table 3**). Over four-fifths (82%) of RTC attendees were discharged, over a third (36%) of burns and scald attendees were referred for follow-up treatment and nearly four in ten (38%) deliberate self-harm (DSH) attendees were admitted to hospital (**Table 4**).

**Table 5** shows the arrival method of attendances to Wythenshawe Hospital ED. Three in ten (30%) attendees arrived by ambulance.

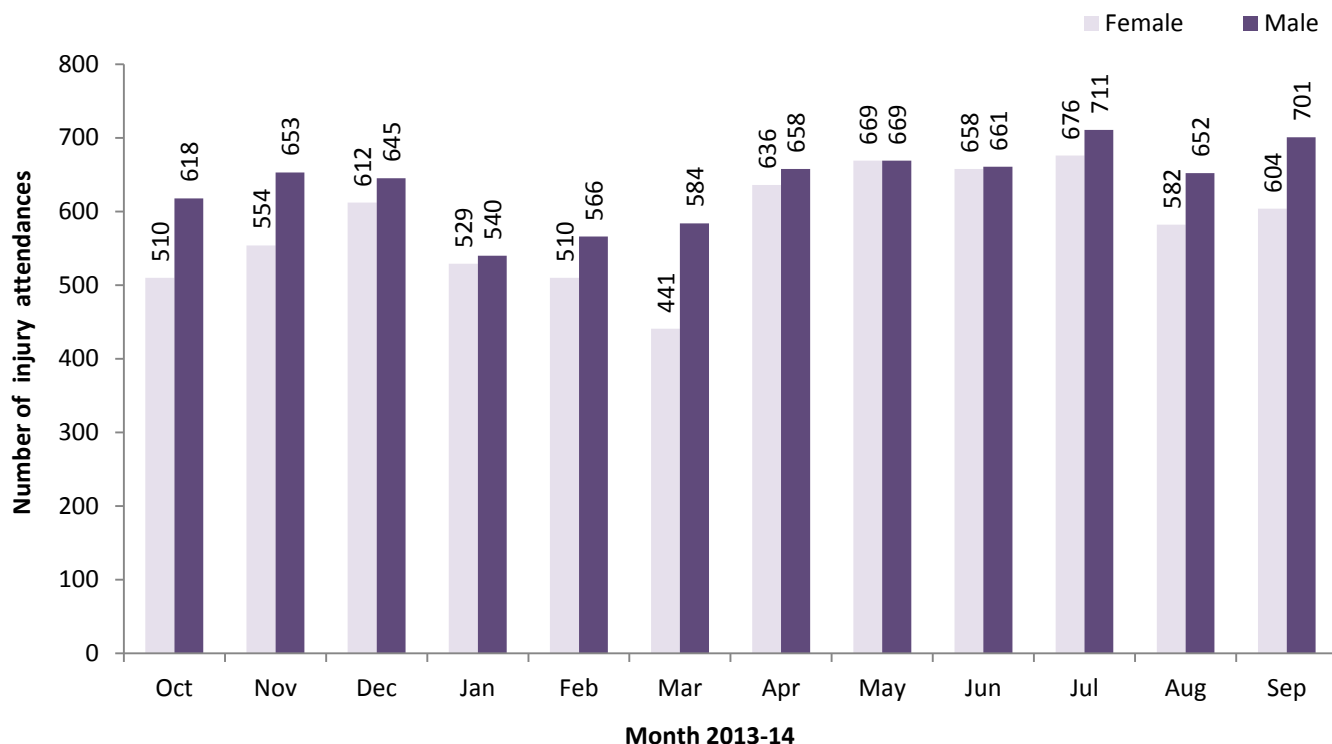
**Table 6** shows the incident location of injury attendances. Close to four in ten (38%) occurred in the home whilst 18% occurred at a sports venue.

**Assault attendances**

Between October 2013 and September 2014 there were 659 assault-related injury attendances to Wythenshawe Hospital ED.

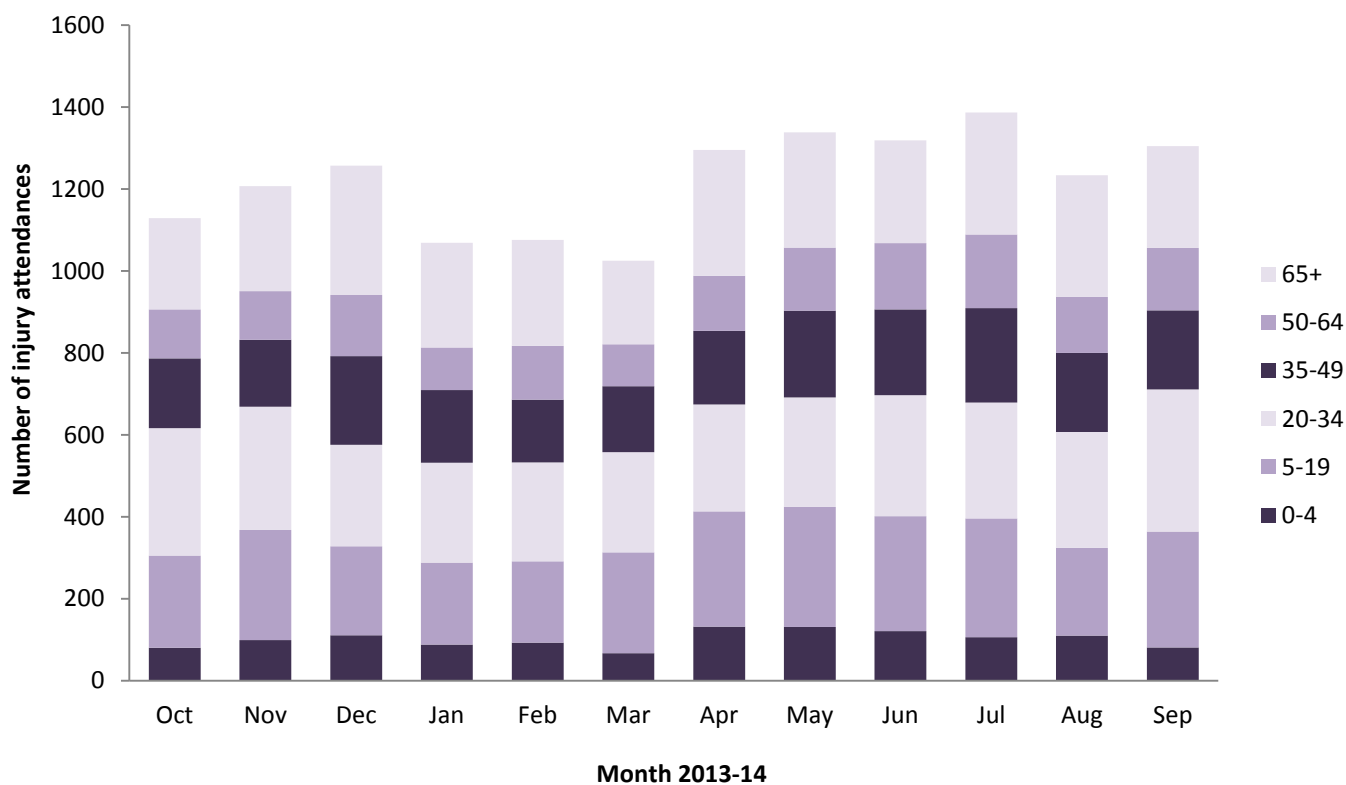
Close to seven in ten (69%) were male and 46% were aged between 20 and 34 years. Almost a third (32%) arrived at the ED by ambulance (**Table 7**).

Figure 1: ED injury attendances by gender and month, October 2013 to September 2014<sup>^</sup>



<sup>^</sup> There were <5 records where the gender was unknown; these have been omitted from the chart.

Figure 2: ED injury attendances by age group and month, October 2013 to September 2014<sup>§</sup>

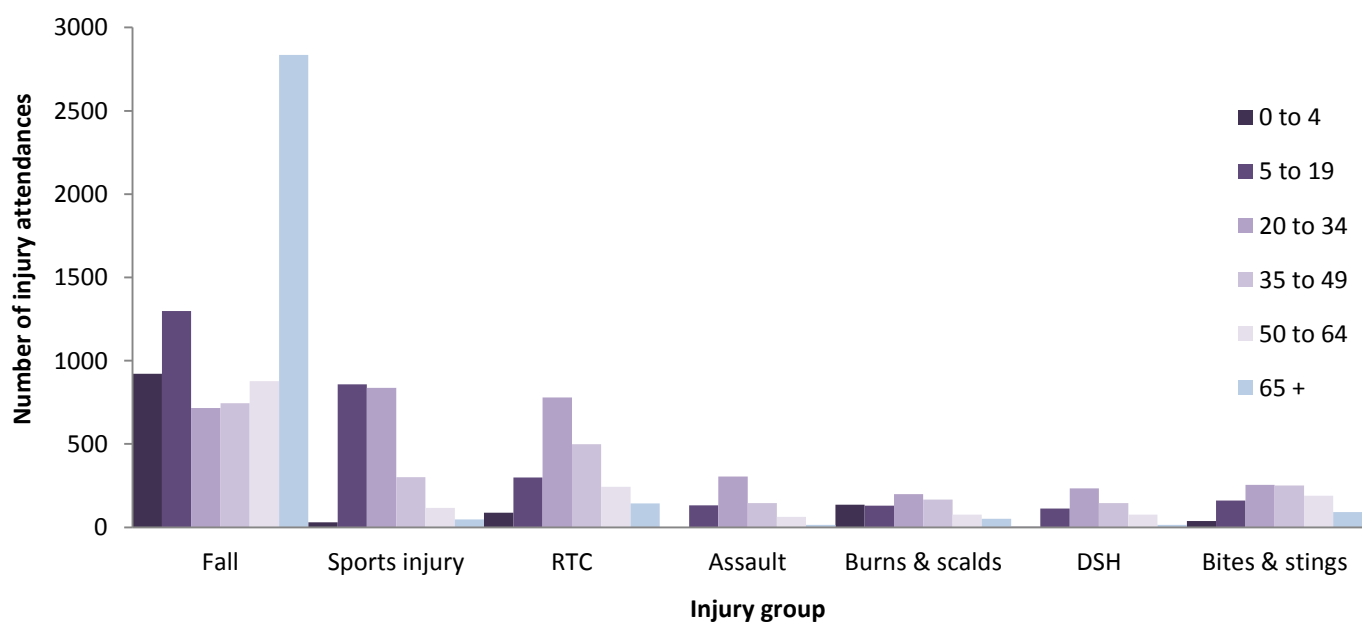


<sup>§</sup> There were <5 records where the age was unknown; these have been omitted from the chart.

**Table 1: ED injury attendances by injury group and month, October 2013 to September 2014<sup>1</sup>**

Injury group	Oct	Nov	Dec	Jan	Feb	Mar	Apr	May	Jun	Jul	Aug	Sep	Total	%
Fall	492	579	701	522	559	430	718	738	713	686	641	614	7393	50
Sports injury	200	200	144	150	169	249	184	181	148	168	161	237	2191	15
RTC	222	195	156	159	130	168	145	193	189	181	152	161	2051	14
Bites & stings	66	59	74	47	56	40	76	72	121	171	104	98	984	7
Burns & scalds	46	59	79	79	53	63	66	73	54	74	52	62	760	5
Assault	61	64	71	52	58	45	61	60	45	50	49	43	659	5
DSH	<45	51	32	<60	51	<30	<45	<25	<50	<60	<75	<90	587	4
Other injury	***	0	0	***	0	***	***	***	***	***	***	***	16	0
<b>Total</b>	<b>1129</b>	<b>1207</b>	<b>1257</b>	<b>1069</b>	<b>1076</b>	<b>1025</b>	<b>1295</b>	<b>1338</b>	<b>1319</b>	<b>1387</b>	<b>1234</b>	<b>1305</b>	<b>14641</b>	<b>100</b>

**Figure 3: ED injury attendances by age group and injury group (excluding other injury), October 2013 to September 2014**



**Table 2: ED injury attendances by ethnicity and month, October 2013 to September 2014<sup>1,2</sup>**

Ethnicity	Oct	Nov	Dec	Jan	Feb	Mar	Apr	May	Jun	Jul	Aug	Sep	Total	%
White	976	1072	1115	936	976	908	1152	1157	1174	1226	1112	1187	12991	89
Pakistani	40	34	36	35	30	29	29	37	23	45	33	22	393	3
Not stated	26	33	28	14	23	16	21	42	27	24	21	26	301	2
Black	27	18	24	27	13	18	31	32	24	24	26	24	288	2
Indian	22	9	17	13	7	20	25	22	21	19	18	17	210	1
Mixed	16	16	17	16	7	9	15	21	23	24	7	6	177	1
Any other ethnic group	11	11	12	11	9	14	9	10	16	11	6	16	136	1
Asian other	7	7	<10	10	***	8	9	10	7	<15	***	***	86	1
Not known	***	***	0	***	7	***	***	<10	***	***	6	***	44	0
Chinese	***	***	***	***	***	***	***	***	***	0	***	0	15	0
<b>Total</b>	<b>1129</b>	<b>1207</b>	<b>1257</b>	<b>1069</b>	<b>1076</b>	<b>1025</b>	<b>1295</b>	<b>1338</b>	<b>1319</b>	<b>1387</b>	<b>1234</b>	<b>1305</b>	<b>14641</b>	<b>100</b>

<sup>1</sup> Please note that for all tables, all numbers less than five have been suppressed (with \*\*\*) in line with patient confidentiality. If there is only one number less than five in a category then two numbers will be suppressed to prevent back calculation from totals.

<sup>2</sup> White = Irish, British, other White background; Mixed = White and Black, White and Asian, mixed - any other; Black = African, Caribbean, other Black.

**Table 3: ED injury attendances by disposal method and month, October 2013 to September 2014<sup>3</sup>**

Disposal method	Oct	Nov	Dec	Jan	Feb	Mar	Apr	May	Jun	Jul	Aug	Sep	Total	%
Discharged	694	746	738	630	661	666	800	860	823	873	758	774	9023	62
Admitted	193	222	282	207	214	172	248	214	226	233	218	257	2686	18
Referral/follow-up	213	208	198	207	179	164	220	230	231	235	207	251	2543	17
Other	29	31	39	25	22	23	27	34	39	46	51	23	389	3
<b>Total</b>	<b>1129</b>	<b>1207</b>	<b>1257</b>	<b>1069</b>	<b>1076</b>	<b>1025</b>	<b>1295</b>	<b>1338</b>	<b>1319</b>	<b>1387</b>	<b>1234</b>	<b>1305</b>	<b>14641</b>	<b>100</b>

**Table 4: ED injury attendances by disposal method and injury group (excluding other injury), October 2013 to September 2014<sup>3</sup>**

Disposal method	Assault		Burns & scalds		DSH		Fall		RTC		Sports injury		Total	
	n	%	n	%	n	%	n	%	n	%	n	%	n	%
Discharged	401	61	392	52	235	40	4148	56	1685	82	1446	66	8307	61
Admitted	124	19	79	10	225	38	1808	24	182	9	109	5	2527	19
Referral/follow-up	95	14	272	36	79	13	1303	18	110	5	576	26	2435	18
Other	39	6	17	2	48	8	134	2	74	4	60	3	372	3
<b>Total</b>	<b>659</b>	<b>100</b>	<b>760</b>	<b>100</b>	<b>587</b>	<b>100</b>	<b>7393</b>	<b>100</b>	<b>2051</b>	<b>100</b>	<b>2191</b>	<b>100</b>	<b>13641</b>	<b>100</b>

**Table 5: ED injury attendances by mode of arrival and month, October 2013 to September 2014**

Arrival mode	Oct	Nov	Dec	Jan	Feb	Mar	Apr	May	Jun	Jul	Aug	Sep	Total	%
Not known	799	872	841	697	720	734	880	1004	975	1003	822	937	10284	70
Ambulance	330	335	416	372	356	291	415	334	344	384	412	368	4357	30
<b>Total</b>	<b>1129</b>	<b>1207</b>	<b>1257</b>	<b>1069</b>	<b>1076</b>	<b>1025</b>	<b>1295</b>	<b>1338</b>	<b>1319</b>	<b>1387</b>	<b>1234</b>	<b>1305</b>	<b>14641</b>	<b>100</b>

**Table 6: ED injury attendances by incident location and injury group (excluding other injury), October 2013 to September 2014<sup>1</sup>**

Incident location	Assault		Burns & scalds		DSH		Fall		RTC		Sports injury		Total	
	n	%	n	%	n	%	n	%	n	%	n	%	n	%
Home	219	33	404	53	320	55	4219	57	0	0	0	0	5162	38
Sport	11	2	7	1	***	0	<275	4	0	0	2191	100	2482	18
RTC	***	0	5	1	***	0	51	1	2051	100	0	0	2111	15
Not recorded	153	23	195	26	206	35	1365	18	0	0	0	0	1919	14
Public place	116	18	30	4	28	5	637	9	0	0	0	0	811	6
Street	<70	10	0	0	***	1	233	3	0	0	0	0	302	2
School/college	18	3	9	1	10	2	303	4	0	0	0	0	340	2
Work	42	6	94	12	0	0	148	2	0	0	0	0	284	2
Another's home	25	4	16	2	14	2	152	2	0	0	0	0	207	2
Bar/Pub	8	1	0	0	***	0	<15	0	0	0	0	0	<25	0
Club	0	0	0	0	0	0	***	0	0	0	0	0	***	0
<b>Total</b>	<b>659</b>	<b>100</b>	<b>760</b>	<b>100</b>	<b>587</b>	<b>100</b>	<b>7393</b>	<b>100</b>	<b>2051</b>	<b>100</b>	<b>2191</b>	<b>100</b>	<b>13641</b>	<b>100</b>

<sup>3</sup> Admitted = admitted to ED bed/became a lodged patient of the same health care provider; Discharged = discharged - did not require any follow-up treatment; Referral/follow-up = discharged - follow-up treatment to be provided by GP, referred to ED clinic, referred to fracture clinic, referred to other out-patient clinic, transferred to other health care provider, referred to other health care professional; Other = died in department, left department before being treated, left department having refused treatment, other.

## ASSAULTS

**Table 7: ED assault attendances by gender, arrival mode and age group, October 2013 to September 2014<sup>1</sup>**

	Assault attendances (n=659)		All injury attendances (n=14,641)
	n	%	%
<b>Gender</b>			
Male	454	69	52
Female	205	31	48
<b>Arrival mode</b>			
Other	446	68	70
Ambulance	213	32	30
<b>Age group</b>			
0 - 4	***	0	8
5 - 19	132	20	20
20 - 34	304	46	23
35 - 49	145	22	15
50 - 64	62	9	11
65 plus	<15	2	22

Published January 2015

Trauma and Injury Intelligence Group

Centre for Public Health, Faculty of Education, Health and Community, Liverpool John Moores University,  
2nd Floor, Henry Cotton Building, Liverpool L3 2ET

T: 0151 231 4498 | E: [tiig@ljmu.ac.uk](mailto:tiig@ljmu.ac.uk) | W: [www.tiig.info](http://www.tiig.info) and [www.cph.org.uk](http://www.cph.org.uk) | Twitter: [www.twitter.com/tiig\\_cph](https://twitter.com/tiig_cph)