

Injury attendances to Wythenshawe Hospital Emergency Department

April 2009 to March 2010

This report summarises recorded injury attendances to Wythenshawe Hospital Emergency Department (ED) between April 2009 and March 2010.

Between April 2009 and March 2010 there were 38,533 injury attendances to Wythenshawe Hospital ED. Males accounted for over half of all attendances (n=20,835; 54%). The month with the highest attendances was June (n=3,495) with February having the lowest attendances (n=2,717) (Figure 1). The majority of attendances were recorded as other (82%); falls accounted for the highest proportion (8%) of specified injury groups followed by road traffic collision (RTC) (5%), sports injury (2%) and assault (2%) (Table 1).

For all injuries the highest proportion of attendances were for persons aged 20-34 (24%) and 5-19 (22%) (Figure 2). Over a quarter (27%) of fall attendees were aged 65 or over. Nearly half (45%) of assault attendees were aged 20-34. Over two-fifths (41%) of RTC attendees were aged 20-34 (Figure 3).

Table 2 shows the ethnicity of injury attendees to Wythenshawe Hospital ED. The large majority (85%) were white.

The disposal of a patient can give an indication of the severity of the injuries sustained. Six in ten (60%) of attendees were discharged, 17% were referred and 15% were admitted to hospital (Table 3). Over four-

fifths (81%) of RTC attendees were discharged. Seven in ten (70%) of assault attendees were discharged. Over a third (36%) of deliberate self-harm (DSH) attendees were admitted. (Table 4).

Table 5 shows the arrival methods of attendances at Wythenshawe Hospital ED. Over four-fifths (81%) arrived by ambulance.

Table 6 shows the incident location of injury attendances. For over three-quarters (76%) of attendances the incident location was not recorded. Of the other incident locations recorded the largest proportion occurred in the home (14%) followed by RTC (5%).

Figure 4 (a-d) shows crude rates of attendance at Wythenshawe Hospital ED by attendee's area of residence, in this case Middle Super Output Area (MSOA). The MSOAs with the highest crude rates are indicated beneath each figure.¹

¹ Population figures are drawn from mid-2008 population estimates from the Office for National Statistics.

Figure 1: Wythenshawe Hospital ED: Total injury attendances by gender and month, April 2009 to March 2010

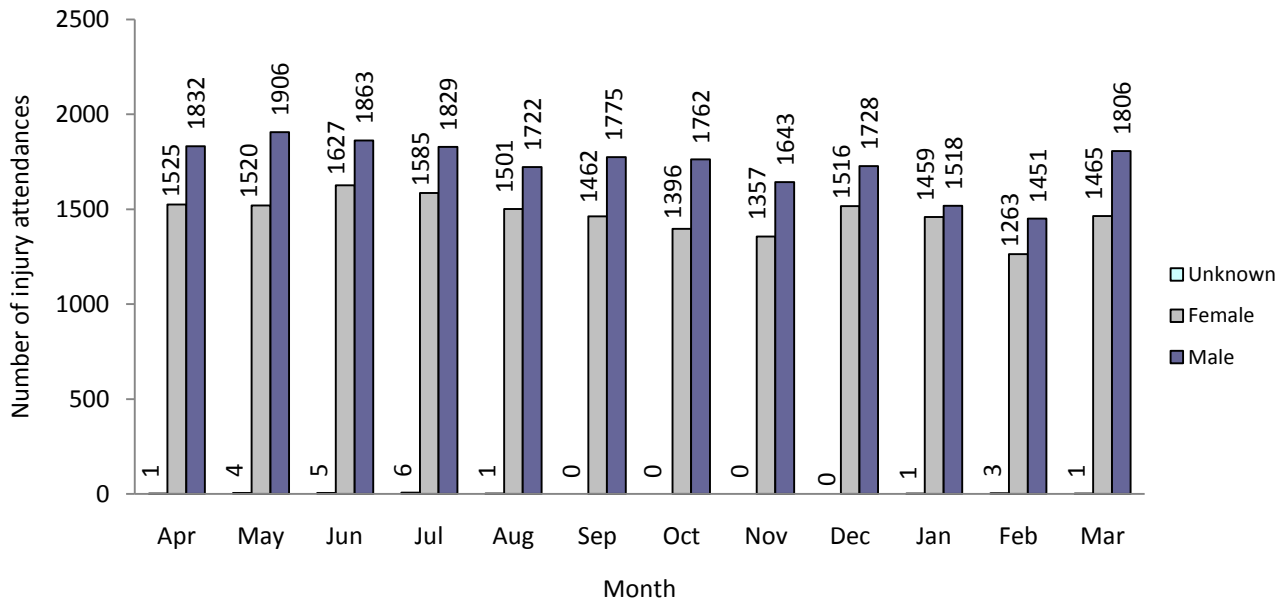


Table 1: Wythenshawe Hospital ED: Total injury attendances by injury group and month, April 2009 to March 2010

Injury group	Apr	May	Jun	Jul	Aug	Sep	Oct	Nov	Dec	Jan	Feb	Mar	Total	%
Other	2811	2802	3020	3027	2812	2767	2674	2420	2492	2209	2107	2543	31683	82
Fall	148	150	155	153	184	234	226	289	477	486	261	343	3106	8
RTC	147	206	174	175	153	151	144	176	161	136	141	159	1923	5
Sports injury	212	215	100	6	14	6	5	3	22	56	112	129	880	2
Assault	25	41	29	29	36	52	69	72	60	60	63	62	598	2
Burn/scald	9	***	***	20	***	***	31	30	24	24	27	26	266	1
DSH	6	***	***	10	***	***	9	10	8	7	6	10	77	0
Total	3358	3430	3495	3420	3224	3237	3158	3000	3244	2978	2717	3272	38533	100

Figure 2: Wythenshawe Hospital ED: Total injury attendances by age group and month, April 2009 to March 2010

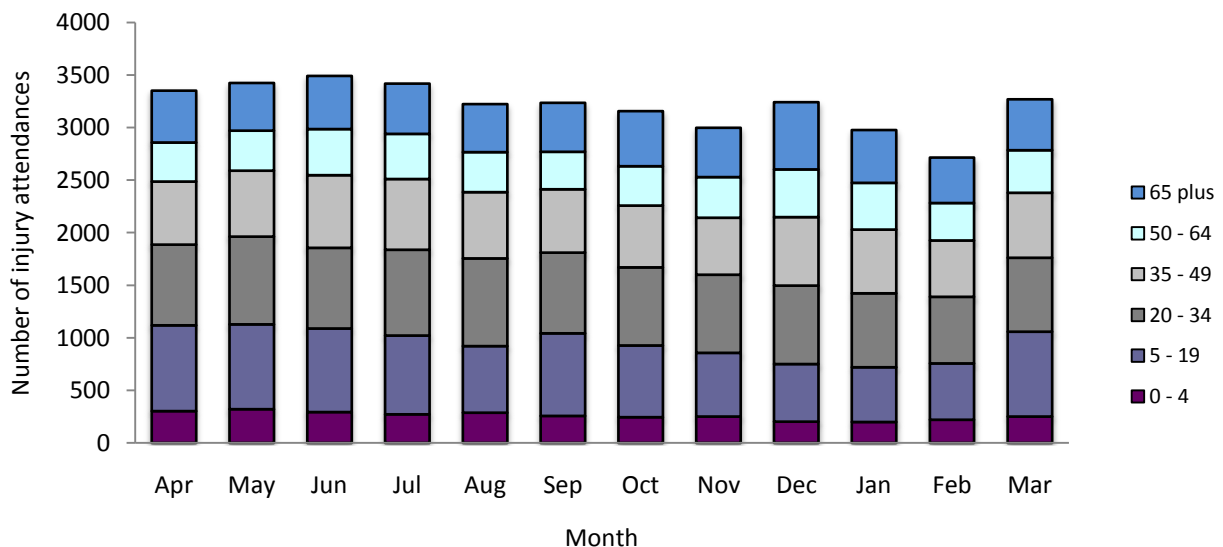


Figure 3: Wythenshawe Hospital ED: Total injury attendances by age group and injury group, April 2009 to March 2010

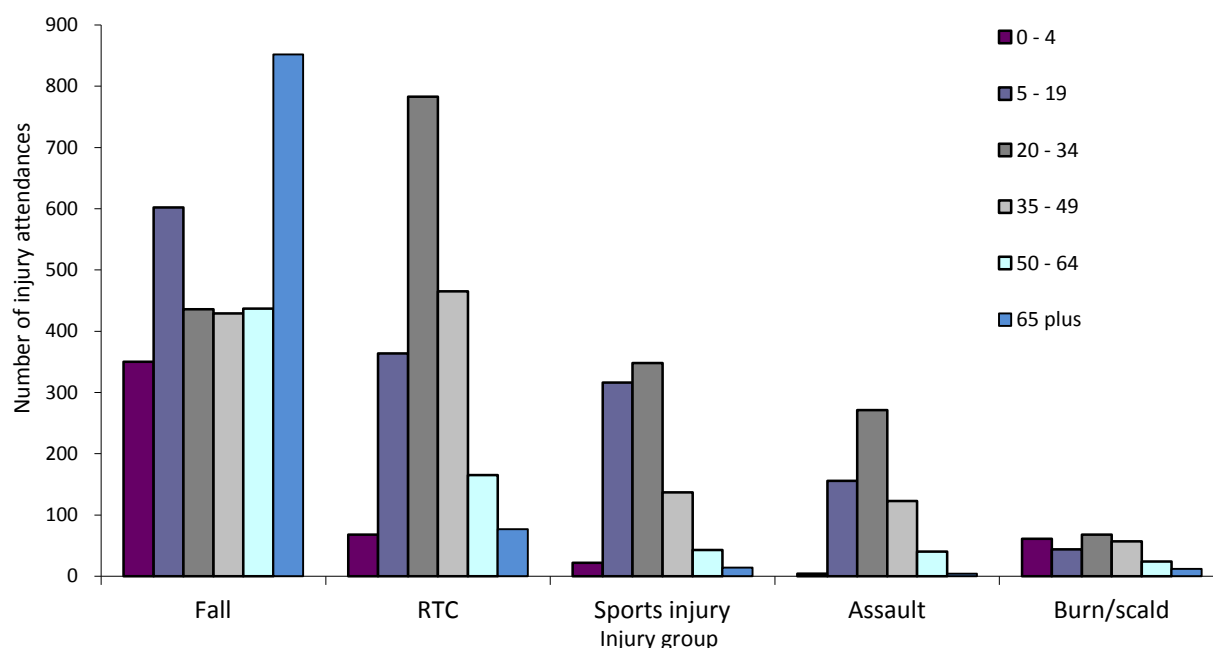


Table 2: Wythenshawe Hospital ED: Total injury attendances by ethnicity and month, April 2009 to March 2010²

Ethnic group	Apr	May	Jun	Jul	Aug	Sep	Oct	Nov	Dec	Jan	Feb	Mar	Total	%
White	2825	2936	2987	2907	2738	2740	2675	2541	2766	2547	2333	2828	32823	85
Not known	358	305	273	312	306	308	309	292	311	272	246	241	3533	9
Pakistani	49	60	66	54	64	57	35	54	47	39	33	63	621	2
Other ethnic group	29	39	35	38	28	27	22	29	27	36	39	38	387	1
Black	30	32	46	46	13	28	44	30	29	28	24	35	385	1
Mixed	24	25	45	26	31	37	39	29	32	26	19	33	366	1
Indian	29	25	32	25	31	29	15	14	20	24	15	24	283	1
Chinese	***	***	***	7	***	6	***	***	7	***	***	***	103	0
Bangladeshi	***	***	***	5	***	5	***	***	5	***	***	***	32	0
Total	3358	3430	3495	3420	3224	3237	3158	3000	3244	2978	2717	3272	38533	100

Table 3: Wythenshawe Hospital ED: Total injury attendances by method of disposal and month, April 2009 to March 2010³

Disposal	Apr	May	Jun	Jul	Aug	Sep	Oct	Nov	Dec	Jan	Feb	Mar	Total	%
Discharged	1989	2166	2061	2099	1933	1997	1974	1837	1886	1776	1585	1978	23281	60
Referred	579	532	599	571	507	546	547	483	635	590	498	656	6743	17
Admitted	508	507	497	448	501	507	472	491	552	496	456	477	5912	15
Other	282	225	338	302	283	187	165	189	171	116	178	161	2597	7
Total	3358	3430	3495	3420	3224	3237	3158	3000	3244	2978	2717	3272	38533	100

² White = Irish, British, other white background; Mixed = white and black, white and Asian, mixed any other; Other = any other ethnic group, any other Asian background; Black = African, Caribbean, other black.

³ Admitted=admitted to ED bed/became a lodged patient of the same health care provider; Discharged=discharged - did not require any follow up treatment; Referral/follow up =discharged - follow up treatment to be provided by GP, referred to ED clinic, referred to fracture clinic, referred to other out-patient clinic, transferred to other health care provider, referred to other health care professional; Other=died in department, left department before being treated, left department having refused treatment, other.

Table 4: Wythenshawe Hospital ED: Total injury attendances by method of disposal and injury group, April 2009 to March 2010

Disposal	Assault		Burn/scald		DSH		Fall		Other		RTC		Sports injury		Total	
	n	%	n	%	n	%	n	%	n	%	n	%	n	%	n	%
Discharged	418	70	133	50	39	51	1822	59	18767	59	1554	81	548	62	23281	60
Admitted	64	11	19	7	28	36	585	19	5052	16	114	6	50	6	5912	15
Referred	85	14	105	39	9	12	635	20	5550	18	116	6	243	28	6743	17
Other	31	5	9	3	1	1	64	2	2314	7	139	7	39	4	2597	7
Total	598	100	266	100	77	100	3106	100	31684	100	1923	100	880	100	38533	100

Table 5: Wythenshawe Hospital ED: Total injury attendances by mode of arrival and month, April 2009 to March 2010

Mode	Apr	May	Jun	Jul	Aug	Sep	Oct	Nov	Dec	Jan	Feb	Mar	Total	%
Not known	2778	2854	2889	2789	2597	2622	2581	2341	2541	2386	2137	2643	31158	81
Ambulance	580	576	606	631	627	615	577	659	703	592	580	629	7375	19
Total	3358	3430	3495	3420	3224	3237	3158	3000	3244	2978	2717	3272	38533	100

Table 6: Wythenshawe Hospital ED: Total injury attendances by injury location and month, April 2009 to March 2010

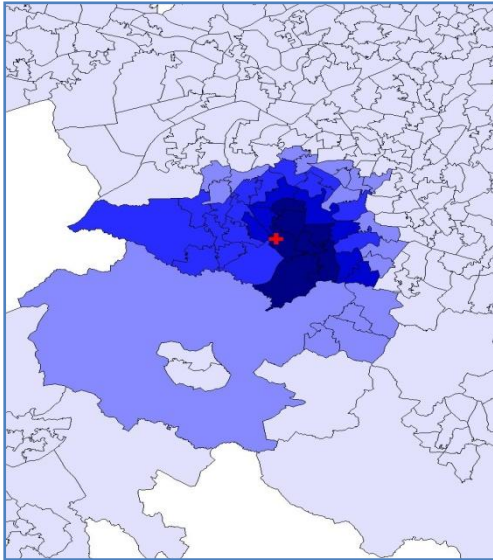
Location	Apr	May	Jun	Jul	Aug	Sep	Oct	Nov	Dec	Jan	Feb	Mar	Total	%
Not recorded	1894	1860	2613	3175	3031	3056	2990	2794	2728	1899	1395	1744	29179	76
Home	919	946	521	56	22	20	17	20	302	815	735	841	5214	14
RTC (Road)	147	208	174	176	153	151	144	178	162	137	142	159	1931	5
Sports injury	219	221	105	6	***	***	***	***	30	63	122	140	935	2
Work	179	195	82	7	***	***	***	***	22	64	92	87	742	2
Public place	0	0	0	0	0	0	0	0	0	0	168	160	328	1
School	0	0	0	0	0	0	0	0	0	0	63	141	204	1
Total	3358	3430	3495	3420	3224	3237	3158	3000	3244	2978	2717	3272	38533	100

For further information please contact: Centre for Public Health, Research Directorate, Liverpool John Moores University, 3rd Floor, Henry Cotton Building, 15-21 Webster Street, Liverpool, L3 2ET, Tel: 0151 231 4513 or Email: i.j.warren@ljmu.ac.uk
 Website: www.tiig.info (data requests should be made through the website)

Figure 4a,b,c,d: Middle Super Output Area of residence for injury attendances to Wythenshawe Hospital ED. Quintiles of crude rates per 1,000 population, April 2009 to March 2010

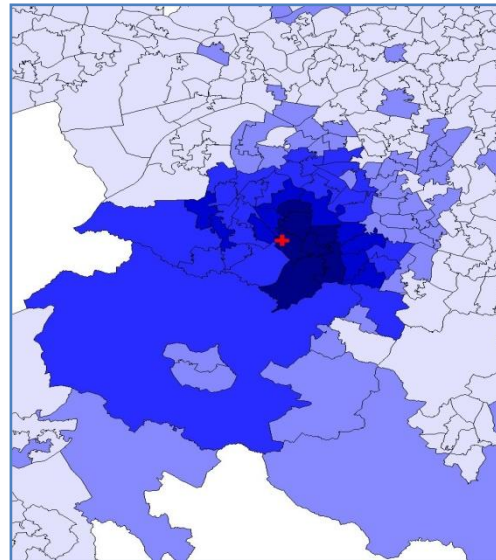
a) All injury attendances: quintiles of crude rates per 1,000 population b) Fall: quintiles of crude rates per 1,000 population

+ Wythenshawe Hospital ED



1	(0.00 – 17.58)	MSOA E02001095 (242.77)
2	(17.59 – 52.53)	MSOA E02001094 (236.62)
3	(52.54 – 92.29)	MSOA E02001092 (234.03)
4	(92.30 – 162.27)	MSOA E02001093 (220.93)
5	(162.28 – 242.77)	

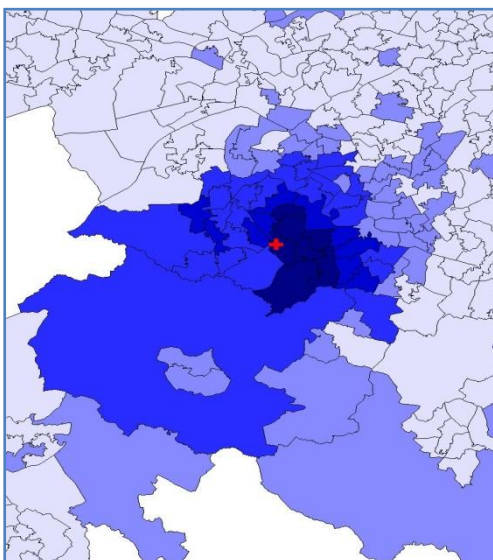
+ Wythenshawe Hospital ED



1	(0.00 – 0.45)	MSOA E02001093 (22.05)
2	(0.46 – 1.82)	MSOA E02001095 (17.21)
3	(1.83 – 4.61)	MSOA E02001094 (17.02)
4	(4.62 – 10.86)	MSOA E02001097 (16.76)
5	(10.87 – 22.05)	

c) RTC: quintiles of crude rates per 1,000 population

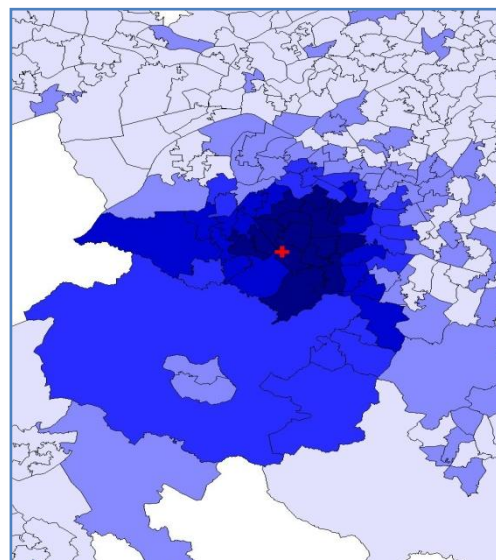
+ Wythenshawe Hospital ED



1	(0.00 – 0.31)	MSOA E02001092 (13.29)
2	(0.32 – 1.13)	MSOA E02001088 (10.80)
3	(1.14 – 3.51)	MSOA E02001093 (10.17)
4	(3.52 – 7.28)	MSOA E02001095 (9.92)
5	(7.29 – 13.29)	

d) Sports injury: quintiles of crude rates per 1,000 population

+ Wythenshawe Hospital ED



1	(0.00 – 0.11)	MSOA E02001096 (3.73)
2	(0.12 – 0.54)	MSOA E02001097 (3.71)
3	(0.55 – 1.43)	MSOA E02001088 (3.52)
4	(1.44 – 2.43)	MSOA E02001093 (3.43)
5	(2.44 – 3.73)	