

Injury attendances to Wythenshawe Hospital Emergency Department

October 2010 to September 2011

This report summarises recorded injury attendances to Wythenshawe Hospital Emergency Department (ED) between October 2010 and September 2011.

Between October 2010 and September 2011 there were 15,542 injury attendances to Wythenshawe Hospital ED. Males accounted for over half (53%) of all attendances. The month with the highest attendances was May (n=1,536) with September having the lowest attendances (n=1,088) (**Figure 1**). Falls (61%) accounted for the highest proportion of injuries, followed by sports injury (13%), road traffic collision (RTC) (12%), assault (8%), and burns and scalds (4%) (**Table 1**).

For all injuries the highest proportion of attendances was for persons aged 20-34 (23%) and 5-19 (23%) years (**Figure 2**). Almost three in ten (29%) fall attendees were aged 65 or over. Almost four in ten (39%) sports injury attendees were aged 20-34 years. Four in ten (40%) RTC attendees were aged 20-34 years (**Figure 3**).

Table 2 shows the ethnicity of injury attendees to Wythenshawe Hospital ED. The large majority (86%) were white.

The disposal of a patient can give an indication of the severity of the injuries sustained. Half (50%) of attendees were discharged, 20% were referred and 17% were admitted to hospital (**Table 3**). Almost

seven in ten (69%) of RTC attendees were discharged. Over a third (35%) of burns and scald attendees were referred for follow-up treatment. Over a third (35%) of deliberate self-harm (DSH) attendees were admitted (**Table 4**).

Table 5 shows the arrival methods of attendances at Wythenshawe Hospital ED. Over a quarter (26%) arrived by ambulance.

Table 6 shows the incident location of injury attendances. Over three in ten (32%) occurred in the home whilst one in ten (10%) occurred in a public place.

Table 7 presents data for assault attendances to Wythenshawe Hospital ED. Over two-thirds (68%) were male and nearly a half (45%) were aged 20-34 years. A quarter (25%) occurred on weekend nights and over three in ten (31%) arrived by ambulance.

Figure 1: Wythenshawe Hospital ED: Total injury attendances by gender and month, October 2010 to September 2011

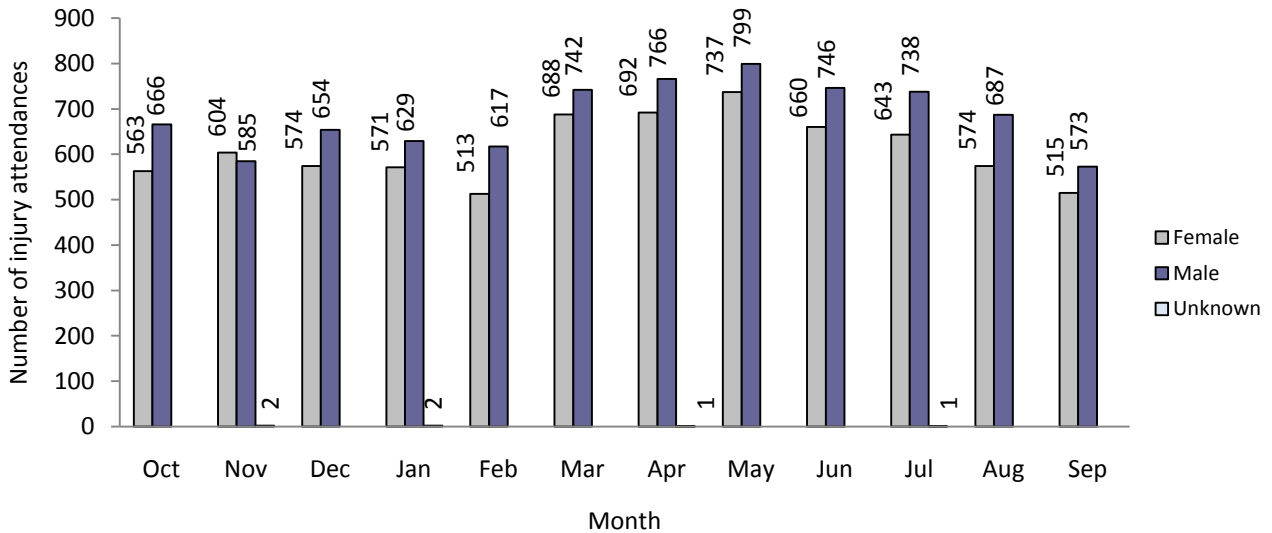
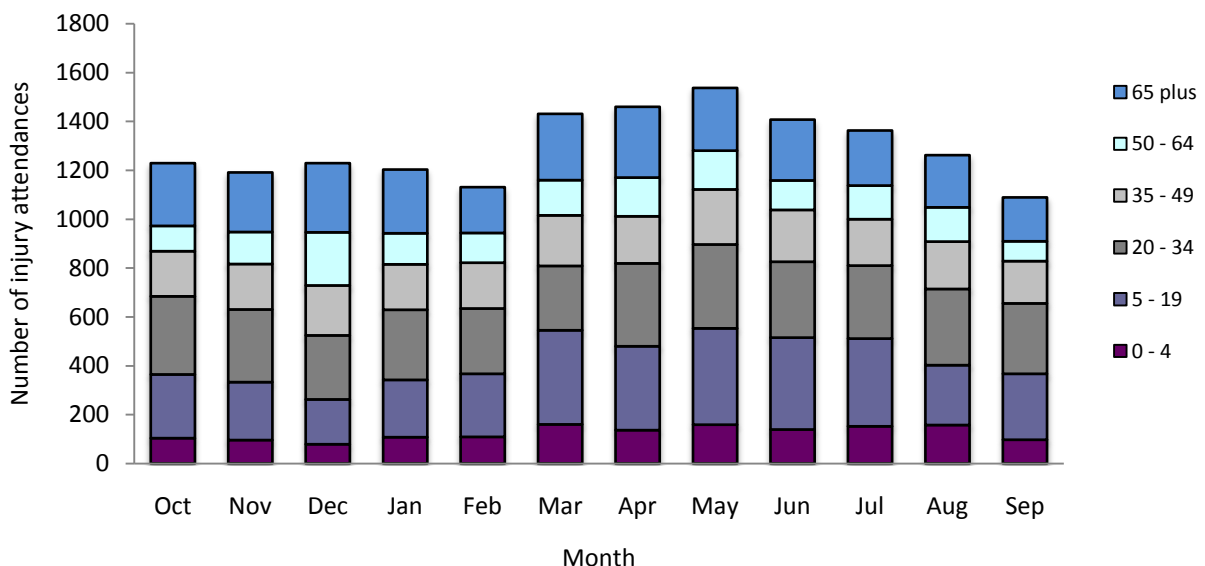


Table 1: Wythenshawe Hospital ED: Total injury attendances by injury group and month, October 2010 to September 2011¹

Injury group	Oct	Nov	Dec	Jan	Feb	Mar	Apr	May	Jun	Jul	Aug	Sep	Total	%
Fall	691	708	869	766	674	941	921	967	862	809	810	510	9528	61
Sports injury	160	120	60	124	148	176	189	230	197	216	125	275	2020	13
RTC	181	203	168	126	134	152	160	170	171	195	133	149	1942	12
Assault	127	97	79	121	121	96	115	94	90	71	92	80	1183	8
Burns and scalds	67	55	47	53	44	48	45	43	53	60	57	50	622	4
DSH	***	8	***	9	7	16	29	30	31	27	40	24	228	1
Electrical accident	***	***	***	***	***	***	***	***	***	***	***	***	***	0
Drowning/immersion	***	***	***	***	***	***	***	***	***	***	***	***	***	0
Total	1229	1191	1228	1202	1130	1430	1459	1536	1406	1382	1261	1088	15542	100

*Percentages may not add up to 100 due to rounding.

Figure 2: Wythenshawe Hospital ED: Total injury attendances by age group and month, October 2010 to September 2011



¹ Please note that all numbers less than five have been suppressed in line with patient confidentiality and if there is only one number <5 in a category then two numbers will be suppressed at the next level.

Figure 3: Wythenshawe Hospital ED: Total injury attendances by age group and injury group (excluding immersion/drowning and electrical accident), October 2010 to September 2011

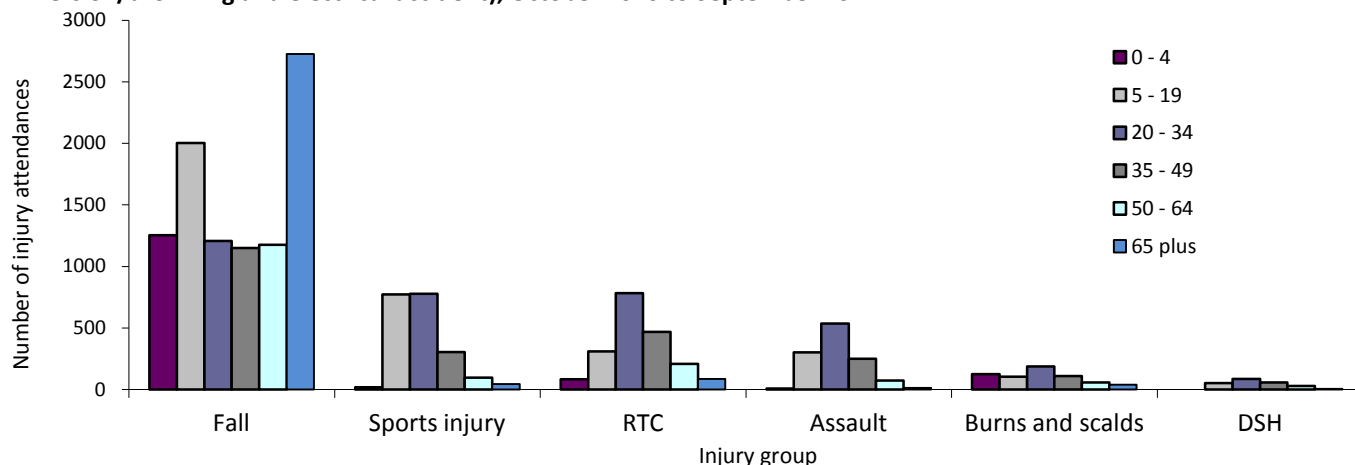


Table 2: Wythenshawe Hospital ED: Total injury attendances by ethnicity and month, October 2010 to September 2011²

Ethnicity	Oct	Nov	Dec	Jan	Feb	Mar	Apr	May	Jun	Jul	Aug	Sep	Total	%
White	1012	985	1031	1036	977	1227	1269	1339	1223	1182	1116	959	13356	86
Not known	131	129	130	82	58	109	74	77	87	82	52	41	1052	7
Pakistani	24	21	10	14	23	26	41	38	30	33	21	20	301	2
Mixed	23	14	12	22	28	19	28	23	19	35	21	16	260	2
Any other ethnic group	10	18	12	11	12	10	15	7	18	9	17	14	153	1
Indian	14	10	6	15	12	11	7	20	5	10	17	11	138	1
Black	9	***	10	10	10	14	12	17	***	20	7	12	132	1
Other Asian background	***	7	12	9	7	8	9	6	9	***	6	7	86	1
Chinese	***	***	***	***	***	***	***	8	5	8	***	***	50	0
Bangladeshi	***	***	***	***	***	***	***	***	***	***	***	***	14	0
Total	1229	1191	1228	1202	1130	1430	1459	1536	1406	1382	1261	1088	15542	100

*Percentages may not add up to 100 due to rounding.

Table 3: Wythenshawe Hospital ED: Total injury attendances by method of disposal and month, October 2010 to September 2011³

Disposal	Oct	Nov	Dec	Jan	Feb	Mar	Apr	May	Jun	Jul	Aug	Sep	Total	%
Discharged	546	556	589	472	455	622	694	689	839	866	812	679	7819	50
Referral/follow-up	261	222	247	273	262	335	271	347	234	229	205	209	3095	20
Admitted	214	196	229	244	191	219	273	229	210	230	211	159	2605	17
Other	208	217	163	213	222	254	221	271	123	57	33	41	2023	13
Total	1229	1191	1228	1202	1130	1430	1459	1536	1406	1382	1261	1088	15542	100

Table 4: Wythenshawe Hospital ED: Total injury attendances by method of disposal and injury group (excluding immersion/drowning and electrical accident), October 2010 to September 2011

Disposal	Assault		Burns and scalds		DSH		Fall		RTC		Sports injury		Total	
	n	%	n	%	n	%	n	%	n	%	n	%	n	%
Discharged	608	51	249	40	80	35	4464	47	1345	69	1060	52	7806	50
Referral/follow-up	193	16	219	35	33	15	1934	20	137	7	578	29	3094	20
Admitted	171	14	62	10	86	38	2062	22	104	5	117	6	2602	17
Other	211	18	92	15	29	13	1068	11	356	18	265	13	2021	13
Total	1183	100	622	100	228	100	9528	100	1942	100	2020	100	15523	100

² White=Irish, British, other white background; Mixed=white and black, white and Asian, mixed any other; Black=African, Caribbean, other black.

³ Admitted=admitted to ED bed/became a lodged patient of the same health care provider; Discharged=discharged - did not require any follow up treatment; Referral/follow up=discharged - follow up treatment to be provided by GP, referred to ED clinic, referred to fracture clinic, referred to other out-patient clinic, transferred to other health care provider, referred to other health care professional; Other=died in department, left department before being treated, left department having refused treatment, other.

Table 5: Wythenshawe Hospital ED: Total injury attendances by mode of arrival and month, October 2010 to September 2011

Arrival mode	Oct	Nov	Dec	Jan	Feb	Mar	Apr	May	Jun	Jul	Aug	Sep	Total	%
Not known	870	863	870	871	849	1083	1045	1179	1079	1041	905	822	11477	74
Ambulance	359	328	358	331	281	347	414	357	327	341	356	266	4065	26
Total	1229	1191	1228	1202	1130	1430	1459	1536	1406	1382	1261	1088	15542	100

Table 6: Wythenshawe Hospital ED: Total injury attendances by location of incident and injury group (excluding immersion/drowning and electrical accident), October 2010 to September 2011*

Location	Assault		Burns and scalds		DSH		Fall		RTC		Sports injury		Total	
	n	%	n	%	n	%	n	%	n	%	n	%	n	%
Home	297	25	316	51	98	43	4186	44	0	0	0	0	4897	32
Not recorded	352	30	204	33	97	43	2527	27	0	0	0	0	3180	20
Sport	32	3	8	1	***	0	405	4	0	0	2020	100	2465	16
RTC	***	0	***	0	***	1	49	1	1942	100	0	0	1996	13
Public place	292	25	24	4	16	7	1212	13	0	0	0	0	1544	10
School/college	37	3	***	0	***	0	447	5	0	0	0	0	487	3
Street	84	7	***	0	***	2	362	4	0	0	0	0	450	3
Work	23	2	57	9	***	0	209	2	0	0	0	0	289	2
Another's home	39	3	11	2	9	4	116	1	0	0	0	0	175	1
Bar/pub	20	2	***	0	***	0	***	0	0	0	0	0	33	0
Club	***	0	***	0	***	0	***	0	0	0	0	0	7	0
Total	1183	100	622	100	228	100	9528	100	1942	100	2020	100	15523	100

*Percentages may not add up to 100 due to rounding.

Table 7: Wythenshawe Hospital ED: Assault attendances by gender, arrival mode, age group and day and time of attendance, October 2010 to September 2011

Injury type	Assault attendees		All injuries % (n=15,542) *
	n	%	%
Gender			
Female	376	32	47
Male	807	68	53
Mode			
Ambulance	372	31	26
Other	811	69	74
Age group			
0 - 4	9	1	10
5 - 19	301	25	23
20 - 34	536	45	23
35 - 49	251	21	15
50 - 64	73	6	11
65 plus	13	1	19
Day & time			
Weekend nights**	292	25	10
Weekend days	278	23	23
Weekdays	613	52	67

* Percentages may not add up to 100 due to rounding.

**8pm to 4am Friday night/Saturday morning, Saturday night/Sunday morning, Sunday night/Monday morning.

Author: Ian Warren, Published: December 2011

For further information please contact: Centre for Public Health, Research Directorate, Liverpool John Moores University, 2nd Floor, Henry Cotton Building, 15-21 Webster Street, Liverpool, L3 2ET, Tel: 0151 231 4513 or Email: i.j.warren@ljmu.ac.uk

Website: www.tiig.info (data requests should be made through the website)