

### Injury attendances to Wythenshawe Hospital Emergency Department

#### October 2011 to September 2012

This report summarises recorded injury attendances to Wythenshawe Hospital Emergency Department (ED) between October 2011 and September 2012.

Between October 2011 and September 2012 there were 14,091 injury attendances to Wythenshawe Hospital ED. Males accounted for over half (53%) of all attendances. The month with the highest attendances was May (n=1,437) with February having the lowest attendances (n=719) (**Figure 1**). Falls (54%) accounted for the highest proportion of injuries, followed by sports injury (17%), road traffic collision (RTC) (14%), assault (7%), and burns and scalds (4%) (**Table 1**).

For all injuries the highest proportion of attendances were for persons aged 20 to 34 (25%) and 5 to 19 (23%) years (**Figure 2**). Three in ten (31%) fall attendees were aged 65 or over. Almost four in ten (38%) sports injury attendees were aged 5 to 19 years or 20 to 34 years. Almost four in ten (39%) RTC attendees were aged 20 to 34 years (**Figure 3**).

**Table 2** shows the ethnicity of injury attendees to Wythenshawe Hospital ED. The large majority (88%) were white.

The disposal of a patient can give an indication of the severity of the injuries sustained. Almost two-thirds (63%) of attendees were discharged, 17% were referred and 16% were admitted to hospital (**Table**

**3**). Over four-fifths (83%) of RTC attendees were discharged. A third (33%) of burns and scald attendees were referred for follow-up treatment. Four in ten (40%) of deliberate self-harm (DSH) attendees were admitted (**Table 4**).

**Table 5** shows the arrival methods of attendances at Wythenshawe Hospital ED. Over a quarter (26%) arrived by ambulance.

**Table 6** shows the incident location of injury attendances. Almost three in ten (29%) occurred in the home whilst almost one in ten (8%) occurred in a public place.

**Table 7** presents data for assault attendances to Wythenshawe Hospital ED. There were 917 assault attendances recorded between October 2011 and September 2012. Seven in ten (70%) were male and under half (46%) were aged 20 to 34 years. Three in ten (30%) arrived by ambulance.

Figure 1: Wythenshawe Hospital ED: Total injury attendances by gender and month, October 2011 to September 2012

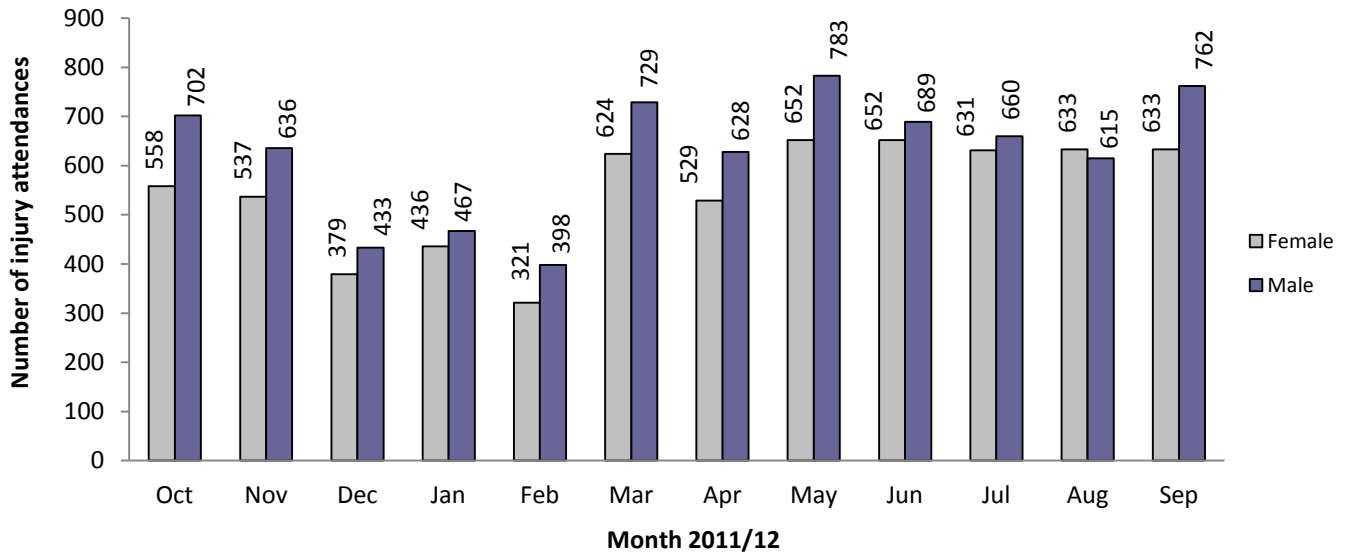
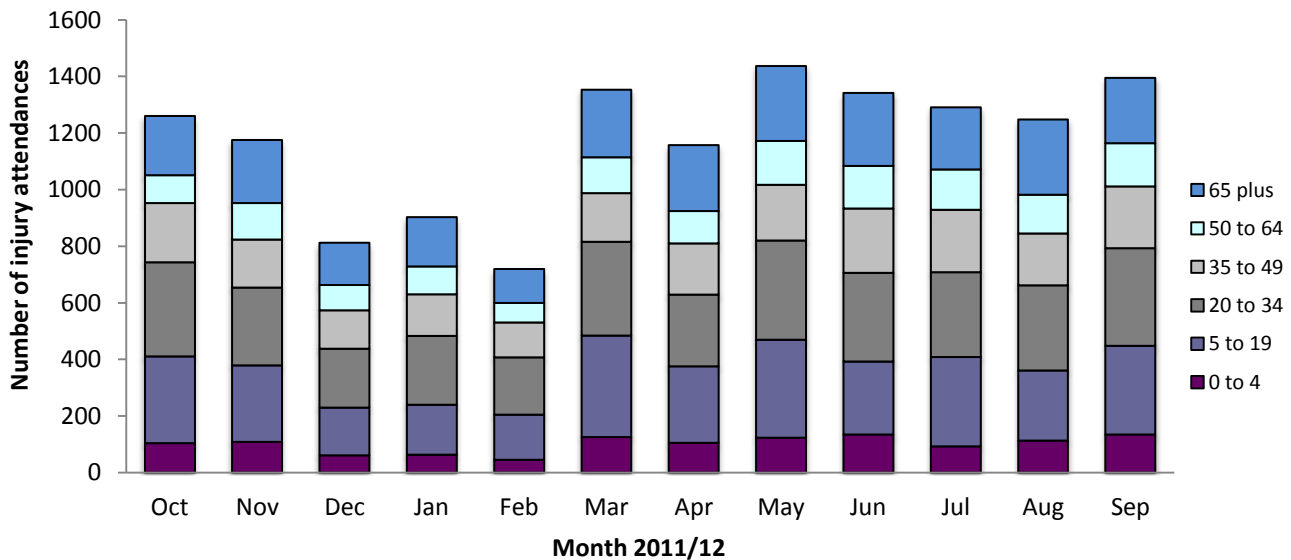


Table 1: Wythenshawe Hospital ED: Total injury attendances by injury group and month, October 2011 to September 2012<sup>1</sup>

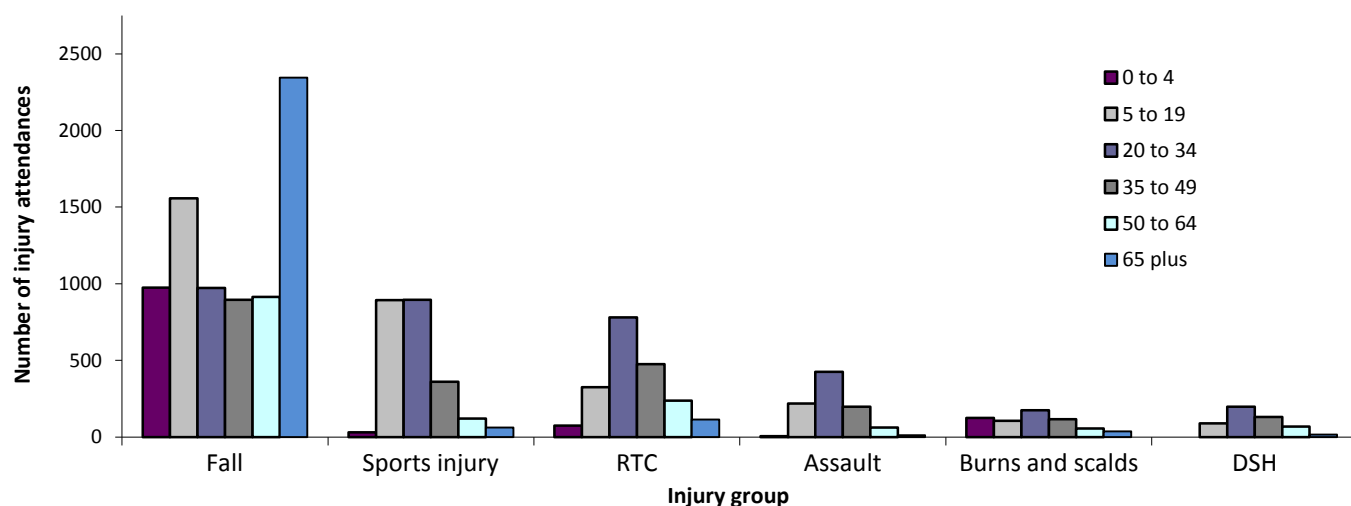
Injury group	Oct	Nov	Dec	Jan	Feb	Mar	Apr	May	Jun	Jul	Aug	Sep	Total	%
Fall	614	630	315	438	257	819	664	821	828	736	705	832	7659	54
Sports injury	257	208	158	166	160	211	183	249	165	192	191	224	2364	17
RTC	183	170	215	164	182	139	126	159	166	186	151	165	2006	14
Assault	108	95	59	61	43	81	84	92	65	70	78	81	917	7
Burn/Scald	69	47	35	44	49	53	49	48	63	53	59	46	615	4
DSH	<28	<24	<28	<30	28	<47	<51	<65	54	46	<63	<46	501	4
Other injury	***	***	***	***	0	***	***	***	0	8	***	***	29	0
<b>Total</b>	<b>1260</b>	<b>1175</b>	<b>812</b>	<b>903</b>	<b>719</b>	<b>1353</b>	<b>1157</b>	<b>1437</b>	<b>1341</b>	<b>1291</b>	<b>1248</b>	<b>1395</b>	<b>14091</b>	<b>100</b>

Figure 2: Wythenshawe Hospital ED: Total injury attendances by age group and month, October 2011 to September 2012



<sup>1</sup> Please note that all numbers less than five have been suppressed in line with patient confidentiality and if there is only one number <5 in a category then two numbers will be suppressed at the next level.

**Figure 3: Wythenshawe Hospital ED: Total injury attendances by age group and injury group (excluding other injury), October 2011 to September 2012**



**Table 2: Wythenshawe Hospital ED: Total injury attendances by ethnicity and month, October 2011 to September 2012<sup>2</sup>**

Ethnicity	Oct	Nov	Dec	Jan	Feb	Mar	Apr	May	Jun	Jul	Aug	Sep	Total	%
White	1119	1037	697	786	624	1209	1027	1271	1182	1148	1112	1233	12445	88
Not known	58	36	34	35	41	55	49	58	64	50	53	80	613	4
Pakistani	15	21	24	19	17	25	22	37	28	30	19	25	282	2
Mixed	25	25	11	18	11	22	28	27	16	18	20	20	241	2
Black	14	17	20	15	8	8	14	12	14	9	14	14	159	1
Any other ethnic group	***	12	8	18	9	13	***	8	15	15	12	9	123	1
Indian	8	12	6	<5	***	6	8	12	10	9	10	7	95	1
Any other Asian background	11	10	10	6	6	11	***	<6	6	***	6	5	82	1
Chinese	5	5	***	***	***	***	***	6	6	8	***	***	45	0
Bangladeshi	***	0	***	***	0	***	***	***	0	***	***	***	6	0
<b>Total</b>	<b>1260</b>	<b>1175</b>	<b>812</b>	<b>903</b>	<b>719</b>	<b>1353</b>	<b>1157</b>	<b>1437</b>	<b>1341</b>	<b>1291</b>	<b>1248</b>	<b>1395</b>	<b>14091</b>	<b>100</b>

**Table 3: Wythenshawe Hospital ED: Total injury attendances by method of disposal and month, October 2011 to September 2012<sup>3\*</sup>**

Disposal	Oct	Nov	Dec	Jan	Feb	Mar	Apr	May	Jun	Jul	Aug	Sep	Total	%
Discharged	864	757	541	597	471	848	684	851	848	794	769	891	8915	63
Referral/follow-up	180	178	117	158	96	272	226	273	230	238	197	256	2421	17
Admitted	177	205	124	129	110	187	202	255	224	217	237	212	2279	16
Other	39	35	30	19	42	46	45	58	39	42	45	36	476	3
<b>Total</b>	<b>1260</b>	<b>1175</b>	<b>812</b>	<b>903</b>	<b>719</b>	<b>1353</b>	<b>1157</b>	<b>1437</b>	<b>1341</b>	<b>1291</b>	<b>1248</b>	<b>1395</b>	<b>14091</b>	<b>100</b>

\*Percentages may not add up to 100 due to rounding.

**Table 4: Wythenshawe Hospital ED: Total injury attendances by method of disposal and injury group, October 2011 to September 2012<sup>3\*</sup>**

Disposal	Assault		Burns and scalds		DSH		Other injury		Fall		RTC		Sports injury		Total	
	n	%	n	%	n	%	n	%	n	%	n	%	n	%	n	%
Discharged	604	66	313	51	205	41	18	62	4519	59	1660	83	1596	68	8915	63
Referral/follow-up	120	13	205	33	55	11	7	24	1374	18	99	5	561	24	2421	17
Admitted	140	15	<63	10	199	40	***	14	1586	21	156	8	132	6	2279	16
Other	53	6	<36	6	42	8	***	0	180	2	91	5	75	3	476	3
<b>Total</b>	<b>917</b>	<b>100</b>	<b>615</b>	<b>100</b>	<b>501</b>	<b>100</b>	<b>29</b>	<b>100</b>	<b>7659</b>	<b>100</b>	<b>2006</b>	<b>100</b>	<b>2364</b>	<b>100</b>	<b>14091</b>	<b>100</b>

\*Percentages may not add up to 100 due to rounding.

<sup>2</sup> White=Irish, British, other white background; Mixed=white and black, white and Asian, mixed any other; Black=African, Caribbean, other black.

<sup>3</sup> Admitted=admitted to ED bed/became a lodged patient of the same health care provider; Discharged=discharged - did not require any follow-up treatment; Referral/follow-up=discharged - follow-up treatment to be provided by GP, referred to ED clinic, referred to fracture clinic, referred to other out-patient clinic, transferred to other health care provider, referred to other health care professional; Other=died in department, left department before being treated, left department having refused treatment, other.

**Table 5: Wythenshawe Hospital ED: Total injury attendances by mode of arrival and month, October 2011 to September 2012**

Arrival mode	Oct	Nov	Dec	Jan	Feb	Mar	Apr	May	Jun	Jul	Aug	Sep	Total	%
Not known	945	848	552	640	487	1034	859	1111	1006	957	912	1060	10411	74
Ambulance	315	327	260	263	232	319	298	326	335	334	336	335	3680	26
<b>Total</b>	<b>1260</b>	<b>1175</b>	<b>812</b>	<b>903</b>	<b>719</b>	<b>1353</b>	<b>1157</b>	<b>1437</b>	<b>1341</b>	<b>1291</b>	<b>1248</b>	<b>1395</b>	<b>14091</b>	<b>100</b>

**Table 6: Wythenshawe Hospital ED: Total injury attendances by location of incident and injury group, October 2011 to September 2012**

Location	Assault		Burns & scalds		DSH		Fall		RTC		Other injury		Sports injury		Total	
	n	%	n	%	n	%	n	%	n	%	n	%	n	%	n	%
Home	222	24	307	50	166	33	3362	44	0	0	10	34	0	0	4067	29
Sport	36	4	9	1	***	1	400	5	0	0	***	0	2364	100	2813	20
Not recorded	245	27	178	29	284	57	1964	26	0	0	8	28	0	0	2679	19
RTC	***	0	***	1	0	0	40	1	2006	100	***	3	0	0	2053	15
Public place	215	23	<34	5	34	7	895	12	0	0	***	7	0	0	1179	8
Street	87	10	***	0	***	1	334	4	0	0	0	0	0	0	427	3
School/college	22	2	***	1	***	0	322	4	0	0	0	0	0	0	350	3
Work	33	4	67	11	***	0	198	3	0	0	<8	24	0	0	307	2
Another's home	32	4	10	2	<6	1	126	2	0	0	***	3	0	0	174	1
Bar/Pub	<18	2	0	0	***	0	13	0	0	0	0	0	0	0	31	0
Club	6	1	0	0	0	0	5	0	0	0	0	0	0	0	11	0
<b>Total</b>	<b>917</b>	<b>100</b>	<b>615</b>	<b>100</b>	<b>501</b>	<b>100</b>	<b>7659</b>	<b>100</b>	<b>2006</b>	<b>100</b>	<b>29</b>	<b>100</b>	<b>2364</b>	<b>100</b>	<b>14091</b>	<b>100</b>

**Table 7: Wythenshawe Hospital ED: Assault attendances by gender, arrival mode and age group, October 2011 to September 2012**

Injury type	Assault attendees (n=917)		All injuries % (n=14,091)
	n	%	
<b>Gender</b>			
Female	280	30	47
Male	649	70	53
<b>Arrival mode</b>			
Ambulance	272	30	26
Other	645	70	74
<b>Age group</b>			
0 - 4	5	0	9
5 - 19	218	24	23
20 – 34	425	46	25
35 - 49	197	21	15
50 - 64	61	7	10
65 plus	11	1	18

Author: Johnathan Rooney, Published: December 2012

For further information please contact: Val Upton, Centre for Public Health, Research Directorate, Liverpool John Moores University, 2<sup>nd</sup> Floor, Henry Cotton Building, 15-21 Webster Street, Liverpool, L3 2ET, Tel: 0151 231 4539 or Email: [j.rooney@ljmu.ac.uk](mailto:j.rooney@ljmu.ac.uk)

Website: [www.tiig.info](http://www.tiig.info) (data requests should be made through the website)