

Injury attendances to Wythenshawe Hospital Emergency Department

January to December 2011

This report summarises recorded injury attendances to Wythenshawe Hospital Emergency Department (ED) between January and December 2011.

Between January and December 2011 there were 15,101 injury attendances to Wythenshawe Hospital ED. Males accounted for over half (53%) of all attendances. The month with the highest attendances was May (n=1,536) with December having the lowest attendances (n=813) (**Figure 1**). Falls (58%) accounted for the highest proportion of injuries, followed by sports injury (15%), road traffic collision (RTC) (13%), assault (8%), and burns and scalds (4%) (**Table 1**).

For all injuries the highest proportion of attendances were for persons aged 20 to 34 (23%) and 5 to 19 (24%) years (**Figure 2**). Almost three in ten (28%) fall attendees were aged 65 or over. Almost four in ten (38%) sports injury attendees were aged 20 to 34 years. Almost four in ten (38%) RTC attendees were aged 20 to 34 years (**Figure 3**).

Table 2 shows the ethnicity of injury attendees to Wythenshawe Hospital ED. The large majority (87%) were white.

The disposal of a patient can give an indication of the severity of the injuries sustained. Over half (55%) of attendees were discharged, 19% were referred and 16% were admitted to hospital (**Table 3**). Three-

quarters (75%) of RTC attendees were discharged. A third (33%) of burns and scald attendees were referred for follow-up treatment. Over a third (35%) of deliberate self-harm (DSH) attendees were admitted (**Table 4**).

Table 5 shows the arrival methods of attendances at Wythenshawe Hospital ED. Over a quarter (26%) arrived by ambulance.

Table 6 shows the incident location of injury attendances. Three in ten (30%) occurred in the home whilst almost one in ten (9%) occurred in a public place.

Table 7 presents data for assault attendances to Wythenshawe Hospital ED. Over two-thirds (68%) were male and over two-fifths (44%) were aged 20 to 34 years. Over three in ten (31%) arrived by ambulance.

Figure 1: Wythenshawe Hospital ED: Total injury attendances by gender and month, January to December 2011

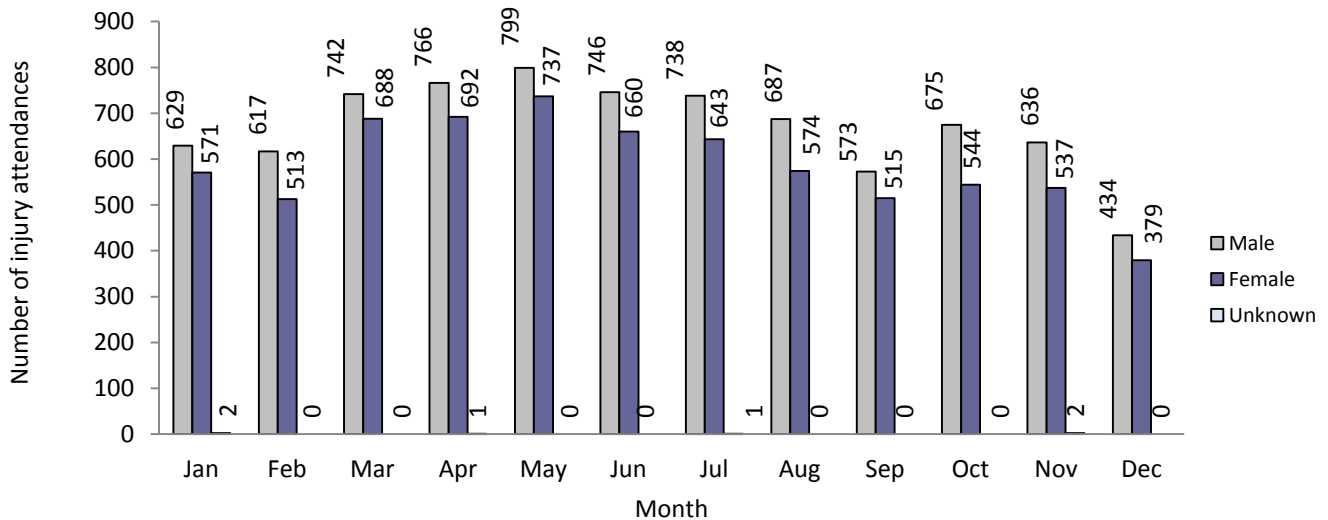
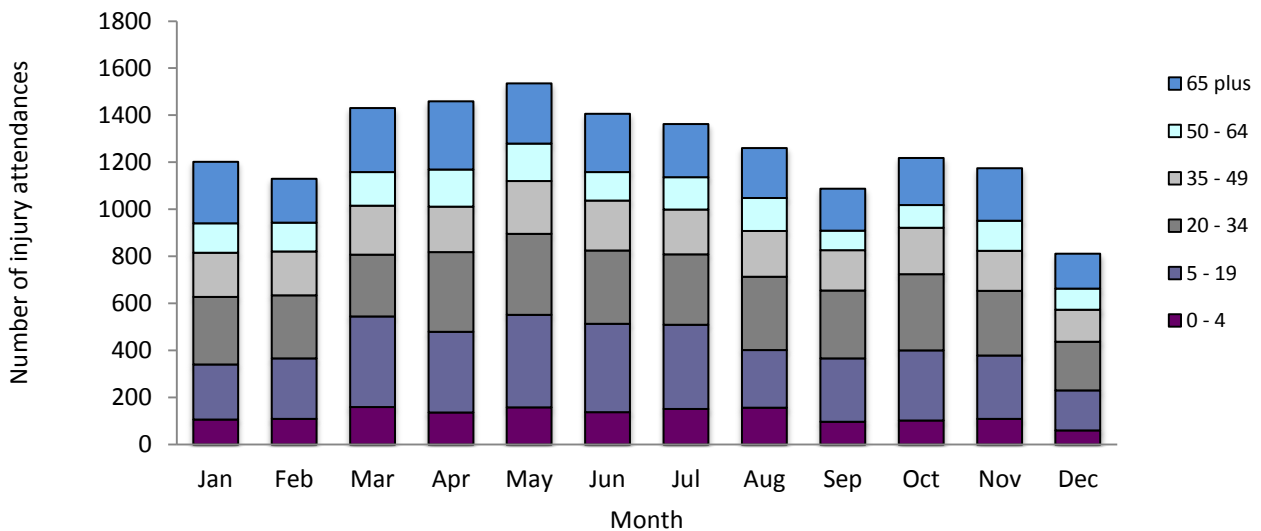


Table 1: Wythenshawe Hospital ED: Total injury attendances by injury group and month, January to December 2011¹

Injury group	Jan	Feb	Mar	Apr	May	Jun	Jul	Aug	Sep	Oct	Nov	Dec	Total	%
Fall	766	674	941	921	967	862	809	810	510	593	630	316	8799	58
Sports injury	124	148	176	189	230	197	216	125	275	248	208	158	2294	15
RTC	126	134	152	160	170	171	195	133	149	177	170	215	1952	13
Assault	121	121	96	115	94	90	71	92	80	106	95	59	1140	8
Burns and scalds	53	44	48	45	43	53	60	57	50	67	47	35	602	4
DSH	***	***	***	***	***	***	***	***	***	***	***	***	289	2
Other injury	***	***	***	***	***	***	***	***	***	***	***	***	25	0
Total	1202	1130	1430	1459	1536	1406	1382	1261	1088	1219	1175	813	15101	100

Figure 2: Wythenshawe Hospital ED: Total injury attendances by age group and month, January to December 2011



¹ Please note that all numbers less than five have been suppressed in line with patient confidentiality and if there is only one number <5 in a category then two numbers will be suppressed at the next level.

Figure 3: Wythenshawe Hospital ED: Total injury attendances by age group and injury group (excluding other injury), January to December 2011

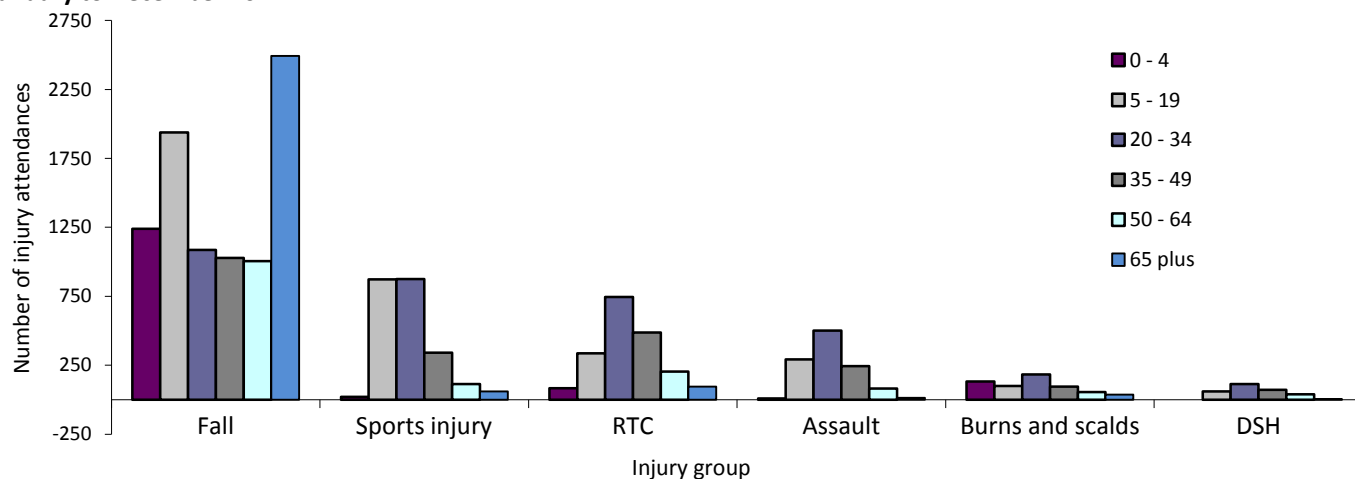


Table 2: Wythenshawe Hospital ED: Total injury attendances by ethnicity and month, January to December 2011²

Ethnicity	Jan	Feb	Mar	Apr	May	Jun	Jul	Aug	Sep	Oct	Nov	Dec	Total	%
White	1036	977	1227	1269	1339	1223	1182	1116	959	1081	1037	697	13143	87
Not known	30	16	49	38	32	40	41	38	33	52	29	31	429	3
Pakistani	14	23	26	41	38	30	33	21	20	15	21	24	306	2
Not stated	44	30	48	30	38	41	32	10	***	5	6	***	291	2
Mixed	22	28	19	28	23	19	35	21	16	24	25	11	271	2
Black	10	10	14	12	17	9	20	7	12	14	17	20	162	1
Any other ethnic group	11	12	10	15	***	18	9	17	14	***	12	8	135	1
Indian	15	12	11	7	20	5	10	17	11	6	12	6	132	1
Any other Asian background	9	7	8	9	***	9	***	6	7	11	10	10	94	1
Not specified	8	12	12	6	7	6	9	***	***	***	***	***	71	0
Chinese	***	***	***	***	8	5	8	***	5	5	5	***	52	0
Bangladeshi	***	***	***	***	***	***	***	***	***	***	***	***	15	0
Total	1202	1130	1430	1459	1536	1406	1382	1261	1088	1219	1175	813	15101	100

Table 3: Wythenshawe Hospital ED: Total injury attendances by method of disposal and month, January to December 2011³

Disposal	Jan	Feb	Mar	Apr	May	Jun	Jul	Aug	Sep	Oct	Nov	Dec	Total	%
Discharged	472	455	622	694	689	839	866	812	679	838	757	542	8265	55
Referral/follow-up	273	262	335	271	347	234	229	205	209	171	170	110	2816	19
Admitted	244	191	219	273	229	210	230	211	159	167	205	124	2462	16
Other	213	222	254	221	271	123	57	33	41	43	43	37	1558	10
Total	1202	1130	1430	1459	1536	1406	1382	1261	1088	1219	1175	813	15101	100

² White=Irish, British, other white background; Mixed=white and black, white and Asian, mixed any other; Black=African, Caribbean, other black.

³ Admitted=admitted to ED bed/became a lodged patient of the same health care provider; Discharged=discharged - did not require any follow-up treatment; Referral/follow-up=discharged - follow-up treatment to be provided by GP, referred to ED clinic, referred to fracture clinic, referred to other out-patient clinic, transferred to other health care provider, referred to other health care professional; Other=died in department, left department before being treated, left department having refused treatment, other.

Table 4: Wythenshawe Hospital ED: Total injury attendances by method of disposal and injury group, January to December 2011*

Disposal	Assault		Burns and scalds		DSH		Other injury		Fall		RTC		Sports injury		Total	
	n	%	n	%	n	%	n	%	n	%	n	%	n	%	n	%
Admitted	164	14	65	11	102	35	5	20	1875	21	119	6	132	6	2462	16
Discharged	630	55	261	43	115	40	16	64	4445	51	1473	75	1325	58	8265	55
Other	169	15	80	13	***	12	***	8	813	9	247	13	212	9	1558	10
Referral/follow-up	177	16	196	33	***	13	***	8	1666	19	113	6	625	27	2816	19
Total	1140	100	602	100	289	100	25	100	8799	100	1952	100	2294	100	15101	100

*Percentages may not add up to 100 due to rounding.

Table 5: Wythenshawe Hospital ED: Total injury attendances by mode of arrival and month, January to December 2011

Arrival mode	Jan	Feb	Mar	Apr	May	Jun	Jul	Aug	Sep	Oct	Nov	Dec	Total	%
Not known	871	849	1083	1045	1179	1079	1041	905	822	914	848	552	11188	74
Ambulance	331	281	347	414	357	327	341	356	266	305	327	261	3913	26
Total	1202	1130	1430	1459	1536	1406	1382	1261	1088	1219	1175	813	15101	100

Table 6: Wythenshawe Hospital ED: Total injury attendances by location of incident and injury group, January to December 2011*

Location	Assault		Burns and scalds		DSH		Other injury		Fall		RTC		Sports injury		Total	
	n	%	n	%	n	%	n	%	n	%	n	%	n	%	n	%
Home	283	25	300	50	122	42	5	20	3875	44	0	0	0	0	4585	30
Not recorded	310	27	201	33	128	44	12	48	2313	26	0	0	0	0	2964	20
Sport	39	3	7	1	***	0	***	0	415	5	0	0	2294	100	2756	18
RTC	***	0	***	0	***	1	***	0	42	0	1952	100	0	0	1999	13
Public place	279	24	31	5	21	7	***	4	1058	12	0	0	0	0	1390	9
School/college	40	4	***	0	***	0	***	0	434	5	0	0	0	0	477	3
Street	92	8	***	0	***	1	***	0	333	4	0	0	0	0	428	3
Work	27	2	53	9	***	0	***	28	205	2	0	0	0	0	292	2
Another's home	41	4	8	1	10	3	***	0	111	1	0	0	0	0	170	1
Bar/Pub	***	2	***	0	***	0	***	0	***	0	0	0	0	0	33	0
Club	***	0	***	0	***	0	***	0	***	0	0	0	0	0	7	0
Total	1140	100	602	100	289	100	25	100	8799	100	1952	100	2294	100	15101	100

*Percentages may not add up to 100 due to rounding.

Table 7: Wythenshawe Hospital ED: Assault attendances by gender, arrival mode and age group, January to December 2011

Injury type	Assault attendees (n=1,140)		All injuries % (n=15,101) *
	n	%	
Gender			
Female	367	32	47
Male	773	68	53
Mode			
Ambulance	355	31	26
Other	785	69	74
Age group**			
0 - 4	5	0	10
5 - 19	292	26	24
20 - 34	501	44	23
35 - 49	244	21	15
50 - 64	81	7	10
65 plus	13	1	18

* Percentages may not add up to 100 due to rounding. **Age was not recorded in four cases.

Author: Ian Warren, Published: March 2012

For further information please contact: Centre for Public Health, Research Directorate, Liverpool John Moores University, 2nd Floor, Henry Cotton Building, 15-21 Webster Street, Liverpool, L3 2ET, Tel: 0151 231 4513 or Email: i.j.warren@ljmu.ac.uk

Website: www.tiig.info (data requests should be made through the website)