



TIIG

INJURY SURVEILLANCE IN THE NORTH WEST OF ENGLAND

Injury attendances to Wythenshawe Hospital Emergency Department

April 2012 to March 2013

This report summarises recorded injury attendances to Wythenshawe Hospital Emergency Department (ED) between April 2012 and March 2013.

Between April 2012 and March 2013 there were 14,405 injury attendances to Wythenshawe Hospital ED. Males accounted for over half (53%) of all attendances. The month with the highest attendances was May (n=1,437) with December having the lowest attendances (n=1,008) (**Figure 1**). Falls (58%) accounted for the highest proportion of injuries, followed by sports injury (16%), road traffic collision (RTC) (13%), assault (6%), and burns and scalds (4%) (**Table 1**).

For all injuries the highest proportion of attendances were for persons aged 20 to 34 (24%) and 5 to 19 (22%) years (**Figure 2**). Almost a third (32%) fall attendees were aged 65 or over. Almost four in ten sports injury attendees were aged 5 to 19 years (37%) or 20 to 34 years (38%). Four in ten (40%) RTC attendees were aged 20 to 34 years (**Figure 3**).

Table 2 shows the ethnicity of injury attendees to Wythenshawe Hospital ED. The large majority (89%) were white.

The disposal of a patient can give an indication of the severity of the injuries sustained. Almost two-thirds (62%) of attendees were discharged, 18% were referred and 16% were admitted to hospital (**Table**

3). Over four-fifths (81%) of RTC attendees were discharged. Over a third (35%) of burns and scald attendees were referred for follow-up treatment. Over four in ten (45%) of deliberate self-harm (DSH) attendees were admitted (**Table 4**).

Table 5 shows the arrival methods of attendances at Wythenshawe Hospital ED. Over a quarter (26%) arrived by ambulance.

Table 6 shows the incident location of injury attendances. A third (33%) occurred in the home whilst almost one in ten (9%) occurred in a public place.

Table 7 presents data for assault attendances to Wythenshawe Hospital ED. There were 795 assault attendances recorded between April 2012 and March 2013. Seven in ten (70%) were male and under half (46%) were aged 20 to 34 years. Almost three in ten (28%) arrived by ambulance.

Figure 1: Wythenshawe Hospital ED: Total injury attendances by gender and month, April 2012 to March 2013

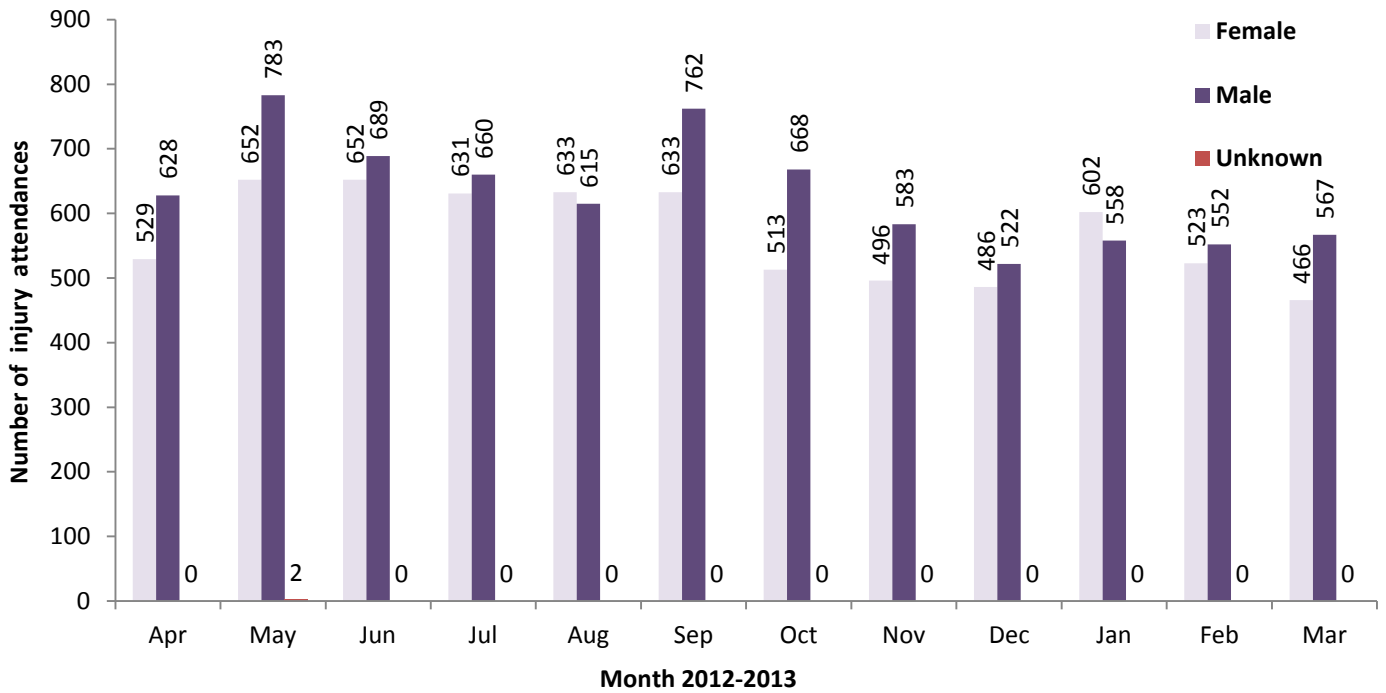
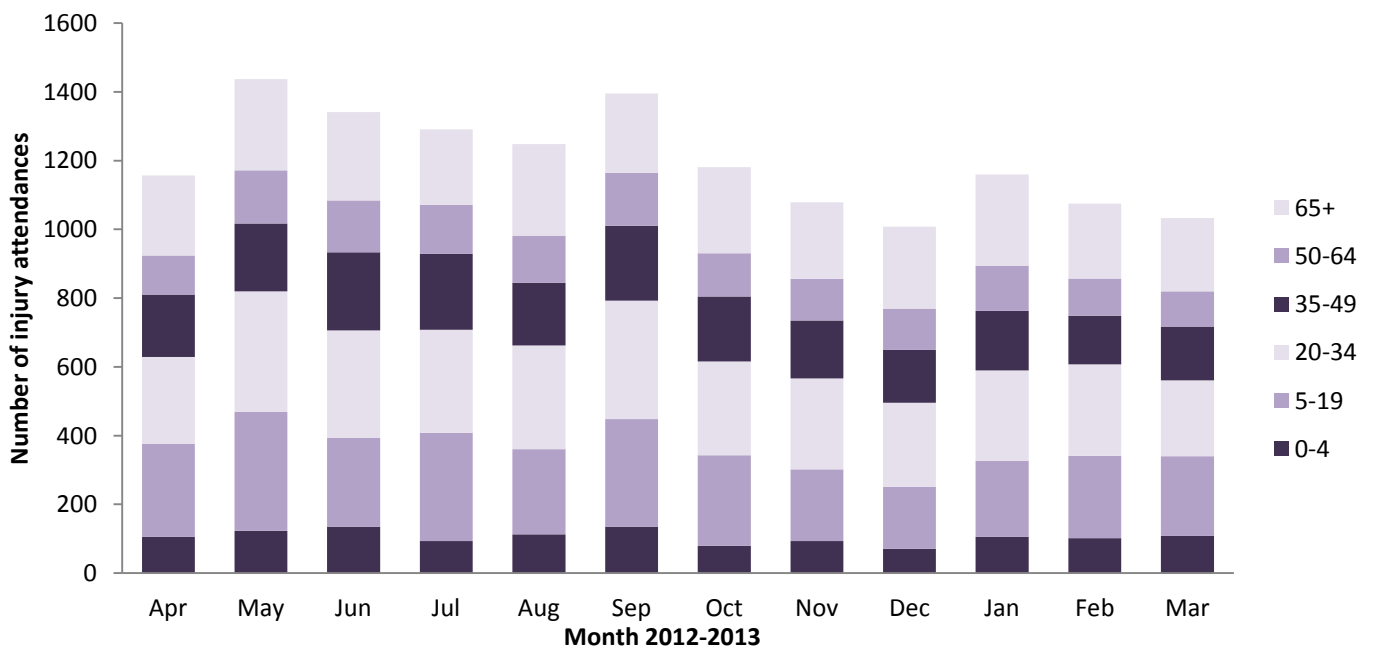


Table 1: Wythenshawe Hospital ED: Total injury attendances by injury group and month, April 2012 to March 2013¹

Injury group	Apr	May	Jun	Jul	Aug	Sep	Oct	Nov	Dec	Jan	Feb	Mar	Total	%
Fall	664	821	828	736	705	832	639	547	628	774	631	593	8398	58
Sports injury	183	249	165	192	191	224	223	205	110	134	200	178	2254	16
RTC	126	159	166	186	151	165	170	214	161	140	148	154	1940	13
Assault	84	92	65	70	78	81	73	45	55	62	41	49	795	6
Burn/Scald	49	48	63	53	59	46	38	36	37	38	45	51	563	4
DSH	<55	<65	54	46	<65	<50	<40	<40	<15	12	<10	8	429	3
Other injury	***	***	0	8	***	***	***	***	***	0	***	0	26	0
Total	1157	1437	1341	1291	1248	1395	1181	1079	1008	1160	1075	1033	14405	100

Figure 2: Wythenshawe Hospital ED: Total injury attendances by age group and month, April 2012 to March 2013



¹ Please note that all numbers less than five have been suppressed in line with patient confidentiality and if there is only one number <5 in a category then two numbers will be suppressed at the next level.

Figure 3: Wythenshawe Hospital ED: Total injury attendances by age group and injury group (excluding other injury), April 2012 to March 2013

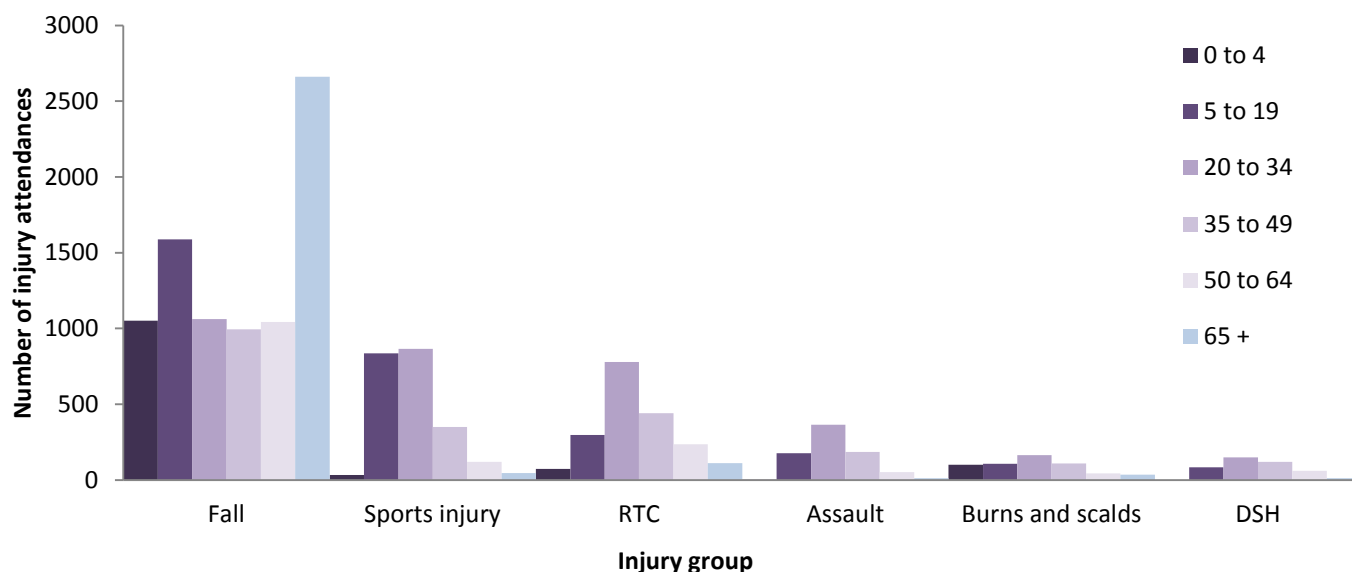


Table 2: Wythenshawe Hospital ED: Total injury attendances by ethnicity and month, April 2012 to March 2013^{1,2}

Ethnicity	Apr	May	Jun	Jul	Aug	Sep	Oct	Nov	Dec	Jan	Feb	Mar	Total	%
White	1027	1271	1182	1148	1112	1233	1039	955	883	1042	953	923	12768	89
Pakistani	49	58	64	50	53	80	30	31	46	32	26	27	546	4
Not stated	22	37	28	30	19	25	30	25	22	21	29	17	305	2
Black	28	27	16	18	20	20	32	15	18	20	21	21	256	2
Mixed	14	12	14	9	14	14	13	19	10	16	12	16	163	1
Any other ethnic group	8	12	10	9	10	7	14	14	12	10	12	15	133	1
Indian	***	8	15	15	12	9	15	9	***	13	16	7	124	1
Asian other	***	<6	6	***	***	<6	***	5	<6	***	<6	***	55	0
Not known	***	6	6	<10	***	***	***	<6	9	***	***	***	<55	0
Chinese	***	***	0	0	0	0	0	***	0	0	0	0	<5	0
Total	1157	1437	1341	1291	1248	1395	1181	1079	1008	1160	1075	1033	14405	100

Table 3: Wythenshawe Hospital ED: Total injury attendances by method of disposal and month, April 2012 to March 2013³

Disposal	Apr	May	Jun	Jul	Aug	Sep	Oct	Nov	Dec	Jan	Feb	Mar	Total	%
Discharged	684	851	848	794	769	891	756	682	660	707	665	655	8962	62
Referral/follow-up	226	273	230	238	197	256	224	185	165	226	210	191	2621	18
Admitted	202	255	224	217	237	212	182	190	159	185	148	156	2367	16
Other	45	58	39	42	45	36	19	22	24	42	52	31	455	3
Total	1157	1437	1341	1291	1248	1395	1181	1079	1008	1160	1075	1033	14405	100

Table 4: Wythenshawe Hospital ED: Total injury attendances by method of disposal and injury group (excluding other injury), April 2012 to March 2013

Disposal	Assault		Burns and scalds		DSH		Fall		RTC		Sports injury		Total	
	n	%	n	%	n	%	n	%	n	%	n	%	n	%
Discharged	523	66	294	52	161	38	4900	58	1576	81	1491	66	8945	62
Referral/follow-up	121	15	199	35	46	11	1586	19	108	6	555	25	2615	18
Admitted	117	15	46	8	195	45	1730	21	154	8	122	5	2364	16
Other	34	4	24	4	27	6	182	2	102	5	86	4	455	3
Total	795	100	563	100	429	100	8398	100	1940	100	2254	100	14379	100

¹ Please note that all numbers less than five have been suppressed in line with patient confidentiality and if there is only one number <5 in a category then two numbers will be suppressed at the next level.

² White=Irish, British, other white background; Mixed=white and black, white and Asian, mixed any other; Black=African, Caribbean, other black.

³ Admitted=admitted to ED bed/became a lodged patient of the same health care provider; Discharged=discharged - did not require any follow-up treatment; Referral/follow-up=discharged - follow-up treatment to be provided by GP, referred to ED clinic, referred to fracture clinic, referred to other out-patient clinic, transferred to other health care provider, referred to other health care professional; Other=died in department, left department before being treated, left department having refused treatment, other.

Table 5: Wythenshawe Hospital ED: Total injury attendances by mode of arrival and month, April 2012 to March 2013

Arrival mode	Apr	May	Jun	Jul	Aug	Sep	Oct	Nov	Dec	Jan	Feb	Mar	Total	%
Other	859	1111	1006	957	912	1060	837	798	720	851	794	764	10669	74
Ambulance	298	326	335	334	336	335	344	281	288	309	281	269	3736	26
Total	1157	1437	1341	1291	1248	1395	1181	1079	1008	1160	1075	1033	14405	100

Table 6: Wythenshawe Hospital ED: Total injury attendances by location of incident and injury group (excluding other injury), April 2012 to March 2013¹

Location	Assault		Burns & scalds		DSH		Fall		RTC		Sports injury		Total	
	n	%	n	%	n	%	n	%	n	%	n	%	n	%
Home	188	24	323	57	150	35	4133	49	0	0	0	0	4794	33
Sport	29	4	<10	2	***	0	396	5	0	0	2254	100	2690	19
Not recorded	192	24	122	22	232	54	1787	21	0	0	0	0	2333	16
RTC	0	0	***	1	0	0	<50	1	1940	100	0	0	1993	14
Public place	210	26	26	5	32	7	958	11	0	0	0	0	1226	9
Street	<75	9	***	1	***	1	319	4	0	0	0	0	398	3
School/college	18	2	<10	1	***	0	379	5	0	0	0	0	405	3
Work	<30	4	58	10	***	0	205	2	0	0	0	0	292	2
Another's home	39	5	12	2	6	1	154	2	0	0	0	0	211	1
Bar/Pub	<20	2	0	0	***	0	13	0	0	0	0	0	30	0
Club	***	0	0	0	0	0	<10	0	0	0	0	0	7	0
Total	795	100	563	100	429	100	8398	100	1940	100	2254	100	14379	100

Table 7: Wythenshawe Hospital ED: Assault attendances by gender, arrival mode and age group, April 2012 to March 2013¹

Injury type	Assault attendees (n=794)		All injuries % (n=14,405)
	n	%	%
Gender			
Female	237	30	47
Male	558	70	53
Arrival mode			
Ambulance	223	28	26
Other	572	72	74
Age group			
0 - 4	***	0	9
5-19	178	22	22
20 – 34	365	46	24
35 - 49	185	23	15
50 - 64	52	7	11
65 plus	<15	2	20

Published August 2013

Jennifer Brizell (TIIG researcher)

Centre for Public Health, Faculty of Education, Health & Community, Liverpool John Moores University

2nd Floor, Henry Cotton Campus, 15-21 Webster Street, Liverpool, L3 2ET

Tel: 0151 231 4500 Email: j.s.brizell@ljmu.ac.uk

Website: www.tiig.info (please note all data requests should be made through the TIIG website)

¹ Please note that all numbers less than five have been suppressed in line with patient confidentiality and if there is only one number <5 in a category then two numbers will be suppressed at the next level.