

Blackpool Victoria Hospital Emergency Department

Monthly Bulletin: April 2009 to March 2010

This bulletin provides a breakdown of all attendancesⁱ at Blackpool Victoria Hospital Emergency Department (ED) between April 2009 and March 2010.

Between April 2009 and March 2010 there were 91,248 attendances to Blackpool Victoria Hospital ED. The month with the highest attendance was July with 8,422 attendances (**Figure 1**). There were more male than female attendances presenting at Blackpool Victoria Hospital ED (males=47,421; 52%).

Figure 2 illustrates age group of ED attendances for each month. The majority of ED attendances were aged 30-59 (n=29,131; 32%) and 28% of attendances were over 60 years old (n=26,078). Most ED attendances were self-referred (56%) or referred by an emergency call/ambulance (33%) (**Table 1**).

Table 2 details the injury group of ED attendances. The majority (90%) of attendances were recorded as other accident. Sports injury accounted for 3% of attendances, road traffic collisions (RTC) 3% and assaults 3%.

Table 3 shows the location of incident for ED attendances. It shows that more than half of incidents occurred in the home (58%), and nearly a fifth (18%) occurred in public places.

The discharge destination for ED attendances is displayed in **Table 4**. It indicates that over a third

(35%) of attendances were discharged with no follow-up treatment. Almost a quarter (23%) of attendances were discharged into the care of their GP and one in five (20%) were admitted into hospital.

Assault attendances

Between April 2009 and March 2010 there were 2,365 assault attendances to Blackpool Victoria Hospital ED. The month with the highest attendance was August with 262 attendances (**Figure 3**). There were more male than female assault attendances presenting at Blackpool Victoria Hospital ED (males=1,779; 75%).

Table 5 details the age group of assault attendances for each month. The majority of ED assault attendances were aged 15-29 (n=1,266; 54%) and 29% were 30-59 years old (n=678).

Table 6 shows the location of incident for assault attendances. It shows more than half (52%) occurred in a public place, with one in five (20%) occurring in the home.

Table 7 illustrates the general discharge destination for assault attendances to Blackpool Victoria Hospital ED. More than four in ten (45%) were discharged without follow-up treatment or required follow-up treatment (40%). Just under one in twenty (3%) assault attendances were admitted to hospital.

Figure 1: Gender of ED attendances by month, April 2009 to March 2010

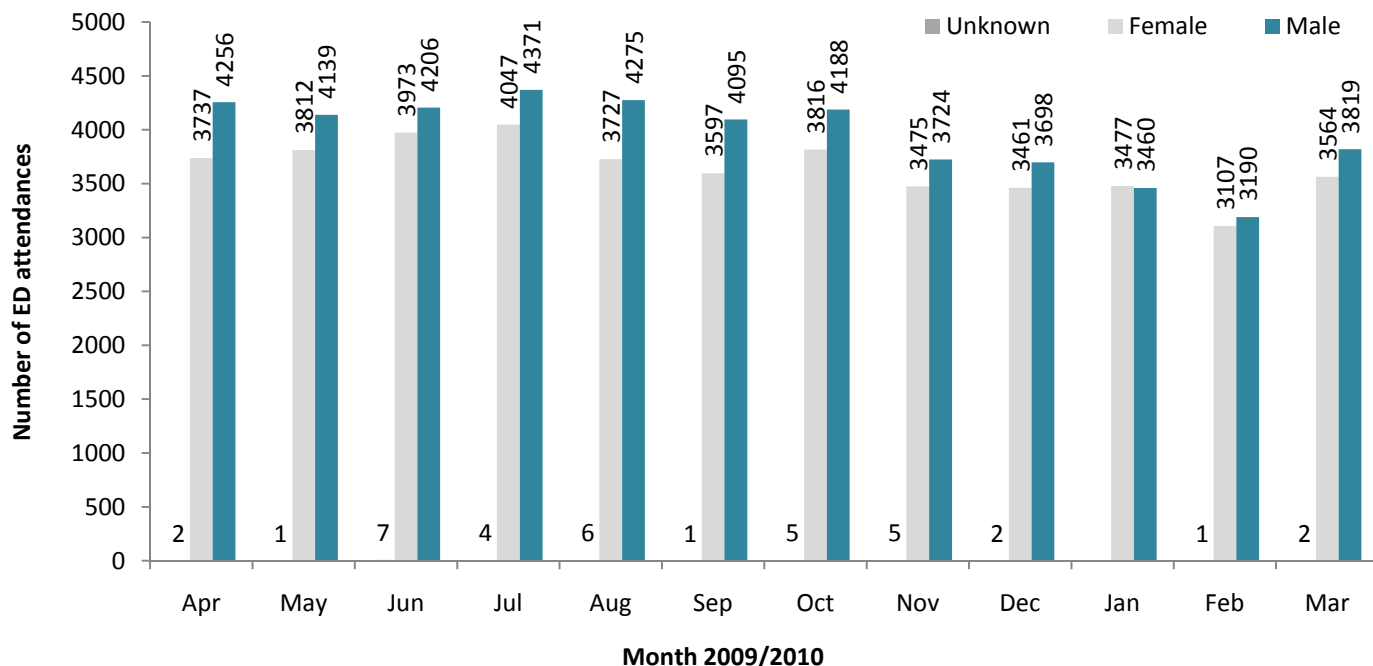


Figure 2: Age group of ED attendances by month, April 2009 to March 2010

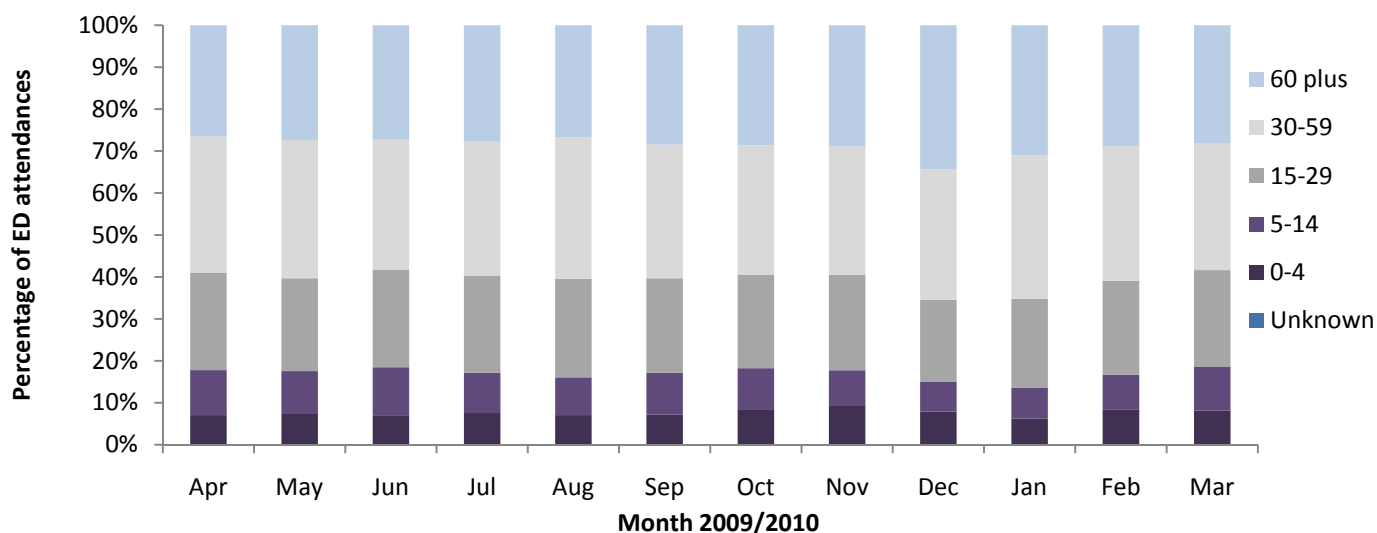


Table 1: ED attendances by source of referral and month, April 2009 to March 2010²³

Source of referral	Apr	May	Jun	Jul	Aug	Sep	Oct	Nov	Dec	Jan	Feb	Mar	Total	%
Self referral	4712	4587	4912	4966	4629	4323	4444	3899	3590	3685	3386	3989	51122	56
Emergency call/ambulance	2429	2431	2432	2577	2561	2539	2692	2477	2801	2505	2196	2505	30145	33
Other referrer	173	229	183	207	153	172	198	256	189	181	144	200	2285	3
Walk-in centre	177	202	186	168	183	174	163	91	93	114	123	140	1814	2
GP	120	122	130	145	143	173	159	138	130	143	152	177	1732	2
FCMS	67	54	53	59	66	47	54	75	80	67	70	62	754	1
Employer	71	61	55	74	65	58	66	65	67	59	45	56	742	1
Police	78	61	57	79	67	43	45	53	50	55	62	54	704	1
NHS Direct	83	56	50	30	56	55	61	52	45	55	46	57	646	1
ED staff	36	42	27	51	46	49	47	37	62	40	41	48	526	1
Educational establishment	20	66	77	32	***	35	46	28	29	13	17	57	420	0
Other hospital	16	24	12	18	21	18	19	20	19	9	12	28	216	0
Prison service	10	6	***	9	10	***	8	***	***	6	***	***	62	0
Optician	***	7	***	***	6	***	***	9	***	***	***	8	57	0
LA/social services	***	***	***	***	***	***	***	***	***	***	***	***	23	0
Total	7995	7952	8186	8422	8008	7693	8009	7204	7161	6936	6298	7384	91248	100

Table 2: ED attendances by injury group and month, April 2009 to March 2010⁴

Patient group	Apr	May	Jun	Jul	Aug	Sep	Oct	Nov	Dec	Jan	Feb	Mar	Total	%
Other injury	7116	7103	7335	7604	7154	6844	7181	6464	6537	6332	5605	6528	81803	90
Sports injury	316	215	240	204	189	282	243	189	118	121	216	350	2683	3
Assault	213	248	249	219	262	216	167	165	160	175	130	161	2365	3
RTC	180	210	193	209	202	201	260	214	187	135	180	171	2342	3
Overdose	136	144	136	156	150	122	135	151	132	141	131	127	1661	2
Deliberate self-harm	34	32	33	30	51	28	23	21	27	32	36	47	394	0
Total	7995	7952	8186	8422	8008	7693	8009	7204	7161	6936	6298	7384	91248	100

Table 3: ED attendances by location of incident and month, April 2009 to March 2010

Location	Apr	May	Jun	Jul	Aug	Sep	Oct	Nov	Dec	Jan	Feb	Mar	Total	%
Home	4502	4559	4416	4658	4435	4061	4739	4521	4648	4245	3914	4461	53159	58
Public place	1708	1571	1705	1538	1772	1538	1402	944	1067	1340	949	1255	16789	18
Other	1244	1260	1394	1694	1438	1520	1298	1187	1020	962	1016	1003	15036	16
Workplace	368	335	365	367	356	347	353	293	249	248	253	300	3834	4
Educational establishment	172	227	306	165	7	227	217	258	176	140	165	365	2425	3
Unknown	***	***	***	***	***	***	***	***	***	***	***	***	5	0
Total	7995	7952	8186	8422	8008	7693	8009	7204	7161	6936	6298	7384	91248	100

Table 4: ED attendances by discharge destination and month, April 2009 to March 2010⁵

Discharge destination	Apr	May	Jun	Jul	Aug	Sep	Oct	Nov	Dec	Jan	Feb	Mar	Total	%
Discharged - no follow-up	2724	2780	2987	3101	3169	2972	2923	2421	2282	2194	2162	2466	32181	35
Refer to GP	1924	1829	1869	1868	1653	1646	1884	1778	1684	1500	1555	1794	20984	23
Admissions	1508	1559	1498	1583	1481	1474	1649	1584	1745	1645	1319	1544	18589	20
Fracture clinic	516	540	526	494	479	505	436	365	433	584	351	409	5638	6
Out-patient department	276	268	296	318	295	264	294	314	294	297	238	326	3480	4
Did not wait	369	339	368	364	329	247	245	229	203	201	198	301	3393	4
ED clinic	279	214	279	295	217	256	237	215	217	242	200	236	2887	3
Own discharge	70	85	66	74	58	37	56	48	55	36	35	47	667	1
Transfer to other hospital	43	49	46	38	40	61	52	50	47	43	37	31	537	1
Follow up at local hospital	48	53	37	57	35	38	41	20	24	20	12	40	425	0
Left - before treatment	40	34	48	33	39	26	16	21	29	17	25	30	358	0
Community psychiatric nurse	25	26	13	21	25	30	22	14	19	22	33	19	269	0
Physiotherapist	43	25	23	28	24	27	13	21	11	16	16	22	269	0
Practice nurse	25	22	15	25	33	9	8	13	12	15	11	11	199	0
Mortuary	13	14	17	17	13	14	18	18	18	18	16	19	195	0
Removed by police	15	19	12	17	15	21	11	14	17	15	20	14	190	0
DVT practitioner	10	18	15	12	16	9	21	13	16	14	10	19	173	0
Dentist	20	13	6	17	14	15	13	13	10	13	15	12	161	0
Left - refused treatment	12	20	24	15	13	7	20	10	9	5	***	14	153	0
Not registered with GP	6	15	12	12	23	13	21	12	11	7	12	8	152	0
District nurse	9	6	6	13	8	5	14	5	11	12	7	6	102	0
Alcohol liaison service	5	***	***	***	9	***	***	7	6	8	8	5	63	0
Health visitor	5	7	5	9	9	6	***	7	***	***	7	***	62	0
Other	5	7	7	***	9	***	7	8	***	***	***	***	62	0
Social services	***	***	5	***	***	5	***	***	***	***	***	***	31	0
FCMS	***	***	***	5	***	***	***	***	***	***	***	***	28	0
Total	7995	7952	8186	8422	8008	7693	8009	7204	7161	6936	6298	7384	91248	100

Assaults

Figure 3: Number of ED assault attendances by gender and month, April 2009 to March 2010

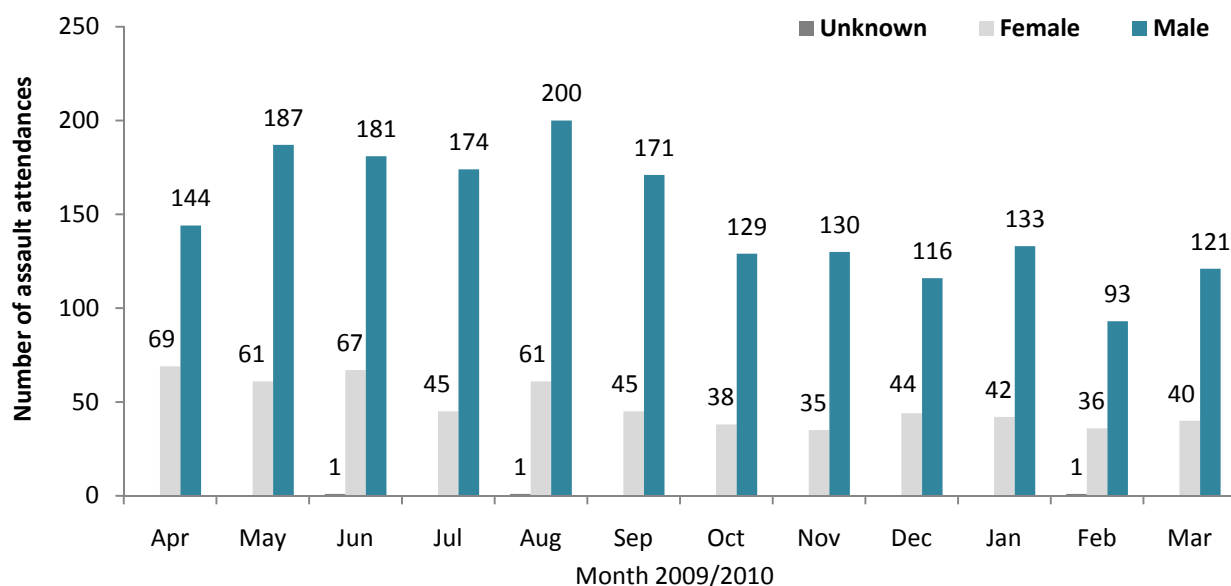


Table 5: ED assault attendances by age group and month, April 2009 to March 2010

Age group	Apr	May	Jun	Jul	Aug	Sep	Oct	Nov	Dec	Jan	Feb	Mar	Total	%
0-4	***	***	***	***	***	***	***	***	***	***	***	***	***	0
15-29	118	143	150	130	136	123	103	107	83	68	52	53	1266	54
30-59	76	85	73	69	108	79	54	47	65	6	7	9	678	29
5-14	14	12	19	12	9	11	7	9	10	99	71	92	365	15
60 plus	5	8	7	8	5	***	***	***	***	***	***	***	49	2
Unknown	***	***	***	***	***	***	***	***	***	***	***	***	***	0
Total	213	248	249	219	262	216	167	165	160	175	130	161	2365	100

Table 6: ED assault attendances by location of incident and month, April 2009 to March 2010

Location	Apr	May	Jun	Jul	Aug	Sep	Oct	Nov	Dec	Jan	Feb	Mar	Total	%
Public place	123	141	149	132	119	105	104	78	70	77	61	81	1240	52
Other	38	60	38	45	75	56	25	45	34	46	35	32	529	22
Home	42	42	49	34	57	37	33	25	45	44	29	38	475	20
Workplace	***	***	***	***	***	13	***	12	5	***	***	***	69	3
Educational establishment	***	***	***	***	***	5	***	5	6	***	***	***	52	2
Total	213	248	249	219	262	216	167	165	160	175	130	161	2365	100

Table 7: ED assault attendances by discharge destination and month, April 2009 to March 2010

Discharge destination	Apr	May	Jun	Jul	Aug	Sep	Oct	Nov	Dec	Jan	Feb	Mar	Total	%
Discharged	97	103	92	92	139	108	73	76	70	67	67	74	1058	45
Follow-up	87	100	105	88	89	81	74	59	75	85	47	64	954	40
Other	26	41	46	33	27	22	16	23	14	13	13	17	291	12
Admitted	***	***	6	6	7	5	***	7	***	10	***	6	62	3
Total	213	248	249	219	262	216	167	165	160	175	130	161	2365	100

Published June 2010

Johnathan Rooney (Lancashire TIIG Officer)

Centre for Public Health, Liverpool John Moores University, 5th Floor, Kingsway House, Liverpool, L3 2AJ

Tel: 0151 231 8763 Email: j.rooney@ljmu.ac.uk

Website: www.tiig.info (please note data requests should be made through the website)

¹ For other EDs, TIIG reports on injuries only. However, this report includes all attendances at Blackpool Victoria Hospital ED. This is due to the medical and injury attendances being categorised within the patient group 'other'.

injury groups amongst attendances at Aintree AED which makes it difficult to analyse injury attendances separately

² GP=general practitioner, LA=local authority and FCMS=Flyde Coast Medical Services Ltd

³ Please note that all numbers less than five have been suppressed (with ***) in line with patient confidentiality; and if there is only one number less than five in a category then two numbers will be suppressed to prevent back calculations from totals.

⁴ Due to low numbers firework injuries have been included under "other".

⁵ DVT=deep vein thrombosis.