

Blackpool Victoria Hospital Emergency Department

Monthly Bulletin: January to December 2009

This bulletin provides a breakdown of all attendancesⁱ at Blackpool Victoria Hospital Emergency Department (ED) between January and December 2009.

Between January and December 2009 there were 92,036 attendances to Blackpool Victoria Hospital ED. The month with the highest attendance was July with 8,422 attendances (**Figure 1**). There were more male than female attendances presenting at Blackpool Victoria Hospital ED (males=48,160; 52%).

Figure 2 illustrates age group of ED attendances for each month. The majority of ED attendances were aged 30-59 (n=29,261; 32%) and 28% of attendances were over 60 years old (n=26,100). Most ED attendances were self-referred (56%) or referred by an emergency call/ambulance (32%) (**Table 1**).

Table 2 details the injury group of ED attendances. The majority (89%) of attendances were recorded as other accident. Of those injury groups recorded, sports injury accounted for 3% of attendances, road traffic collisions (RTC) 3% and assaults 3%.

Table 3 shows the location of incident for ED attendances. It shows that more than half of incidents occurred in the home (58%), and nearly a fifth (19%) occurred in public places.

The discharge destination for ED attendances is displayed in **Table 4**. It indicates that over a third

(36%) of attendances were discharged with no follow-up treatment. A quarter (23%) of attendances were discharged into the care of their GP and one in five (20%) were admitted into hospital.

Assault attendances

Between January and December 2009 there were 2,511 assault attendances to Blackpool Victoria Hospital ED. The month with the highest attendance was August with 262 attendances (**Figure 3**). There were more male than female assault attendances presenting at Blackpool Victoria Hospital ED (males=1,885; 75%).

Table 5 details the age group of assault attendances for each month. The majority of ED assault attendances were aged 15-29 (n=1,445; 58%) and 34% were 30-59 years old (n=866).

Table 6 shows the location of incident for assault attendances. It shows more than half (54%) occurred in a public place, with one in five (20%) occurring in the home.

Table 7 illustrates the general discharge destination for assault attendances to Blackpool Victoria Hospital ED. More than four in ten (44%) were discharged without follow-up treatment or required follow-up treatment (41%). Just under one in twenty (3%) assault attendances were admitted to hospital.

Figure 1: Gender of ED attendances by month, January to December 2009

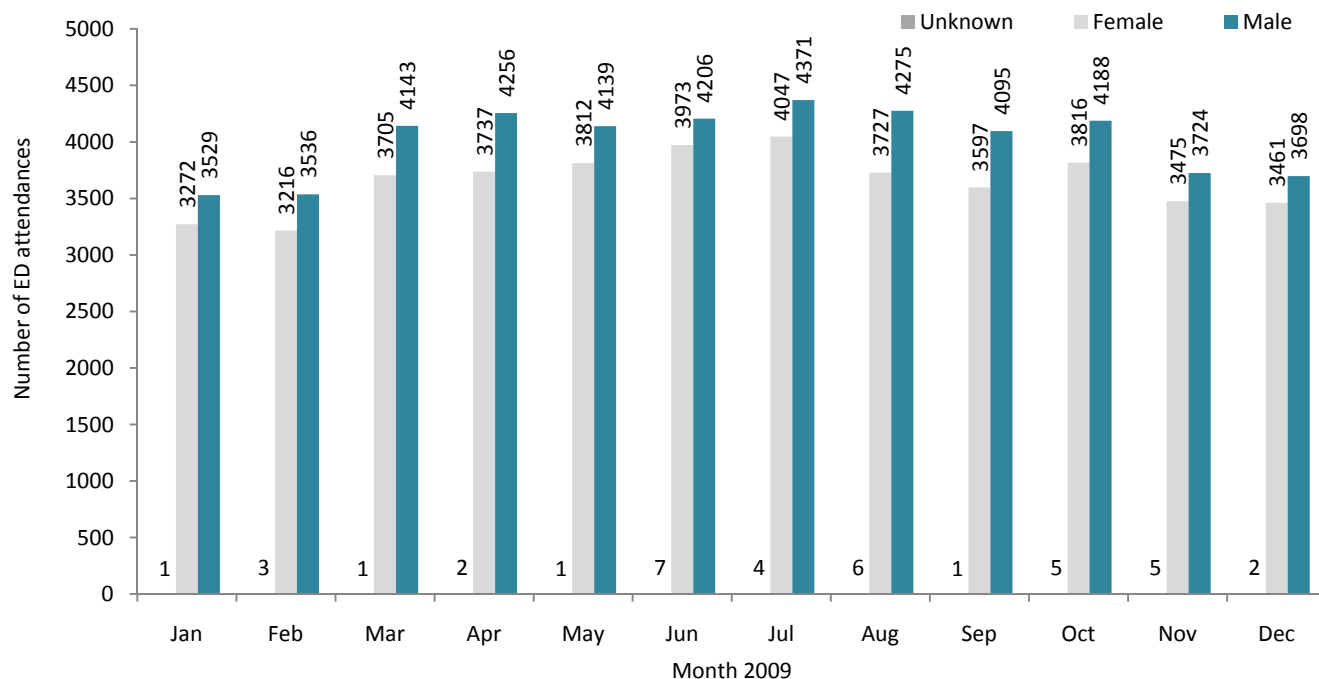


Figure 2: Age group of ED attendances by month, January to December 2009

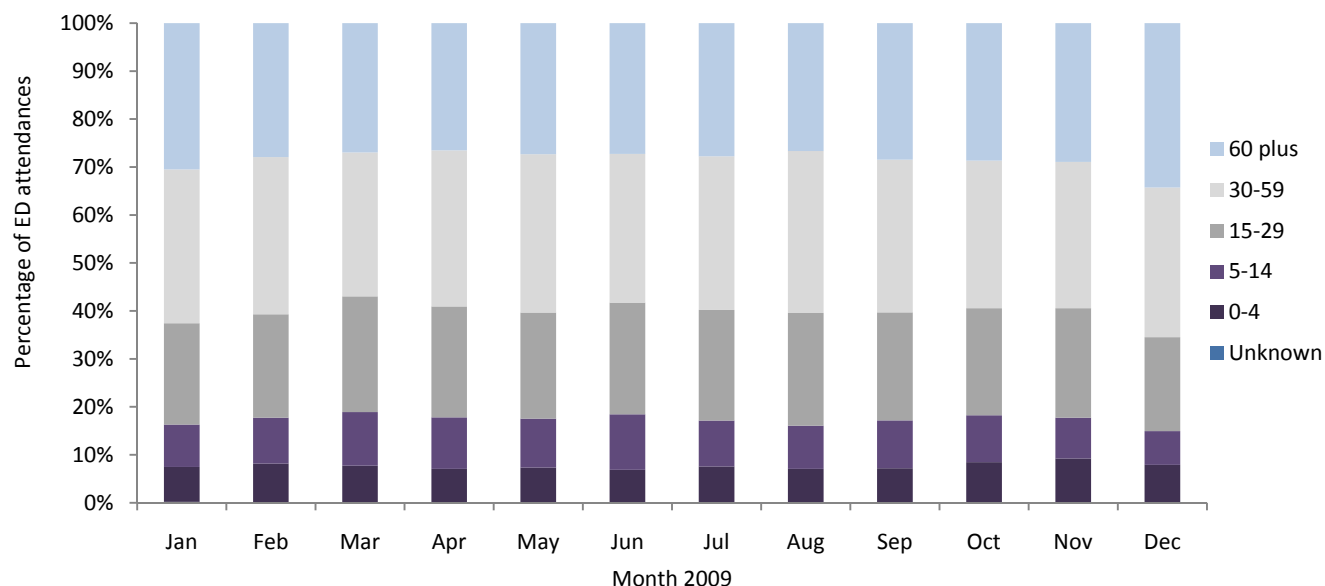


Table 1: ED attendances by source of referral and month, January to December 2009²³

Source of referral	Jan	Feb	Mar	Apr	May	Jun	Jul	Aug	Sep	Oct	Nov	Dec	Total	%
Self-referral	3609	3847	4479	4712	4587	4912	4966	4629	4323	4444	3899	3590	51997	56
Emergency call/ambulance	2337	2125	2384	2429	2431	2432	2577	2561	2539	2692	2477	2801	29785	32
Other referrer	208	181	262	173	229	183	207	153	172	198	256	189	2411	3
Walk-in centre	126	96	140	177	202	186	168	183	174	163	91	93	1799	2
GP	153	148	154	120	122	130	145	143	173	159	138	130	1715	2
Employer	78	82	104	71	61	55	74	65	58	66	65	67	846	1
FCMS	72	58	53	67	54	53	59	66	47	54	75	80	738	1
Police	72	54	63	78	61	57	79	67	43	45	53	50	722	1
NHS Direct	47	61	52	83	56	50	30	56	55	61	52	45	648	1
Educational establishment	30	43	99	20	66	77	32	***	35	46	28	29	505	1
ED staff	37	27	25	36	42	27	51	46	49	47	37	62	486	1
Other hospital	22	16	17	16	24	12	18	21	18	19	20	19	222	0
Prison service	6	10	8	10	6	***	9	10	***	8	***	***	78	0
Optician	***	***	***	***	7	***	***	6	***	***	9	***	52	0
LA/social services	***	5	5	***	***	***	***	***	***	***	***	***	32	0
Total	6802	6755	7849	7995	7952	8186	8422	8008	7693	8009	7204	7161	92036	100

Table 2: ED attendances by injury group and month, January to December 2009⁴

Patient group	Jan	Feb	Mar	Apr	May	Jun	Jul	Aug	Sep	Oct	Nov	Dec	Total	%
Other	6037	6008	6914	7116	7103	7335	7604	7154	6844	7181	6464	6537	82297	89
Sports injury	190	206	334	316	215	240	204	189	282	243	189	118	2726	3
Assault	218	178	216	213	248	249	219	262	216	167	165	160	2511	3
RTC	176	192	207	180	210	193	209	202	201	260	214	187	2431	3
Overdose	146	132	145	136	144	136	156	150	122	135	151	132	1685	2
Deliberate self-harm	35	39	33	34	32	33	30	51	28	23	21	27	386	0
Total	6802	6755	7849	7995	7952	8186	8422	8008	7693	8009	7204	7161	92036	100

Table 3: ED attendances by location of incident and month, January to December 2009

Location	Jan	Feb	Mar	Apr	May	Jun	Jul	Aug	Sep	Oct	Nov	Dec	Total	%
Home	4251	4183	4607	4502	4559	4416	4658	4435	4061	4739	4521	4648	53580	58
Public place	1075	1236	1471	1708	1571	1705	1538	1772	1538	1402	944	1067	17027	19
Other	930	807	1076	1244	1260	1394	1694	1438	1520	1298	1187	1020	14868	16
Workplace	302	307	372	368	335	365	367	356	347	353	293	249	4014	4
Educational establishment	243	221	319	172	227	306	165	7	227	217	258	176	2538	3
Unknown	***	***	***	***	***	***	***	***	***	***	***	***	9	0
Total	6802	6755	7849	7995	7952	8186	8422	8008	7693	8009	7204	7161	92036	100

Table 4: ED attendances by discharge destination and month, January to December 2009⁵

Discharge destination	Jan	Feb	Mar	Apr	May	Jun	Jul	Aug	Sep	Oct	Nov	Dec	Total	%
Discharged - no follow-up	2270	2432	2880	2724	2780	2987	3101	3169	2972	2923	2421	2282	32941	36
GP	1629	1597	1770	1924	1829	1869	1868	1653	1646	1884	1778	1684	21131	23
Admissions	1527	1372	1485	1508	1559	1498	1583	1481	1474	1649	1584	1745	18465	20
Fracture clinic	431	384	499	516	540	526	494	479	505	436	365	433	5608	6
Out-patient department	233	227	290	276	268	296	318	295	264	294	314	294	3369	4
Did not wait	178	219	278	369	339	368	364	329	247	245	229	203	3368	4
ED clinic	184	228	263	279	214	279	295	217	256	237	215	217	2884	3
Own discharge	51	45	66	70	85	66	74	58	37	56	48	55	711	1
Transfer to other hospital	42	39	57	43	49	46	38	40	61	52	50	47	564	1
Follow-up at local hospital	24	19	29	48	53	37	57	35	38	41	20	24	425	0
Left - before treatment	38	22	30	40	34	48	33	39	26	16	21	29	376	0
Physiotherapist	45	37	45	43	25	23	28	24	27	13	21	11	342	0
Community psychiatric nurse	31	29	27	25	26	13	21	25	30	22	14	19	282	0
Practice nurse	11	12	27	25	22	15	25	33	9	8	13	12	212	0
Mortuary	23	10	19	13	14	17	17	13	14	18	18	18	194	0
Removed by police	8	18	20	15	19	12	17	15	21	11	14	17	187	0
DVT practitioner	14	16	16	10	18	15	12	16	9	21	13	16	176	0
Left - refused treatment	9	13	11	12	20	24	15	13	7	20	10	9	163	0
Dentist	15	12	15	20	13	6	17	14	15	13	13	10	163	0
Not registered with GP	***	6	6	6	15	12	12	23	13	21	12	11	141	0
District nurse	12	7	8	9	6	6	13	8	5	14	5	11	104	0
Health visitor	5	7	***	5	7	5	9	9	6	***	7	***	65	0
Other	***	***	***	5	7	7	***	9	***	7	8	***	55	0
Alcohol liaison service	5	***	***	5	***	***	***	9	***	***	7	6	49	0
Social services	5	***	***	***	***	5	***	***	5	***	***	***	32	0
FCMS	5	***	***	***	***	***	5	***	***	***	***	***	29	0
Total	6802	6755	7849	7995	7952	8186	8422	8008	7693	8009	7204	7161	92036	100

Assaults

Figure 3: Number of ED assault attendances by gender and month, January to December 2009

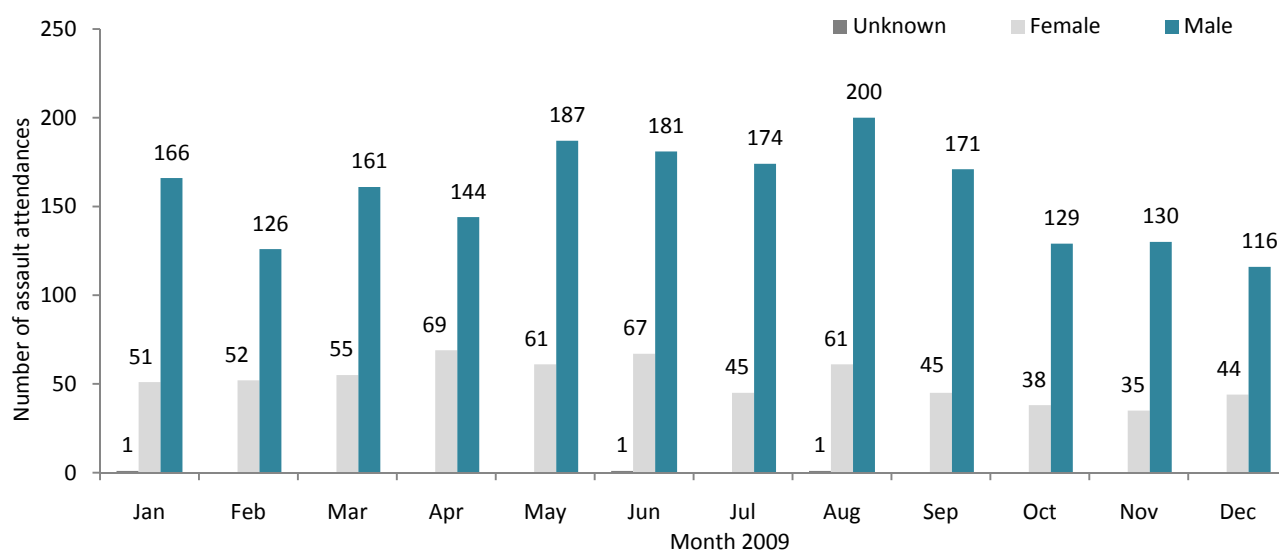


Table 5: ED assault attendances by age group and month, January to December 2009

Age group	Jan	Feb	Mar	Apr	May	Jun	Jul	Aug	Sep	Oct	Nov	Dec	Total	%
Unknown	***	***	***	***	***	***	***	***	***	***	***	***	***	0
0-4	***	***	***	***	***	***	***	***	***	***	***	***	***	0
5-14	10	7	11	14	12	19	12	9	11	7	9	10	131	5
15-29	131	97	124	118	143	150	130	136	123	103	107	83	1445	58
30-59	71	65	74	76	85	73	69	108	79	54	47	65	866	34
60 plus	***	9	6	5	8	7	8	5	***	***	***	***	62	2
Total	218	178	216	213	248	249	219	262	216	167	165	160	2511	100

Table 6: ED assault attendances by location of incident and month, January to December 2009

Location	Jan	Feb	Mar	Apr	May	Jun	Jul	Aug	Sep	Oct	Nov	Dec	Total	%
Public place	122	86	126	123	141	149	132	119	105	104	78	70	1355	54
Other	44	32	42	38	60	38	45	75	56	25	45	34	534	21
Home	40	51	38	42	42	49	34	57	37	33	25	45	493	20
Workplace	7	***	***	***	***	***	***	***	13	***	12	5	83	3
Educational establishment	5	***	***	***	***	***	***	***	5	***	5	6	46	2
Total	218	178	216	213	248	249	219	262	216	167	165	160	2511	100

Table 7: ED assault attendances by general discharge destination and month, January to December 2009

Discharge destination	Jan	Feb	Mar	Apr	May	Jun	Jul	Aug	Sep	Oct	Nov	Dec	Total	%
Discharged	89	78	83	97	103	92	92	139	108	73	76	70	1100	44
Follow-up	92	76	104	87	100	105	88	89	81	74	59	75	1030	41
Other	24	***	22	***	***	46	33	27	22	***	23	***	316	13
Admitted	13	***	7	***	***	6	6	7	5	***	7	***	65	3
Total	218	178	216	213	248	249	219	262	216	167	165	160	2511	100

Published April 2010

Dan Hungerford (North West TIIG Analyst)

Centre for Public Health, Liverpool John Moores University, 5th Floor, Kingsway House, Liverpool, L3 2AJ

Tel: 0151 231 8724 Email: d.j.hungerford@ljmu.ac.uk

Website: www.tiig.info (please note data requests should be made through the website)

¹ For other EDs, TIIG reports on injuries only. However, this report includes all attendances at Blackpool Victoria Hospital ED. This is due to the medical and injury attendances being categorised within the patient group 'other'.

injury groups amongst attendances at Aintree AED which makes it difficult to analyse injury attendances separately

² GP=general practitioner, LA=local authority and FCMS=Flyde Coast Medical Services Ltd

³ Please note that all numbers less than five have been suppressed (with ***) in line with patient confidentiality; and if there is only one number less than five in a category then two numbers will be suppressed to prevent back calculations from totals.

⁴ Due to low numbers fireworks injuries have been included under "other"

⁵ DVT=deep vein thrombosis.