

Blackpool Victoria Hospital Emergency Department

Monthly Bulletin: July 2009 to June 2010

This bulletin provides a breakdown of all attendancesⁱ at Blackpool Victoria Hospital Emergency Department (ED) between July 2009 and June 2010.

Between July 2009 and June 2010 there were 90,809 attendances to Blackpool Victoria Hospital ED. The month with the highest attendance was July with 8,422 attendances (**Figure 1**). There were more male than female attendances presenting at Blackpool Victoria Hospital ED (males=47,136; 52%).

Figure 2 illustrates age group of ED attendances for each month. The majority of ED attendances were aged 30-59 (n=28,830; 32%) and 29% of attendances were over 60 years old (n=26,414). Most ED attendances were self-referred (55%) or referred by an emergency call/ambulance (34%) (**Table 1**).

Table 2 details the injury group of ED attendances. The majority (90%) of attendances were recorded as other injury. Sports injury accounted for 3% of attendances, road traffic collisions (RTCs) 2% and assaults 2%.

Table 3 shows the location of incident for ED attendances. It shows that more than half of incidents occurred in the home (59%), and nearly a fifth (17%) occurred in public places.

The discharge destination for ED attendances is displayed in **Table 4**. It indicates that over a third

(35%) of attendances were discharged with no follow-up treatment. Almost a quarter (23%) of attendances were discharged into the care of their GP and over one in five (21%) were admitted into hospital.

Assault attendances

Between July 2009 and June 2010 there were 2,200 assault attendances to Blackpool Victoria Hospital ED. The month with the highest attendance was August with 262 attendances (**Figure 3**). There were more male than female assault attendances presenting at Blackpool Victoria Hospital ED (males=1,680; 76%).

Table 5 details the age group of assault attendances for each month. The majority of ED assault attendances were aged 15-29 (n=1,163; 53%) and 29% were 30-59 years old (n=642).

Table 6 shows the location of incident for assault attendances. It shows just under half (49%) occurred in a public place, with over one in five (21%) occurring in the home.

Table 7 illustrates the general discharge destination for assault attendances to Blackpool Victoria Hospital ED. More than four in ten (45%) were discharged without follow-up treatment or required follow-up treatment (40%). Just under one in twenty (3%) assault attendances were admitted to hospital.

Figure 1: Gender of ED attendances by month, July 2009 to June 2010

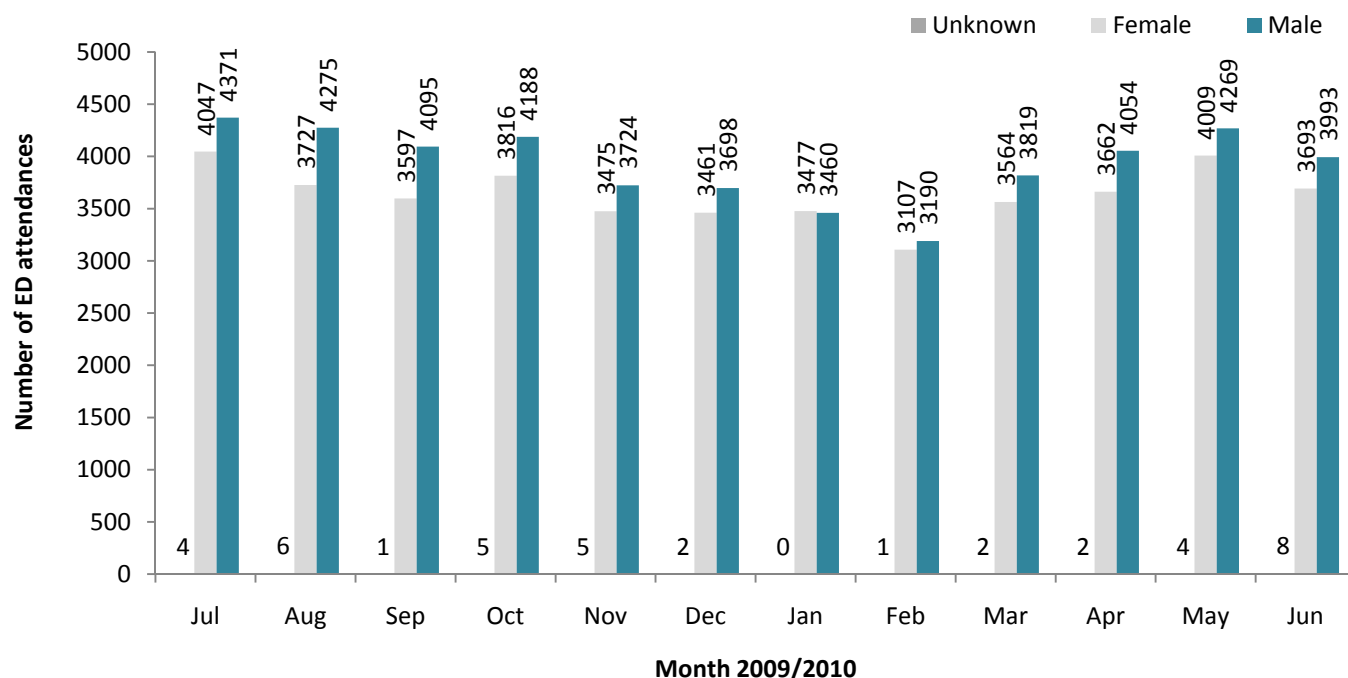


Figure 2: Age group of ED attendances by month, July 2009 to June 2010

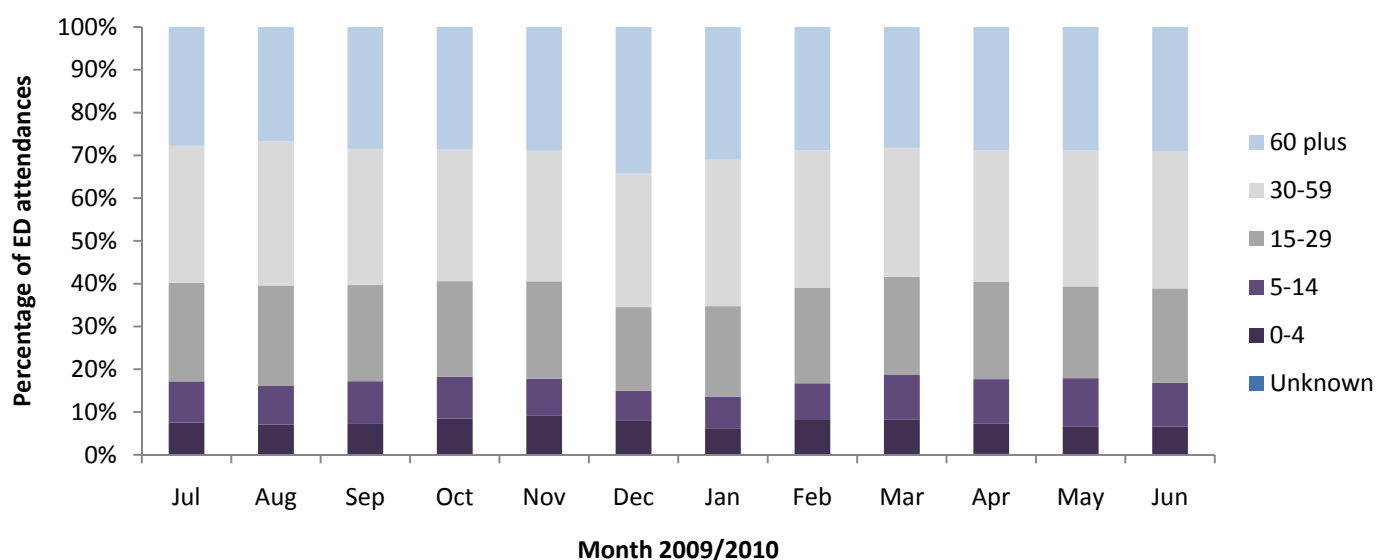


Table 1: ED attendances by source of referral and month, July 2009 to June 2010²³

Source of referral	Jul	Aug	Sep	Oct	Nov	Dec	Jan	Feb	Mar	Apr	May	Jun	Total	%
Self-referral	4966	4629	4323	4444	3899	3590	3685	3386	3989	4290	4596	4184	49981	55
Emergency call/ambulance	2577	2561	2539	2692	2477	2801	2505	2196	2505	2629	2827	2702	31011	34
Other referrer	207	153	172	198	256	189	181	144	200	212	198	146	2256	2
Walk-in centre	168	183	174	163	91	93	114	123	140	157	208	192	1806	2
GP	145	143	173	159	138	130	143	152	177	138	141	141	1780	2
FCMS	59	66	47	54	75	80	67	70	62	77	73	99	829	1
Police	79	67	43	45	53	50	55	62	54	58	67	57	690	1
Employer	74	65	58	66	65	67	59	45	56	36	43	44	678	1
NHS Direct	30	56	55	61	52	45	55	46	57	47	47	71	622	1
ED staff	51	46	49	47	37	62	40	41	48	38	22	23	504	1
Educational establishment	32	***	35	46	28	29	13	17	57	13	29	11	310	0
Other hospital	18	21	18	19	20	19	9	12	28	18	24	16	222	0
Optician	***	6	***	***	9	***	***	***	8	***	***	***	53	0
Prison service	9	10	***	8	***	***	6	***	***	***	***	***	47	0
LA/social services	***	***	***	***	***	***	***	***	***	***	***	***	20	0
Total	8422	8008	7693	8009	7204	7161	6936	6298	7384	7718	8282	7694	90809	100

Table 2: ED attendances by injury group and month, July 2009 to June 2010⁴

Patient group	Jul	Aug	Sep	Oct	Nov	Dec	Jan	Feb	Mar	Apr	May	Jun	Total	%
Other injury	7604	7154	6844	7181	6464	6537	6332	5605	6528	6903	7522	6996	81670	90
Sports injury	204	189	282	243	189	118	121	216	350	289	236	217	2654	3
RTC	209	202	201	260	214	187	135	180	171	162	176	139	2236	2
Assault	219	262	216	167	165	160	175	130	161	188	176	181	2200	2
Overdose	156	150	122	135	151	132	141	131	127	128	138	122	1633	2
Deliberate self-harm	30	51	28	23	21	27	32	36	47	48	34	39	416	0
Total	8422	8008	7693	8009	7204	7161	6936	6298	7384	7718	8282	7694	90809	100

Table 3: ED attendances by location of incident and month, July 2009 to June 2010

Location	Jul	Aug	Sep	Oct	Nov	Dec	Jan	Feb	Mar	Apr	May	Jun	Total	%
Home	4658	4435	4061	4739	4521	4648	4245	3914	4461	4519	4868	4406	53475	59
Other	1694	1438	1520	1298	1187	1020	962	1016	1003	1483	1619	1626	15866	17
Public place	1538	1772	1538	1402	944	1067	1340	949	1255	1245	1295	1180	15525	17
Workplace	367	356	347	353	293	249	248	253	300	297	262	306	3631	4
Educational establishment	165	7	227	217	258	176	140	165	365	174	237	176	2307	3
Unknown	***	***	***	***	***	***	***	***	***	***	***	***	5	0
Total	8422	8008	7693	8009	7203	7160	6935	6297	7384	7718	8282	7694	90809	100

Table 4: ED attendances by discharge destination and month, July 2009 to June 2010⁵

Discharge destination	Jul	Aug	Sep	Oct	Nov	Dec	Jan	Feb	Mar	Apr	May	Jun	Total	%
Discharged - no follow-up	3101	3169	2972	2923	2421	2282	2194	2162	2466	2598	2732	2633	31653	35
Referred to GP	1868	1653	1646	1884	1778	1684	1500	1555	1794	1783	1921	1919	20985	23
Admissions	1583	1481	1474	1649	1584	1745	1645	1319	1544	1593	1736	1395	18748	21
Fracture clinic	494	479	505	436	365	433	584	351	409	498	533	483	5570	6
Did not wait	364	329	247	245	229	203	201	198	301	359	419	356	3451	4
Out-patient department	318	295	264	294	314	294	297	238	326	285	252	249	3426	4
ED clinic	295	217	256	237	215	217	242	200	236	255	311	304	2985	3
Own discharge	74	58	37	56	48	55	36	35	47	59	62	56	623	1
Transfer to other hospital	38	40	61	52	50	47	43	37	31	36	57	42	534	1
Follow up at local hospital	57	35	38	41	20	24	20	12	40	26	39	26	378	0
Left - before treatment	33	39	26	16	21	29	17	25	30	48	46	31	361	0
Community psychiatric nurse	21	25	30	22	14	19	22	33	19	27	19	30	281	0
Physiotherapist	28	24	27	13	21	11	16	16	22	21	39	35	273	0
Mortuary	17	13	14	18	18	18	18	16	19	23	15	19	208	0
DVT practitioner	12	16	9	21	13	16	14	10	19	21	14	28	193	0
Removed by police	17	15	21	11	14	17	15	20	14	14	19	9	186	0
Practice nurse	25	33	9	8	13	12	15	11	11	12	13	11	173	0
Dentist	17	14	15	13	13	10	13	15	12	12	13	10	157	0
Not registered with GP	12	23	13	21	12	11	7	12	8	13	5	11	148	0
Left - refused treatment	15	13	7	20	10	9	5	***	14	6	12	11	126	0
District nurse	13	8	5	14	5	11	12	7	6	8	11	7	107	0
Alcohol liaison service	***	9	***	***	7	6	8	8	5	***	***	***	60	0
Other	***	9	***	7	8	***	***	***	***	7	***	***	58	0
Health visitor	9	9	6	***	7	***	***	7	***	***	***	6	55	0
Social services	***	***	5	***	***	***	***	***	***	***	***	***	8	0
FCMS	5	***	***	***	***	***	***	***	***	7	***	7	34	0
Total	8422	8008	7693	8009	7204	7161	6936	6298	7384	7718	8282	7694	90809	100

Assaults

Figure 3: Number of ED assault attendances by gender and month, July 2009 to June 2010

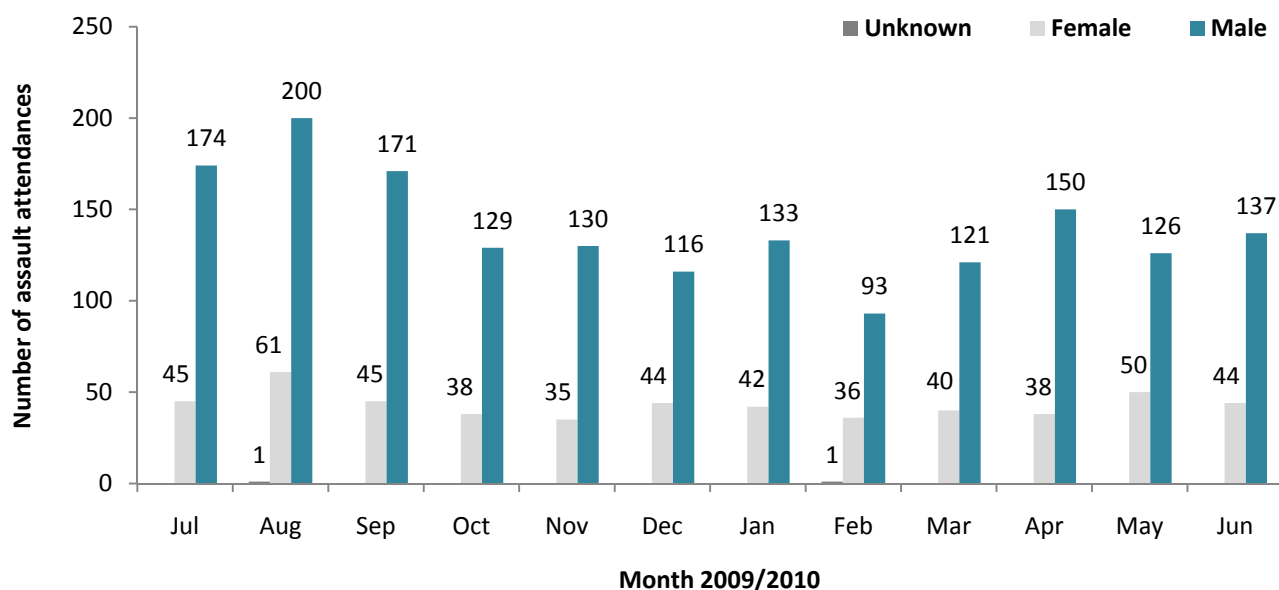


Table 5: ED assault attendances by age group and month, July 2009 to June 2010

Age group	Jul	Aug	Sep	Oct	Nov	Dec	Jan	Feb	Mar	Apr	May	Jun	Total	%
Unknown	***	***	***	***	***	***	***	***	***	***	***	***	***	0
0-4	***	***	***	***	***	***	***	***	***	***	***	***	5	0
5-14	12	9	11	7	9	10	99	71	92	7	12	8	347	16
15-29	130	136	123	103	107	83	68	52	53	107	91	110	1163	53
30-59	69	108	79	54	47	65	6	7	9	69	69	60	642	29
60 plus	8	5	***	***	***	***	***	***	***	5	***	***	40	2
Total	219	262	216	167	165	160	175	130	161	188	176	181	2200	100

Table 6: ED assault attendances by location of incident and month, July 2009 to June 2010

Location	Jul	Aug	Sep	Oct	Nov	Dec	Jan	Feb	Mar	Apr	May	Jun	Total	%
Public place	132	119	105	104	78	70	77	61	81	94	71	82	1074	49
Other	45	75	56	25	45	34	46	35	32	49	42	48	532	24
Home	34	57	37	33	25	45	44	29	38	35	53	42	472	21
Workplace	***	***	13	***	12	5	***	***	***	***	5	***	71	3
Educational establishment	***	***	5	***	5	6	***	***	***	***	5	***	51	2
Total	219	262	216	167	165	160	175	130	161	188	176	181	2200	100

Table 7: ED assault attendances by discharge destination and month, July 2009 to June 2010

Discharge destination	Jul	Aug	Sep	Oct	Nov	Dec	Jan	Feb	Mar	Apr	May	Jun	Total	%
Discharged	92	139	108	73	76	70	67	67	74	73	77	77	993	45
Follow-up	88	89	81	74	59	75	85	47	64	75	61	73	871	40
Other	33	27	22	***	23	***	13	***	17	33	28	***	266	12
Admitted	6	7	5	***	7	***	10	***	6	7	10	***	70	3
Total	219	262	216	167	165	160	175	130	161	188	176	181	2200	100

Published September 2010
 Johnathan Rooney (Lancashire TIIG Officer)
 Centre for Public Health, Liverpool John Moores University, 3rd Floor, Henry Cotton Campus, Liverpool, L3 2ET
 Tel: 0151 231 4513 Email: j.rooney@ljmu.ac.uk
 Website: www.tiig.info (please note data requests should be made through the website)

¹ For other EDs, TIIG reports on injuries only. However, this report includes all attendances at Blackpool Victoria Hospital ED. This is due to the medical and injury attendances being categorised within the patient group 'other'.

injury groups amongst attendances at Aintree AED which makes it difficult to analyse injury attendances separately

² GP=general practitioner, LA=local authority and FCMS=Flyde Coast Medical Services Ltd

³ Please note that all numbers less than five have been suppressed (with ***) in line with patient confidentiality; and if there is only one number less than five in a category then two numbers will be suppressed to prevent back calculations from totals.

⁴ Due to low numbers firework injuries have been included under "other".

⁵ DVT=deep vein thrombosis.