

Blackpool Victoria Hospital Emergency Department

Monthly Bulletin: October 2009 to September 2010

This bulletin provides a breakdown of all attendancesⁱ at Blackpool Victoria Hospital Emergency Department (ED) between October 2009 and September 2010.

Between October 2009 and September 2010 there were 87,792 attendances to Blackpool Victoria Hospital ED. The month with the highest attendance was May with 8,282 attendances (**Figure 1**). There were more male than female attendances presenting at Blackpool Victoria Hospital ED (males=45,338; 52%).

Figure 2 illustrates age group of ED attendances for each month. The majority of ED attendances were aged 30-59 (n=27,717; 32%) and 30% of attendances were over 60 years old (n=26,150). Most ED attendances were self-referred (52%) or referred by an emergency call/ambulance (36%) (**Table 1**).

Table 2 details the injury group of ED attendances. The majority (90%) of attendances were recorded as other injury. Sports injury accounted for 3% of attendances, road traffic collisions (RTCs) 2%, assaults 2% and overdose 2%.

Table 3 shows the location of incident for ED attendances. It shows that more than half of incidents occurred in the home (59%), and nearly a fifth (17%) occurred in public places.

The discharge destination for ED attendances is displayed in **Table 4**. It indicates that a third (33%) of attendances were discharged with no follow-up treatment. Almost a quarter (23%) of attendances were discharged into the care of their GP and over one in five (21%) were admitted into hospital.

Assault attendances

Between October 2009 and September 2010 there were 2,039 assault attendances to Blackpool Victoria Hospital ED. The month with the highest attendance was July with 220 attendances (**Figure 3**). There were more male than female assault attendances presenting at Blackpool Victoria Hospital ED (males=1,507; 74%).

Table 5 details the age group of assault attendances for each month. The majority of ED assault attendances were aged 15-29 (n=1,078; 53%) and 29% were 30-59 years old (n=587).

Table 6 shows the location of incident for assault attendances. It shows just under half (48%) occurred in a public place, with over one in five (22%) occurring in the home.

Table 7 illustrates the general discharge destination for assault attendances to Blackpool Victoria Hospital ED. More than four in ten (42%) were discharged without follow-up treatment or required follow-up treatment (40%). Just under one in twenty (3%) assault attendances were admitted to hospital.

Figure 1: Gender of ED attendances by month, October 2009 to September 2010

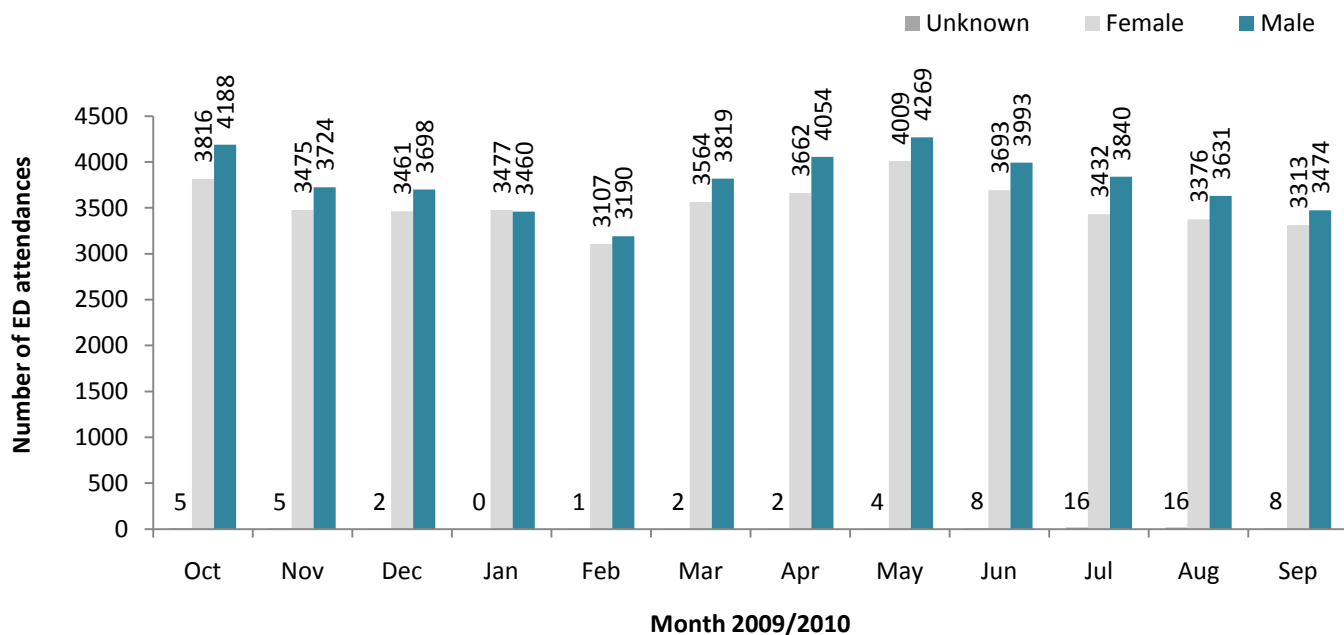


Figure 2: Age group of ED attendances by month, October 2009 to September 2010

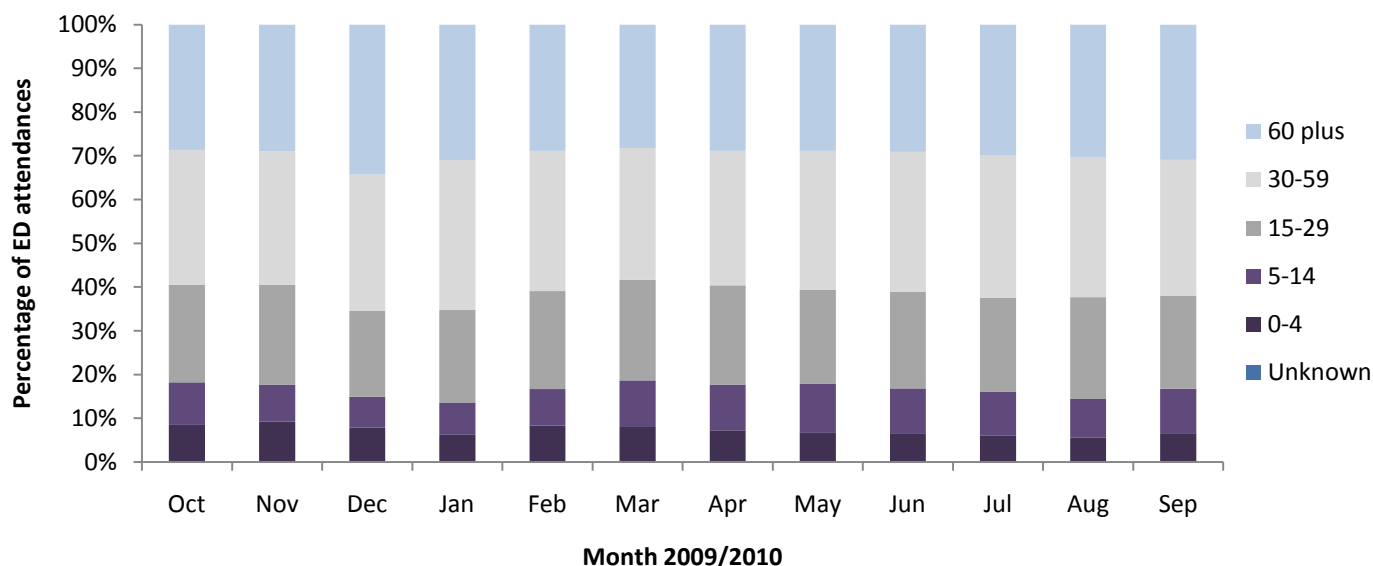


Table 1: ED attendances by source of referral and month, October 2009 to September 2010²³

Source of referral	Oct	Nov	Dec	Jan	Feb	Mar	Apr	May	Jun	Jul	Aug	Sep	Total	%
Self referral	4444	3899	3590	3685	3386	3989	4290	4596	4184	3194	3091	2906	45254	52
Emergency call/ambulance	2692	2477	2801	2505	2196	2505	2629	2827	2702	2900	2878	2688	31800	36
Other referrer	198	256	189	181	144	200	212	198	146	146	165	183	2218	3
GP	159	138	130	143	152	177	138	141	141	182	163	250	1914	2
Walk-in centre	163	91	93	114	123	140	157	208	192	161	166	195	1803	2
FCMS	54	75	80	67	70	62	77	73	99	425	316	329	1727	2
Employer	66	65	67	59	45	56	36	43	44	82	83	80	726	1
Police	45	53	50	55	62	54	58	67	57	64	47	45	657	1
NHS Direct	61	52	45	55	46	57	47	47	71	50	32	34	597	1
ED staff	47	37	62	40	41	48	38	22	23	46	44	41	489	1
Educational establishment	46	28	29	13	17	57	13	29	11	***	***	19	267	0
Other hospital	19	20	19	9	12	28	18	24	16	23	28	17	233	0
Optician	***	9	***	***	***	8	***	***	***	6	6	***	54	0
Prison service	8	***	***	6	***	***	***	***	***	***	***	***	30	0
LA/social services	***	***	***	***	***	***	***	***	***	***	***	7	23	0
Total	8009	7204	7161	6936	6298	7384	7718	8282	7694	7288	7023	6795	87792	100

Table 2: ED attendances by injury group and month, October 2009 to September 2010⁴

Injury group	Oct	Nov	Dec	Jan	Feb	Mar	Apr	May	Jun	Jul	Aug	Sep	Total	%
Other injury	7181	6464	6537	6332	5605	6528	6903	7522	6996	6514	6278	6023	78883	90
Sports injury	243	189	118	121	216	350	289	236	217	213	209	287	2688	3
RTC	260	214	187	135	180	171	162	176	139	145	192	167	2128	2
Assault	167	165	160	175	130	161	188	176	181	220	172	144	2039	2
Overdose	135	151	132	141	131	127	128	138	122	156	140	131	1632	2
Deliberate self-harm	23	21	27	32	36	47	48	34	39	40	32	43	422	0
Total	8009	7204	7161	6936	6298	7384	7718	8282	7694	7288	7023	6795	87792	100

Table 3: ED attendances by location of incident and month, October 2009 to September 2010

Location	Oct	Nov	Dec	Jan	Feb	Mar	Apr	May	Jun	Jul	Aug	Sep	Total	%
Home	4739	4521	4648	4245	3914	4461	4519	4868	4406	4086	3797	3849	52053	59
Other	1298	1187	1020	962	1016	1003	1483	1619	1626	1323	1432	1160	15129	17
Public place	1402	944	1067	1340	949	1255	1245	1295	1180	1369	1507	1247	14800	17
Workplace	353	293	249	248	253	300	297	262	306	338	270	273	3442	4
Educational establishment	217	258	176	140	165	365	174	237	176	169	6	242	2325	3
Unknown	***	***	***	***	***	***	***	***	***	***	11	24	43	0
Total	8009	7204	7161	6936	6298	7384	7718	8282	7694	7288	7023	6795	87792	100

Table 4: ED attendances by discharge destination and month, October 2009 to September 2010⁵

Discharge destination	Oct	Nov	Dec	Jan	Feb	Mar	Apr	May	Jun	Jul	Aug	Sep	Total	%
Discharged - no follow-up	2923	2421	2282	2194	2162	2466	2598	2732	2633	2432	2246	2294	29383	33
Refer to GP	1884	1778	1684	1500	1555	1794	1783	1921	1919	1768	1576	1421	20583	23
Admissions	1649	1584	1745	1645	1319	1544	1593	1736	1395	1441	1533	1559	18743	21
Fracture clinic	436	365	433	584	351	409	498	533	483	442	454	451	5439	6
Did not wait	245	229	203	201	198	301	359	419	356	345	329	260	3445	4
Out-patient department	294	314	294	297	238	326	285	252	249	223	204	202	3178	4
ED clinic	237	215	217	242	200	236	255	311	304	257	256	246	2976	3
Own discharge	56	48	55	36	35	47	59	62	56	54	75	39	622	1
Transfer to other hospital	52	50	47	43	37	31	36	57	42	58	52	46	551	1
Follow up at local hospital	41	20	24	20	12	40	26	39	26	33	46	45	372	0
Left - before treatment	16	21	29	17	25	30	48	46	31	35	32	34	364	0
Community psychiatric nurse	22	14	19	22	33	19	27	19	30	21	18	23	267	0
Physiotherapist	13	21	11	16	16	22	21	39	35	27	19	25	265	0
Mortuary	18	18	18	18	16	19	23	15	19	25	14	21	224	0
DVT practitioner	21	13	16	14	10	19	21	14	28	19	13	18	206	0
FCMS	***	***	***	***	***	***	7	***	7	40	75	41	183	0
Removed by police	11	14	17	15	20	14	14	19	9	11	20	16	180	0
Practice nurse	8	13	12	15	11	11	12	13	11	14	17	11	148	0
Dentist	13	13	10	13	15	12	12	13	10	***	8	***	126	0
Left - refused treatment	20	10	9	5	***	14	6	12	11	11	11	9	122	0
Not registered with GP	21	12	11	7	12	8	13	5	11	6	***	***	114	0
District nurse	14	5	11	12	7	6	8	11	7	6	7	9	103	0
Alcohol liaison service	***	7	6	8	8	5	***	***	***	8	9	6	69	0
Other	7	8	***	***	***	***	7	***	***	***	***	5	56	0
Health visitor	***	7	***	***	7	***	***	***	6	***	***	***	39	0
Social services	***	***	***	***	***	***	***	***	8	***	***	***	34	0
Total	8009	7204	7161	6936	6298	7384	7718	8282	7694	7288	7023	6795	87792	100

Assaults

Figure 3: Number of ED assault attendances by gender and month, October 2009 to September 2010

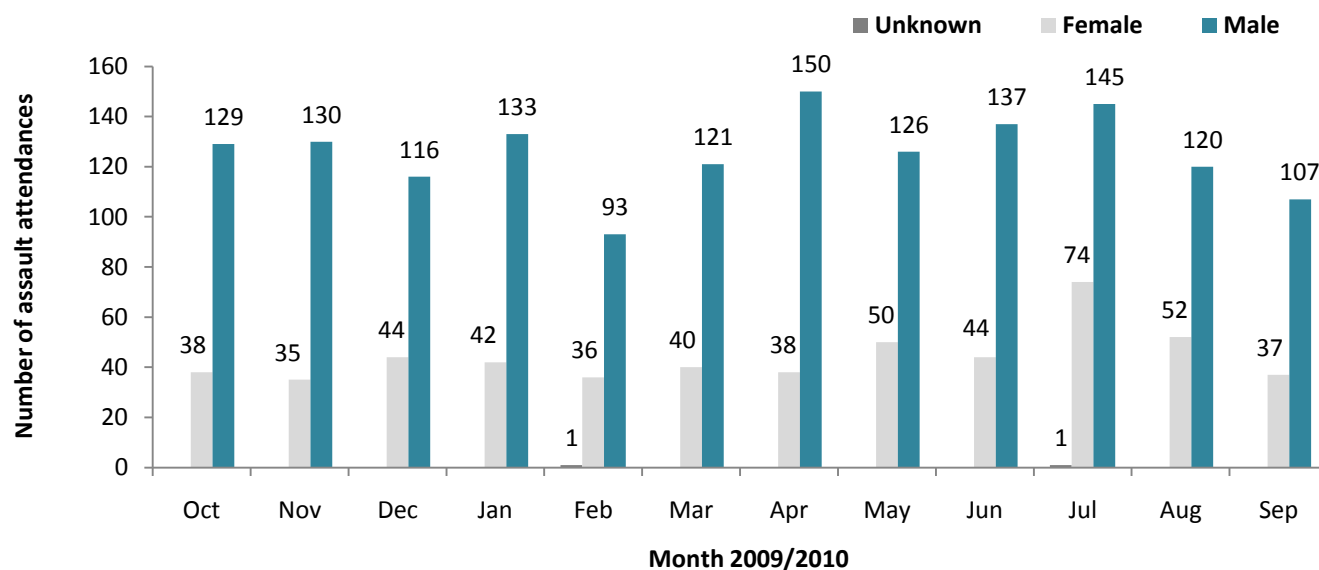


Table 5: ED assault attendances by age group and month, October 2009 to September 2010

Age group	Oct	Nov	Dec	Jan	Feb	Mar	Apr	May	Jun	Jul	Aug	Sep	Total	%
Unknown	***	***	***	***	***	***	***	***	***	***	***	***	***	0
0-4	***	***	***	***	***	***	***	***	***	***	***	***	***	0
5-14	7	9	10	99	71	92	7	12	8	***	6	8	333	16
15-29	103	107	83	68	52	53	107	91	110	130	105	69	1078	53
30-59	54	47	65	6	7	9	69	69	60	84	58	59	587	29
60 plus	***	***	***	***	***	***	5	***	***	***	***	7	35	2
Total	167	165	160	175	130	161	188	176	181	220	172	144	2039	100

Table 6: ED assault attendances by location of incident and month, October 2009 to September 2010

Location	Oct	Nov	Dec	Jan	Feb	Mar	Apr	May	Jun	Jul	Aug	Sep	Total	%
Public place	104	78	70	77	61	81	94	71	82	121	73	67	979	48
Other	25	45	34	46	35	32	49	42	48	49	60	40	505	25
Home	33	25	45	44	29	38	35	53	42	40	33	32	449	22
Workplace	***	12	5	***	***	***	***	5	***	***	***	***	61	3
Educational establishment	***	5	6	***	***	***	***	5	***	***	***	***	45	2
Total	167	165	160	175	130	161	188	176	181	220	172	144	2039	100

Table 7: ED assault attendances by discharge destination and month, October 2009 to September 2010

Discharge destination	Oct	Nov	Dec	Jan	Feb	Mar	Apr	May	Jun	Jul	Aug	Sep	Total	%
Discharged	73	76	70	67	67	74	73	77	77	82	65	59	860	42
Follow-up	74	59	75	85	47	64	75	61	73	87	71	52	823	40
Other	***	23	***	13	***	17	33	28	***	46	29	28	287	14
Admitted	***	7	***	10	***	6	7	10	***	5	7	5	69	3
Total	167	165	160	175	130	161	188	176	181	220	172	144	2039	100

Published November 2010

Johnathan Rooney (Lancashire TIIG Officer)

Centre for Public Health, Liverpool John Moores University, 3rd Floor, Henry Cotton Campus, Liverpool, L3 2ET

Tel: 0151 231 4513 Email: j.rooney@ljmu.ac.uk

Website: www.tiig.info (please note data requests should be made through the website)

¹ For other EDs, TIIG reports on injuries only. However, this report includes all attendances at Blackpool Victoria Hospital ED. This is due to the medical and injury attendances being categorised within the patient group 'other'.

² GP=general practitioner, LA=local authority and FCMS=Flyde Coast Medical Services Ltd.

³ Please note that all numbers less than five have been suppressed (with ***) in line with patient confidentiality; and if there is only one number less than five in a category then two numbers will be suppressed to prevent back calculations from totals.

⁴ Due to low numbers firework injuries have been included under "other injury".

⁵ DVT=deep vein thrombosis.