

Blackpool Victoria Hospital Emergency Department

Monthly Bulletin: July 2010 to June 2011

This bulletin provides a breakdown of all attendances¹ at Blackpool Victoria Hospital Emergency Department (ED) between July 2010 and June 2011.

Between July 2010 and June 2011 there were 79,678 attendances to Blackpool Victoria Hospital ED. The month with the highest attendances was July with 7,288 attendances (**Figure 1**). There were more male than female attendances presenting at Blackpool Victoria Hospital ED (males=41,198; 52%).

Figure 2 illustrates age group of ED attendances for each month. Over three in ten of ED attendances were aged over 60 years old (n=25,227; 32%) and 30-59 years old (n=24,682; 31%). Most ED attendances were self-referred (44%) or referred by an emergency call or ambulance (42%) (**Table 1**).

Table 2 details the injury group of ED attendances. The majority (89%) of attendances were recorded as other (including other injury and medical attendances). Sports injury accounted for 3% of attendances, assaults 3% and road traffic collisions (RTC) 2%.

Table 3 shows the location of incident for ED attendances. It shows that almost six in ten (59%) of incidents occurred in the home, and nearly a fifth (19%) occurred in a public place.

The discharge destination for ED attendances is displayed in **Table 4**. It indicates that over half (54%) of attendances were discharged. Almost three in ten (28%) of attendances were admitted into hospital and 11% were referred.

Assault attendances

Between July 2010 and June 2011 there were 2,175 assault attendances to Blackpool Victoria Hospital ED. The month with the highest attendances was April with 222 attendances (**Figure 3**). There were more male than female assault attendances presenting at Blackpool Victoria Hospital ED (males=1,572; 72%).

Table 5 details the age group of assault attendances for each month. The majority of ED assault attendances were aged 15-29 (n=1,198; 55%) and 38% were 30-59 years old (n=820).

Table 6 shows the location of incident for assault attendances. It shows just under half (46%) occurred in a public place, with a quarter (25%) occurring in the home.

Table 7 illustrates the general discharge destination for assault attendances to Blackpool Victoria Hospital ED. Nearly six in ten (56%) were discharged without follow-up treatment, whilst 22% required follow-up treatment. One in twenty (5%) assault attendances were admitted to hospital.

Figure 1: Gender of ED attendances by month, July 2010 to June 2011

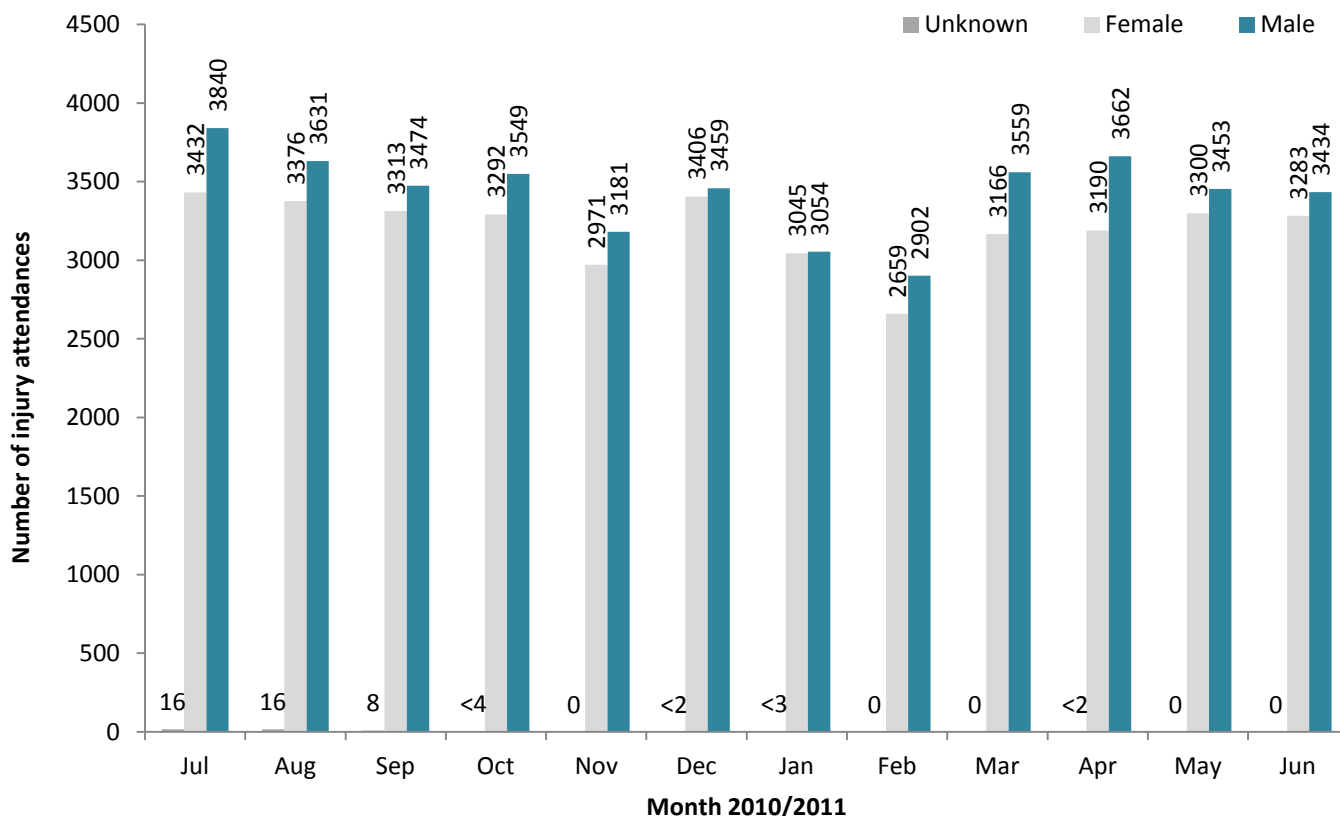


Figure 2: Age group of ED attendances by month, July 2010 to June 2011

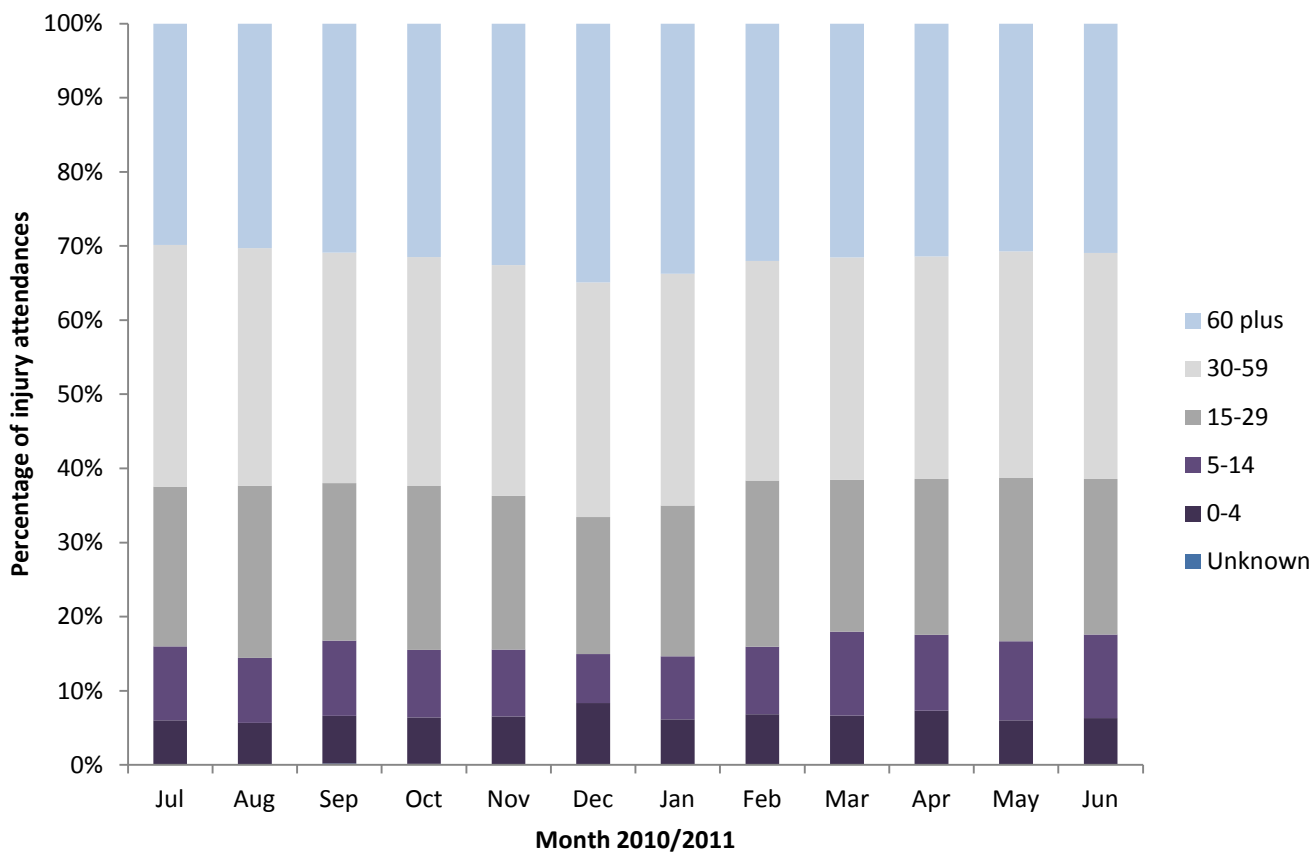


Table 1: ED attendances by source of referral and month, July 2010 to June 2011²³⁴⁵

Source of referral	Jul	Aug	Sep	Oct	Nov	Dec	Jan	Feb	Mar	Apr	May	Jun	Total	%
Self referral	3194	3091	2906	2821	2606	2889	2594	2368	3074	3052	3082	3044	34721	44
Emergency call or ambulance	2900	2878	2688	2831	2576	3009	2611	2407	2722	2945	2747	2857	33171	42
Health care provider: same or other	***	***	***	***	***	***	632	527	574	659	686	564	3642	5
GP	182	163	250	227	183	232	154	163	227	138	169	185	2273	3
Other referrer	146	165	183	161	383	711	15	6	19	***	***	***	1789	2
FCMS	425	316	329	340	180	***	***	***	***	***	***	***	1590	2
Walk-in centre	161	166	195	181	92	***	***	***	***	***	***	***	795	1
Employer	82	83	80	91	22	***	50	55	53	31	<27	34	607	1
Educational establishment	***	***	19	17	25	16	38	33	48	28	43	33	305	0
Police	64	47	45	47	25	7	***	***	7	***	***	***	247	0
ED staff	46	44	41	32	17	***	***	***	***	***	***	***	185	0
NHS Direct	50	32	34	37	19	***	***	***	***	***	***	***	172	0
Other hospital	23	28	17	42	17	***	***	***	***	***	***	***	127	0
Optician	6	6	***	9	***	***	***	***	***	***	***	***	23	0
LA/social services	***	***	7	***	5	***	***	***	***	***	***	***	22	0
Prison service	***	***	***	***	***	***	***	***	***	***	***	***	9	0
Total	7288	7023	6795	6844	6152	6866	6101	5561	6725	6853	6753	6717	79678	100

Table 2: ED attendances by injury group and month, July 2010 to June 2011^{6*}

Injury group	Jul	Aug	Sep	Oct	Nov	Dec	Jan	Feb	Mar	Apr	May	Jun	Total	%
Other injury	6514	6278	6023	6035	5474	6411	5487	4890	5858	6072	6014	5981	71889	89
Sports injury	213	209	287	258	217	70	171	192	308	224	238	204	2591	3
Assault	220	172	144	177	147	177	165	173	196	222	203	179	2175	3
RTC	145	192	167	182	216	172	107	134	154	137	137	162	1905	2
Overdose/Poisoning	156	140	131	152	154	118	128	139	159	147	132	147	1714	2
Deliberate self-harm (DSH)	40	32	43	40	34	36	43	33	50	51	29	44	475	1
Total	7288	7023	6795	6844	6242	6984	6229	5700	6884	7004	6889	6868	80749	100

* In December 2010, the overdose injury group was removed due to a change in the ED's IT system. Since this time, cases have been categorised into one of the other injury groupings (e.g. 'other injury' / 'deliberate self-harm'). Such cases are however identifiable via another data field, 'presenting complaint'. Where injury group is recorded as 'other injury' and 'presenting complaint' is recorded as overdose/poisoning these cases have been categorised in this table as overdose/poisoning. Please note, during this period, 30 DSH cases also had overdose/poisoning recorded as their presenting complaint.

Table 3: ED attendances by location of incident and month, July 2010 to June 2011

Location	Jul	Aug	Sep	Oct	Nov	Dec	Jan	Feb	Mar	Apr	May	Jun	Total	%
Home	4086	3797	3849	3899	3695	4373	4071	3492	4115	4084	3898	3861	47220	59
Public place	1369	1507	1247	1335	1139	1338	921	949	1181	1406	1319	1406	15117	19
Other	1323	1432	1160	1082	804	770	679	687	825	990	1041	1023	11816	15
Workplace	338	270	273	304	256	240	226	242	287	254	289	256	3235	4
Educational establishment	<170	6	242	191	242	<144	204	191	317	119	206	171	2201	3
Unknown	***	11	24	33	16	***	0	0	0	0	0	0	89	0
Total	7288	7023	6795	6844	6152	6866	6101	5561	6725	6853	6753	6717	79678	100

Table 4: ED attendances by discharge destination and month, December 2010 to June 2011⁷

Discharge destination	Dec	Jan	Feb	Mar	Apr	May	Jun	Total	%
Discharged	3621	3269	2941	3730	3851	3692	3659	24763	54
Admitted	2129	1764	1628	1750	1739	1809	1762	12581	28
Referred	625	606	583	772	752	720	754	4812	11
Incomplete treatment	0	350	312	357	399	392	423	2233	5
Other	401	20	27	29	29	69	29	604	1
Transferred	73	72	58	70	70	48	72	463	1
Died	17	20	12	17	13	23	18	120	0
Total	6866	6101	5561	6725	6853	6753	6717	45576	100

Assaults

Figure 3: Number of ED assault attendances by gender and month, July 2010 to June 2011

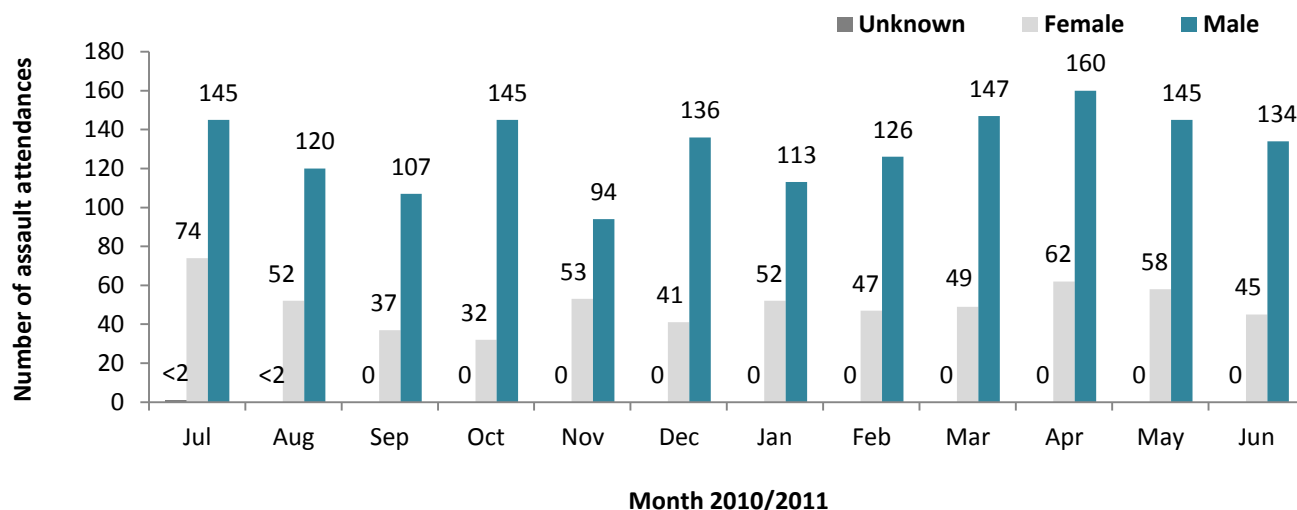


Table 5: ED assault attendances by age group and month, July 2010 to June 2011

Age group	Jul	Aug	Sep	Oct	Nov	Dec	Jan	Feb	Mar	Apr	May	Jun	Total	%
Unknown	***	***	***	***	***	***	***	***	***	***	***	***	***	0
0-4	***	***	***	***	***	***	***	***	***	***	***	***	6	0
5-14	***	6	8	12	6	***	7	6	11	8	13	14	97	4
15-29	130	105	69	92	68	91	93	101	101	125	112	111	1198	55
30-59	84	58	59	70	67	78	56	62	78	83	75	50	820	38
60 plus	***	***	7	***	6	5	9	***	6	6	***	***	53	2
Total	220	172	144	177	147	177	165	173	196	222	203	179	2175	100

Table 6: ED assault attendances by location of incident and month, July 2010 to June 2011

Location	Jul	Aug	Sep	Oct	Nov	Dec	Jan	Feb	Mar	Apr	May	Jun	Total	%
Public place	121	73	67	90	53	84	66	80	83	103	112	72	1004	46
Home	40	33	32	39	45	57	60	44	59	56	39	40	544	25
Other	49	60	40	39	39	28	25	42	41	47	37	56	503	23
Workplace	<10	<7	***	<6	***	<6	<11	<7	<10	<14	7	***	81	4
Educational establishment	***	***	***	***	<7	***	***	***	***	***	8	<8	43	2
Total	220	172	144	177	147	177	165	173	196	222	203	179	2175	100

Table 7: ED assault attendances by discharge destination and month, July 2010 to June 2011

Discharge destination	Jul	Aug	Sep	Oct	Nov	Dec	Jan	Feb	Mar	Apr	May	Jun	Total	%
Discharged	82	65	59	96	91	105	109	118	109	145	134	110	1223	56
Follow-up	87	71	52	56	25	25	22	23	37	36	25	16	475	22
Other	46	29	28	18	20	35	27	25	33	28	39	37	365	17
Admitted	5	7	5	7	11	12	7	7	17	13	5	16	112	5
Total	220	172	144	177	147	177	165	173	196	222	203	179	2175	100

Published October 2011

Johnathan Rooney (TIIG Officer)

Centre for Public Health, Liverpool John Moores University, 2nd Floor, Henry Cotton Campus, Liverpool, L3 2ET

Tel: 0151 231 4513 Email: j.rooney@ljmu.ac.uk

Website: www.tiig.info (please note data requests should be made through the website)

¹For other EDs, TIIG reports on injuries only. However, this report includes all attendances at Blackpool Victoria Hospital ED. This is due to the medical and injury attendances being categorised within the patient group 'other'.

²GP=general practitioner, LA=local authority and FCMS=Flyde Coast Medical Services Ltd

³Please note that all numbers less than five have been suppressed (with ***) in line with patient confidentiality; and if there is only one number less than five in a category then two numbers will be suppressed to prevent back calculations from totals.

⁴Please note percentages might not add to one hundred due to rounding.

⁵The decrease in figures for November and December for some fields is due to a change in IT system at Blackpool Victoria Hospital ED. This has led to certain fields being no longer collected.

⁶Due to low numbers firework injuries (n=22) have been included under "other injury".

⁷For previous months please refer to 'January to December 2010' monthly bulletin report available at www.tiig.info.