

Blackpool Victoria Hospital Emergency Department

Monthly Bulletin: April 2011 to March 2012

This bulletin provides a breakdown of all attendances¹ at Blackpool Victoria Hospital Emergency Department (ED) between April 2011 to March 2012.

Between April 2011 and March 2012 there were 79,815 attendances to Blackpool Victoria Hospital ED. The month with the highest attendances was March with 7,042 attendances (**Figure 1**). There were more male than female attendances presenting at Blackpool Victoria Hospital ED (males=40,961; 51%).

Figure 2 illustrates age group of ED attendances for each month. Over three in ten ED attendances were aged over 60 years old (n=25,712; 32%) and 30-59 years old (n=24,621; 31%). Most ED attendances were referred by an emergency call or ambulance (43%) or self-referred (42%) (**Table 1**).

Table 2 details the injury group of ED attendances. The majority (90%) of attendances were recorded as other (including other injury and medical attendances). Sports injury accounted for 3% of attendances, assaults 3%, overdose and poisoning 2% and road traffic collisions (RTC) 2%.

Table 3 shows the location of incident for ED attendances. It shows that over six in ten (61%) of incidents occurred in the home, and almost a fifth (19%) occurred in a public place.

The discharge destination for ED attendances is displayed in **Table 4**. It indicates that over half (54%) attendances were discharged. Almost three in ten (27%) of attendances were admitted into hospital and 10% were referred.

Assault attendances

Between April 2011 and March 2012 there were 2,040 assault attendances to Blackpool Victoria Hospital ED. The month with the highest attendances was April with 222 attendances (**Figure 3**). There were more male than female assault attendances presenting at Blackpool Victoria Hospital ED (males=1,475; 72%).

Table 5 details the age group of assault attendances for each month. The majority of ED assault attendances were aged 15-29 (n=1,141; 56%) and 37% were 30-59 years old (n=757).

Table 6 shows the location of incident for assault attendances. It shows that half (50%) occurred in a public place, with over a quarter (26%) occurring in the home.

Table 7 illustrates the discharge destination for assault attendances to Blackpool Victoria Hospital ED. Nearly two-thirds (64%) were discharged without follow-up treatment, whilst 14% required follow-up treatment. Over one in twenty (6%) assault attendances were admitted to hospital.

Figure 1: Gender of ED attendances by month, April 2011 to March 2012

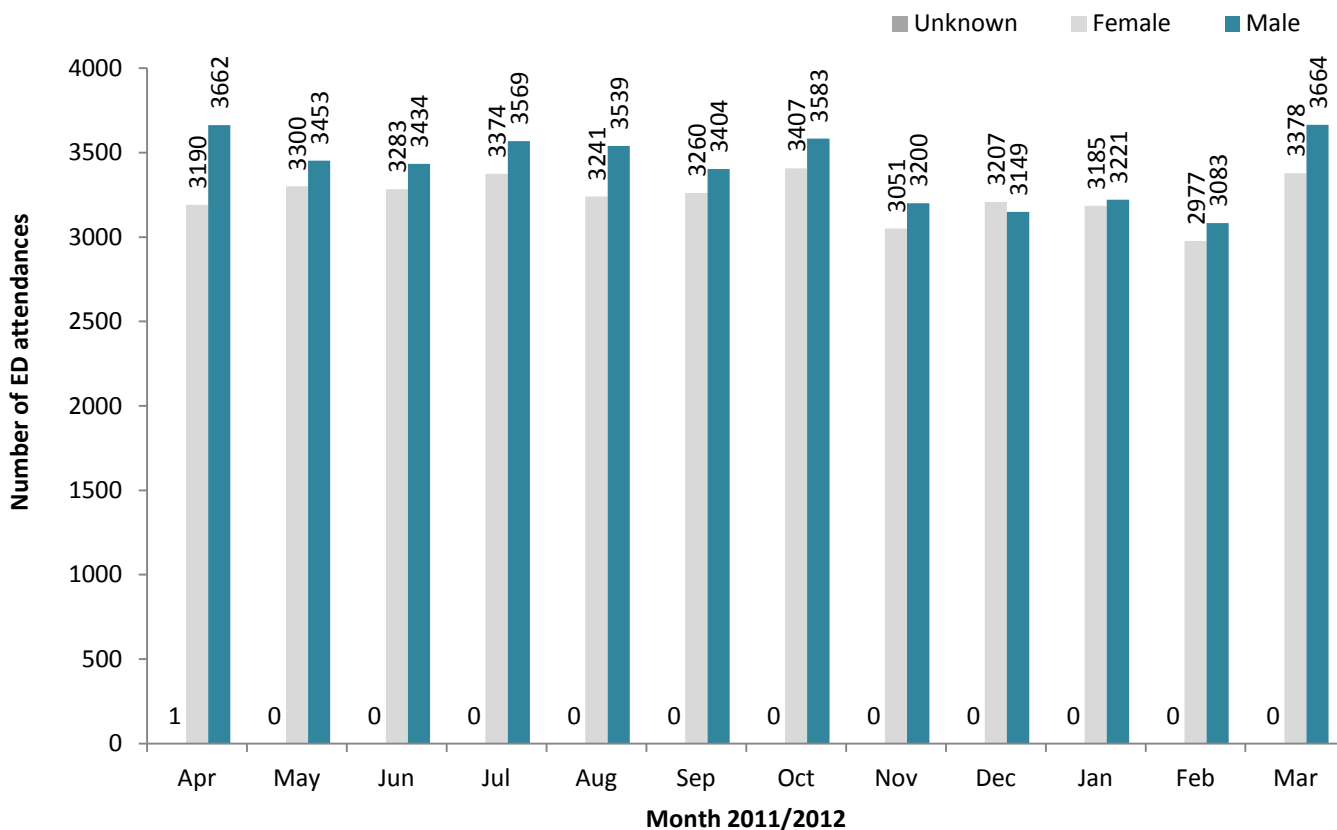


Figure 2: Age group of ED attendances by month, April 2011 to March 2012

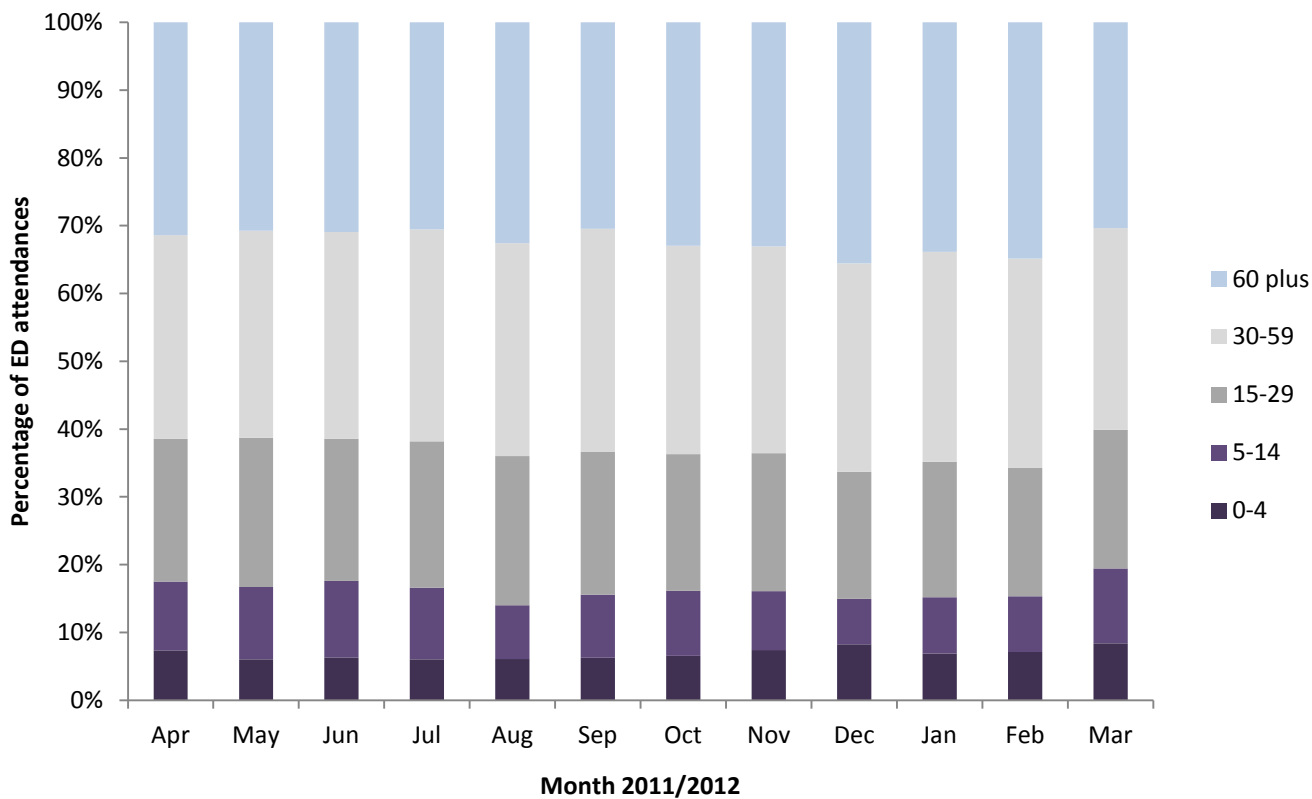


Table 1: ED attendances by source of referral and month, April 2011 to March 2012^{2,3}

Source of referral	Apr	May	Jun	Jul	Aug	Sep	Oct	Nov	Dec	Jan	Feb	Mar	Total	%
Emergency call/ambulance	2945	2747	2857	2875	2910	2849	3113	2726	2982	2921	2710	2951	34586	43
Self referral	3052	3082	3044	3170	2879	2802	2819	2566	2368	2462	2209	2814	33267	42
Health care provider: same or other	659	686	564	661	761	733	735	576	681	664	754	871	8345	10
GP	138	169	185	163	176	196	191	198	149	195	181	181	2122	3
Employer	31	26	34	37	53	39	44	32	29	20	43	39	427	1
Educational establishment	28	43	33	37	***	45	35	42	14	28	41	61	408	1
Other referrer	***	***	***	***	***	***	15	47	54	55	67	56	294	0
Police	***	***	***	***	***	***	23	37	55	43	28	35	221	0
ED staff	***	***	***	***	***	***	14	24	23	18	26	32	137	0
LA/social services	***	***	***	***	***	***	***	***	***	***	***	***	<6	0
Prison service	***	***	***	***	***	***	***	***	***	***	***	***	***	0
Total	6853	6753	6717	6943	6780	6664	6990	6251	6356	6406	6060	7042	79815	100

Table 2: ED attendances by injury group and month, April 2011 to March 2012^{4,5*}

Injury group	Apr	May	Jun	Jul	Aug	Sep	Oct	Nov	Dec	Jan	Feb	Mar	Total	%
Other	6072	6014	5981	6255	6080	5898	6235	5654	5771	5813	5506	6327	71606	90
Sports injury	224	238	204	182	169	252	246	205	113	156	178	257	2424	3
Assault	222	203	179	190	198	172	185	130	153	141	102	165	2040	3
Overdose and poisoning	151	136	150	158	138	175	151	106	158	153	160	166	1802	2
RTC	137	137	162	120	162	137	139	121	126	111	89	101	1542	2
Deliberate self-harm	47	25	41	38	33	30	34	35	35	32	25	26	401	1
Total	6853	6753	6717	6943	6780	6664	6990	6251	6356	6406	6060	7042	79815	100

* In December 2010, the overdose injury group was removed due to a change in the ED's IT system. Since this time, cases have been categorised into one of the other injury groupings (e.g. 'other injury' / 'deliberate self-harm'). Such cases are however identifiable via another data field, 'presenting complaint'. Where injury group is recorded as 'other injury' and 'presenting complaint' is recorded as overdose/poisoning these cases have been categorised in this table as overdose/poisoning. Please note, during this period, 30 DSH cases also had overdose/poisoning recorded as their presenting complaint.

Table 3: ED attendances by location of incident and month, April 2011 to March 2012

Location	Apr	May	Jun	Jul	Aug	Sep	Oct	Nov	Dec	Jan	Feb	Mar	Total	%
Home	4084	3898	3861	3877	3991	3894	4093	3901	4265	4322	4060	4415	48661	61
Public place	1406	1319	1406	1534	1622	1335	1460	1034	924	885	922	1132	14979	19
Other	990	1041	1023	1084	856	966	973	855	848	842	691	963	11132	14
Workplace	254	289	256	294	294	264	281	243	207	195	222	272	3071	4
Educational establishment	119	206	171	154	17	205	183	218	112	162	165	260	1972	2
Total	6853	6753	6717	6943	6780	6664	6990	6251	6356	6406	6060	7042	79815	100

Table 4: ED attendances by discharge destination and month, April 2011 to March 2012^{}**

Discharge destination	Apr	May	Jun	Jul	Aug	Sep	Oct	Nov	Dec	Jan	Feb	Mar	Total	%
Discharged	3851	3692	3659	3925	3715	3691	3723	3458	3301	3329	3216	3832	43392	54
Admitted	1739	1809	1762	1685	1765	1756	1991	1812	1894	1931	1780	1934	21858	27
Referred	752	720	754	788	689	664	660	574	661	658	661	780	8361	10
Incomplete treatment	399	392	423	418	466	431	468	297	357	342	283	335	4611	6
Transferred	70	48	72	82	71	64	97	56	79	85	61	101	886	1
Other	29	69	29	22	50	32	33	27	39	35	35	38	438	1
Died	13	23	18	23	24	26	18	27	25	26	24	22	269	0
Total	6853	6753	6717	6943	6780	6664	6990	6251	6356	6406	6060	7042	79815	100

**Due to a change in the ED's IT system the coding for the discharge destination field has been updated. This report uses the new coding fields in use since December 2010.

Assaults

Figure 3: Number of ED assault attendances by gender and month, April 2011 to March 2012

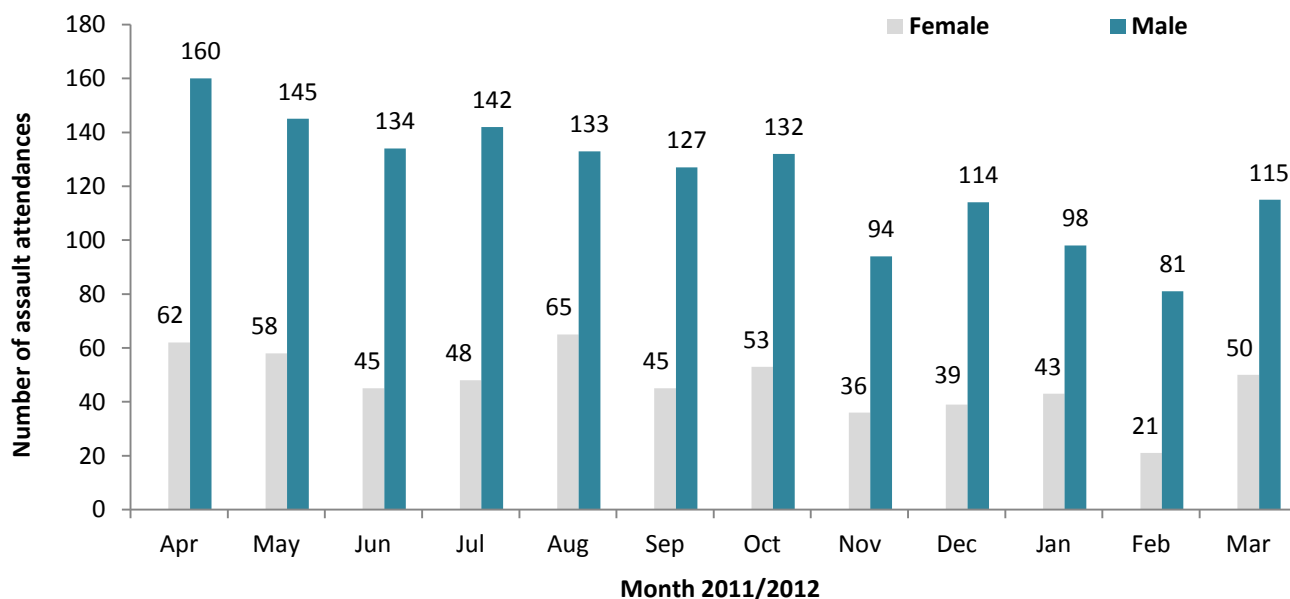


Table 5: ED assault attendances by age group and month, April 2011 to March 2012

Age group	Apr	May	Jun	Jul	Aug	Sep	Oct	Nov	Dec	Jan	Feb	Mar	Total	%
0-4	***	***	***	***	***	***	***	***	***	***	***	***	6	0
5-14	8	13	14	10	8	5	10	***	***	7	***	11	95	5
15-29	125	112	111	101	113	86	104	64	95	85	54	91	1141	56
30-59	83	75	50	73	71	77	67	57	54	49	44	57	757	37
60 plus	<7	***	***	<7	***	***	***	5	***	***	***	<7	41	2
Total	222	203	179	190	198	172	185	130	153	141	102	165	2040	100

Table 6: ED assault attendances by location of incident and month, April 2011 to March 2012

Location	Apr	May	Jun	Jul	Aug	Sep	Oct	Nov	Dec	Jan	Feb	Mar	Total	%
Public place	103	112	72	96	95	84	92	67	77	71	53	91	1013	50
Home	56	39	40	49	56	45	57	40	42	33	25	40	522	26
Other	47	37	56	35	39	36	25	13	26	25	16	20	375	18
Workplace	<14	7	***	<8	<9	<7	<10	<9	<6	<12	<8	9	94	5
Educational establishment	***	8	<8	***	***	***	***	***	***	***	***	5	36	2
Total	222	203	179	190	198	172	185	130	153	141	102	165	2040	100

Table 7: ED assault attendances by discharge destination and month, April 2011 to March 2012

Discharge destination	Apr	May	Jun	Jul	Aug	Sep	Oct	Nov	Dec	Jan	Feb	Mar	Total	%
Discharged	145	134	110	120	127	99	106	95	94	88	70	112	1300	64
Other	28	<40	37	30	34	32	40	19	26	24	<16	21	345	17
Follow-up	36	25	16	26	28	31	23	8	24	21	16	24	278	14
Admitted	13	<6	16	14	9	10	16	8	9	8	***	8	117	6
Total	222	203	179	190	198	172	185	130	153	141	102	165	2040	100

Published May 2012

Johnathan Rooney (TIIG Officer)

Centre for Public Health, Liverpool John Moores University, 2nd Floor, Henry Cotton Campus, Liverpool, L3 2ET

Tel: 0151 231 4539 Email: j.rooney@ljmu.ac.uk

Website: www.tiig.info (please note data requests should be made through the website)

¹For other EDs, TIIG reports on injuries only. However, this report includes all attendances at Blackpool Victoria Hospital ED. This is due to the medical and injury attendances being categorised within the patient group 'other'.

²GP=general practitioner, LA=local authority.

³Please note that all numbers less than five have been suppressed (with ***) in line with patient confidentiality; and if there is only one number less than five in a category then two numbers will be suppressed to prevent back calculations from totals.

⁴Due to low numbers firework injuries (n=5) have been included under other injury.

⁵Please note percentages might not add to one hundred due to rounding.