

Blackpool Victoria Hospital Emergency Department

Monthly Bulletin: October 2011 to September 2012

This bulletin provides a breakdown of all attendances¹ at Blackpool Victoria Hospital Emergency Department (ED) between October 2011 and September 2012.

Between October 2011 and September 2012 there were 81,357 attendances to Blackpool Victoria Hospital ED. The month with the highest attendances was July with 7,266 attendances (**Figure 1**). There were more male than female attendances presenting at Blackpool Victoria Hospital ED (males=41,237; 51%).

Figure 2 illustrates age group of ED attendances for each month. Over three in ten ED attendances were aged over 60 years old (n=26,754; 33%) and 30-59 years old (n=25,110; 31%). Most ED attendances were referred by an emergency call or ambulance (43%) or self-referred (39%) (**Table 1**).

Table 2 details the injury group of ED attendances. The majority (91%) of attendances were recorded as other (including other injury and medical attendances). Sports injury accounted for 3% of attendances, overdose and poisoning 2%, assaults 2% and road traffic collisions (RTC) 2%.

Table 3 shows the location of incident for ED attendances. It shows that over six in ten (63%) of incidents occurred in the home, and almost a fifth (17%) occurred in a public place.

The discharge destination for ED attendances is displayed in **Table 4**. It indicates that over half (54%) attendances were discharged. Almost three in ten (28%) of attendances were admitted into hospital and 10% were referred.

Assault attendances

Between October 2011 and September 2012 there were 1,729 assault attendances to Blackpool Victoria Hospital ED. The month with the highest attendances was October with 185 attendances (**Figure 3**). There were more male than female assault attendances presenting at Blackpool Victoria Hospital ED (males=1,261; 73%).

Table 5 details the age group of assault attendances for each month. The majority of ED assault attendances were aged 15-29 (n=942; 54%) and 40% were 30-59 years old (n=685).

Table 6 shows the location of incident for assault attendances. It shows that over half (53%) occurred in a public place, with a quarter (25%) occurring in the home.

Table 7 illustrates the discharge destination for assault attendances to Blackpool Victoria Hospital ED. Over two-thirds (67%) were discharged without follow-up treatment, whilst 13% required follow-up treatment. One in twenty (5%) assault attendances were admitted to hospital.

Figure 1: Gender of ED attendances by month, October 2011 to September 2012

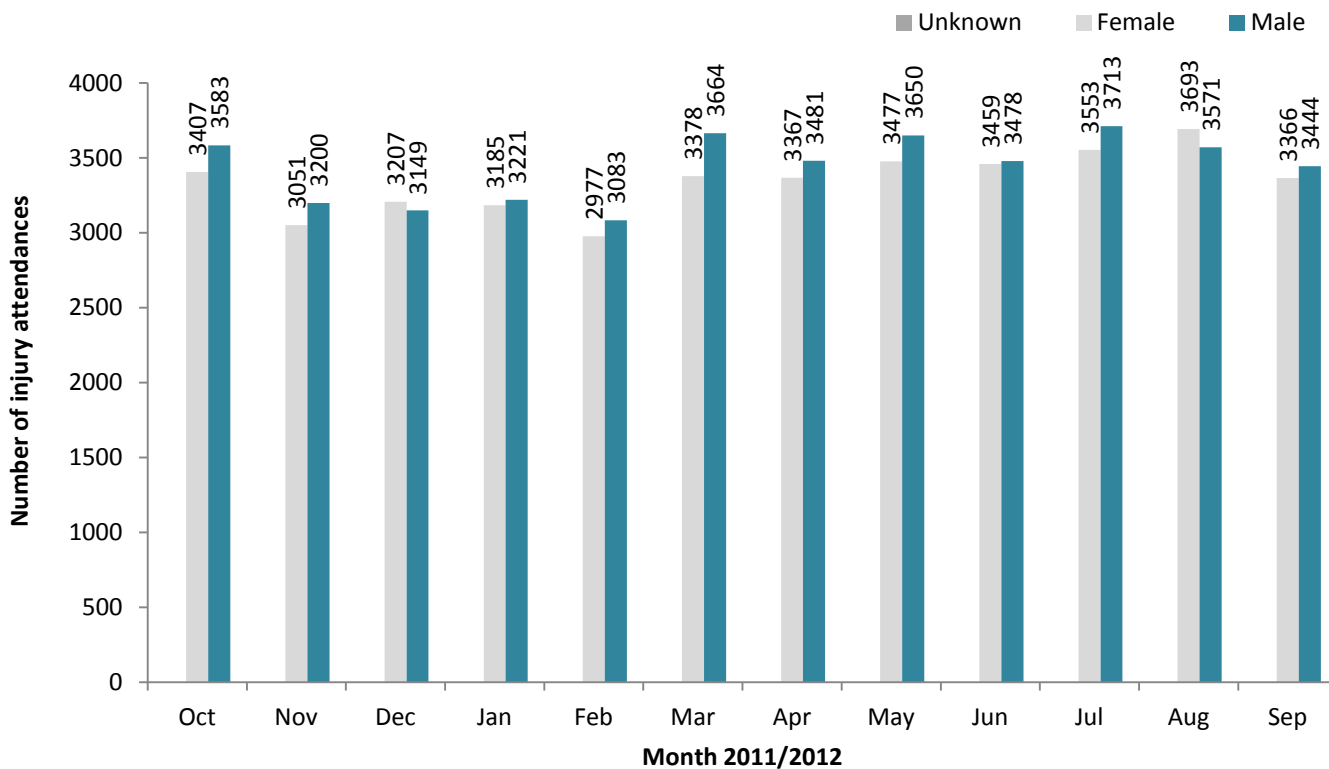


Figure 2: Age group of ED attendances by month, October 2011 to September 2012

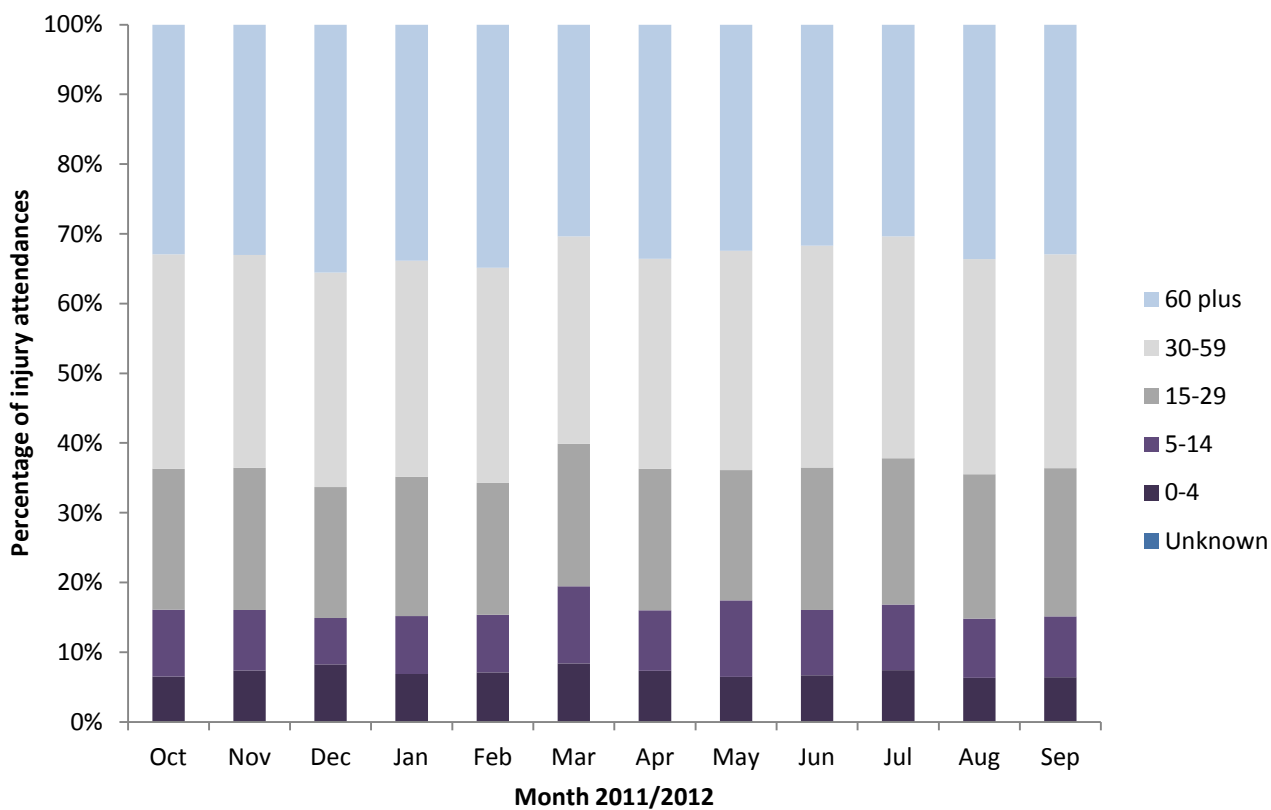


Table 1: ED attendances by source of referral and month, October 2011 to September 2012^{2,3,4}

Source of referral	Oct	Nov	Dec	Jan	Feb	Mar	Apr	May	Jun	Jul	Aug	Sep	Total	%
Emergency call/ambulance	3113	2726	2982	2921	2710	2951	2838	2893	2874	3047	3141	2931	35127	43
Self referral	2819	2566	2368	2462	2209	2814	2722	2909	2789	2903	2889	2664	32114	39
Health Care Provider: same or other	735	576	681	664	754	871	891	810	795	817	820	680	9094	11
GP	191	198	149	195	181	181	203	256	228	232	193	219	2426	3
Other referrer	15	47	54	55	67	56	82	89	92	78	88	106	829	1
Police	23	37	55	43	28	35	41	64	61	58	53	73	571	1
Employer	44	32	29	20	43	39	32	41	39	59	46	43	467	1
Educational establishment	35	42	<15	28	41	61	17	40	29	22	***	64	394	0
ED staff	14	24	23	18	26	32	22	25	30	50	33	29	326	0
LA/social services	***	***	***	***	***	***	***	***	***	***	***	***	6	0
FCMS	***	***	***	***	***	***	***	***	***	***	***	***	***	0
NHS Direct	***	***	***	***	***	***	***	***	***	***	***	***	***	0
Optician	***	***	***	***	***	***	***	***	***	***	***	***	***	0
Other hospital	***	***	***	***	***	***	***	***	***	***	***	***	***	0
Prison service	***	***	***	***	***	***	***	***	***	***	***	***	***	0
Walk-in centre	***	***	***	***	***	***	***	***	***	***	***	***	***	0
Total	6990	6251	6356	6406	6060	7042	6848	7127	6937	7266	7264	6810	81357	100

Table 2: ED attendances by injury group and month, October 2011 to September 2012^{5,*}

Injury group	Oct	Nov	Dec	Jan	Feb	Mar	Apr	May	Jun	Jul	Aug	Sep	Total	%
Other injury	6235	5654	5771	5813	5506	6327	6198	6530	6342	6618	6690	6172	73856	91
Sports injury	246	205	113	156	178	257	208	186	118	157	124	211	2159	3
Overdose and poisoning	151	106	158	153	160	166	157	174	180	162	158	175	1900	2
Assault	185	130	153	141	102	165	146	99	142	179	158	129	1729	2
RTC	139	121	126	111	89	101	100	106	123	114	101	99	1330	2
Deliberate self-harm (DSH)	34	35	35	32	25	26	39	32	32	36	33	24	383	0
Total	6990	6251	6356	6406	6060	7042	6848	7127	6937	7266	7264	6810	81357	100

* In December 2010, the overdose injury group was removed due to a change in the ED's IT system. Since this time, cases have been categorised into one of the other injury groupings (e.g. 'other injury' / 'deliberate self-harm'). Such cases are however identifiable via another data field, 'presenting complaint'. Where injury group is recorded as 'other injury' and 'presenting complaint' is recorded as overdose/poisoning these cases have been categorised in this table as overdose/poisoning. Please note, during this period, 26 DSH cases also had overdose/poisoning recorded as their presenting complaint.

Table 3: ED attendances by location of incident and month, October 2011 to September 2012[^]

Location	Oct	Nov	Dec	Jan	Feb	Mar	Apr	May	Jun	Jul	Aug	Sep	Total	%
Home	4093	3901	4265	4322	4060	4415	4273	4371	4225	4378	4403	4218	50924	63
Public place	1460	1034	924	885	922	1132	1224	1264	1240	1355	1463	1265	14168	17
Other	973	855	848	842	691	958	979	1031	1054	1131	1134	916	11412	14
Workplace	281	243	207	195	222	272	256	235	277	279	251	226	2944	4
Educational establishment	183	218	112	162	165	260	109	223	141	123	13	185	1894	2
Total	6990	6251	6356	6406	6060	7042	6848	7127	6937	7266	7264	6810	81357	100

[^]There were 15 attendances where location was unknown; these have been included in the total figure.

Table 4: ED attendances by discharge destination and month, October 2011 to September 2012^{}**

Discharge destination	Oct	Nov	Dec	Jan	Feb	Mar	Apr	May	Jun	Jul	Aug	Sep	Total	%
Discharged	3723	3458	3301	3329	3216	3832	3640	3886	3920	4043	4157	3793	44298	54
Admitted	1991	1812	1894	1931	1780	1934	2002	2003	1849	1901	1914	1835	22846	28
Referred	660	574	661	658	661	780	671	738	688	796	634	645	8166	10
Incomplete treatment	468	297	357	342	283	335	352	322	305	338	339	319	4057	5
Transferred	97	56	79	85	61	101	88	97	105	111	122	135	1137	1
Other	33	27	39	35	35	38	73	53	54	63	84	70	604	1
Died	18	27	25	26	24	22	22	28	16	14	14	13	249	0
Total	6990	6251	6356	6406	6060	7042	6848	7127	6937	7266	7264	6810	81357	100

**Due to a change in the ED's IT system the coding for the discharge destination field has been updated. This report uses the new coding fields in use since December 2010.

Assaults

Figure 3: Number of ED assault attendances by gender and month, October 2011 to September 2012

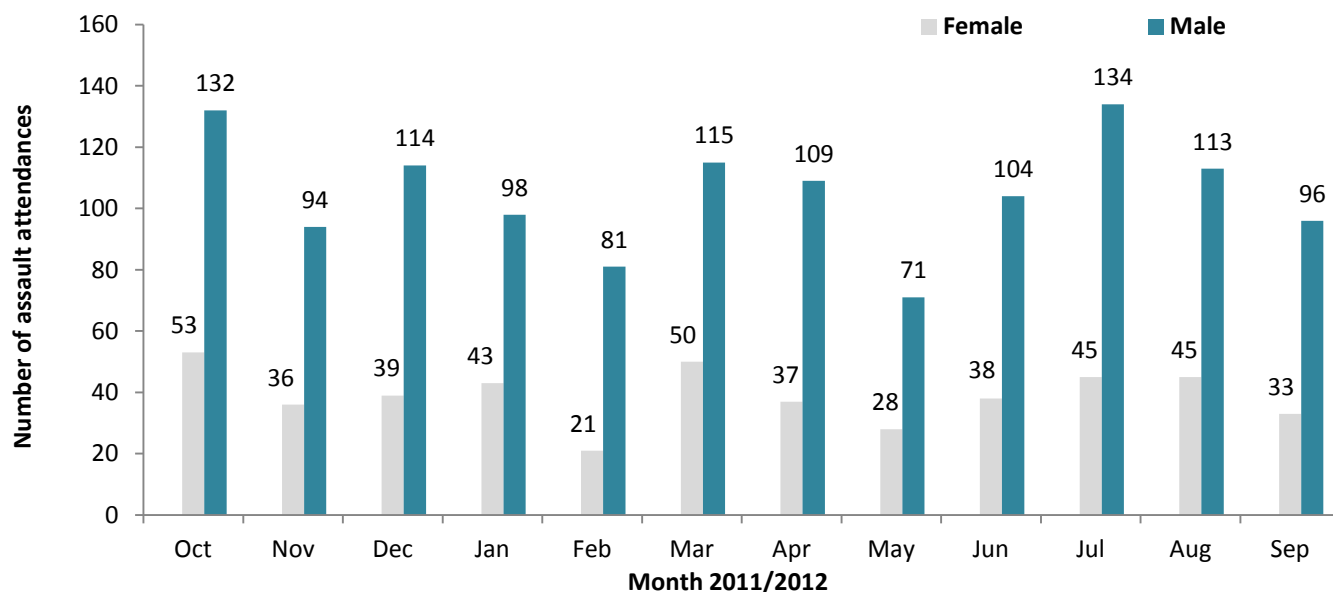


Table 5: ED assault attendances by age group and month, October 2011 to September 2012

Age group	Oct	Nov	Dec	Jan	Feb	Mar	Apr	May	Jun	Jul	Aug	Sep	Total	%
0-4	***	***	***	***	***	***	***	***	***	***	***	***	***	0
5-14	10	***	***	7	***	11	8	5	***	7	***	***	68	4
15-29	104	64	95	85	54	91	87	52	69	90	80	71	942	54
30-59	67	57	54	49	44	57	49	39	68	77	71	53	685	40
60 plus	***	5	***	***	***	<7	***	***	***	5	***	***	<34	2
Total	185	130	153	141	102	165	146	99	142	179	158	129	1729	100

Table 6: ED assault attendances by location of incident and month, October 2011 to September 2012

Location	Oct	Nov	Dec	Jan	Feb	Mar	Apr	May	Jun	Jul	Aug	Sep	Total	%
Public place	92	67	77	71	53	91	76	50	60	102	102	75	916	53
Home	57	40	42	33	25	40	37	27	35	45	34	24	439	25
Other	25	13	26	25	16	20	15	12	28	27	15	24	246	14
Workplace	<10	<9	<6	<12	<8	9	<16	5	<16	***	<8	***	98	6
Educational establishment	***	***	***	***	***	5	***	5	***	***	***	***	30	2
Total	185	130	153	141	102	165	146	99	142	179	158	129	1729	100

Table 7: ED assault attendances by discharge destination and month, October 2011 to September 2012

Discharge destination	Oct	Nov	Dec	Jan	Feb	Mar	Apr	May	Jun	Jul	Aug	Sep	Total	%
Discharged	106	95	94	88	70	112	101	70	94	118	107	96	1151	67
Other	40	19	26	24	<16	21	21	<18	16	24	19	<17	258	15
Follow-up	23	8	24	21	16	24	17	8	27	26	19	13	226	13
Admitted	16	8	9	8	***	8	7	***	5	11	13	***	94	5
Total	185	130	153	141	102	165	146	99	142	179	158	129	1729	100

Published January 2013

Johnathan Rooney (TIIG Officer), Val Upton (Senior Public Health Researcher / Analyst)
 Centre for Public Health, Liverpool John Moores University, 2nd Floor, Henry Cotton Campus, Liverpool, L3 2ET
 Tel: 0151 231 4539 Email: j.rooney@ljmu.ac.uk
 Website: www.tiig.info (please note data requests should be made through the website)

¹For other EDs, TIIG reports on injuries only. However, this report includes all attendances at Blackpool Victoria Hospital ED. This is due to the medical and injury attendances being categorised within the patient group 'other'.

²GP=general practitioner, LA=local authority, FCMS=Fylde coast medical services.

³Please note that all numbers less than five have been suppressed (with ***) in line with patient confidentiality; and if there is only one number less than five in a category then two numbers will be suppressed to prevent back calculations from totals.

⁴Please note percentages might not add to one hundred due to rounding.

⁵Due to low numbers firework injuries (n=19) have been included under other injury.