

# TIIG

INJURY SURVEILLANCE IN THE NORTH WEST OF ENGLAND

## Blackpool Victoria Hospital Emergency Department

### Monthly Bulletin: April 2012 to March 2013

This bulletin provides a breakdown of all attendances<sup>1</sup> at Blackpool Victoria Hospital Emergency Department (ED) between April 2012 and March 2013.

Between April 2012 and March 2013 there were 82,394 attendances to Blackpool Victoria Hospital ED. The month with the highest attendances was July with 7,266 attendances (**Figure 1**). There were fractionally more male than female attendances presenting at Blackpool Victoria Hospital ED (males=41,484; 50%).

**Figure 2** illustrates the age group of ED attendances for each month. Over three in ten ED attendances were aged over 60 years (n=27,654; 34%) and just under a third (n=25,309; 31%) were 30-59 years old. Most ED attendances were referred by an emergency call or ambulance (n=36,068; 44%) or self-referred (n=31,470; 38%) (**Table 1**).

The injury group of ED attendances is detailed in **Table 2**. The majority (n=75,375; 91%) of attendances were recorded as other (including other injury and medical attendances). Assaults accounted for 2% of attendances (n=1,501), sports injury 2% (n=1,915), overdose and poisoning 2% (n=2,012) and road traffic collisions (RTC) 2% (n=1,240).

**Table 3** shows the location of incident for ED attendances. Over six in ten (n=52,445; 64%) of incidents occurred in the home, and nearly a fifth (n=13,327; 16%) occurred in a public place.

The discharge destination for ED attendances is displayed in **Table 4**. It indicates that over half (n=45,332; 55%) attendances were discharged. Over

a quarter (n=22,637; 27%) of attendances were admitted into hospital and 10% were referred (n=8,152).

#### Assault attendances

Between April 2012 and March 2013 there were 1,501 assault attendances to Blackpool Victoria Hospital ED. The month with the highest attendances was July with 179 attendances (**Figure 3**). Three-quarters of the assault attendances presenting at Blackpool Victoria Hospital ED were male (n=1,125; 75%).

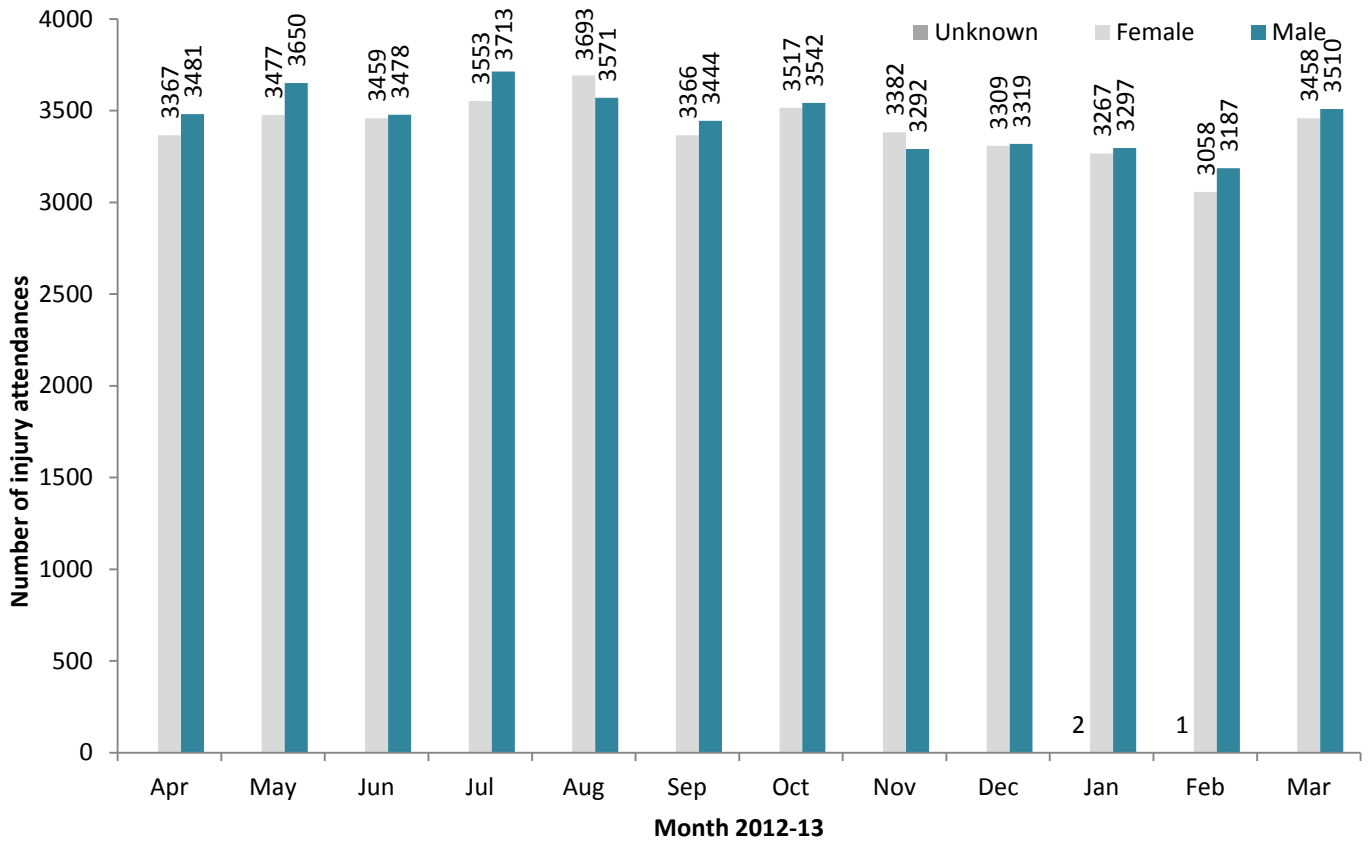
**Table 5** details the age group of assault attendances for each month. The majority of ED assault attendances were aged 15-29 (n=812; 54%) and 40% were 30-59 years old (n=600).

The incident location for assault attendances to Blackpool Victoria Hospital ED is shown in **Table 6**. Over half (n=817; 54%) occurred in a public place, with almost a quarter (23%) occurring in the home (n=352).

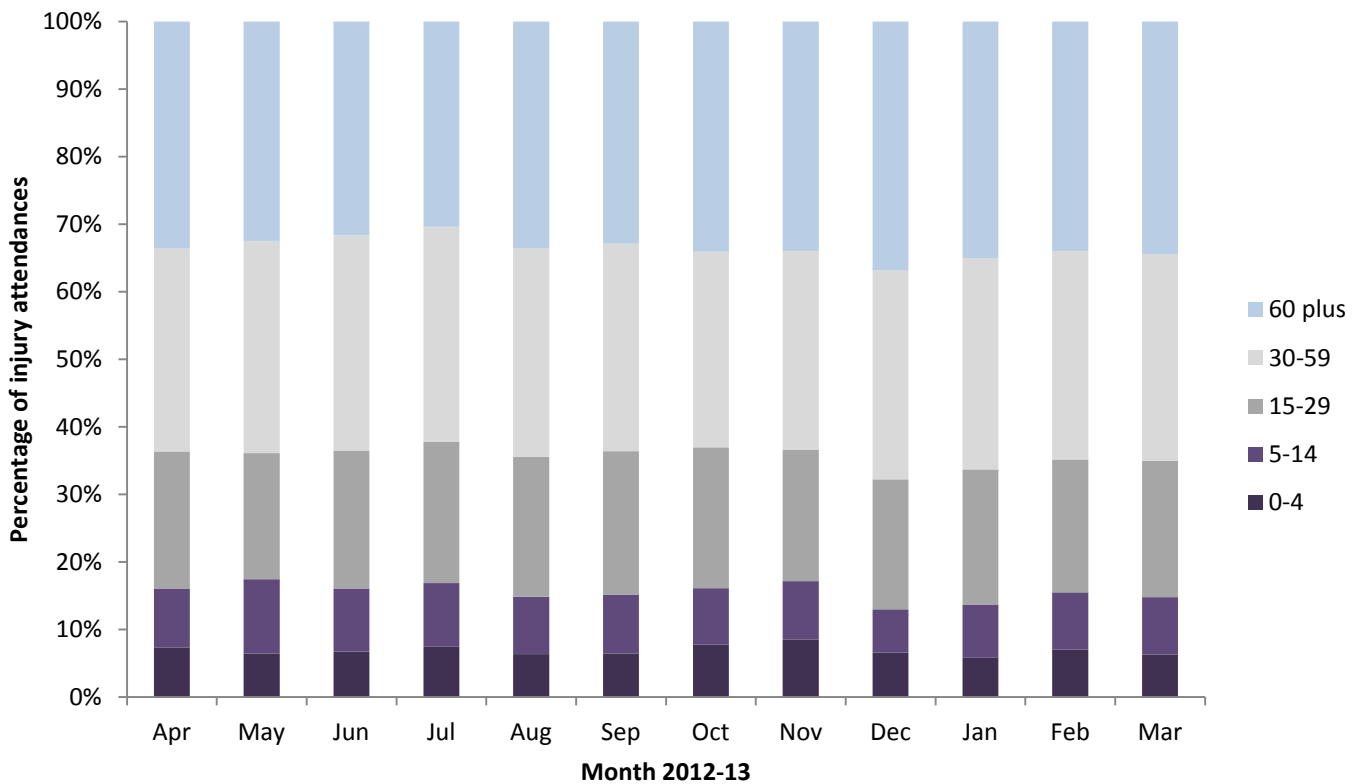
**Table 7** illustrates the discharge destination for assault attendances to Blackpool Victoria Hospital ED. Seven in ten (n=1,050; 70%) were discharged without follow-up treatment compared to 12% who required follow-up treatment (n=187). Almost one in twenty (n=59; 4%) assault attendances were admitted to hospital.

<sup>1</sup>For other EDs TIIG reports on injuries only. However, this report includes all attendances at Blackpool Victoria Hospital ED. This is due to the medical and injury attendances being categorised within the patient group 'other'.

**Figure 1: Gender of ED attendances by month, April 2012 to March 2013**



**Figure 2: Age group of ED attendances by month, April 2012 to March 2013**



**Table 1: ED attendances by source of referral and month, April 2012 to March 2013<sup>2,3,4</sup>**

Source of referral	Apr	May	Jun	Jul	Aug	Sep	Oct	Nov	Dec	Jan	Feb	Mar	Total	%
Emergency call/ambulance	2838	2893	2874	3047	3141	2931	3074	3018	3242	3006	2880	3124	36068	44
Self-referral	2722	2909	2789	2903	2889	2664	2771	2421	2249	2382	2214	2557	31470	38
Health Care Provide: same or other	891	810	795	817	820	680	681	696	701	653	622	797	8963	11
GP	203	256	228	232	193	219	253	280	185	260	248	260	2817	3
Other referrer	82	89	92	78	88	106	86	91	93	92	99	107	1103	1
Police	41	64	61	58	53	73	64	54	62	60	56	39	685	1
Employer	32	41	39	59	46	43	46	45	40	46	50	40	527	1
Educational establishment	<18	40	29	22	***	64	43	30	28	42	43	28	387	0
ED staff	22	25	30	50	33	29	43	39	28	24	32	16	371	0
LA/social services	***	***	***	***	***	***	***	***	***	***	***	***	***	0
Prison service	***	***	***	***	***	***	***	***	***	***	***	***	***	0
<b>Total</b>	<b>6848</b>	<b>7127</b>	<b>6937</b>	<b>7266</b>	<b>7264</b>	<b>6810</b>	<b>7061</b>	<b>6675</b>	<b>6628</b>	<b>6565</b>	<b>6245</b>	<b>6968</b>	<b>82394</b>	<b>100</b>

**Table 2: ED attendances by injury group and month, April 2012 to March 2013<sup>5,\*</sup>**

Injury group	Apr	May	Jun	Jul	Aug	Sep	Oct	Nov	Dec	Jan	Feb	Mar	Total	%
Other injury	6198	6530	6342	6618	6690	6172	6413	6121	6126	6047	5741	6377	75375	91
Overdose and poisoning	157	174	180	162	158	175	190	155	162	166	160	173	2012	2
Sports injury	208	186	118	157	124	211	179	156	84	144	167	181	1915	2
Assault	146	99	142	179	158	129	137	108	131	82	73	117	1501	2
RTC	100	106	123	114	101	99	112	99	110	93	86	97	1240	2
Deliberate self-harm	39	32	32	36	33	24	30	36	15	33	18	23	351	0
<b>Total</b>	<b>6848</b>	<b>7127</b>	<b>6937</b>	<b>7266</b>	<b>7264</b>	<b>6810</b>	<b>7061</b>	<b>6675</b>	<b>6628</b>	<b>6565</b>	<b>6245</b>	<b>6968</b>	<b>82394</b>	<b>100</b>

\* In December 2010, the overdose injury group was removed due to a change in the ED's IT system. Since this time, cases have been categorised into one of the other injury groupings (e.g. 'other injury' / 'deliberate self-harm'). Such cases are however identifiable via another data field, 'presenting complaint'. Where injury group is recorded as 'other injury' and 'presenting complaint' is recorded as overdose/poisoning these cases have been categorised in this table as overdose/poisoning. Please note, during this period, 23 DSH cases also had overdose/poisoning recorded as their presenting complaint.

**Table 3: ED attendances by location of incident and month, April 2012 to March 2013<sup>^</sup>**

Location	Apr	May	Jun	Jul	Aug	Sep	Oct	Nov	Dec	Jan	Feb	Mar	Total	%
Home	4273	4371	4225	4378	4403	4218	4254	4363	4612	4472	4163	4713	52445	64
Public place	1224	1264	1240	1355	1463	1265	1092	872	859	820	832	1041	13327	16
Other	979	1031	1054	1131	1134	916	1246	1020	850	907	859	789	11916	14
Workplace	256	235	277	279	251	226	263	223	197	209	215	218	2849	3
Educational establishment	109	223	141	123	13	185	206	196	110	157	176	207	1846	2
<b>Total</b>	<b>6848</b>	<b>7127</b>	<b>6937</b>	<b>7266</b>	<b>7264</b>	<b>6810</b>	<b>7061</b>	<b>6675</b>	<b>6628</b>	<b>6565</b>	<b>6245</b>	<b>6968</b>	<b>82394</b>	<b>100</b>

<sup>^</sup>There were 11 attendances where location was unknown; these have been included in the total figure.

**Table 4: ED attendances by discharge destination and month, April 2012 to March 2013<sup>\*\*</sup>**

Discharge destination	Apr	May	Jun	Jul	Aug	Sep	Oct	Nov	Dec	Jan	Feb	Mar	Total	%
Discharged	3640	3886	3920	4043	4157	3793	3824	3622	3593	3564	3340	3950	45332	55
Admitted	2002	2003	1849	1901	1914	1835	1927	1770	1929	1822	1824	1861	22637	27
Referred	671	738	688	796	634	645	752	709	589	655	630	645	8152	10
Incomplete treatment	352	322	305	338	339	319	297	309	246	251	216	273	3567	4
Transferred	88	97	105	111	122	135	151	137	169	178	156	171	1620	2
Other	73	53	54	63	84	70	88	97	65	72	54	46	819	1
Died	22	28	16	14	14	13	22	31	37	23	25	22	267	0
<b>Total</b>	<b>6848</b>	<b>7127</b>	<b>6937</b>	<b>7266</b>	<b>7264</b>	<b>6810</b>	<b>7061</b>	<b>6675</b>	<b>6628</b>	<b>6565</b>	<b>6245</b>	<b>6968</b>	<b>82394</b>	<b>100</b>

\*\*Due to a change in the ED's IT system the coding for the discharge destination field has been updated. This report uses the new coding fields in use since December 2010.

<sup>2</sup> GP=General Practitioner, LA=Local Authority.

<sup>3</sup> Please note that all numbers less than five have been suppressed (with \*\*\*) in line with patient confidentiality; and if there is only one number less than five in a category then two numbers will be suppressed to prevent back calculations from totals.

<sup>4</sup> Please note percentages might not add to one hundred due to rounding.

<sup>5</sup> Due to low numbers firework injuries (n=20) have been included under other injury.

## Assaults

Figure 3: Number of ED assault attendances by gender and month, April 2012 to March 2013

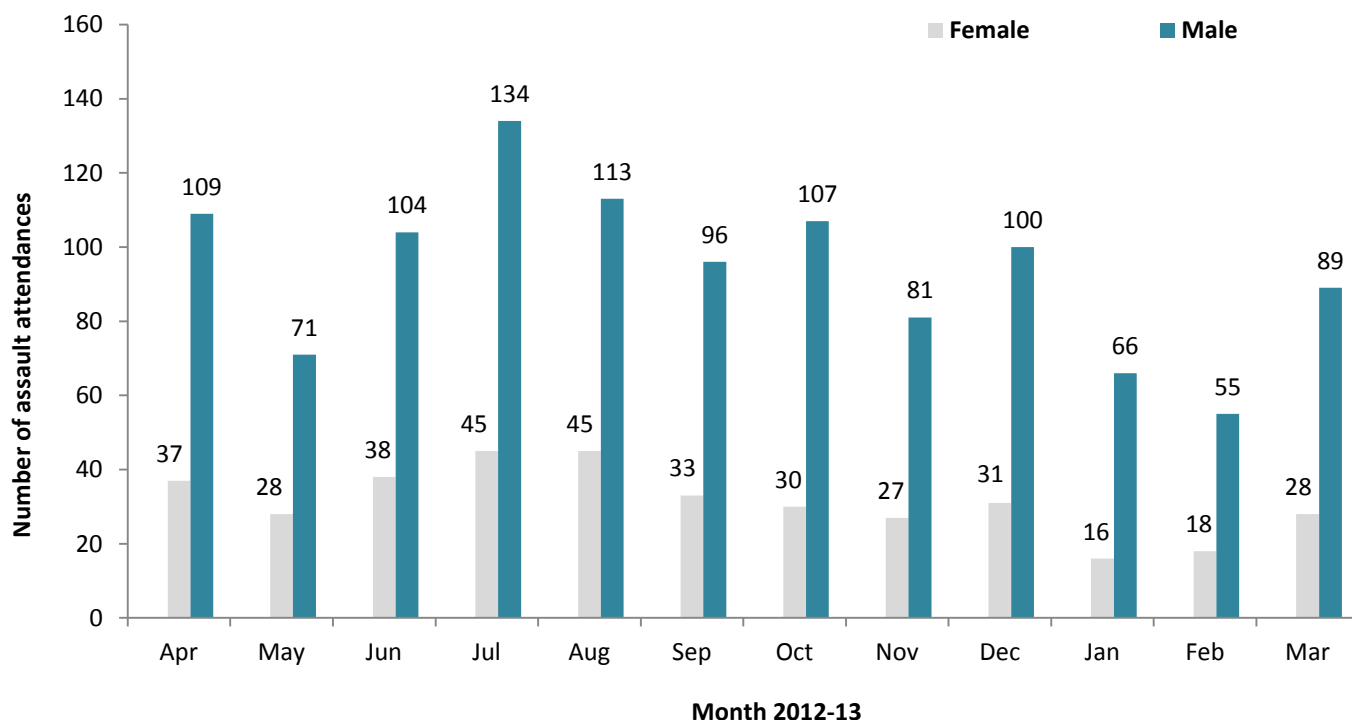


Table 5: ED assault attendances by age group and month, April 2012 to March 2013<sup>§</sup>

Age group	Apr	May	Jun	Jul	Aug	Sep	Oct	Nov	Dec	Jan	Feb	Mar	Total	%
5-14	<9	<6	***	7	***	***	5	<6	<8	***	***	<8	57	4
15-29	87	52	69	90	80	71	71	65	82	47	39	59	812	54
30-59	49	39	68	77	71	53	56	35	40	32	31	49	600	40
60 plus	***	***	***	5	***	***	5	***	***	***	***	***	32	2
<b>Total</b>	146	99	142	179	158	129	137	108	131	82	73	117	1501	100

§ There were no assault attendances in the 0-4 age group.

Table 6: ED assault attendances by location of incident and month, April 2012 to March 2013

Location	Apr	May	Jun	Jul	Aug	Sep	Oct	Nov	Dec	Jan	Feb	Mar	Total	%
Public place	76	50	60	102	102	75	68	68	67	48	37	64	817	54
Home	37	27	35	45	34	24	35	19	32	18	17	29	352	23
Other	15	12	28	27	15	24	28	14	20	13	13	17	226	15
Workplace	<16	5	<16	***	<8	***	***	***	<9	***	***	***	73	5
Educational establishment	***	5	***	***	***	***	***	***	***	***	***	***	33	2
<b>Total</b>	146	99	142	179	158	129	137	108	131	82	73	117	1501	100

Table 7: ED assault attendances by discharge destination and month, April 2012 to March 2013

Discharge destination	Apr	May	Jun	Jul	Aug	Sep	Oct	Nov	Dec	Jan	Feb	Mar	Total	%
Discharged	101	70	94	118	107	96	97	73	92	62	55	85	1050	70
Other	21	17	16	24	19	16	22	18	22	8	8	14	205	14
Follow-up	17	<9	27	26	19	<14	13	<17	15	<10	<11	<15	187	12
Admitted	7	***	5	11	13	***	5	***	***	***	***	***	59	4
<b>Total</b>	146	99	142	179	158	129	137	108	131	82	73	117	1501	100

Published April 2013

Karen Swarbrick (TIIG Researcher/Analyst)

Centre for Public Health, Liverpool John Moores University, 2nd Floor, Henry Cotton Building, Liverpool, L3 2ET

Tel: 0151 231 4498 Email: K.A.Swarbrick@ljmu.ac.uk

Website: [www.tiig.info](http://www.tiig.info) (please note data requests should be made through the website)