

## Chorley and South Ribble Hospital Emergency Department

### Monthly Bulletin: October 2010 to September 2011

This bulletin provides a breakdown of all injury attendances at Chorley and South Ribble Hospital Emergency Department (ED) between October 2010 and September 2011.

Between October 2010 and September 2011 there were 26,290 attendances to Chorley and South Ribble Hospital ED. The month with the highest attendances was July with 2,474 attendances (**Figure 1**). There were more male than female attendances presenting at Chorley and South Ribble Hospital ED (males=14,348; 55%).

**Figure 2** illustrates the age group of ED attendances for each month. The majority of ED attendances were aged 30-59 (n=8,791; 33%) and 26% were 15-29 years old (n=6,767).

**Table 1** details the injury group of ED attendances. In half (50%) of attendances, injury group was recorded as other injury. Falls accounted for 32% of attendances, sports injury 9%, road traffic collisions (RTC) 6% and assaults 3%.

**Table 2** shows the location of incident for patients attending to Chorley and South Ribble Hospital ED. The primary incident location for injury attendances was in the home where a third (33%) of injuries occurred. This was followed by other location (18%) and public place (17%). The discharge destination for injury attendances is displayed in **Table 3**. It indicates that almost six in ten (58%) attendances

were discharged with no follow-up treatment. More than one in ten (15%) attendances were discharged into the care of their GP and 13% were referred to the fracture clinic.

#### Assault attendances

Between October 2010 and September 2011 there were 667 assault attendances to Chorley and South Ribble Hospital ED. The month with the highest attendance was October with 72 attendances (**Figure 3**). There were more male than female assault attendances presenting at Chorley and South Ribble General Hospital ED (males=451; 68%).

**Table 4** details the age group of assault attendances for each month. The majority of ED assault attendances were aged 15-29 (n=347; 52%) and 39% were 30-59 years old (n=260).

**Table 5** illustrates the incident location for assault attendances to Chorley and South Ribble Hospital ED. The primary incident location for assault attendances was in a public place (34%), followed by other location (32%) and home (15%).

The discharge destination for assault attendances is displayed in **Table 6**. It indicates that over half (53%) of assault attendances were discharged with no follow-up treatment. Over a third required follow-up treatment (35%) and 4% of assault attendees were admitted into hospital.

Figure 1: Gender of ED injury attendances by month, October 2010 to September 2011

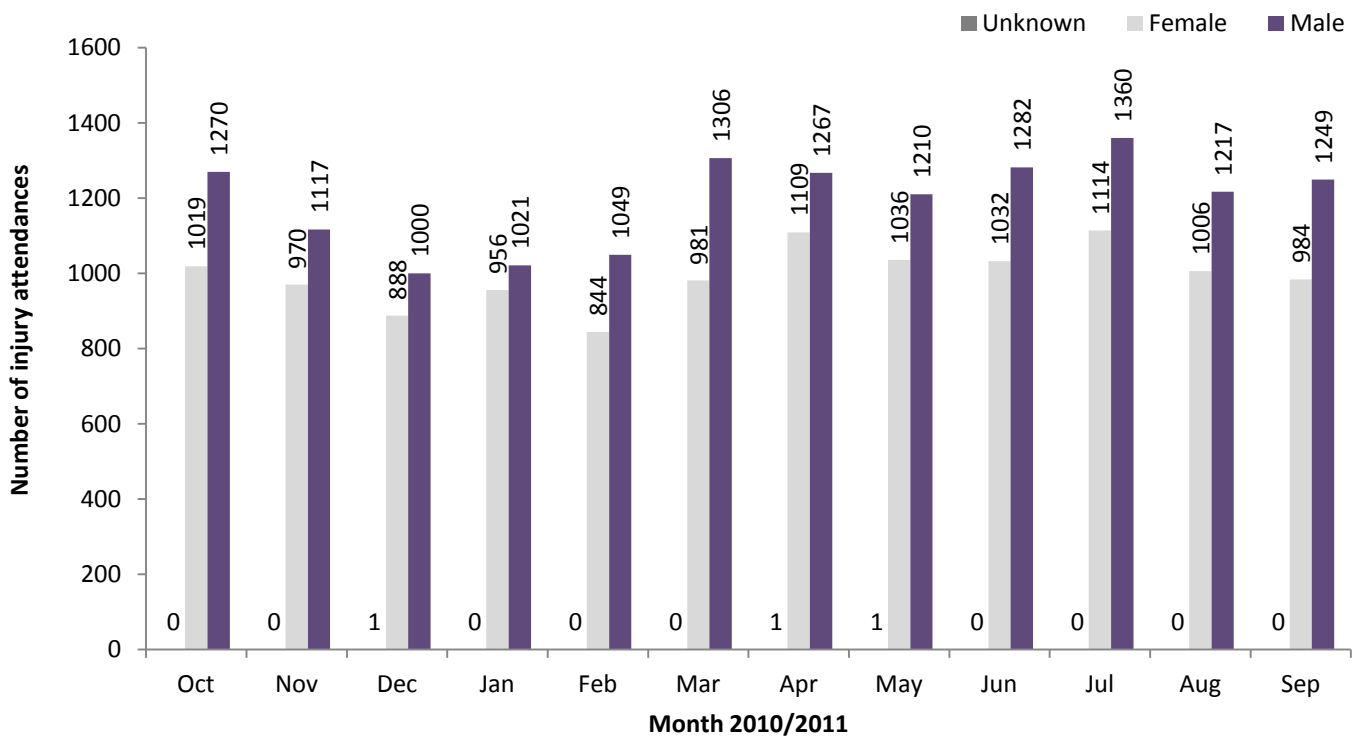


Figure 2: Age group of ED injury attendances by month, October 2010 to September 2011

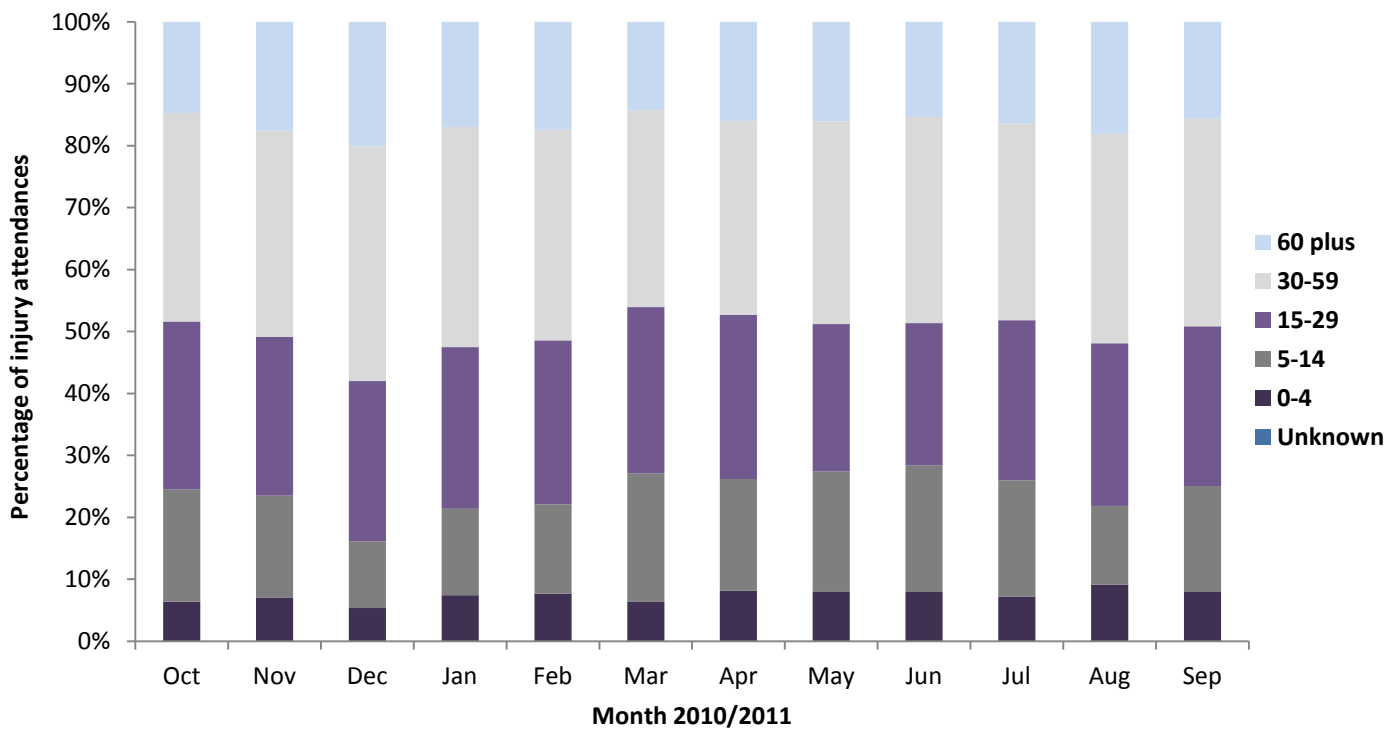


Table 1: ED injury attendances by injury group and month, October 2010 to September 2011<sup>1</sup>

Injury group	Oct	Nov	Dec	Jan	Feb	Mar	Apr	May	Jun	Jul	Aug	Sep	Total	%
Other injury	1120	1057	788	914	1028	1189	1259	1126	1196	1327	1105	1077	13186	50
Fall	631	629	834	699	541	617	717	702	715	743	752	737	8317	32
Sports injury	257	159	59	152	147	280	233	202	194	200	189	218	2290	9
RTC	198	173	144	144	106	130	113	157	141	141	124	131	1702	6
Assault	72	58	55	55	59	59	50	48	57	50	46	58	667	3
Deliberate self-harm	11	11	9	13	12	12	5	12	11	13	7	12	128	0
<b>Total</b>	<b>2289</b>	<b>2087</b>	<b>1889</b>	<b>1977</b>	<b>1893</b>	<b>2287</b>	<b>2377</b>	<b>2247</b>	<b>2314</b>	<b>2474</b>	<b>2223</b>	<b>2233</b>	<b>26290</b>	<b>100</b>

<sup>1</sup> Please note percentages might not add to one hundred due to rounding.

**Table 2: ED injury attendances by location of incident and month, October 2010 to September 2011<sup>23</sup>**

Location	Oct	Nov	Dec	Jan	Feb	Mar	Apr	May	Jun	Jul	Aug	Sep	Total	%
Home	764	716	638	693	658	679	758	755	695	781	796	693	8626	33
Other	426	397	441	409	328	411	408	441	389	431	246	357	4684	18
Public place	331	270	408	323	236	308	420	344	408	449	472	384	4353	17
Work	215	242	153	171	228	248	238	201	246	233	232	263	2670	10
Sport	219	128	43	126	151	224	211	177	194	197	180	190	2040	8
Educational establishment	150	187	92	130	132	249	62	136	137	117	5	122	1519	6
Home other persons	60	58	41	43	51	53	79	45	62	66	78	78	714	3
Holiday	36	22	12	22	32	29	35	34	57	59	73	49	460	2
Garden	32	16	20	17	15	29	88	54	49	64	41	26	451	2
Public park/playground	18	7	***	***	9	19	30	22	25	32	52	23	246	1
Public building	16	14	18	19	27	12	17	14	8	20	12	13	190	1
Nursery	8	9	8	***	9	12	18	***	16	10	9	12	121	0
Special event	***	6	***	***	***	***	***	5	13	8	16	14	77	0
Prison	***	9	***	8	6	6	***	9	6	***	9	7	76	0
Hospital	***	***	***	***	***	***	6	***	6	***	***	***	39	0
Public transport	***	***	***	***	***	***	***	***	***	***	***	***	<21	0
Bus station	***	***	***	***	***	***	***	***	***	***	***	***	***	0
<b>Total</b>	<b>2289</b>	<b>2087</b>	<b>1889</b>	<b>1977</b>	<b>1893</b>	<b>2287</b>	<b>2377</b>	<b>2247</b>	<b>2314</b>	<b>2474</b>	<b>2223</b>	<b>2233</b>	<b>26290</b>	<b>100</b>

**Table 3: ED injury attendances by discharge destination and month, October 2010 to September 2011<sup>4</sup>**

Discharge destination	Oct	Nov	Dec	Jan	Feb	Mar	Apr	May	Jun	Jul	Aug	Sep	Total	%
Discharged - no follow-up	1342	1240	1104	1088	1117	1301	1340	1370	1307	1367	1302	1343	15221	58
Discharged - follow-up by GP	340	276	240	331	279	379	349	326	371	377	369	303	3940	15
Fracture clinic	286	270	290	256	211	274	307	257	307	331	262	279	3330	13
ED clinic	93	68	57	71	60	87	120	74	85	102	70	76	963	4
Admitted RPH	67	39	42	53	52	55	73	55	57	61	53	39	646	2
Left before being treated	39	54	62	53	46	57	51	44	45	73	30	48	602	2
Outpatient clinic	49	41	27	40	42	55	56	41	51	65	57	58	582	2
Admitted CDGH	39	49	34	43	42	42	40	41	42	55	50	36	513	2
Other healthcare professional	20	37	18	28	34	30	31	32	34	27	20	36	347	1
Left having refused treatment	7	5	8	8	***	***	5	5	12	5	5	***	69	0
Transferred to other HCP	***	5	5	***	6	***	***	***	***	8	***	5	46	0
Police custody	***	***	***	***	***	***	***	***	***	***	***	***	6	0
Other	***	***	***	***	***	***	***	***	***	***	***	***	6	0
<b>Total</b>	<b>2289</b>	<b>2087</b>	<b>1889</b>	<b>1977</b>	<b>1893</b>	<b>2287</b>	<b>2377</b>	<b>2247</b>	<b>2314</b>	<b>2474</b>	<b>2223</b>	<b>2233</b>	<b>26290</b>	<b>100</b>

## Assaults

**Table 4: ED assault attendances by age group and month, October 2010 to September 2011<sup>5</sup>**

Age group	Oct	Nov	Dec	Jan	Feb	Mar	Apr	May	Jun	Jul	Aug	Sep	Total	%
5-14	***	<6	***	***	***	***	<6	<7	<6	<10	***	<7	50	7
15-29	39	22	33	28	32	40	22	17	29	26	27	32	347	52
30-59	30	31	21	23	24	14	20	25	23	15	16	18	260	39
60 plus	***	***	***	***	***	***	***	***	***	***	***	***	10	1
<b>Total</b>	<b>72</b>	<b>58</b>	<b>55</b>	<b>55</b>	<b>59</b>	<b>59</b>	<b>50</b>	<b>48</b>	<b>57</b>	<b>50</b>	<b>46</b>	<b>58</b>	<b>667</b>	<b>100</b>

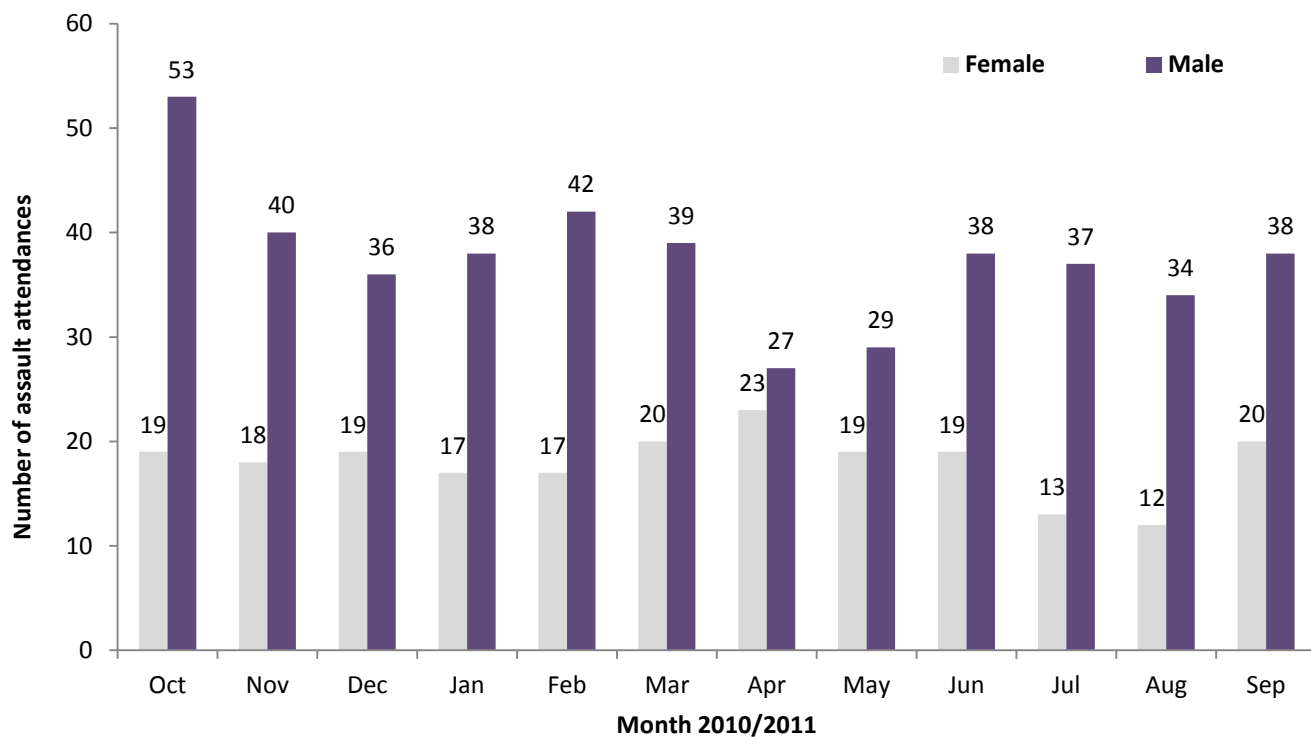
<sup>2</sup>Please note that all numbers less than five have been suppressed (with \*\*\*) in line with patient confidentiality and if there is only one number less than five in a category then two numbers will be suppressed to prevent back calculations from totals.

<sup>3</sup> Educational establishment includes: educational establishment; school other; school; school playground; and, school sport. Public place includes public place and playing out.

<sup>4</sup> Admitted to CDGH includes: admitted, admitted to Chorley and South Ribble Hospital (CDGH), admitted to Healey/Yarrow Ward. Admitted to RPH includes: admitted to Royal Preston Hospital (RPH) and admitted to the Avondale Unit. Other includes: primary care, other, dead on arrival and died in department. HCP=Health care provider and GP=general practitioner.

<sup>5</sup> There were no attendances in the 0-4 age group.

**Figure 3: Number of ED assault attendances by gender and month, October 2010 to September 2011**



**Table 5: ED assault attendances by incident location and month, October 2010 to September 2011**

Location	Oct	Nov	Dec	Jan	Feb	Mar	Apr	May	Jun	Jul	Aug	Sep	Total	%
Public place	24	23	25	18	23	18	18	12	14	11	21	20	227	34
Other	27	17	10	19	18	19	16	19	25	19	10	15	214	32
Home	14	6	11	8	9	9	13	7	7	<7	7	***	101	15
Work	***	***	***	***	***	***	***	***	***	***	5	7	38	6
Home other	***	***	***	***	***	***	***	***	***	***	***	***	27	4
Educational establishment	***	***	***	***	***	***	***	***	***	***	***	***	23	3
Public building	***	***	***	***	***	***	***	***	***	***	***	***	12	2
Prison	***	***	***	***	***	***	***	***	***	***	***	***	11	2
Public park/playground	***	***	***	***	***	***	***	***	***	***	***	***	6	1
Garden	***	***	***	***	***	***	***	***	***	***	***	***	***	0
Holiday	***	***	***	***	***	***	***	***	***	***	***	***	***	1
Nursery	***	***	***	***	***	***	***	***	***	***	***	***	***	0
Special event	***	***	***	***	***	***	***	***	***	***	***	***	***	0
Sport	***	***	***	***	***	***	***	***	***	***	***	***	***	0
<b>Total</b>	<b>72</b>	<b>58</b>	<b>55</b>	<b>55</b>	<b>59</b>	<b>59</b>	<b>50</b>	<b>48</b>	<b>57</b>	<b>50</b>	<b>46</b>	<b>58</b>	<b>667</b>	<b>100</b>

**Table 6: ED assault attendances by discharge destination and month, October 2010 to September 2011**

Disposal	Oct	Nov	Dec	Jan	Feb	Mar	Apr	May	Jun	Jul	Aug	Sep	Total	%
Discharged	39	35	35	35	32	25	20	27	29	24	25	29	355	53
Follow-up	26	17	14	16	20	25	22	18	22	17	19	19	235	35
Other	***	***	***	***	***	***	***	***	***	***	***	***	47	7
Admitted	***	***	***	***	***	***	***	***	***	***	***	***	30	4
<b>Total</b>	<b>72</b>	<b>58</b>	<b>55</b>	<b>55</b>	<b>59</b>	<b>59</b>	<b>50</b>	<b>48</b>	<b>57</b>	<b>50</b>	<b>46</b>	<b>58</b>	<b>667</b>	<b>100</b>