

## Chorley and South Ribble Hospital Emergency Department

### Monthly Bulletin: January to December 2011

This bulletin provides a breakdown of all injury attendances at Chorley and South Ribble Hospital Emergency Department (ED) between January and December 2011.

Between January and December 2011 there were 26,025 attendances to Chorley and South Ribble Hospital ED. The month with the highest attendances was July with 2,474 attendances (**Figure 1**). There were more male than female attendances presenting at Chorley and South Ribble Hospital ED (males=14,191; 55%).

**Figure 2** illustrates the age group of ED attendances for each month. The majority of ED attendances were aged 30-59 (n=8,701; 33%) and 26% were 15-29 years old (n=6,687).

**Table 1** details the injury group of ED attendances. In half (50%) of all attendances, injury group was recorded as other injury. Falls accounted for 32% of attendances, sports injury 9%, road traffic collisions (RTC) 6% and assaults 2%.

**Table 2** shows the location of incident for patients attending to Chorley and South Ribble Hospital ED. The primary incident location for injury attendances was in the home where a third (33%) of injuries occurred. This was followed by other location (17%) and public place (16%). The discharge destination for injury attendances is displayed in **Table 3**. It indicates that almost six in ten (58%) attendances

were discharged with no follow-up treatment. More than one in ten (15%) attendances were discharged into the care of their GP and 12% were referred to the fracture clinic.

#### Assault attendances

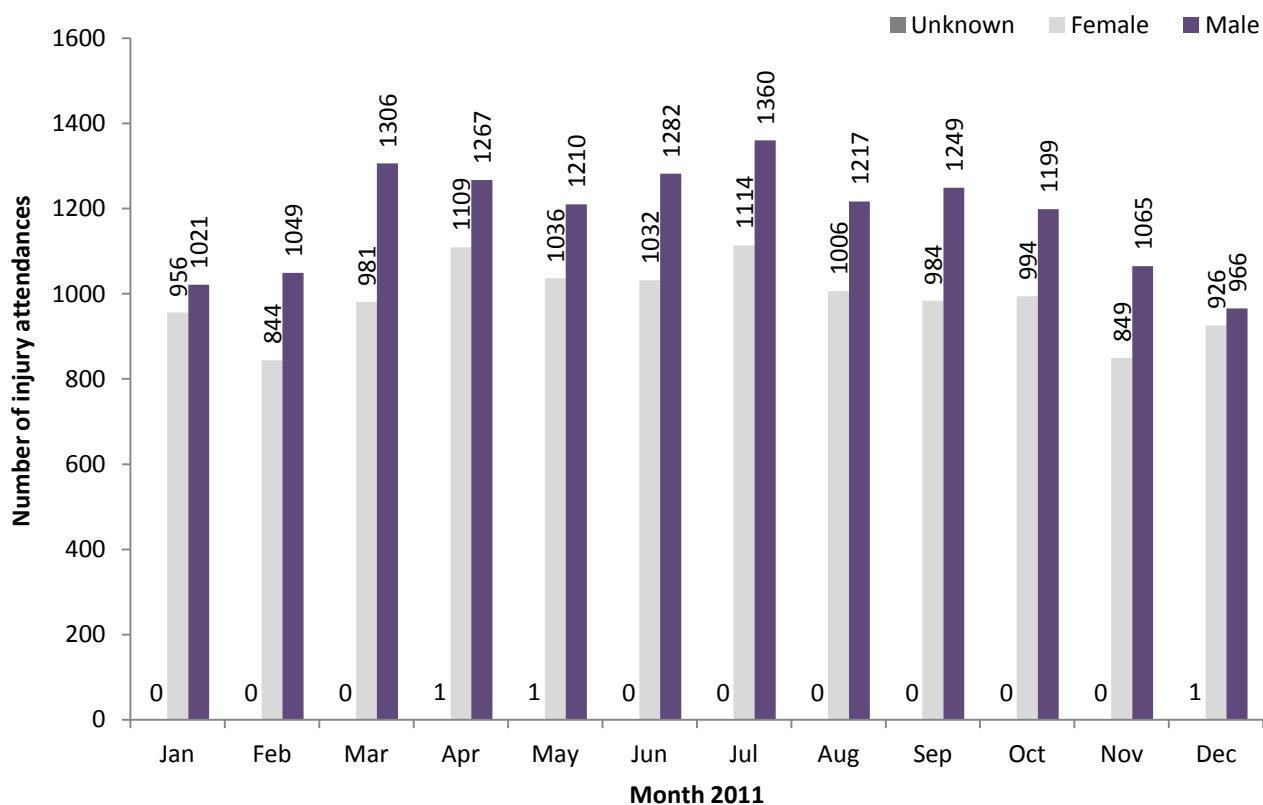
Between January and December 2011 there were 649 assault attendances to Chorley and South Ribble Hospital ED. The month with the highest attendance was December with 64 attendances (**Figure 3**). There were more male than female assault attendances presenting at Chorley and South Ribble General Hospital ED (males=432; 67%).

**Table 4** details the age group of assault attendances for each month. The majority of ED assault attendances were aged 15-29 (n=341; 53%) and 38% were 30-59 years old (n=247).

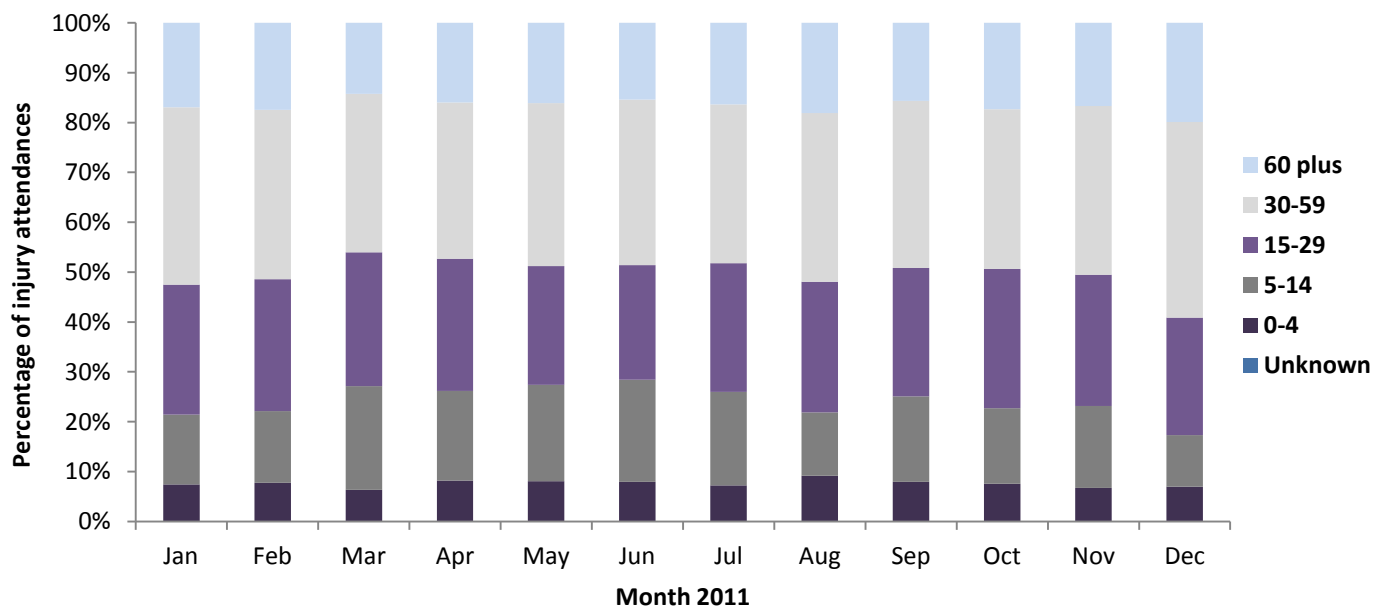
**Table 5** illustrates the incident location for assault attendances to Chorley and South Ribble Hospital ED. The primary incident locations for assault attendances were in a public place (33%) and other location (33%), followed by in the home (13%).

The discharge destination for assault attendances is displayed in **Table 6**. It indicates that over half (52%) of assault attendances were discharged with no follow-up treatment. Over a third required follow-up treatment (37%) and 4% of assault attendees were admitted into hospital.

**Figure 1: Gender of ED injury attendances by month, January to December 2011**



**Figure 2: Age group of ED injury attendances by month, January to December 2011**



**Table 1: ED injury attendances by injury group and month, January to December 2011**

Injury group	Jan	Feb	Mar	Apr	May	Jun	Jul	Aug	Sep	Oct	Nov	Dec	Total	%
Other injury	914	1028	1189	1259	1126	1196	1327	1105	1077	1075	907	898	13101	50
Fall	699	541	617	717	702	715	743	752	737	699	642	686	8250	32
Sports injury	152	147	280	233	202	194	200	189	218	207	178	69	2269	9
RTC	144	106	130	113	157	141	141	124	131	138	130	164	1619	6
Assault	55	59	59	50	48	57	50	46	58	57	46	64	649	2
Deliberate self-harm	13	12	12	5	12	11	13	7	12	17	11	12	137	1
<b>Total</b>	<b>1977</b>	<b>1893</b>	<b>2287</b>	<b>2377</b>	<b>2247</b>	<b>2314</b>	<b>2474</b>	<b>2223</b>	<b>2233</b>	<b>2193</b>	<b>1914</b>	<b>1893</b>	<b>26025</b>	<b>100</b>

**Table 2: ED injury attendances by location of incident and month, January to December 2011<sup>1,2</sup>**

Location	Jan	Feb	Mar	Apr	May	Jun	Jul	Aug	Sep	Oct	Nov	Dec	Total	%
Home	693	658	679	758	755	695	781	796	693	727	630	737	8602	33
Other	409	328	411	408	441	389	431	246	357	366	318	396	4500	17
Public place	323	236	308	420	344	408	449	472	384	344	266	280	4234	16
Work	171	228	248	238	201	246	233	232	263	249	231	194	2734	11
Sport	126	151	224	211	177	194	197	180	190	180	162	56	2048	8
Educational establishment	130	132	249	62	136	137	117	5	122	125	156	64	1435	6
Home other persons	43	51	53	79	45	62	66	78	78	79	52	54	740	3
Holiday	22	32	29	35	34	57	59	73	49	37	14	12	453	2
Garden	17	15	29	88	54	49	64	41	26	10	8	13	414	2
Public park/playground	6	9	19	30	22	25	32	52	23	19	21	11	269	1
Public building	19	27	12	17	14	8	20	12	13	24	24	44	234	1
Nursery	***	9	12	18	6	16	10	9	12	<6	9	7	117	0
Special event	***	***	***	***	5	13	8	16	14	11	14	10	101	0
Prison	8	6	6	***	9	6	4	9	7	8	***	8	77	0
Hospital	***	***	***	6	***	6	***	***	***	6	***	***	41	0
Public transport	***	***	***	***	***	***	***	***	***	***	***	***	23	0
Bus station	***	***	***	***	***	***	***	***	***	***	***	***	3	0
<b>Total</b>	<b>1977</b>	<b>1893</b>	<b>2287</b>	<b>2377</b>	<b>2247</b>	<b>2314</b>	<b>2474</b>	<b>2223</b>	<b>2233</b>	<b>2193</b>	<b>1914</b>	<b>1893</b>	<b>26025</b>	<b>100</b>

**Table 3: ED injury attendances by discharge destination and month, January to December 2011<sup>3</sup>**

Discharge destination	Jan	Feb	Mar	Apr	May	Jun	Jul	Aug	Sep	Oct	Nov	Dec	Total	%
Discharged - no follow-up	1088	1117	1301	1340	1370	1307	1367	1302	1343	1299	1180	1045	15059	58
Discharged - follow-up by GP	331	279	379	349	326	371	377	369	303	308	244	330	3966	15
Fracture clinic	256	211	274	307	257	307	331	262	279	257	225	233	3199	12
ED clinic	71	60	87	120	74	85	102	70	76	85	56	50	936	4
Admitted RPH	53	52	55	73	55	57	61	53	39	46	39	56	639	2
Outpatient clinic	40	42	55	56	41	51	65	57	58	65	50	48	628	2
Admitted CDGH	43	42	42	40	41	42	55	50	36	53	53	53	550	2
Left before being treated	53	46	57	51	44	45	73	30	48	28	29	28	532	2
Other healthcare professional	28	34	30	31	32	34	27	20	36	43	34	36	385	1
Left having refused treatment	8	***	***	5	5	12	5	5	***	***	***	***	55	0
Transferred to other HCP	***	6	***	***	***	***	8	***	5	5	***	7	48	0
Police custody	***	***	***	***	***	***	***	***	6	***	***	***	<25	0
Other	***	***	***	***	***	***	***	***	***	***	***	***	***	0
<b>Total</b>	<b>1977</b>	<b>1893</b>	<b>2287</b>	<b>2377</b>	<b>2247</b>	<b>2314</b>	<b>2474</b>	<b>2223</b>	<b>2233</b>	<b>2193</b>	<b>1914</b>	<b>1893</b>	<b>26025</b>	<b>100</b>

## Assaults

**Table 4: ED assault attendances by age group and month, January to December 2011<sup>4</sup>**

Age group	Jan	Feb	Mar	Apr	May	Jun	Jul	Aug	Sep	Oct	Nov	Dec	Total	%
5-14	***	***	***	5	<7	<6	<10	***	<7	***	***	***	46	7
15-29	28	32	40	22	17	29	26	27	32	32	25	31	341	53
30-59	23	24	14	20	25	23	15	16	18	19	18	32	247	38
60 plus	***	***	***	***	***	***	***	***	***	<6	***	***	15	2
<b>Total</b>	<b>55</b>	<b>59</b>	<b>59</b>	<b>50</b>	<b>48</b>	<b>57</b>	<b>50</b>	<b>46</b>	<b>58</b>	<b>57</b>	<b>46</b>	<b>64</b>	<b>649</b>	<b>100</b>

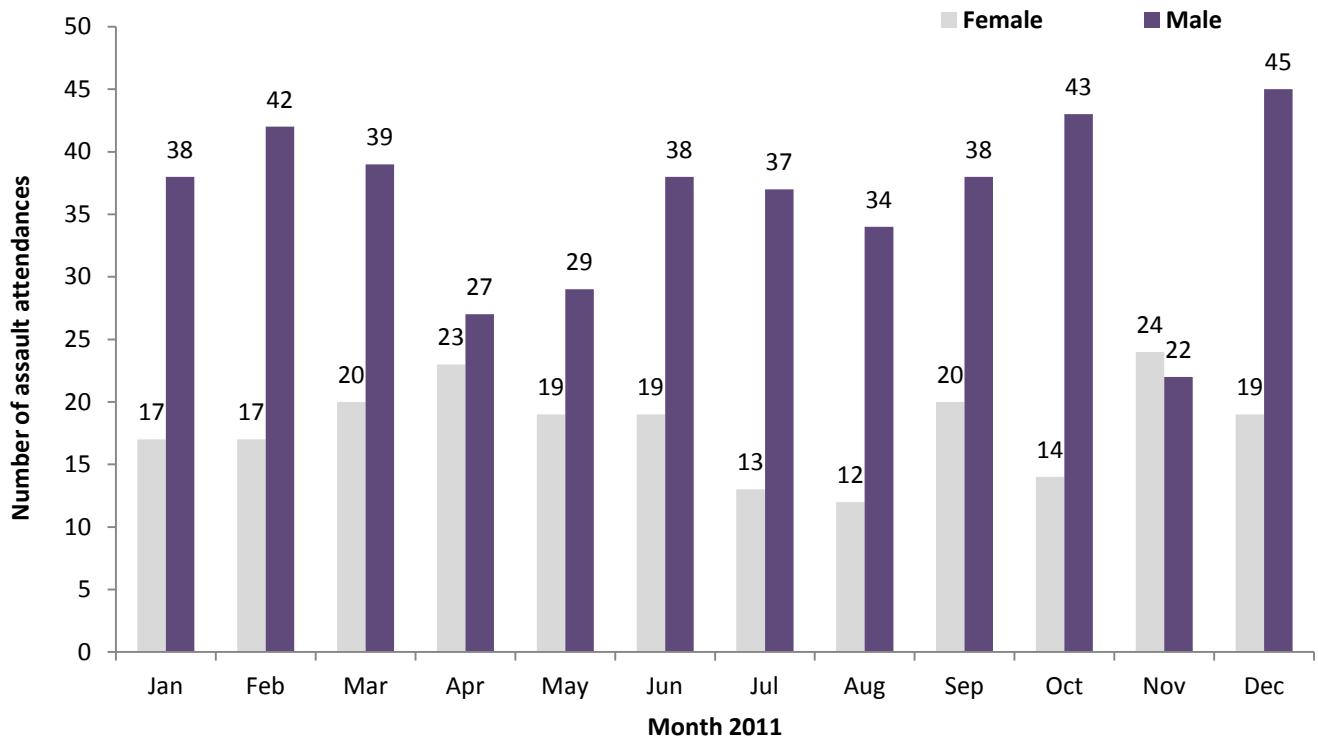
<sup>1</sup>Please note that all numbers less than five have been suppressed (with \*\*\*) in line with patient confidentiality and if there is only one number less than five in a category then two numbers will be suppressed to prevent back calculations from totals.

<sup>2</sup> Educational establishment includes: educational establishment; school other; school; school playground; and, school sport. Public place includes public place and playing out.

<sup>3</sup> Admitted to CDGH includes: admitted, admitted to Chorley and South Ribble Hospital (CDGH), admitted to Healey/Yarrow Ward. Admitted to RPH includes: admitted to Royal Preston Hospital (RPH) and admitted to the Avondale Unit. Other includes: primary care, other, dead on arrival and died in department. HCP=Health care provider and GP=general practitioner.

<sup>4</sup> There were no attendances in the 0-4 age group.

**Figure 3: Number of ED assault attendances by gender and month, January to December 2011**



**Table 5: ED assault attendances by incident location and month, January to December 2011**

Location	Jan	Feb	Mar	Apr	May	Jun	Jul	Aug	Sep	Oct	Nov	Dec	Total	%
Public place	18	23	18	18	12	14	11	21	20	22	18	22	217	33
Other	19	18	19	16	19	25	19	10	15	20	13	18	211	33
Home	8	9	9	13	7	7	6	7	***	7	***	7	85	13
Work	***	***	***	***	***	***	***	5	7	***	7	7	46	7
Home other	***	***	***	***	***	***	***	***	***	***	***	***	25	4
Educational establishment	***	***	***	***	***	***	***	***	***	***	***	***	23	4
Public building	***	***	***	***	***	***	***	***	***	***	***	5	18	3
Prison	***	***	***	***	***	***	***	***	***	***	***	***	12	2
Public park/playground	***	***	***	***	***	***	***	***	***	***	***	***	7	1
Garden	***	***	***	***	***	***	***	***	***	***	***	***	***	0
Holiday	***	***	***	***	***	***	***	***	***	***	***	***	***	0
Nursery	***	***	***	***	***	***	***	***	***	***	***	***	***	0
Special event	***	***	***	***	***	***	***	***	***	***	***	***	***	0
Sport	***	***	***	***	***	***	***	***	***	***	***	***	***	0
<b>Total</b>	<b>55</b>	<b>59</b>	<b>59</b>	<b>50</b>	<b>48</b>	<b>57</b>	<b>50</b>	<b>46</b>	<b>58</b>	<b>57</b>	<b>46</b>	<b>64</b>	<b>649</b>	<b>100</b>

**Table 6: ED assault attendances by discharge destination and month, January to December 2011**

Disposal	Jan	Feb	Mar	Apr	May	Jun	Jul	Aug	Sep	Oct	Nov	Dec	Total	%
Discharged	35	32	25	20	27	29	24	25	29	30	26	33	335	52
Follow-up	16	20	25	22	18	22	17	19	19	24	17	23	242	37
Other	***	***	***	***	***	***	<8	***	<9	***	***	***	43	7
Admitted	***	5	5	5	***	***	***	***	***	***	***	***	29	4
<b>Total</b>	<b>55</b>	<b>59</b>	<b>59</b>	<b>50</b>	<b>48</b>	<b>57</b>	<b>50</b>	<b>46</b>	<b>58</b>	<b>57</b>	<b>46</b>	<b>64</b>	<b>649</b>	<b>100</b>

Published February 2012

Johnathan Rooney (TIIG Officer)

Centre for Public Health, Liverpool John Moores University, 2nd Floor, Henry Cotton Campus, Liverpool, L3 2ET

Tel: 0151 231 4513 Email: j.rooney@ljmu.ac.uk

Website: [www.tiig.info](http://www.tiig.info) (please note data requests should be made through the website)