

Chorley and South Ribble Hospital Emergency Department

Monthly Bulletin: January to December 2012

This bulletin provides a breakdown of all injury attendances at Chorley and South Ribble Hospital Emergency Department (ED) between January and December 2012.

Between January and December 2012 there were 24,476 attendances to Chorley and South Ribble Hospital ED. The month with the highest attendances was May with 2,370 attendances (**Figure 1**). There were more male than female attendances presenting at Chorley and South Ribble Hospital ED (males=13,153; 54%).

Figure 2 illustrates the age group of ED attendances for each month. The majority of ED attendances were aged 30-59 (n=8,066; 33%) and 25% were 15-29 years old (n=6,057).

Table 1 details the injury group of ED attendances. In over half (51%) of all attendances, injury group was recorded as other injury. Falls accounted for 32% of attendances, sports injury 8%, road traffic collisions (RTC) 6% and assaults 3%.

Table 2 shows the location of incident for patients attending Chorley and South Ribble Hospital ED. The primary incident location for injury attendances was in the home, where over a third (35%) of injuries occurred. This was followed by other location (17%) and public place (15%). The discharge destination for injury attendances is displayed in **Table 3**. It indicates that almost six in ten (55%) attendances were discharged with no follow-up treatment.

Nearly two in ten (18%) attendances were discharged into the care of their GP and 12% were referred to the fracture clinic.

Assault attendances

Between January and December 2012 there were 661 assault attendances to Chorley and South Ribble Hospital ED. The month with the highest attendance was August with 68 attendances (**Figure 3**). There were more male than female assault attendances presenting at Chorley and South Ribble General Hospital ED (males=444; 67%).

Table 4 details the age group of assault attendances for each month. The majority of ED assault attendances were aged 15-29 (n=337; 51%) and 42% were 30-59 years old (n=276).

Table 5 illustrates the incident location for assault attendances to Chorley and South Ribble Hospital ED. The primary incident locations for assault attendances were recorded as other location (29%) and in a public place (25%), followed by in the home (15%).

The discharge destination for assault attendances is displayed in **Table 6**. It indicates that almost half (48%) of assault attendances were discharged with no follow-up treatment. Nearly four in ten required follow-up treatment (38%) and 4% of assault attendees were admitted into hospital.

Figure 1: Gender of ED injury attendances by month, January to December 2012

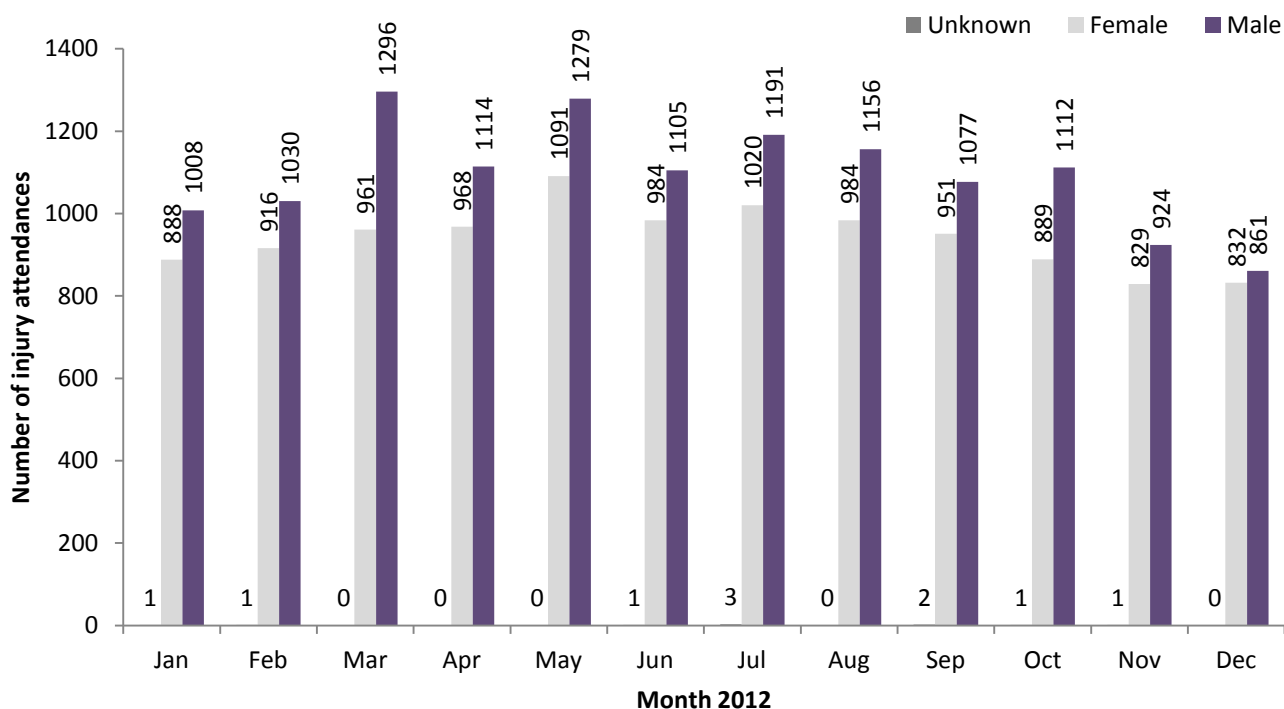


Figure 2: Age group of ED injury attendances by month, January to December 2012

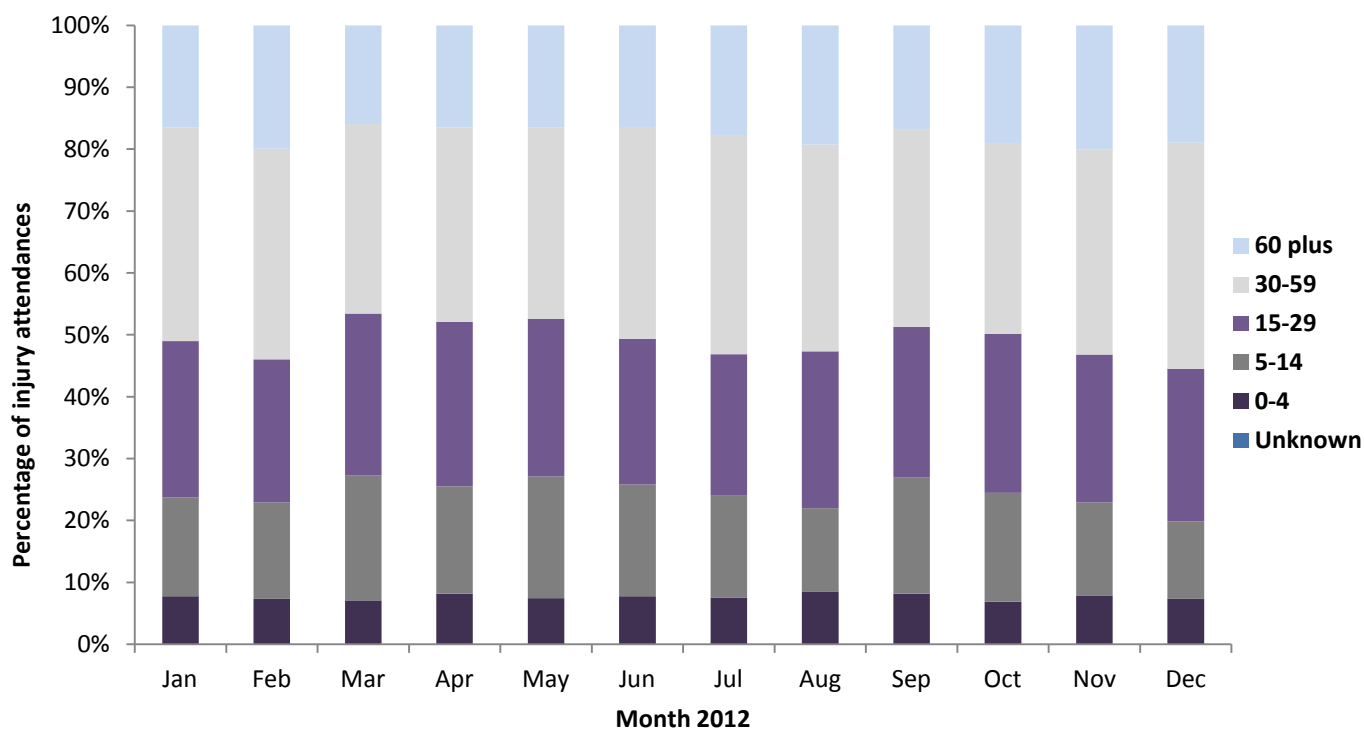


Table 1: ED injury attendances by injury group and month, January to December 2012¹

Injury group	Jan	Feb	Mar	Apr	May	Jun	Jul	Aug	Sep	Oct	Nov	Dec	Total	%
Other injury	928	917	1167	1074	1237	1155	1182	1182	1044	967	835	807	12495	51
Fall	587	735	640	630	713	633	690	645	640	640	580	623	7756	32
Sports injury	161	136	248	202	233	128	172	125	193	234	147	100	2079	8
RTC	153	101	128	<111	120	<123	122	115	95	109	<139	<112	1424	6
Assault	58	51	67	63	60	49	43	68	53	46	52	51	661	3
Deliberate self-harm	10	7	7	***	7	***	5	5	5	6	***	***	61	0
Total	1897	1947	2257	2082	2370	2090	2214	2140	2030	2002	1754	1693	24476	100

¹Please note that all numbers less than five have been suppressed (with ***) in line with patient confidentiality and if there is only one number less than five in a category then two numbers will be suppressed to prevent back calculations from totals.

Table 2: ED injury attendances by location of incident and month, January to December 2012²

Location	Jan	Feb	Mar	Apr	May	Jun	Jul	Aug	Sep	Oct	Nov	Dec	Total	%
Home	674	714	694	724	804	699	821	764	741	688	636	665	8624	35
Other	311	338	345	360	419	434	352	310	301	303	289	300	4062	17
Public place	260	289	327	302	305	304	321	414	326	250	224	231	3553	15
Work	192	196	233	211	207	192	223	198	188	214	210	163	2427	10
Sport	133	143	214	195	200	133	180	150	165	200	133	85	1931	8
Educational establishment	153	117	212	99	175	103	<77	***	108	151	128	80	1406	6
Home other persons	69	56	69	54	63	72	73	87	61	47	43	77	771	3
Public building	41	34	28	24	26	31	43	29	31	54	37	55	433	2
Garden	12	8	47	30	71	37	35	56	32	26	8	9	371	2
Holiday	15	21	32	29	34	36	44	60	24	26	21	10	352	1
Public park/playground	8	7	24	25	31	23	23	39	23	17	14	5	239	1
Nursery	9	10	16	7	17	11	6	6	12	7	***	***	106	0
Special event	5	***	***	11	***	6	6	5	7	7	5	7	67	0
Prison	9	***	***	9	7	0	***	7	***	6	***	***	55	0
Hospital	***	8	5	***	***	5	5	6	5	***	***	***	45	0
Public transport	***	***	***	***	***	***	***	<6	***	***	***	***	<33	0
Bus station	***	***	***	***	***	***	***	***	***	***	***	***	***	0
Total	1897	1947	2257	2082	2370	2090	2214	2140	2030	2002	1754	1693	24476	100

Table 3: ED injury attendances by discharge destination and month, January to December 2012^{3,4}

Discharge destination	Jan	Feb	Mar	Apr	May	Jun	Jul	Aug	Sep	Oct	Nov	Dec	Total	%
Discharged - no follow-up	1077	1133	1294	1072	1235	1125	1126	1202	1046	1080	1134	1060	13584	55
Discharged - follow-up by GP	345	339	387	431	471	439	508	368	424	366	168	157	4403	18
Fracture clinic	222	240	253	272	298	253	259	227	265	251	214	244	2998	12
Left before being treated	32	28	65	66	76	50	75	103	69	73	48	46	731	3
ED clinic	62	57	69	64	67	68	60	64	60	64	48	34	717	3
Outpatient clinic	44	32	70	64	62	37	50	45	31	43	30	28	536	2
Admitted RPH	39	39	50	43	63	41	51	37	42	28	32	42	507	2
Admitted CDGH	41	42	30	39	39	36	39	49	39	40	42	33	469	2
Other healthcare professional	26	28	32	24	47	31	36	35	45	48	34	36	422	2
Left having refused treatment	***	5	***	***	***	***	***	***	***	***	***	9	40	0
Transferred to other HCP	***	***	***	***	9	***	***	***	***	***	***	***	36	0
Police custody	***	***	***	***	***	5	***	***	***	***	***	***	27	0
Other	***	***	***	***	***	***	***	***	***	***	***	***	6	0
Total	1897	1947	2257	2082	2370	2090	2214	2140	2030	2002	1754	1693	24476	100

Assaults

Table 4: ED assault attendances by age group and month, January to December 2012⁵

Age group	Jan	Feb	Mar	Apr	May	Jun	Jul	Aug	Sep	Oct	Nov	Dec	Total	%
5-14	***	***	7	***	***	***	***	***	***	***	***	***	30	5
15-29	24	24	30	29	30	28	29	38	31	25	22	27	337	51
30-59	28	24	26	29	25	18	12	28	21	19	26	20	276	42
60 plus	***	***	***	***	***	***	***	***	***	***	***	***	17	3
Total	58	51	67	63	60	49	43	68	53	46	52	51	661	100

² Educational establishment includes: educational establishment; school other; school; school playground; and school sport. Public place includes public place and playing out.

³ Admitted to CDGH includes: admitted, admitted to Chorley and South Ribble Hospital (CDGH) and admitted to Healey/Yarrow Ward. Admitted to RPH includes: admitted to Royal Preston Hospital (RPH) and admitted to the Avondale Unit. Other includes: primary care, other, dead on arrival and died in department. HCP=Health care provider and GP=general practitioner.

⁴ Please note percentages might not add to one hundred due to rounding.

⁵ There were <5 attendances in the 0-4 age group; the figures for this age group have been included in the total figure.

Figure 3: Number of ED assault attendances by gender and month, January to December 2012

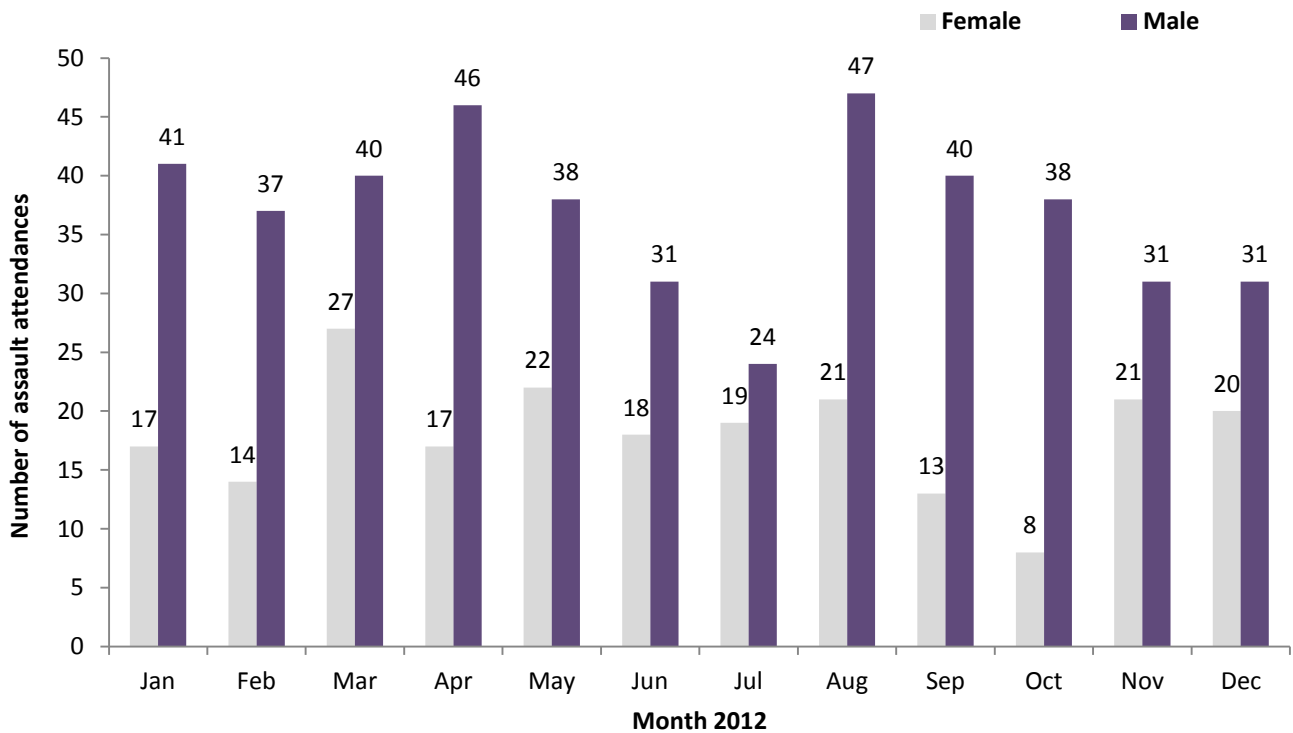


Table 5: ED assault attendances by incident location and month, January to December 2012

Location	Jan	Feb	Mar	Apr	May	Jun	Jul	Aug	Sep	Oct	Nov	Dec	Total	%
Other	15	14	12	26	16	18	14	16	24	14	8	15	192	29
Public place	12	15	17	25	15	9	11	21	6	13	11	11	166	25
Home	11	10	11	***	10	6	7	13	5	***	7	11	97	15
Public building	7	8	6	***	5	<6	9	9	9	9	10	8	87	13
Home other	8	***	6	***	***	***	***	***	***	***	5	5	44	7
Work	***	***	7	***	***	5	***	***	6	5	5	***	38	6
Educational establishment	***	***	5	***	***	***	***	***	***	***	***	***	18	3
Prison	***	***	***	***	***	***	***	***	***	***	***	***	8	1
Holiday	***	***	***	***	***	***	***	***	***	***	***	***	5	1
Public park/playground	***	***	***	***	***	***	***	***	***	***	***	***	***	1
Special event	***	***	***	***	***	***	***	***	***	***	***	***	***	0
Sport	***	***	***	***	***	***	***	***	***	***	***	***	***	0
Total	58	51	67	63	60	49	43	68	53	46	52	51	661	100

Table 6: ED assault attendances by discharge destination and month, January to December 2012

Discharge destination	Jan	Feb	Mar	Apr	May	Jun	Jul	Aug	Sep	Oct	Nov	Dec	Total	%
Discharged	26	23	38	28	25	27	16	35	25	14	33	25	315	48
Follow-up	29	23	23	25	26	16	15	21	17	24	15	15	249	38
Other	***	<6	<7	<10	***	***	<9	<11	<9	***	***	<10	70	11
Admitted	***	***	***	***	<6	***	***	***	***	***	***	***	27	4
Total	58	51	67	63	60	49	43	68	53	46	52	51	661	100

Published March 2013

Johnathan Rooney (TIIG Officer)

Centre for Public Health, Liverpool John Moores University, 2nd Floor, Henry Cotton Campus, Liverpool, L3 2ET

Tel: 0151 231 4539 Email: j.rooney@ljmu.ac.uk

Website: www.tiig.info (please note data requests should be made through the website)