

TIIG
INJURY SURVEILLANCE IN THE NORTH WEST OF ENGLAND

Chorley and South Ribble Hospital Emergency Department

Monthly Bulletin: October 2012 to September 2013

This bulletin provides a breakdown of all injury attendances to Chorley and South Ribble Hospital Emergency Department (ED) between October 2012 and September 2013.

During this twelve month period there were 23,525 attendances to Chorley and South Ribble Hospital ED. The month with the highest number of attendances was July 2013 with 2,419 attendances compared to 1,655 in February 2013 (**Figure 1**).

There were more male than female attendees presenting at Chorley and South Ribble Hospital ED with over half (54%) being male (males=12,814) (**Figure 1**).

Figure 2 illustrates the age group of ED attendances for each month. A third (33%) were aged 30-59 years (n=7,814) and almost a quarter (24%) were 15-29 years (n=5,668).

The injury group of attendances to the ED are detailed in **Table 1**. Over half (52%) of attendances were recorded as other injury (n=12,238), followed by three in ten (30%) of attendances accounting for injuries owing to falls (n=7,135). Nine per cent of attendances were due to sports injury (n=2,125), 6% road traffic collisions (n=1,377) and 3% assault (n=591).

Table 2 shows the location of incident for patients attending Chorley and South Ribble Hospital ED. The primary incident location was in the home where over a third (34%) of injuries occurred (n=8,096). Sixteen per cent of injuries were recorded as other location (n=3,827) and 15% in a public place (n=3,515).

The discharge destination for injury attendances is displayed in **Table 3**. It indicates almost two-thirds

(66%) of attendees were discharged with no follow-up treatment required (n=15,511). Thirteen per cent were referred to the fracture clinic (n=3,156) and 8% were discharged into the care of their General Practitioner (GP) (n=1,866).

Assault attendances

Between October 2012 and September 2013 there were 591 assault-related attendances to Chorley and South Ribble Hospital ED. The months with the largest number of presentations was June 2013 and August 2013, each month with 57 attendances (**Figure 3**).

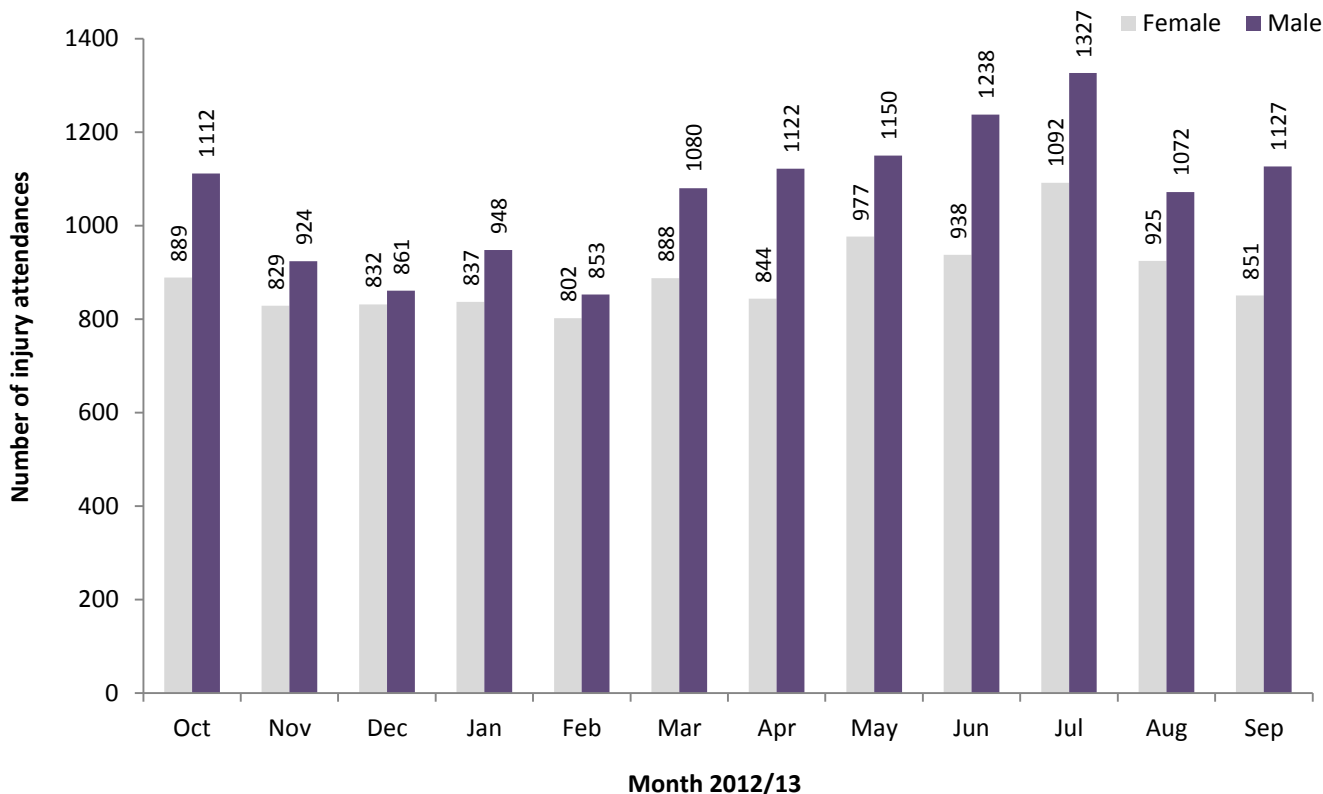
There were more male than female assault attendees with males accounting for almost seven in ten (69%) of attendances (males=405) (**Figure 3**).

Table 4 details the age group of assault attendances for each month. Almost half (49%) of the attendees were aged 15-29 years (n=288) followed by 43% aged 30-59 (n=257).

The incident location for assault attendances to Chorley and South Ribble Hospital ED is shown in **Table 5**. The primary incident locations for assault attendances were recorded as public place (n=166; 28%) and other location (n=156; 26%). These were followed by 16% in the home (n=95) and 13% in a public building (n=78).

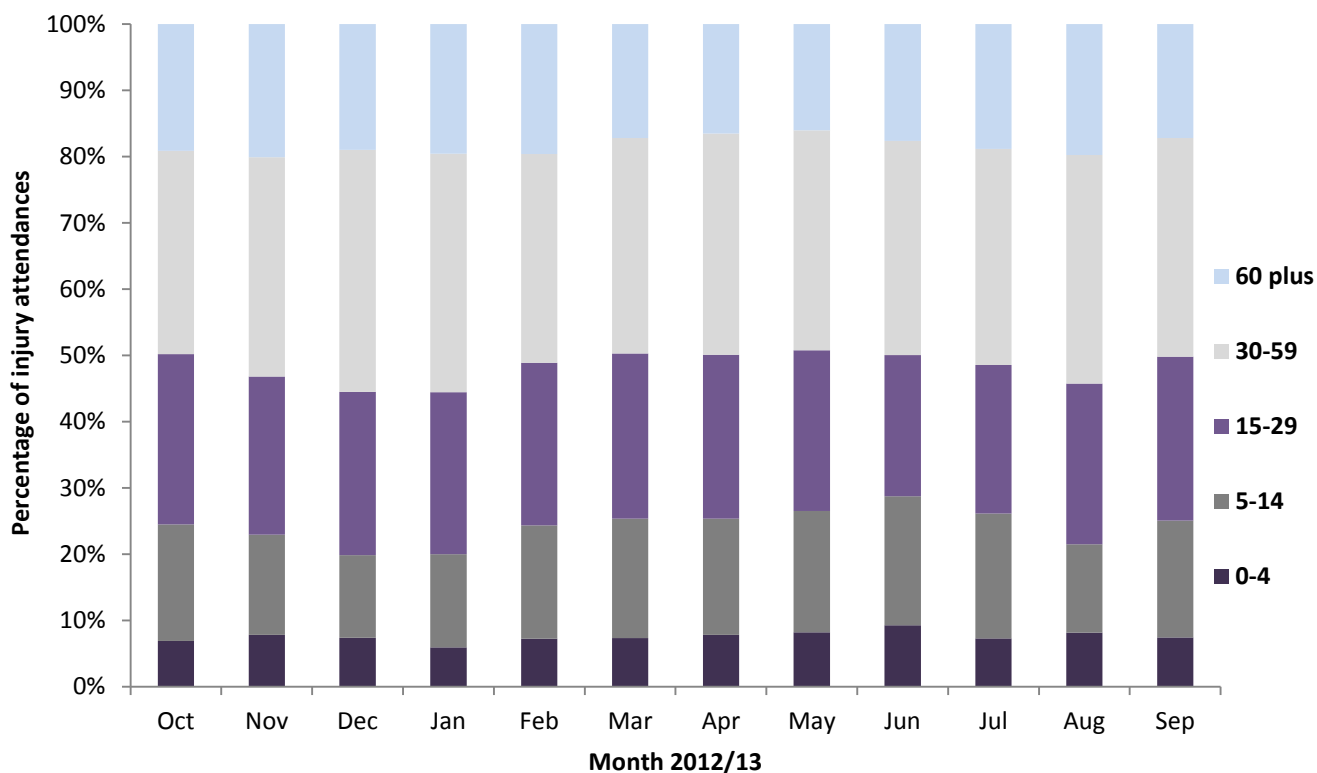
Table 6 illustrates the discharge destination for assault attendances. Over six in ten (61%) were discharged with no follow-up treatment required (n=359) with 28% requiring follow-up treatment (n=164). Four per cent of assault attendees were admitted into hospital (n=24).

Figure 1: Gender of ED injury attendances by month, October 2012 to September 2013*



* There were seven attendances where the gender was unknown.

Figure 2: Age group of ED injury attendances by month, October 2012 to September 2013*



* There were two attendances where the age was unknown.

Table 1: ED injury attendances by injury group and month, October 2012 to September 2013*¹

Injury group	Oct	Nov	Dec	Jan	Feb	Mar	Apr	May	Jun	Jul	Aug	Sep	Total	%
Other injury	967	835	807	876	891	1004	1041	1192	1129	1315	1085	1096	12238	52
Fall	640	580	623	623	474	565	544	564	652	737	602	531	7135	30
Sports injury	234	147	100	121	146	200	227	208	214	200	137	191	2125	9
Road traffic collision	109	138	111	106	98	153	92	116	120	108	110	116	1377	6
Assault	46	<55	<55	53	39	<45	55	<50	57	50	57	<45	591	3
Deliberate self-harm	6	***	***	6	7	***	7	***	5	9	8	***	59	0
Total	2002	1754	1693	1785	1655	1969	1966	2127	2177	2419	1999	1979	23525	100

* Due to low numbers, firework injuries have been included in the 'other injury' category (n=2).

Table 2: ED injury attendances by location of incident and month, October 2012 to September 2013^{1,2}

Location	Oct	Nov	Dec	Jan	Feb	Mar	Apr	May	Jun	Jul	Aug	Sep	Total	Total
Home	688	636	665	618	606	691	633	685	673	845	708	648	8096	34
Other	303	289	300	348	211	299	286	329	374	407	355	326	3827	16
Public place	250	224	231	272	253	300	311	332	335	369	323	315	3515	15
Work	214	210	163	201	178	177	194	216	199	197	200	207	2356	10
Sport	200	133	85	104	141	180	227	196	208	173	151	178	1976	8
Educational establishment	151	128	80	99	119	148	93	139	<120	111	***	104	1291	5
Home - other persons	47	43	77	59	55	68	68	78	82	103	65	61	806	3
Public building	54	37	55	27	31	33	34	26	27	27	40	24	415	2
Garden	26	8	9	7	8	15	38	42	59	80	43	29	364	2
Holiday	26	21	10	16	18	24	26	32	42	45	51	41	352	1
Public park/playground	17	14	5	9	14	11	35	28	29	34	30	19	245	1
Nursery	7	***	***	11	7	12	8	10	15	12	8	9	104	0
Special event	7	5	7	***	***	***	5	6	5	6	10	6	63	0
Hospital	***	***	0	***	9	***	***	***	5	***	9	***	48	0
Prison	6	***	***	5	0	***	***	***	5	***	***	5	42	0
Public transport	***	0	***	***	***	***	***	***	***	***	0	***	<25	0
Bus station	0	0	0	0	0	0	0	0	0	***	***	0	***	0
Total	2002	1754	1693	1785	1655	1969	1966	2127	2177	2419	1999	1979	23525	100

Table 3: ED injury attendances by discharge destination and month, October 2012 to September 2013³

Discharge destination	Oct	Nov	Dec	Jan	Feb	Mar	Apr	May	Jun	Jul	Aug	Sep	Total	%
Discharged - no follow-up	1080	1134	1060	1182	1087	1346	1322	1408	1472	1661	1386	1373	15511	66
Fracture clinic	251	214	244	234	215	230	271	294	313	376	248	266	3156	13
Discharged - follow-up by GP	366	168	157	124	136	161	144	157	142	90	111	110	1866	8
ED Clinic	64	48	34	45	37	46	46	59	52	63	50	46	590	3
Left before being treated	73	48	46	44	52	43	49	57	46	41	43	37	579	2
Admitted CDGH	40	42	33	41	35	46	35	33	28	43	38	44	458	2
Admitted RPH	28	32	42	33	25	29	35	38	53	45	44	36	440	2
Other healthcare professional	48	34	36	39	33	31	19	37	25	48	37	40	427	2
Outpatient clinic	43	30	28	37	30	34	40	37	41	44	40	21	425	2
Left having refused treatment	***	***	9	***	***	***	***	***	0	***	***	***	29	0
Transferred to other HCP	***	0	***	***	***	***	***	***	***	***	***	***	22	0
Police custody	***	***	***	0	***	***	***	***	0	***	0	***	16	0
Other	***	0	0	***	***	0	0	0	***	0	0	0	6	0
Total	2002	1754	1693	1785	1655	1969	1966	2127	2177	2419	1999	1979	23525	100

¹ Please note that all numbers less than five have been suppressed (with ***) in line with patient confidentiality. If there is only one number less than five in a category then two numbers will be suppressed to prevent back calculations from totals.

² Educational establishment includes: educational establishment; school; school - other; school playground; and, school sport. Public place includes: public place; and, playing out. Public building includes: public building; pub/club/bar - inside; and, pub/club/bar - outside.

³ Admitted to CDGH includes: admitted; admitted to Chorley and South Ribble Hospital (CDGH); and, admitted to Healey/Yarrow Ward. Admitted to RPH includes: admitted to Royal Preston Hospital (RPH); and, admitted to the Avondale Unit. Other includes: primary care; other; dead on arrival; and, died in department. HCP = Health care provider.

Assaults

Figure 3: Number of ED assault attendances by gender and month, October 2012 to September 2013

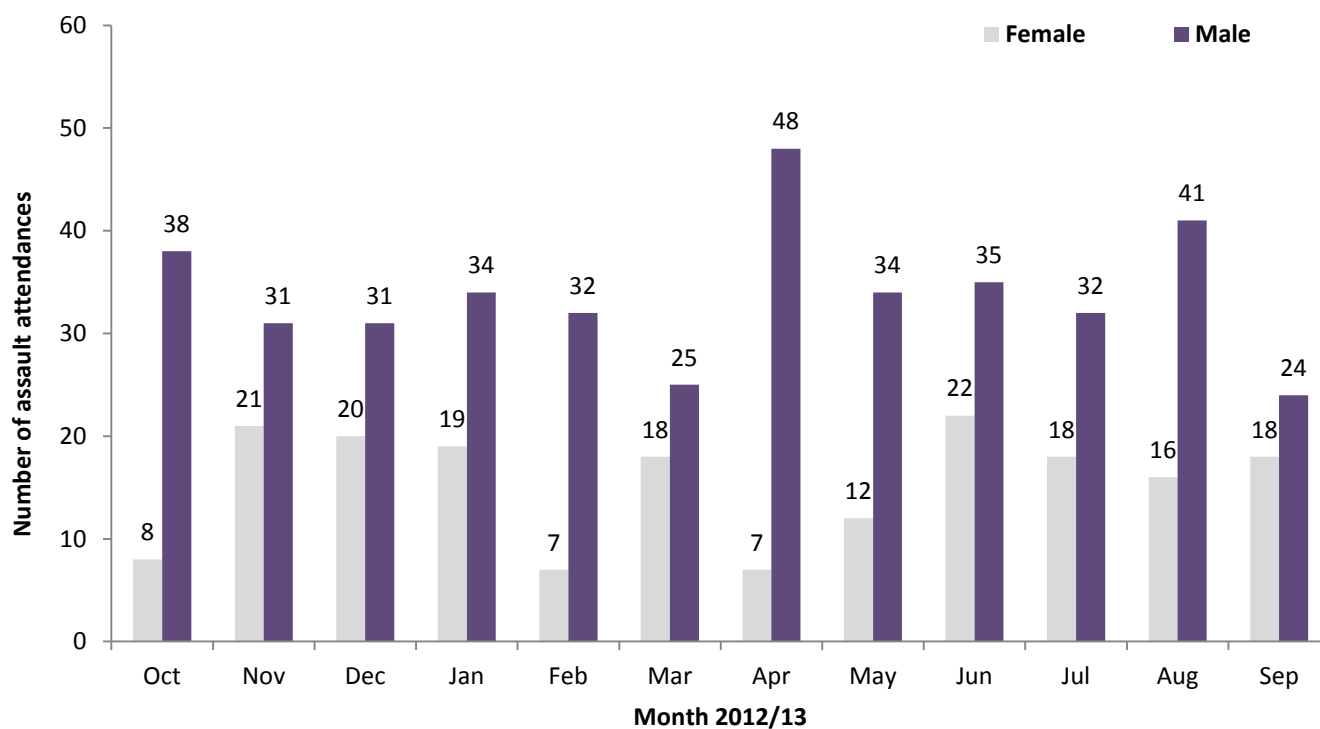


Table 4: ED assault attendances by age group and month, October 2012 to September 2013*⁴

Age group	Oct	Nov	Dec	Jan	Feb	Mar	Apr	May	Jun	Jul	Aug	Sep	Total	%
5-14	***	***	***	***	***	***	***	<10	<10	***	***	***	29	5
15-29	25	22	27	21	24	19	33	21	22	25	26	23	288	49
30-59	19	26	20	28	14	21	19	19	24	21	29	17	257	43
60 plus	***	***	***	***	***	***	***	***	***	***	***	***	15	3
Total	46	52	51	53	39	43	55	46	57	50	57	42	591	100

* There were two assault attendances in the 0-4 age group; these have been included in the total figure.

Table 5: ED assault attendances by incident location and month, October 2012 to September 2013^{4,5}

Location	Oct	Nov	Dec	Jan	Feb	Mar	Apr	May	Jun	Jul	Aug	Sep	Total	%
Public place	13	11	11	15	13	14	20	8	12	17	18	14	166	28
Other	14	8	15	19	8	7	17	11	20	11	17	9	156	26
Home	***	0	11	7	7	13	9	7	8	11	<10	8	95	16
Public building	9	10	8	6	7	6	5	7	***	***	11	***	78	13
Work	5	5	***	***	***	***	***	***	5	***	***	6	36	6
Home – other persons	***	5	5	***	***	***	***	***	***	***	***	***	30	5
Educational establishment	***	***	0	***	0	0	***	6	5	***	0	***	19	3
Public park/playground	0	0	0	0	0	0	0	***	***	***	0	***	***	1
Garden	0	0	0	0	0	0	0	***	0	0	0	***	***	0
Holiday	0	***	0	0	0	0	0	0	0	***	0	0	***	0
Prison	***	***	0	0	0	0	0	0	0	0	0	0	***	0
Special event	0	***	***	0	0	0	0	0	0	0	0	0	***	0
Total	46	52	51	53	39	43	55	46	57	50	57	42	591	100

⁴ Please note that all numbers less than five have been suppressed (with ***) in line with patient confidentiality. If there is only one number less than five in a category then two numbers will be suppressed to prevent back calculations from totals.

⁵ Educational establishment includes: educational establishment; school; school - other; school playground; and, school sport. Public place includes: public place; and, playing out. Public building includes: public building; pub/club/bar – inside; and, pub/club/bar – outside.

Table 6: ED assault attendances by discharge destination and month, October 2012 to September 2013⁶

Disposal	Oct	Nov	Dec	Jan	Feb	Mar	Apr	May	Jun	Jul	Aug	Sep	Total	%
Discharged	14	33	25	34	23	27	37	31	33	36	37	29	359	61
Follow-up	24	15	15	14	9	10	12	12	17	9	16	11	164	28
Other	***	***	<10	***	***	<10	***	***	***	***	***	***	44	7
Admitted	***	***	***	***	***	***	***	***	***	***	***	***	24	4
Total	46	52	51	53	39	43	55	46	57	50	57	42	591	100

Published October 2013

Karen A Critchley (née Swarbrick) – TIIG Researcher/Analyst

Centre for Public Health, Faculty of Education, Health and Community, Liverpool John Moores University,
2nd Floor, Henry Cotton Building, Liverpool L3 2ET

T: 0151 231 4498 | E: K.A.Swarbrick@ljmu.ac.uk | W: www.tiig.info and www.cph.org.uk

(Please note data requests should be made through the TIIG website)

⁶ Please note that all numbers less than five have been suppressed (with ***) in line with patient confidentiality. If there is only one number less than five in a category then two numbers will be suppressed to prevent back calculations from totals.