



TIIG
INJURY SURVEILLANCE IN THE NORTH WEST OF ENGLAND

CHORLEY AND SOUTH RIBBLE HOSPITAL EMERGENCY DEPARTMENT

MONTHLY BULLETIN: OCTOBER 2013 TO SEPTEMBER 2014

This bulletin provides a breakdown of all injury attendances to Chorley and South Ribble Hospital Emergency Department (ED) between October 2013 and September 2014.

In the twelve month period there were 22,746 injury attendances to Chorley and South Ribble Hospital ED. The month with the highest number of attendances, calculated as a daily average, was July 2014 (74 per day) compared to November 2013, the month with the fewest (51 per day; **Figure 1**).

There were more males than females attending the ED (males=12,144; 53%; **Figure 1**). One-third (33%) were aged between 30 and 59 years (n=7,586), while just under a quarter (24%) were aged between 15 and 29 years (n=5,429; **Figure 2**).

Table 1 shows the injury group of attendances between October 2013 and September 2014. Over half (54%) were categorised as 'other' injury (n=12,247) while falls (n=6,500) accounted for just under three in ten (29%) attendances. Just under one in ten (9%) injuries were sustained by sport (n=2,063), 6% were due to road traffic collisions (n=1,409) and 2% due to assault (n=487).

The primary incident location was the home (n=7,838; 34%; **Table 2**). Thirteen per cent of injuries occurred in a public place (n=2,932) and 11% occurred at work (n=2,477).

The discharge destination for ED attendances is displayed in **Table 3**. The majority (69%) of attendees were discharged from hospital with no follow-up treatment required (n=15,673) while 13% were referred to the fracture clinic (n=3,068).

Assault attendances

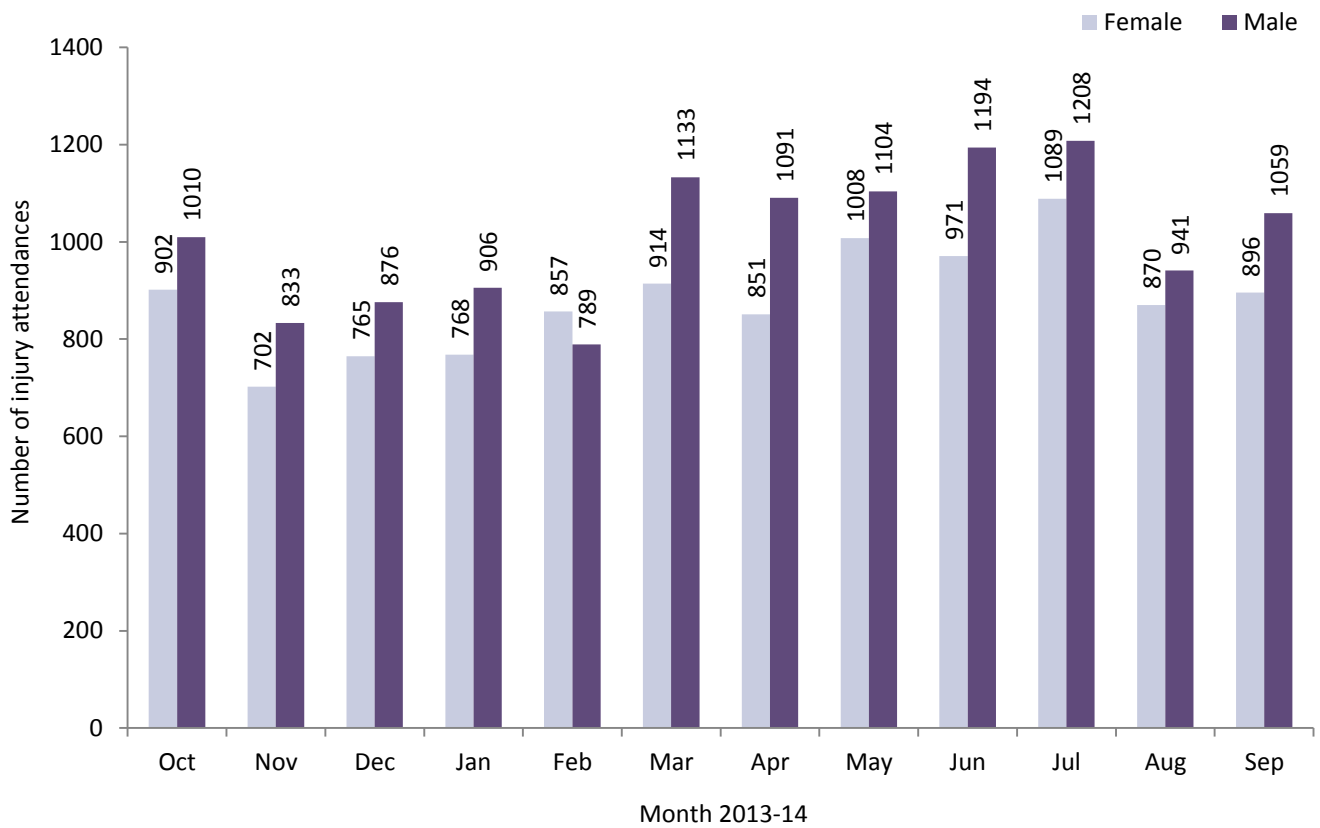
Between April 2013 and March 2014 there were 487 assault attendances to Chorley and South Ribble Hospital ED.

The majority (67%) of assault attendees were male (males=328; **Figure 3**), with exactly half (50%) aged between 15 and 29 years (n=244) followed by two in five (40%) aged between 30 and 59 years (n=197; **Table 4**).

The assault location is shown in **Table 5**. One-quarter (25%) of assaults occurred in a public place (n=122), while 14% occurred in the home (n=69) and 13% occurred in a public building (including pub/club/bar; n=65).

Table 6 illustrates the disposal method of assault attendances. Just over two-thirds (68%) were discharged from hospital with no follow-up treatment required (n=329) and just over one in five (21%) were referred for follow-up treatment (n=103).

Figure 1: ED injury attendances by gender and month, October 2013 to September 2014[^]



[^] There were 9 records where the gender was unknown; these have been omitted from the chart.

Figure 2: ED injury attendances by age group and month, October 2013 to September 2014

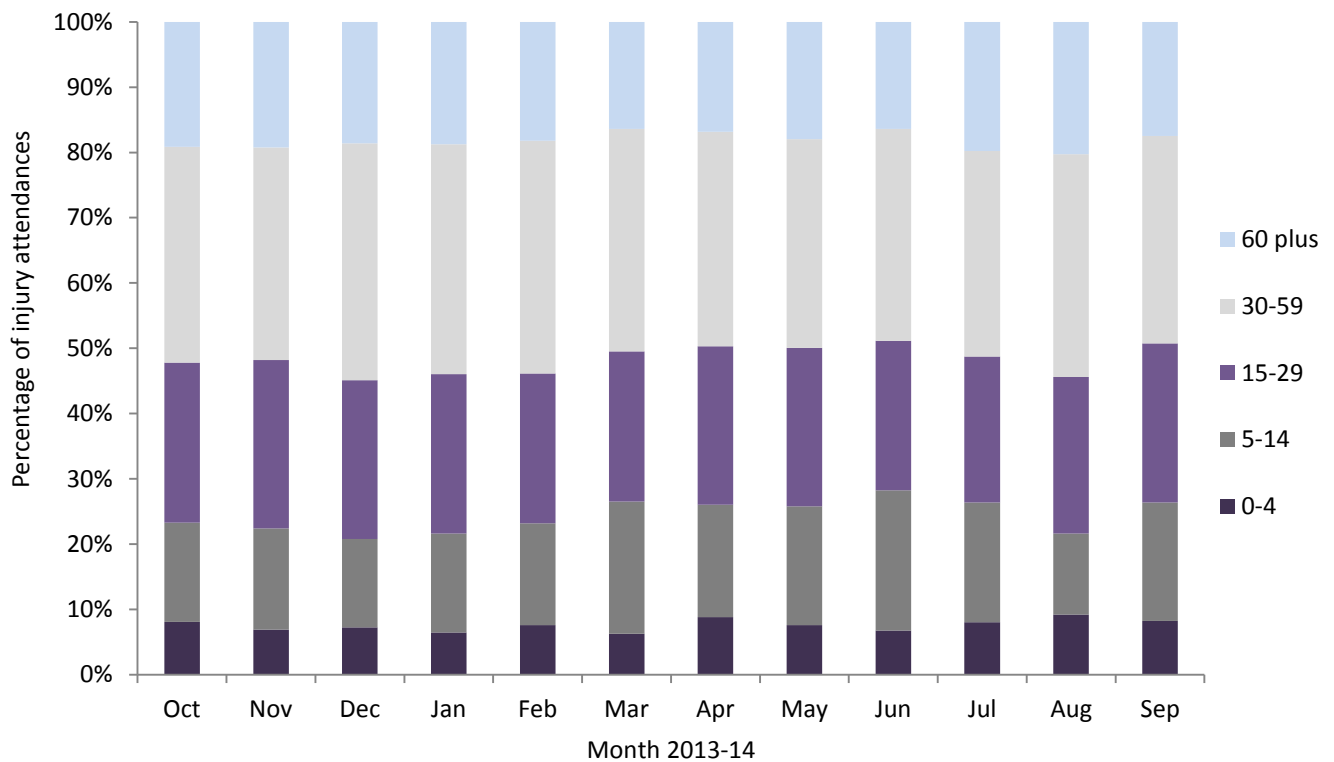


Table 1: ED injury attendances by injury group and month, October 2013 to September 2014^{†1}

Injury group	Oct	Nov	Dec	Jan	Feb	Mar	Apr	May	Jun	Jul	Aug	Sep	Total	%
Other injury	1021	789	841	867	838	1116	1010	1081	1292	1380	964	1048	12247	54%
Fall	552	452	551	483	503	548	563	667	511	589	561	520	6500	29%
Sports injury	170	148	105	153	146	210	198	172	213	166	142	240	2063	9%
Road traffic collision	119	116	<100	<130	<125	<145	<135	<140	<110	<120	99	<100	1409	6%
Assault	44	25	47	45	34	32	36	56	41	43	40	44	487	2%
Deliberate self-harm	7	5	***	***	***	***	***	***	***	***	7	***	40	0%
Total	1913	1535	1641	1677	1647	2047	1942	2112	2167	2297	1813	1955	22746	100%

[†] Due to low numbers, firework injuries (n=5) and major incident (n=17) have been included in the 'other' injury category

Table 2: ED injury attendances by incident location and month, October 2013 to September 2014^{1,2}

Incident location	Oct	Nov	Dec	Jan	Feb	Mar	Apr	May	Jun	Jul	Aug	Sep	Total	%
Home	656	597	677	600	590	638	632	764	655	782	668	579	7838	34%
Other	359	218	225	217	247	378	333	358	448	433	381	393	3990	18%
Public place	224	183	221	218	230	246	281	281	280	314	207	247	2932	13%
Work	228	173	180	224	196	235	198	224	222	217	175	205	2477	11%
Sport	159	133	98	141	156	215	185	170	220	171	160	220	2028	9%
Educational establishment	129	126	102	129	97	167	<95	97	149	128	***	123	1338	6%
Home - other person's	50	40	49	65	59	55	53	55	54	69	55	56	660	3%
Garden	18	<10	16	***	10	33	60	59	44	67	34	31	381	2%
Holiday	30	9	9	26	28	22	28	27	27	36	54	41	337	1%
Public building	31	26	38	30	18	23	31	27	16	28	35	23	326	1%
Public park/playground	12	***	6	5	6	12	25	26	<30	23	22	17	187	1%
Nursery	7	6	***	7	***	9	8	11	13	8	***	7	87	0%
Special event	***	8	10	***	***	6	8	***	7	9	10	8	80	0%
Hospital	***	***	***	***	***	***	5	***	***	7	***	***	34	0%
Prison	***	***	***	***	0	***	***	***	0	***	***	***	26	0%
Public transport	***	***	***	***	0	***	***	***	0	***	0	***	18	0%
Bus station	***	0	***	***	***	0	0	0	0	***	0	***	7	0%
Total	1913	1535	1641	1677	1647	2047	1942	2112	2167	2297	1813	1955	22746	100%

¹ Please note that all numbers less than five have been suppressed (with ***) in line with patient confidentiality. If there is only one number less than five in a category then two numbers have been suppressed to prevent back calculations from totals.

Percentages may not add up to 100% due to rounding.

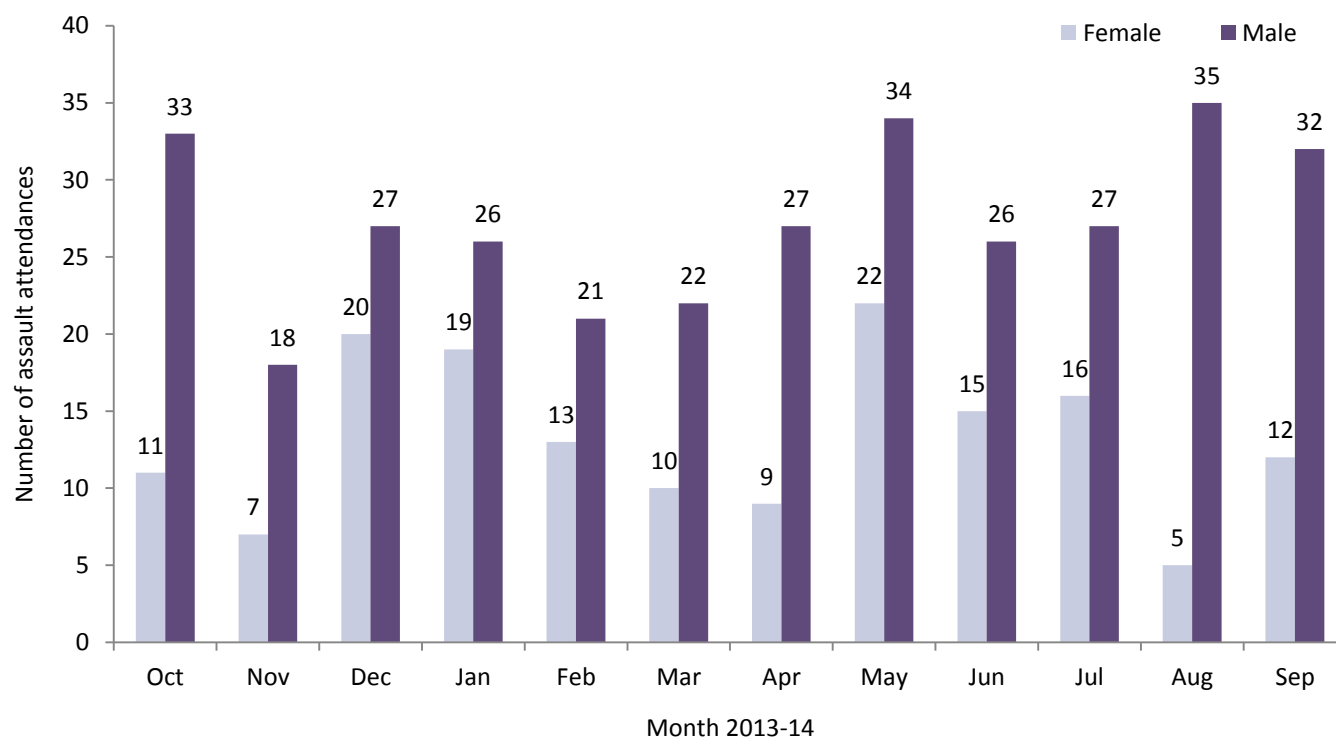
² 'Educational establishment' includes: educational establishment, school, school – other, school playground and school sport; 'Public place' includes: public place and playing out; 'Public building' includes: public building pub/club/bar - inside and pub/club/bar - outside.

Table 3: ED injury attendances by discharge destination and month, October 2013 to September 2014^{3,4}

Discharge destination	Oct	Nov	Dec	Jan	Feb	Mar	Apr	May	Jun	Jul	Aug	Sep	Total	%
Discharged - no follow-up	1307	1037	1070	1127	1163	1432	1357	1459	1551	1594	1220	1356	15673	69%
Referred to fracture clinic	261	227	214	230	218	251	243	289	296	323	245	271	3068	13%
Discharged - follow-up by GP	88	69	120	110	79	104	103	101	99	110	88	70	1141	5%
Referred to ED clinic	43	51	40	49	46	53	57	43	40	82	73	57	634	3%
Referred to other outpatient clinic	44	20	50	30	32	49	35	49	49	43	35	55	491	2%
Left before being treated	54	33	34	26	41	49	49	40	33	47	38	31	475	2%
Admitted to CDGH	55	40	42	34	23	31	25	39	30	40	37	31	427	2%
Admitted to RPH	23	23	27	34	18	32	35	51	33	35	31	39	381	2%
Referred to other healthcare professional	28	27	37	33	25	36	28	35	<40	<25	38	38	380	2%
Left having refused treatment	***	***	***	0	***	6	5	***	***	***	***	***	33	0%
Transferred to other HCP	***	***	***	0	***	***	***	***	0	***	***	***	21	0%
Police custody	6	***	***	***	0	***	0	0	0	0	***	0	17	0%
Other	0	***	0	***	0	0	***	***	0	0	***	0	5	0%
Total	1913	1535	1641	1677	1647	2047	1942	2112	2167	2297	1813	1955	22746	100%

ASSAULTS

Figure 3: ED assault attendances by gender and month, October 2013 to September 2014



³ 'Admitted to CDGH' includes: admitted, admitted to Chorley and South Ribble Hospital (CDGH) and admitted to Healey/Yarrow Ward; 'Admitted to RPH' includes: admitted to Royal Preston Hospital (RPH) and admitted to the Avondale Unit; 'Other' includes: primary care, other, dead on arrival and died in department.

GP = General Practitioner; HCP = Health care provider.

⁴ Please note that all numbers less than five have been suppressed (with ***) in line with patient confidentiality. If there is only one number less than five in a category then two numbers have been suppressed to prevent back calculations from totals.

Table 4: ED assault attendances by age group and month, October 2013 to September 2014⁵

Age group	Oct	Nov	Dec	Jan	Feb	Mar	Apr	May	Jun	Jul	Aug	Sep	Total	%
0-4	0	0	0	0	0	0	0	***	0	0	0	0	***	0%
5-14	***	***	***	***	***	***	***	<10	***	***	***	***	34	7%
15-29	22	16	25	27	14	14	18	30	13	17	23	25	244	50%
30-59	19	5	19	13	17	15	14	19	25	20	15	16	197	40%
60 plus	***	***	***	***	***	***	***	0	***	***	***	***	<15	2%
Total	44	25	47	45	34	32	36	56	41	43	40	44	487	100%

Table 5: ED assault attendances by incident location and month, October 2013 to September 2014^{5,6}

Incident location	Oct	Nov	Dec	Jan	Feb	Mar	Apr	May	Jun	Jul	Aug	Sep	Total	%
Public place	12	5	9	8	6	7	8	21	9	13	15	9	122	25%
Other	14	7	13	14	***	9	9	9	11	9	<10	14	120	25%
Home	***	***	7	***	8	***	5	8	12	***	5	6	69	14%
Public building	6	***	9	6	5	***	6	5	***	6	8	6	65	13%
Work	***	***	6	5	5	***	***	8	***	***	***	***	48	10%
Home - other person's	***	***	0	6	5	***	***	0	***	***	***	***	30	6%
Educational establishment	0	***	***	***	***	***	***	***	0	***	0	***	17	3%
Prison	0	***	0	0	0	0	***	***	0	0	0	***	***	1%
Public park/playground	0	0	0	0	0	***	***	***	0	***	0	0	***	1%
Garden	***	0	***	0	0	0	0	0	0	0	0	0	***	0%
Holiday	0	0	0	***	0	***	0	0	0	0	0	0	***	0%
Hospital	0	0	0	0	0	***	0	0	***	0	0	0	***	0%
Public transport	0	0	0	0	0	0	0	0	0	***	0	0	***	0%
Special event	0	0	0	0	0	***	0	0	0	0	0	0	***	0%
Total	44	25	47	45	34	32	36	56	41	43	40	44	487	100%

Table 6: ED assault attendances by disposal method and month, October 2013 to September 2014⁶

Disposal method	Oct	Nov	Dec	Jan	Feb	Mar	Apr	May	Jun	Jul	Aug	Sep	Total	%
Discharged	30	13	32	31	23	21	31	39	23	34	24	28	329	68%
Follow-up	<15	7	10	10	<10	6	***	11	14	6	8	8	103	21%
Other	***	***	***	***	***	***	***	***	***	***	<10	<10	38	8%
Admitted	0	***	***	***	0	***	0	***	***	***	***	***	17	3%
Total	44	25	47	45	34	32	36	56	41	43	40	44	487	100%

Published January 2015
 Trauma and Injury Intelligence Group
 Centre for Public Health, Faculty of Education, Health and Community, Liverpool John Moores University,
 2nd Floor, Henry Cotton Building, Liverpool L3 2ET
 T: 0151 231 4498 | E: tiig@ljmu.ac.uk | W: www.tiig.info and www.cph.org.uk | Twitter: [www.twitter.com/tiig_cph](https://twitter.com/tiig_cph)

⁵ Please note that all numbers less than five have been suppressed (with ***) in line with patient confidentiality. If there is only one number less than five in a category then two numbers have been suppressed to prevent back calculations from totals.

Percentages may not add up to 100% due to rounding.

⁶ 'Educational establishment' includes: educational establishment, school, school – other, school playground and school sport; 'Public place' includes: public place and playing out; 'Public building' includes: public building pub/club/bar - inside and pub/club/bar - outside.