

## Royal Lancaster Infirmary Emergency Department

### Monthly Bulletin: April 2008 to March 2009

This bulletin provides a breakdown of all injury attendances at Royal Lancaster Infirmary Emergency Department (ED) between April 2008 and March 2009.

Between April 2008 and March 2009 there were 16,053 injury attendances to Royal Lancaster Infirmary ED. The month with the highest attendance was July with 1,723 attendances (**Figure 1**). There were more male than female attendances presenting at Lancaster Royal Infirmary ED (males=9,133; 57%).

**Figure 2** illustrates age group of ED attendances for each month. The majority of ED attendances were aged 15-29 (n=4,966; 31%) and 30-59 (n=4,863; 30%).

The referral source of injury attendances to the Royal Lancaster Infirmary ED are shown in **Table 1**. Most ED attendances self-referred (63%), 17% had their referral method recorded as other and 15% were referred by emergency services.

**Table 2** details the injury group of ED attendances. For the majority (79%) of attendances, injury group was recorded as other injury. Sports injury accounted for 9% of attendances, 9% were road traffic collisions (RTC) and 3% were assaults.

**Table 3** shows the location of incident for injury attendances; over a third (35%) of incident locations

were recorded as other location. This was followed by home (26%) and in a public place (25%).

**Table 4** illustrates the discharge destination for patients attending Royal Lancaster Infirmary ED. Half (50%) of all attendances were discharged, 17% were discharged to the care of their GP and 15% referred to the fracture clinic, while under one in ten (8%) were admitted to hospital.

#### Assault attendances

Between April 2008 and March 2009 there were 488 assault attendances to Royal Lancaster Infirmary ED. The month with the highest attendance was July with 58 attendances (**Figure 3**). There were more male than female assault attendances presenting at Lancaster Royal Infirmary ED (males=354; 73%).

**Table 5** shows age group of assault attendances for each month. The majority of ED assault attendances were aged 15-29 (n=277; 57%) and 34% were 30-59 years old (n=167).

**Table 6** illustrates the location of incident for assault attendances to Royal Lancaster Infirmary ED. The primary incident location for ED assault attendances was other (52%), followed by public place (32%).

**Table 7** shows the discharge destination for assault attendees. Under half (42%) of assault attendances were discharged. Over a third (35%) required follow-up treatment, while 8% were admitted to hospital.

Figure 1: ED injury attendances by gender and month, April 2008 to March 2009

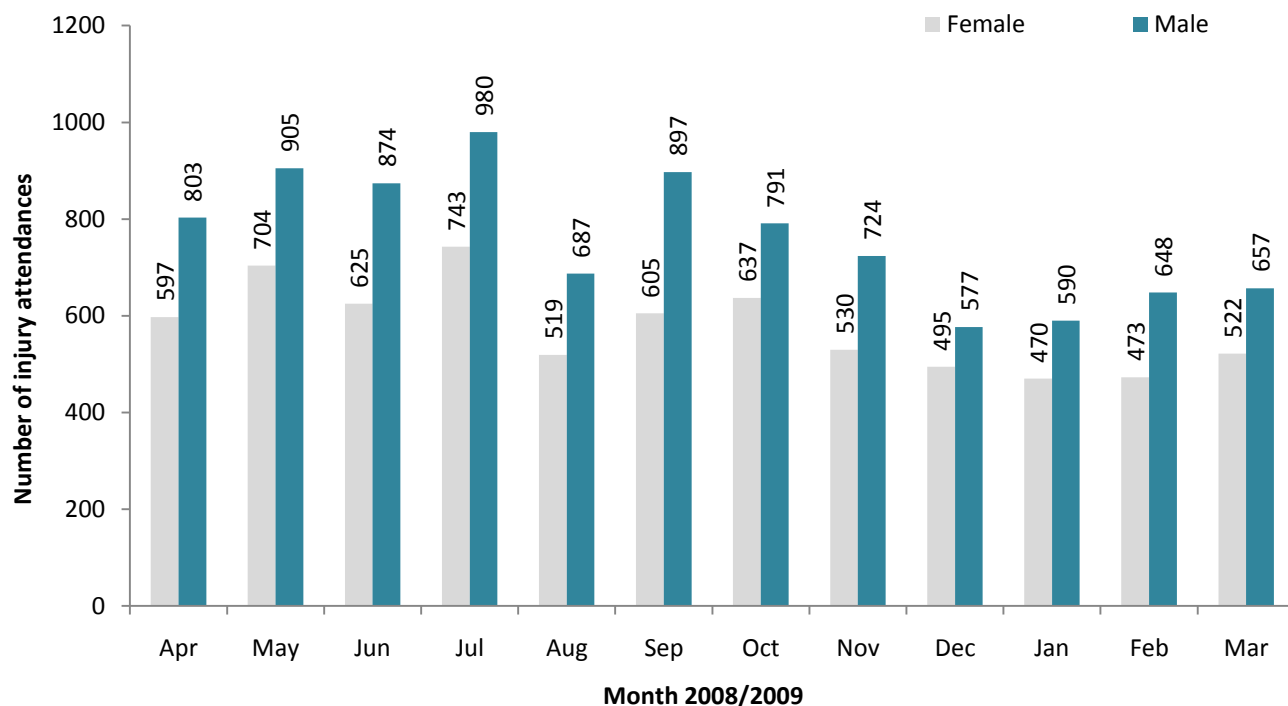


Figure 2: Age group of ED injury attendances by month, April 2008 to March 2009

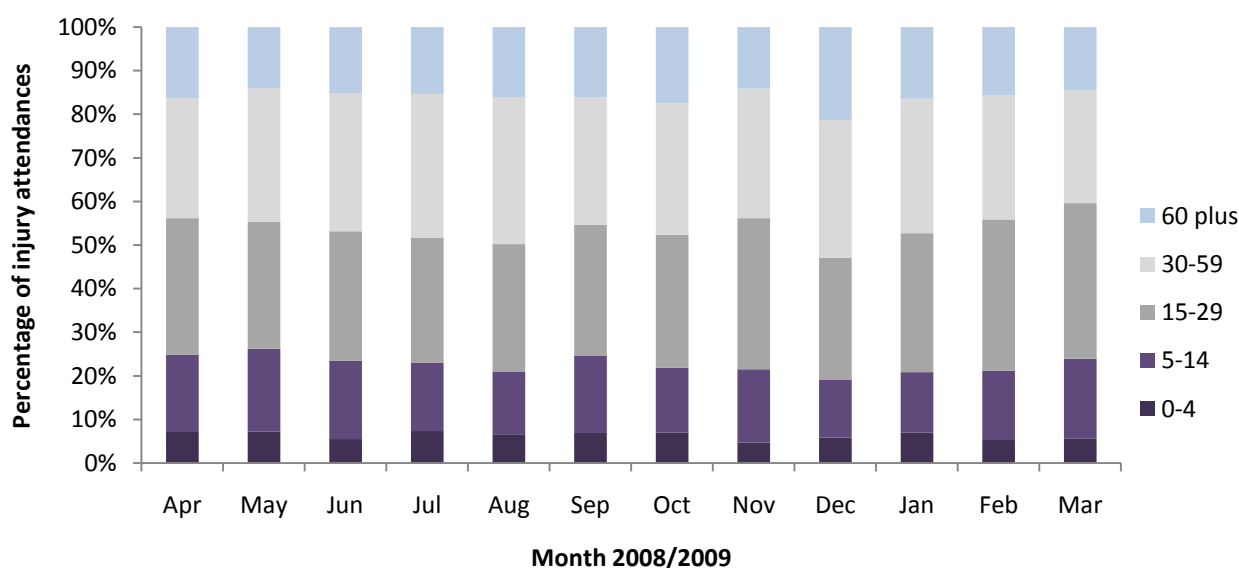


Table 1: ED injury attendances by source of referral and month, April 2008 to March 2009<sup>123</sup>

Source of referral	Apr	May	Jun	Jul	Aug	Sep	Oct	Nov	Dec	Jan	Feb	Mar	Total	%
Self referral	854	1036	1023	1090	769	962	916	823	668	623	651	652	10067	63
Other	284	285	235	317	173	244	210	182	140	198	232	269	2769	17
Emergency services	197	210	190	248	212	255	227	191	203	170	177	187	2467	15
Work	27	39	15	32	31	11	28	24	11	20	21	22	281	2
Educational establishment	15	16	14	12	***	9	20	12	23	18	21	26	186	1
GP	10	17	15	13	12	10	14	13	15	13	13	11	156	1
Police	13	6	6	10	9	11	11	9	12	18	6	12	123	1
Unknown	***	***	***	***	***	***	***	***	***	***	***	***	***	0
Health care provider: same or other	***	***	***	***	***	***	***	***	***	***	***	***	***	0
<b>Total</b>	<b>1400</b>	<b>1609</b>	<b>1499</b>	<b>1723</b>	<b>1206</b>	<b>1502</b>	<b>1428</b>	<b>1254</b>	<b>1072</b>	<b>1060</b>	<b>1121</b>	<b>1179</b>	<b>16053</b>	<b>100</b>

<sup>1</sup>Please note that all numbers less than five have been suppressed (with \*\*\*) in line with patient confidentiality and if there is only one number less than five in a category then two numbers will be suppressed to prevent back calculations from totals.

<sup>2</sup>Please note percentages might not add to one hundred due to rounding.

<sup>3</sup>GP=general practitioner.

**Table 2: ED injury attendances by injury group and month, April 2008 to March 2009**

Injury group	Apr	May	Jun	Jul	Aug	Sep	Oct	Nov	Dec	Jan	Feb	Mar	Total	%
Other injury	1149	1343	1241	1460	960	1162	1112	919	853	790	820	841	12650	79
RTC	121	110	113	134	119	145	114	136	105	101	99	104	1401	9
Sports injury	89	111	101	63	73	137	157	150	70	121	153	173	1398	9
Assault	31	37	34	58	43	50	38	40	35	36	40	46	488	3
Deliberate self-harm	10	8	10	8	11	8	7	9	9	12	9	15	116	1
<b>Total</b>	<b>1400</b>	<b>1609</b>	<b>1499</b>	<b>1723</b>	<b>1206</b>	<b>1502</b>	<b>1428</b>	<b>1254</b>	<b>1072</b>	<b>1060</b>	<b>1121</b>	<b>1179</b>	<b>16053</b>	<b>100</b>

**Table 3: ED injury attendances by incident location and month, April 2008 to March 2009**

Location	Apr	May	Jun	Jul	Aug	Sep	Oct	Nov	Dec	Jan	Feb	Mar	Total	%
Other	448	561	594	645	458	559	481	424	365	329	373	378	5615	35
Home	382	407	371	452	285	421	364	283	284	300	279	324	4152	26
Public place	381	424	304	403	361	319	356	357	299	290	302	294	4090	25
Workplace	134	131	148	161	99	120	119	103	62	82	86	78	1323	8
Educational establishment	55	86	82	62	***	83	108	87	62	59	81	105	873	5
Unknown	***	***	***	***	***	***	***	***	***	***	***	***	***	0
<b>Total</b>	<b>1400</b>	<b>1609</b>	<b>1499</b>	<b>1723</b>	<b>1206</b>	<b>1502</b>	<b>1428</b>	<b>1254</b>	<b>1072</b>	<b>1060</b>	<b>1121</b>	<b>1179</b>	<b>16053</b>	<b>100</b>

**Table 4: ED injury attendances by discharge destination and month, April 2008 to March 2009**

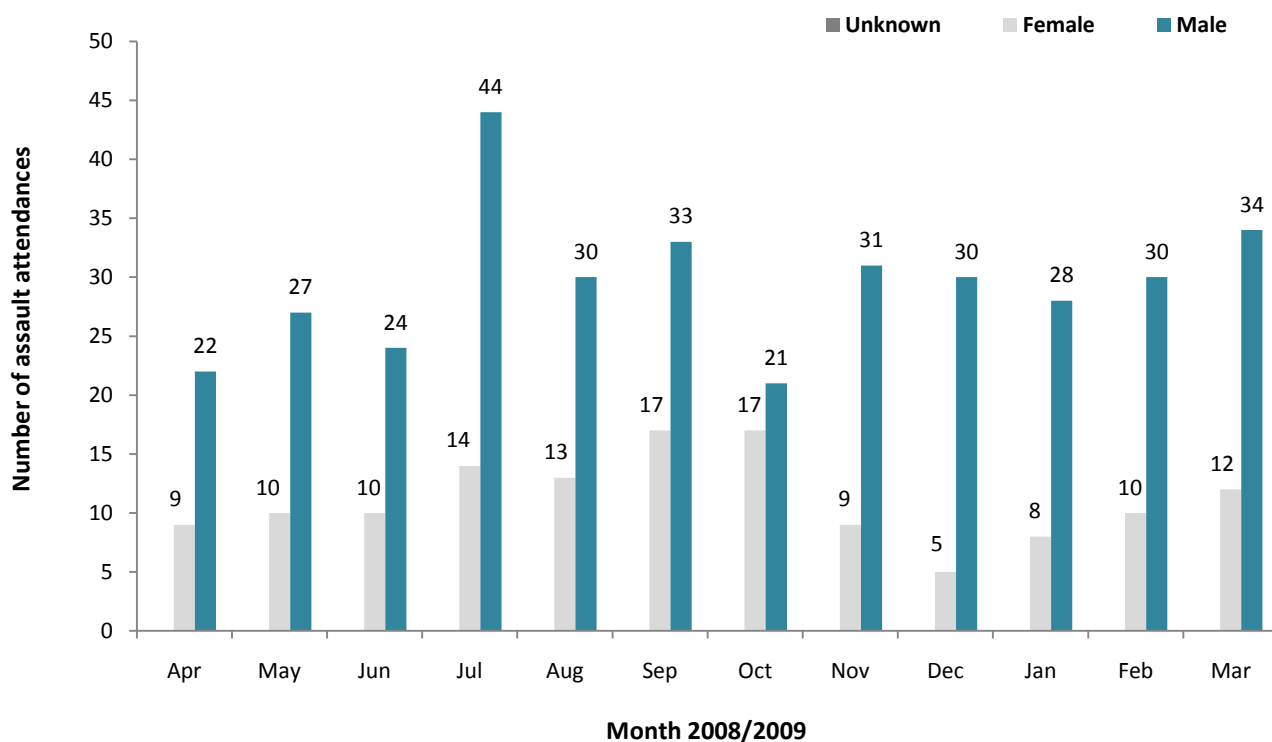
Discharge destination	Apr	May	Jun	Jul	Aug	Sep	Oct	Nov	Dec	Jan	Feb	Mar	Total	%
Discharged - no follow-up	684	818	729	868	531	721	717	641	588	580	599	630	8106	50
Discharge - follow up care by GP	271	239	290	338	218	271	253	201	125	158	169	182	2715	17
Fracture clinic	172	263	242	224	192	217	215	210	185	159	178	169	2426	15
Admitted	110	126	114	116	102	107	121	99	92	74	86	101	1248	8
Left - before being treated	67	47	25	55	59	73	32	25	29	14	31	29	486	3
Out-patient clinic	35	44	31	25	23	38	23	35	18	24	20	32	348	2
ED clinic	32	36	38	47	29	47	38	24	15	19	14	9	348	2
Other health care professional	12	19	17	31	27	19	14	13	12	14	16	13	207	1
Transferred to other health care provider	6	8	7	6	16	***	7	***	***	10	***	7	78	0
Left - refused treatment	6	***	***	7	***	***	***	***	***	***	***	6	49	0
Other	5	***	***	***	***	***	***	***	***	***	***	***	29	0
Died in department	***	***	***	***	***	***	***	***	***	***	***	***	8	0
Unknown	***	***	***	***	***	***	***	***	***	***	***	***	***	0
Restored to ward	***	***	***	***	***	***	***	***	***	***	***	***	***	0
<b>Total</b>	<b>1400</b>	<b>1609</b>	<b>1499</b>	<b>1723</b>	<b>1206</b>	<b>1502</b>	<b>1428</b>	<b>1254</b>	<b>1072</b>	<b>1060</b>	<b>1121</b>	<b>1179</b>	<b>16053</b>	<b>100</b>

## Assaults

**Table 5: ED assault attendances by age group and month, April 2008 to March 2009**

Age group	Apr	May	Jun	Jul	Aug	Sep	Oct	Nov	Dec	Jan	Feb	Mar	Total	%
Unknown	***	***	***	***	***	***	***	***	***	***	***	***	***	0
0-4	***	***	***	***	***	***	***	***	***	***	***	***	***	0
5-14	***	5	***	***	***	5	***	***	***	***	***	***	35	7
15-29	14	21	23	38	18	25	19	24	19	20	24	32	277	57
30-59	13	10	8	18	21	19	16	13	14	14	13	8	167	34
60 plus	***	***	***	***	***	***	***	***	***	***	***	***	7	1
<b>Total</b>	<b>31</b>	<b>37</b>	<b>34</b>	<b>58</b>	<b>43</b>	<b>50</b>	<b>38</b>	<b>40</b>	<b>35</b>	<b>36</b>	<b>40</b>	<b>46</b>	<b>488</b>	<b>100</b>

**Figure 3: Number of ED assault attendances by gender and month, April 2008 to March 2009**



**Table 6: ED assault attendances by incident location and month, April 2008 to March 2009**

Location	Apr	May	Jun	Jul	Aug	Sep	Oct	Nov	Dec	Jan	Feb	Mar	Total	%
Other	16	23	9	39	17	19	18	25	17	18	28	26	255	52
Public place	10	8	17	16	19	14	12	12	17	13	7	11	156	32
Home	***	***	5	***	5	11	5	***	***	***	***	9	53	11
Workplace	***	***	***	***	***	***	***	***	***	***	***	***	15	3
Educational establishment	***	***	***	***	***	***	***	***	***	***	***	***	9	2
<b>Total</b>	<b>31</b>	<b>37</b>	<b>34</b>	<b>58</b>	<b>43</b>	<b>50</b>	<b>38</b>	<b>40</b>	<b>35</b>	<b>36</b>	<b>40</b>	<b>46</b>	<b>488</b>	<b>100</b>

**Table 7: ED assault attendances by discharge destination and month, April 2008 to March 2009**

Disposal	Apr	May	Jun	Jul	Aug	Sep	Oct	Nov	Dec	Jan	Feb	Mar	Total	%
Discharged	10	17	13	23	16	19	19	22	9	17	25	16	206	42
Follow-up	12	10	16	21	16	17	16	13	15	10	5	21	172	35
Other	5	5	***	8	7	8	***	***	8	7	7	7	69	14
Admitted	***	5	***	6	***	6	***	***	***	***	***	***	41	8
<b>Total</b>	<b>31</b>	<b>37</b>	<b>34</b>	<b>58</b>	<b>43</b>	<b>50</b>	<b>38</b>	<b>40</b>	<b>35</b>	<b>36</b>	<b>40</b>	<b>46</b>	<b>488</b>	<b>100</b>

Published July 2010

Johnathan Rooney (Lancashire TIIG Officer)

Centre for Public Health, Liverpool John Moores University, 3rd Floor, Henry Cotton Campus, Liverpool, L3 2ET

Tel: 0151 231 4500 Email: [j.rooney@ljmu.ac.uk](mailto:j.rooney@ljmu.ac.uk)

Website: [www.tiig.info](http://www.tiig.info) (please note data requests should be made through the website)