



Monthly Bulletin: January to December 2009

This bulletin provides a breakdown of all injury attendances at Royal Lancaster Infirmary Emergency Department (ED) between January and December 2009.

Between January and December 2009 there were 14,958 injury attendances to Royal Lancaster Infirmary ED. The month with the highest attendance was July with 1,537 attendances (**Figure 1**). There were more male than female attendances presenting at Lancaster Royal Infirmary ED (males=8,349; 56%).

Figure 2 illustrates age group of ED attendances for each month. The majority of ED attendances were aged 15-29 (n=4,744; 32%) or 30-59 (n=4,429; 30%).

The referral source of injury attendances to the Royal Lancaster Infirmary ED are shown in **Table 1**. Most ED attendances self-referred (58%), 21% had their referral method recorded as other and 16% were referred by the emergency services.

Table 2 details the injury group of ED attendances. For the majority (77%) of attendances, injury group was recorded as other accident. Of those injury groups recorded, 11% were sports injury attendances, 8% were road traffic collisions (RTC) and 3% were assaults. **Table 3** shows the location of incident for injury attendances, nearly a third (32%) of incident locations were recorded as other. This

was followed by incidents in the home (28%) and in a public place (27%).

Table 4 illustrates the discharge destination for patients attending Royal Lancaster Infirmary ED. Over half (55%) of attendances were discharged, 14% were referred to the fracture clinic and 13% discharged in to the care of their GP, while almost one in ten (9%) were admitted to hospital.

Assault attendances

Between January and December 2009 there were 466 assault attendances to Royal Lancaster Infirmary ED. The month with the highest attendance was July with 49 attendances (**Figure 3**). There were more male than female assault attendances presenting at Lancaster Royal Infirmary ED (males=344; 74%).

Table 5 shows age group of assault attendances for each month. The majority of ED assault attendances were aged 15-29 (n=281; 60%) and 32% were 30-59 years old (n=151).

Table 6 illustrates the location of incident for assault attendances to Royal Lancaster Infirmary ED. The primary incident location for assault attendances was other (58%), followed by public place (26%).

Table 7 shows the discharge destination for assault attendees. More than half (52%) of assault attendances were discharged. Over a fifth (23%) required follow-up treatment, while nearly one in ten (8%) were admitted to hospital.

Figure 1: ED injury attendances by gender and month, January to December 2009

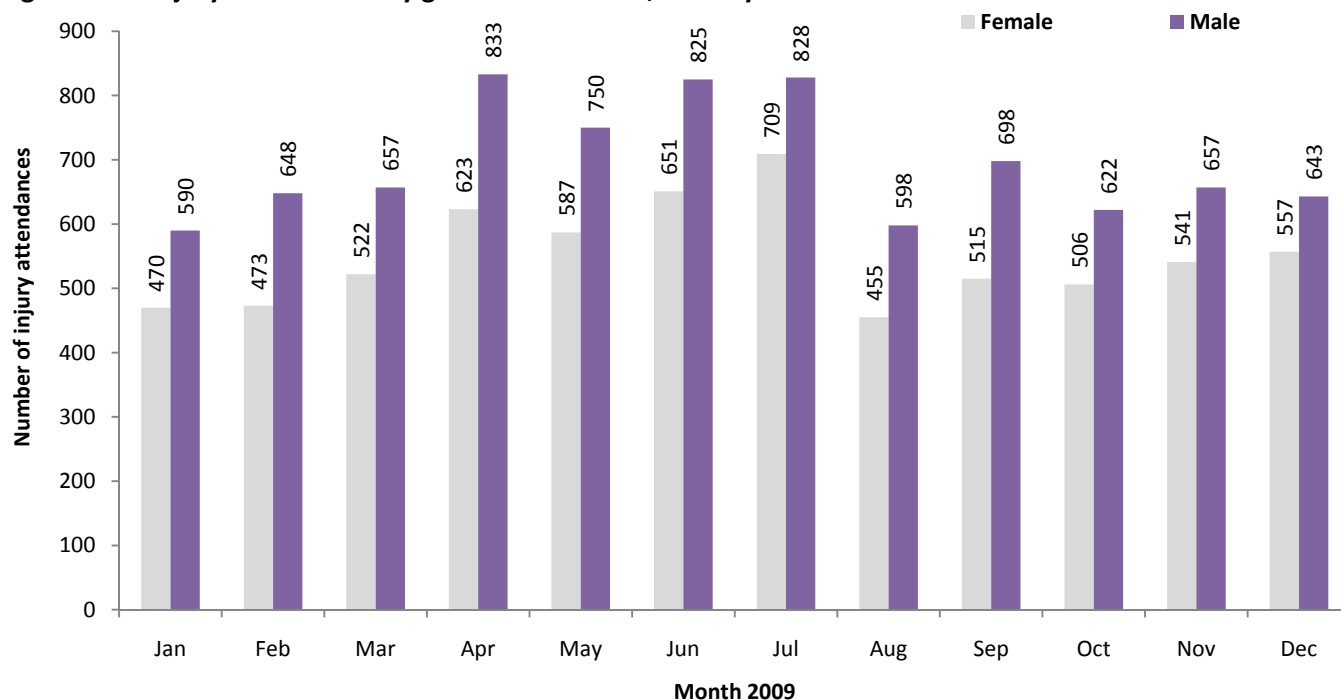


Figure 2: Age group of ED attendances by month, January to December 2009

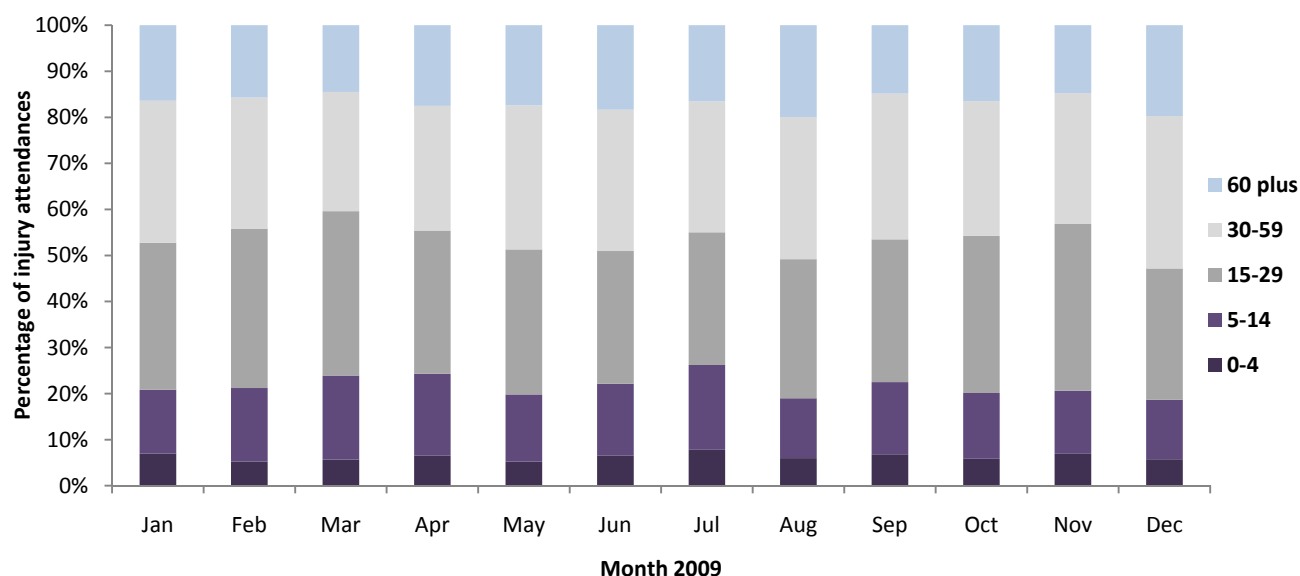


Table 1: ED injury attendances by source of referral and month, January to December 2009¹²³

Source of referral	Jan	Feb	Mar	Apr	May	Jun	Jul	Aug	Sep	Oct	Nov	Dec	Total	%
Self referral	623	651	652	800	790	840	864	604	699	628	712	746	8609	58
Other	198	232	269	384	253	343	374	206	269	246	208	214	3196	21
Emergency services	170	177	187	199	249	227	249	210	192	189	196	205	2450	16
Work	20	21	22	23	13	20	19	17	13	26	31	17	242	2
Educational establishment	18	21	26	18	***	17	5	***	16	22	31	9	186	1
GP	13	13	11	17	15	17	16	7	14	11	13	***	150	1
Police	18	6	12	13	13	12	10	7	9	6	7	***	117	1
Unknown	***	***	***	***	***	***	***	***	***	***	***	***	***	0
Health care provider: same or other	***	***	***	***	***	***	***	***	***	***	***	***	***	0
Total	1060	1121	1179	1456	1337	1476	1537	1053	1213	1128	1198	1200	14958	100

¹Please note that all numbers less than five have been suppressed (with ***) in line with patient confidentiality and if there is only one number less than five in a category then two numbers will be suppressed to prevent back calculations from totals.

²Please note percentages might not add to one hundred due to rounding

³GP – general practitioner

Table 2: ED injury attendances by injury group and month, January to December 2009

Injury group	Jan	Feb	Mar	Apr	May	Jun	Jul	Aug	Sep	Oct	Nov	Dec	Total	%
Other accident	790	820	841	1147	1006	1202	1228	834	881	854	906	948	11457	77
Sports injury	121	153	173	147	151	129	116	86	175	153	148	86	1638	11
RTC	101	99	104	108	106	105	128	83	108	80	112	115	1249	8
Assault	36	40	46	45	57	33	49	28	41	25	24	42	466	3
Deliberate self-harm	12	9	15	9	17	7	16	22	8	16	8	9	148	1
Total	1060	1121	1179	1456	1337	1476	1537	1053	1213	1128	1198	1200	14958	100

Table 3: ED injury attendances by incident location and month, January to December 2009

Location	Jan	Feb	Mar	Apr	May	Jun	Jul	Aug	Sep	Oct	Nov	Dec	Total	%
Other	329	373	378	498	493	449	501	342	413	340	357	369	4842	32
Home	300	279	324	442	353	433	427	293	342	313	330	354	4190	28
Public place	290	302	294	366	350	420	433	342	287	274	283	323	3964	27
Workplace	82	86	78	97	87	96	122	71	83	95	111	77	1085	7
Educational establishment	59	81	105	53	54	78	54	5	88	106	113	77	873	6
Unknown	0	0	0	0	0	0	0	0	0	0	4	0	4	0
Total	1060	1121	1179	1456	1337	1476	1537	1053	1213	1128	1198	1200	14958	100

Table 4: ED injury attendances by discharge destination and month, January to December 2009

Discharge destination	Jan	Feb	Mar	Apr	May	Jun	Jul	Aug	Sep	Oct	Nov	Dec	Total	%
Discharged - no follow-up	580	599	630	773	716	836	794	571	613	624	737	704	8177	55
Fracture clinic	159	178	169	214	174	194	189	130	160	163	183	191	2104	14
Discharge – follow-up GP	158	169	182	191	204	186	245	130	177	115	102	107	1966	13
Admitted	74	86	101	136	129	123	126	112	118	101	97	107	1310	9
Left - before being treated	14	31	29	54	40	57	95	46	71	67	27	29	560	4
Out-patient clinic	24	20	32	26	25	23	25	25	31	15	12	21	279	2
ED clinic	19	14	9	23	23	30	33	17	21	13	18	17	237	2
Other health care professional	14	16	13	21	20	12	20	13	10	17	13	19	188	1
Transferred to other health care provider	10	***	7	8	***	5	***	***	***	8	***	***	60	0
Left - refused treatment	***	***	6	5	***	8	***	***	6	***	***	***	49	0
Other	***	***	***	***	***	***	***	***	***	***	***	***	14	0
Unknown	***	***	***	***	***	***	***	***	***	***	***	***	9	0
Died in department	***	***	***	***	***	***	***	***	***	***	***	***	***	0
Restored to ward	***	***	***	***	***	***	***	***	***	***	***	***	***	0
Total	1060	1121	1179	1456	1337	1476	1537	1053	1213	1128	1198	1200	14958	100

Assaults

Table 5: ED assault attendances by age group and month, January to December 2009

Age	Jan	Feb	Mar	Apr	May	Jun	Jul	Aug	Sep	Oct	Nov	Dec	Total	%
Unknown	***	***	***	***	***	***	***	***	***	***	***	***	***	0
0-4	***	***	***	***	***	***	***	***	***	***	***	***	***	0
5-14	***	***	***	***	***	***	***	***	***	***	***	***	21	5
15-29	20	24	32	24	36	19	29	18	26	12	14	27	281	60
30-59	14	13	8	16	19	13	16	8	13	12	9	14	155	33
60 plus	***	***	***	***	***	***	***	***	***	***	***	***	8	2
Total	36	40	46	45	57	33	49	28	41	25	24	42	466	100

Figure 3: Number of ED assault attendances by gender and month, January to December 2009

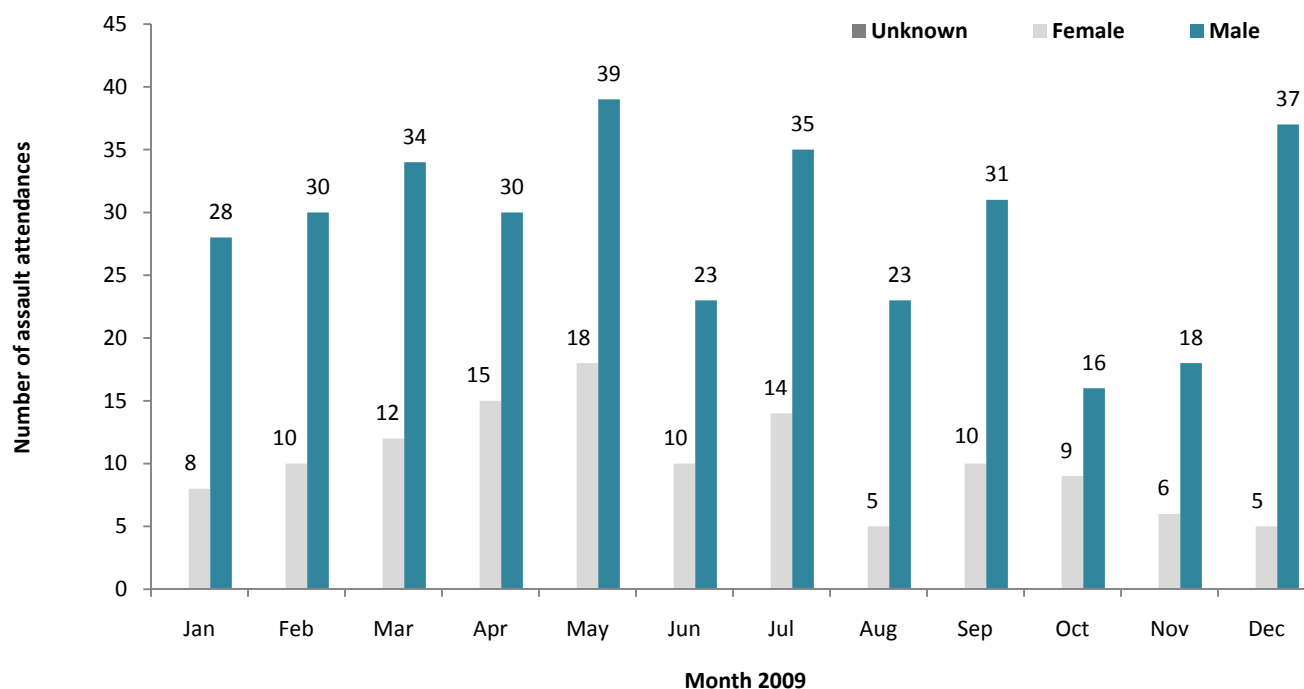


Table 6: ED assault attendances by incident location and month, January to December 2009

Location	Jan	Feb	Mar	Apr	May	Jun	Jul	Aug	Sep	Oct	Nov	Dec	Total	%
Other	18	28	26	25	38	15	27	14	28	17	11	25	272	58
Public place	13	7	11	9	10	13	13	12	11	***	8	9	120	26
Home	***	***	9	***	6	***	7	***	***	***	***	***	49	11
Workplace	***	***	***	6	***	***	***	***	***	***	***	***	21	5
Educational establishment	***	***	***	***	***	***	***	***	***	***	***	***	***	1
Total	36	40	46	45	57	33	49	28	41	25	24	42	466	100

Table 7: ED assault attendances by discharge destination and month, January to December 2009

Discharge destination	Jan	Feb	Mar	Apr	May	Jun	Jul	Aug	Sep	Oct	Nov	Dec	Total	%
Admitted	***	***	***	***	6	5	***	***	5	***	***	***	38	8
Discharged	17	25	16	27	32	14	23	16	18	14	14	28	244	52
Follow-up	10	***	21	10	14	9	***	7	9	***	***	6	106	23
Other	***	7	***	***	5	5	14	***	9	7	***	***	78	17
Total	36	40	46	45	57	33	49	28	41	25	24	42	466	100

Published April 2010

Dan Hungerford (North West TIIG Analyst)

Centre for Public Health, Liverpool John Moores University, 5th Floor, Kingsway House, Liverpool, L3 2AJ

Tel: 0151 231 8724 Email: d.j.hungerford@ljmu.ac.uk

Website: www.tiig.info (please note data requests should be made through the website)