

Royal Lancaster Infirmary Emergency Department

Monthly Bulletin: October 2010 to September 2011

This bulletin provides a breakdown of all injury attendances at Royal Lancaster Infirmary Emergency Department (ED) between October 2010 and September 2011.

Between October 2010 and September 2011 there were 16,269 injury attendances to Royal Lancaster Infirmary ED. The month with the highest attendance was May with 1,619 attendances (**Figure 1**). There were more male than female attendances presenting at Royal Lancaster Infirmary ED (males=9,166; 56%).

Figure 2 illustrates age group of ED attendances for each month. The majority of ED attendances were aged 15-29 (n=4,969; 31%) and 30-59 years (n=4,707; 29%).

The referral source of injury attendances to the Royal Lancaster Infirmary ED are shown in **Table 1**. Most ED attendances self-referred (56%), 24% had their referral method recorded as other and 15% were referred by the emergency services.

Table 2 details the injury group of ED attendances. For the majority (78%) of attendances, injury group was recorded as other injury. Sports injury accounted for 12% of attendances, 7% were road traffic collisions (RTC) and 3% were assaults.

Table 3 shows the location of incident for injury attendances, nearly a third (32%) of incident locations were recorded as other. This was followed by incidents in the home (31%) and in a public place (24%).

Table 4 illustrates the discharge destination for patients attending Royal Lancaster Infirmary ED. Almost six in ten (59%) of attendances were discharged, 15% were referred to the fracture clinic and 10% were admitted to hospital, while nearly one in ten (6%) were discharged in to the care of their GP.

Assault attendances

Between October 2010 and September 2011 there were 422 assault attendances to Royal Lancaster Infirmary ED. The month with the highest attendance was January with 45 attendances (**Figure 3**). There were more male than female assault attendances presenting at Royal Lancaster Infirmary ED (males=307; 73%).

Table 5 shows age group of assault attendances for each month. The majority of ED assault attendances were aged 15-29 years (n=239; 57%) and 35% were 30-59 (n=147).

Table 6 illustrates the location of incident for assault attendances to Royal Lancaster Infirmary ED. The primary incident location for assault attendances was other (49%), followed by public place (28%).

Table 7 shows the discharge destination for assault attendees. Over six in ten (61%) of assault attendances were discharged. Nearly a fifth (15%) required follow-up treatment, while almost one in ten (9%) were admitted to hospital.

Figure 1: ED injury attendances by gender and month, October 2010 to September 2011

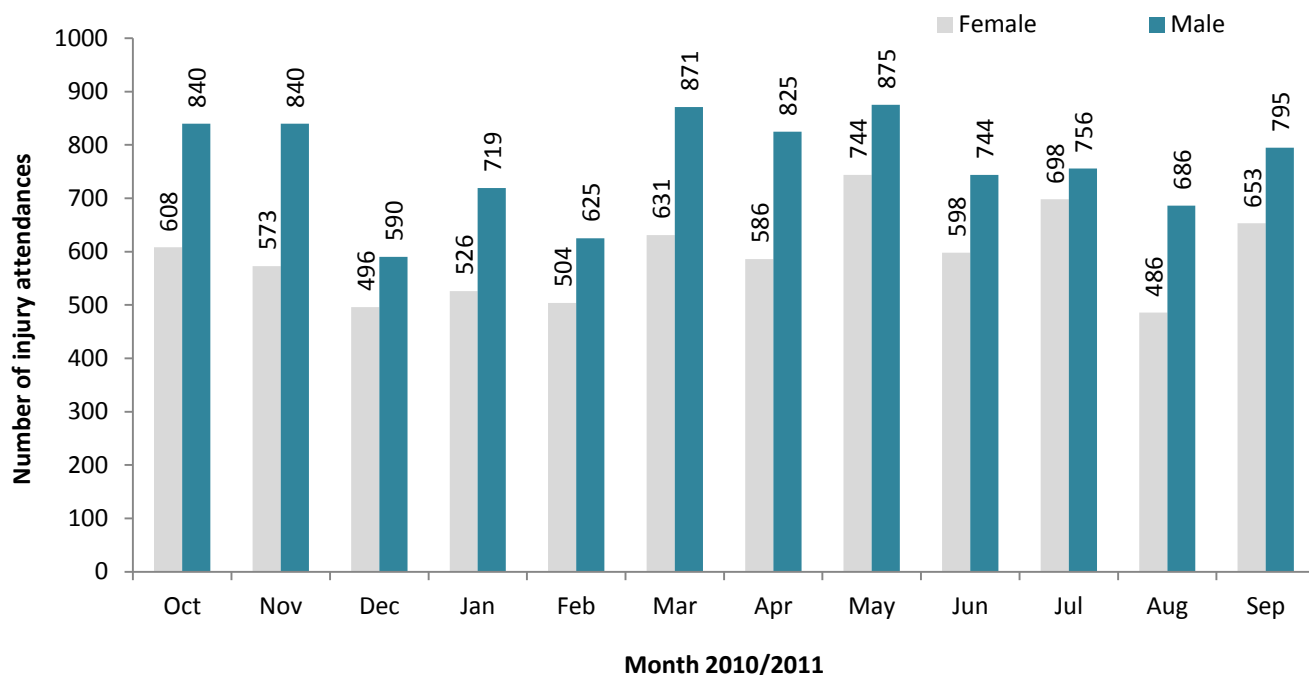


Figure 2: Age group of ED injury attendances by month, October 2010 to September 2011

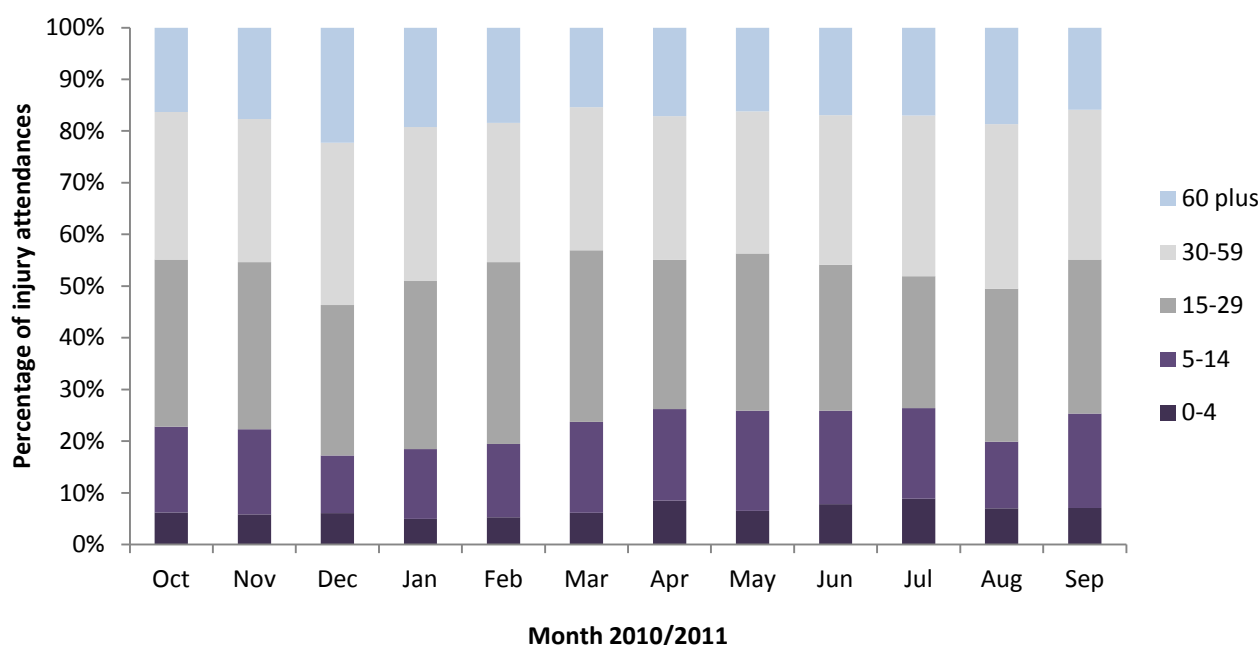


Table 1: ED injury attendances by source of referral and month, October 2010 to September 2011¹²³

Source of referral	Oct	Nov	Dec	Jan	Feb	Mar	Apr	May	Jun	Jul	Aug	Sep	Total	%
Self-referral	871	822	620	733	669	889	758	917	711	766	671	756	9183	56
Other	300	294	212	237	229	360	416	430	381	428	286	390	3963	24
Emergency services	224	238	209	208	180	211	200	206	199	200	178	221	2474	15
Work	10	20	17	31	16	9	15	20	18	26	19	23	224	1
Educational establishment	19	22	13	26	19	<11	10	28	15	14	***	33	209	1
GP	16	11	6	<6	10	13	***	10	12	9	12	22	130	1
Police	<9	<7	<10	<6	<7	<10	<6	<9	<6	<12	<6	***	80	0
Health care provider: same or other	***	***	***	***	***	***	***	***	***	***	***	***	6	0
Total	1448	1413	1086	1245	1129	1502	1411	1619	1342	1454	1172	1448	16269	100

¹Please note that all numbers less than five have been suppressed (with ***) in line with patient confidentiality and if there is only one number less than five in a category then two numbers will be suppressed to prevent back calculations from totals.

² GP=general practitioner.

³ Please note percentages might not add to one hundred due to rounding.

Table 2: ED injury attendances by injury group and month, October 2010 to September 2011

Injury group	Oct	Nov	Dec	Jan	Feb	Mar	Apr	May	Jun	Jul	Aug	Sep	Total	%
Other injury	1078	1042	876	945	848	1079	1110	1342	1072	1195	922	1140	12649	78
Sports injury	206	197	76	160	194	255	153	132	139	109	119	149	1889	12
RTC	110	121	84	92	62	111	97	109	95	85	78	124	1168	7
Assault	37	44	40	<46	<22	38	32	31	29	42	40	23	422	3
Deliberate self-harm	17	9	10	***	***	19	19	5	7	23	13	12	141	1
Total	1448	1413	1086	1245	1129	1502	1411	1619	1342	1454	1172	1448	16269	100

Table 3: ED injury attendances by incident location and month, October 2010 to September 2011*

Location	Oct	Nov	Dec	Jan	Feb	Mar	Apr	May	Jun	Jul	Aug	Sep	Total	%
Other	462	494	352	319	298	511	502	539	472	476	379	457	5261	32
Home	443	412	336	408	378	433	446	501	398	465	349	415	4984	31
Public place	330	309	284	318	291	323	339	370	308	328	348	360	3908	24
Workplace	108	92	75	96	77	107	84	113	98	120	91	106	1167	7
Educational establishment	105	106	39	104	85	128	40	96	66	65	5	109	948	6
Total	1448	1413	1086	1245	1129	1502	1411	1619	1342	1454	1172	1448	16269	100

*There was one attendance where location was unknown.

Table 4: ED injury attendances by discharge destination and month, October 2010 to September 2011

Discharge destination	Oct	Nov	Dec	Jan	Feb	Mar	Apr	May	Jun	Jul	Aug	Sep	Total	%
Discharged - no follow-up	878	832	618	757	711	916	822	976	804	836	645	834	9629	59
Fracture clinic	188	223	167	167	164	241	227	277	207	225	174	234	2494	15
Admitted	141	146	139	131	106	135	152	128	107	131	106	127	1549	10
Discharge – follow-up care by GP	97	85	56	78	57	64	67	90	97	102	109	108	1010	6
Left - before being treated	75	69	56	55	32	67	69	73	48	80	65	67	756	5
Out-patient clinic	18	26	19	24	23	32	24	24	27	25	22	31	295	2
ED clinic	16	8	12	15	19	14	16	18	20	18	19	18	193	1
Other health care professional	17	11	10	9	9	17	16	20	17	19	15	15	175	1
Transferred to other health care provider	8	5	5	***	***	7	7	***	6	10	8	***	66	0
Left - refused treatment	6	6	***	5	***	***	6	***	***	6	***	7	53	0
Other	***	***	***	***	***	***	***	6	***	***	***	***	30	0
Died in department	***	***	***	***	***	***	***	***	***	***	***	***	<16	0
Unknown	***	***	***	***	***	***	***	***	***	***	***	***	***	0
Total	1448	1413	1086	1245	1129	1502	1411	1619	1342	1454	1172	1448	16269	100

Assaults

Table 5: ED assault attendances by age group and month, October 2010 to September 2011

Age group	Oct	Nov	Dec	Jan	Feb	Mar	Apr	May	Jun	Jul	Aug	Sep	Total	%
0-4	***	***	***	***	***	***	***	***	***	***	***	***	***	1
5-14	***	***	***	5	***	***	***	***	***	***	***	***	<22	5
15-29	25	26	23	29	15	26	18	18	18	17	17	7	239	57
30-59	11	17	15	10	5	7	11	10	8	20	20	13	147	35
60 plus	***	***	***	***	***	***	***	***	***	***	***	***	11	3
Total	37	44	40	45	<22	38	32	31	29	42	40	<24	422	100

Figure 3: Number of ED assault attendances by gender and month, October 2010 to September 2011

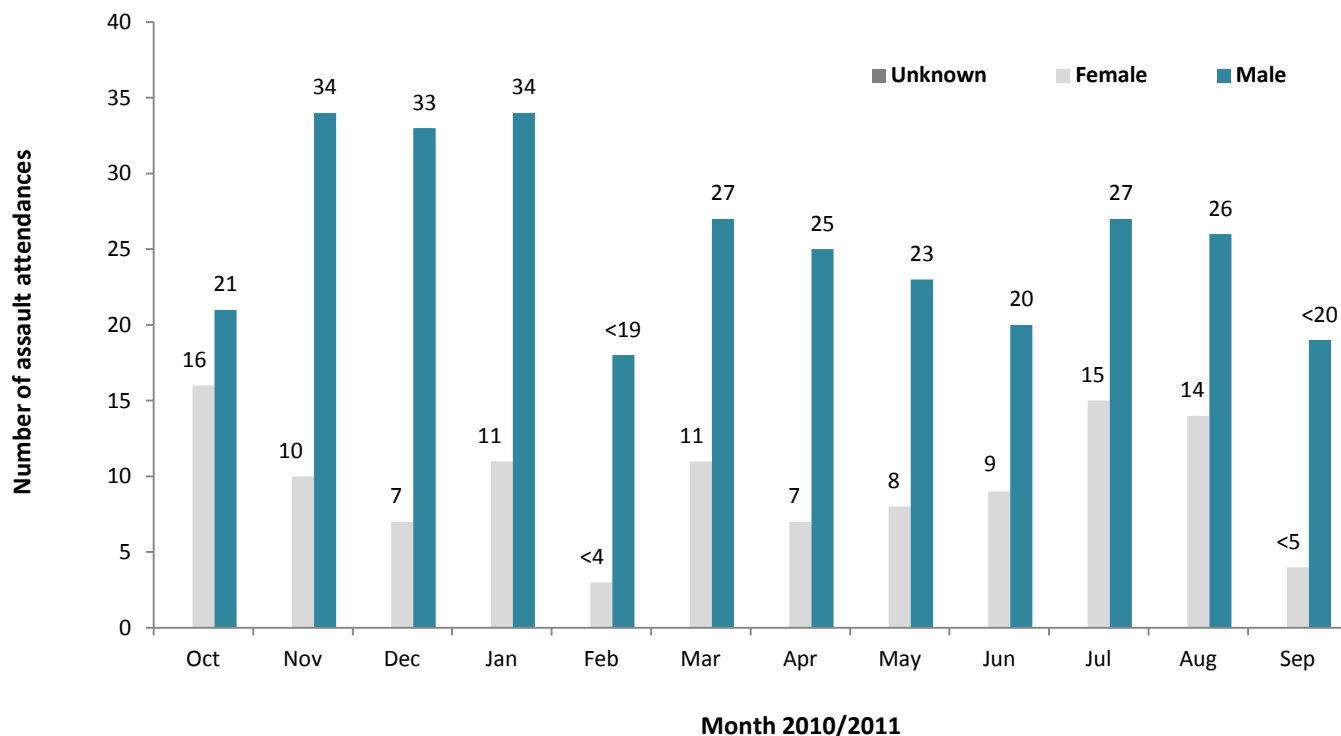


Table 6: ED assault attendances by incident location and month, October 2010 to September 2011

Location	Oct	Nov	Dec	Jan	Feb	Mar	Apr	May	Jun	Jul	Aug	Sep	Total	%
Other	19	17	21	23	8	19	13	19	19	23	14	12	207	49
Public place	12	18	10	15	***	8	12	***	5	9	16	5	118	28
Home	5	8	6	***	7	10	7	6	***	5	9	6	75	18
Workplace	***	***	***	***	***	***	***	***	***	<6	***	***	15	4
Educational establishment	***	***	***	***	***	***	***	***	***	***	***	***	7	2
Total	37	44	40	45	21	38	32	31	29	42	40	23	422	100

Table 7: ED assault attendances by discharge destination and month, October 2010 to September 2011

Disposal	Oct	Nov	Dec	Jan	Feb	Mar	Apr	May	Jun	Jul	Aug	Sep	Total	%
Discharged	23	28	21	30	11	27	15	18	22	24	23	14	256	61
Follow-up	9	8	<8	7	***	***	***	5	***	<8	<8	***	64	15
Other	***	<6	8	<6	5	***	7	<6	***	8	8	***	63	15
Admitted	***	***	***	***	***	***	<7	***	***	***	***	***	39	9
Total	37	44	40	45	21	38	32	31	29	42	40	23	422	100

Published December 2011

Johnathan Rooney (TIIG Officer)

Centre for Public Health, Liverpool John Moores University, 2nd Floor, Henry Cotton Campus, Liverpool, L3 2ET

Tel: 0151 231 4513 Email: j.rooney@ljmu.ac.uk

Website: www.tiig.info (please note data requests should be made through the website)