

Royal Lancaster Infirmary Emergency Department

Monthly Bulletin: April 2011 to March 2012

This bulletin provides a breakdown of all injury attendances at Royal Lancaster Infirmary Emergency Department (ED) between April 2011 and March 2012.

Between April 2011 and March 2012 there were 15,622 injury attendances to Royal Lancaster Infirmary ED. The month with the highest attendance was May with 1,619 attendances (**Figure 1**). There were more male than female attendances presenting at Royal Lancaster Infirmary ED (males=8,653; 55%).

Figure 2 illustrates age group of ED attendances for each month. The majority of ED attendances were aged 15-29 (n=4,822; 31%) and 30-59 years (n=4,521; 29%).

The referral source of injury attendances to the Royal Lancaster Infirmary ED are shown in **Table 1**. Most ED attendances self-referred (56%), 27% had their referral method recorded as other and 13% were referred by the emergency services.

Table 2 details the injury group of ED attendances. For the majority (78%) of attendances, injury group was recorded as other injury. Sports injury accounted for 12% of attendances, 7% were road traffic collisions (RTC) and 2% were assaults.

Table 3 shows the location of incident for injury attendances; over three in ten (31%) incident locations were recorded in the home. This was

followed by public place (28%) and other location (28%).

Table 4 illustrates the discharge destination for patients attending Royal Lancaster Infirmary ED. Almost six in ten (57%) of attendances were discharged, 16% were referred to the fracture clinic and 9% were admitted to hospital; while nearly one in ten (8%) were discharged into the care of their GP.

Assault attendances

Between April 2011 and March 2012 there were 381 assault attendances to Royal Lancaster Infirmary ED. The month with the highest attendance was October with 48 attendances (**Figure 3**). There were more male than female assault attendances presenting at Royal Lancaster Infirmary ED (males=285; 75%).

Table 5 shows age group of assault attendances for each month. The majority of ED assault attendances were aged 15-29 years (n=206; 54%) and 38% were aged 30-59 years (n=145).

Table 6 illustrates the location of incident for assault attendances to Royal Lancaster Infirmary ED. The primary incident location for assault attendances was other (39%), followed by public place (38%).

Table 7 shows the discharge destination for assault attendees. Over half (53%) of assault attendances were discharged. Over a fifth (21%) required follow-up treatment, while one in ten (10%) were admitted to hospital.

Figure 1: ED injury attendances by gender and month, April 2011 to March 2012

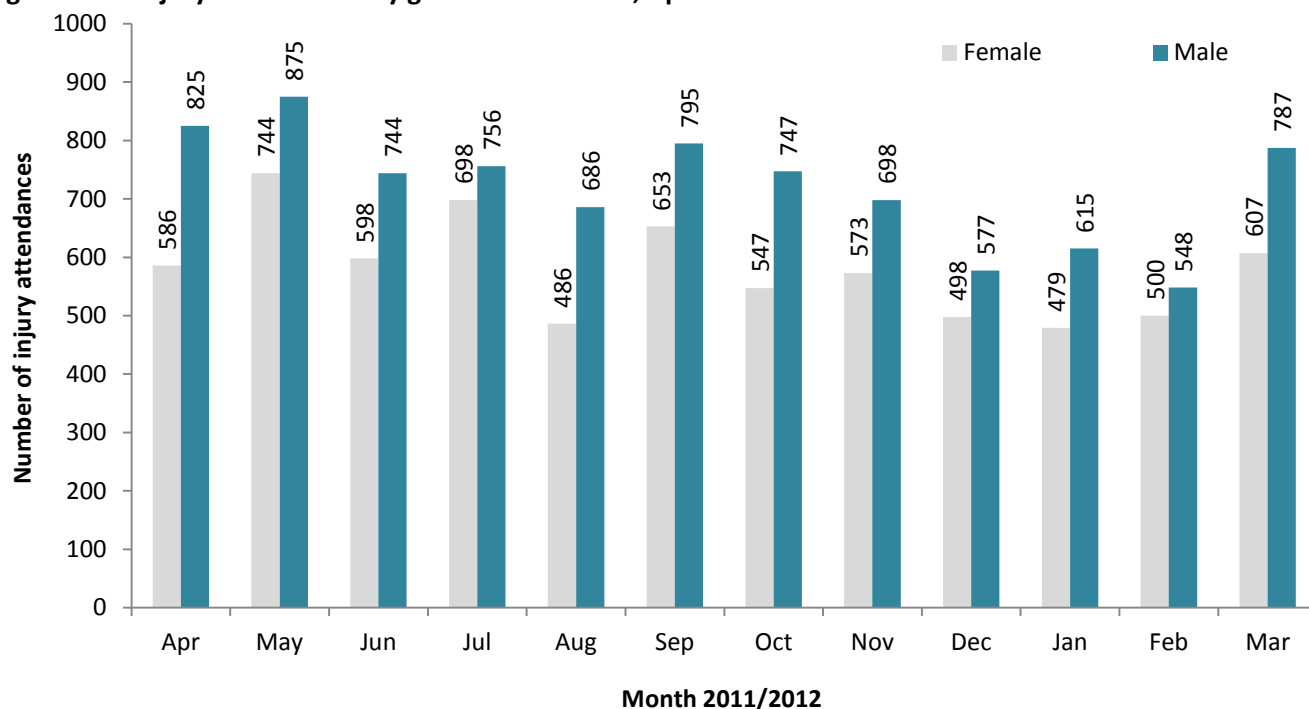


Figure 2: Age group of ED injury attendances by month, April 2011 to March 2012

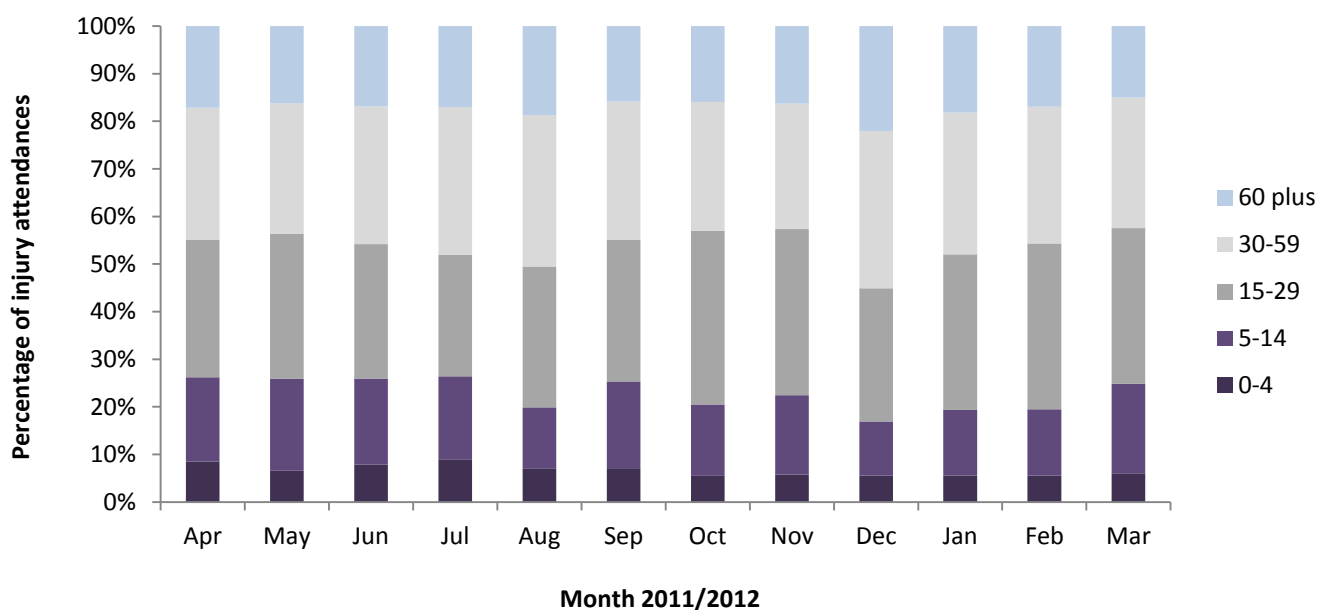


Table 1: ED injury attendances by source of referral and month, April 2011 to March 2012^{1,2,3}

Source of referral	Apr	May	Jun	Jul	Aug	Sep	Oct	Nov	Dec	Jan	Feb	Mar	Total	%
Self referral	758	917	711	766	671	756	736	705	612	624	642	777	8675	56
Other	416	430	381	428	286	390	320	360	285	306	274	404	4280	27
Emergency services	200	206	199	200	178	221	187	143	130	114	98	139	2015	13
Work	15	20	18	26	19	23	11	15	19	18	16	22	222	1
Educational establishment	10	28	15	14	***	33	16	29	<9	17	11	38	219	1
GP	***	10	12	<10	12	22	20	13	7	11	<6	8	133	1
Police	5	<9	<6	11	5	***	***	<7	14	***	***	<7	73	0
Health care provider: same or other	***	***	***	***	***	***	***	***	***	***	***	***	5	0
Total	1411	1619	1342	1454	1172	1448	1294	1271	1075	1094	1048	1394	15622	100

¹Please note that all numbers less than five have been suppressed (with ***) in line with patient confidentiality and if there is only one number less than five in a category then two numbers will be suppressed to prevent back calculations from totals.

² GP=general practitioner.

³ Please note percentages might not add to one hundred due to rounding.

Table 2: ED injury attendances by injury group and month, April 2011 to March 2012

Injury group	Apr	May	Jun	Jul	Aug	Sep	Oct	Nov	Dec	Jan	Feb	Mar	Total	%
Other injury	1110	1342	1072	1195	922	1140	947	953	861	831	791	1009	12173	78
Sports injury	153	132	139	109	119	149	200	199	91	140	157	245	1833	12
RTC	97	109	95	85	78	124	87	82	81	96	73	90	1097	7
Assault	32	31	29	<43	<41	23	48	23	33	19	21	40	381	2
Deliberate self-harm	19	5	7	***	***	12	12	14	9	8	6	10	138	1
Total	1411	1619	1342	1454	1172	1448	1294	1271	1075	1094	1048	1394	15622	100

Table 3: ED injury attendances by incident location and month, April 2011 to March 2012*

Location	Apr	May	Jun	Jul	Aug	Sep	Oct	Nov	Dec	Jan	Feb	Mar	Total	%
Home	446	501	398	465	349	415	385	380	401	393	313	400	4846	31
Public place	339	370	308	328	348	360	343	441	348	341	421	442	4389	28
Other	502	539	472	476	379	457	381	255	211	200	166	313	4351	28
Workplace	84	113	98	120	91	106	87	85	72	74	81	105	1116	7
Educational establishment	40	96	66	65	5	109	97	108	42	86	67	133	914	6
Total	1411	1619	1342	1454	1172	1448	1294	1271	1075	1094	1048	1394	15622	100

*There were 6 attendances where location was unknown.

Table 4: ED injury attendances by discharge destination and month, April 2011 to March 2012

Discharge destination	Apr	May	Jun	Jul	Aug	Sep	Oct	Nov	Dec	Jan	Feb	Mar	Total	%
Discharged - no follow-up	822	976	804	836	645	834	683	712	558	638	577	790	8875	57
Fracture clinic	227	277	207	225	174	234	197	210	177	188	209	235	2560	16
Admitted	152	128	107	131	106	127	105	107	104	87	83	110	1347	9
Discharge – follow-up care by GP	67	90	97	102	109	108	147	108	119	80	80	92	1199	8
Left - before being treated	69	73	48	80	65	67	74	58	46	36	55	76	747	5
Out-patient clinic	24	24	27	25	22	31	26	24	32	32	17	28	312	2
ED clinic	16	18	20	18	19	18	27	18	14	13	9	30	220	1
Other health care professional	16	20	17	19	15	15	22	18	16	15	7	19	199	1
Transferred to other health care provider	7	***	6	10	8	***	6	***	6	***	***	***	60	0
Left - refused treatment	6	***	***	6	***	7	***	9	***	***	5	7	59	0
Other	***	6	***	***	***	***	***	***	***	***	***	5	31	0
Died in department	***	***	***	***	***	***	***	***	***	***	***	***	9	0
Unknown	***	***	***	***	***	***	***	***	***	***	***	***	***	0
Restored to ward	***	***	***	***	***	***	***	***	***	***	***	***	***	0
Total	1411	1619	1342	1454	1172	1448	1294	1271	1075	1094	1048	1394	15622	100

Assaults

Table 5: ED assault attendances by age group and month, April 2011 to March 2012

Age group	Apr	May	Jun	Jul	Aug	Sep	Oct	Nov	Dec	Jan	Feb	Mar	Total	%
0-4	***	***	***	***	***	***	***	***	***	***	***	***	***	1
5-14	***	***	***	***	***	***	***	***	***	***	***	***	18	5
15-29	18	18	18	17	17	7	29	15	19	9	16	23	206	54
30-59	11	10	8	20	20	13	16	8	14	<8	***	14	145	38
60 plus	***	***	***	***	***	***	***	***	***	***	***	***	<10	2
Total	32	31	29	42	40	23	48	23	33	19	21	40	381	100

Figure 3: Number of ED assault attendances by gender and month, April 2011 to March 2012

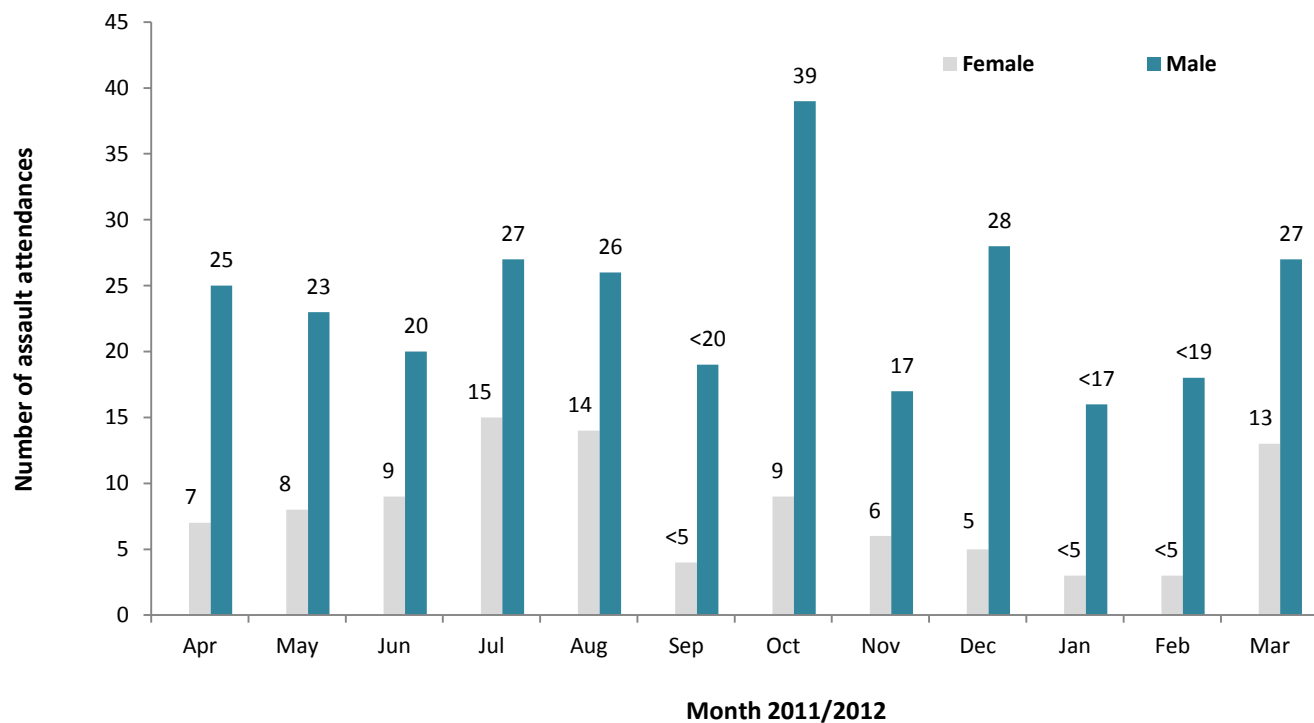


Table 6: ED assault attendances by incident location and month, April 2011 to March 2012

Location	Apr	May	Jun	Jul	Aug	Sep	Oct	Nov	Dec	Jan	Feb	Mar	Total	%
Other	13	19	19	23	14	12	16	9	7	<6	***	9	149	39
Public place	12	***	<6	9	16	5	24	8	18	7	15	22	145	38
Home	7	6	***	5	9	6	5	5	7	6	***	***	66	17
Workplace	***	***	***	<6	***	***	***	***	***	***	***	***	13	3
Educational establishment	***	***	***	***	***	***	***	***	***	***	***	***	8	2
Total	32	31	29	42	40	23	48	23	33	19	21	40	381	100

Table 7: ED assault attendances by discharge destination and month, April 2011 to March 2012

Discharge destination	Apr	May	Jun	Jul	Aug	Sep	Oct	Nov	Dec	Jan	Feb	Mar	Total	%
Discharged	15	18	22	24	23	14	21	14	15	8	9	20	203	53
Follow-up	***	5	***	7	7	***	13	***	14	7	7	9	81	21
Other	<8	<6	***	<9	<9	***	9	***	***	***	***	<9	60	16
Admitted	6	***	***	***	***	***	5	***	***	***	***	***	37	10
Total	32	31	29	42	40	23	48	23	33	19	21	40	381	100

Published May 2012

Johnathan Rooney (TIIG Officer)

Centre for Public Health, Liverpool John Moores University, 2nd Floor, Henry Cotton Campus, Liverpool, L3 2ET

Tel: 0151 231 4539 Email: j.rooney@ljmu.ac.uk

Website: www.tiig.info (please note data requests should be made through the website)