

Royal Lancaster Infirmary Emergency Department

Monthly Bulletin: January to December 2011

This bulletin provides a breakdown of all injury attendances at Royal Lancaster Infirmary Emergency Department (ED) between January and December 2011.

Between January and December 2011 there were 15,962 injury attendances to Royal Lancaster Infirmary ED. The month with the highest attendance was May with 1,619 attendances (**Figure 1**). There were more male than female attendances presenting at Royal Lancaster Infirmary ED (males=8,918; 56%).

Figure 2 illustrates age group of ED attendances for each month. The majority of ED attendances were aged 15-29 (n=4,945; 31%) and 30-59 years (n=4,602; 29%).

The referral source of injury attendances to the Royal Lancaster Infirmary ED are shown in **Table 1**. Most ED attendances self-referred (56%), 26% had their referral method recorded as other and 14% were referred by the emergency services.

Table 2 details the injury group of ED attendances. For the majority (78%) of attendances, injury group was recorded as other injury. Sports injury accounted for 12% of attendances, 7% were road traffic collisions (RTC) and 3% were assaults.

Table 3 shows the location of incident for injury attendances, over three in ten (31%) of incident locations were recorded in the home. This was followed by other location (30%) and in a public place (26%).

Table 4 illustrates the discharge destination for patients attending Royal Lancaster Infirmary ED. Almost six in ten (58%) of attendances were discharged, 16% were referred to the fracture clinic and 9% were admitted to hospital, while nearly one in ten (7%) were discharged in to the care of their GP.

Assault attendances

Between January and December 2011 there were 405 assault attendances to Royal Lancaster Infirmary ED. The month with the highest attendance was October with 48 attendances (**Figure 3**). There were more male than female assault attendances presenting at Royal Lancaster Infirmary ED (males=303; 75%).

Table 5 shows age group of assault attendances for each month. The majority of ED assault attendances were aged 15-29 years (n=228; 56%) and 35% were 30-59 (n=142).

Table 6 illustrates the location of incident for assault attendances to Royal Lancaster Infirmary ED. The primary incident location for assault attendances was other (45%), followed by public place (32%).

Table 7 shows the discharge destination for assault attendees. Almost six in ten (58%) of assault attendances were discharged. Nearly a fifth (18%) required follow-up treatment, while almost one in ten (9%) were admitted to hospital.

Figure 1: ED injury attendances by gender and month, January to December 2011

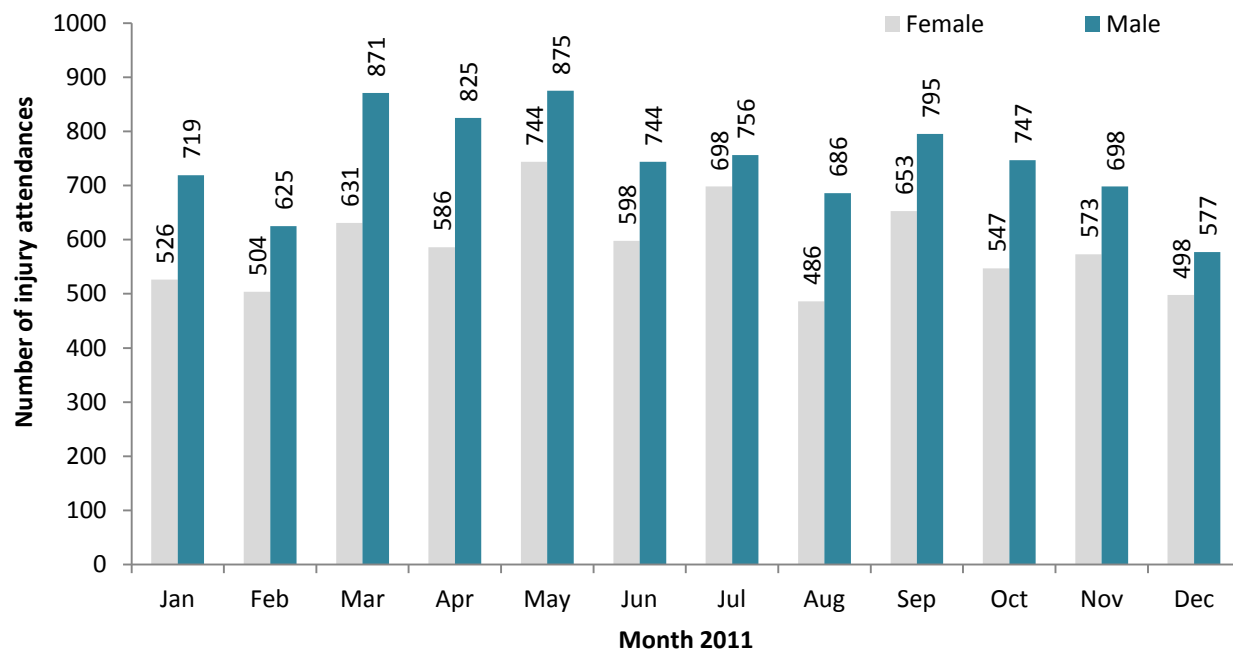


Figure 2: Age group of ED injury attendances by month, January to December 2011

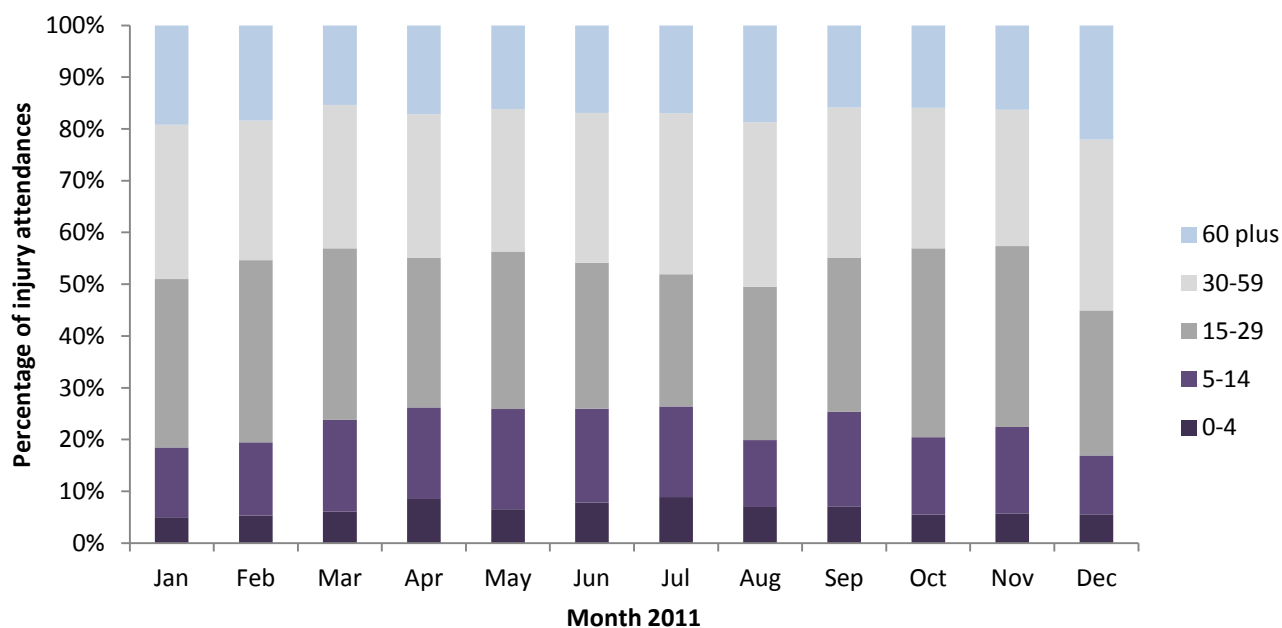


Table 1: ED injury attendances by source of referral and month, January to December 2011¹²

Source of referral	Jan	Feb	Mar	Apr	May	Jun	Jul	Aug	Sep	Oct	Nov	Dec	Total	%
Self referral	733	669	889	758	917	711	766	671	756	736	705	612	8923	56
Other	237	229	360	416	430	381	428	286	390	320	360	285	4122	26
Emergency services	208	180	211	200	206	199	200	178	221	187	143	130	2263	14
Work	31	16	9	15	20	18	26	19	23	11	15	19	222	1
Educational establishment	26	19	10	10	28	15	14	***	33	16	29	<9	208	1
GP	5	10	13	***	10	12	9	12	22	20	13	7	137	1
Police	5	6	<10	5	8	<6	11	5	***	***	6	14	81	1
Health care provider: same or other	0	0	***	***	0	***	0	***	***	***	0	***	6	0
Total	1245	1129	1502	1411	1619	1342	1454	1172	1448	1294	1271	1075	15962	100

¹Please note that all numbers less than five have been suppressed (with ***) in line with patient confidentiality and if there is only one number less than five in a category then two numbers will be suppressed to prevent back calculations from totals.

² GP=general practitioner.

Table 2: ED injury attendances by injury group and month, January to December 2011³

Injury group	Jan	Feb	Mar	Apr	May	Jun	Jul	Aug	Sep	Oct	Nov	Dec	Total	%
Other injury	945	848	1079	1110	1342	1072	1195	922	1140	947	953	861	12414	78
Sports injury	160	194	255	153	132	139	109	119	149	200	199	91	1900	12
RTC	92	62	111	97	109	95	85	78	124	87	82	81	1103	7
Assault	<46	<22	38	<33	<32	29	42	40	23	48	23	33	405	3
Deliberate self-harm	***	***	19	***	***	7	23	13	12	12	14	9	140	1
Total	1245	1129	1502	1411	1619	1342	1454	1172	1448	1294	1271	1075	15962	100

Table 3: ED injury attendances by incident location and month, January to December 2011*

Location	Jan	Feb	Mar	Apr	May	Jun	Jul	Aug	Sep	Oct	Nov	Dec	Total	%
Home	408	378	433	446	501	398	465	349	415	385	380	401	4959	31
Other	319	298	511	502	539	472	476	379	458	382	257	212	4805	30
Public place	318	291	323	339	370	308	328	348	360	343	441	348	4117	26
Workplace	96	77	107	84	113	98	120	91	106	87	85	72	1136	7
Educational establishment	104	85	128	40	96	66	65	5	109	97	108	42	945	6
Total	1245	1129	1502	1411	1619	1342	1454	1172	1448	1294	1271	1075	15962	100

*There were five attendances where location was unknown.

Table 4: ED injury attendances by discharge destination and month, January to December 2011

Discharge destination	Jan	Feb	Mar	Apr	May	Jun	Jul	Aug	Sep	Oct	Nov	Dec	Total	%
Discharged - no follow-up	757	711	916	822	976	804	836	645	834	683	712	558	9254	58
Fracture clinic	167	164	241	227	277	207	225	174	234	197	210	177	2500	16
Admitted	131	106	135	152	128	107	131	106	127	105	107	104	1439	9
Discharge - follow up care by GP	78	57	64	67	90	97	102	109	108	147	108	119	1146	7
Left - before being treated	55	32	67	69	73	48	80	65	67	74	58	46	734	5
Out-patient clinic	24	23	32	24	24	27	25	22	31	26	24	32	314	2
ED clinic	15	19	14	16	18	20	18	19	18	27	18	14	216	1
Other health care professional	9	9	17	16	20	17	19	15	15	22	18	16	193	1
Transferred to other health care provider	***	***	7	7	***	6	10	8	***	6	***	6	64	0
Left - refused treatment	5	***	***	6	***	***	6	***	7	***	9	***	55	0
Other	***	***	***	***	6	***	***	***	***	***	***	***	30	0
Died in department	***	***	***	***	***	***	***	***	***	***	***	***	12	0
Unknown	***	***	***	***	***	***	***	***	***	***	***	***	5	0
Total	1245	1129	1502	1411	1619	1342	1454	1172	1448	1294	1271	1075	15962	100

Assaults

Table 5: ED assault attendances by age group and month, January to December 2011

Age group	Jan	Feb	Mar	Apr	May	Jun	Jul	Aug	Sep	Oct	Nov	Dec	Total	%
0-4	***	***	***	***	***	***	***	***	***	***	***	***	***	1
5-14	5	***	***	***	***	***	***	***	***	***	***	***	20	5
15-29	29	15	26	18	18	18	17	17	7	29	15	19	228	56
30-59	10	5	7	11	10	8	20	20	13	16	8	14	142	35
60 plus	***	***	***	***	***	***	***	***	***	***	***	***	<12	3
Total	<46	<22	38	<33	<32	29	42	40	<24	48	23	33	405	100

³ Please note percentages might not add to one hundred due to rounding.

Figure 3: Number of ED assault attendances by gender and month, January to December 2011

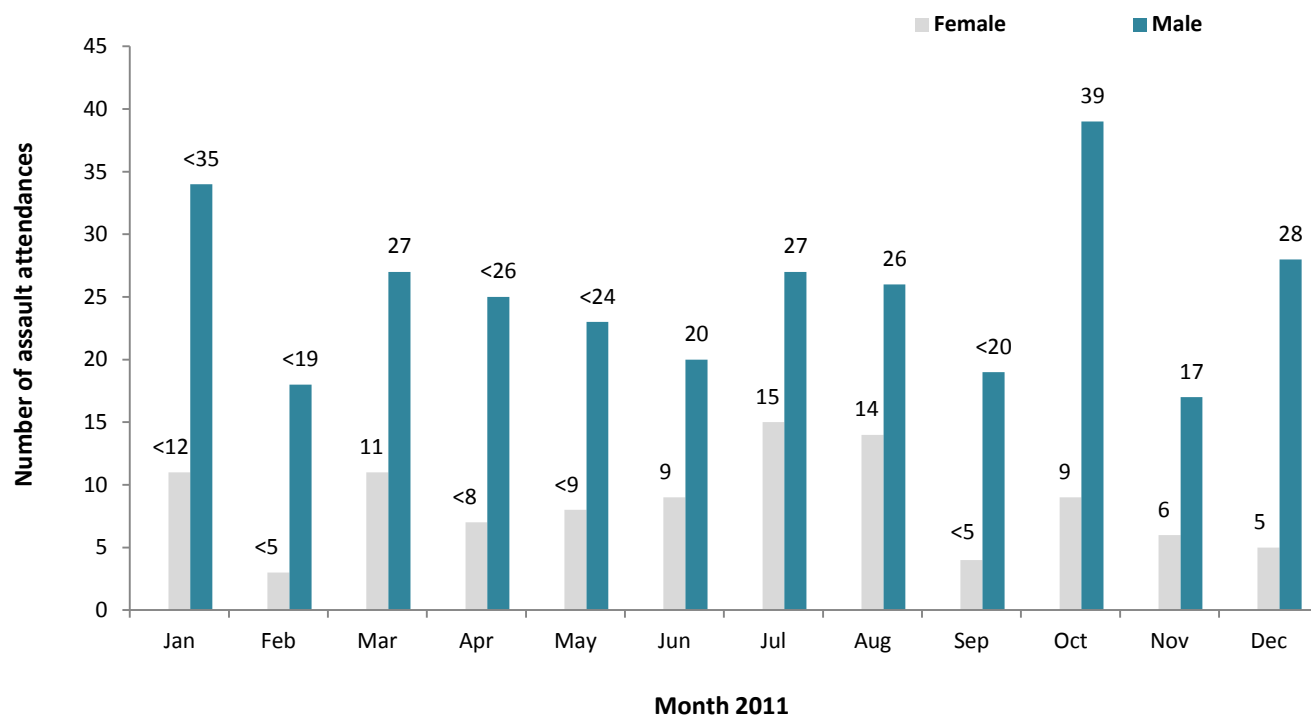


Table 6: ED assault attendances by incident location and month, January to December 2011

Location	Jan	Feb	Mar	Apr	May	Jun	Jul	Aug	Sep	Oct	Nov	Dec	Total	%
Other	23	8	19	13	19	19	23	14	12	16	9	7	182	45
Public place	15	***	8	12	***	5	9	16	5	24	8	18	128	32
Home	***	7	10	7	6	***	5	9	6	5	5	7	73	18
Workplace	***	***	***	***	***	***	5	***	***	***	***	***	13	3
Educational establishment	***	***	***	***	***	***	0	***	***	***	***	***	9	2
Total	<46	<22	38	<33	<32	29	42	40	<24	48	23	33	405	100

Table 7: ED assault attendances by discharge destination and month, January to December 2011

Discharge destination	Jan	Feb	Mar	Apr	May	Jun	Jul	Aug	Sep	Oct	Nov	Dec	Total	%
Discharged	30	11	27	15	18	22	24	23	14	21	14	15	234	58
Follow-up	7	***	***	***	5	***	7	7	***	13	***	14	71	18
Other	<6	5	***	7	<6	***	<9	<9	***	9	***	***	62	15
Admitted	***	***	***	<7	***	***	***	***	***	5	***	***	38	9
Total	<46	<22	38	<33	<32	29	42	40	<24	48	23	33	405	100