

Royal Lancaster Infirmary Emergency Department

Monthly Bulletin: July 2011 to June 2012

This bulletin provides a breakdown of all injury attendances at Royal Lancaster Infirmary Emergency Department (ED) between July 2011 and June 2012.

Between July 2011 and June 2012 there were 14,993 injury attendances to Royal Lancaster Infirmary ED. The month with the highest attendance was July with 1,454 attendances (**Figure 1**). There were more male than female attendances presenting at Royal Lancaster Infirmary ED (males=8,267; 55%).

Figure 2 illustrates age group of ED attendances for each month. The majority of ED attendances were aged 15-29 (n=4,646; 31%) and 30-59 years (n=4,340; 29%).

The referral source of injury attendances to the Royal Lancaster Infirmary ED are shown in **Table 1**. Most ED attendances self-referred (56%), 28% had their referral method recorded as other and 12% were referred by the emergency services.

Table 2 details the injury group of ED attendances. For the majority (78%) of attendances, injury group was recorded as other injury. Sports injury accounted for 12% of attendances, 7% were road traffic collisions (RTC) and 2% were assaults.

Table 3 shows the location of incident for injury attendances; over three in ten incident locations were recorded in a public place (31%) and in the home (31%). This was followed by other location (24%).

Table 4 illustrates the discharge destination for patients attending Royal Lancaster Infirmary ED. Almost six in ten (56%) of attendances were discharged, 17% were referred to the fracture clinic and 8% were admitted to hospital; while nearly one in ten (8%) were discharged into the care of their GP.

Assault attendances

Between July 2011 and June 2012 there were 355 assault attendances to Royal Lancaster Infirmary ED. The month with the highest attendance was October with 48 attendances (**Figure 3**). There were more male than female assault attendances presenting at Royal Lancaster Infirmary ED (males=260; 73%).

Table 5 shows age group of assault attendances for each month. The majority of ED assault attendances were aged 15-29 years (n=187; 53%) and 40% were aged 30-59 years (n=143).

Table 6 illustrates the location of incident for assault attendances to Royal Lancaster Infirmary ED. The primary incident location for assault attendances was public place (44%), followed by other (32%).

Table 7 shows the discharge destination for assault attendees. Over half (52%) of assault attendances were discharged. Almost three in ten (27%) required follow-up treatment, while nearly one in ten (7%) were admitted to hospital.

Figure 1: ED injury attendances by gender and month, July 2011 to June 2012

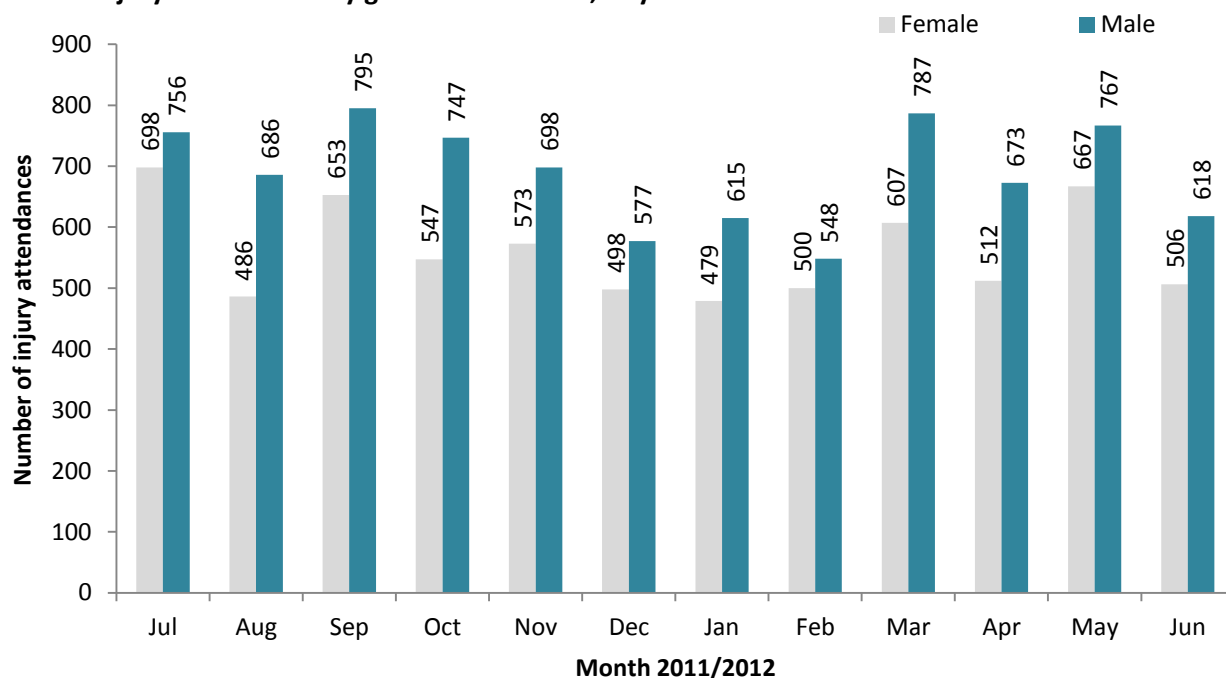


Figure 2: Age group of ED injury attendances by month, July 2011 to June 2012

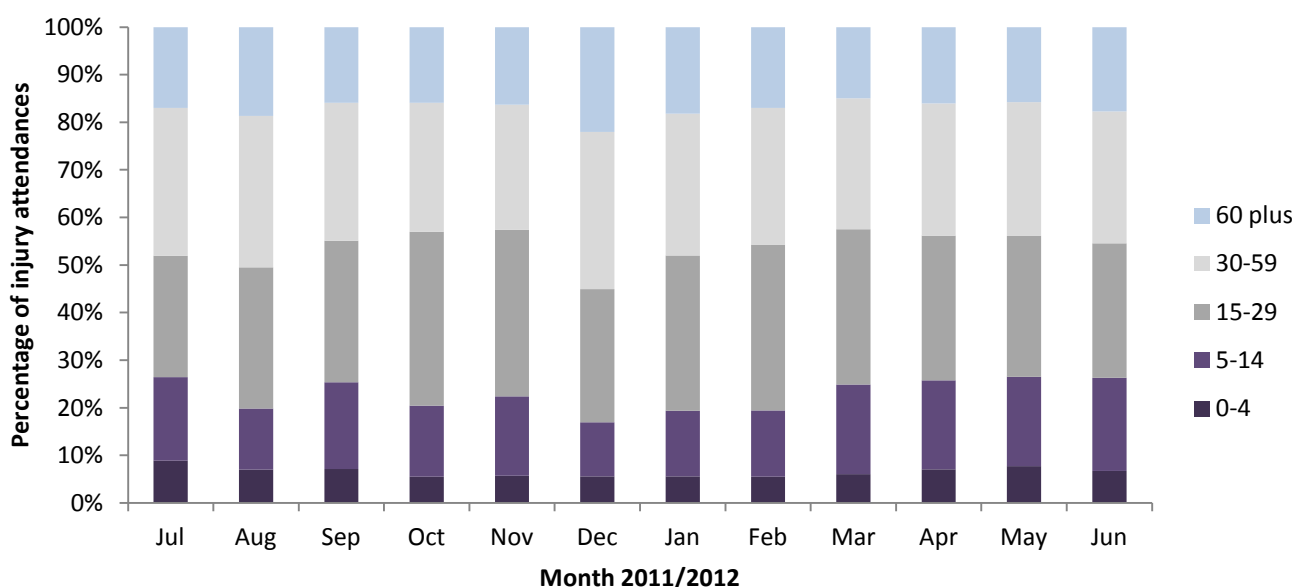


Table 1: ED injury attendances by source of referral and month, July 2011 to June 2012^{1,2}

Source of referral	Jul	Aug	Sep	Oct	Nov	Dec	Jan	Feb	Mar	Apr	May	Jun	Total	%
Self referral	766	671	756	736	705	612	624	642	777	646	783	626	8344	56
Other	428	286	390	320	360	285	306	274	404	365	448	358	4224	28
Emergency services	200	178	221	187	143	130	114	98	139	122	151	97	1780	12
Work	26	19	23	11	15	19	18	16	22	22	21	15	227	2
Educational establishment	14	***	33	16	29	<9	17	11	38	17	20	15	218	1
GP	9	12	22	20	13	7	11	5	8	6	7	8	128	1
Police	11	5	***	***	6	14	***	***	6	7	***	5	71	0
Unknown	***	***	***	***	***	***	***	***	***	***	***	***	***	0
Health care provider: same or other	***	***	***	***	***	***	***	***	***	***	***	***	***	0
Total	1454	1172	1448	1294	1271	1075	1094	1048	1394	1185	1434	1124	14993	100

¹Please note that all numbers less than five have been suppressed (with ***) in line with patient confidentiality and if there is only one number less than five in a category then two numbers will be suppressed to prevent back calculations from totals.

²GP=general practitioner.

Table 2: ED injury attendances by injury group and month, July 2011 to June 2012

Injury group	Jul	Aug	Sep	Oct	Nov	Dec	Jan	Feb	Mar	Apr	May	Jun	Total	%
Other injury	1195	922	1140	947	953	861	831	791	1009	905	1166	903	11623	78
Sports injury	109	119	149	200	199	91	140	157	245	148	139	113	1809	12
RTC	85	78	124	87	82	81	96	73	90	99	86	74	1055	7
Assault	42	40	23	<49	<24	33	19	21	40	18	26	22	355	2
Deliberate self-harm	23	13	12	***	***	9	8	6	10	15	17	12	151	1
Total	1454	1172	1448	1294	1271	1075	1094	1048	1394	1185	1434	1124	14993	100

Table 3: ED injury attendances by incident location and month, July 2011 to June 2012*³

Location	Jul	Aug	Sep	Oct	Nov	Dec	Jan	Feb	Mar	Apr	May	Jun	Total	%
Public place	328	348	360	343	441	348	341	421	442	425	489	392	4678	31
Home	465	349	415	385	380	401	393	313	400	369	455	322	4647	31
Other	476	379	457	381	255	211	200	166	313	248	304	272	3662	24
Workplace	120	91	106	87	85	72	74	81	105	96	103	71	1091	7
Educational establishment	65	5	109	97	108	42	86	67	133	47	83	67	909	6
Total	1454	1172	1448	1294	1271	1075	1094	1048	1394	1185	1434	1124	14993	100

*There were 6 attendances where location was unknown.

Table 4: ED injury attendances by discharge destination and month, July 2011 to June 2012

Discharge destination	Jul	Aug	Sep	Oct	Nov	Dec	Jan	Feb	Mar	Apr	May	Jun	Total	%
Discharged - no follow-up	836	645	834	683	712	558	638	577	790	661	838	559	8331	56
Fracture clinic	225	174	234	197	210	177	188	209	235	211	261	241	2562	17
Admitted	131	106	127	105	107	104	87	83	110	91	114	102	1267	8
Discharge – follow-up care by GP	102	109	108	147	108	119	80	80	92	86	63	94	1188	8
Left - before being treated	80	65	67	74	58	46	36	55	76	51	52	53	713	5
Out-patient clinic	25	22	31	26	24	32	32	17	28	23	36	21	317	2
ED clinic	18	19	18	27	18	14	13	9	30	31	42	20	259	2
Other health care professional	19	15	15	22	18	16	15	7	19	17	14	21	198	1
Left - refused treatment	6	***	7	***	9	***	***	5	7	***	7	7	64	0
Transferred to other health care provider	10	8	***	6	***	6	***	***	***	***	***	***	55	0
Other	***	***	***	***	***	***	***	***	5	7	***	***	30	0
Died in department	***	***	***	***	***	***	***	***	***	***	***	***	<7	0
Unknown	***	***	***	***	***	***	***	***	***	***	***	***	***	0
Total	1454	1172	1448	1294	1271	1075	1094	1048	1394	1185	1434	1124	14993	100

Assaults

Table 5: ED assault attendances by age group and month, July 2011 to June 2012**

Age group	Jul	Aug	Sep	Oct	Nov	Dec	Jan	Feb	Mar	Apr	May	Jun	Total	%
5-14	***	***	***	***	***	***	***	***	***	***	***	***	17	5
15-29	17	17	7	29	15	19	9	16	23	8	14	13	187	53
30-59	20	20	13	16	8	14	<8	***	14	8	11	8	143	40
60 plus	***	***	***	***	***	***	***	***	***	***	***	***	7	2
Total	42	40	23	48	23	33	19	21	40	18	26	22	355	100

**There was one attendance in the 0-4 age group.

³ Please note percentages might not add to one hundred due to rounding.

Figure 3: Number of ED assault attendances by gender and month, July 2011 to June 2012

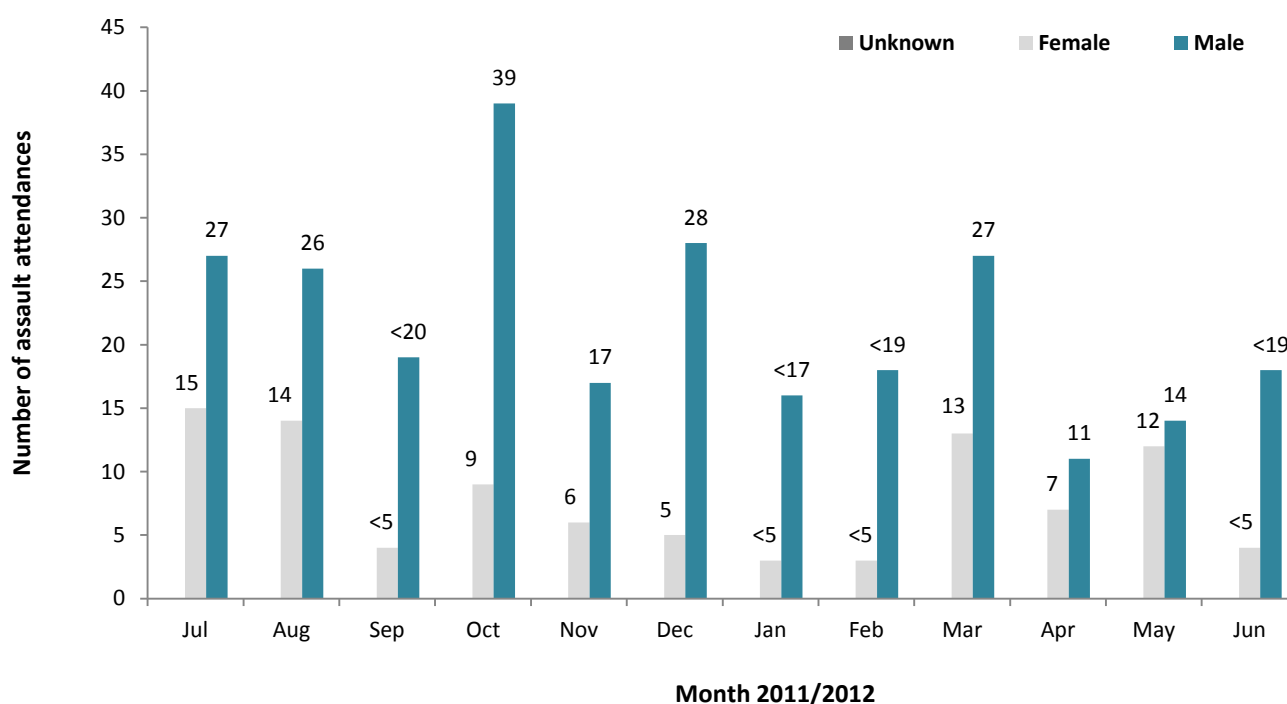


Table 6: ED assault attendances by incident location and month, July 2011 to June 2012

Location	Jul	Aug	Sep	Oct	Nov	Dec	Jan	Feb	Mar	Apr	May	Jun	Total	%
Public place	9	16	5	24	8	18	7	15	22	5	13	15	157	44
Other	23	14	12	16	9	7	5	***	9	7	***	***	112	32
Home	5	9	6	5	5	7	6	***	***	***	8	***	64	18
Workplace	<6	***	***	***	***	***	***	***	***	***	***	***	14	4
Educational establishment	***	***	***	***	***	***	***	***	***	***	***	***	8	2
Total	42	40	23	48	23	33	19	21	40	18	26	22	355	100

Table 7: ED assault attendances by discharge destination and month, July 2011 to June 2012

Discharge destination	Jul	Aug	Sep	Oct	Nov	Dec	Jan	Feb	Mar	Apr	May	Jun	Total	%
Discharged	24	23	14	21	14	15	8	9	20	10	15	10	183	52
Follow-up	7	7	***	13	***	14	7	7	9	7	7	10	95	27
Other	<9	<9	***	9	***	***	***	***	<9	***	***	***	51	14
Admitted	***	***	***	5	***	***	***	***	***	***	***	***	26	7
Total	42	40	23	48	23	33	19	21	40	18	26	22	355	100