

Royal Lancaster Infirmary Emergency Department

Monthly Bulletin: October 2011 to September 2012

This bulletin provides a breakdown of all injury attendances at Royal Lancaster Infirmary Emergency Department (ED) between October 2011 and September 2012.

Between October 2011 and September 2012 there were 14,831 injury attendances to Royal Lancaster Infirmary ED. The month with the highest attendance was July with 1,439 attendances (**Figure 1**). There were more male than female attendances presenting at Royal Lancaster Infirmary ED (males=8,242; 56%).

Figure 2 illustrates age group of ED attendances for each month. The majority of ED attendances were aged 15-29 (n=4,604; 31%) and 30-59 years (n=4,302; 29%).

The referral source of injury attendances to the Royal Lancaster Infirmary ED are shown in **Table 1**. Most ED attendances self-referred (56%), 29% had their referral method recorded as other and 11% were referred by the emergency services.

Table 2 details the injury group of ED attendances. For the majority (77%) of attendances, injury group was recorded as other injury. Sports injury accounted for 12% of attendances, 7% were road traffic collisions (RTC) and 2% were assaults.

Table 3 shows the location of incident for injury attendances; over three in ten incident locations were recorded in a public place (34%) and in the home (31%). This was followed by other location (22%).

Table 4 illustrates the discharge destination for patients attending Royal Lancaster Infirmary ED. Over five in ten (54%) of attendances were discharged, 17% were referred to the fracture clinic and 9% were discharged into the care of their GP; while nearly one in ten (9%) were admitted to hospital.

Assault attendances

Between October 2011 and September 2012 there were 341 assault attendances to Royal Lancaster Infirmary ED. The month with the highest attendance was October with 48 attendances (**Figure 3**). There were more male than female assault attendances presenting at Royal Lancaster Infirmary ED (males=250; 73%).

Table 5 shows age group of assault attendances for each month. The majority of ED assault attendances were aged 15-29 years (n=189; 55%) and 37% were aged 30-59 years (n=125).

Table 6 illustrates the location of incident for assault attendances to Royal Lancaster Infirmary ED. The primary incident location for assault attendances was public place (49%), followed by other (30%).

Table 7 shows the discharge destination for assault attendees. Almost half (48%) of assault attendances were discharged. Almost three in ten (28%) required follow-up treatment, while nearly one in ten (9%) were admitted to hospital.

Figure 1: ED injury attendances by gender and month, October 2011 to September 2012

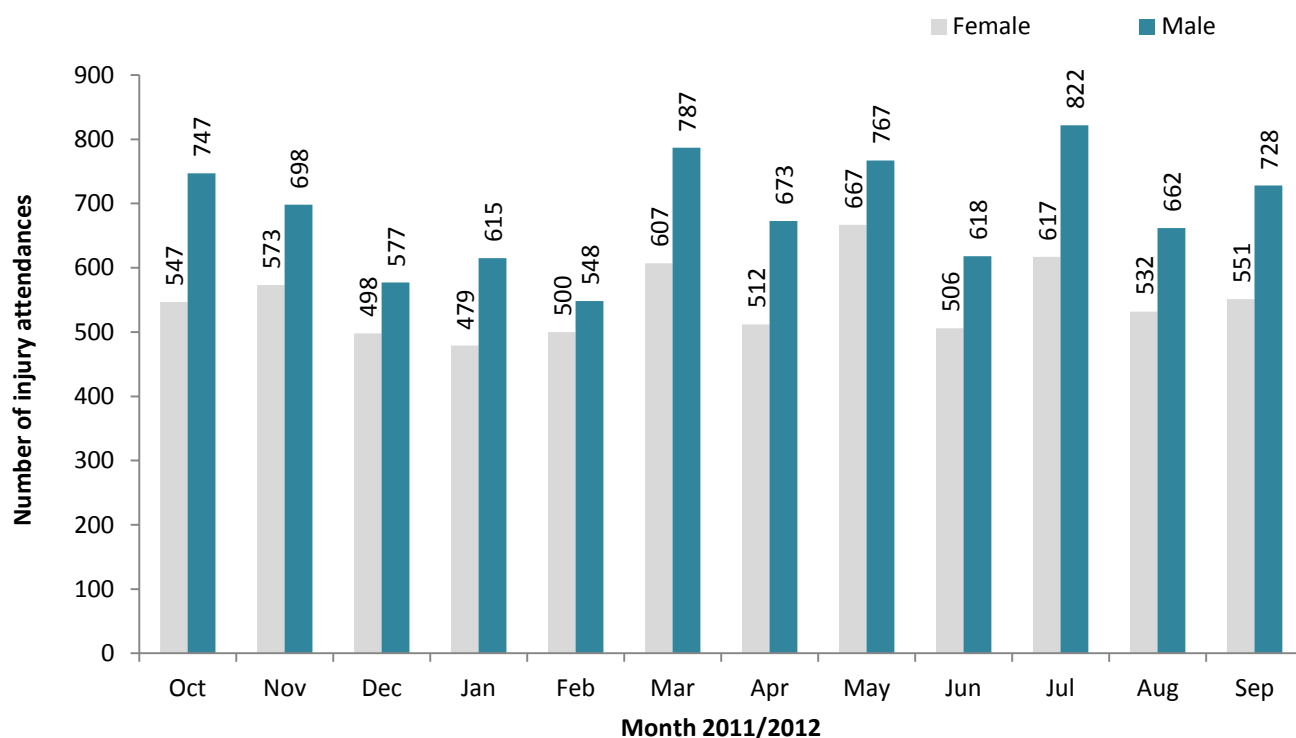


Figure 2: Age group of ED injury attendances by month, October 2011 to September 2012

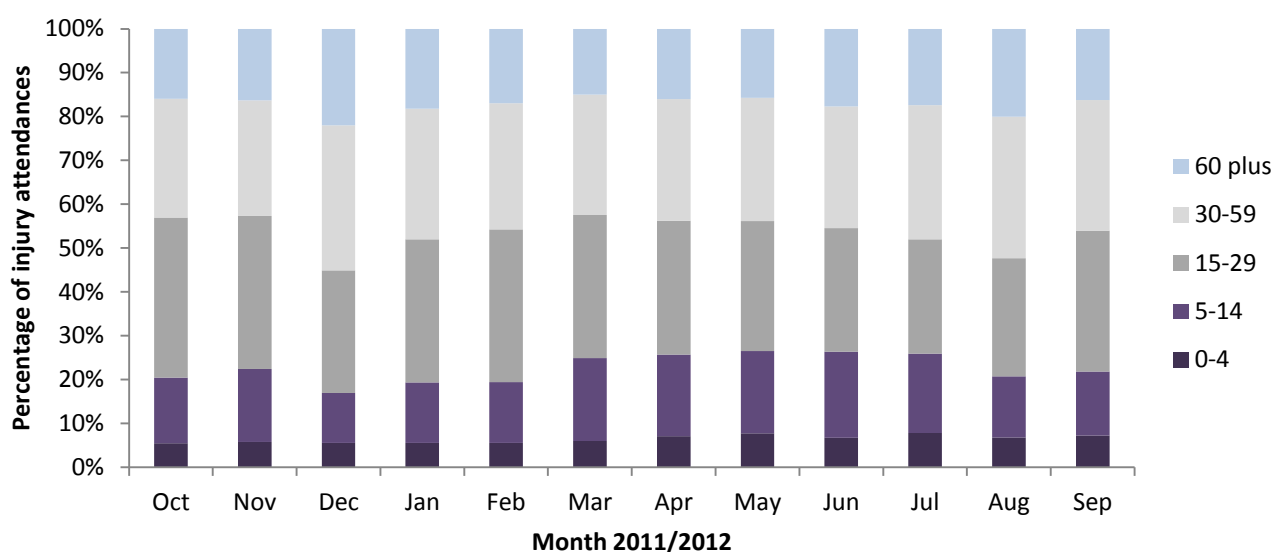


Table 1: ED injury attendances by source of referral and month, October 2011 to September 2012^{1,2}

Source of referral	Oct	Nov	Dec	Jan	Feb	Mar	Apr	May	Jun	Jul	Aug	Sep	Total	%
Self referral	736	705	612	624	642	777	646	783	626	764	651	718	8284	56
Other	320	360	285	306	274	404	365	448	358	422	323	364	4229	29
Emergency services	187	143	130	114	98	139	122	151	97	191	174	139	1685	11
Work	11	15	19	18	16	22	22	21	15	17	23	22	221	1
Educational establishment	<17	29	8	17	11	38	17	20	15	19	***	17	207	1
GP	20	13	7	<12	<6	8	6	<8	8	14	<8	5	111	1
Police	***	6	14	***	***	6	7	***	5	12	16	14	94	1
Total	1294	1271	1075	1094	1048	1394	1185	1434	1124	1439	1194	1279	14831	100

¹Please note that all numbers less than five have been suppressed (with ***) in line with patient confidentiality and if there is only one number less than five in a category then two numbers will be suppressed to prevent back calculations from totals.

² GP=general practitioner.

Table 2: ED injury attendances by injury group and month, October 2011 to September 2012³

Injury group	Oct	Nov	Dec	Jan	Feb	Mar	Apr	May	Jun	Jul	Aug	Sep	Total	%
Other injury	947	953	861	831	791	1009	905	1166	903	1154	946	947	11413	77
Sports injury	200	199	91	140	157	245	148	139	113	125	110	179	1846	12
RTC	87	82	81	96	73	90	99	86	74	99	91	99	1057	7
Assault	48	23	33	<20	<22	40	18	26	22	33	25	33	341	2
Deliberate self-harm	12	14	9	***	***	10	15	17	12	28	22	21	174	1
Total	1294	1271	1075	1094	1048	1394	1185	1434	1124	1439	1194	1279	14831	100

Table 3: ED injury attendances by incident location and month, October 2011 to September 2012*

Location	Oct	Nov	Dec	Jan	Feb	Mar	Apr	May	Jun	Jul	Aug	Sep	Total	%
Public place	343	441	348	341	421	442	425	489	392	486	444	468	5040	34
Home	385	380	401	393	313	400	369	455	322	424	407	391	4640	31
Other	381	255	211	200	166	313	248	304	272	370	258	238	3216	22
Workplace	87	85	<73	74	81	105	96	103	71	100	<83	101	1057	7
Educational establishment	97	108	<43	86	67	133	47	83	67	58	***	81	872	6
Total	1294	1271	1075	1094	1048	1394	1185	1434	1124	1439	1194	1279	14831	100

*There were 6 attendances where location was unknown.

Table 4: ED injury attendances by discharge destination and month, October 2011 to September 2012

Discharge destination	Oct	Nov	Dec	Jan	Feb	Mar	Apr	May	Jun	Jul	Aug	Sep	Total	%
Discharged - no follow-up	683	712	558	638	577	790	661	838	559	747	593	700	8056	54
Fracture clinic	197	210	177	188	209	235	211	261	241	247	204	202	2582	17
Discharge – follow-up care by GP	147	108	119	80	80	92	86	63	94	136	144	148	1297	9
Admitted	105	107	104	87	83	110	91	114	102	155	112	107	1277	9
Left - before being treated	74	58	46	36	55	76	51	52	53	45	46	34	626	4
Out-patient clinic	26	24	32	32	17	28	23	36	21	33	29	26	327	2
ED clinic	27	18	14	13	9	30	31	42	20	32	22	21	279	2
Other health care professional	22	18	16	15	7	19	17	14	21	17	22	22	210	1
Other	***	***	***	***	***	5	7	***	***	18	14	11	68	0
Left - refused treatment	***	9	***	***	5	7	***	7	7	6	5	***	61	0
Transferred to other health care provider	6	***	6	***	***	***	***	***	***	***	***	***	43	0
Unknown	***	***	***	***	***	***	***	***	***	***	***	***	***	0
Died in department	***	***	***	***	***	***	***	***	***	***	***	***	***	0
Restored to ward	***	***	***	***	***	***	***	***	***	***	***	***	***	0
Total	1294	1271	1075	1094	1048	1394	1185	1434	1124	1439	1194	1279	14831	100

Assaults

Table 5: ED assault attendances by age group and month, October 2011 to September 2012**

Age group	Oct	Nov	Dec	Jan	Feb	Mar	Apr	May	Jun	Jul	Aug	Sep	Total	%
5-14	***	***	***	***	***	***	***	***	***	***	***	***	20	6
15-29	29	15	19	9	16	23	8	14	13	15	12	16	189	55
30-59	16	<9	14	7	***	14	8	11	8	10	12	13	125	37
60 plus	***	***	***	***	***	***	***	***	***	***	***	***	5	1
Total	48	23	33	19	21	40	18	26	22	33	25	33	341	100

**There were two attendances in the 0-4 age group.

³ Please note percentages might not add to one hundred due to rounding.

Figure 3: Number of ED assault attendances by gender and month, October 2011 to September 2012

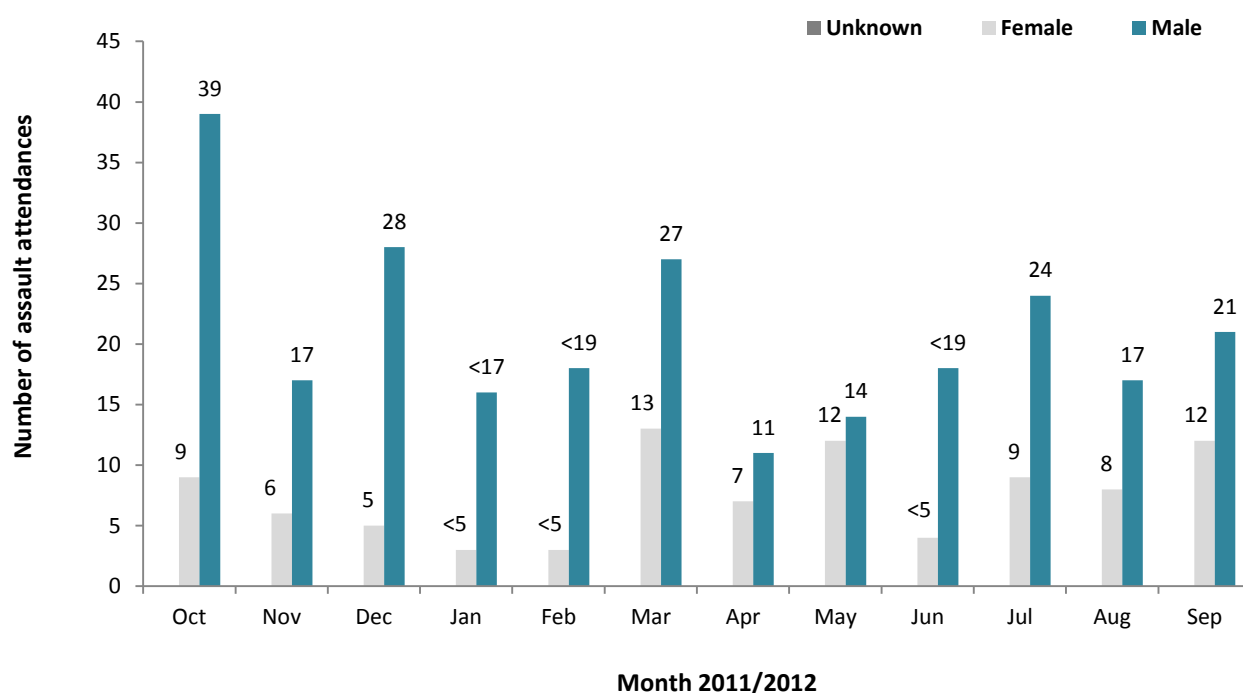


Table 6: ED assault attendances by incident location and month, October 2011 to September 2012

Location	Oct	Nov	Dec	Jan	Feb	Mar	Apr	May	Jun	Jul	Aug	Sep	Total	%
Public place	24	8	18	7	15	22	5	13	15	21	6	13	167	49
Other	16	9	7	5	***	9	7	***	***	10	12	16	101	30
Home	5	5	7	6	***	***	***	8	***	***	7	***	55	16
Educational establishment	***	***	***	***	***	***	***	***	***	***	***	***	9	3
Workplace	***	***	***	***	***	***	***	***	***	***	***	***	9	3
Total	48	23	33	19	21	40	18	26	22	33	25	33	341	100

Table 7: ED assault attendances by discharge destination and month, October 2011 to September 2012

Discharge destination	Oct	Nov	Dec	Jan	Feb	Mar	Apr	May	Jun	Jul	Aug	Sep	Total	%
Discharged	21	14	15	8	9	20	10	15	10	14	13	16	165	48
Follow-up	13	***	14	7	7	9	7	7	10	8	***	7	97	28
Other	9	***	***	***	***	<9	***	***	***	5	7	***	48	14
Admitted	5	***	***	***	***	***	***	***	***	6	***	<7	31	9
Total	48	23	33	19	21	40	18	26	22	33	25	33	341	100

Published January 2013

Johnathan Rooney (TIIG Officer)

Centre for Public Health, Liverpool John Moores University, 2nd Floor, Henry Cotton Campus, Liverpool, L3 2ET

Tel: 0151 231 4539 Email: j.rooney@ljmu.ac.uk

For enquiries please contact Val Upton: v.a.upton@ljmu.ac.uk

Website: www.tiig.info (please note data requests should be made through the website)