

TIIG

INJURY SURVEILLANCE IN THE NORTH WEST OF ENGLAND

Royal Lancaster Infirmary Emergency Department

Monthly Bulletin: April 2012 to March 2013

This bulletin provides a breakdown of all injury attendances to Royal Lancaster Infirmary Emergency Department (ED) between April 2012 and March 2013.

Between April 2012 and March 2013 there were 14,475 injury attendances to Royal Lancaster Infirmary ED. The month with the highest attendance was July with 1,439 attendances compared to 929 in December (**Figure 1**). There were more male than female attendees presenting at the ED (males=7,960; 55%).

Figure 2 illustrates the age group of ED attendances for each month. The majority of ED attendances were aged 15-29 (n=4,410; 30%) and 30-59 years (n=4,138; 29%).

The referral source of injury attendances to the Royal Lancaster Infirmary ED are shown in **Table 1**. Most ED attendances were self-referrals (n=9,342; 65%). Just less than one-fifth (n=2,818; 19%) had their referral method recorded as other and 13% (n=1,869) were referred by the emergency services.

Table 2 details the injury group of ED attendances. The majority (n=11,145; 77%) of injury attendances were recorded as other injury. Sports injury accounted for 12% of attendances (n=1,789) and 7% were road traffic collisions (RTC) (n=1,043). Two per cent (n=325) of all injury attendances were assaults and 1% (n=173) were deliberate self-harm (DSH).

The incident location for attendances to Royal Lancaster Infirmary ED is displayed in **Table 3**. Over a third (n=4,955; 34%) of incidents occurred in a public place and over three in ten happened in the home (n=4,586; 32%). Just over one-fifth (n=2,976;

21%) were reported to have taken place in other location.

Table 4 illustrates the discharge destination for all injury attendances between April 2012 and March 2013. Over four in ten (n=6,315; 44%) attendees were discharged with no follow-up required. One-fifth (n=2,857; 20%) were discharged into the care of their GP and 14% (n=1,983) were referred to the fracture clinic. Nine per cent (n=1,289) were admitted to hospital and 6% (n=840) were referred to the out-patient clinic.

Assault attendances

Between April 2012 and March 2013 there were 325 assault attendances to Royal Lancaster Infirmary ED. The month with the highest attendance was November with 35 attendances, compared to 18 each in April and February (**Figure 3**). There were more male than female assault attendees presenting at the ED (males=212; 65%).

Table 5 details the age group of assault attendances for each month. Just over half of all attendees were aged 15-29 years (n=165; 51%) and 36% were aged 30-59 years (n=118).

Table 6 shows the incident location for assault attendances to Royal Lancaster Infirmary ED. The primary incident location was in a public place (n=149; 46%), followed by other location (n=98; 30%).

The discharge destination for assault attendees are illustrated in **Table 7**. Half (n=162; 50%) of assault attendees were discharged with just over a quarter (n=86; 26%) requiring follow-up treatment. Nine per cent of assault attendees were admitted to hospital (n=30).

Figure 1: ED injury attendances by gender and month, April 2012 to March 2013

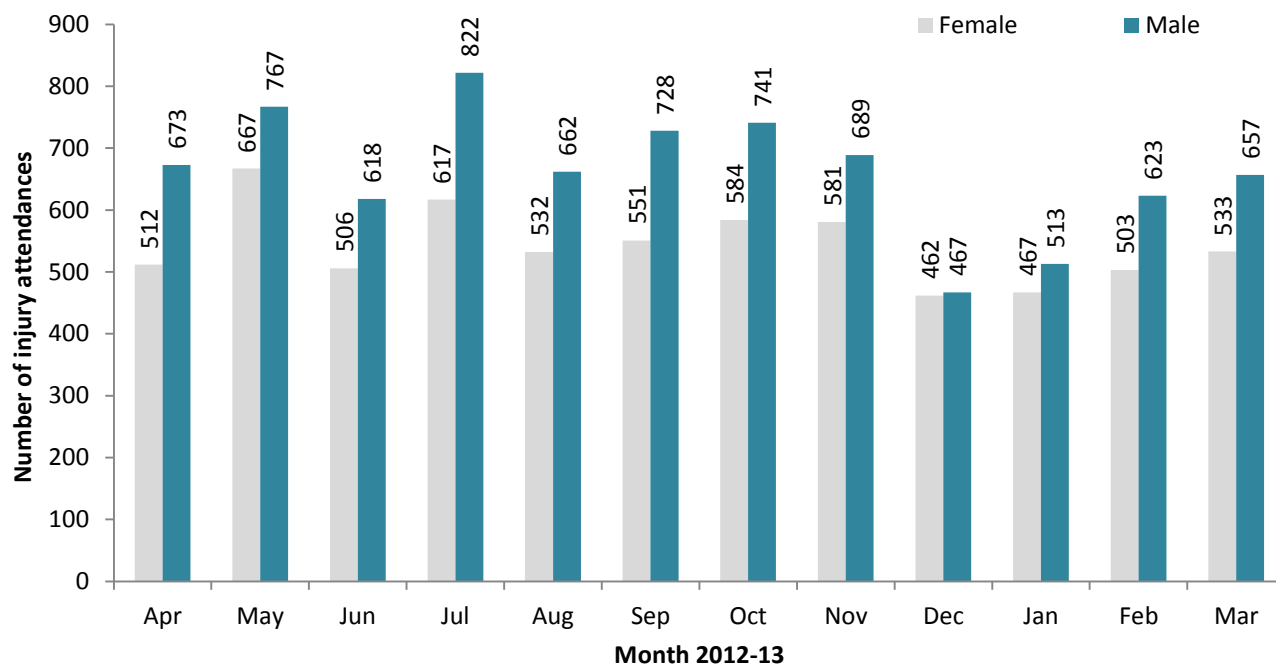


Figure 2: Age group of ED injury attendances by month, April 2012 to March 2013

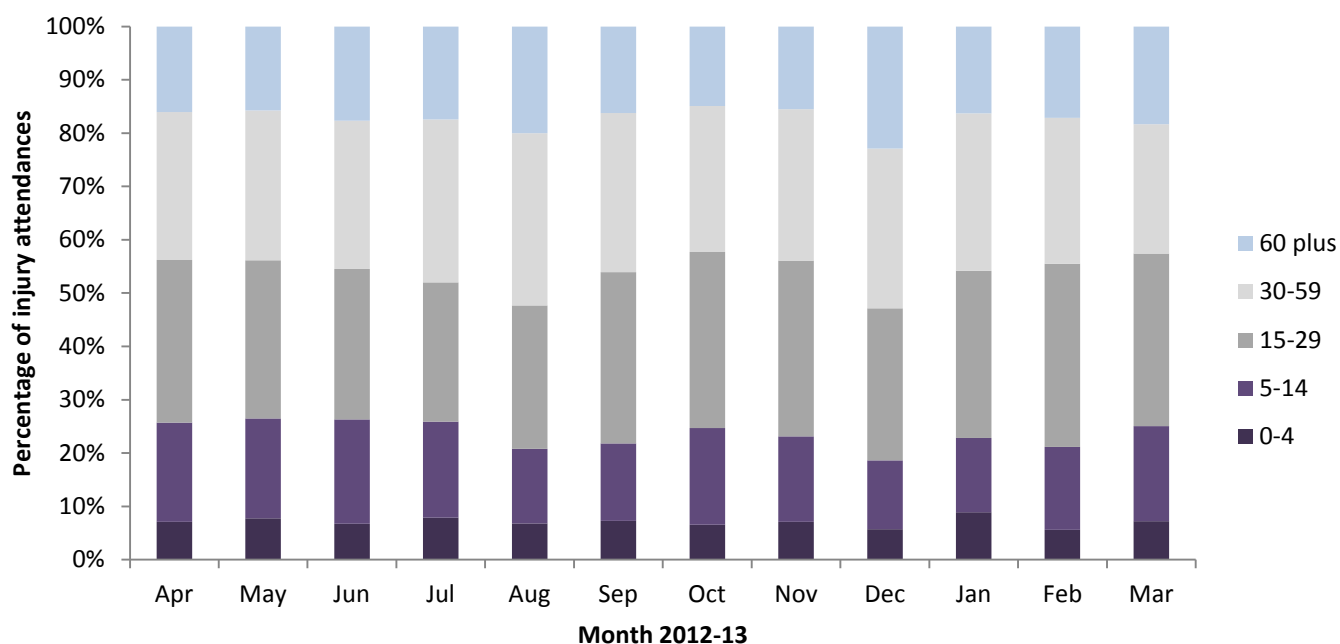


Table 1: ED injury attendances by source of referral and month, April 2012 to March 2013^{1,2}

Source of referral	Apr	May	Jun	Jul	Aug	Sep	Oct	Nov	Dec	Jan	Feb	Mar	Total	%
Self-referral	646	783	626	764	651	718	751	1006	703	811	908	975	9342	65
Other	365	448	358	422	323	364	351	60	25	19	45	38	2818	19
Emergency services	122	151	97	191	174	139	144	191	192	144	155	169	1869	13
Work	22	21	15	17	23	22	32	***	***	***	***	***	155	1
Educational establishment	17	20	15	19	***	17	29	***	***	***	5	***	124	1
GP	6	7	8	14	7	5	10	9	5	***	7	***	80	1
Police	<10	***	<6	<13	16	<15	<10	***	***	***	***	***	76	1
Health care provider: same or other	***	***	***	***	***	***	***	***	***	***	5	***	11	0
Total	1185	1434	1124	1439	1194	1279	1325	1270	929	980	1126	1190	14475	100

¹ Please note that all numbers less than five have been suppressed (with ***) in line with patient confidentiality and if there is only one number less than five in a category then two numbers will be suppressed to prevent back calculations from totals.

² GP = General Practitioner

Table 2: ED injury attendances by injury group and month, April 2012 to March 2013³

Injury group	Apr	May	Jun	Jul	Aug	Sep	Oct	Nov	Dec	Jan	Feb	Mar	Total	%
Other injury	905	1166	903	1154	946	947	973	952	739	749	827	884	11145	77
Sports injury	148	139	113	125	110	179	222	166	85	114	188	200	1789	12
RTC	99	86	74	99	91	99	81	101	67	89	89	68	1043	7
Assault	<20	<30	22	33	25	33	33	35	30	23	<20	29	325	2
DSH	***	***	12	28	22	21	16	16	8	5	***	9	173	1
Total	1185	1434	1124	1439	1194	1279	1325	1270	85	114	188	200	14475	100

1. Table 3: ED injury attendances by incident location and month, April 2012 to March 2013*

Location	Apr	May	Jun	Jul	Aug	Sep	Oct	Nov	Dec	Jan	Feb	Mar	Total	%
Public place	425	489	392	486	444	468	436	403	344	335	395	338	4955	34
Home	369	455	322	424	407	391	382	413	339	345	332	407	4586	32
Other	248	304	272	370	258	238	298	238	128	155	217	250	2976	21
Workplace	<100	103	71	100	<85	101	104	102	65	67	88	87	1066	7
Educational establishment	<50	83	67	58	***	81	104	114	53	78	94	108	890	6
Total	1185	1434	1124	1439	1194	1279	1325	1270	929	980	1126	1190	14475	100

*There were two attendances where location was unknown; these have been included in the total.

Table 4: ED injury attendances by discharge destination and month, April 2012 to March 2013

Discharge destination	Apr	May	Jun	Jul	Aug	Sep	Oct	Nov	Dec	Jan	Feb	Mar	Total	%
Discharged - no follow-up	661	838	559	747	593	700	746	627	472	92	154	126	6315	44
Discharge - follow up care by GP	86	63	94	136	144	148	155	151	124	550	542	664	2857	20
Fracture clinic	211	261	241	247	204	202	202	227	137	20	16	15	1983	14
Admitted	91	114	102	155	112	107	108	124	101	81	109	85	1289	9
Out-patient clinic	23	36	21	33	29	26	29	28	26	165	228	196	840	6
Left - before being treated	51	52	53	45	46	34	24	40	24	14	22	27	432	3
ED clinic	31	42	20	32	22	21	19	18	15	29	27	44	320	2
Other health care professional	17	14	21	17	22	22	29	19	17	14	17	15	224	2
Other	7	***	***	18	14	11	5	16	***	***	***	***	84	1
Transferred to other health care provider	***	***	***	***	***	***	***	8	5	8	10	9	63	0
Left - refused treatment	***	7	7	6	5	***	***	8	5	***	***	6	58	0
Unknown	***	***	***	***	***	***	***	***	***	***	***	***	7	0
Died in department	***	***	***	***	***	***	***	***	***	***	***	***	***	0
Restored to ward	***	***	***	***	***	***	***	***	***	***	***	***	***	0
Total	1185	1434	1124	1439	1194	1279	1325	1270	929	980	1126	1190	14475	100

Assaults

Table 5: ED assault attendances by age group and month, April 2012 to March 2013**

Age group	Apr	May	Jun	Jul	Aug	Sep	Oct	Nov	Dec	Jan	Feb	Mar	Total	%
5-14	***	***	***	***	***	***	<10	***	***	***	***	***	29	9
15-29	8	14	13	15	12	16	15	18	19	10	7	18	165	51
30-59	8	11	8	10	12	13	11	13	9	11	6	6	118	36
60 plus	***	***	***	***	***	***	***	***	***	***	***	***	10	3
Total	18	26	22	33	25	33	33	35	30	23	18	29	325	100

**There were three attendances in the 0-4 age group; these have been included in the total.

³ Please note that all numbers less than five have been suppressed (with ***) in line with patient confidentiality and if there is only one number less than five in a category then two numbers will be suppressed to prevent back calculations from totals.

Figure 3: Number of ED assault attendances by gender and month, April 2012 to March 2013⁴

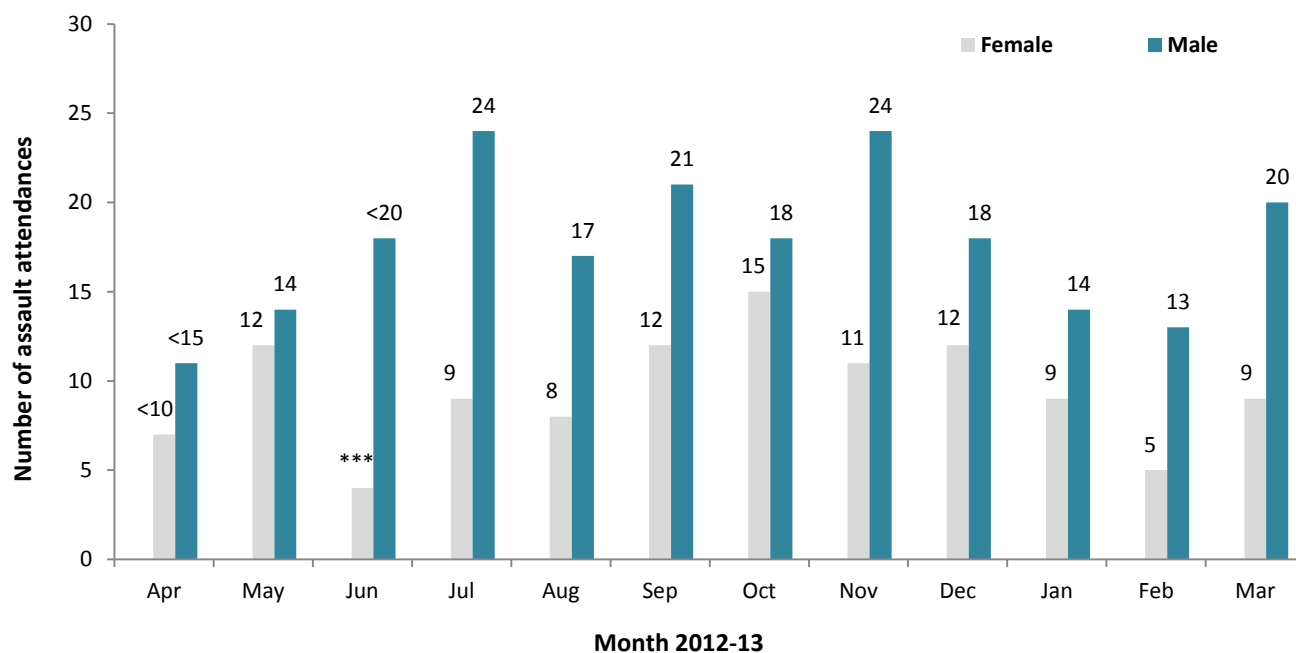


Table 6: ED assault attendances by incident location and month, April 2012 to March 2013

Location	Apr	May	Jun	Jul	Aug	Sep	Oct	Nov	Dec	Jan	Feb	Mar	Total	%
Public place	5	13	15	21	6	13	14	21	18	6	5	12	149	46
Other	7	***	***	10	12	16	11	6	6	7	8	8	98	30
Home	***	8	***	***	7	***	5	6	***	8	***	***	55	17
Workplace	***	***	***	***	***	***	***	***	***	***	***	***	16	5
Educational establishment	***	***	***	***	***	***	***	***	***	***	***	***	7	2
Total	18	26	22	33	25	33	33	35	30	23	18	29	325	100

Table 7: ED assault attendances by discharge destination and month, April 2012 to March 2013[^]

Disposal	Apr	May	Jun	Jul	Aug	Sep	Oct	Nov	Dec	Jan	Feb	Mar	Total	%
Discharged	10	15	10	14	13	16	21	11	15	11	9	17	162	50
Follow-up	7	7	10	8	***	<10	<10	<15	9	6	5	5	86	26
Other	***	***	***	5	7	***	6	7	***	***	***	***	46	14
Admitted	***	***	***	6	***	6	***	***	***	***	***	***	30	9
Total	18	26	22	33	25	33	33	35	30	23	18	29	325	100

[^] There was one attendance where the discharge destination was unknown; this has been included in the total.

Published July 2013

Karen Swarbrick (TIIG Researcher/Analyst)

Centre for Public Health, Liverpool John Moores University, 2nd Floor, Henry Cotton Building, Liverpool, L3 2ET

Tel: 0151 231 4498 Email: K.A.Swarbrick@ljmu.ac.uk

Website: www.tiig.info (please note data requests should be made through the website)

⁴ Please note that all numbers less than five have been suppressed (with ***) in line with patient confidentiality and if there is only one number less than five in a category then two numbers will be suppressed to prevent back calculations from totals.