

Royal Lancaster Infirmary Emergency Department

Monthly Bulletin: January to December 2012

This bulletin provides a breakdown of all injury attendances at Royal Lancaster Infirmary Emergency Department (ED) between January and December 2012.

Between January and December 2012 there were 14,715 injury attendances to Royal Lancaster Infirmary ED. The month with the highest attendance was July with 1,439 attendances (**Figure 1**). There were more male than female attendances presenting at Royal Lancaster Infirmary ED (males=8,117; 55%).

Figure 2 illustrates age group of ED attendances for each month. The majority of ED attendances were aged 15-29 (n=4,508; 31%) and 30-59 years (n=4,262; 29%).

The referral source of injury attendances to the Royal Lancaster Infirmary ED are shown in **Table 1**. Most ED attendances self-referred (59%), 25% had their referral method recorded as other and 12% were referred by the emergency services.

Table 2 details the injury group of ED attendances. For the majority (77%) of attendances, injury group was recorded as other injury. Sports injury accounted for 12% of attendances, 7% were road traffic collisions (RTC) and 2% were assaults.

Table 3 shows the location of incident for injury attendances; over three in ten incident locations were recorded in a public place (35%) and in the

home (31%). This was followed by other location (21%).

Table 4 illustrates the discharge destination for patients attending Royal Lancaster Infirmary ED. Over five in ten (54%) of attendances were discharged, 17% were referred to the fracture clinic, 9% were discharged into the care of their GP and 9% were admitted to hospital.

Assault attendances

Between January and December 2012 there were 335 assault attendances to Royal Lancaster Infirmary ED. The month with the highest attendance was March with 40 attendances (**Figure 3**). There were more male than female assault attendances presenting at Royal Lancaster Infirmary ED (males=226; 67%).

Table 5 shows age group of assault attendances for each month. The majority of ED assault attendances were aged 15-29 years (n=178; 53%) and 36% were aged 30-59 years (n=120).

Table 6 illustrates the location of incident for assault attendances to Royal Lancaster Infirmary ED. The primary incident location for assault attendances was public place (51%), followed by other (27%).

Table 7 shows the discharge destination for assault attendees. Almost half (48%) of assault attendances were discharged. Almost three in ten (28%) required follow-up treatment, while nearly one in ten (9%) were admitted to hospital.

Figure 1: ED injury attendances by gender and month, January to December 2012

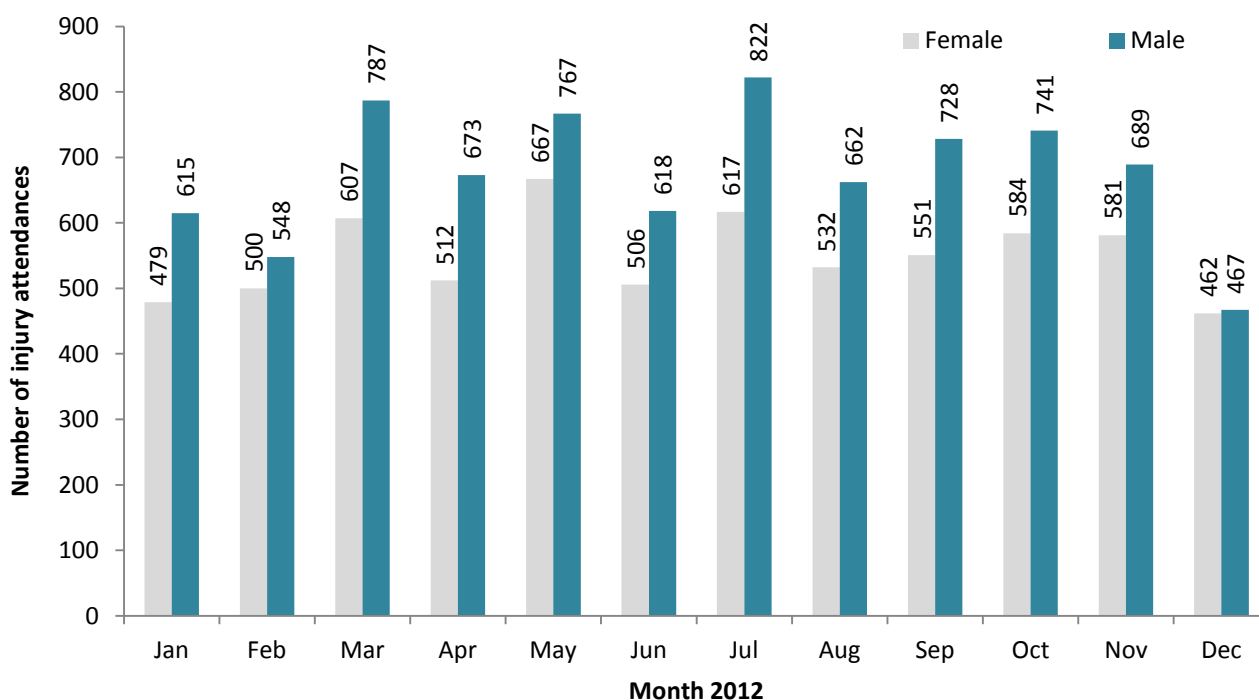


Figure 2: Age group of ED injury attendances by month, January to December 2012

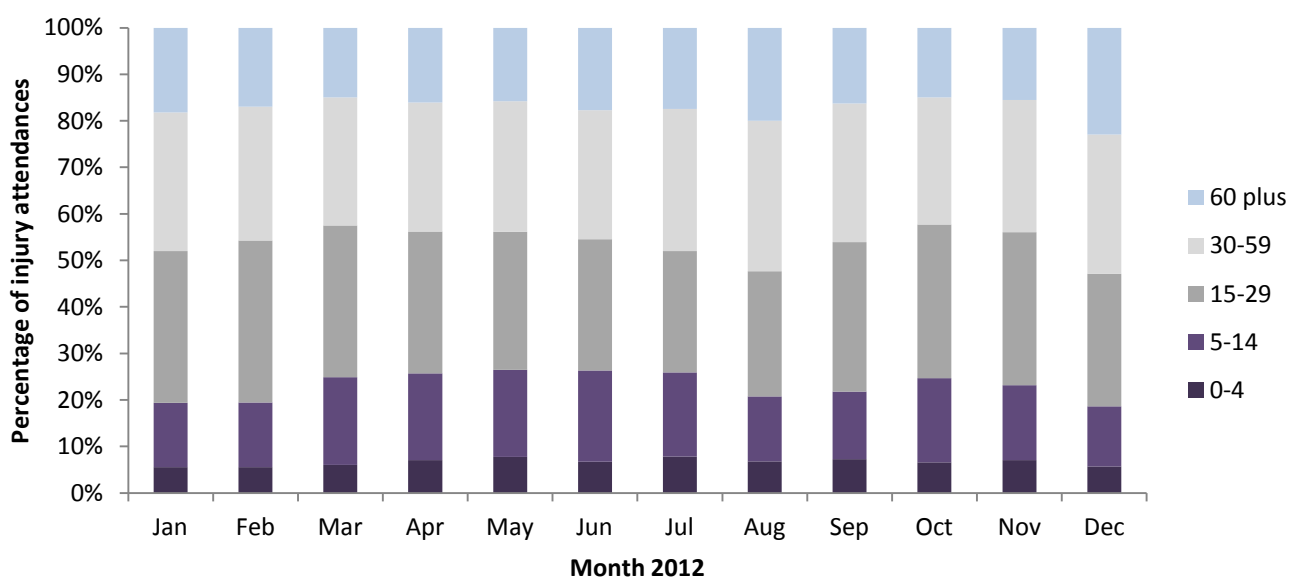


Table 1: ED injury attendances by source of referral and month, January to December 2012^{1,2}

Source of referral	Jan	Feb	Mar	Apr	May	Jun	Jul	Aug	Sep	Oct	Nov	Dec	Total	%
Self referral	624	642	777	646	783	626	764	651	718	751	1006	703	8691	59
Other	306	274	404	365	448	358	422	323	364	351	60	25	3700	25
Emergency services	114	98	139	122	151	97	191	174	139	144	191	192	1752	12
Work	18	16	22	22	21	15	17	23	22	32	***	***	210	1
Educational establishment	17	11	38	17	20	15	19	***	17	29	***	***	184	1
GP	11	5	8	6	7	8	14	7	5	10	9	5	95	1
Police	***	***	<7	<8	***	<6	<13	<17	<15	<9	***	***	<83	1
Health care provider: same or other	***	***	***	***	***	***	***	***	***	***	***	***	***	0
Total	1094	1048	1394	1185	1434	1124	1439	1194	1279	1325	1270	929	14715	100

¹Please note that all numbers less than five have been suppressed (with ***) in line with patient confidentiality and if there is only one number less than five in a category then two numbers will be suppressed to prevent back calculations from totals.

² GP=general practitioner.

Table 2: ED injury attendances by injury group and month, January to December 2012³

Injury group	Jan	Feb	Mar	Apr	May	Jun	Jul	Aug	Sep	Oct	Nov	Dec	Total	%
Other injury	831	791	1009	905	1166	903	1154	946	947	973	952	739	11316	77
Sports injury	140	157	245	148	139	113	125	110	179	222	166	85	1829	12
RTC	96	73	90	<100	<87	74	99	91	99	81	101	67	1056	7
Assault	19	21	40	18	26	22	33	25	33	33	35	30	335	2
Deliberate self-harm	8	6	10	***	***	12	28	22	21	16	16	8	179	1
Total	1094	1048	1394	1185	1434	1124	1439	1194	1279	1325	1270	929	14715	100

Table 3: ED injury attendances by incident location and month, January to December 2012*

Location	Jan	Feb	Mar	Apr	May	Jun	Jul	Aug	Sep	Oct	Nov	Dec	Total	%
Public place	341	421	442	425	489	392	486	444	468	436	403	344	5091	35
Home	393	313	400	369	455	322	424	407	391	382	413	339	4608	31
Other	200	166	313	248	304	272	370	258	238	298	238	128	3033	21
Workplace	74	81	105	96	103	71	100	<83	101	104	102	<66	1084	7
Educational establishment	86	67	133	47	83	67	58	***	81	104	114	<54	896	6
Total	1094	1048	1394	1185	1434	1124	1439	1194	1279	1325	1270	929	14715	100

*There were three attendances where location was unknown; these have been included in the total.

Table 4: ED injury attendances by discharge destination and month, January to December 2012

Discharge destination	Jan	Feb	Mar	Apr	May	Jun	Jul	Aug	Sep	Oct	Nov	Dec	Total	%
Discharged - no follow-up	638	577	790	661	838	559	747	593	700	746	627	472	7948	54
Fracture clinic	188	209	235	211	261	241	247	204	202	202	227	137	2564	17
Discharge – follow-up care by GP	80	80	92	86	63	94	136	144	148	155	151	124	1353	9
Admitted	87	83	110	91	114	102	155	112	107	108	124	101	1294	9
Left - before being treated	36	55	76	51	52	53	45	46	34	24	40	24	536	4
Out-patient clinic	32	17	28	23	36	21	33	29	26	29	28	26	328	2
ED clinic	13	9	30	31	42	20	32	22	21	19	18	15	272	2
Other health care professional	15	7	19	17	14	21	17	22	22	29	19	17	219	1
Other	***	***	5	7	***	***	18	14	11	5	16	***	87	1
Left - refused treatment	***	5	7	***	7	7	6	5	***	***	8	5	62	0
Transferred to other health care provider	***	***	***	***	***	***	***	***	***	***	8	5	44	0
Unknown	***	***	***	***	***	***	***	***	***	***	***	***	***	0
Died in department	***	***	***	***	***	***	***	***	***	***	***	***	***	0
Restored to ward	***	***	***	***	***	***	***	***	***	***	***	***	***	0
Total	1094	1048	1394	1185	1434	1124	1439	1194	1279	1325	1270	929	14715	100

Assaults

Table 5: ED assault attendances by age group and month, January to December 2012**

Age group	Jan	Feb	Mar	Apr	May	Jun	Jul	Aug	Sep	Oct	Nov	Dec	Total	%
5-14	***	***	***	***	***	***	***	***	***	<7	***	***	26	8
15-29	9	16	23	8	14	13	15	12	16	15	18	19	178	53
30-59	<8	***	14	8	11	8	10	12	13	11	13	9	120	36
60 plus	***	***	***	***	***	***	***	***	***	***	***	***	8	2
Total	<20	<22	40	18	26	<23	33	25	33	33	35	30	335	100

**There were three attendances in the 0-4 age group; these have been included in the total.

³ Please note percentages might not add to one hundred due to rounding.

Figure 3: Number of ED assault attendances by gender and month, January to December 2012

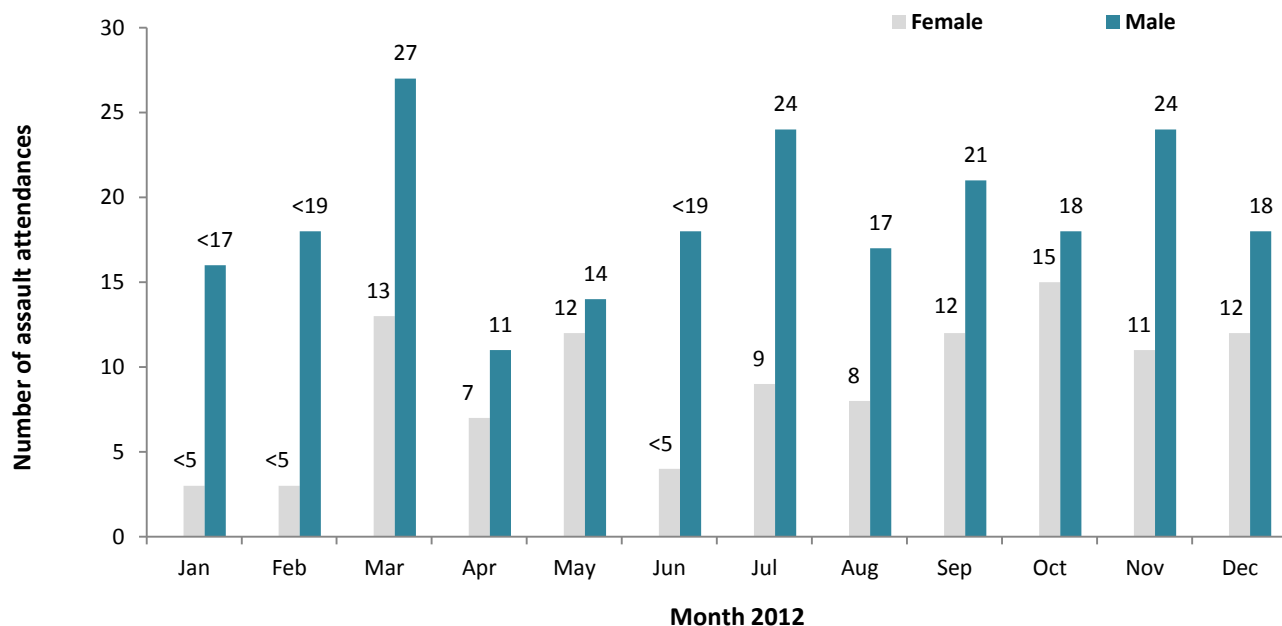


Table 6: ED assault attendances by incident location and month, January to December 2012

Location	Jan	Feb	Mar	Apr	May	Jun	Jul	Aug	Sep	Oct	Nov	Dec	Total	%
Public place	7	15	22	5	13	15	21	6	13	14	21	18	170	51
Other	5	***	9	7	***	***	10	12	16	11	6	6	92	27
Home	6	***	***	***	8	***	***	7	***	5	6	***	53	16
Workplace	***	***	***	***	***	***	***	***	***	***	***	***	15	4
Educational establishment	***	***	***	***	***	***	***	***	***	***	***	***	5	1
Total	<20	<22	40	18	26	<23	33	25	33	33	35	30	335	100

Table 7: ED assault attendances by discharge destination and month, January to December 2012

Disposal	Jan	Feb	Mar	Apr	May	Jun	Jul	Aug	Sep	Oct	Nov	Dec	Total	%
Discharged	8	9	20	10	15	10	14	13	16	21	11	15	162	48
Follow-up	7	7	9	7	7	10	8	***	7	<6	13	9	93	28
Other	***	***	<9	***	***	***	5	7	***	6	<8	***	49	15
Admitted	***	***	***	***	***	***	6	***	<7	***	***	***	31	9
Total	<20	<22	40	18	26	<23	33	25	33	33	35	30	335	100

Published March 2013

Johnathan Rooney (TIIG Officer)

Centre for Public Health, Liverpool John Moores University, 2nd Floor, Henry Cotton Campus, Liverpool, L3 2ET

Tel: 0151 231 4539 Email: j.rooney@ljmu.ac.uk

Website: www.tiig.info (please note data requests should be made through the website)