

This bulletin provides a breakdown of all trauma<sup>1</sup> attendances at Ormskirk Paediatric Accident and Emergency (A&E) department and Minor Injury Unit between April 2006 and March 2007.

Figure 1 illustrates the number of trauma attendances by month of attendance. Trauma attendance peaked in June, with December having the least number of trauma attendances.

**Figure 1: Total number of trauma attendances by month, April 2006 to March 2007**

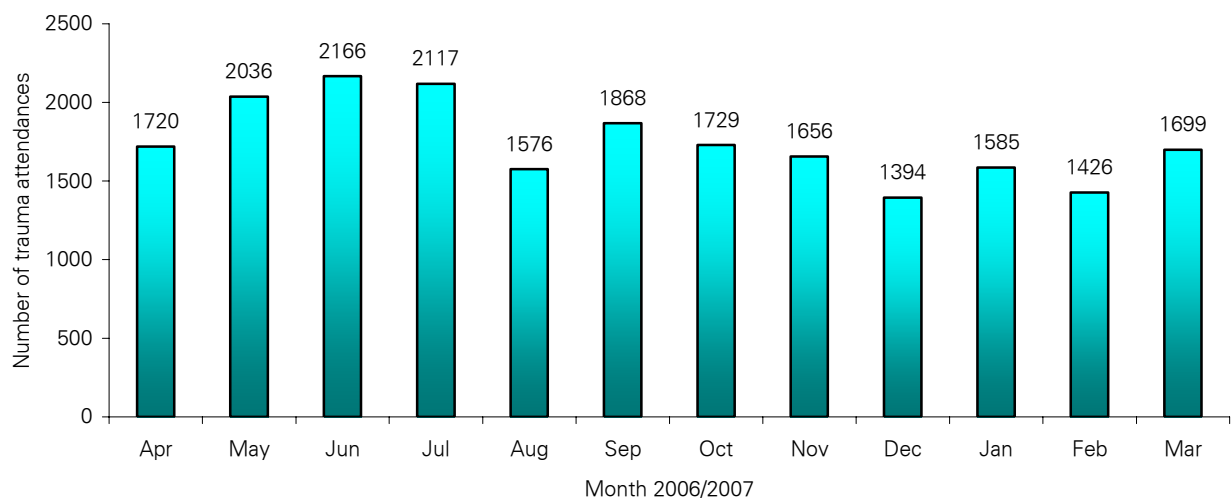
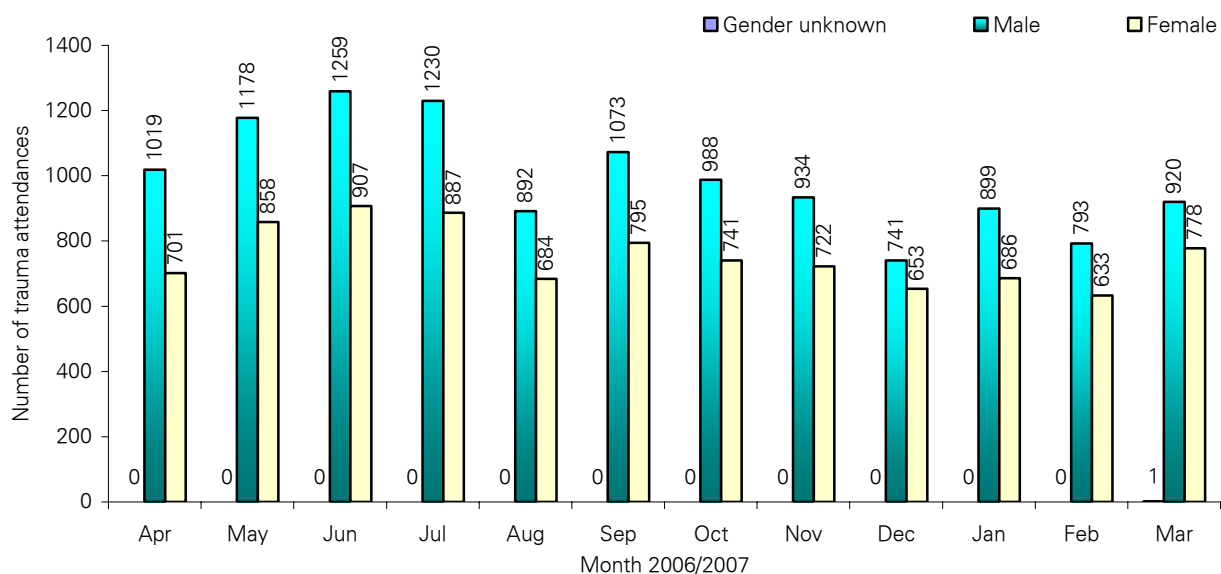


Figure 2 illustrates trauma attendances by gender. For all months there were more male trauma attendances than female presenting at Ormskirk Paediatric A&E department and Minor Injury Unit.

**Figure 2: Gender of trauma attendances by month, April 2006 to March 2007**



<sup>1</sup>Trauma refers to all A&E attendances presenting as a result of an accident or intentional/unintentional injury.

Figure 3 presents the age group of trauma attendances. Across the whole year nearly half of trauma attendances were made by people under the age of 15 years.

**Figure 3: Age group of trauma attendances by month, April 2006 to March 2007**

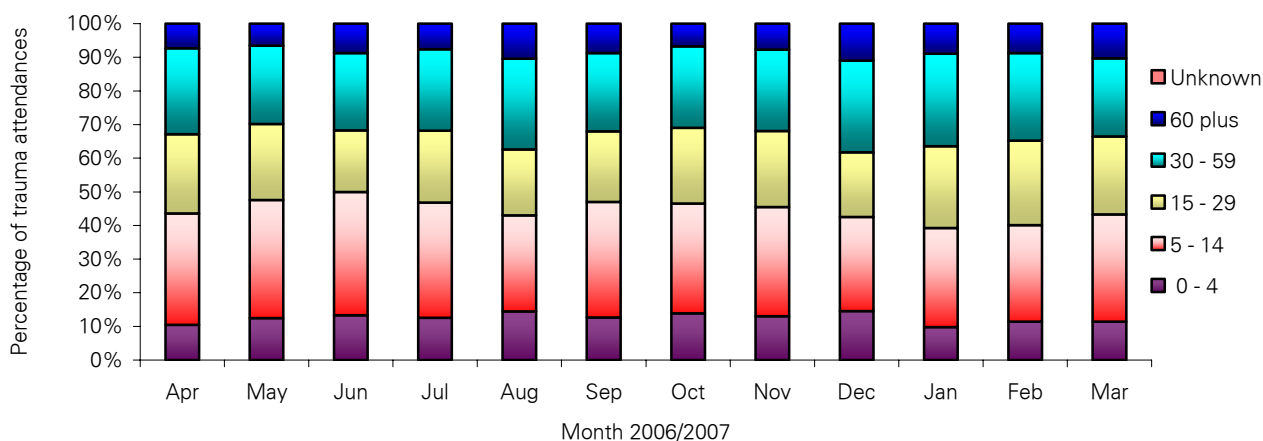


Table 1 details the injury group of trauma attendances. The most common cause of injury was by 'other' accident (89%); of those attendances where an injury group was specified 44% were sports injuries and 39% were road traffic accidents.

**Table 1: Trauma attendances by injury group, April 2006 to March 2007**

Injury Group	Apr	May	Jun	Jul	Aug	Sep	Oct	Nov	Dec	Jan	Feb	Mar	Total	%
Other accident	1499	1803	1951	1916	1402	1659	1562	1460	1242	1409	1257	1527	18687	89
Sports injury	113	109	98	90	80	109	75	76	39	80	84	61	1014	5
Road traffic accident	81	76	84	72	74	73	61	84	89	68	44	74	880	4
Assault	22	43	31	27	18	25	24	24	22	23	25	32	316	2
Deliberate self-harm	5	5	2	12	2	2	6	5	1	5	16	5	66	0
Firework injury	0	0	0	0	0	0	1	7	1	0	0	0	9	0
<b>Total</b>	<b>1720</b>	<b>2036</b>	<b>2166</b>	<b>2117</b>	<b>1576</b>	<b>1868</b>	<b>1729</b>	<b>1656</b>	<b>1394</b>	<b>1585</b>	<b>1426</b>	<b>1699</b>	<b>20972</b>	<b>100</b>

Table 2 illustrates the source of referral for patients presenting with trauma injuries. The primary source of referral for trauma attendances identified was self referral (42%).

**Table 2: Trauma attendances by source of referral, April 2006 to March 2007**

Source of Referral	Apr	May	Jun	Jul	Aug	Sep	Oct	Nov	Dec	Jan	Feb	Mar	Total	%
Other	788	1047	1118	1045	668	959	827	730	569	698	580	790	9819	47
Self referral	681	766	781	847	686	753	752	754	642	708	671	705	8746	42
Health care provider	193	163	190	168	152	116	105	125	125	141	126	147	1751	8
Emergency services	31	14	16	24	32	22	18	20	19	15	13	10	234	1
General Medical Practitioner	17	16	17	16	21	8	11	13	17	11	17	18	182	1
Educational establishment	3	17	19	7	0	5	11	9	16	6	14	28	135	1
Work	5	8	22	8	11	5	3	5	2	4	4	0	77	0
Police	2	3	3	1	6	0	2	0	2	1	0	1	21	0
LA* social services	0	2	0	1	0	0	0	0	2	1	1	0	7	0
Unknown	0	0	0	0	0	0	0	0	0	0	0	0	0	0
<b>Total</b>	<b>1720</b>	<b>2036</b>	<b>2166</b>	<b>2117</b>	<b>1576</b>	<b>1868</b>	<b>1729</b>	<b>1656</b>	<b>1394</b>	<b>1585</b>	<b>1426</b>	<b>1699</b>	<b>20972</b>	<b>100</b>

\*Local Authority

Table 3 presents trauma attendances by location of incident. Four in ten (41%) of all trauma injuries occurred in the home, 32% in a public place and 12% in an educational establishment.

**Table 3: Trauma attendances by location of incident, April 2006 to March 2007**

Location	Apr	May	Jun	Jul	Aug	Sep	Oct	Nov	Dec	Jan	Feb	Mar	Total	%
Home	694	804	873	892	691	757	734	690	631	643	532	715	8656	41
Public place	641	696	702	723	583	637	506	461	415	502	472	476	6814	32
Educational establishment	130	260	245	172	7	214	224	276	164	245	195	281	2413	12
Other	124	146	178	175	183	126	123	89	91	82	106	130	1553	7
Work	131	130	168	155	112	134	142	140	93	113	121	97	1536	7
Total	1720	2036	2166	2117	1576	1868	1729	1656	1394	1585	1426	1699	20972	100

Table 4 shows the disposal method of trauma attendances; over half (57%) of attendees were discharged requiring no follow up.

**Table 4: Disposal method of all trauma attendees, April 2006 to March 2007**

Disposal	Apr	May	Jun	Jul	Aug	Sep	Oct	Nov	Dec	Jan	Feb	Mar	Total	%
Discharged – no follow up	973	1124	1221	1274	884	1070	1005	1002	821	922	774	877	11947	57
Referred to other health care professional	272	323	392	366	335	363	314	316	285	325	313	416	4020	19
Referred to Fracture Clinic	183	234	228	229	170	224	205	152	108	165	157	193	2248	11
Discharged - follow up	128	180	166	89	58	76	77	59	67	59	53	93	1105	5
Transferred to other health care provider	56	50	49	57	43	46	41	42	38	36	49	36	543	3
Admitted to hospital	35	41	33	52	29	37	36	32	34	19	33	33	414	2
Referred to A&E Clinic	36	38	41	14	23	24	14	24	17	25	14	11	281	1
Left before being treated	19	30	19	20	12	17	9	9	12	11	14	23	195	1
Referred to other Out-Patient Clinic	17	9	11	16	20	8	27	19	12	21	16	11	187	1
Other	1	5	5	0	0	3	1	1	0	0	3	6	25	0
Left having refused treatment	0	2	1	0	2	0	0	0	0	1	0	0	6	0
Died in department	0	0	0	0	0	0	0	0	0	1	0	0	1	0
Total	1720	2036	2166	2117	1576	1868	1729	1656	1394	1585	1426	1699	20972	100

Figure 4 shows the crude rate of trauma attendances to Ormskirk Paediatric A&E department and Minor Injury Unit per 1000 population by Middle Super Output Area (MSOA), these areas have then been split into quintiles, running from those with the lowest crude rate (1) to the highest crude rate (5). Figure 5 shows the same information but in crude rate format only. Table 5 shows the five MSOAs with the highest crude rate of trauma attendances per 1000 population. The North/North West Ormskirk area had the highest crude rate, with 150 attendances per 1000 population during 06/07.

**Table 5: Top five Middle Super Output Areas of residence of all trauma attendances at Ormskirk Paediatric Accident and Emergency department and Minor Injury Unit, crude rate per 1,000 population, April 2006 to March 2007**

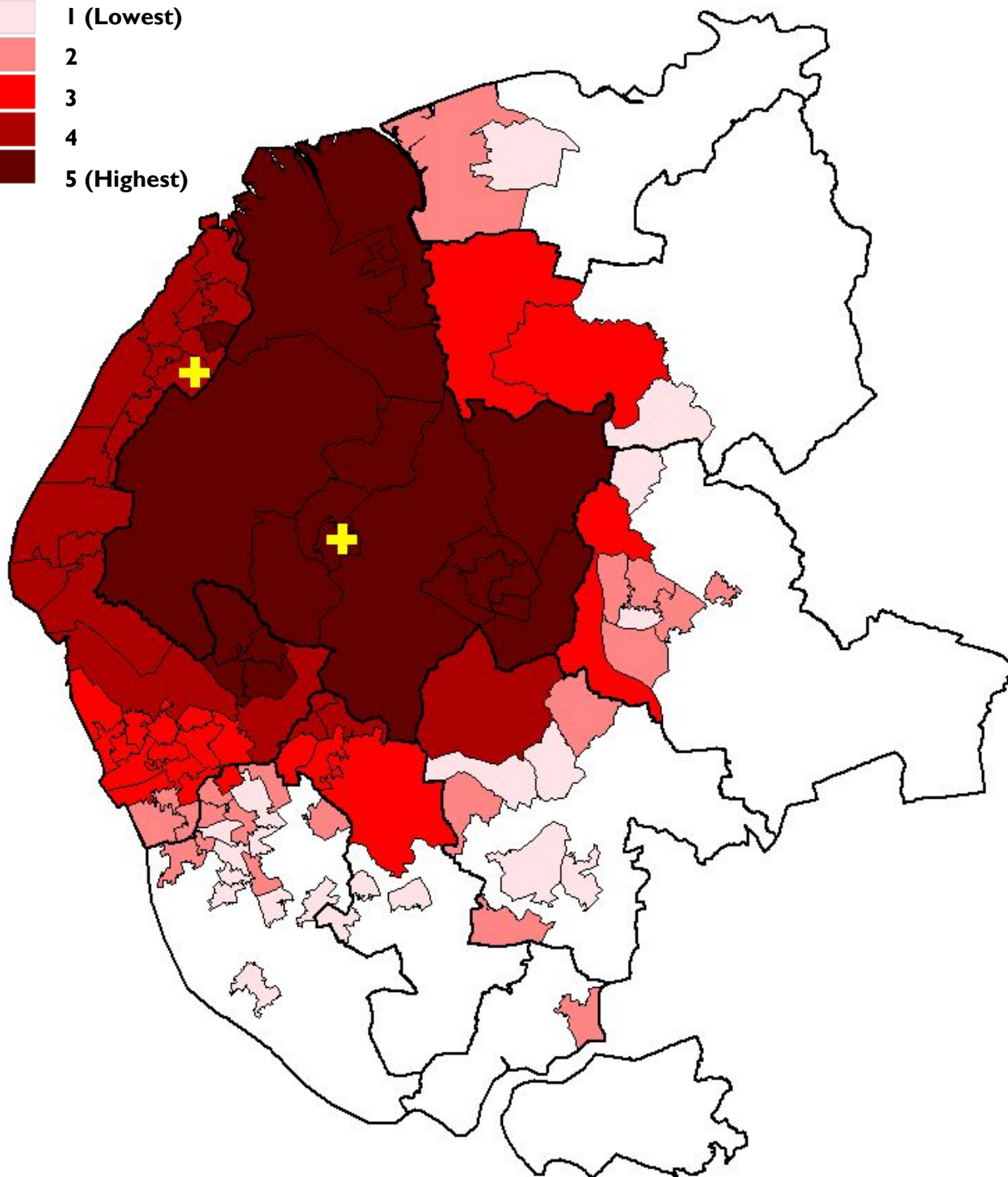
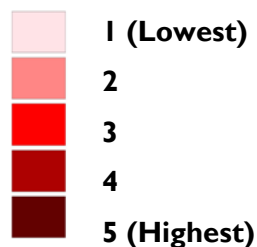
MSOA Code	General area	Crude Rate/1000
E02005309	North/North West Ormskirk	150
E02005310	Central/South Ormskirk	149
E02005317	Digmoor	144
E02005307	Burscough	143
E02005313	Skelmersdale Town Centre/Birch Green	136

\* Percentages may not add up to one hundred due to rounding.

**Figure 4: Middle Super Output Area of residence of all trauma attendances at Ormskirk Paediatric Accident and Emergency department and Minor Injury Unit, quintile's of crude rate per 1,000 population, April 2006 to March 2007 (Populations: MSAO mid Year 2004)**

 Accident & Emergency Department

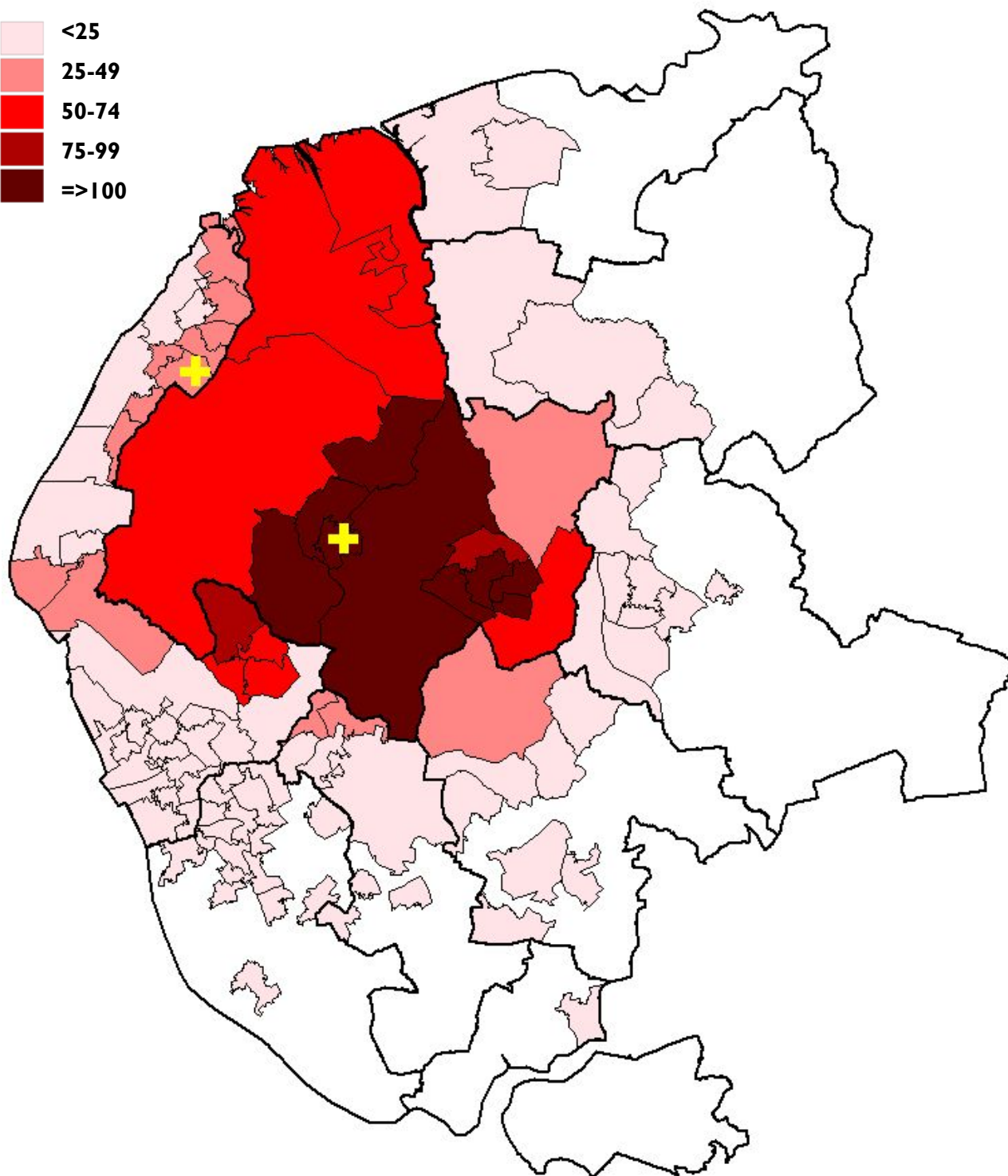
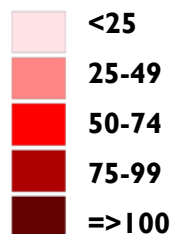
Quintile's of crude rate of trauma attendances per 1000 population



**Figure 5: Middle Super Output Area of residence of all trauma attendances at Ormskirk Paediatric Accident and Emergency department and Minor Injury Unit, crude rate per 1,000 population, April 2006 to March 2007** (Populations: MSAO mid Year 2004)

**+** Accident & Emergency Department

Crude rate of trauma attendances per 1000 population



Published February 2007

Dan Hungerford (TIIG Analyst) and Zara Anderson (TIIG Project Lead)  
Centre for Public Health, Faculty of Health and Applied Social Sciences, Liverpool John Moores University  
Castle House, North Street, Liverpool, L3 2AY  
Tel: 0151 231 4417/4505

Email: [d.j.hungerford@ljmu.ac.uk](mailto:d.j.hungerford@ljmu.ac.uk) or [z.a.anderson@ljmu.ac.uk](mailto:z.a.anderson@ljmu.ac.uk)

Website: [www.nwpho.org.uk/ajt](http://www.nwpho.org.uk/ajt)