

This bulletin provides a breakdown of all trauma<sup>1</sup> attendances at Ormskirk Paediatric Accident and Emergency (A&E) department and Minor Injury Unit between April 2007 and March 2008.

Figure 1 illustrates the number of trauma attendances by month of attendance. Trauma attendance peaked in April, with December having the least number of trauma attendances.

**Figure 1: Total number of trauma attendances by month, April 2007 to March 2008**

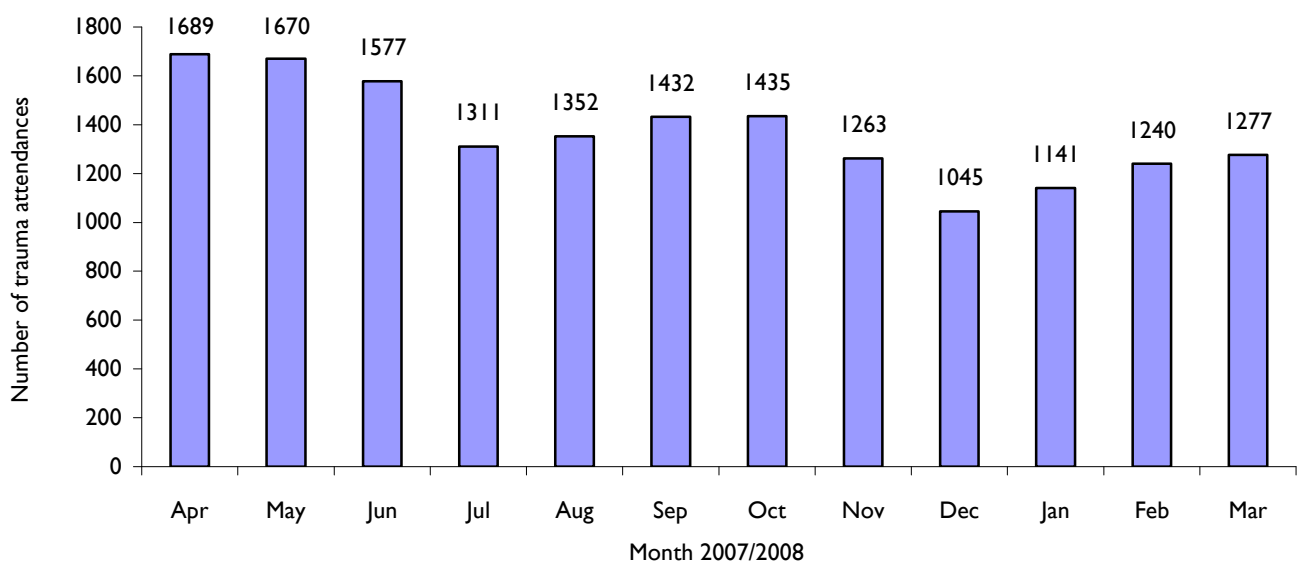
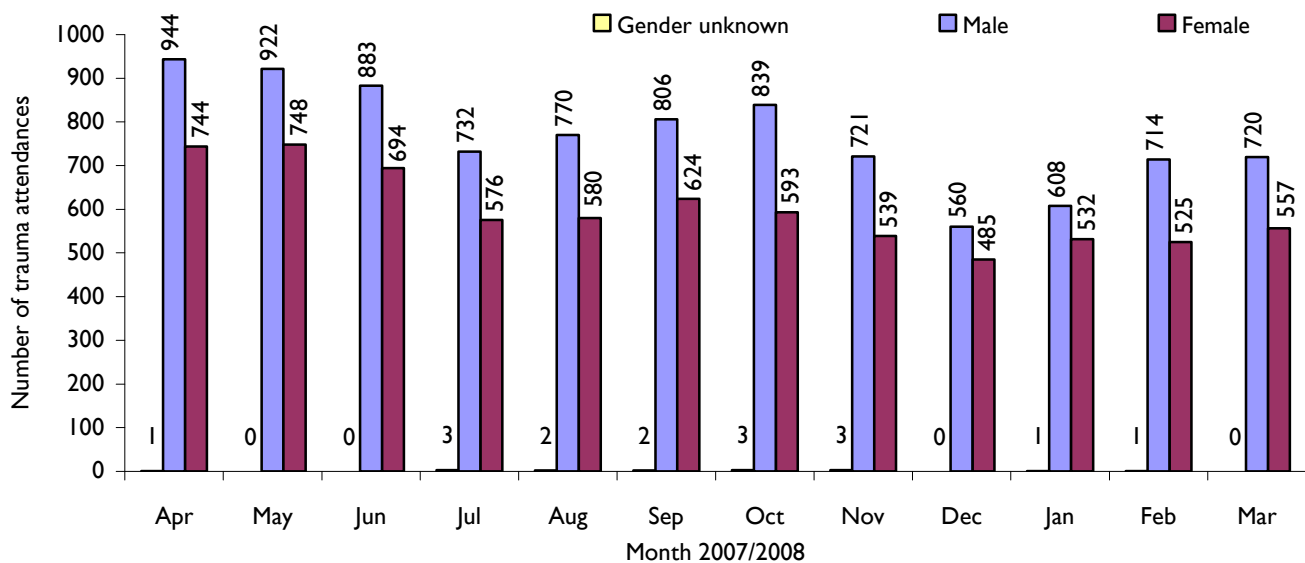


Figure 2 illustrates trauma attendances by gender. For all months there were more male trauma attendances than female presenting at Ormskirk Paediatric A&E department and Minor Injury Unit.

**Figure 2: Gender of trauma attendances by month, April 2007 to March 2008**



<sup>1</sup>Trauma refers to all A&E attendances presenting as a result of an intentional or unintentional injury.

Figure 3 presents the age group of trauma attendances. Across the whole year four in ten trauma attendances were made by people under the age of 15 years.

**Figure 3: Age group of trauma attendances by month, April 2007 to March 2008**

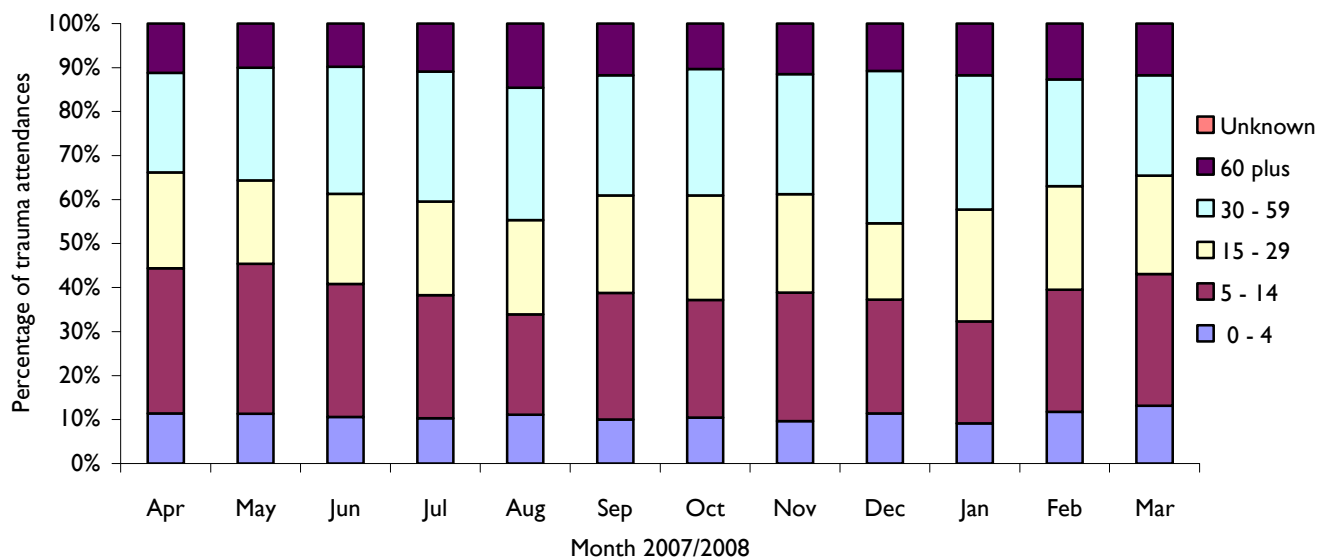


Table 1 details the injury group of trauma attendances. The most common cause of injury was by 'other' accident (89%). Of those attendances where an injury group was specified 45% were sports injuries and 43% were road traffic accidents.

**Table 1: Trauma attendances by injury group, April 2007 to March 2008**

Injury group	Apr	May	Jun	Jul	Aug	Sep	Oct	Nov	Dec	Jan	Feb	Mar	Total	%
Other accident	1546	1535	1412	1148	1209	1228	1263	1105	913	1001	1083	1165	14608	89
Sports injury	49	47	68	41	55	106	94	85	40	68	101	62	816	5
Road traffic accident	69	63	74	101	70	74	59	58	73	58	39	42	780	5
Assault	25	21	17	17	13	22	14	12	7	8	13	8	177	1
Deliberate self-harm	0	4	6	4	5	2	5	3	12	6	4	0	51	0
Firework injury	0	0	0	0	0	0	0	0	0	0	0	0	0	0
Total	1689	1670	1577	1311	1352	1432	1435	1263	1045	1141	1240	1277	16432	100

Table 2 illustrates the source of referral for patients presenting with trauma injuries. The primary source of referral for trauma attendances identified was self referral (46%).

**Table 2: Trauma attendances by source of referral, April 2007 to March 2008**

Source of referral	Apr	May	Jun	Jul	Aug	Sep	Oct	Nov	Dec	Jan	Feb	Mar	Total	%
Self referral	659	676	709	638	725	659	683	609	540	590	557	518	7563	46
Other	770	730	667	532	480	591	570	510	392	444	516	598	6800	41
Health care provider	199	186	172	124	119	153	161	120	93	91	148	140	1706	10
Educational establishment	23	58	10	2	0	6	5	11	7	4	4	0	130	1
Emergency services	20	11	12	6	20	9	6	4	3	5	5	9	110	1
General Medical Practitioner	8	8	5	6	5	14	5	8	8	4	4	10	85	1
Police	7	0	2	1	1	0	0	1	1	2	2	2	19	0
Work	3	1	0	1	0	0	3	0	1	0	4	0	13	0
Unknown	0	0	0	1	2	0	2	0	0	1	0	0	6	0
Local Authority social services	0	0	0	0	0	0	0	0	0	0	0	0	0	0
Total	1689	1670	1577	1311	1352	1432	1435	1263	1045	1141	1240	1277	16432	100

Table 3 presents trauma attendances by location of incident. Four in ten (44%) of all trauma injuries occurred in the home, 32% in a public place and 8% in an educational establishment.

**Table 3: Trauma attendances by location of incident, April 2007 to March 2008**

Location	Apr	May	Jun	Jul	Aug	Sep	Oct	Nov	Dec	Jan	Feb	Mar	Total	%
Home	745	771	711	570	606	581	571	558	451	514	551	614	7243	44
Public place	582	518	456	438	492	507	492	356	312	342	383	374	5252	32
Other	148	115	156	134	155	133	149	115	123	110	101	89	1528	9
Educational establishment	111	173	143	73	6	113	104	145	92	110	129	119	1318	8
Work	103	93	111	96	93	98	119	89	67	65	76	81	1091	7
Total	1689	1670	1577	1311	1352	1432	1435	1263	1045	1141	1240	1277	16432	100

Table 4 shows the disposal method of trauma attendances; over half (51%) of attendees were discharged requiring no follow up.

**Table 4: Disposal method of all trauma attendees, April 2007 to March 2008**

Disposal	Apr	May	Jun	Jul	Aug	Sep	Oct	Nov	Dec	Jan	Feb	Mar	Total	%
Discharged – no follow up	888	885	799	713	682	717	667	604	534	568	640	646	8343	51
Referred to other health care professional	387	351	370	300	361	351	403	325	290	311	294	325	4068	25
Referred to fracture clinic	204	219	213	148	134	181	185	177	123	133	140	148	2005	12
Discharged - follow up	87	80	72	65	76	76	95	92	46	75	74	60	898	5
Transferred to other health care provider	61	36	45	34	36	28	33	27	21	17	26	35	399	2
Admitted to hospital bed	28	62	37	15	26	36	16	16	10	14	28	26	314	2
Left department before being treated	18	13	16	12	13	22	21	9	5	8	7	12	156	1
Referred to other out-patient clinic	7	10	21	14	13	13	8	11	13	13	18	12	153	1
Referred to A&E clinic	8	12	3	9	8	7	4	2	3	2	11	13	82	0
Left department having refused treatment	0	2	0	1	1	1	1	0	0	0	2	0	8	0
Other	1	0	1	0	2	0	2	0	0	0	0	0	6	0
Died in department	0	0	0	0	0	0	0	0	0	0	0	0	0	0
Total	1689	1670	1577	1311	1352	1432	1435	1263	1045	1141	1240	1277	16432	100

Published August 2008

Dan Hungerford (TIIG Analyst) and Zara Anderson (TIIG Project Lead)

Centre for Public Health, Research Directorate, Faculty of Health and Applied Social Sciences, Liverpool John Moores University  
Castle House, North Street, Liverpool, L3 2AY

Tel: 0151 231 4417/4505

Email: [d.j.hungerford@ljmu.ac.uk](mailto:d.j.hungerford@ljmu.ac.uk) or [z.a.anderson@ljmu.ac.uk](mailto:z.a.anderson@ljmu.ac.uk)

Website: [www.nwpho.org.uk/ait](http://www.nwpho.org.uk/ait) Please note that all data requests should be made through the TIIG website