

Ormskirk Paediatric Emergency Department Monthly Bulletin: October 2010 to September 2011

This bulletin provides a breakdown of all injury attendances at Ormskirk Paediatric Emergency Department (ED) between October 2010 and September 2011.¹

Between October 2010 and September 2011 there were 5,724 ED attendances. Injury attendances peaked in July (n=599), with December (n=235) having the least number of injury attendances (**Figure 1**).

Figure 2 illustrates injury attendances by gender. For all months there were more male (60%) injury attendances than female presenting at Ormskirk Paediatric ED.

Figure 3 presents the age group of injury attendances. Across the whole year over two-fifths (41%) of injury attendances were made by people aged between 10 and 14 years.

Table 1 details the injury group of injury attendances. The majority of injury attendances were classified as other injury (71%). Just over one-fifth (22%) were recorded as sports Injury and 4% road traffic collisions (RTCs).

Table 2 illustrates the source of referral for patients presenting with injuries. The majority (93%) of injury attendees were recorded as other. **Table 3** presents injury attendances by location of incident. Nearly four in ten (37%) of all injury locations were recorded as in the home. **Table 4** shows the disposal method of injury attendances. Almost three-quarters (73%) of attendees were discharged requiring no follow-up.

Assault attendees presenting at the Ormskirk ED between October 2010 and September 2011 were mainly male (78%) and the primary location of assault was in a public place (54%). The majority of ED assault attendances were aged 5-14 years (n=46; 55%) and 45% were 15-29 (n=38).

Figure 1: Total number of injury attendances by month, October 2010 to September 2011

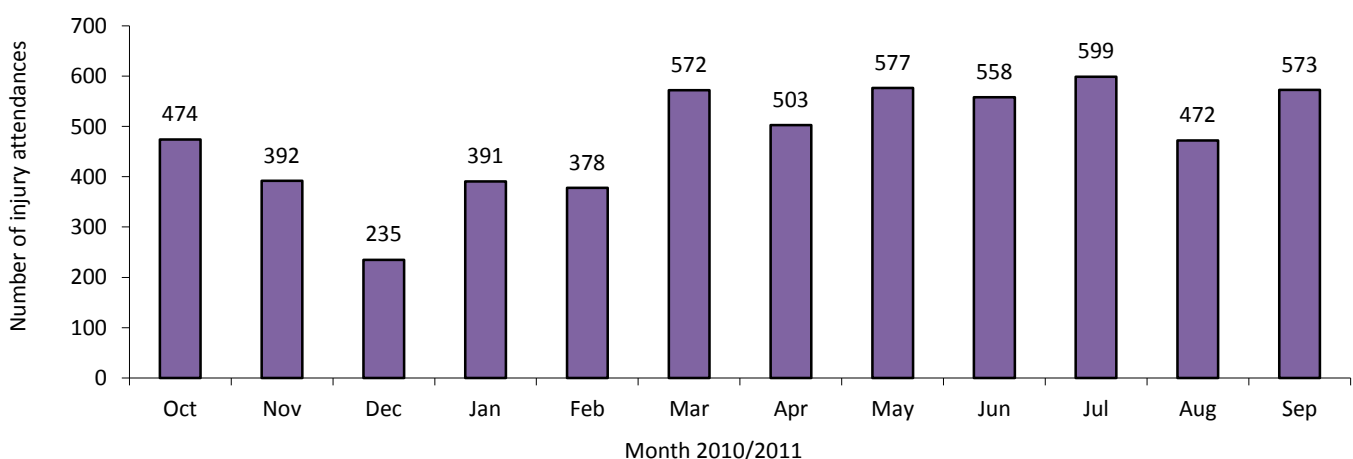


Figure 2: Gender of injury attendances by month, October 2010 to September 2011

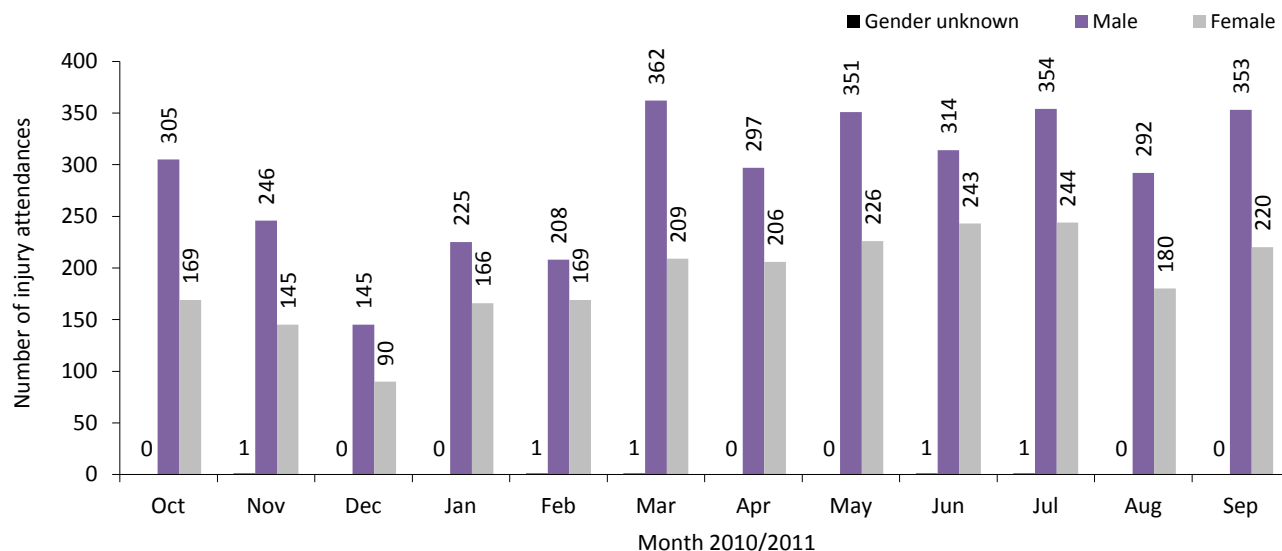


Figure 3: Age group of injury attendances by month, October 2010 to September 2011

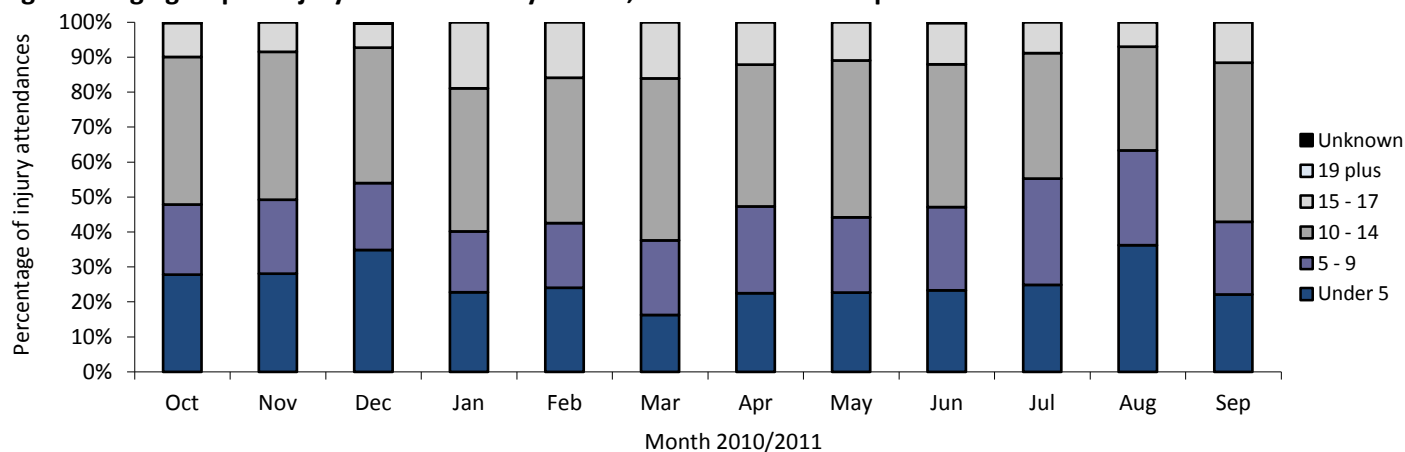


Table 1: Injury attendances by injury group and month, October 2010 to September 2011²³

Injury group	Oct	Nov	Dec	Jan	Feb	Mar	Apr	May	Jun	Jul	Aug	Sep	Total	%
Other injury	296	273	175	252	261	354	360	407	441	495	398	377	4089	71
Sports injury	140	88	29	114	93	196	113	128	86	73	40	166	1266	22
RTC	26	24	23	16	19	12	20	21	16	22	23	14	236	4
Assault	<11	<6	<7	<7	***	<8	5	13	<13	<9	***	7	85	1
Deliberate self-harm	***	***	***	***	***	***	5	8	***	***	<9	9	48	1
Total	474	392	235	391	378	572	503	577	558	599	472	573	5724	100

Table 2: Injury attendances by source of referral and month, October 2010 to September 2011⁴

Source of referral	Oct	Nov	Dec	Jan	Feb	Mar	Apr	May	Jun	Jul	Aug	Sep	Total	%
Other	435	361	212	363	349	554	470	544	514	562	432	527	5323	93
Health care provider: same or other	21	18	6	14	17	8	14	14	18	19	25	14	188	3
Emergency services	6	***	10	5	***	***	12	***	10	6	***	9	70	1
Self referral	7	***	***	5	***	***	6	7	***	***	10	10	66	1
Educational establishment	***	***	***	***	***	***	***	8	7	***	***	5	35	1
GP	***	5	***	***	***	***	***	***	***	6	***	7	34	1
Unknown	***	***	***	***	***	***	***	***	***	***	***	***	***	0
Local authority social services	***	***	***	***	***	***	***	***	***	***	***	***	***	0
Police	***	***	***	***	***	***	***	***	***	***	***	***	***	0
Total	474	392	235	391	378	572	503	577	558	599	472	573	5724	100

Table 3: Injury attendances by location of incident and month, October 2010 to September 2011

Location	Oct	Nov	Dec	Jan	Feb	Mar	Apr	May	Jun	Jul	Aug	Sep	Total	%
Home	169	147	96	119	132	179	201	214	216	250	223	192	2138	37
Public place	150	105	72	130	127	181	220	196	162	223	212	201	1979	35
Educational establishment	87	95	52	113	102	182	<52	131	120	92	***	152	1181	21
Other	<69	<45	<16	<30	<18	<31	<32	<37	<61	<35	<34	<28	<423	7
Work	***	***	***	***	***	***	***	***	***	***	***	***	***	0
Total	474	392	235	391	378	572	503	577	558	599	472	573	5724	100

Table 4: Disposal method of all injury attendances by month, October 2010 to September 2011

Disposal method	Oct	Nov	Dec	Jan	Feb	Mar	Apr	May	Jun	Jul	Aug	Sep	Total	%
Discharged - no follow-up	361	313	181	310	283	410	342	407	401	440	329	381	4158	73
Referred to fracture clinic	51	24	20	39	41	70	69	77	80	80	55	80	686	12
Referred to other health care professional	20	23	18	20	21	30	32	36	31	30	30	37	328	6
Admitted to hospital bed	14	11	***	<9	12	15	24	18	17	22	21	23	189	3
Transferred to other health care provider	17	7	6	5	9	5	12	11	11	9	21	11	124	2
Referred to ED clinic	***	***	***	***	6	15	***	***	***	***	***	***	34	1
Discharged - follow up by other health care provider	***	***	***	***	***	7	7	17	10	5	5	***	64	1
Referred to other out-patient clinic	5	6	***	***	***	9	7	7	***	9	8	***	62	1
Left ED before being treated	***	***	***	***	***	10	6	***	***	***	***	***	39	1
Left ED - refused treatment	***	***	***	***	***	***	***	***	***	***	***	***	***	0
Other	***	***	***	***	***	***	***	***	***	***	***	***	***	0
Total	474	392	235	391	378	572	503	577	558	599	472	573	5724	100

Published December 2011

Johnathan Rooney (TIIG officer)

Centre for Public Health, Faculty of Health and Applied Social Sciences, Liverpool John Moores University

2nd Floor, Henry Cotton Campus, Liverpool, L3 2ET

Tel: 0151 231 4513 Email: j.rooney@ljmu.ac.ukWebsite: www.tiig.info (please note all data requests should be made through the TIIG website)

¹ Previous reports include data from the Minor Injury Unit. These data are no longer housed by Ormskirk's information team but by the PCT and therefore cannot be included in this report.

² *** Please note that all numbers less than five have been suppressed in line with patient confidentiality and if there is only one number in a category then two numbers will be suppressed at the next level (e.g. <6) in order to prevent back calculations from totals.

³ Please note percentages might not add to one hundred due to rounding.

⁴ GP=general practitioner.