

Ormskirk Paediatric Emergency Department Monthly Bulletin: January to December 2011

This bulletin provides a breakdown of all injury attendances at Ormskirk Paediatric Emergency Department (ED) between January and December 2011.¹

Between January and December 2011 there were 5,720 ED attendances. Injury attendances peaked in July (n=599), with December (n=249) having the least number of injury attendances (**Figure 1**).

Figure 2 illustrates injury attendances by gender. For all months there were more male (60%) injury attendances than female presenting at Ormskirk Paediatric ED.

Figure 3 presents the age group of injury attendances. Across the whole year over two-fifths (41%) of injury attendances were made by people aged between 10 and 14 years.

Table 1 details the injury group of injury attendances. The majority of injury attendances

were classified as other injury (71%). Just over one-fifth (22%) were recorded as sports Injury and 4% road traffic collisions (RTCs).

Table 2 illustrates the source of referral for patients presenting with injuries. The majority (93%) of injury attendees were recorded as other. **Table 3** presents injury attendances by location of incident. Nearly four in ten (37%) of all injury locations were recorded as in the home. **Table 4** shows the disposal method of injury attendances. Almost three-quarters (72%) of attendees were discharged requiring no follow-up.

Assault attendees presenting at the Ormskirk ED between January and December 2011 were mainly male (78%) and the primary location of assault was in a public place (53%). The majority of ED assault attendances were aged 5 and 14 years (n=46; 55%) and 43% were 15 and 29 (n=36).

Figure 1: Total number of injury attendances by month, January to December 2011

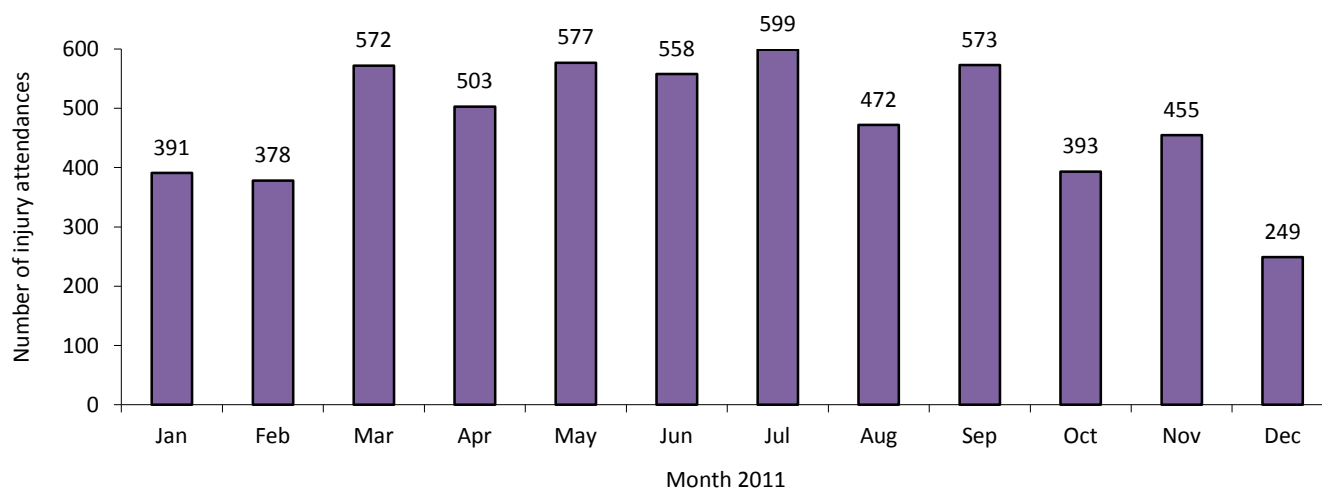


Figure 2: Gender of injury attendances by month, January to December 2011

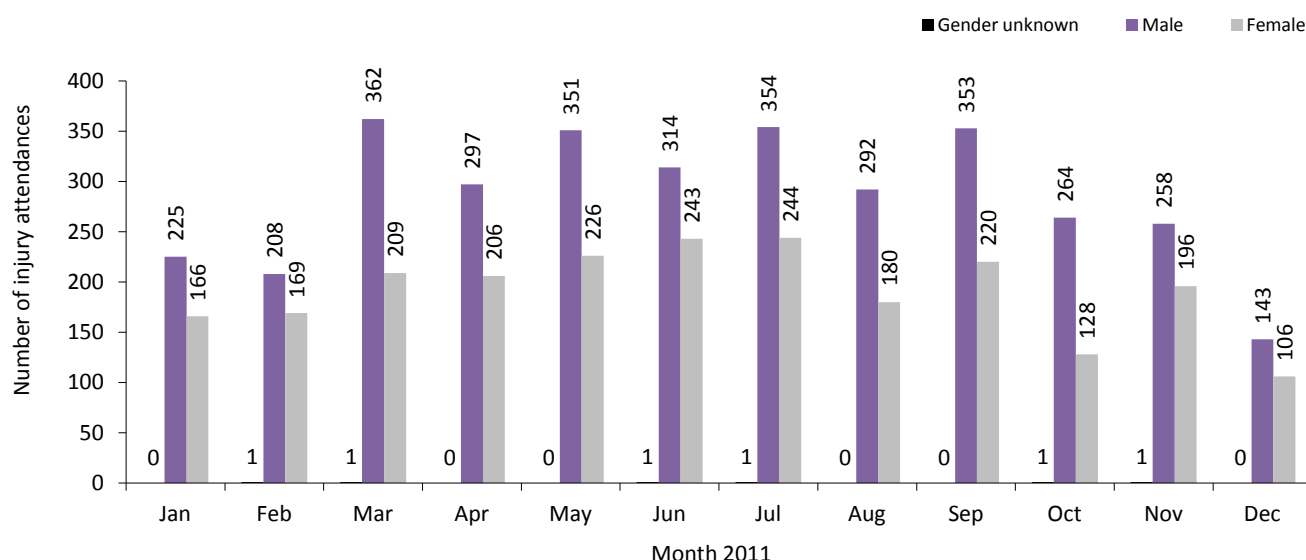


Figure 3: Age group of injury attendances by month, January to December 2011

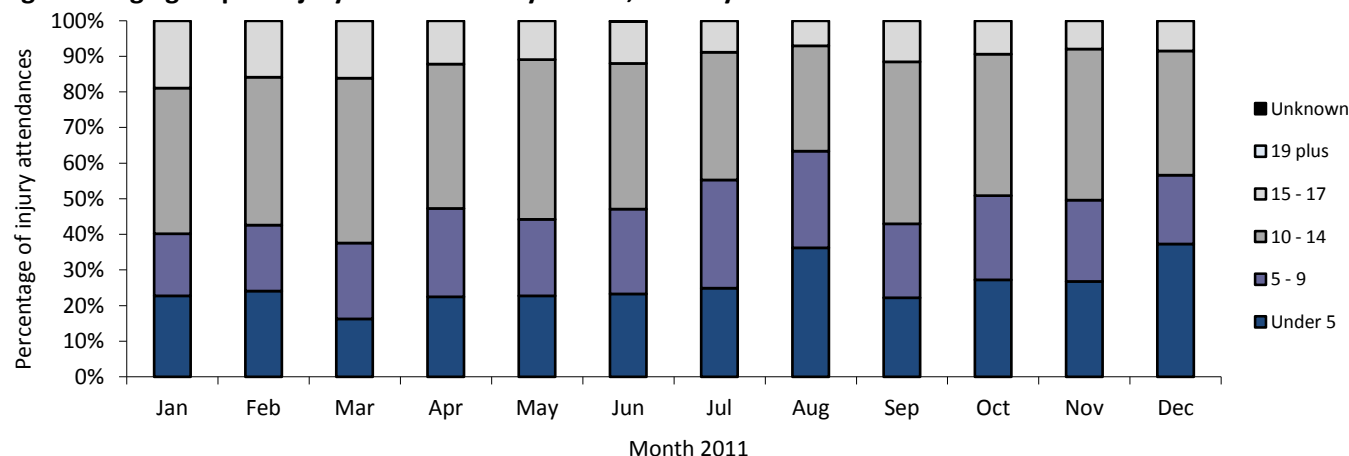


Table 1: Injury attendances by injury group and month, January to December 2011^{2,3,4}

| Injury group | Jan | Feb | Mar | Apr | May | Jun | Jul | Aug | Sep | Oct | Nov | Dec | Total | % |
|----------------------|------------|------------|------------|------------|------------|------------|------------|------------|------------|------------|------------|------------|-------------|------------|
| Other injury | 252 | 261 | 354 | 360 | 407 | 441 | 495 | 398 | 377 | 243 | 298 | 177 | 4063 | 71 |
| Sports injury | 114 | 93 | 196 | 113 | 128 | 86 | 73 | 40 | 166 | 106 | 115 | 32 | 1262 | 22 |
| RTC | 16 | 19 | 12 | 20 | 21 | 16 | 22 | 23 | 14 | 21 | 28 | 27 | 239 | 4 |
| Assault | <7 | *** | <8 | 5 | 13 | <13 | <9 | *** | 7 | *** | <11 | 5 | 83 | 1 |
| Deliberate self-harm | *** | *** | *** | 5 | 8 | *** | *** | <9 | 9 | <20 | *** | 8 | 73 | 1 |
| Total | 391 | 378 | 572 | 503 | 577 | 558 | 599 | 472 | 573 | 393 | 455 | 249 | 5720 | 100 |

Table 2: Injury attendances by source of referral and month, January to December 2011⁵

| Source of referral | Jan | Feb | Mar | Apr | May | Jun | Jul | Aug | Sep | Oct | Nov | Dec | Total | % |
|-------------------------------------|------------|------------|------------|------------|------------|------------|------------|------------|------------|------------|------------|------------|-------------|------------|
| Other | 363 | 349 | 554 | 470 | 544 | 514 | 562 | 432 | 527 | 349 | 417 | 226 | 5307 | 93 |
| Health care provider: same or other | 14 | 17 | 8 | 14 | 14 | 18 | 19 | 25 | 14 | 10 | 18 | 9 | 180 | 3 |
| Self referral | 5 | *** | *** | 6 | 7 | *** | *** | 10 | 10 | 19 | 8 | 5 | 83 | 1 |
| Emergency services | 5 | *** | *** | 12 | *** | 10 | 6 | *** | 9 | *** | *** | *** | 62 | 1 |
| Educational establishment | *** | *** | *** | *** | 8 | 7 | *** | *** | 5 | 5 | 5 | 6 | 45 | 1 |
| GP | *** | *** | *** | *** | *** | *** | 6 | *** | 7 | *** | *** | *** | 32 | 1 |
| Police | *** | *** | *** | *** | *** | *** | *** | *** | *** | *** | *** | *** | 5 | 0 |
| Unknown | *** | *** | *** | *** | *** | *** | *** | *** | *** | *** | *** | *** | *** | 0 |
| Local authority social services | *** | *** | *** | *** | *** | *** | *** | *** | *** | *** | *** | *** | *** | 0 |
| Total | 391 | 378 | 572 | 503 | 577 | 558 | 599 | 472 | 573 | 393 | 455 | 249 | 5720 | 100 |

Table 3: Injury attendances by location of incident and month, January to December 2011⁶

| Location | Jan | Feb | Mar | Apr | May | Jun | Jul | Aug | Sep | Oct | Nov | Dec | Total | % |
|---------------------------|------------|------------|------------|------------|------------|------------|------------|------------|------------|------------|------------|------------|-------------|------------|
| Home | 119 | 132 | 179 | 201 | 214 | 216 | 250 | 223 | 192 | 120 | 143 | 110 | 2099 | 37 |
| Public place | 130 | 127 | 181 | 220 | 196 | 162 | 223 | 212 | 201 | 160 | 143 | 77 | 2032 | 36 |
| Educational establishment | 113 | 102 | 182 | 51 | 131 | 120 | 92 | *** | 152 | 93 | 154 | <49 | 1242 | 22 |
| Other | 29 | 17 | 30 | 31 | 36 | 60 | 34 | <34 | 28 | 20 | 15 | <15 | 347 | 6 |
| Total | 391 | 378 | 572 | 503 | 577 | 558 | 599 | 472 | 573 | 393 | 455 | 249 | 5720 | 100 |

Table 4: Disposal method of all injury attendances by month, January to December 2011

| Disposal method | Jan | Feb | Mar | Apr | May | Jun | Jul | Aug | Sep | Oct | Nov | Dec | Total | % |
|--|------------|------------|------------|------------|------------|------------|------------|------------|------------|------------|------------|------------|-------------|------------|
| Discharged - no follow up | 310 | 283 | 410 | 342 | 407 | 401 | 440 | 329 | 381 | 286 | 337 | 179 | 4105 | 72 |
| Referred to fracture clinic | 39 | 41 | 70 | 69 | 77 | 80 | 80 | 55 | 80 | 47 | 45 | 21 | 704 | 12 |
| Referred to other health care professional | 20 | 21 | 30 | 32 | 36 | 31 | 30 | 30 | 37 | 21 | 32 | 19 | 339 | 6 |
| Admitted to hospital bed | 8 | 12 | 15 | 24 | 18 | 17 | 22 | 21 | 23 | 11 | 19 | 16 | 206 | 4 |
| Transferred to other health care provider | 5 | 9 | 5 | 12 | 11 | 11 | 9 | 21 | 11 | 6 | 7 | 6 | 113 | 2 |
| Discharged - follow up by other health care provider | *** | *** | 7 | 7 | 17 | 10 | 5 | 5 | *** | 10 | *** | *** | 74 | 1 |
| Referred to other out-patient clinic | *** | *** | 9 | 7 | 7 | *** | 9 | 8 | *** | 10 | 10 | *** | 72 | 1 |
| Referred to ED clinic | *** | 6 | 15 | *** | *** | *** | *** | *** | 34 | *** | *** | *** | 63 | 1 |
| Left ED before being treated | *** | *** | 10 | 6 | *** | *** | *** | *** | *** | *** | *** | *** | 36 | 1 |
| Left ED - refused treatment | *** | *** | *** | *** | *** | *** | *** | *** | *** | *** | *** | *** | *** | 0 |
| Other | *** | *** | *** | *** | *** | *** | *** | *** | *** | *** | *** | *** | *** | 0 |
| Total | 391 | 378 | 572 | 503 | 577 | 558 | 599 | 472 | 573 | 393 | 455 | 249 | 5720 | 100 |

Published February 2012

Johnathan Rooney (TIIG officer)

Centre for Public Health, Faculty of Health and Applied Social Sciences, Liverpool John Moores University

2nd Floor, Henry Cotton Campus, Liverpool, L3 2ET

Tel: 0151 231 4513 Email: j.rooney@ljmu.ac.uk

Website: www.tiig.info (please note all data requests should be made through the TIIG website)

¹ Previous reports include data from the Minor Injury Unit. These data are no longer housed by Ormskirk's information team but by the PCT and therefore cannot be included in this report.

² *** Please note that all numbers less than five have been suppressed in line with patient confidentiality and if there is only one number in a category then two numbers will be suppressed at the next level (e.g. <6) in order to prevent back calculations from totals.

³ Please note percentages might not add to one hundred due to rounding.

⁴ Due to low numbers firework injuries have been included under 'Other injury.'

⁵ GP=general practitioner.

⁶ Due to low numbers injuries sustained at work have been included under 'Other' location.