

TIIG
INJURY SURVEILLANCE IN THE NORTH WEST OF ENGLAND

**Ormskirk and District General Hospital
Paediatric Emergency Department**

Monthly Bulletin: October 2012 to September 2013

This bulletin provides a breakdown of all injury attendances to the Paediatric Emergency Department (ED) at Ormskirk and District General Hospital between October 2012 and September 2013.

During this twelve month period, there were 5,425 injury attendances. Attendances peaked in June 2013 (n=630), with December 2012 having the least number of attendances (n=256) (**Figure 1**).

There were more males than females attending the ED between October 2012 and September 2013 (males=3,169; 58%) (**Figure 1**).

The age group of injury attendees are presented in **Figure 2**. Almost two-fifths (38%) of attendees were aged 10-14 years (n=2,039), followed by 26% aged 5-9 (n=1,423) and those aged 0-4 years accounting for a quarter (25%) of attendances (n=1,379).

Table 1 details the injury group of Ormskirk and District General Hospital Paediatric ED attendances. Three-quarters (75%) of injuries were classified as other injury (n=4,045), with one-fifth (20%) of injuries caused by sport (n=1,060). Road traffic collisions accounted for 4% of injury attendances (n=218).

The source of referral for patients attending the ED is illustrated in **Table 2**. The majority (87%) of injury presentations were recorded as other. Six per cent of

attendances were self-referrals (n=314), 3% were referred by a health care provider (n=166) and 2% were referred by the emergency services (n=112).

Table 3 presents injury attendances by incident location. Just over a third (34%) of all injuries were reported to have taken place in a public place (n=1,868) with a third (33%) which occurred at home (n=1,808). Almost a quarter (23%) occurred in an educational establishment (n=1,249).

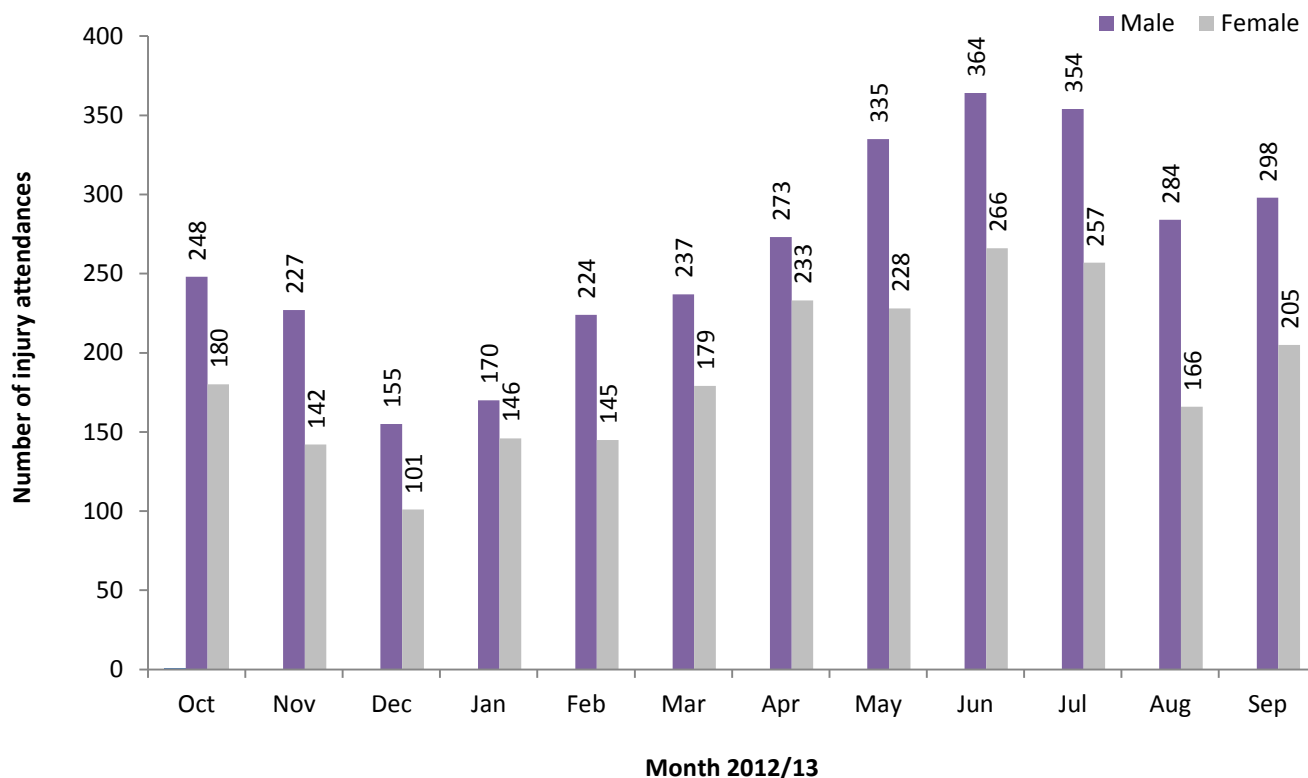
The disposal method of injury attendances are displayed in **Table 4**. Almost seven in ten (69%) of attendees were discharged with no follow-up treatment required (n=3,733). Thirteen per cent of attendees were referred to the fracture clinic (n=716).

Assault attendances

There were 58 assault attendees presenting to Ormskirk and District General Hospital Paediatric ED between October 2012 and September 2013.

Almost seven in ten (69%) of assault attendees were male (n=40) and 57% were aged 5-14 years (n=33). Nearly three-fifths (57%) of assaults occurred in a public place (n=33) followed by 36% in an educational establishment (n=21%).

Figure 1: Gender of ED injury attendances by month, October 2012 to September 2013*



* There were 8 attendances where the gender was unknown.

Figure 2: Age group of ED injury attendances by month, October 2012 to September 2013

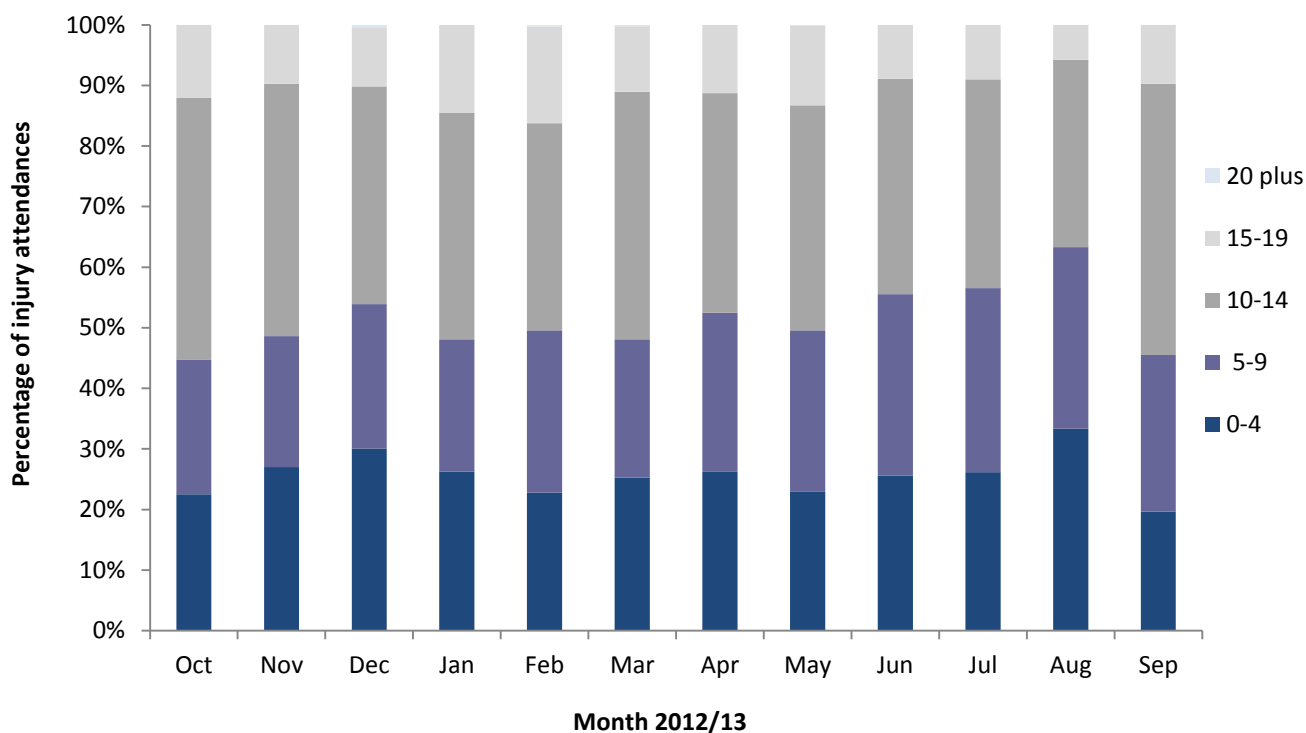


Table 1: ED attendances by injury group and month, October 2012 to September 2013¹

Injury group	Oct	Nov	Dec	Jan	Feb	Mar	Apr	May	Jun	Jul	Aug	Sep	Total	%
Other injury	285	256	187	250	250	302	377	426	489	500	397	326	4045	75
Sports injury	114	88	41	49	96	95	106	112	118	76	33	132	1060	20
Road traffic collision	18	18	20	11	13	11	16	20	16	28	17	30	218	4
Assault	7	***	***	<10	5	<10	***	<10	<10	***	***	10	58	1
Deliberate self-harm	7	***	***	***	5	***	<10	***	***	***	***	5	43	1
Total	431	370	256	316	369	416	507	565	630	612	450	503	5425	100

¹ Please note that all numbers less than five have been suppressed (with ***) in line with patient confidentiality. If there is only one number less than five in a category then two numbers will be suppressed to prevent back calculations from totals.

Table 2: ED attendances by source of referral and month, October 2012 to September 2013^{2,3}

Source of referral	Oct	Nov	Dec	Jan	Feb	Mar	Apr	May	Jun	Jul	Aug	Sep	Total	%
Other	406	334	235	288	269	322	432	483	558	541	401	451	4720	87
Self-referral	***	***	5	12	61	49	42	37	26	26	38	12	314	6
HCP: same or other	9	12	5	9	15	13	19	21	21	20	6	16	166	3
Emergency services	6	15	6	***	9	9	8	13	12	12	***	16	112	2
Educational establishment	***	6	***	<10	10	18	***	6	<15	<10	***	***	79	1
General medical practitioner	***	0	***	0	***	***	***	***	***	***	0	***	20	0
Police	***	0	***	0	0	0	***	***	0	0	0	0	6	0
Unknown	0	0	0	0	***	***	0	0	0	0	0	0	***	0
Local authority social services	0	***	0	0	***	0	***	0	0	0	0	***	***	0
Total	431	370	256	316	369	416	507	565	630	612	450	503	5425	100

Table 3: ED attendances by location of incident and month, October 2012 to September 2013²

Location	Oct	Nov	Dec	Jan	Feb	Mar	Apr	May	Jun	Jul	Aug	Sep	Total	%
Public place	134	99	87	84	131	119	192	184	188	232	214	204	1868	34
Home	121	123	90	114	115	123	176	190	244	199	167	146	1808	33
Educational establishment	133	125	56	97	96	142	88	138	138	118	8	110	1249	23
Other	43	23	23	21	27	32	51	53	60	<65	61	43	<505	9
Work	0	0	0	0	0	0	0	0	0	***	0	0	***	0
Total	431	370	256	316	369	416	507	565	630	612	450	503	5425	100

Table 4: ED attendances by discharge destination and month, October 2012 to September 2013^{2,3}

Discharge destination	Oct	Nov	Dec	Jan	Feb	Mar	Apr	May	Jun	Jul	Aug	Sep	Total	%	
Discharged - did not require any follow up treatment	272	242	150	192	273	322	379	413	447	420	262	361	3733	69	
Referred to fracture clinic	64	43	27	31	38	43	70	77	81	110	71	61	716	13	
Discharged - follow up treatment with other HCP	48	34	39	51	8	4	6	10	14	8	46	18	286	5	
Referred to ED clinic	13	21	13	17	10	13	18	24	23	21	15	24	212	4	
Referred to other health care professional	10	6	9	8	13	11	9	10	31	13	19	12	151	3	
Admitted	12	10	9	8	10	8	7	13	9	19	11	15	131	2	
Transferred to other HCP	6	***	<10	***	6	7	11	10	19	14	12	<15	107	2	
Referred to other out-patient clinic	***	***	***	***	***	***	***	***	<10	***	***	<15	0	47	1
Left department before being treated	***	10	0	0	5	<10	***	***	***	***	***	***	***	36	1
Left department having refused treatment	0	***	0	***	***	0	0	0	0	0	0	0	***	0	
Other	0	0	0	***	***	0	0	0	0	***	0	0	***	0	
Total	431	370	256	316	369	416	507	565	630	612	450	503	5425	100	

Published October 2013

Karen A Critchley (née Swarbrick) – TIIG Researcher/Analyst

Centre for Public Health, Faculty of Education, Health and Community, Liverpool John Moores University,
2nd Floor, Henry Cotton Building, Liverpool L3 2ET

T: 0151 231 4498 | E: K.A.Swarbrick@ljmu.ac.uk | W: www.tiig.info and www.cph.org.uk

(Please note data requests should be made through the TIIG website)

² Please note that all numbers less than five have been suppressed (with ***) in line with patient confidentiality. If there is only one number less than five in a category then two numbers will be suppressed to prevent back calculations from totals.

³ HCP = Health care provider.