



TIIG

INJURY SURVEILLANCE IN THE NORTH WEST OF ENGLAND

ORMSKIRK AND DISTRICT GENERAL HOSPITAL PAEDIATRIC EMERGENCY DEPARTMENT

MONTHLY BULLETIN: APRIL 2013 TO MARCH 2014

This bulletin provides a breakdown of all injury attendances to the Paediatric Emergency Department (ED) at Ormskirk and District General Hospital between April 2013 and March 2014.

In the twelve month period there were 5,650 injury attendances to the ED. Attendances peaked in June 2013 (n=630) compared to December 2013, the month with the fewest (n=308) (**Figure 1**).

There were more males than females attending the ED in 2013/14 (males=3,325; 59%) (**Figure 1**). Under two-fifths (38%) were aged between 10 and 14 years (n=2,142), while over a quarter (26%) were aged between five and nine years (n=1,446) and exactly a quarter (25%) were aged four years or less (n=1,431) (**Figure 2**).

Table 1 shows the injury group of attendances to the ED between April 2013 and March 2014. Just under three-quarters (73%) of injuries were categorised as 'other' injury (n=4,147) followed by over one-fifth (22%) sustained by sport (n=1,215). Road traffic collisions accounted for 4% of attendances (n=207) while assaults (n=45) and deliberate self-harm (n=36) each accounted for 1%.

The referral source to the ED is illustrated in **Table 2**. The majority (89%) of injury presentations were recorded as 'other' (n=5,051). Four per cent of

attendees self-referred (n=217) and 3% were referred by a health care provider (n=183).

Over a third (34%) of incidents occurred in a public place (n=1,934) followed by 32% which occurred in the home (n=1,836) and 24% which occurred in an educational establishment (n=1,337) (**Table 3**).

The disposal method for injury attendances is displayed in **Table 4**. Over seven in ten (72%) attendees were discharged from hospital with no follow-up treatment required (n=4,074) while 13% were referred to the fracture clinic (n=720).

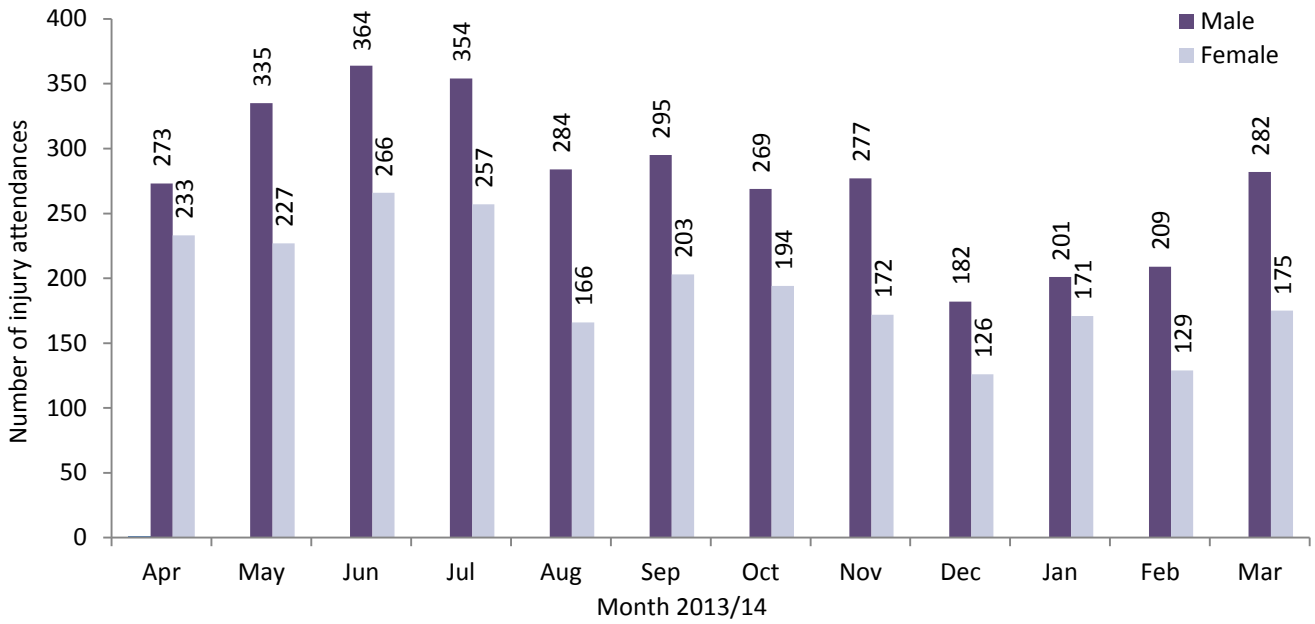
ASSAULT ATTENDANCES

Between April 2013 and March 2014 there were 45 assault attendees presenting Paediatric ED.

The majority (67%) of assault attendees were male (n=30). Just under half (49%) were aged between 15 and 19 years (n=22) and 47% were aged between 10 and 14 years (n=21).

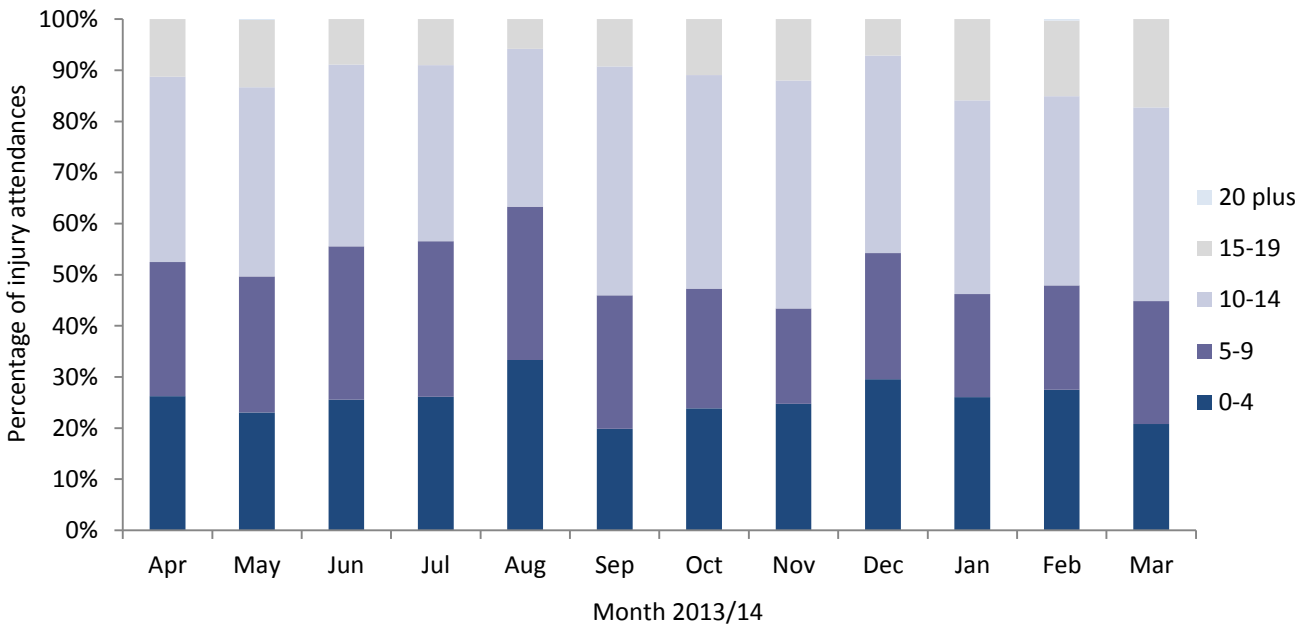
Three in five (60%) assaults occurred in a public place (n=27) while 27% occurred in an educational establishment (n=12). The majority (87%) of assault attendees were discharged from hospital with no follow-up treatment required (n=39).

Figure 1: ED attendances by gender and month, April 2013 to March 2014[^]



[^] There were six records where the gender was unknown; these have been omitted from the chart.

Figure 2: ED attendances by age group and month, April 2013 to March 2014[†]



[†] There were two records where the age was unknown; these have been omitted from the chart.

Table 1: ED attendances by injury group and month, April 2013 to March 2014¹

Injury group	Apr	May	Jun	Jul	Aug	Sep	Oct	Nov	Dec	Jan	Feb	Mar	Total	%
Other injury	377	426	489	500	397	326	306	290	224	266	242	304	4147	73%
Sports injury	106	112	118	76	33	132	134	138	67	87	77	135	1215	22%
Road traffic collision	16	20	16	28	17	30	19	10	12	15	12	12	207	4%
Assault	***	<10	<10	***	***	5	<10	6	***	***	***	<10	45	1%
Deliberate self-harm	<10	***	***	***	***	5	***	5	***	***	<10	***	36	1%
Total	507	564	630	612	450	498	465	449	308	372	338	457	5650	100%

¹ Please note that all numbers less than five have been suppressed (with ***) in line with patient confidentiality. If there is only one number less than five in a category then two numbers have been suppressed to prevent back calculations from totals.

Table 2: ED attendances by referral source and month, April 2013 to March 2014²

Referral source	Apr	May	Jun	Jul	Aug	Sep	Oct	Nov	Dec	Jan	Feb	Mar	Total	%
Other	432	483	558	541	401	447	427	407	285	343	304	423	5051	89%
Self-referral	42	37	26	26	38	12	9	8	8	5	6	0	217	4%
Health care provider: same or other	19	21	21	20	6	16	12	17	8	12	12	19	183	3%
Emergency services	8	13	12	12	***	15	9	6	***	8	9	7	107	2%
Educational establishment	***	6	<15	<10	***	***	***	8	***	***	***	***	52	1%
General medical practitioner	***	***	***	***	0	***	***	***	0	***	***	6	28	0%
Police	***	***	0	0	0	0	***	0	0	***	***	***	<10	0%
Local authority social services	***	0	0	0	0	***	***	***	0	0	0	0	***	0%
Total	507	564	630	612	450	498	465	449	308	372	338	457	5650	100%

Table 3: ED attendances by incident location and month, April 2013 to March 2014²

Incident location	Apr	May	Jun	Jul	Aug	Sep	Oct	Nov	Dec	Jan	Feb	Mar	Total	%
Public place	192	183	188	232	214	200	153	120	84	89	105	174	1934	34%
Home	176	190	244	199	167	146	119	113	113	127	104	138	1836	32%
Educational establishment	88	138	138	118	8	109	148	181	81	121	97	110	1337	24%
Other	51	53	60	<65	61	43	45	35	30	35	32	35	<545	10%
Work	0	0	0	***	0	0	0	0	0	0	0	0	***	0%
Total	507	564	630	612	450	498	465	449	308	372	338	457	5650	100%

Table 4: ED attendances by disposal method and month, April 2013 to March 2014^{2,3}

Disposal method	Apr	May	Jun	Jul	Aug	Sep	Oct	Nov	Dec	Jan	Feb	Mar	Total	%
Discharged - no follow-up	379	412	447	420	262	356	345	336	224	293	247	353	4074	72%
Referred to fracture clinic	70	77	81	110	71	61	57	48	42	32	25	46	720	13%
Referred to ED clinic	18	24	23	21	15	24	27	28	23	10	19	17	249	4%
Referred to other health care professional	9	10	31	13	19	12	13	13	7	18	13	9	167	3%
Admitted to hospital	7	13	9	19	11	15	10	12	***	***	15	11	128	2%
Discharged - follow-up by other HCP	6	10	14	8	46	18	***	5	***	***	8	***	125	2%
Transferred to other HCP	11	10	19	14	12	<15	7	<10	***	6	***	5	105	2%
Referred to other outpatient clinic	***	<10	***	***	<15	0	***	***	***	6	5	***	47	1%
Left department before being treated	***	***	***	***	***	***	***	0	***	0	***	11	33	1%
Left department having refused treatment	0	0	0	0	0	0	0	0	0	***	0	0	***	0%
Other	0	0	0	***	0	0	0	0	0	0	0	0	***	0%
Total	507	564	630	612	450	498	465	449	308	372	338	457	5650	100%

Published May 2014

Karen A Critchley (née Swarbrick) – TIIG Researcher/Analyst

Centre for Public Health, Faculty of Education, Health and Community, Liverpool John Moores University,
2nd Floor, Henry Cotton Building, Liverpool L3 2ETT: 0151 231 4498 | E: k.a.critchley@ljmu.ac.uk | W: www.tiig.info and www.cph.org.uk | Twitter: www.twitter.com/tiig_cph² Please note that all numbers less than five have been suppressed (with ***) in line with patient confidentiality. If there is only one number less than five in a category then two numbers have been suppressed to prevent back calculations from totals.³ HCP = Health care provider.