

# Trauma and Injury Intelligence Group Biannual Bulletin

Ormskirk and District General Hospital Emergency Department  
April 2014 to March 2015

July 2015



Centre for Public Health,  
Faculty of Education, Health and Community,  
Liverpool John Moores University,  
Henry Cotton Campus,  
15-21 Webster Street,  
Liverpool, L3 2ET

[cph.org.uk](http://cph.org.uk)

0151 231 4500

[tiig@ljmu.ac.uk](mailto:tiig@ljmu.ac.uk)

[tiig.info](http://tiig.info)

[twitter.com/tiig\\_cph](https://twitter.com/tiig_cph)

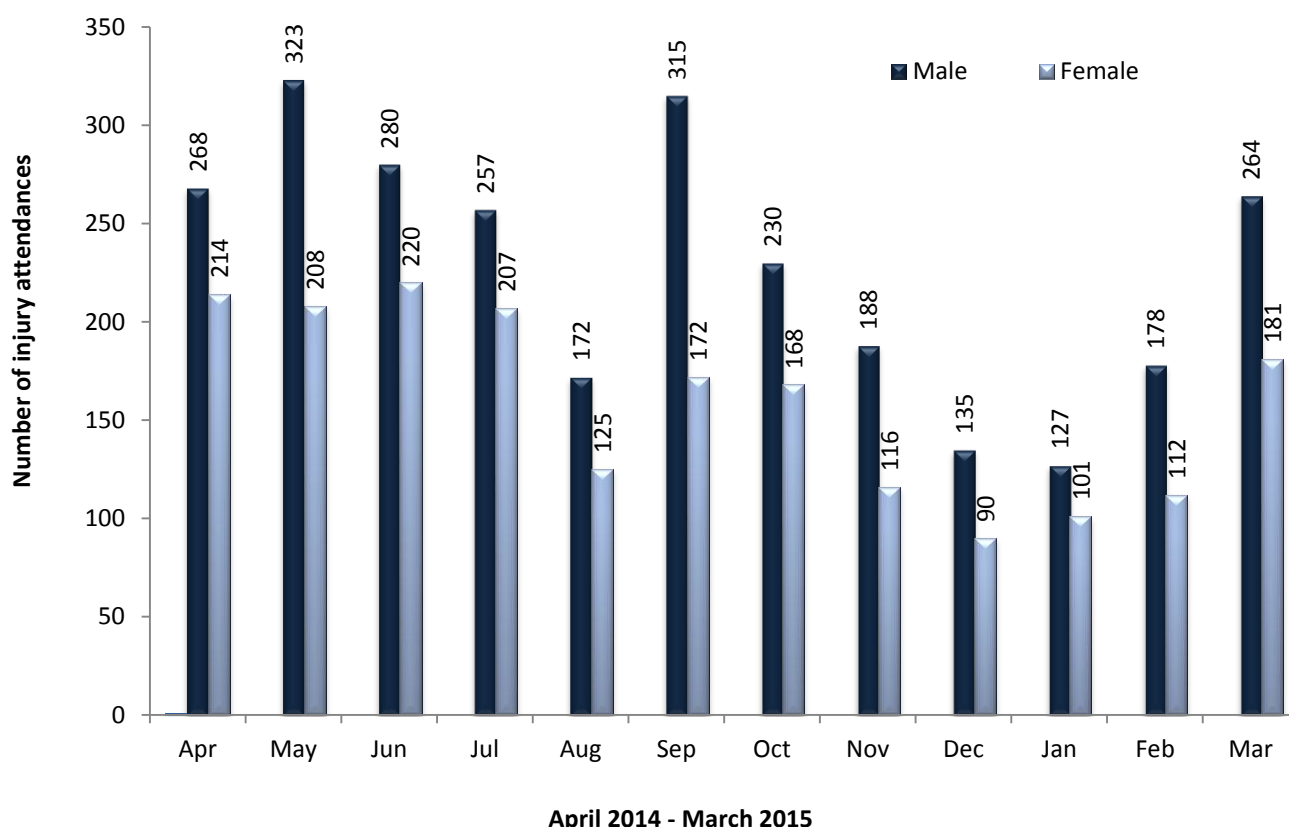
**CPH** | CENTRE FOR  
PUBLIC HEALTH  
LIVERPOOL JOHN MOORES UNIVERSITY



## ALL INJURY ATTENDANCES

This bulletin provides a breakdown of all injury attendances to the Paediatric Emergency Department (ED) at Ormskirk and District General Hospital between April 2014 and March 2015. In the twelve month period there were 4,654 injury attendances to the ED. Attendances, calculated as a daily average, peaked in May and June 2014 (17 per day each), while December 2014 and January 2015 had the fewest attendances (7 per day each; figure 1).

**Figure 1: ED attendances by gender and month, April 2014 to March 2015<sup>^</sup>**



<sup>^</sup> There were less than five records where the gender was unknown; these have been omitted from the chart.

There were more male (59%) than female attendances to the ED in 2014/15 (n=2,737; figure 1). Two-fifths (40%) were aged between 10 and 14 years (n=1,845), just over a quarter (26%) were aged between five and nine years (n=1,211) and just under a quarter (24%) were aged four years or less (n=1,110; figure 2).

**Figure 2: ED attendances by age group and month, April 2014 to March 2015**

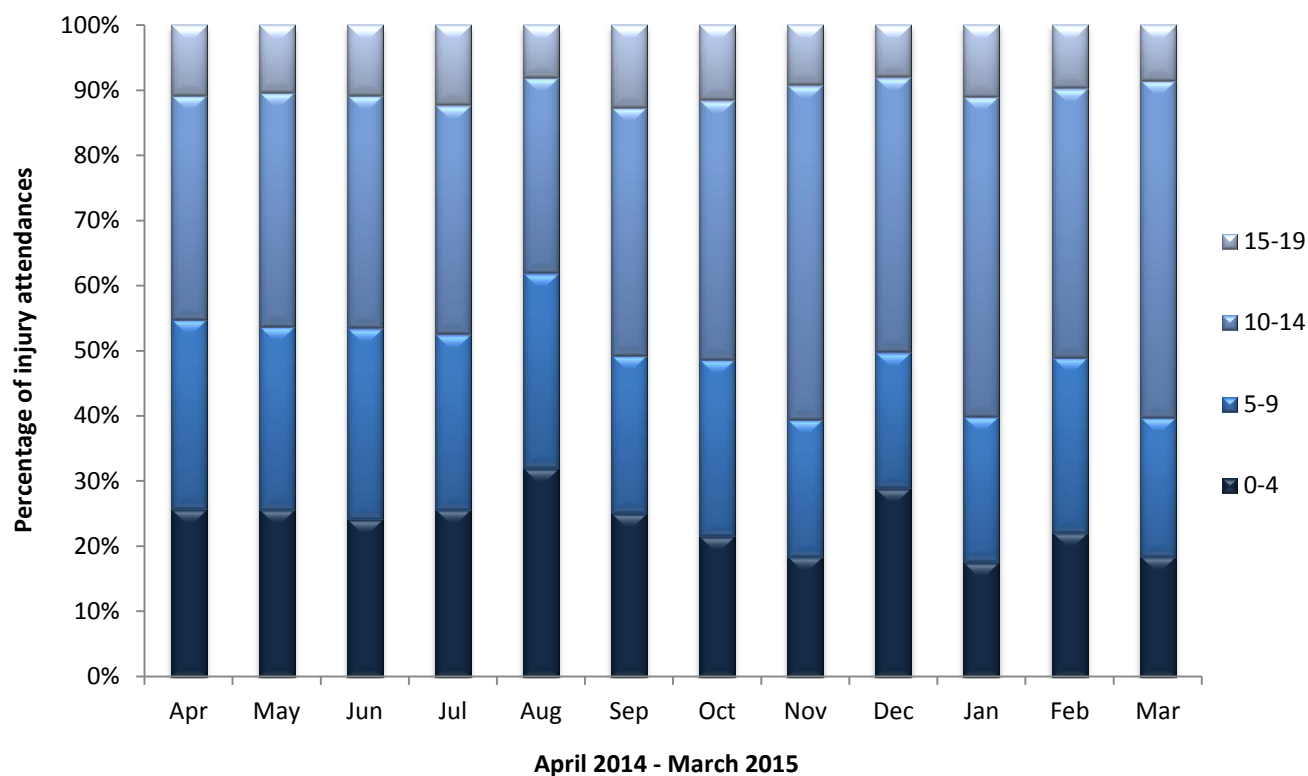


Table 1 shows the injury group of attendees to the ED between April 2014 and March 2015. Just under seven in ten (69%) of injuries were categorised as ‘other’ injuries (n=3,203) followed by a quarter (25%) which were sustained by playing sport (n=1,171). Road traffic collisions accounted for 4% of attendances (n=198), while assaults (n=53) and deliberate self-harm (n=29) each accounted for 1%.

**Table 1: ED attendances by injury group and month, April 2014 to March 2015<sup>1</sup>**

Injury group	Apr	May	Jun	Jul	Aug	Sep	Oct	Nov	Dec	Jan	Feb	Mar	Total	%
<b>Other injury</b>	332	363	384	329	220	315	238	216	167	159	203	277	3203	69%
<b>Sports injury</b>	119	140	95	110	61	147	129	73	<40	<50	71	139	1171	25%
<b>Road traffic collision</b>	26	17	<25	21	11	<20	23	8	14	14	10	17	198	4%
<b>Assault</b>	***	6	0	5	***	***	<10	<10	5	5	***	7	53	1%
<b>Deliberate self-harm</b>	***	5	***	0	***	5	***	***	***	***	***	5	29	1%
<b>Total</b>	482	531	501	465	297	487	399	304	225	228	290	445	4654	100%

The referral source to the ED is displayed in table 2. The majority (89%) of injury presentations were recorded as ‘other’ referral (n=4,132), 7% of attendees were self-referred (n=332) and 2% were referred by a health care provider (n=101).

<sup>1</sup> Please note that all numbers less than five have been suppressed (\*\*\*) in line with patient confidentiality. If there is only one number less than five in a category then two numbers have been suppressed to prevent back calculations from totals.

**Table 2: ED attendances by referral source and month, April 2014 to March 2015<sup>1</sup>**

Referral source	Apr	May	Jun	Jul	Aug	Sep	Oct	Nov	Dec	Jan	Feb	Mar	Total	%
<b>Other</b>	453	489	480	436	286	438	141	287	210	215	280	417	4132	89%
<b>Self-referral</b>	8	23	6	6	***	27	243	5	5	***	***	***	332	7%
<b>Health care provider: same or other</b>	10	10	9	11	5	9	7	9	***	8	***	16	101	2%
<b>Emergency services</b>	7	<10	***	5	***	***	<10	0	***	0	***	5	42	1%
<b>General medical practitioner</b>	***	***	***	***	0	***	0	***	***	***	***	***	27	1%
<b>Educational establishment</b>	***	0	***	***	0	6	***	***	0	0	***	***	<20	0%
<b>Police</b>	0	0	***	0	0	***	0	0	0	0	0	***	***	0%
<b>Total</b>	482	531	501	465	297	487	399	304	225	228	290	445	4654	100%

Over a third (37%) of incidents occurred in a public place (n=1,734) followed by 33% which occurred in the home (n=1,536) and 21% which occurred in an educational establishment (n=965; table 3).

**Table 3: ED attendances by incident location and month, April 2014 to March 2015<sup>1,†</sup>**

Incident location	Apr	May	Jun	Jul	Aug	Sep	Oct	Nov	Dec	Jan	Feb	Mar	Total	%
<b>Public place</b>	195	212	170	189	129	182	144	110	72	86	105	140	1734	37%
<b>Home</b>	191	196	195	152	137	151	91	83	81	61	86	112	1536	33%
<b>Educational establishment</b>	52	<95	96	66	***	97	121	74	44	70	83	171	965	21%
<b>Other</b>	44	34	40	58	<30	57	<45	37	27	11	<15	<25	<415	9%
<b>Work</b>	0	***	0	0	0	0	***	0	0	0	***	***	***	0%
<b>Total</b>	482	531	501	465	297	487	399	304	224	228	289	445	4652	100%

<sup>†</sup>There were less than five records where incident location was unknown; these have been omitted from the table. There were also less than five care home records; these were added to the 'other' category.

The disposal method for injury attendances is displayed in table 4. Just under seven in ten (69%) attendees were discharged from hospital with no follow-up treatment required (n=3,219), while 11% were referred to the fracture clinic (n=508).

**Table 4: ED attendances by disposal method and month, April 2014 to March 2015<sup>1,#</sup>**

Disposal method	Apr	May	Jun	Jul	Aug	Sep	Oct	Nov	Dec	Jan	Feb	Mar	Total	%
Discharged - no follow-up	363	398	361	354	202	348	261	183	123	162	175	289	3219	69%
Referred to fracture clinic	32	59	63	46	41	77	31	23	33	19	32	52	508	11%
Discharged - follow-up by other HCP	12	5	9	6	5	14	12	38	28	26	53	43	251	5%
Referred to ED clinic	19	20	25	13	13	20	15	20	12	9	12	26	204	4%
Admitted to hospital	13	<20	10	11	14	10	12	7	<10	***	8	13	124	3%
Referred to other health care professional	12	15	***	16	8	***	53	***	0	0	***	6	120	3%
Transferred to other HCP	18	8	14	5	8	9	5	0	***	***	0	***	71	2%
Other	0	0	***	***	***	0	7	23	8	5	5	12	63	1%
Referred to other outpatient clinic	8	9	11	10	***	***	***	5	6	***	***	0	60	1%
Left department before being treated	5	***	***	***	***	***	***	***	7	0	***	***	32	1%
Left department having refused treatment	0	0	0	***	0	0	0	0	0	0	0	0	***	0%
Unknown	0	0	0	0	0	***	0	0	0	0	0	0	***	0%
<b>Total</b>	<b>482</b>	<b>531</b>	<b>501</b>	<b>465</b>	<b>297</b>	<b>487</b>	<b>399</b>	<b>304</b>	<b>225</b>	<b>228</b>	<b>290</b>	<b>445</b>	<b>4653</b>	<b>100%</b>

# There was one record where disposal method was unknown; this was omitted from the table.

## ASSAULT ATTENDANCES

Between April 2014 and March 2015 there were 53 assault attendees presenting to Ormskirk and District General Hospital. The majority (75%) of assault attendees were male (n=40). Over half (53%) were aged between 10 and 14 years (n=28) and 36% were aged between 15 and 19 years (n=19). Over three in five (62%) assaults occurred in a public place (n=33), while 21% occurred in an educational establishment (n=11). The majority (57%) of assault attendees were discharged from hospital with no follow-up treatment required (n=30).