

## Royal Preston Hospital Emergency Department

### Monthly Bulletin: October 2009 to September 2010

This bulletin provides a breakdown of all injury attendances at Royal Preston Hospital Emergency Department (ED) between October 2009 and September 2010.

Between October 2009 and September 2010 there were 31,463 attendances to Royal Preston Hospital ED. The month with the highest attendance was April with 2,900 attendances (**Figure 1**). There were more male than female attendances presenting at Royal Preston Hospital ED (males=17,556; 56%).

**Figure 2** illustrates age group of ED attendances for each month. The majority of ED attendances were aged 15-29 (n=9,472; 30%) and 30% were 30-59 years old (n=9,317).

**Table 1** details the injury group of ED attendances. In almost two-fifths (39%) of attendances, injury group was recorded as falls. Other injury accounted for 36% of attendances, road traffic collisions (RTC) 10%, sports injury 9% and assaults 5%.

**Table 2** illustrates the location of incident for patients attending the Royal Preston Hospital ED. The primary locations of injury were public place (30%) and home (30%). This was followed by other location (9%). The discharge destination for injury attendances is displayed in **Table 3**. It indicates that over half (54%) of attendances were discharged with no follow-up treatment. Just over one in ten (12%)

attendances were discharged into the care of their GP and 11% went to the fracture clinic.

#### Assault attendances

Between October 2009 and September 2010 there were 1,648 assault attendances to Royal Preston Hospital ED. The month with the highest attendance was April with 168 attendances (**Figure 3**). There were more male than female assault attendances presenting at Royal Preston Hospital ED (males=1,199; 73%).

**Table 4** details the age group of assault attendances for each month. The majority of ED assault attendances were aged 15-29, (n=992; 60%) and a third (33%) were aged 30-59 (n=547).

**Table 5** illustrates the incident location for assault attendances to Royal Preston Hospital ED. The primary incident locations for assault attendances were in a public place (64%), followed by home (14%) and other (8%).

The discharge destination for assault attendances is displayed in **Table 6**. It indicates that less than half (45%) of assault attendances were discharged with no follow-up treatment. Over a quarter (28%) of attendances required follow-up treatment and 15% of assault attendees were admitted to hospital.

Figure 1: Gender of ED injury attendances by month, October 2009 to September 2010

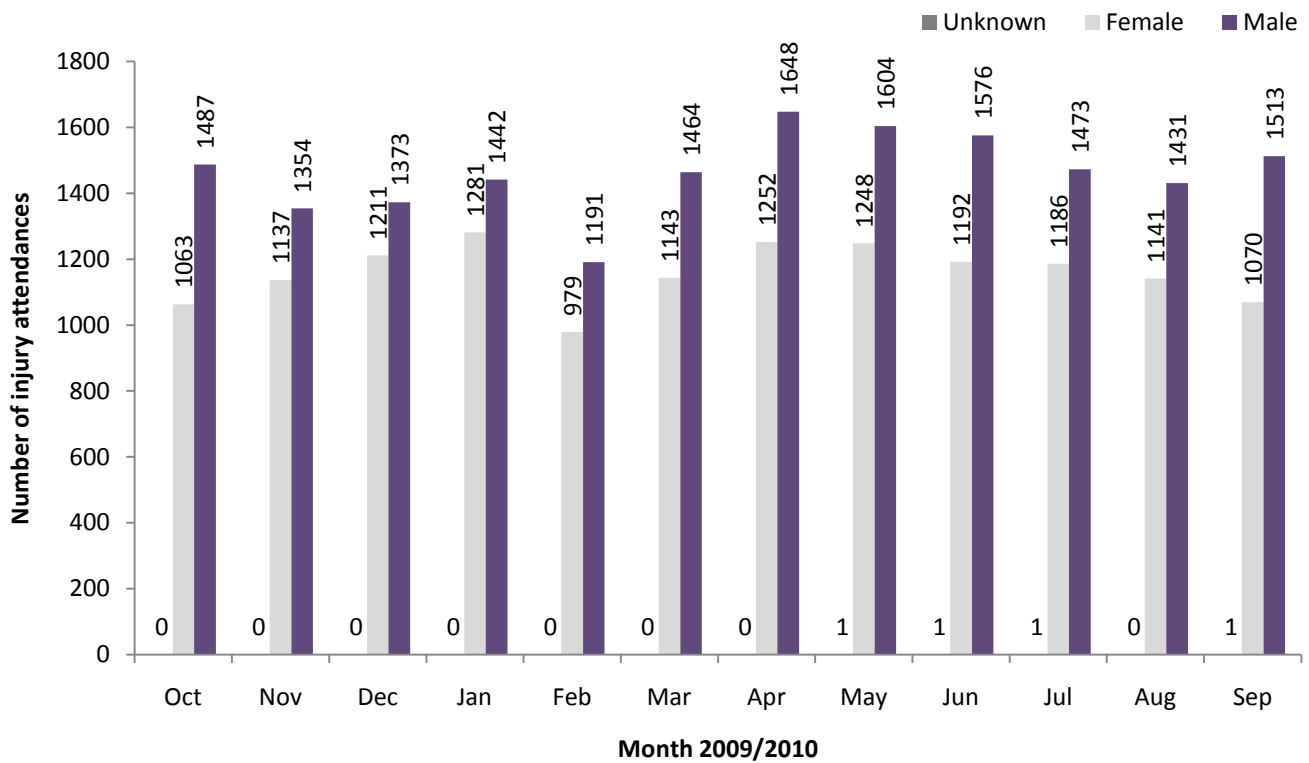


Figure 2: Percentage of ED injury attendances by age group and month, October 2009 to September 2010

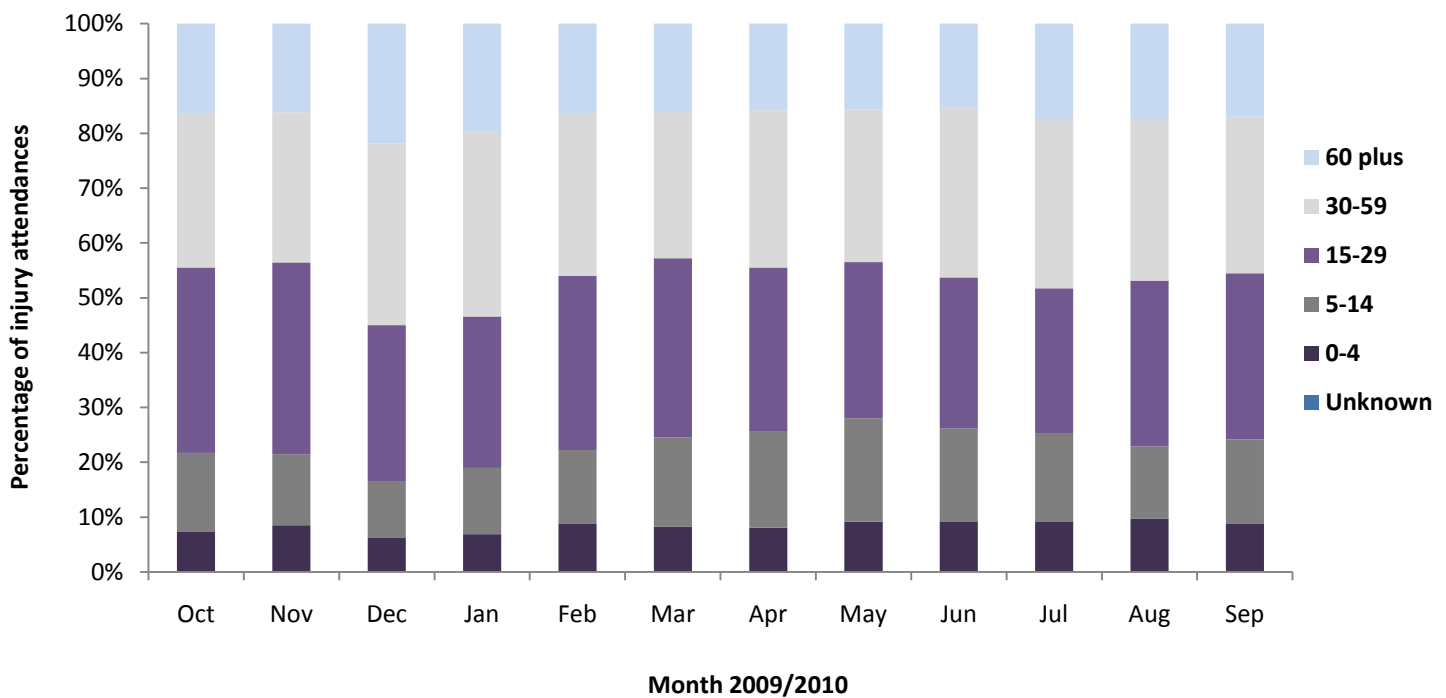


Table 1: ED injury attendances by injury group and month, October 2009 to September 2010<sup>1</sup>

Injury group	Oct	Nov	Dec	Jan	Feb	Mar	Apr	May	Jun	Jul	Aug	Sep	Total	%
Fall	860	883	1249	1447	790	961	1028	1107	991	999	1012	964	12291	39
Other injury	889	924	794	742	751	934	1130	1057	1124	1059	947	907	11258	36
RTC	342	315	271	250	268	211	245	233	260	261	263	279	3198	10
Sports injury	294	220	128	152	228	350	311	276	229	206	175	292	2861	9
Assault	155	136	127	121	120	138	168	157	144	117	151	114	1648	5
Deliberate self-harm	10	13	15	11	13	13	18	23	21	18	24	28	207	1
<b>Total</b>	<b>2550</b>	<b>2491</b>	<b>2584</b>	<b>2723</b>	<b>2170</b>	<b>2607</b>	<b>2900</b>	<b>2853</b>	<b>2769</b>	<b>2660</b>	<b>2572</b>	<b>2584</b>	<b>31463</b>	<b>100</b>

<sup>1</sup> Please note percentages might not add to one hundred due to rounding.

**Table 2: ED injury attendances by incident location and month, October 2009 to September 2010<sup>23</sup>**

Location	Oct	Nov	Dec	Jan	Feb	Mar	Apr	May	Jun	Jul	Aug	Sep	Total	%
Public place	842	727	969	1028	662	623	775	860	784	791	770	688	9519	30
Home	711	823	787	731	651	782	852	839	817	856	858	801	9508	30
Other	187	166	248	344	196	279	307	221	268	165	239	231	2851	9
Work	214	249	196	222	192	211	218	224	233	255	200	220	2634	8
Sport	279	204	126	124	210	287	294	240	212	197	182	254	2609	8
Educational establishment	173	190	121	133	120	236	147	170	129	123	***	165	1710	5
Home other persons	37	33	68	64	56	62	81	65	93	67	117	77	820	3
Garden	24	20	10	9	12	24	114	86	105	84	54	34	576	2
Holiday	37	10	13	17	25	18	29	27	39	40	52	37	344	1
Public park/playground	9	***	***	10	8	16	38	49	37	30	51	30	288	1
Nursery	***	18	8	12	***	30	13	21	20	16	11	18	176	1
Public building	14	23	13	13	16	15	14	22	10	13	11	10	174	1
Hospital	***	12	6	***	6	9	6	16	11	7	10	11	102	0
Prison	6	5	7	***	5	9	6	6	5	***	5	***	64	0
Special event	7	6	***	***	***	***	***	***	6	9	5	***	49	0
Public transport	***	***	***	***	***	***	5	***	***	***	***	***	24	0
Bus station	***	***	***	***	***	***	***	***	***	***	***	***	15	0
<b>Total</b>	<b>2550</b>	<b>2491</b>	<b>2584</b>	<b>2723</b>	<b>2170</b>	<b>2607</b>	<b>2900</b>	<b>2853</b>	<b>2769</b>	<b>2660</b>	<b>2572</b>	<b>2584</b>	<b>31463</b>	<b>100</b>

**Table 3: ED injury attendances by discharge destination and month, October 2009 to September 2010<sup>4</sup>**

Discharge destination	Oct	Nov	Dec	Jan	Feb	Mar	Apr	May	Jun	Jul	Aug	Sep	Total	%
Discharged - no follow-up	1419	1385	1401	1431	1207	1429	1568	1530	1445	1490	1316	1312	16933	54
Discharged - follow-up by GP	310	285	229	321	238	290	351	377	388	359	371	411	3930	12
Fracture clinic	234	240	349	350	226	298	346	335	333	284	293	284	3572	11
Admitted RPH	265	275	320	305	229	248	274	260	243	232	258	275	3184	10
Left before being treated	104	92	63	103	65	93	96	88	94	57	91	64	1010	3
ED clinic	86	79	79	91	80	96	103	93	90	66	73	69	1005	3
Outpatient clinic	53	53	50	31	36	65	60	56	48	54	67	81	654	2
Other healthcare professional	42	41	52	49	42	49	51	61	46	33	25	14	505	2
Other	21	27	18	27	32	31	41	39	68	70	60	55	489	2
Left having refused treatment	8	8	10	10	9	***	6	***	7	8	6	7	86	0
Transferred to other HCP	***	***	***	***	***	***	***	5	6	7	10	***	51	0
Police custody	6	***	7	***	***	***	***	***	***	***	***	7	39	0
Admitted CDGH	***	***	***	***	***	***	***	***	***	***	***	***	5	0
<b>Total</b>	<b>2550</b>	<b>2491</b>	<b>2584</b>	<b>2723</b>	<b>2170</b>	<b>2607</b>	<b>2900</b>	<b>2853</b>	<b>2769</b>	<b>2660</b>	<b>2572</b>	<b>2584</b>	<b>31463</b>	<b>100</b>

## Assaults

**Table 4: ED assault attendances by age group and month, October 2009 to September 2010**

Age group	Oct	Nov	Dec	Jan	Feb	Mar	Apr	May	Jun	Jul	Aug	Sep	Total	%
Unknown	***	***	***	***	***	***	***	***	***	***	***	***	***	0
0-4	***	***	***	***	***	***	***	***	***	***	***	***	***	0
5-14	***	7	***	***	6	12	10	8	11	6	5	6	81	5
15-29	101	91	66	66	73	91	90	94	85	65	89	81	992	60
30-59	46	34	56	50	40	31	65	53	44	45	56	27	547	33
60 plus	***	***	***	***	***	***	***	***	***	***	***	***	25	2
<b>Total</b>	<b>155</b>	<b>136</b>	<b>127</b>	<b>121</b>	<b>120</b>	<b>138</b>	<b>168</b>	<b>157</b>	<b>144</b>	<b>117</b>	<b>151</b>	<b>114</b>	<b>1648</b>	<b>100</b>

<sup>2</sup> Educational establishment includes: educational establishment; school other; school; school playground; and, school sport. 'Public place' includes public place and playing out.

<sup>3</sup> Please note that all numbers less than five have been suppressed (with \*\*\*) in line with patient confidentiality and if there is only one number less than five in a category then two numbers will be suppressed to prevent back calculations from totals.

<sup>4</sup> 'Admitted to CDGH' includes: admitted; admitted to Chorley and South Ribble Hospital (CDGH); admitted to Healey/Yarrow Ward. 'Admitted to RPH' includes: admitted to Royal Preston Hospital (RPH); and, admitted to the Avondale Unit. 'Other' includes: primary care; other; dead on arrival; sea and waterway; and, died in department. HCP=Health care provider, OP=out-patient and GP=general practitioner.

Figure 3: Number of ED assault attendances by gender and month, October 2009 to September 2010

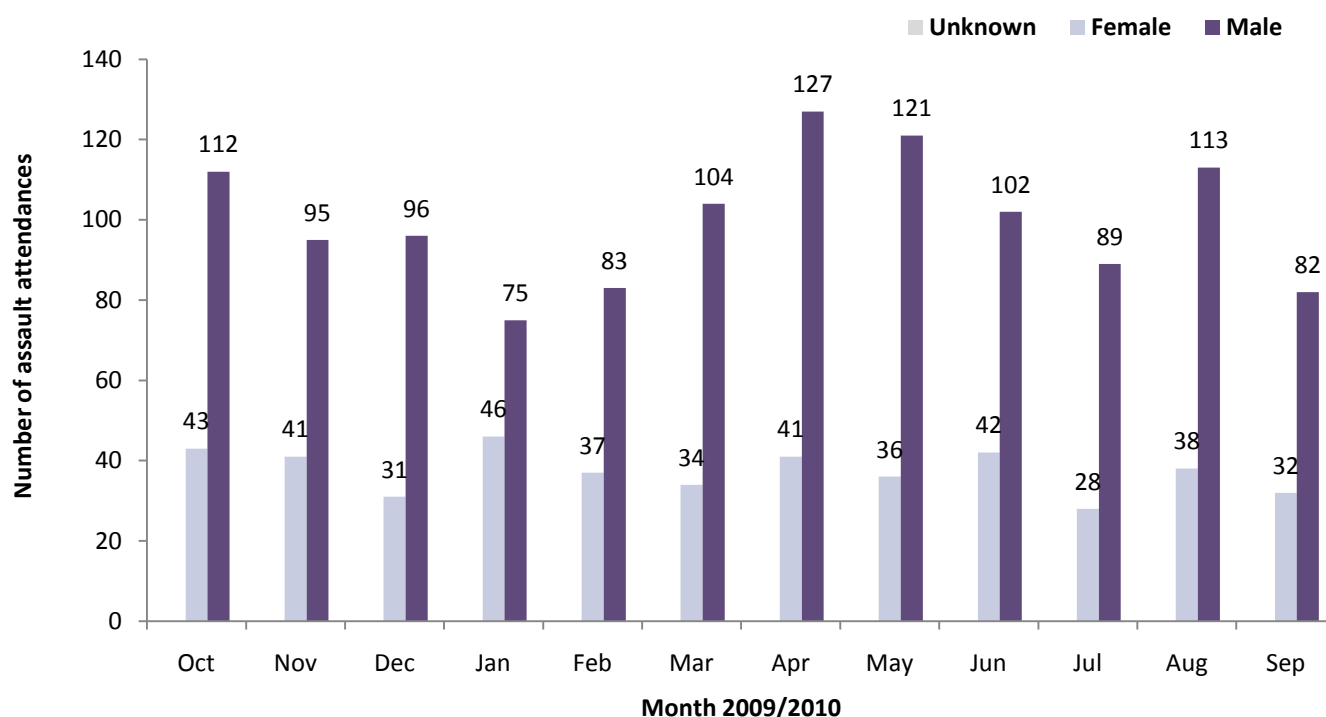


Table 5: ED assault attendances by incident location and month, October 2009 to September 2010<sup>5</sup>

Location	Oct	Nov	Dec	Jan	Feb	Mar	Apr	May	Jun	Jul	Aug	Sep	Total	%
Public place	121	78	79	78	76	81	107	101	87	83	91	74	1056	64
Home	16	21	23	20	15	20	26	26	18	8	31	14	238	14
Other	11	18	9	6	11	14	16	9	15	5	13	12	139	8
Work	***	8	***	***	6	***	11	***	7	6	5	***	63	4
Home other	***	***	8	5	***	7	***	***	9	6	***	***	53	3
Educational establishment	***	5	***	***	***	7	***	5	5	***	***	***	39	2
Public building	***	***	***	***	***	***	***	6	***	***	***	***	19	1
Public park/playground	***	***	***	***	***	***	***	***	***	***	***	***	16	1
Prison	***	***	***	***	***	***	***	***	***	***	***	***	10	1
Sport	***	***	***	***	***	***	***	***	***	***	***	***	6	0
Bus station	***	***	***	***	***	***	***	***	***	***	***	***	***	0
Garden	***	***	***	***	***	***	***	***	***	***	***	***	***	0
Holiday	***	***	***	***	***	***	***	***	***	***	***	***	***	0
Hospital	***	***	***	***	***	***	***	***	***	***	***	***	***	0
Nursery	***	***	***	***	***	***	***	***	***	***	***	***	***	0
Special event	***	***	***	***	***	***	***	***	***	***	***	***	***	0
<b>Total</b>	<b>155</b>	<b>136</b>	<b>127</b>	<b>121</b>	<b>120</b>	<b>138</b>	<b>168</b>	<b>157</b>	<b>144</b>	<b>117</b>	<b>151</b>	<b>114</b>	<b>1648</b>	<b>100</b>

Table 6: ED assault attendances by discharge destination and month, October 2009 to September 2010

Discharge destination	Oct	Nov	Dec	Jan	Feb	Mar	Apr	May	Jun	Jul	Aug	Sep	Total	%
Discharged	62	66	58	54	51	58	78	68	62	58	76	53	744	45
Follow-up	41	35	30	35	36	44	53	44	39	34	37	30	458	28
Admitted	22	19	23	17	21	22	23	24	21	9	21	19	241	15
Other	30	16	16	15	12	14	14	21	22	16	17	12	205	12
<b>Total</b>	<b>155</b>	<b>136</b>	<b>127</b>	<b>121</b>	<b>120</b>	<b>138</b>	<b>168</b>	<b>157</b>	<b>144</b>	<b>117</b>	<b>151</b>	<b>114</b>	<b>1648</b>	<b>100</b>

Published November 2010

Johnathan Rooney (Lancashire TIIG Officer)

Centre for Public Health, Liverpool John Moores University, 3<sup>rd</sup> Floor, Henry Cotton Campus, Liverpool, L3 2ET

Tel: 0151 231 4513 Email: [j.rooney@ljmu.ac.uk](mailto:j.rooney@ljmu.ac.uk)

Website: [www.tiig.info](http://www.tiig.info) (please note data requests should be made through the website)

<sup>5</sup> Educational establishment includes: educational establishment; school other; school; school playground; and, school sport. 'Public place' includes public place and playing out.