

## Royal Preston Hospital Emergency Department

### Monthly Bulletin: April 2010 to March 2011

This bulletin provides a breakdown of all injury attendances at Royal Preston Hospital Emergency Department (ED) between April 2010 and March 2011.

Between April 2010 and March 2011 there were 30,877 attendances to Royal Preston Hospital ED. The month with the highest attendance was April with 2,900 attendances (**Figure 1**). There were more male than female attendances presenting at Royal Preston Hospital ED (males=17,257; 56%).

**Figure 2** illustrates age group of ED attendances for each month. Three in ten (30%) of ED attendances were aged 30-59 (n=9,165) or were 15-29 years old (n=9,145).

**Table 1** details the injury group of ED attendances. In almost two-fifths (38%) of attendances, injury group was recorded as falls. Other injury accounted for 36% of attendances, road traffic collisions (RTC) 10%, sports injury 10% and assaults 5%.

**Table 2** illustrates the location of incident for patients attending the Royal Preston Hospital ED. The primary locations of injury were home (31%) and public place (30%). The discharge destination for injury attendances is displayed in **Table 3**. It indicates that over half (52%) of attendances were discharged with no follow-up treatment. Over one in

ten (14%) attendances were discharged into the care of their GP and 11% went to the fracture clinic.

#### Assault attendances

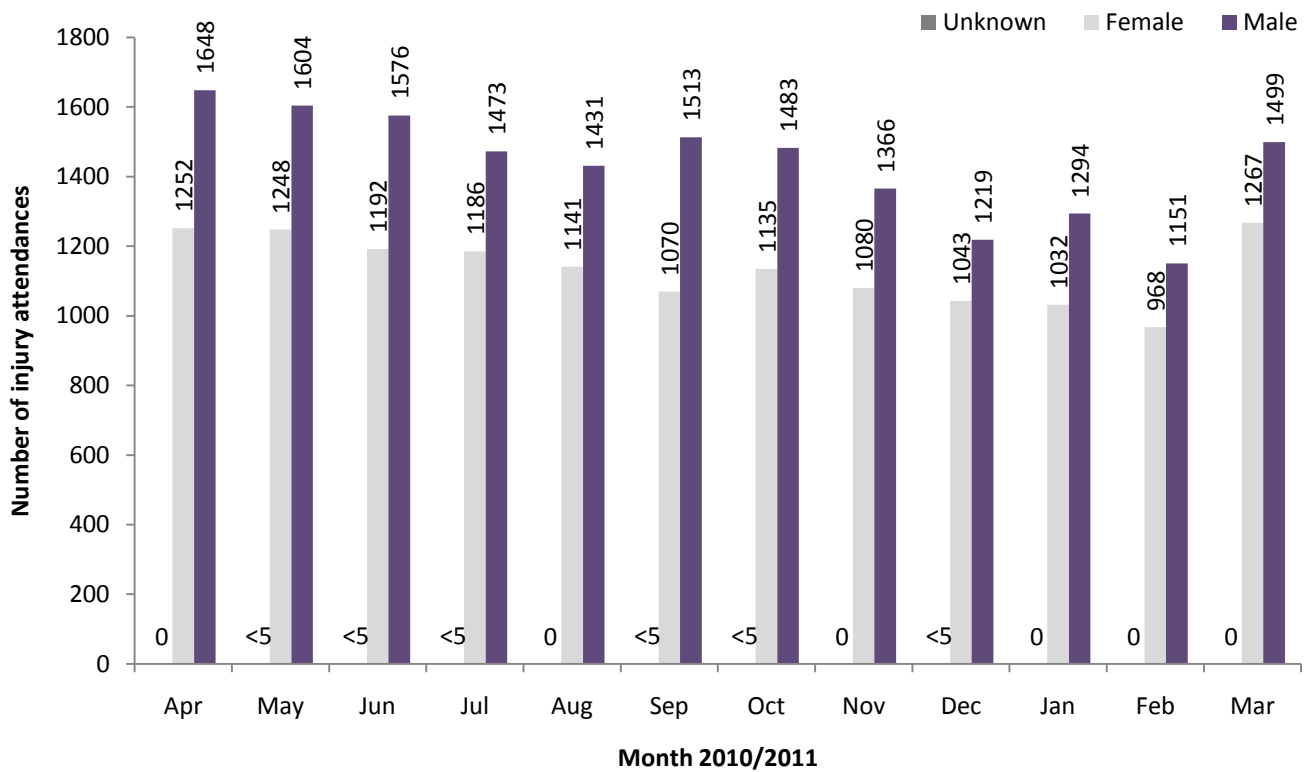
Between April 2010 and March 2011 there were 1,618 assault attendances to Royal Preston Hospital ED. The month with the highest attendance was April with 168 attendances (**Figure 3**). There were more male than female assault attendances presenting at Royal Preston Hospital ED (males=1,168; 72%).

**Table 4** details the age group of assault attendances for each month. The majority of ED assault attendances were aged 15-29, (n=965; 60%) and over a third (34%) were aged 30-59 (n=545).

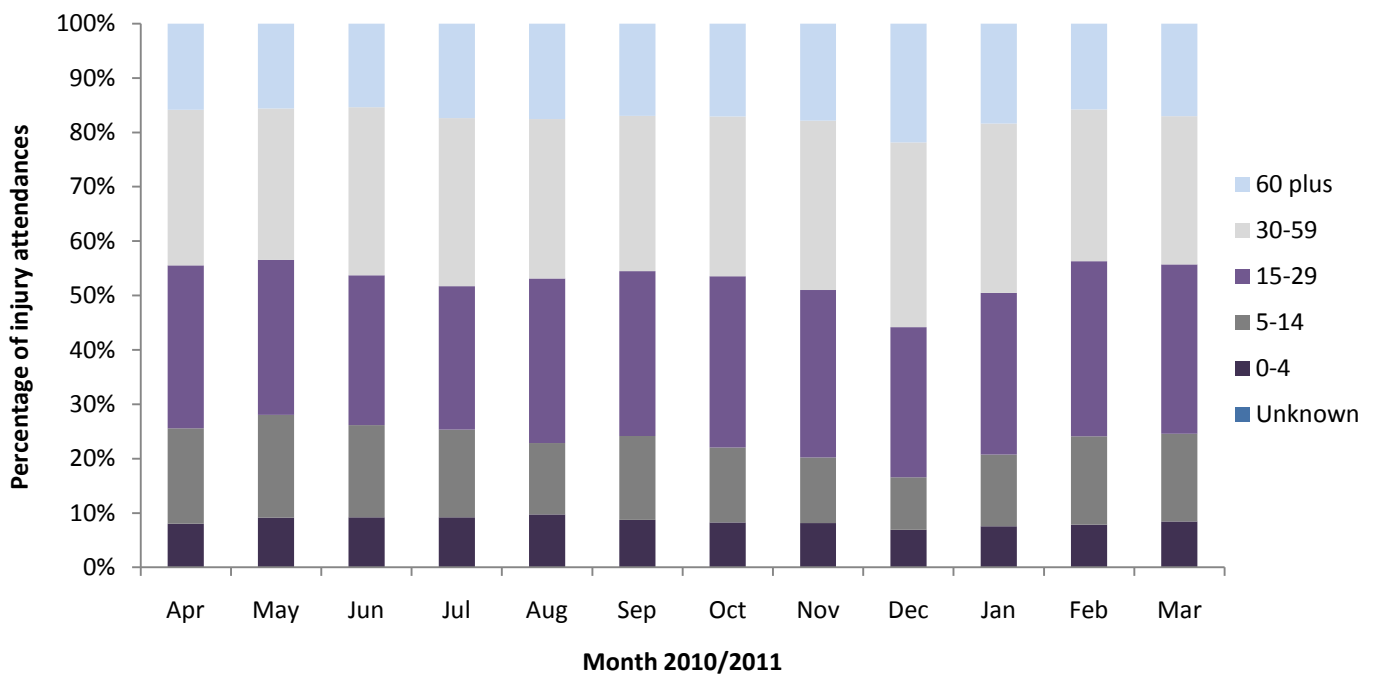
**Table 5** illustrates the incident location for assault attendances to Royal Preston Hospital ED. The primary incident locations for assault attendances were in a public place (64%), followed by home (14%) and other (9%).

The discharge destination for assault attendances is displayed in **Table 6**. It indicates that less than half (46%) of assault attendances were discharged with no follow-up treatment. Almost three in ten (29%) of assault attendances required follow-up treatment and 12% were admitted to hospital.

**Figure 1: Gender of ED injury attendances by month, April 2010 to March 2011**



**Figure 2: Percentage of ED injury attendances by age group and month, April 2010 to March 2011**



**Table 1: ED injury attendances by injury group and month, April 2010 to March 2011<sup>1</sup>**

| Injury group         | Apr         | May         | Jun         | Jul         | Aug         | Sep         | Oct         | Nov         | Dec         | Jan         | Feb         | Mar         | Total        | %          |
|----------------------|-------------|-------------|-------------|-------------|-------------|-------------|-------------|-------------|-------------|-------------|-------------|-------------|--------------|------------|
| Fall                 | 1028        | 1107        | 991         | 999         | 1012        | 964         | 949         | 953         | 1142        | 990         | 721         | 1025        | 11881        | 38         |
| Other injury         | 1130        | 1057        | 1124        | 1059        | 947         | 907         | 943         | 853         | 632         | 735         | 760         | 994         | 11141        | 36         |
| RTC                  | 245         | 233         | 260         | 261         | 263         | 279         | 236         | 282         | 249         | 244         | 230         | 227         | 3009         | 10         |
| Sports injury        | 311         | 276         | 229         | 206         | 175         | 292         | 308         | 224         | 97          | 221         | 250         | 381         | 2970         | 10         |
| Assault              | 168         | 157         | 144         | 117         | 151         | 114         | 159         | 116         | 127         | 117         | 136         | 112         | 1618         | 5          |
| Deliberate self-harm | 18          | 23          | 21          | 18          | 24          | 28          | 24          | 18          | 16          | 19          | 22          | 27          | 258          | 1          |
| <b>Total</b>         | <b>2900</b> | <b>2853</b> | <b>2769</b> | <b>2660</b> | <b>2572</b> | <b>2584</b> | <b>2619</b> | <b>2446</b> | <b>2263</b> | <b>2326</b> | <b>2119</b> | <b>2766</b> | <b>30877</b> | <b>100</b> |

<sup>1</sup> Please note percentages might not add to one hundred due to rounding.

**Table 2: ED injury attendances by incident location and month, April 2010 to March 2011<sup>23</sup>**

| Location                  | Apr         | May         | Jun         | Jul         | Aug         | Sep         | Oct         | Nov         | Dec         | Jan         | Feb         | Mar         | Total        | %          |
|---------------------------|-------------|-------------|-------------|-------------|-------------|-------------|-------------|-------------|-------------|-------------|-------------|-------------|--------------|------------|
| Home                      | 852         | 839         | 817         | 856         | 858         | 801         | 829         | 779         | 688         | 691         | 686         | 874         | 9570         | 31         |
| Public place              | 775         | 860         | 784         | 791         | 770         | 688         | 720         | 764         | 904         | 776         | 603         | 727         | 9162         | 30         |
| Sport                     | 294         | 240         | 212         | 197         | 182         | 254         | 264         | 199         | 83          | 180         | 222         | 312         | 2639         | 9          |
| Work                      | 218         | 224         | 233         | 255         | 200         | 220         | 222         | 262         | 159         | 201         | 173         | 229         | 2596         | 8          |
| Other                     | 307         | 221         | 268         | 165         | 239         | 231         | 231         | 130         | 214         | 155         | 131         | 205         | 2497         | 8          |
| Educational establishment | 147         | 170         | 129         | 123         | ***         | 165         | 171         | 162         | ***         | 174         | 175         | 220         | 1733         | 6          |
| Other persons home        | 81          | 65          | 93          | 67          | 117         | 77          | 54          | 53          | 53          | 64          | 47          | 66          | 837          | 3          |
| Garden                    | 114         | 86          | 105         | 84          | 54          | 34          | 29          | 11          | 22          | 15          | 19          | 40          | 613          | 2          |
| Holiday                   | 29          | 27          | 39          | 40          | 52          | 37          | 29          | 11          | 11          | 28          | 16          | 20          | 339          | 1          |
| Public park/playground    | 38          | 49          | 37          | 30          | 51          | 30          | 21          | 8           | 5           | 5           | 7           | 25          | 306          | 1          |
| Public building           | 14          | 22          | 10          | 13          | 11          | 10          | 21          | 32          | 15          | 15          | 15          | 10          | 188          | 1          |
| Nursery                   | 13          | 21          | 20          | 16          | 11          | 18          | 14          | 16          | ***         | 12          | ***         | 20          | 175          | 1          |
| Hospital                  | 6           | 16          | 11          | 7           | 10          | 11          | 10          | 6           | 5           | 5           | 11          | 6           | 104          | 0          |
| Prison                    | 6           | 6           | 5           | ***         | 5           | ***         | ***         | 7           | ***         | ***         | ***         | 7           | 50           | 0          |
| Special event             | ***         | ***         | 6           | 9           | 5           | ***         | ***         | ***         | ***         | ***         | ***         | ***         | 40           | 0          |
| Public transport          | 5           | ***         | ***         | ***         | ***         | ***         | ***         | ***         | ***         | ***         | ***         | ***         | 19           | 0          |
| Bus station               | ***         | ***         | ***         | ***         | ***         | ***         | ***         | ***         | ***         | ***         | ***         | ***         | 9            | 0          |
| <b>Total</b>              | <b>2900</b> | <b>2853</b> | <b>2769</b> | <b>2660</b> | <b>2572</b> | <b>2584</b> | <b>2619</b> | <b>2446</b> | <b>2263</b> | <b>2326</b> | <b>2119</b> | <b>2766</b> | <b>30877</b> | <b>100</b> |

**Table 3: ED injury attendances by discharge destination and month, April 2010 to March 2011<sup>4</sup>**

| Discharge destination         | Apr         | May         | Jun         | Jul         | Aug         | Sep         | Oct         | Nov         | Dec         | Jan         | Feb         | Mar         | Total        | %          |
|-------------------------------|-------------|-------------|-------------|-------------|-------------|-------------|-------------|-------------|-------------|-------------|-------------|-------------|--------------|------------|
| Discharged - no follow-up     | 1568        | 1530        | 1445        | 1490        | 1316        | 1312        | 1347        | 1310        | 1099        | 1204        | 1065        | 1406        | 16092        | 52         |
| Discharged - follow-up by GP  | 351         | 377         | 388         | 359         | 371         | 411         | 309         | 361         | 291         | 357         | 321         | 478         | 4374         | 14         |
| Fracture clinic               | 346         | 335         | 333         | 284         | 293         | 284         | 309         | 263         | 311         | 271         | 228         | 280         | 3537         | 11         |
| Admitted RPH                  | 274         | 260         | 243         | 232         | 258         | 275         | 269         | 236         | 249         | 230         | 210         | 258         | 2994         | 10         |
| ED clinic                     | 103         | 93          | 90          | 66          | 73          | 69          | 84          | 67          | 50          | 70          | 58          | 90          | 913          | 3          |
| Left before being treated     | 96          | 88          | 94          | 57          | 91          | 64          | 98          | 52          | 89          | 38          | 54          | 77          | 898          | 3          |
| Other                         | 41          | 39          | 68          | 70          | 60          | 55          | 77          | 48          | 71          | 74          | 83          | 73          | 759          | 2          |
| Outpatient clinic             | 60          | 56          | 48          | 54          | 67          | 81          | 73          | 64          | 60          | 47          | 45          | 63          | 718          | 2          |
| Other healthcare professional | 51          | 61          | 46          | 33          | 25          | 14          | 29          | 30          | 20          | 17          | 33          | 34          | 393          | 1          |
| Left having refused treatment | 6           | ***         | 7           | 8           | 6           | 7           | 6           | 10          | 14          | 6           | 11          | ***         | 88           | 0          |
| Transferred to other HCP      | ***         | 5           | 6           | 7           | 10          | 5           | 13          | ***         | ***         | 9           | 8           | ***         | 73           | 0          |
| Police custody                | ***         | ***         | ***         | ***         | ***         | ***         | ***         | ***         | 8           | ***         | ***         | ***         | ***          | 0          |
| Admitted CDGH                 | ***         | ***         | ***         | ***         | ***         | ***         | ***         | ***         | ***         | ***         | ***         | ***         | ***          | 0          |
| <b>Total</b>                  | <b>2900</b> | <b>2853</b> | <b>2769</b> | <b>2660</b> | <b>2572</b> | <b>2584</b> | <b>2619</b> | <b>2446</b> | <b>2263</b> | <b>2326</b> | <b>2119</b> | <b>2766</b> | <b>30877</b> | <b>100</b> |

## Assaults

**Table 4: ED assault attendances by age group and month, April 2010 to March 2011**

| Age group    | Apr        | May        | Jun        | Jul        | Aug        | Sep        | Oct        | Nov        | Dec        | Jan        | Feb        | Mar        | Total       | %          |
|--------------|------------|------------|------------|------------|------------|------------|------------|------------|------------|------------|------------|------------|-------------|------------|
| Unknown      | ***        | ***        | ***        | ***        | ***        | ***        | ***        | ***        | ***        | ***        | ***        | ***        | ***         | 0          |
| 0-4          | ***        | ***        | ***        | ***        | ***        | ***        | ***        | ***        | ***        | ***        | ***        | ***        | ***         | 0          |
| 5-14         | 10         | 8          | 11         | 6          | ***        | 6          | 8          | 6          | ***        | 6          | 12         | 6          | 84          | 5          |
| 15-29        | 90         | 94         | 85         | 65         | 89         | 81         | 95         | 69         | 76         | 81         | 79         | 61         | 965         | 60         |
| 30-59        | 65         | 53         | 44         | 45         | 56         | 27         | 53         | 39         | 48         | 29         | 42         | 44         | 545         | 34         |
| 60 plus      | ***        | ***        | ***        | ***        | ***        | ***        | ***        | ***        | ***        | ***        | ***        | ***        | 22          | 1          |
| <b>Total</b> | <b>168</b> | <b>157</b> | <b>144</b> | <b>117</b> | <b>151</b> | <b>114</b> | <b>159</b> | <b>116</b> | <b>127</b> | <b>117</b> | <b>136</b> | <b>112</b> | <b>1618</b> | <b>100</b> |

<sup>2</sup> Educational establishment includes: educational establishment; school other; school; school playground; and, school sport. 'Public place' includes public place and playing out.

<sup>3</sup> Please note that all numbers less than five have been suppressed (with \*\*\*) in line with patient confidentiality and if there is only one number less than five in a category then two numbers will be suppressed to prevent back calculations from totals.

<sup>4</sup> Admitted to CDGH includes: admitted; admitted to Chorley and South Ribble Hospital (CDGH); admitted to Healey/Yarrow Ward. Admitted to RPH includes: admitted to Royal Preston Hospital (RPH); and, admitted to the Avondale Unit. Other includes: primary care; other; dead on arrival; sea and waterway; and, died in department. HCP=Health care provider and GP=general practitioner.

Figure 3: Number of ED assault attendances by gender and month, April 2010 to March 2011

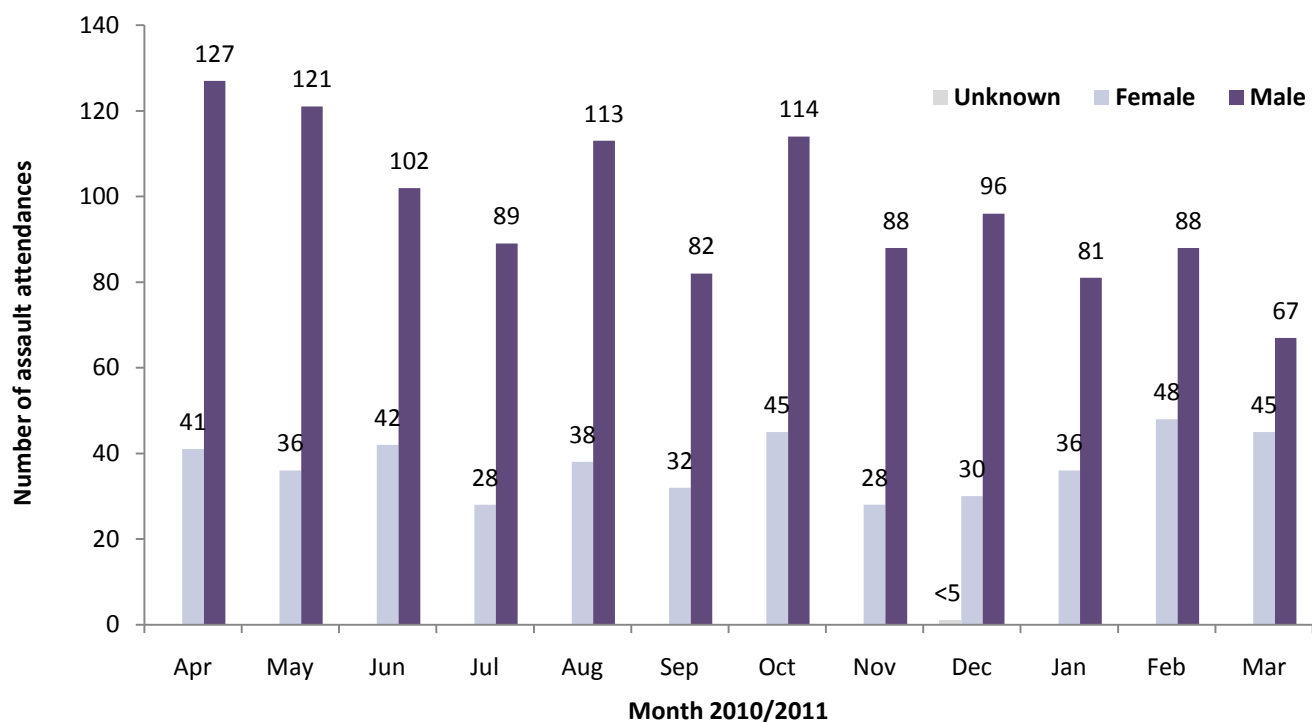


Table 5: ED assault attendances by incident location and month, April 2010 to March 2011

| Location                  | Apr        | May        | Jun        | Jul        | Aug        | Sep        | Oct        | Nov        | Dec        | Jan        | Feb        | Mar        | Total       | %          |
|---------------------------|------------|------------|------------|------------|------------|------------|------------|------------|------------|------------|------------|------------|-------------|------------|
| Public place              | 107        | 101        | 87         | 83         | 91         | 74         | 99         | 80         | 83         | 81         | 81         | 62         | 1029        | 64         |
| Home                      | 26         | 26         | 18         | 8          | 31         | 14         | 23         | 14         | 20         | 12         | 18         | 22         | 232         | 14         |
| Other                     | 16         | 9          | 15         | 5          | 13         | 12         | 21         | 8          | 14         | 7          | 15         | 13         | 148         | 9          |
| Work                      | 11         | ***        | 7          | 6          | 5          | ***        | 7          | ***        | ***        | 7          | 8          | ***        | 67          | 4          |
| Other persons home        | ***        | ***        | 9          | 6          | ***        | ***        | ***        | 5          | ***        | ***        | ***        | ***        | 47          | 3          |
| Educational establishment | ***        | 5          | 5          | ***        | ***        | ***        | ***        | ***        | ***        | ***        | 8          | 6          | 42          | 3          |
| Public park/playground    | ***        | ***        | ***        | ***        | ***        | ***        | ***        | ***        | ***        | ***        | ***        | ***        | 17          | 1          |
| Public building           | ***        | 6          | ***        | ***        | ***        | ***        | ***        | ***        | ***        | ***        | ***        | ***        | 15          | 1          |
| Prison                    | ***        | ***        | ***        | ***        | ***        | ***        | ***        | ***        | ***        | ***        | ***        | ***        | 9           | 1          |
| Sport                     | ***        | ***        | ***        | ***        | ***        | ***        | ***        | ***        | ***        | ***        | ***        | ***        | 5           | 0          |
| Holiday                   | ***        | ***        | ***        | ***        | ***        | ***        | ***        | ***        | ***        | ***        | ***        | ***        | ***         | 0          |
| Hospital                  | ***        | ***        | ***        | ***        | ***        | ***        | ***        | ***        | ***        | ***        | ***        | ***        | ***         | 0          |
| Special event             | ***        | ***        | ***        | ***        | ***        | ***        | ***        | ***        | ***        | ***        | ***        | ***        | ***         | 0          |
| <b>Total</b>              | <b>168</b> | <b>157</b> | <b>144</b> | <b>117</b> | <b>151</b> | <b>114</b> | <b>159</b> | <b>116</b> | <b>127</b> | <b>117</b> | <b>136</b> | <b>112</b> | <b>1618</b> | <b>100</b> |

Table 6: ED assault attendances by discharge destination and month, April 2010 to March 2011

| Discharge destination | Apr        | May        | Jun        | Jul        | Aug        | Sep        | Oct        | Nov        | Dec        | Jan        | Feb        | Mar        | Total       | %          |
|-----------------------|------------|------------|------------|------------|------------|------------|------------|------------|------------|------------|------------|------------|-------------|------------|
| Discharged            | 78         | 68         | 62         | 58         | 76         | 53         | 69         | 58         | 54         | 54         | 60         | 53         | 743         | 46         |
| Follow-up             | 53         | 44         | 39         | 34         | 37         | 30         | 47         | 34         | 44         | 32         | 43         | 35         | 472         | 29         |
| Admitted              | 23         | 24         | 21         | 9          | 21         | 19         | 17         | 10         | 11         | 19         | 17         | 11         | 202         | 12         |
| Other                 | 14         | 21         | 22         | 16         | 17         | 12         | 26         | 14         | 18         | 12         | 16         | 13         | 201         | 12         |
| <b>Total</b>          | <b>168</b> | <b>157</b> | <b>144</b> | <b>117</b> | <b>151</b> | <b>114</b> | <b>159</b> | <b>116</b> | <b>127</b> | <b>117</b> | <b>136</b> | <b>112</b> | <b>1618</b> | <b>100</b> |

Published June 2011

Johnathan Rooney (TIIG Officer)

Centre for Public Health, Liverpool John Moores University, 2<sup>nd</sup> Floor, Henry Cotton Campus, Liverpool, L3 2ET

Tel: 0151 231 4513 Email: [j.rooney@ljmu.ac.uk](mailto:j.rooney@ljmu.ac.uk)

Website: [www.tiig.info](http://www.tiig.info) (please note data requests should be made through the website)