

## Royal Preston Hospital Emergency Department

### Monthly Bulletin: October 2010 to September 2011

This bulletin provides a breakdown of all injury attendances at Royal Preston Hospital Emergency Department (ED) between October 2010 and September 2011.

Between October 2010 and September 2011 there were 30,208 attendances to Royal Preston Hospital ED. The month with the highest attendance was March with 2,766 attendances (**Figure 1**). There were more male than female attendances presenting at Royal Preston Hospital ED (males=16,868; 56%).

**Figure 2** illustrates age group of ED attendances for each month. For all injuries the highest proportions of attendances were for persons aged 15-29 (n=8,938; 30%) and 30-59 (n=8,872; 29%) years old.

**Table 1** details the injury group of ED attendances. In two-fifths (40%) of attendances, injury group was recorded as falls. Other injury accounted for 35% of attendances, road traffic collisions (RTC) 10%, sports injury 10% and assaults 5%.

**Table 2** illustrates the location of incident for patients attending the Royal Preston Hospital ED. The primary locations of injury were public place (31%) and home (31%). The discharge destination for injury attendances is displayed in **Table 3**. It indicates that half (50%) of attendances were discharged with no follow-up treatment. Nearly a

fifth (16%) of attendances were discharged into the care of their GP and 11% went to the fracture clinic.

#### Assault attendances

Between October 2010 and September 2011 there were 1,596 assault attendances to Royal Preston Hospital ED. The month with the highest attendance was September with 170 attendances (**Figure 3**). There were more male than female assault attendances presenting at Royal Preston Hospital ED (males=1,147; 72%).

**Table 4** details the age group of assault attendances for each month. The majority of ED assault attendances were aged 15-29, (n=944; 59%) and over a third (34%) were aged 30-59 (n=543) years.

**Table 5** illustrates the incident location for assault attendances to Royal Preston Hospital ED. The primary incident locations for assault attendances were in a public place (66%), followed by home (14%) and other (9%).

The discharge destination for assault attendances is displayed in **Table 6**. It indicates that nearly half (46%) of assault attendances were discharged with no follow-up treatment. Almost a third (32%) of assault attendances required follow-up treatment and 10% were admitted to hospital.

Figure 1: Gender of ED injury attendances by month, October 2010 to September 2011

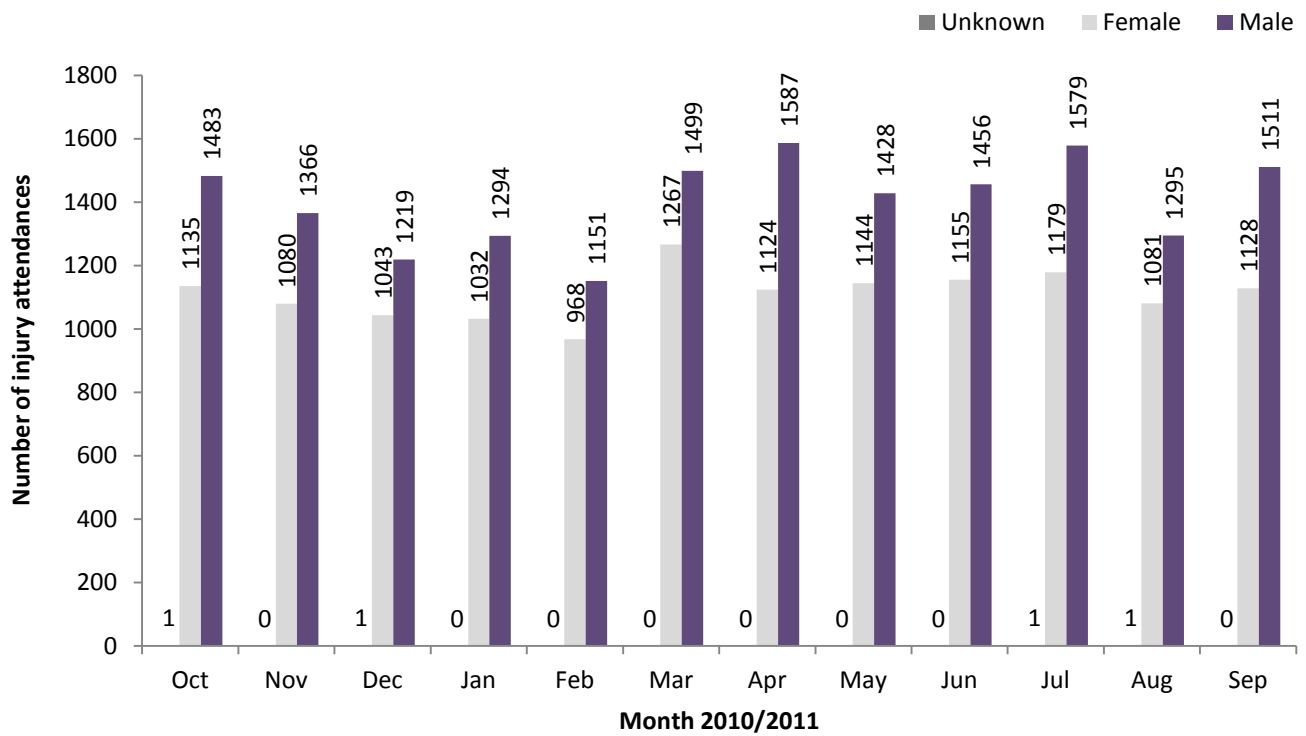


Figure 2: Percentage of ED injury attendances by age group and month, October 2010 to September 2011

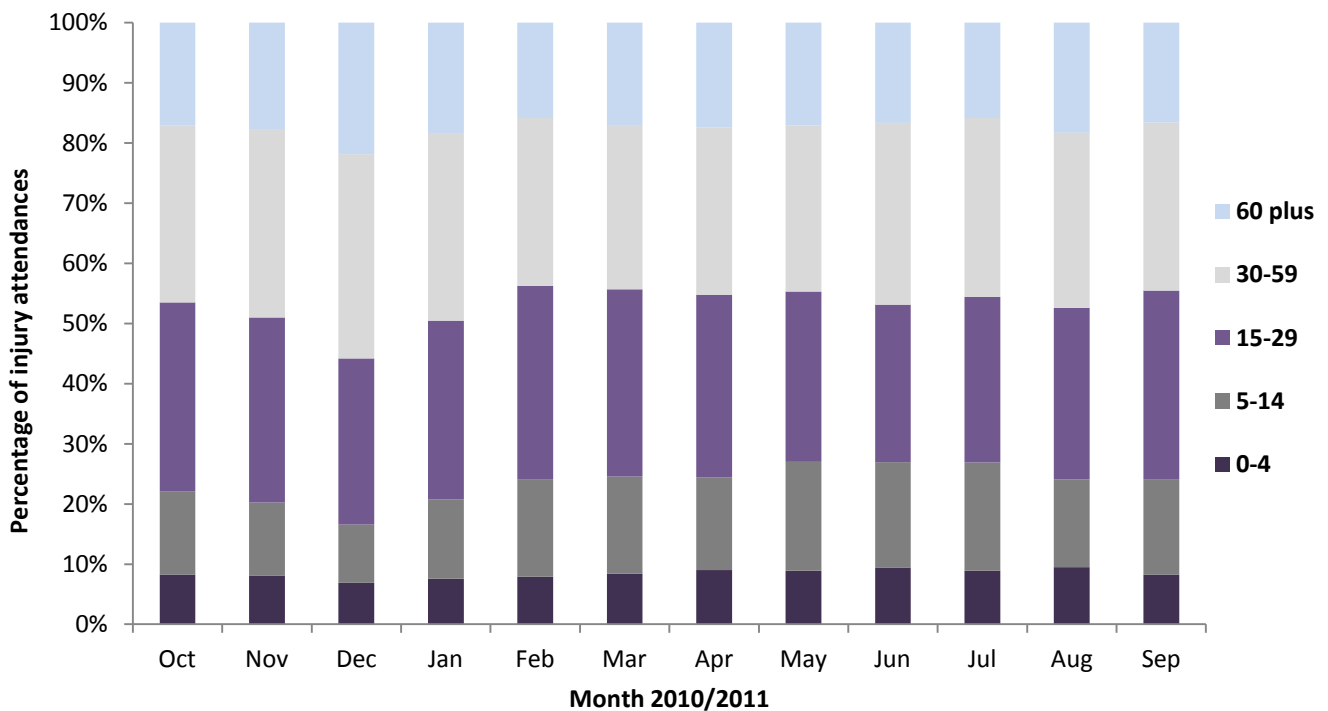


Table 1: ED injury attendances by injury group and month, October 2010 to September 2011<sup>1</sup>

Injury group	Oct	Nov	Dec	Jan	Feb	Mar	Apr	May	Jun	Jul	Aug	Sep	Total	%
Fall	949	953	1142	990	721	1025	1078	1049	1047	1094	950	966	11964	40
Other injury	943	853	632	735	760	994	917	874	952	1079	893	940	10572	35
Sports injury	308	224	97	221	250	381	294	259	234	208	178	267	2921	10
RTC	236	282	249	244	230	227	238	251	234	215	217	277	2900	10
Assault	159	116	127	117	136	112	152	122	123	139	123	170	1596	5
Deliberate self-harm	24	18	16	19	22	27	32	17	21	24	16	19	255	1
<b>Total</b>	<b>2619</b>	<b>2446</b>	<b>2263</b>	<b>2326</b>	<b>2119</b>	<b>2766</b>	<b>2711</b>	<b>2572</b>	<b>2611</b>	<b>2759</b>	<b>2377</b>	<b>2639</b>	<b>30208</b>	<b>100</b>

<sup>1</sup> Please note percentages might not add to one hundred due to rounding.

**Table 2: ED injury attendances by incident location and month, October 2010 to September 2011<sup>23</sup>**

Location	Oct	Nov	Dec	Jan	Feb	Mar	Apr	May	Jun	Jul	Aug	Sep	Total	%
Public place	720	764	904	776	603	727	873	785	785	869	777	804	9387	31
Home	829	779	688	691	686	874	778	787	777	849	803	767	9308	31
Sport	264	199	83	180	222	312	276	234	229	236	175	239	2649	9
Work	222	262	159	201	173	229	189	197	221	230	198	223	2504	8
Other	231	130	214	155	131	205	172	154	166	142	146	200	2046	7
Educational establishment	171	162	94	174	175	220	89	160	132	113	6	177	1673	6
Other persons home	54	53	53	64	47	66	90	83	78	84	69	71	812	3
Garden	29	11	22	15	19	40	111	66	78	77	66	43	577	2
Holiday	29	11	11	28	16	20	18	23	40	48	59	43	346	1
Public park/playground	21	8	5	5	7	25	67	29	42	55	31	28	323	1
Public building	21	32	15	15	15	10	17	24	22	15	16	11	213	1
Nursery	14	16	***	12	10	20	<10	10	17	12	13	10	147	0
Hospital	10	6	5	5	11	6	8	8	5	10	10	5	89	0
Prison	***	7	***	***	***	7	5	***	6	5	***	10	54	0
Special event	***	***	***	***	***	***	5	7	9	14	***	***	54	0
Public transport	***	***	***	***	***	***	***	***	***	***	***	***	15	0
Bus station	***	***	***	***	***	***	***	***	***	***	***	***	11	0
<b>Total</b>	<b>2619</b>	<b>2446</b>	<b>2263</b>	<b>2326</b>	<b>2119</b>	<b>2766</b>	<b>2711</b>	<b>2572</b>	<b>2611</b>	<b>2759</b>	<b>2377</b>	<b>2639</b>	<b>30208</b>	<b>100</b>

**Table 3: ED injury attendances by discharge destination and month, October 2010 to September 2011<sup>4</sup>**

Discharge destination	Oct	Nov	Dec	Jan	Feb	Mar	Apr	May	Jun	Jul	Aug	Sep	Total	%
Discharged - no follow-up	1347	1310	1099	1204	1065	1406	1275	1288	1265	1258	1284	1386	15187	50
Discharged - follow-up by GP	309	361	291	357	321	478	478	426	469	531	338	367	4726	16
Fracture clinic	309	263	311	271	228	280	284	269	264	302	258	276	3315	11
Admitted RPH	269	236	249	230	210	258	303	231	227	268	202	235	2918	10
Other	77	48	71	74	83	73	85	75	72	83	83	77	901	3
ED clinic	84	67	50	70	58	90	76	83	92	74	75	82	901	3
Left before being treated	98	52	89	38	54	77	85	87	81	109	37	75	882	3
Outpatient clinic	73	64	60	47	45	63	69	67	76	74	55	67	760	3
Other healthcare professional	29	30	20	17	33	34	36	29	35	25	30	49	367	1
Left having refused treatment	6	10	14	6	11	***	11	9	13	12	***	***	102	0
Transferred to other HCP	13	***	***	9	8	***	***	7	12	19	8	15	100	0
Police custody	<6	***	8	***	***	***	7	***	<6	***	***	6	<49	0
Admitted CDGH	***	***	***	***	***	***	***	***	***	***	***	***	***	0
<b>Total</b>	<b>2619</b>	<b>2446</b>	<b>2263</b>	<b>2326</b>	<b>2119</b>	<b>2766</b>	<b>2711</b>	<b>2572</b>	<b>2611</b>	<b>2759</b>	<b>2377</b>	<b>2639</b>	<b>30208</b>	<b>100</b>

## Assaults

**Table 4: ED assault attendances by age group and month, October 2010 to September 2011**

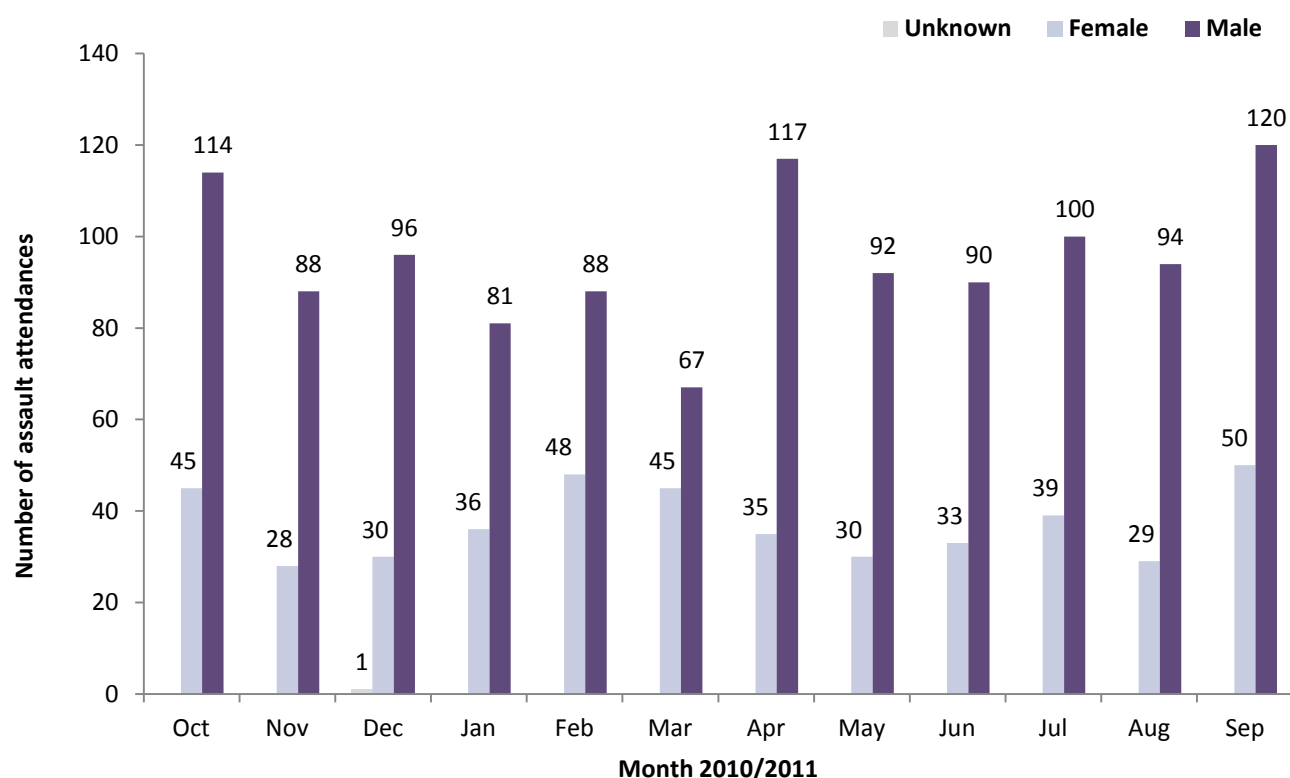
Age group	Oct	Nov	Dec	Jan	Feb	Mar	Apr	May	Jun	Jul	Aug	Sep	Total	%
0-4	***	***	***	***	***	***	***	***	***	***	***	***	***	0
5-14	8	6	***	6	12	6	8	8	***	11	***	7	79	5
15-29	95	69	76	81	79	61	87	65	82	77	76	96	944	59
30-59	53	39	48	29	42	44	53	44	37	47	43	64	543	34
60 plus	***	***	***	***	***	***	***	<6	***	***	***	***	<30	2
<b>Total</b>	<b>159</b>	<b>116</b>	<b>127</b>	<b>117</b>	<b>136</b>	<b>112</b>	<b>152</b>	<b>122</b>	<b>123</b>	<b>139</b>	<b>123</b>	<b>170</b>	<b>1596</b>	<b>100</b>

<sup>2</sup> Educational establishment includes: educational establishment; school other; school; school playground; and, school sport. 'Public place' includes public place and playing out.

<sup>3</sup> Please note that all numbers less than five have been suppressed (with \*\*\*) in line with patient confidentiality and if there is only one number less than five in a category then two numbers will be suppressed to prevent back calculations from totals.

<sup>4</sup> Admitted to CDGH includes: admitted; admitted to Chorley and South Ribble Hospital (CDGH); admitted to Healey/Yarrow Ward. Admitted to RPH includes: admitted to Royal Preston Hospital (RPH); and, admitted to the Avondale Unit. Other includes: primary care; other; dead on arrival; sea and waterway; and, died in department. HCP=Health care provider and GP=general practitioner.

**Figure 3: Number of ED assault attendances by gender and month, October 2010 to September 2011**



**Table 5: ED assault attendances by incident location and month, October 2010 to September 2011<sup>5</sup>**

Location	Oct	Nov	Dec	Jan	Feb	Mar	Apr	May	Jun	Jul	Aug	Sep	Total	%
Public place	99	80	83	81	81	62	104	67	82	101	103	106	1049	66
Home	23	14	20	12	18	22	16	18	18	21	15	25	222	14
Other	21	8	14	7	15	13	15	19	8	***	***	14	138	9
Work	7	***	***	7	8	***	5	5	***	***	***	10	60	4
Other persons home	***	5	***	***	***	***	5	***	5	6	***	5	46	3
Educational establishment	***	***	***	***	8	6	***	***	***	***	***	***	35	2
Public building	***	***	***	***	***	***	***	***	***	***	***	***	12	1
Public park/playground	***	***	***	***	***	***	***	***	***	***	***	***	11	1
Prison	***	***	***	***	***	***	***	***	***	***	***	***	9	1
Holiday	***	***	***	***	***	***	***	***	***	***	***	***	7	0
Garden	***	***	***	***	***	***	***	***	***	***	***	***	***	0
Hospital	***	***	***	***	***	***	***	***	***	***	***	***	***	0
Special event	***	***	***	***	***	***	***	***	***	***	***	***	***	0
Sport	***	***	***	***	***	***	***	***	***	***	***	***	***	0
<b>Total</b>	<b>159</b>	<b>116</b>	<b>127</b>	<b>117</b>	<b>136</b>	<b>112</b>	<b>152</b>	<b>122</b>	<b>123</b>	<b>139</b>	<b>123</b>	<b>170</b>	<b>1596</b>	<b>100</b>

**Table 6: ED assault attendances by discharge destination and month, October 2010 to September 2011**

Discharge destination	Oct	Nov	Dec	Jan	Feb	Mar	Apr	May	Jun	Jul	Aug	Sep	Total	%
Discharged	69	58	54	54	60	53	67	61	50	60	64	87	737	46
Follow-up	47	34	44	32	43	35	55	32	48	45	42	49	506	32
Other	26	14	18	12	16	13	19	15	15	20	8	22	198	12
Admitted	17	10	11	19	17	11	11	14	10	14	9	12	155	10
<b>Total</b>	<b>159</b>	<b>116</b>	<b>127</b>	<b>117</b>	<b>136</b>	<b>112</b>	<b>152</b>	<b>122</b>	<b>123</b>	<b>139</b>	<b>123</b>	<b>170</b>	<b>1596</b>	<b>100</b>

Published December 2011  
 Johnathan Rooney (TIIG Officer)  
 Centre for Public Health, Liverpool John Moores University, 2nd Floor, Henry Cotton Campus, Liverpool, L3 2ET  
 Tel: 0151 231 4513 Email: [j.rooney@ljmu.ac.uk](mailto:j.rooney@ljmu.ac.uk)  
 Website: [www.tiig.info](http://www.tiig.info) (please note data requests should be made through the website)

<sup>5</sup> Educational establishment includes: educational establishment; school other; school; school playground; and, school sport. 'Public place' includes public place and playing out.