



## MONTHLY BULLETIN: APRIL 2013 TO MARCH 2014

This bulletin provides a breakdown of all injury attendances to Royal Preston Hospital Emergency Department (ED) between April 2013 and March 2014.

In the twelve month period there were 28,206 injury attendances to Royal Preston Hospital ED. July 2013 had the highest number of attendances (n=2,755) compared to February 2014, the month with the fewest (n=1,906) (**Figure 1**).

There were more males than females attending the ED in 2013/14 (males=15,772; 56%) (**Figure 1**). Three in ten (30%) were aged between 30 and 59 years (n=8,360) followed by 28% aged between 15 and 29 years (n=7,764) (**Figure 2**).

**Table 1** shows the injury group of attendances between April 2013 and March 2014. Just over two in five (41%) injuries were sustained by a fall (n=11,532) and over a third (35%) were categorised as 'other' injury (n=9,775). One in ten (10%) injuries were caused by sport (n=2,917) and 9% caused by road traffic collisions (n=2,413).

A third (33%) of incidents occurred in the home (n=9,427) followed by just under a quarter (24%) in a public place (n=6,695) (**Table 2**). Furthermore, just under one in ten (9%) occurred at work (n=2,492) and 6% in an educational establishment (n=1,579).

The discharge destination for ED attendances is displayed in **Table 3**. Three-fifths (60%) of attendees were discharged from hospital with no follow-up treatment required (n=17,559) while 12% were referred to the fracture clinic (n=3,413) and 9% were admitted to Royal Preston Hospital or the Avondale Unit (n=2,572).

### ASSAULT ATTENDANCES

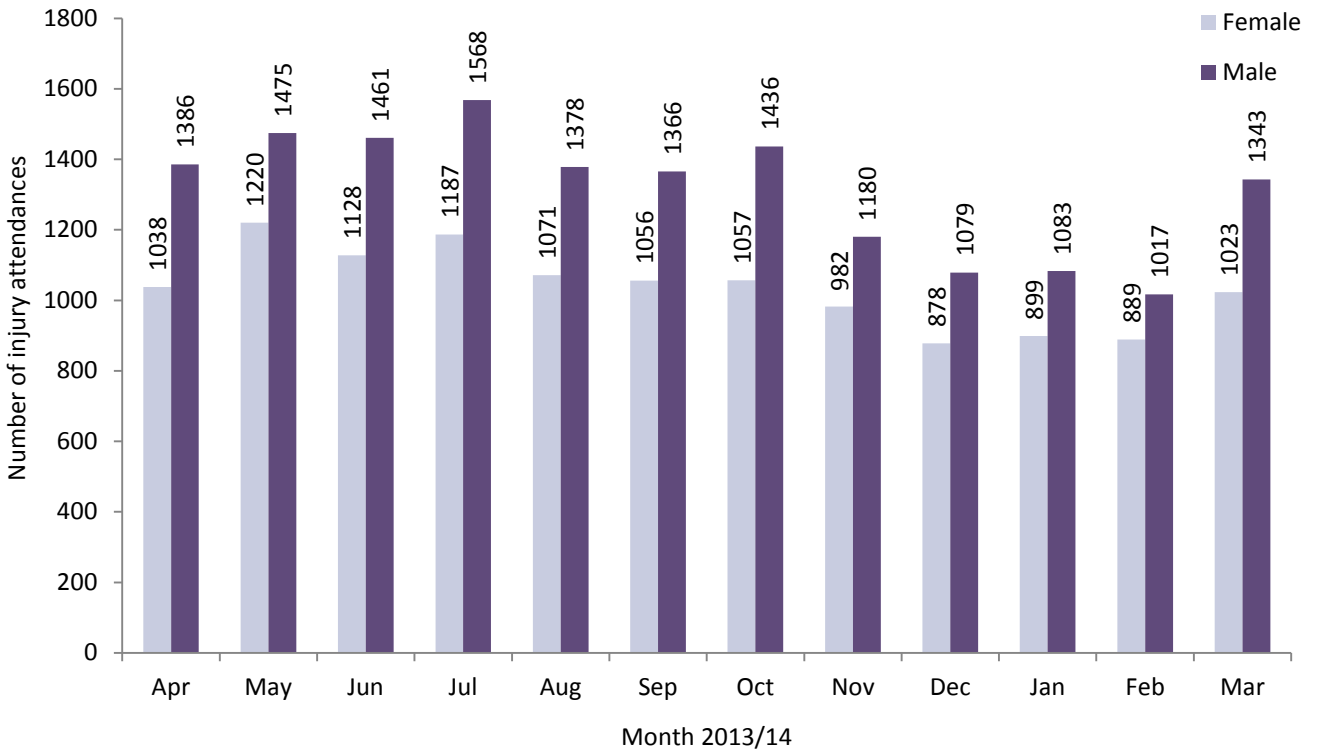
Between April 2013 and March 2014 there were 1,353 assault attendances to Royal Preston Hospital ED. The month with the highest number of attendances was December 2013 (n=142) (**Figure 3**).

Under three-quarters (73%) of assault attendees were male (males=993) (**Figure 3**), with over half (54%) aged between 15 and 29 years (n=736) and 38% aged between 30 and 59 years (n=518) (**Table 4**).

The assault location is shown in **Table 5**. Just over half (51%) of assaults occurred in a public place (n=684), while 16% occurred in the home (n=213) and 9% occurred in a public building (including pub/club/bar) (n=127).

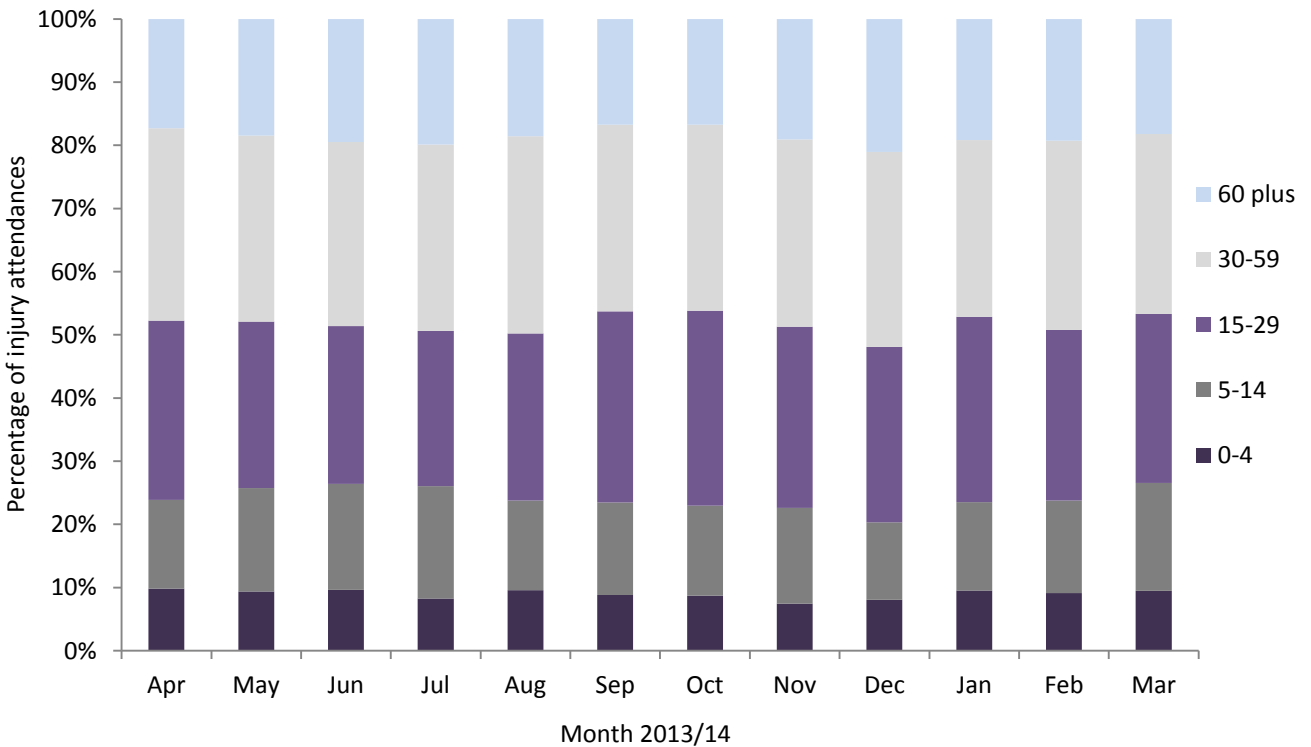
**Table 6** illustrates the disposal method of assault attendances in 2013/14. Over half (53%) were discharged from hospital with no follow-up treatment required (n=722) and a quarter (25%) were referred for follow-up treatment (n=338). One in ten (10%) assault attendees were admitted to hospital (n=131).

Figure 1: ED attendances by gender and month, April 2013 to March 2014<sup>^</sup>



<sup>^</sup> There were six records where the age was unknown; these have been omitted from the chart.

Figure 2: ED attendances by age group and month, April 2013 to March 2014



**Table 1: ED attendances by injury group and month, April 2013 to March 2014\***

Injury group	Apr	May	Jun	Jul	Aug	Sep	Oct	Nov	Dec	Jan	Feb	Mar	Total	%
Fall	922	1063	1056	1161	1038	930	923	910	844	872	855	958	11532	41%
Other injury	938	990	1012	1049	915	831	921	657	561	601	564	736	9775	35%
Sports injury	230	259	217	218	190	334	294	256	189	180	217	333	2917	10%
Road traffic collision	217	240	168	187	182	193	201	220	209	201	172	223	2413	9%
Assault	100	127	122	124	105	110	135	105	142	102	80	101	1353	5%
Deliberate self-harm	17	16	14	16	19	25	20	15	13	27	18	16	216	1%
<b>Total</b>	<b>2424</b>	<b>2695</b>	<b>2589</b>	<b>2755</b>	<b>2449</b>	<b>2423</b>	<b>2494</b>	<b>2163</b>	<b>1958</b>	<b>1983</b>	<b>1906</b>	<b>2367</b>	<b>28206</b>	<b>100%</b>

\* Due to low numbers, firework injuries (n=5) and major incident (n=<5) have been included in the 'other' injury category

**Table 2: ED attendances by incident location and month, April 2013 to March 2014<sup>1,2</sup>**

Incident location	Apr	May	Jun	Jul	Aug	Sep	Oct	Nov	Dec	Jan	Feb	Mar	Total	%
Home	831	866	834	945	818	760	822	694	678	718	711	750	9427	33%
Public place	583	633	637	730	632	521	545	503	485	490	386	550	6695	24%
Sport	217	257	199	231	213	300	266	227	161	160	191	302	2724	10%
Other	240	277	253	195	231	245	236	204	178	149	156	194	2558	9%
Work	241	229	210	194	225	236	254	201	159	173	180	190	2492	9%
Educational establishment	94	147	127	128	9	142	181	164	123	148	126	190	1579	6%
Home - other person's	55	77	53	61	68	49	50	66	56	56	43	45	679	2%
Garden	50	76	108	113	92	42	25	15	19	11	20	33	604	2%
Public building	36	24	33	22	33	29	40	30	56	35	44	38	420	1%
Holiday	22	39	45	50	58	57	22	14	12	15	11	20	365	1%
Public park/playground	27	38	37	53	45	12	21	9	***	6	<10	16	271	1%
Nursery	12	12	18	12	7	10	15	17	9	7	12	13	144	1%
Hospital	***	<10	11	6	6	7	9	7	10	6	8	7	89	0%
Prison	7	8	9	***	5	7	***	7	8	5	10	12	86	0%
Special event	***	***	8	9	<10	***	***	***	***	***	0	***	43	0%
Public transport	***	0	5	0	***	***	***	***	0	***	***	***	23	0%
Bus station	***	0	***	***	0	0	0	0	***	0	0	***	7	0%
<b>Total</b>	<b>2424</b>	<b>2695</b>	<b>2589</b>	<b>2755</b>	<b>2449</b>	<b>2423</b>	<b>2494</b>	<b>2163</b>	<b>1958</b>	<b>1983</b>	<b>1906</b>	<b>2367</b>	<b>28206</b>	<b>100%</b>

<sup>1</sup> 'Educational establishment' includes: educational establishment, school, school – other, school playground and school sport. 'Public place' includes: public place and playing out. 'Public building' includes: public building pub/club/bar - inside and pub/club/bar - outside.

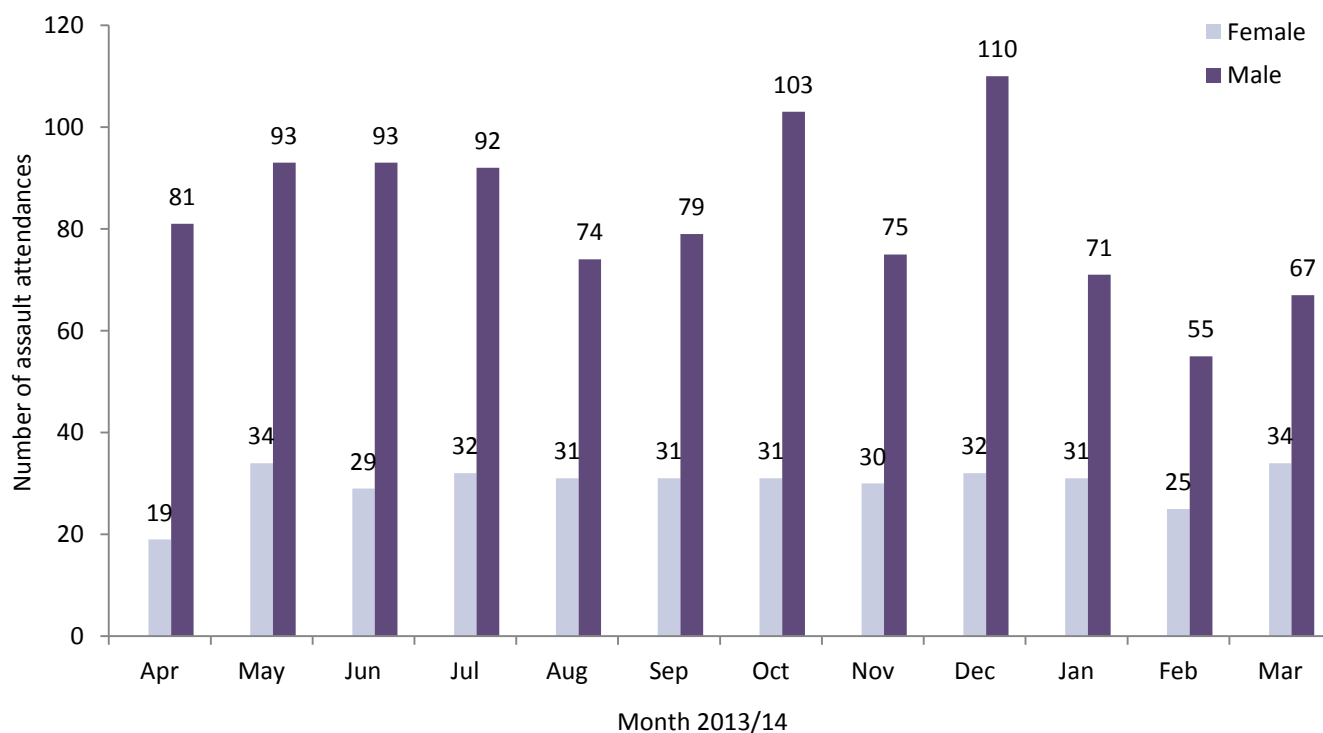
<sup>2</sup> Please note that all numbers less than five have been suppressed (with \*\*\*) in line with patient confidentiality. If there is only one number less than five in a category then two numbers have been suppressed to prevent back calculations from totals.

**Table 3: ED attendances by discharge destination and month, April 2013 to March 2014<sup>3,4</sup>**

Discharge destination	Apr	May	Jun	Jul	Aug	Sep	Oct	Nov	Dec	Jan	Feb	Mar	Total	%
Discharged - no follow-up	1439	1629	1540	1676	1540	1488	1580	1328	1207	1200	1193	1471	17291	61%
Referred to fracture clinic	280	346	334	324	266	288	281	255	218	219	233	287	3331	12%
Admitted to RPH	196	218	218	274	234	222	215	211	217	201	181	193	2580	9%
Discharged - follow-up by GP	178	162	180	150	145	127	113	103	101	121	85	126	1591	6%
Referred to other outpatient clinic	66	56	64	52	57	67	83	57	57	70	54	79	762	3%
Other	67	83	79	86	70	55	40	57	38	52	52	64	743	3%
Left before being treated	92	93	58	81	37	57	56	47	43	39	36	48	687	2%
Referred to ED clinic	60	59	67	62	49	70	58	49	44	36	30	41	625	2%
Referred to other healthcare professional	36	36	41	36	37	34	49	43	23	34	34	37	440	2%
Left having refused treatment	5	***	***	5	7	11	8	9	***	***	***	***	61	0%
Transferred to other HCP	***	8	***	<10	***	***	8	***	***	7	***	13	58	0%
Police custody	***	***	***	***	***	***	***	***	***	0	***	***	30	0%
Admitted to CDGH	0	0	0	0	0	0	***	0	***	***	***	***	7	0%
<b>Total</b>	<b>2424</b>	<b>2695</b>	<b>2589</b>	<b>2755</b>	<b>2449</b>	<b>2423</b>	<b>2494</b>	<b>2163</b>	<b>1958</b>	<b>1983</b>	<b>1906</b>	<b>2367</b>	<b>28206</b>	<b>100%</b>

**ASSAULTS**

**Figure 3: ED assault attendances by gender and month, April 2013 to March 2014**



<sup>3</sup> Please note that all numbers less than five have been suppressed (with \*\*\*) in line with patient confidentiality. If there is only one number less than five in a category then two numbers have been suppressed to prevent back calculations from totals.

<sup>4</sup> 'Admitted to CDGH' includes: admitted, admitted to Chorley and South Ribble Hospital (CDGH) and admitted to Healey/Yarrow Ward. 'Admitted to RPH' includes: admitted to Royal Preston Hospital (RPH) and admitted to the Avondale Unit. 'Other' includes: primary care, other, dead on arrival and died in department. HCP = Health care provider.

**Table 4: ED assault attendances by age group and month, April 2013 to March 2014<sup>5</sup>**

Age group	Apr	May	Jun	Jul	Aug	Sep	Oct	Nov	Dec	Jan	Feb	Mar	Total	%
0-4	0	0	0	***	0	0	***	***	0	***	0	0	***	0%
5-14	6	<10	***	5	<10	***	***	***	***	7	7	<20	64	5%
15-29	57	70	69	62	57	59	78	64	78	56	43	43	736	54%
30-59	37	48	48	53	42	45	47	40	54	34	30	40	518	38%
60 plus	0	***	***	***	***	***	7	0	<10	***	0	***	<35	2%
<b>Total</b>	<b>100</b>	<b>127</b>	<b>122</b>	<b>124</b>	<b>105</b>	<b>110</b>	<b>135</b>	<b>105</b>	<b>142</b>	<b>102</b>	<b>80</b>	<b>101</b>	<b>1353</b>	<b>100%</b>

**Table 5: ED assault attendances by incident location and month, April 2013 to March 2014<sup>5,6</sup>**

Incident location	Apr	May	Jun	Jul	Aug	Sep	Oct	Nov	Dec	Jan	Feb	Mar	Total	%
Public place	56	70	67	72	48	66	72	55	63	47	30	38	684	51%
Home	15	15	22	13	17	10	25	16	20	20	25	15	213	16%
Other	16	16	12	8	12	17	13	9	11	12	7	16	149	11%
Public building	5	6	9	11	13	5	9	9	29	8	14	9	127	9%
Work	***	7	5	8	***	5	12	***	7	6	***	6	68	5%
Home - other person's	***	5	***	***	5	***	***	6	5	***	***	5	40	3%
Prison	***	***	***	***	***	***	***	***	***	0	***	***	29	2%
Educational establishment	0	***	***	***	0	***	0	***	***	***	0	7	24	2%
Public park/playground	0	***	***	***	***	0	0	***	0	0	0	0	9	1%
Holiday	0	0	0	***	0	***	0	0	0	0	0	0	***	0%
Garden	0	0	0	***	0	0	0	0	0	0	0	0	***	0%
Hospital	0	0	0	0	0	0	0	***	0	0	0	***	***	0%
Sport	0	0	0	0	***	***	0	0	0	0	0	0	***	0%
Special event	0	0	0	0	0	0	0	0	0	***	0	0	***	0%
<b>Total</b>	<b>100</b>	<b>127</b>	<b>122</b>	<b>124</b>	<b>105</b>	<b>110</b>	<b>135</b>	<b>105</b>	<b>142</b>	<b>102</b>	<b>80</b>	<b>101</b>	<b>1353</b>	<b>100%</b>

**Table 6: ED assault attendances by disposal method and month, April 2013 to March 2014<sup>†5</sup>**

Disposal method	Apr	May	Jun	Jul	Aug	Sep	Oct	Nov	Dec	Jan	Feb	Mar	Total	%
Discharged	54	69	56	66	59	64	67	58	72	59	43	55	722	53%
Follow-up	26	32	34	29	22	25	38	25	36	23	23	25	338	25%
Other	10	18	18	13	14	11	18	13	19	10	9	9	162	12%
Admitted	10	8	14	16	10	10	12	9	15	10	5	12	131	10%
<b>Total</b>	<b>100</b>	<b>127</b>	<b>122</b>	<b>124</b>	<b>105</b>	<b>110</b>	<b>135</b>	<b>105</b>	<b>142</b>	<b>102</b>	<b>80</b>	<b>101</b>	<b>1353</b>	<b>100%</b>

† Due to low numbers, those who died in the department have been included in the 'other' category (n=<5).

Published May 2014

Karen A Critchley (née Swarbrick) – TIIG Researcher/Analyst

Centre for Public Health, Faculty of Education, Health and Community, Liverpool John Moores University,  
2nd Floor, Henry Cotton Building, Liverpool L3 2ET

T: 0151 231 4498 | E: [k.a.critchley@ljmu.ac.uk](mailto:k.a.critchley@ljmu.ac.uk) | W: [www.tiig.info](http://www.tiig.info) and [www.cph.org.uk](http://www.cph.org.uk) | Twitter: [www.twitter.com/tiig\\_cph](https://twitter.com/tiig_cph)

<sup>5</sup> Please note that all numbers less than five have been suppressed (with \*\*\*) in line with patient confidentiality. If there is only one number less than five in a category then two numbers have been suppressed to prevent back calculations from totals.

<sup>6</sup> 'Educational establishment' includes: educational establishment, school, school – other, school playground and school sport. 'Public place' includes: public place and playing out. 'Public building' includes: public building pub/club/bar - inside and pub/club/bar - outside.