



# TIIG

INJURY SURVEILLANCE IN THE NORTH WEST OF ENGLAND

## ROYAL BLACKBURN HOSPITAL EMERGENCY DEPARTMENT AND URGENT CARE CENTRE AND BURNLEY GENERAL HOSPITAL URGENT CARE CENTRE

### MONTHLY BULLETIN: OCTOBER 2013 TO SEPTEMBER 2014

This bulletin provides a breakdown of all injury attendances to Royal Blackburn Hospital Emergency Department (ED) and Urgent Care Centre (UCC), and Burnley General Hospital UCC between October 2013 and September 2014.

During this twelve month period there were 66,682 injury attendances to the ED. The month with the highest number of attendances, calculated as a daily average, was June 2014 (220 per day) compared to January 2014, the month with the fewest (161 per day; **Figure 1**).

There were more males than females (males=35,763; 54%; **Figure 1**), and over a third (35%) were aged between 30 and 59 years (n=23,541) followed by just under three in ten (29%) aged between 15 and 29 years (n=19,068; **Figure 2**).

The injury group of ED and UCC attendances between October 2013 and September 2014 are detailed in **Table 1**. The majority (87%) were recorded as 'other' injury (n=57,860). Sports injury (n=3,392) and road traffic collisions (n=3,248) each accounted for 5% of injuries, followed by 3% of injuries caused by assault (n=1,919).

**Table 2** shows the referral source to the ED and UCCs. A third (33%) of attendees were brought in by others (n=22,271), while over a quarter (28%) self-referred (n=18,346) and one in five (20%) were brought in by a parent (n=13,393).

The discharge destination for injury attendances in the twelve month period is displayed in **Table 3**. Under two-fifths (38%) were discharged from hospital with no follow-up treatment required (n=25,044) and 15% were discharged to the care of their General Practitioner (GP) (n=9,764). Nine per cent of attendees were referred to the fracture/orthopaedic clinic (n=5,783) and 10% were discharged to a GP within Burnley General Hospital (n=6,984).

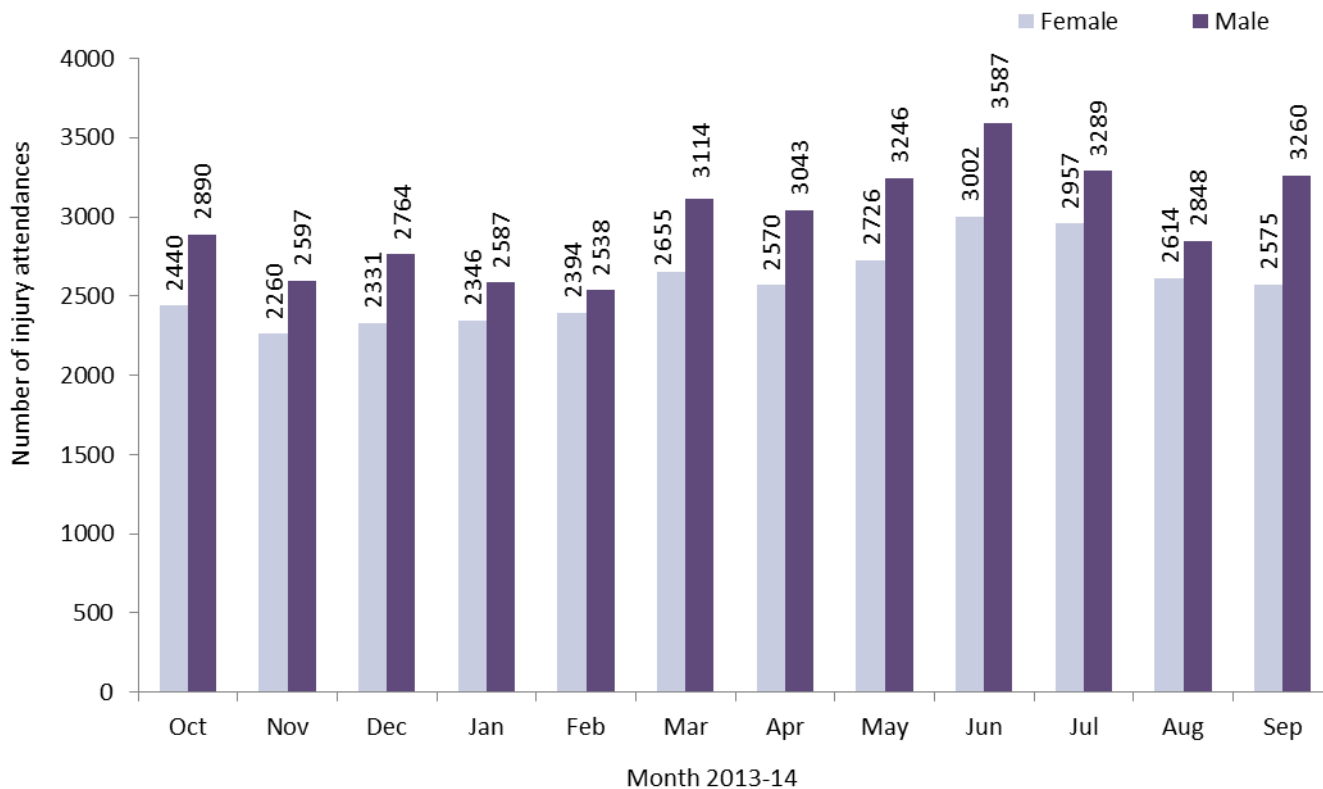
#### **Assault attendances**

Between October 2013 and September 2014 there were 1,919 assault-related injury attendances to Royal Blackburn Hospital ED.

Seven in ten (70%) assault attendees were male (males=1,344; **Figure 3**), with over half (54%) aged between 15 and 29 years (n=1,029) and just under two in five (39%) aged between 30 and 59 years (n=751; **Table 4**).

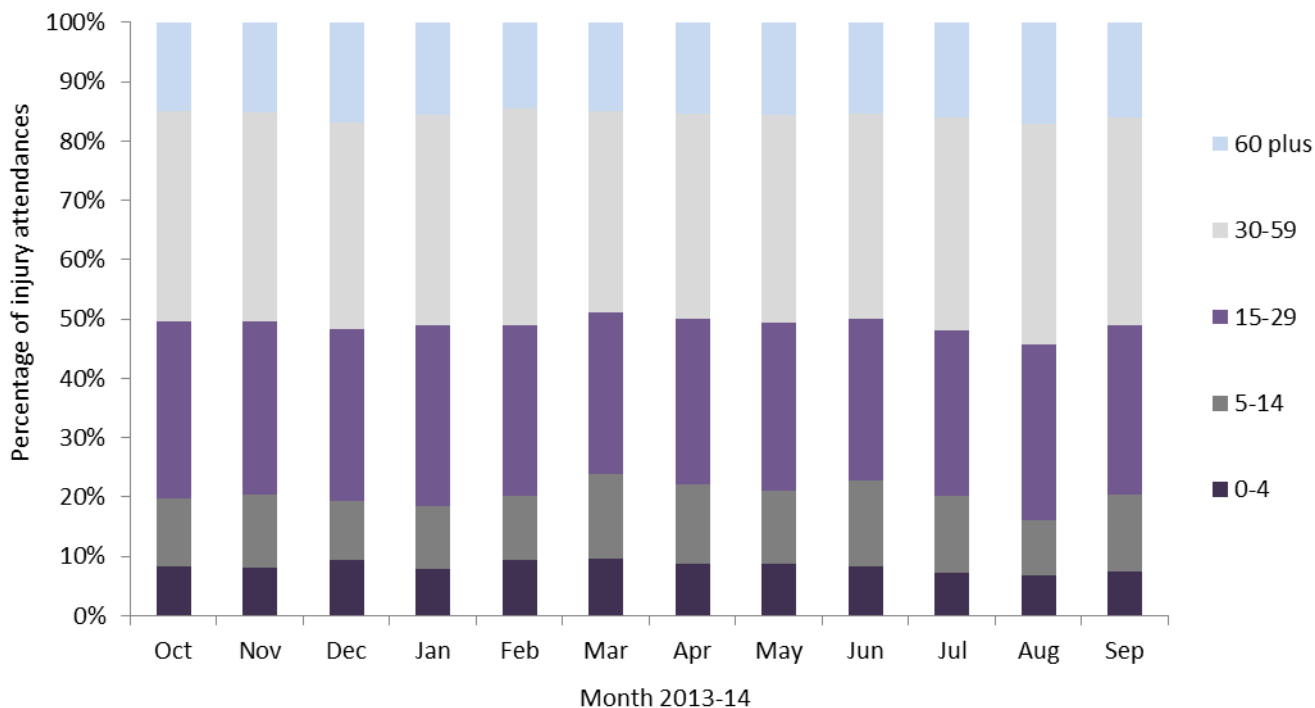
**Table 5** demonstrates the disposal method of assault attendances in 2013/14. Forty-four per cent were discharged from hospital with no follow-up treatment required (n=838) while 40% required follow-up treatment (n=769). Just under one in ten (8%) assault attendees were admitted to hospital (n=156).

**Figure 1: ED and UCC injury attendances by gender and month, October 2013 to September 2014<sup>^</sup>**



<sup>^</sup> There were 45 records where the gender was unknown and <5 records where the gender was recorded as indeterminate; these have been omitted from the chart.

**Figure 2: ED and UCC injury attendances by age group and month, October 2013 to September 2014**



**Table 1: ED and UCC injury attendances by injury group and month, October 2013 to September 2014<sup>§</sup>**

Injury group	Oct	Nov	Dec	Jan	Feb	Mar	Apr	May	Jun	Jul	Aug	Sep	Total	%
Other injury	4587	4112	4444	4317	4316	4928	4850	5254	5796	5437	4786	5033	57860	87%
Sports injury	243	263	202	224	218	336	346	305	346	321	242	346	3392	5%
Road traffic collision	296	320	236	250	239	311	243	249	280	300	250	274	3248	5%
Assault	184	144	195	168	134	179	147	144	146	160	159	159	1919	3%
Deliberate self-harm	20	18	19	20	25	15	27	21	21	28	25	24	263	0%
<b>Total</b>	<b>5330</b>	<b>4857</b>	<b>5096</b>	<b>4979</b>	<b>4932</b>	<b>5769</b>	<b>5613</b>	<b>5973</b>	<b>6589</b>	<b>6246</b>	<b>5462</b>	<b>5836</b>	<b>66682</b>	<b>100%</b>

<sup>§</sup> Due to low numbers, firework injuries have been included in the 'other' injury category (n=<5).

**Table 2: ED and UCC injury attendances by referral source and month, October 2013 to September 2014<sup>1</sup>**

Referral source	Oct	Nov	Dec	Jan	Feb	Mar	Apr	May	Jun	Jul	Aug	Sep	Total	%
Brought in by others	1789	1676	1658	1689	1576	1795	1817	2116	2015	2212	1973	1955	22271	33%
Self-referral	1438	1163	1291	1261	1463	1584	1577	1720	1914	1700	1560	1675	18346	28%
Brought in by parent	1035	973	965	964	983	1321	1244	1157	1453	1240	869	1189	13393	20%
Ambulance	852	840	934	793	692	862	775	769	936	894	858	826	10031	15%
Other	70	77	101	120	86	77	44	59	119	52	46	34	885	1%
GP request	41	31	44	41	38	42	35	28	43	32	45	30	450	1%
Police	35	29	54	38	25	23	35	42	35	46	34	39	435	1%
Sent by others	24	39	36	36	36	40	45	35	36	21	18	22	388	1%
ED staff	33	18	9	16	18	14	24	34	22	24	34	30	276	0%
Direct referral	9	<10	***	15	5	***	7	<15	10	20	16	20	124	0%
Staff health	***	***	***	6	<10	6	5	***	<10	***	***	***	52	0%
Emergency call	***	0	0	0	0	***	***	0	0	0	<10	<15	24	0%
Consultant	0	0	0	0	***	0	***	0	***	***	0	0	<10	0%
ED follow-up	0	0	0	0	0	***	0	0	0	0	0	0	***	0%
<b>Total</b>	<b>5330</b>	<b>4857</b>	<b>5096</b>	<b>4979</b>	<b>4932</b>	<b>5769</b>	<b>5613</b>	<b>5973</b>	<b>6589</b>	<b>6246</b>	<b>5462</b>	<b>5836</b>	<b>66682</b>	<b>100%</b>

<sup>1</sup> Please note that all numbers less than five have been suppressed (with \*\*\*) in line with patient confidentiality. If there is only one number less than five in a category then two numbers have been suppressed to prevent back calculations from totals.

**Table 3: ED and UCC injury attendances by discharge destination and month, October 2013 to September 2014<sup>2,3,4</sup>**

Discharge destination	Oct	Nov	Dec	Jan	Feb	Mar	Apr	May	Jun	Jul	Aug	Sep	Total	%
Discharged - no follow-up	2262	1829	1877	1817	1641	2045	2200	2213	2547	2464	2043	2106	25044	38%
Discharged to GP	778	729	679	752	703	949	859	906	944	787	768	910	9764	15%
BGH discharge to GP within unit BGH	418	403	462	423	611	665	669	717	739	603	617	657	6984	10%
Clinic - fracture/orthopaedic	478	468	376	422	451	487	482	493	562	597	441	526	5783	9%
RBH discharge to GP within unit RBH	185	337	443	514	502	363	377	481	481	416	458	363	4920	7%
Left before treatment	273	271	312	197	214	372	212	256	327	291	251	261	3237	5%
Clinic - other	262	246	250	239	205	283	217	251	254	301	276	278	3062	5%
Admitted to ward	215	225	235	209	220	183	220	218	337	330	213	270	2875	4%
Cross site transfer	0	0	126	163	128	146	130	118	113	123	122	185	1354	2%
GP treatment room	128	83	122	84	92	96	82	117	109	127	103	97	1240	2%
Left refusing treatment	70	66	62	55	71	56	45	70	48	75	58	50	726	1%
Other	5	11	44	20	30	34	25	47	34	42	37	45	374	1%
Unknown	155	118	<10	0	0	***	0	0	0	0	0	0	284	0%
Clinic - ophthalmology	22	13	21	26	23	29	34	14	26	11	25	25	269	0%
Other hospital	17	17	16	17	12	14	20	18	32	36	21	16	236	0%
Clinic - oral/dental surgery	22	9	16	12	9	27	20	21	16	11	9	18	190	0%
Trauma clinic	14	12	11	7	7	6	8	5	6	13	7	8	104	0%
Community/district nurse	9	<10	10	5	6	6	***	11	7	6	***	14	90	0%
ED dressing clinic	10	***	15	10	5	***	5	11	***	<10	7	<10	87	0%
Died in department	7	7	9	7	***	***	***	***	***	***	***	***	50	0%
Admitted to theatre	0	0	***	0	***	***	***	***	***	0	0	0	<10	0%
Referral other health care professional	0	0	0	0	0	***	0	***	0	0	0	0	***	0%
<b>Total</b>	<b>5330</b>	<b>4857</b>	<b>5096</b>	<b>4979</b>	<b>4932</b>	<b>5769</b>	<b>5613</b>	<b>5973</b>	<b>6589</b>	<b>6246</b>	<b>5462</b>	<b>5836</b>	<b>66682</b>	<b>100%</b>

<sup>2</sup> Please note that all numbers less than five have been suppressed (with \*\*\*) in line with patient confidentiality. If there is only one number less than five in a category then two numbers have been suppressed to prevent back calculations from totals.

Percentages may not add up to 100% due to rounding.

<sup>3</sup> In December 2013, there were slight changes to the dataset which resulted in variations in the discharge destination.

<sup>4</sup> BGH = Burnley General Hospital; RBH = Royal Blackburn Hospital. 'Clinic - other' includes: trauma clinic, dressing clinic, GUM clinic, medicine and diabetic clinic and dermatology/plastic surgery clinic. 'Other' includes: deflected at triage, left with advice at triage, referred to own dentist, police custody, residential home and other. 'Other hospital' includes: other hospital and emergency hospital transfer.

## ASSAULTS

Figure 3: ED and UCC assault attendances by gender and month, October 2013 to September 2014

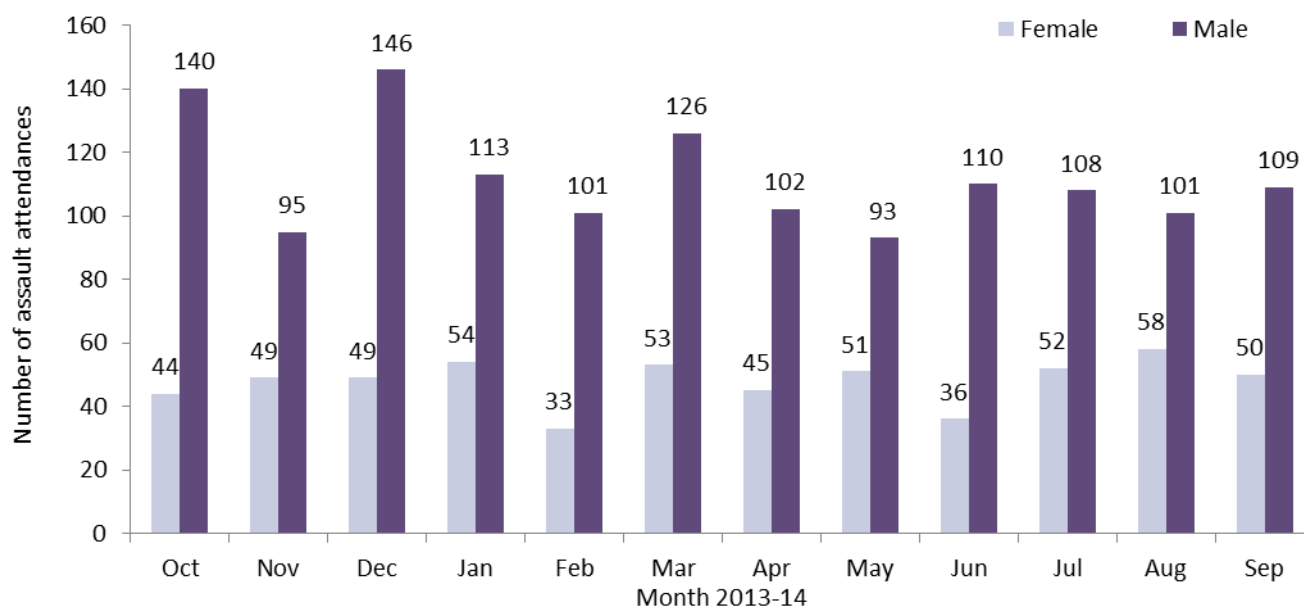


Table 4: ED and UCC assault attendances by age group and month, October 2013 to September 2014<sup>5</sup>

Age group	Oct	Nov	Dec	Jan	Feb	Mar	Apr	May	Jun	Jul	Aug	Sep	Total	%
5-14	***	***	<10	<10	<10	9	<10	<10	9	8	8	9	83	4%
15-29	104	87	105	102	80	86	75	80	68	89	78	75	1029	54%
30-59	72	51	78	59	46	73	63	55	63	57	66	68	751	39%
60 plus	***	***	***	***	***	11	***	***	6	6	7	7	56	3%
<b>Total</b>	<b>184</b>	<b>144</b>	<b>195</b>	<b>168</b>	<b>134</b>	<b>179</b>	<b>147</b>	<b>144</b>	<b>146</b>	<b>160</b>	<b>159</b>	<b>159</b>	<b>1919</b>	<b>100%</b>

Table 5: ED and UCC assault attendances by disposal method and month, October 2013 to September 2014<sup>5</sup>

Disposal method	Oct	Nov	Dec	Jan	Feb	Mar	Apr	May	Jun	Jul	Aug	Sep	Total	%
Discharged	92	70	83	73	48	70	60	62	57	70	83	70	838	44%
Follow-up	66	50	79	68	57	76	64	58	65	70	51	65	769	40%
Admitted	11	<10	19	14	12	14	<20	13	9	10	19	10	156	8%
Other	7	15	14	13	17	19	***	11	15	10	6	14	145	8%
Unknown	8	***	0	0	0	0	0	0	0	0	0	0	11	1%
<b>Total</b>	<b>184</b>	<b>144</b>	<b>195</b>	<b>168</b>	<b>134</b>	<b>179</b>	<b>147</b>	<b>144</b>	<b>146</b>	<b>160</b>	<b>159</b>	<b>159</b>	<b>1919</b>	<b>0%</b>

Published January 2015

Trauma and Injury Intelligence Group

Centre for Public Health, Faculty of Education, Health and Community, Liverpool John Moores University,

2nd Floor, Henry Cotton Building, Liverpool L3 2ET

T: 0151 231 4498 | E: [tiig@ljmu.ac.uk](mailto:tiig@ljmu.ac.uk) | W: [www.tiig.info](http://www.tiig.info) and [www.cph.org.uk](http://www.cph.org.uk) | Twitter: [www.twitter.com/tiig\\_cph](https://twitter.com/tiig_cph)

<sup>5</sup> Please note that all numbers less than five have been suppressed (with \*\*\*) in line with patient confidentiality. If there is only one number less than five in a category then two numbers have been suppressed to prevent back calculations from totals.

Percentages may not add up to 100% due to rounding.