



**ROYAL BLACKBURN HOSPITAL EMERGENCY DEPARTMENT AND URGENT CARE CENTRE  
AND BURNLEY GENERAL HOSPITAL URGENT CARE CENTRE**

**MONTHLY BULLETIN: APRIL 2013 TO MARCH 2014**

This bulletin provides a breakdown of all injury attendances to Royal Blackburn Hospital Emergency Department (ED) and Urgent Care Centre (UCC), and Burnley General Hospital UCC between April 2013 and March 2014.

In the twelve month period there were 64,236 ED and UCC presentations due to injury. The month with the highest number of attendances was July 2013 with 6,041 compared to 4,857 in November 2013 (**Figure 1**).

There were more males than females (males=34,573; 54%) (**Figure 1**), and over a third (35%) were aged between 30 and 59 years (n=22,248) followed by just under three in ten (29%) aged between 15 and 29 years (n=18,394) (**Figure 2**).

The injury group of ED and UCC attendances between April 2013 and March 2014 are detailed in **Table 1**. The majority (n=55,880; 87%) were recorded as 'other' injury. Sports injury (n=3,135) and road traffic collisions (n=2,931) each accounted for 5% of injuries, followed by 3% of injuries caused by assault (n=2,031).

**Table 2** shows the referral source to the ED and UCCs. A third (33%) of attendees were brought in by others (n=21,350), while over a quarter (26%) were self-referred (n=16,789) and over one in five (21%) were brought in by a parent (n=13,327).

The discharge destination for injury attendances in the twelve month period is displayed in **Table 3**. Over two-fifths (41%) were discharged from hospital with no follow-up treatment required (n=26,143) and 13% were discharged to their General Practitioner (GP) (n=8,506). Nine per cent of

attendees were referred to the fracture/orthopaedic clinic (n=6,001) and equally, 9% were discharged to a GP within Burnley General Hospital (n=5,466). Six per cent were discharged to a GP within Royal Blackburn Hospital (n=3,905) and 5% left the ED/UCC before treatment (n=3,493).

#### **ASSAULT ATTENDANCES**

Between April 2013 and March 2014 there were 2,031 assault attendances to the ED and UCCs. The month with the highest was July 2013 with 203 attendances (**Figure 3**).

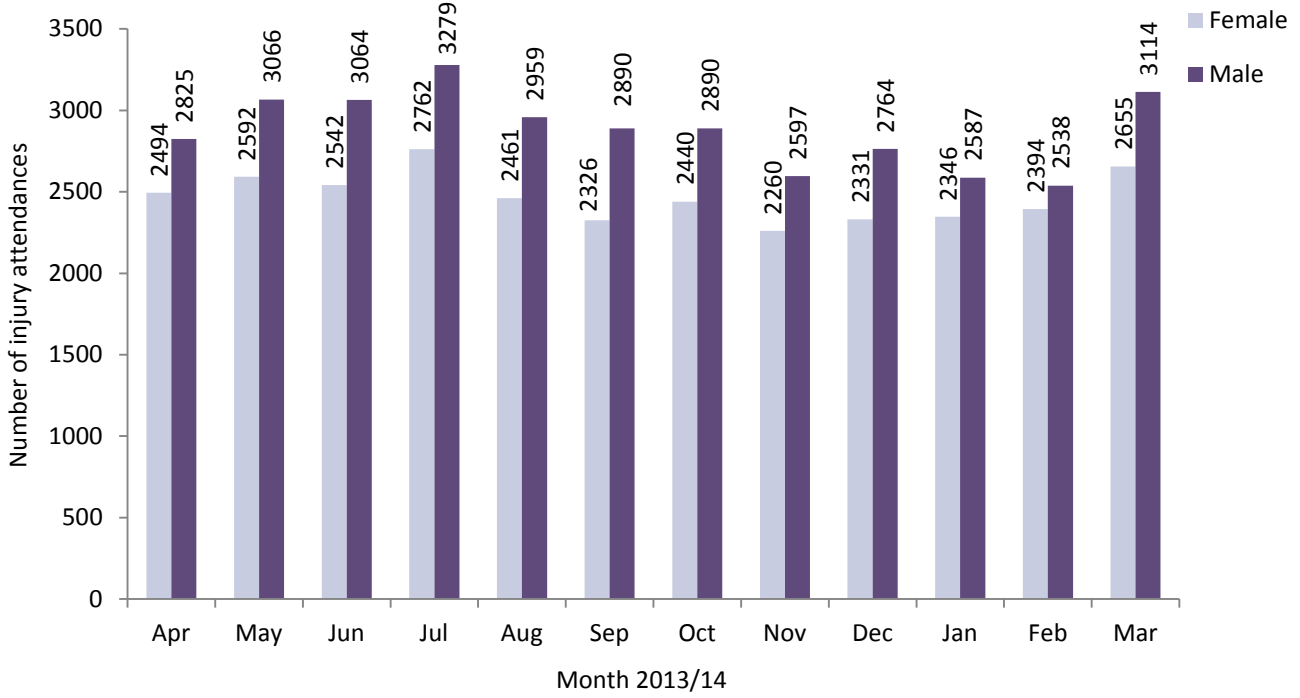
Over seven in ten (71%) assault attendees were male (males=1,449) (**Figure 3**), with over half (54%) aged between 15 and 29 years (n=1,091) and under two in five (38%) aged between 30 and 59 years (n=778) (**Table 4**).

The assault location is shown in **Table 5**. Between December 2013 and April 2014<sup>1</sup>, three in ten (30%) assaults occurred in a public place (n=205), followed by 12% in a pub/club/bar (n=84) and one in ten (10%) which occurred in the home (n=66).

**Table 6** demonstrates the disposal method of assault attendances in 2013/14. Forty-five per cent were discharged from hospital with no follow-up treatment required (n=909) while 35% required follow-up treatment (n=721). One in ten (10%) assault attendees were admitted to hospital (n=195).

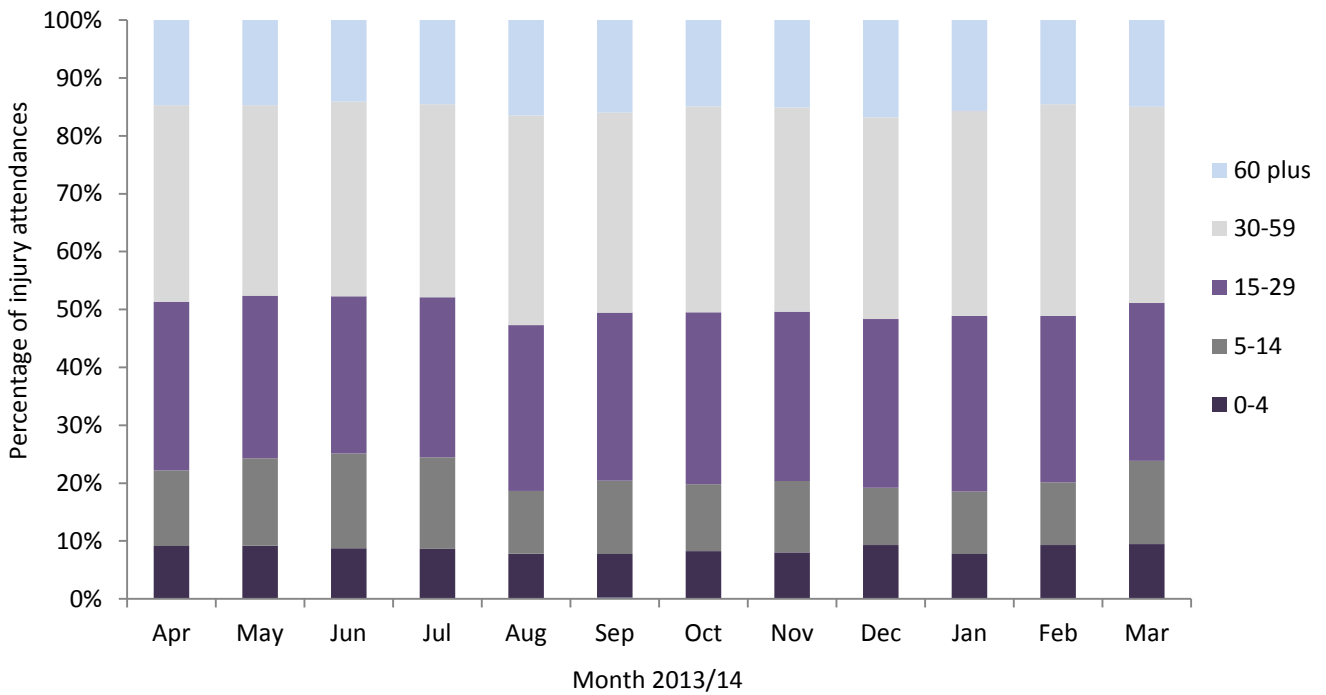
<sup>1</sup> East Lancashire Hospitals NHS Trust only started collecting the incident location (assault attendances only) in December 2013.

Figure 1: ED and UCC injury attendances by gender and month, April 2013 to March 2014<sup>^</sup>



<sup>^</sup> There were 55 records where the gender was unknown and five records where the gender was recorded as indeterminate; these have been omitted from the chart.

Figure 2: ED and UCC injury attendances by age group and month, April 2013 to March 2014<sup>†</sup>



<sup>†</sup> There were 16 records where the age was unknown; these have been omitted from the chart.

**Table 1: ED and UCC injury attendances by injury group and month, April 2013 to March 2014<sup>§</sup>**

Injury group	Apr	May	Jun	Jul	Aug	Sep	Oct	Nov	Dec	Jan	Feb	Mar	Total	%
Other injury	4651	4987	4913	5305	4801	4519	4587	4112	4444	4317	4316	4928	55880	87%
Sports injury	270	295	293	268	210	313	243	263	202	224	218	336	3135	5%
Road traffic collision	201	198	229	243	199	209	296	320	236	250	239	311	2931	5%
Assault	172	148	154	203	182	168	184	144	195	168	134	179	2031	3%
Deliberate self-harm	26	30	17	22	28	19	20	18	19	20	25	15	259	0%
<b>Total</b>	<b>5320</b>	<b>5658</b>	<b>5606</b>	<b>6041</b>	<b>5420</b>	<b>5228</b>	<b>5330</b>	<b>4857</b>	<b>5096</b>	<b>4979</b>	<b>4932</b>	<b>5769</b>	<b>64236</b>	<b>100%</b>

<sup>§</sup> Due to low numbers, firework injuries have been included in the 'other' injury category (n=<5).

**Table 2: ED and UCC injury attendances by referral source and month, April 2013 to March 2014<sup>2</sup>**

Referral source	Apr	May	Jun	Jul	Aug	Sep	Oct	Nov	Dec	Jan	Feb	Mar	Total	%
Brought in by others	1737	1839	1950	1936	2010	1695	1789	1676	1658	1689	1576	1795	21350	33%
Self-referral	1448	1444	1379	1528	1353	1437	1438	1163	1291	1261	1463	1584	16789	26%
Brought in by parent	1168	1298	1257	1384	936	1043	1035	973	965	964	983	1321	13327	21%
Ambulance	800	825	797	945	915	842	852	840	934	793	692	862	10097	16%
Other	59	113	100	118	84	68	70	77	101	120	86	77	1073	2%
GP request	22	44	30	32	26	34	41	31	44	41	38	42	425	1%
Police	25	34	34	37	42	45	35	29	54	38	25	23	421	1%
Sent by others	33	32	30	34	33	25	24	39	36	36	36	40	398	1%
ED staff	10	13	16	15	8	23	33	18	9	16	18	14	193	0%
Direct referral	11	9	8	<15	11	16	9	<10	***	15	5	***	107	0%
Staff health	<10	5	***	***	***	0	***	***	***	6	<10	6	44	0%
Emergency call	0	***	***	0	***	0	***	0	0	0	0	***	8	0%
ED follow-up	0	***	0	0	0	0	0	0	0	0	0	***	***	0%
Consultant	***	0	0	0	0	0	0	0	0	0	***	0	***	0%
<b>Total</b>	<b>5320</b>	<b>5658</b>	<b>5606</b>	<b>6041</b>	<b>5420</b>	<b>5228</b>	<b>5330</b>	<b>4857</b>	<b>5096</b>	<b>4979</b>	<b>4932</b>	<b>5769</b>	<b>64236</b>	<b>100%</b>

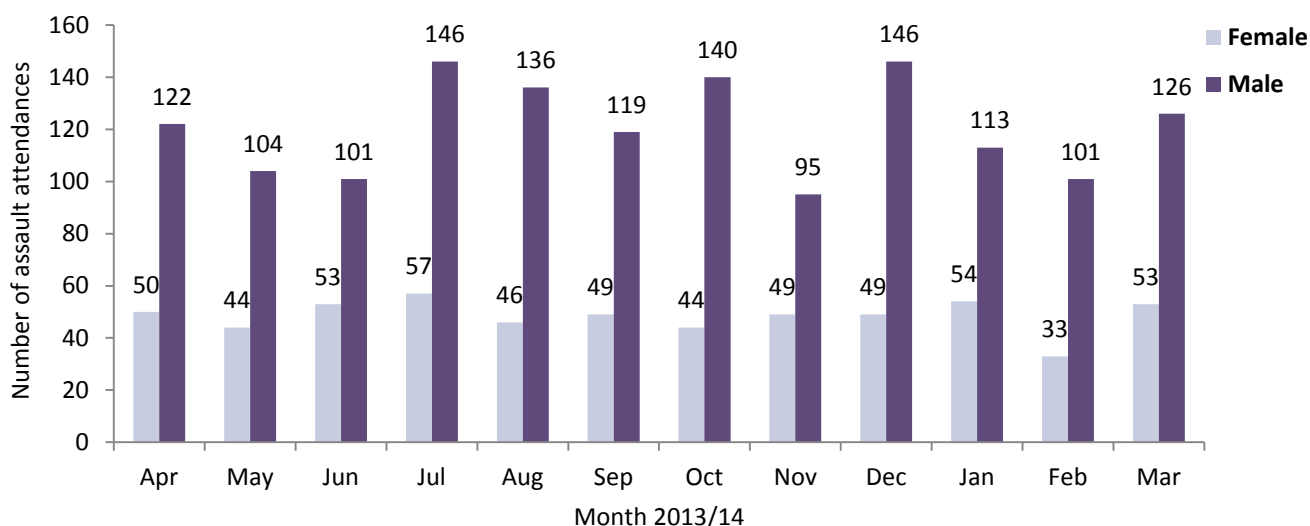
<sup>2</sup> Please note that all numbers less than five have been suppressed (with \*\*\*) in line with patient confidentiality. If there is only one number less than five in a category then two numbers have been suppressed to prevent back calculations from totals.

**Table 3: ED and UCC injury attendances by discharge destination and month, April 2013 to March 2014<sup>3,4,5</sup>**

Discharge destination	Apr	May	Jun	Jul	Aug	Sep	Oct	Nov	Dec	Jan	Feb	Mar	Total	%
Discharged - no follow-up	2289	2541	2658	2616	2354	2214	2262	1829	1877	1817	1641	2045	26143	41%
Discharged to GP	649	624	611	667	644	721	778	729	679	752	703	949	8506	13%
Clinic - fracture/orthopaedic	491	569	574	640	518	527	478	468	376	422	451	487	6001	9%
BGH discharge to GP within unit BGH	426	489	390	413	387	379	418	403	462	423	611	665	5466	9%
RBH discharge to GP within unit RBH	287	255	293	268	261	197	185	337	443	514	502	363	3905	6%
Left before treatment	313	290	257	415	352	227	273	271	312	197	214	372	3493	5%
Admitted to ward	240	271	262	289	241	256	215	225	235	209	220	183	2846	4%
Clinic - other	171	168	155	187	150	222	262	246	250	239	205	283	2538	4%
GP treatment room	122	116	103	150	168	111	128	83	122	84	92	96	1375	2%
Unknown	175	171	144	164	141	184	155	118	<10	0	0	***	1263	2%
Left refusing treatment	77	99	83	118	101	84	70	66	62	55	71	56	942	1%
Cross site transfer	0	0	0	0	0	0	0	0	126	163	128	146	563	1%
Clinic - ophthalmology	21	14	18	24	18	36	22	13	21	26	23	29	265	0%
Other hospital	26	30	26	26	29	22	17	17	16	17	12	14	252	0%
Other	8	***	5	17	<10	9	5	11	44	20	30	34	193	0%
Clinic - oral/dental surgery	10	8	9	18	15	13	22	9	16	12	9	27	168	0%
Trauma clinic	***	***	***	10	12	6	14	12	11	7	7	6	90	0%
Community/district nurse	5	***	9	***	8	8	9	9	10	5	6	6	80	0%
ED dressing clinic	5	***	5	9	5	6	10	***	15	10	5	***	79	0%
Died in department	***	***	***	6	6	6	7	<10	<10	7	***	***	60	0%
Admitted to theatre	0	***	0	***	***	0	0	0	***	0	***	***	<10	0%
Referral other health care professional	0	0	0	0	0	0	0	0	0	0	0	***	***	0%
<b>Total</b>	<b>5320</b>	<b>5658</b>	<b>5606</b>	<b>6041</b>	<b>5420</b>	<b>5228</b>	<b>5330</b>	<b>4857</b>	<b>5096</b>	<b>4979</b>	<b>4932</b>	<b>5769</b>	<b>64236</b>	<b>100%</b>

## ASSAULTS

**Figure 3: ED and UCC assault attendances by gender and month, April 2013 to March 2014**



<sup>3</sup> Please note that all numbers less than five have been suppressed (with \*\*\*) in line with patient confidentiality. If there is only one number less than five in a category then two numbers have been suppressed to prevent back calculations from totals.

<sup>4</sup> In December 2013, there were slight changes to the dataset which resulted in variations in the discharge destination.

<sup>5</sup> BGH = Burnley General Hospital; RBH = Royal Blackburn Hospital. 'Clinic - other' includes: trauma clinic, dressing clinic, GUM clinic, medicine and diabetic clinic and dermatology/plastic surgery clinic. 'Other' includes: deflected at triage, left with advice at triage, referred to own dentist, police custody, residential home and other. 'Other hospital' includes: other hospital and emergency hospital transfer.

**Table 4: ED and UCC assault attendances by age group and month, April 2013 to March 2014\*<sup>6</sup>**

Age group	Apr	May	Jun	Jul	Aug	Sep	Oct	Nov	Dec	Jan	Feb	Mar	Total	%
0-4	***	0	0	***	0	0	0	0	0	0	0	0	***	0%
5-14	13	<10	<15	18	7	9	***	***	<10	<10	<10	9	105	5%
15-29	82	89	85	92	105	74	104	87	105	102	80	86	1091	54%
30-59	72	49	52	83	63	80	72	51	78	59	46	73	778	38%
60 plus	***	***	***	<10	7	5	***	***	***	***	***	11	<55	3%
<b>Total</b>	172	148	154	203	182	168	184	144	195	168	134	179	2031	100%

\* There were <5 records where the age was unknown; these have been included in the monthly and total figures.

**Table 5: ED and UCC assault attendances by incident location and month, April 2013 to March 2014<sup>6,7</sup>**

Incident location	Apr	May	Jun	Jul	Aug	Sep	Oct	Nov	Dec	Jan	Feb	Mar	Total	%
Unknown	0	0	0	0	0	0	0	0	55	60	53	62	230	34%
Public place	0	0	0	0	0	0	0	0	68	51	38	48	205	30%
Pub/club/bar	0	0	0	0	0	0	0	0	31	17	13	23	84	12%
Other	0	0	0	0	0	0	0	0	20	20	14	16	70	10%
Home	0	0	0	0	0	0	0	0	<20	<20	<15	17	66	10%
Work	0	0	0	0	0	0	0	0	***	***	***	13	21	3%
<b>Total</b>	0	0	0	0	0	0	0	0	195	168	134	179	676	100%

**Table 6: ED and UCC assault attendances by disposal method and month, April 2013 to March 2014<sup>6</sup>**

Disposal method	Apr	May	Jun	Jul	Aug	Sep	Oct	Nov	Dec	Jan	Feb	Mar	Total	%
Discharged	76	75	65	94	82	81	92	70	83	73	48	70	909	45%
Follow-up	65	36	46	62	65	51	66	50	79	68	57	76	721	35%
Admitted	17	20	27	22	17	16	11	6	19	14	12	14	195	10%
Other	<15	9	<15	<25	12	<20	7	<20	14	13	17	19	170	8%
Unknown	***	8	***	***	6	***	8	***	0	0	0	0	36	2%
<b>Total</b>	172	148	154	203	182	168	184	144	195	168	134	179	2031	100%

Published May 2014

Karen A Critchley (née Swarbrick) – TIIG Researcher/Analyst

Centre for Public Health, Faculty of Education, Health and Community, Liverpool John Moores University,  
2nd Floor, Henry Cotton Building, Liverpool L3 2ET

T: 0151 231 4498 | E: [k.a.critchley@ljmu.ac.uk](mailto:k.a.critchley@ljmu.ac.uk) | W: [www.tiig.info](http://www.tiig.info) and [www.cph.org.uk](http://www.cph.org.uk) | Twitter: [www.twitter.com/tiig\\_cph](https://www.twitter.com/tiig_cph)

<sup>6</sup> Please note that all numbers less than five have been suppressed (with \*\*\*) in line with patient confidentiality. If there is only one number less than five in a category then two numbers have been suppressed to prevent back calculations from totals.

<sup>7</sup> East Lancashire Hospitals NHS Trust only started collecting the incident location (assault attendances only) in December 2013.