



## Aintree Accident and Emergency department Monthly bulletin: June 2005 to May 2006

This bulletin provides a breakdown of all attendances<sup>1</sup> at Aintree Accident and Emergency (A&E) department between June 2005 and May 2006.

Figure 1 illustrates the number of A&E attendances by month of attendance. October had the highest number of attendances at Aintree A&E department during this time period.

Figure 1: Total number of A&E attendances by month, June 2005 to May 2006

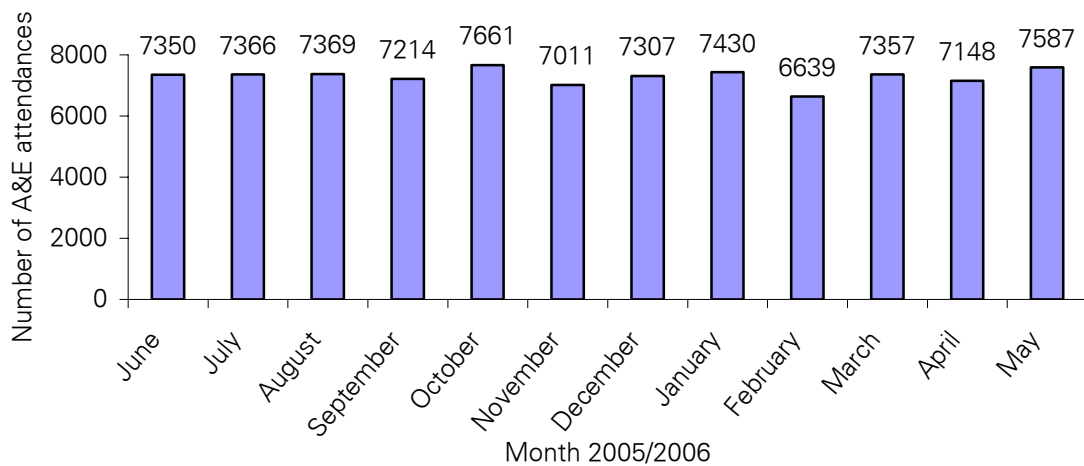
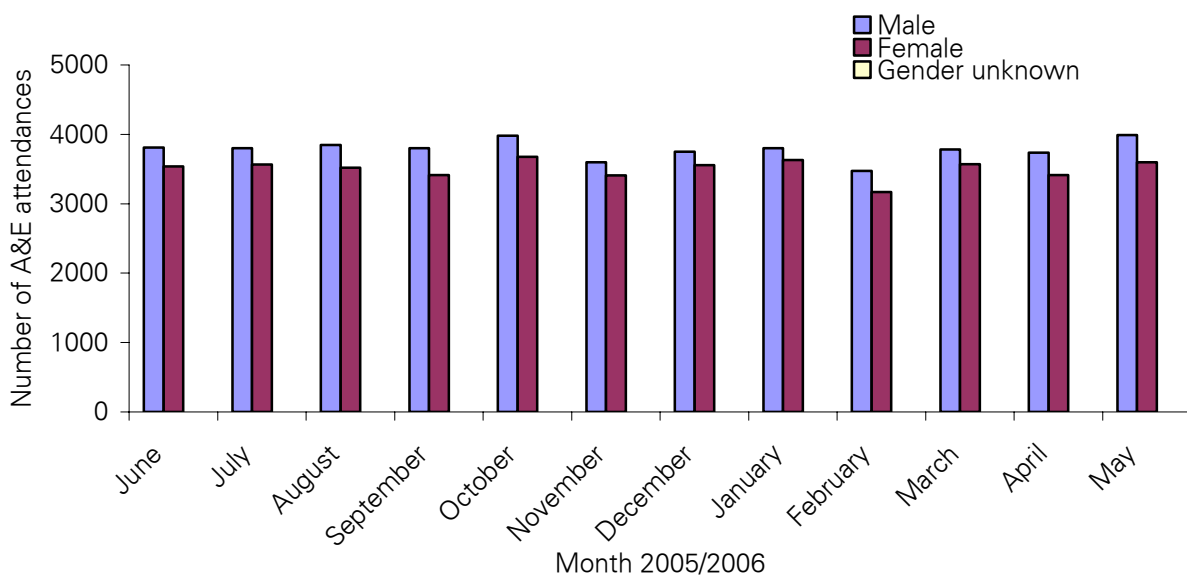


Figure 2 shows A&E attendances by gender. For all months there were more male than female attendances presenting at Aintree A&E department.

Figure 2: Gender of A&E attendances by month, June 2005 to May 2006



<sup>1</sup> For other A&E departments, TIIG reports on trauma incidents only. However, this report includes all attendances at Aintree Accident and Emergency. This is due to the high number of 'unknown' injury groups amongst attendances at Aintree A&E which makes it difficult to analyse trauma cases separately.

Figure 3 illustrates age group of A&E attendances for each month. The majority of A&E attendances were aged 15 plus. This is probably due to the close proximity of a local children's A&E department (Alder Hey).

**Figure 3: Age group of A&E attendances by month, June 2005 to May 2006**

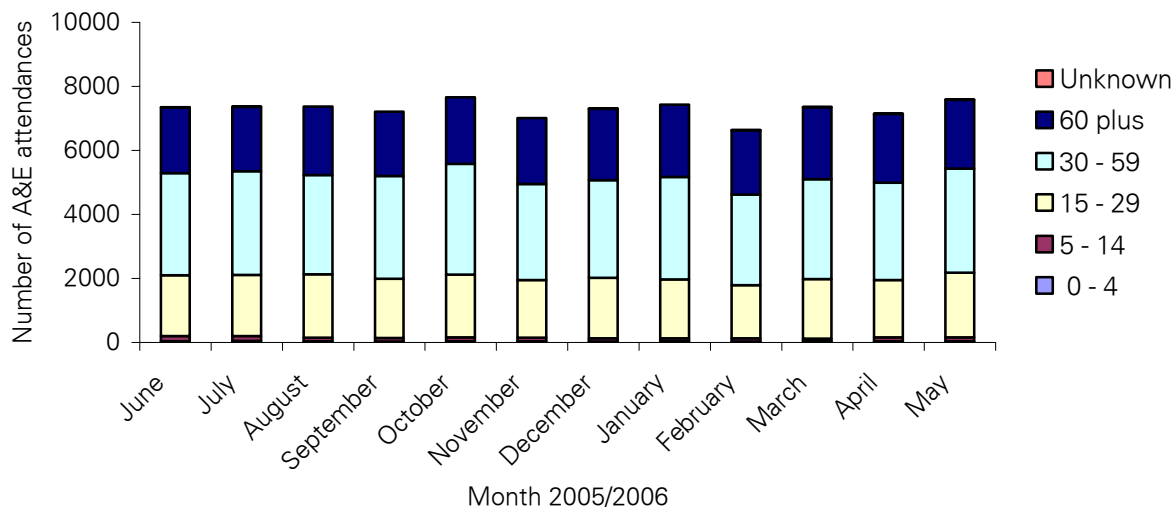


Table 1 details the injury group of A&E attendances. In almost eight out of ten (79%) attendances, injury group was recorded as other or unknown. This group will include A&E attendances that are not injury related, such as heart attacks. Of those injury groups recorded, falls accounted for 45% of attendances, road traffic accidents 18% and assaults 18%.

**Table 1: A&E attendances by injury group, June 2005 to May 2006**

Injury Group	Jun	Jul	Aug	Sep	Oct	Nov	Dec	Jan	Feb	Mar	Apr	May	Total	%
Other	5688	5700	5750	5659	5900	5324	5669	5768	5123	5642	5518	5704	67445	77
Fall	712	658	661	585	659	697	707	680	623	689	682	720	8073	9
Road Traffic Accident	238	279	245	261	337	327	300	240	241	287	247	273	3275	4
Assault	233	302	270	223	293	218	251	310	222	295	272	328	3217	4
Unknown	203	176	174	185	165	201	151	161	176	173	134	223	2122	2
Sport	137	116	125	170	187	128	93	148	138	139	170	197	1748	2
Self	136	135	144	129	119	107	133	122	113	132	123	140	1533	2
Dead	2	0	0	2	0	1	2	1	3	0	2	2	15	0
Firework	1	0	0	0	1	8	1	0	0	0	0	0	11	0
<b>Total</b>	<b>7350</b>	<b>7366</b>	<b>7369</b>	<b>7214</b>	<b>7661</b>	<b>7011</b>	<b>7307</b>	<b>7430</b>	<b>6639</b>	<b>7357</b>	<b>7148</b>	<b>7587</b>	<b>87439</b>	<b>100</b>

Table 2 illustrates the location where assaults occurred for patients presenting with assault-related injuries. The primary locations of assault were a public space (59%) and the home (20%).

**Table 2: Assault attendances by location of incident, June 2005 to May 2006**

Assault location	Jun	Jul	Aug	Sep	Oct	Nov	Dec	Jan	Feb	Mar	Apr	May	Total	%
Public Space	132	173	170	139	178	131	154	167	134	170	164	190	1902	59
Home	54	76	53	40	63	43	41	58	40	62	43	60	633	20
Other	34	41	38	37	43	30	44	70	37	48	56	64	542	17
Work	5	8	6	2	7	10	7	11	10	9	8	8	91	3
Walton Prison	6	3	1	5	1	1	3	3	1	4	1	3	32	1
School	1	0	0	0	1	3	1	1	0	2	0	3	12	0
Altcourse	0	1	2	0	0	0	1	0	0	0	0	0	4	0
In patient - Aintree	1	0	0	0	0	0	0	0	0	0	0	0	1	0
<b>Total</b>	<b>233</b>	<b>302</b>	<b>270</b>	<b>223</b>	<b>293</b>	<b>218</b>	<b>251</b>	<b>310</b>	<b>222</b>	<b>295</b>	<b>272</b>	<b>328</b>	<b>3217</b>	<b>100</b>

Table 3 shows the location where falls occurred for patients presenting with fall-related injuries. The primary location for falls overall was the home (54%), followed by a public space (32%).

**Table 3: Fall attendances by location of incident, June 2005 to May 2006**

Fall location	Jun	Jul	Aug	Sep	Oct	Nov	Dec	Jan	Feb	Mar	Apr	May	Total	%
Home	356	357	354	303	353	385	388	378	359	364	350	390	4337	54
Public Space	246	212	214	181	192	205	208	200	169	234	255	233	2549	32
Other	58	50	57	62	61	52	63	49	51	47	51	57	658	8
Work	42	34	35	33	45	44	42	40	34	38	22	33	442	5
School	7	3	0	4	8	9	4	12	9	4	4	5	69	1
Walton Prison	3	2	0	0	0	0	2	0	0	0	0	1	8	0
In patient - Aintree	0	0	0	1	0	2	0	1	1	1	0	1	7	0
Altcourse	0	0	1	1	0	0	0	0	0	1	0	0	3	0
Total	712	658	661	585	659	697	707	680	623	689	682	720	8073	100

Table 4 provides data on the disposal method of A&E attendances at Aintree hospital. Just under half (49%) of A&E attendees were discharged<sup>2</sup>.

**Table 4: Disposal method of trauma attendances, June 2005 to May 2006**

Discharge Method	Jun	Jul	Aug	Sep	Oct	Nov	Dec	Jan	Feb	Mar	April	May	Total	%
Discharged	1839	1893	1860	1938	2307	1996	1933	1903	1795	2005	1864	2076	23409	27
Other/unknown	2023	2002	1999	1946	2062	2086	2136	1302	766	905	944	929	19100	22
Discharged to care of GP	1516	1536	1460	1389	1393	1250	1317	1350	1038	1031	988	1192	15460	18
Admitted to hospital	695	704	758	738	698	643	708	1681	1915	2187	2034	1973	14734	17
Fracture clinic	342	370	307	323	304	276	319	282	286	333	309	354	3805	4
Discharged to return if condition gets worse	191	201	260	217	164	191	248	211	157	206	213	277	2536	3
A&E clinic	239	206	225	209	245	202	171	188	198	189	198	263	2533	3
Patient left department	155	128	168	158	182	88	166	185	172	202	241	194	2039	2
Discharged to other hospital	126	116	107	101	91	91	95	85	90	74	93	85	1154	1
Own discharge	40	48	59	49	51	45	45	61	66	51	62	63	640	1
Patient did not answer when called for treatment	44	28	54	42	59	41	43	49	42	69	76	70	617	1
Ear/Nose/Throat	53	41	34	30	39	31	36	50	41	40	43	33	471	1
Ophthalmology clinic	36	37	25	28	19	21	15	25	25	20	26	26	303	0
Died in Department	13	17	18	9	16	16	26	20	19	11	15	13	193	0
Maxillary Facial Unit	18	17	13	10	11	16	23	14	13	16	16	19	186	0
Sent to theatre	8	9	11	11	8	7	9	11	10	5	7	5	101	0
Discharged to dentist	9	5	7	8	8	6	8	6	4	7	5	4	77	0
Police custody	2	6	3	4	4	3	8	3	0	4	4	4	45	0
AED GP clinic	0	0	1	1	0	0	1	2	1	1	8	7	22	0
Brought in dead	1	1	0	3	0	1	0	1	1	1	2	0	11	0
Transfer to ward	0	1	0	0	0	1	0	1	0	0	0	0	3	0
Total	7350	7366	7369	7214	7661	7011	7307	7430	6639	7357	7148	7587	87439	100

Published August 2006

Zara Anderson

TIIG Analyst

Centre for Public Health, Faculty of Health and Applied Social Sciences, Liverpool John Moores University  
Castle House, North Street, Liverpool, L3 2AY

Tel: 0151 231 4505 Email: [z.a.anderson@ljmu.uk](mailto:z.a.anderson@ljmu.uk) Website: [www.nwpho.org.uk/ait](http://www.nwpho.org.uk/ait)

<sup>2</sup> Includes: Discharged, Discharged to care of GP, Discharged – to return if condition gets worse, Discharged to another hospital, Own discharge and Discharged to dentist